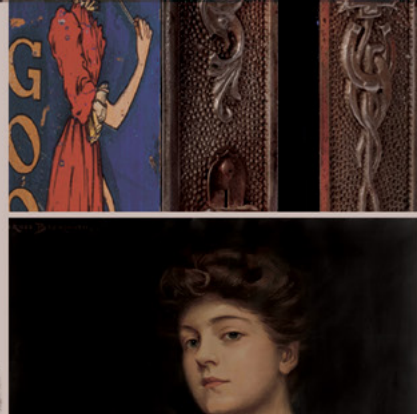
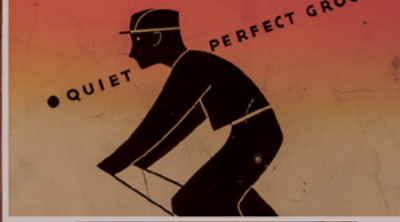
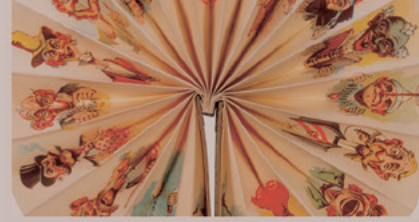




COIN-OP & ADVERTISING

SEPTEMBER 28, 2019



POTTER & POTTER AUCTIONS

WRIGHT'S



PUBLIC AUCTION #076

COIN-OP & ADVERTISING

AUCTION

September 28, 2019
10:00am CST

PREVIEW

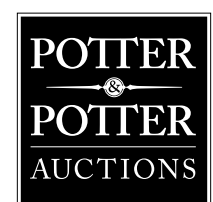
September 26 - 27
10:00am - 5:00pm
or by appointment

INQUIRIES

info@potterauctions.com
phone: 773-472-1442

CONTENTS

Coin-Op & Vending	2
Advertising	51
Black Americana	82
Toys & Novelties	109



POTTER & POTTER AUCTIONS, INC.
3759 N. RAVENSWOOD AVE. SUITE 121
CHICAGO, IL 60613



COIN-OP & VENDING



1



2



3



4

1. O.D. Jennings / Rock-Ola Five Cent Slot Machine with Mint Vendor. Chicago, ca. 1920s. Having a Rock-Ola front, oak cabinet, and side mint vendor. Working condition. 24 ½ x 17 x 14". Restored. Includes locks and keys.

1,000/1,500

2. O.D. Jennings 10 Cent Victory Chief Slot Machine. 1940s. Unrestored, working condition. 27 ½ x 15 x 15". Lock removed from original rear door.

900/1,300

3. Mills Novelty Extraordinaire One Cent Slot Machine. Circa 1930s. Art Deco-inspired design. Wooden cabinet with cast iron front including a heraldic eagle plate. Working. No rear door. 30 x 15 x 20". Veneer chipped at sides, otherwise good.

700/1,200

4. Mills Novelty Five Cent Gooseneck Slot Machine. Chicago, ca. 1920s. Cast metal front with owl, Liberty Bells, and filigreed designs. New plate added over middle portion of front casting, replaced award cards. Height 25". Working. Original rear door, lock and key.

900/1,300



5



6



11



9



7



8



12



10

5. **Rock-Ola / Mills Five Cent War Eagle Slot Machine.** Chicago, ca. 1930s. The scarce Rock-Ola version, oak cabinet, original front casting cleaned, polished, and repainted. 27 x 16 x 14 1/2". Lock and key. Professionally restored to fine, working condition, including jackpot and reserve jackpot; with a typed summary of the restoration, which was completed in 2017. Slight cracking to back side of bonnet, but stable.

1,500/2,500

6. **Mills High Top Five Cent Slot Machine.** Chicago, ca. 1940s. Metal and wooden blue-bodied slot machine. 26 x 15 x 15". Working. Lock and key.

600/900

7. **Mills Novelty Five Cent QT Dial Slot Machine.** Chicago, ca. 1935. Oak cabinet with original mechanism, original front casting has been cleaned, polished and repainted, replaced reel strips, award card, and dial/map of the Northern Hemisphere. 18 x 13 x 12 1/2". Original front Mills lock, no keys. Not working. Rare.

1,500/2,500

8. **Mills Five Cent Jockey Poker Hand Trade Stimulator / Slot Machine.** Chicago, ca. 1900. Five-reel trade stimulator, in oak cabinet with fancy cast metal marquee, round glass front covering five reels of playing cards. Wooden decorations applied to front and sides. Three coin slots. Win between one and 25 cigars depending on the poker hand shown. 20 x 16 x 12". Some parts restored. Lock and key.

4,000/5,000

9. **Mills Pirate on Rum Barrel 25 Cent Figural Slot Machine.** The pirate's torso signed "R.S. DeLong & Son/95," barrel lettered "Rum/XXX". Arm with flintlock pistol acts as the machine lever. Height 72".

3,000/4,500

10. **Mills One Armed Bandit 5 Cent Figural Slot Machine.** Bandit's left arm, holding a revolver, acts as the machine lever. Height 70". Carved by Royal Bell in the Frank Polk style.

3,000/4,500

11. **Rex Novelty Poker Reel Fortune-Teller / Trade Stimulator.** Chicago, ca. 1900s. Countertop fortune-teller which could have also been used as a trade stimulator, in original wooden cabinet retaining maker's decals to sides, glass opening displays five reels which form a poker hand. Working mechanism. Cast iron marquee with original fortune-telling slip. 11 1/2 x 10 x 9 1/2". Lock, no key. Scattered nicks to cabinet. One screw lacking to affix marquee.

700/900

12. **Mills / Golden Nugget 25 Cent Slot Machine.** Older (1980s) restoration by Squires & Corey. 26 x 16 x 15". Lock and key.

800/1,200



13



15



17



14

13. Caille Superior Operators Bell 25 Cent Nude Front Slot Machine with Skill Stop. Circa 1928. Three-reel slot machine with ornate front casting, this uncommon version incorporating a nude figure. 22 x 12 x 14". Lock and keys. Replaced reward and info cards, front re-plated. Original rear door and mechanism.

2,000/3,000

14. Five Cent "Shake Hands with Uncle Sam" Grip Tester. Oak cabinet with front metal castings, atop sits a bust of Uncle Sam with hand extended. Insert a nickel and squeeze his hand to test your strength. Hand-lettered oak marquee. Height 75". Old grip dial by Holly Mfg., other parts replaced or produced in the style of Caille.

2,000/3,000

15. French Table Kipé Coin-Operated Wheel Game. Circa 1930s. A four-in-one metal and hard plastic gaming wheel. Flicking the lever causes the wheel to spin and stop on one of six countries: United States, Italy, Spain, France, England, or Belgium. The dial also displays a color, animal, and dice value. On a three-column cast iron stand of later manufacture. Set to free play. Scarce.

600/900



16. Field Mfg. One Cent Sunny Boy Countertop Gumball and Slot Machine. American, 1920s. Cast aluminum case and playing field painted in colors. A penny buys a gumball and an attempt to flip the penny into Sunny Boy's mouth. If successful, customer turns the handle and collects the jackpot. Replacement marquee and paper sign. Height 14" (exclusive of marquee). Rare.

5,000/7,000

17. Pace Mfg. "Pace's Races" 5 Cent Console Slot Machine. 1930s. Floor model slot machine. Paneled wooden cabinet with metal castings of a racehorse to both sides. Under the glass top is a track with seven cast iron horses, with grandstands separated by a white fence. Drop a nickel into one of the corresponding slots to bet on a horse. Pull the start lever and the horses gallop toward the finish line, and the winning horse's number placard pops up. The odds for each horse are shown at the end of the track; odds rotate with each running. 36 x 44 x 19 1/2". Working condition. Locks and keys.

6,000/9,000



16



19
(both sides)



18

18. **Eureka Coin Drop Automatic Payout Slot Machine.** [Baltimore], ca. 1889/early 1890s. Oak cabinet with rounded top, the front with two columns flanking the central glass panel through which five rows of jackpot tokens are visible. 18 x 12 x 19 1/2". Top cracked, small nicks to edges. Lock and key. Working condition. Rare.

2,000/3,000

Attributed to George W. Price of the Eureka Box Co., of Baltimore, this machine bears close similarities with Price's 1889 patent design for a "coin box," which coin-op historian Dick Bueschel called "the first slot machine" (*Coin Drop International*, Sept./Oct. 1996, pg. 22). This cabinet is of the same form as Price's original design, however the front window on this model is larger, allowing more coins to be shown, a modification probably intended to attract more attention from prospective players. And instead of employing two "channels" for the player's coin to take when dropped inside, this improved mechanism incorporates five, so that a customer might win one or all the coins from the five rows. Coins placed in the machine could be actual currency or, as presently shown, trade tokens to the establishment where the machine was used.

19. **Goo Goo Gum One Cent Vendor.** American, ca. 1910s. Blue wooden cabinet with "Goo Goo Gum" in gilt lettering on both sides and cartoonish figures of a roller skating boy and a girl with straw held to her mouth. Cast iron front lettered "one cent" and featuring floral and horseshoe-designed scrolls, central window. 16 1/2 x 8 x 7 1/2". Original, unrestored cabinet and front, working mechanism; retains bracket, with older coat of paint. Nicks and divots to cabinet not affecting overall appearance or stability, hairline crack to iron front at lower right. A rare and desirable machine.

10,000/15,000



20

20. **Mills Novelty One Cent "Little Perfection" Vending Machine.** Chicago, ca. 1910s. Fancy cast iron base, rim, and lid, the front plate embossed with the Mills name and owl logo, and featuring what the company advertised as a "dust-proof chute." Evenly oxidized; a rare and attractive original machine. Locks and keys included.

8,000/12,000

21. **Hance "Fat Boy" Coin-Operated Peanut Vending Machine.** Red cast iron base with gilt detailing, flared glass globe, pull mechanism dispenses product. Working. Height 19". With keys. Restored.

3,800/5,000

22. **Roth & Langley Mo-Jo Chewing One Cent Gum Vendor.** Brooklyn, NY, ca. 1915. Original tiger copper base with red and gilt stenciled lettering. Hook finger through the loop and push plunger to dispense gum. Replaced decal. 10 x 7 x 7". Rare.

3,500/5,000



21



22



23



25



26



27



29



24

23. **Wilbur's Sweet Chocolate / Pepsin Gum One Cent "L" Vending Machine.** Champion, ca. 1900s. Four column vending machine, original wooden cabinet with mirror front, porcelain/enameled sides, would dispense three flavors of gum and Wilbur's Chocolate. 32 x 9 ½ x 9". Includes lock and key. Three old screws lacking, porcelain with scattered chipping at edges, otherwise good. Rare.

2,500/3,500

24. **Case Chicle Co. One Cent Pepsin Gum Two-Column Vendor.** Circa 1900s. Two-column vending machine, nickel-plated base and lid with glass dome, vending mechanism with replacement Case Pepsin Gum panels to sides. 14 ½ x 8 x 8". Restored. Rare.

2,500/3,500

25. **Dentyne / Pepsin Gum One Cent "L" Vending Machine.** Champion, ca. 1900s. Four column vending machine, wooden cabinet with porcelain panels to sides and front. 32 x 9 ½ x 9". Includes lock and key. One front glass panel cracked, chipping to edges of porcelain, otherwise good. Rare.

2,000/2,500

26. **Hoff Vending Co. Wrigley's Gum One Cent Dispenser.** New York, ca. 1920s. Eight-column rotating vending machine with cast aluminum base and cover. Insert a penny and turn the knob to dispense a pack of gum. Machine instructions printed on a plate on top of vending mechanism. Height 14 ½". Exterior repainted. Mechanism jammed, may require repair. Lock and key.

1,000/1,500

27. **Kayem Products Wrigley's Gum Five Cent Dispenser.** Los Angeles, ca. 1940s. Wall-mount machine vends packets from two slots, porcelain case depicts a woman in hat enjoying a stick of gum. 13 x 8 x 4". Restored.

500/700

28. **Li'l Abner 10 Cent Coin-Operated Vending Machine.** Features graphics on three sides, revolving selector of Li'l Abner Goobers, Daisy Mae Raisins, Mammy Yokum Chaws, and Pappy Yokum Delight. On a cast iron stand. Revolving mechanism working. Lock and key. Vendor 23 x 12 x 12".

800/1,200

29. **Blue Bird One Cent Penny Drop Gumball Vendor.** Kansas City, ca. 1920s. Made for Peerless Products Co. Aluminum base and pressed steel lid. Drop in a penny, hit the return and win back your penny as well as a gumball. Height 20 ½". Restored cabinet. Lock and key.

900/1,300



28



30

31

32

30. **Blue Bird Once Cent Gumball Vendor.** Circa 1920s. Cast aluminum, original finish. Serial number 06803 stamped to base. 11 1/2 x 6 x 6". No key.

300/500

31. **Blue Bird Magic Vendor One Cent Gumball Machine / Trade Stimulator.** Circa 1935. Insert a penny and the machine both dispenses a gumball and the center wheel spins. If the wheel spins to the word "Magic" the customer would win a prize. Height 18". Chute cover by Peerless Products (Kansas City). Working. Lock, no key. Reproduction wheel dial.

2,000/3,000

32. **Blue Bird One Cent Gumball Vendor.** Kansas City: Universal Products, ca. 1930s. Aluminum base and glass cylinder, globe having a "Super-Mint Gum" decal. Key missing. Height 14". Very good.

300/400

33. **Penny King / EHL One Cent "Four-in-One" Countertop Candy and Gumball Vendor.** 1930s. Octagonal glass globe, with four separate chambers, on a rotating base. Height 17 1/2". Scattered pitting to original nickel plating; three (of four) original decals retained.

800/1,200

34. **Penny King / EHL One Cent "Four-in-One" Countertop Candy and Gumball Vendor.** 1930s. Octagonal glass globe, with four separate chambers, on a rotating base. Height 18 1/2". Base, lid, and interior painted red. Lock and key.

800/1,200



35

36

37

38

35. **Penny King System One Cent Gumball Vendor.** Detroit: Earl H. Lohmuller, ca. 1930s. Aluminum base and a glass cylinder globe with original decal advertising "American Maid Bub-L Gum." Penny King manufactured this for the American Chewing Products in Newark, N.J. Height 9 1/2". No key. Old paint residue to back of base; some on bottom of globe. Good.

100/200

36. **Penny King System One Cent Gumball Vendor.** Detroit: Earl H. Lohmuller, ca. 1930s. Aluminum base with gumball catcher and a glass cylinder globe with an original decal advertising chewing gum for the U.G. Grandbois company in Kalamazoo, MI which this machine was manufactured for. Height 11". No key. Decal graphics faded, "property of" tag on interior of cylinder along with old gumballs, body slightly loose.

100/200

37. **Penny King System One Cent Gumball Vendor.** Detroit: Earl H. Lohmuller, ca. 1930s. Aluminum base with gumball catcher and a cylinder globe, unmarked. Height 11". No key. Light oxidation to base; good.

100/200

38. **Simmons Model A One Cent Peanut Vendor Machine.** Chicago, ca. 1930s. Red porcelain cast iron base and lid, eight-sided glass globe. Lever and knob dispenses gumball. Retains an old Illinois Vending License label to back side of base. 16 x 7 x 7". Lock removed from underside and replaced with screw, otherwise appears all original. Light chipping to enamel at edges. Old padlock and key for lid. Working condition.

300/500



39

39. **Pack It Company One Cent Gumball Vendor.** Detroit, ca. 1930s. Art Deco-style machine, cast aluminum base with faux granite finish, knob turns to dispense a gumball. Original mechanism and bottom cover. Lock and key included. Slot at side holds wax wrappers. Original paint on body, top half restored. 17 x 8 x 8". Scarce.

600/900



40



42



43



44



45



40. **Game of Skill One Cent Gumball Vendor and Trade Stimulator.** American, ca. 1910s. Oak cabinet with metal parts and glass front. Insert a penny at the top right and machine dispenses gumball which player attempts to flick toward bull's-eye with spring-action button. Land in the right spot and win 2, 5, or 10 cents in trade, otherwise gumball vends. 18 ½ x 14 x 6 ½". Portion of old patent decal retained. Lock and key.

800/1,200



41

41. **Ad-Lee Novelty Co. E-Z Five Cent Gumball Machine.** Chicago, ca. 1910s (patent date stamped to rim of tray). Cast iron base and lid retains mostly original paint, some older retouching. Machine would dispense gumballs containing a slip of paper through the middle. Match the number to award card and win a prize. Serial number V1058 stamped to coin slot. Decal appears original, new award card. With key and padlocks, quantity of old gumballs inside. With old padlocks and key. Height 23".

800/1,200

42. **Ad-Lee Novelty Co. E-Z Five Cent Gumball Machine.** Chicago, ca. 1930s (patent date stamped to rim of tray). Cast iron base and lid, repainted. Machine would dispense gumballs containing a slip of paper through the middle. Match the number to the one listed on award card and win a prize. Original decal. Mechanism finicky, may require adjustment. Includes one period padlock, no key. No award card or marquee. Height 16". This is the version with no front plate and a large side door.

800/1,200



46



47



48

43. **Advance Machine Co. One Cent Hot Peanuts Vendor.** 1920s (pat. dates, 1912, 1923). Electric hot nut vendor, red cast iron base, light up top. Height 20 ½". Includes lock and keys. Professionally restored to working condition, with modern power cord.

600/900

44. **Advance Machine Co. One Cent Gumball Vendor.** 1920s (pat. dates 1912, 1917, 1928). Original paint, globe, and decals. Height 13". Two period locks.

250/350

45. **Advance Machine Co. One Cent Gumball Vendor.** 1920s (pat. dates 1912, 1917, 1923). Cast iron blue base and lid, glass globe, no decals. Height 14 ½". Locks, no keys. One rubber foot perished.

200/300

46. **Bloyd Mfg. One Cent Lucky Boy Gumball Vendor.** Maroon body and lid, "Fresh" decal. Height 14 ½". Restored.

250/500

47. **Coast Vendors Inc. One Cent Vending Machine Baseball Game.** 1950s. With original Quebec Vending distributor labels to the sides. Dispenses a gumball while incorporating a flip-game to score a hit or home run. Height 15 ½". Plastic globe version.

300/500

48. **Columbus Model A One Cent Gumball Vendor.** Columbus, OH, ca. 1910s. Original unrestored base and lid, period barrel locks and cast iron wall mount; remnants of original decal to base. Model M globe with newer decals. Height 15". With key.

350/500



49



50



51



52



54



56



57



58



53

49. **Columbus Model A One Cent Gumball Vendor.** Columbus, OH, ca. 1910s. Cast iron red base, glass globe with embossed Columbus star logo. Height 15". With period padlocks and key. **250/400**

50. **Hawkeye One Cent Red Dot Nuts Vending Machine.** Red base and lid, decal for Red Dot salted nuts. Height 14 1/2". Lock and key. **250/400**

51. **Ford Gum & Machine Co. One Cent Gumball Vendor.** Lockport, NY, ca. 1930s. Original red paint, manufacturer's plaque and serial number (106194) on coin slot, original decal. Aluminum marquee with American Legion label. 14 1/2 x 7 x 7". Working. No key. **150/250**

52. **National Mfg. Magna Vendor Gumball Machine.** 1930s. Polished aluminum eight-sided base, stamped serial number 6876 below dispenser. Sixteen-sided globe, replacement decal. Height 14 1/2". Underside would be locked with padlock, not included. **350/500**

53. **Norris Mfg. One Cent / Five Cent 'The Master' Fantail Gumball Vendor.** Columbus, ca. 1920s. Cast aluminum front, green porcelain base. Penny for one turn, nickel for five. 16 x 8 x 8". Locks and keys. **1,100/1,500**

54. **Norris Mfg. Co. One Cent 'The Master' Gumball Vendor.** Columbus, ca. 1923. Tan and green enamel. Original lock and keys. 16 x 8 x 8". Working. **250/350**

55. **Pulver Chewing Gum One Cent 'Yellow Kid' Vending Machine.** Rochester, ca. 1930s. Red enameled porcelain panels, metal case, wooden backing. Clockwork mechanism dispenses gum and Too Choos, with separate coin slots. Working. 24 x 9 1/2 x 6". Restored. **1,200/1,600**

56. **Pulver Chewing Gum One Cent Short Case 'Yellow Kid' Vending Machine.** Rochester, ca. 1930s. Red enameled case with white lettering. Clockwork mechanism dispenses Too Choos or gum as the figure moves inside. In working condition, the original case with scattered retouching. Original mechanism, figure showing paint loss. Includes lock and keys. Height 20 1/2". **600/900**

57. **Pulver Chewing Gum One Cent Woody Woodpecker Vending Machine.** Plastic figure of Woody Woodpecker standing beside the dispenser. Restored original case and door, correct red wrinkle finish, original mechanism. Height 20 1/2". **700/1,000**

58. **Pulver Chewing Gum One Cent Vending Machine Case.** Red and white porcelain enameled short case. 20 x 8 1/2 x 4". Retains lock mechanism, no key. Scattered repainting. **150/300**



55



59



60



62



63



64



61

59. General Merchandise Co. Smilin' Sam from Alabam' One Cent Vending Machine. Original figural cast aluminum peanut vendor. Drop in a penny and pull out the man's tongue to dispense product. Raised lettering to base. Serial number 506A. Paint to eyes and mouth appears mostly or all original, head and lettering with re-touching. 13 ½ x 11 x 10". Lock and key. Formerly in the collection of the late Bill Enes.

2,500/4,000

60. Little Nut Vendor "Nut House" One Cent Vendor. Lansing, MI, ca. 1930s. Cast iron and aluminum with glass windows. Insert a penny to dispense a scoop of nuts and pull on the handle to release. 7 ½ x 7 x 5". Embossed lettering on roof and base. With barrel keys and locks. Repainted. Working. A scarce machine.

1,000/1,500

61. M.C. Prine / Northwestern One Cent Peanut Vendor. Baraboo, WI, ca. 1930s. Cast iron base, dispenser cover embossed by Prine. Working mechanism. Height 15 ½. Lock and keys. Repainted, newer lock.

200/400



65



66



67

62. Victor Vending Co. Five Cent Gum / Peanut Machine. Wood, plastic, and aluminum countertop machine. Lock, no key. 12 x 7 ½ x 6". Nicks and scratches.

100/150

63. Victor Vending Co. One Cent Topper Machine. Black and red body vending machine. Height 16". Lock and key.

150/250

64. Specialty Mfg. Ideal One Cent Cold Peanut Vendor. Circa 1930. Insert a penny to dispense a quantity of cold peanuts, with embossed Dietz globe. Height 16". No padlock for cover, includes lock and key to base. Uncommon.

900/1,200

65. The Challenger Deluxe Coin-Operated Hot Nut Vendor. Chicago: Tropical Trading Co., ca. 1950s. Electric hot nut vendor with light-up marquee, cup dispenser at side, original plaques and decals, accepts five or ten cents. 22 x 18 x 6". Locks and keys. Electric component working.

900/1,100

66. Large Coin-Operated Hot Nut Vendor. Cast iron base, glass retains some older hand-lettering. 26 x 13 x 13".

400/600

67. Copper Hot Peanuts Roaster Machine. American (most probably manufactured by W.B. Berry), ca. 1890s. Electric roasting machine with enclosed glass display, hinged lids, embossed lettering on three sides. 36 x 19 x 12".

400/600



68



69



70



73



74



71



72



75



76

68. **Advance Mfg. Hot French Fried Popcorn Machine.** St. Louis. Retains original popping mechanism, not tested. Height 53 ½". All signs are porcelain.

300/500

69. **Popcorn 10 Cent Painted Vending Machine Cabinet.** Vintage painted wooden vending machine cabinet, on casters, with hand-lettering to sides, incorporating a napkin dispenser. 37 x 20 x 18". Consignor used as a slot machine stand.

100/200

70. **Fisher's "Salted in the Shell" Peanut Roaster Machine.** Wooden cabinet with glass sides, hinged lid, paper Fisher's advertisements on base (heavily toned). 37 x 16 x 15 ½". Consignor used as a slot machine stand.

300/500

71. **F.E. Machen Mfg. One Cent Radio Vender Wall Mount Hot Nut Machine.** Cedar Rapids, IA, ca. 1930s. Polished aluminum. Retains worn original decals on front. 18 x 6 x 5". One of only a few machines which vends by pulling on a chain. Lock and key.

250/350

72. **Indoor Amusement Co. One Cent Ball Gum Striker Arcade Game.** Los Angeles, ca. 1930s. Countertop striker game. Wooden base with cast aluminum and painted sides and front, copper playing field. A penny dispenses balls which the player shoots with finger striker to achieve the highest score possible and win a prize. Gumball dispenser at side. 19 x 8 ½ x 11". Lock and keys. Working condition. Stamped with serial number "191." Apparently all original parts.

500/700

73. **Fielding Mfg. One Cent "Tom Thumb" Countertop Peanut Vendor.** Jackson, MI: Fielding/Crippen, ca. 1936. White body with black metal base and lid, aluminum chute, and plastic cylinder globe. Height 10 ½". No key. Cracks in plastic, else very good.

150/300

74. **Groetchen Mfg. Imp One Cent Ball Gum Vendor / Trade Stimulator.** Countertop coin-operated machine. Insert a penny and machine vends a gumball while the three-reel slot spins. Line up three of the same brand of cigarette and win a pack. 6 x 5 x 4 ¾".

400/600

75. **Groetchen Mfg. "Dial-It" 10 Cent Punchboard Coin-Operated Machine.** Electric light-up trade stimulator, with original punchboard and marquee paper, body and rear door appear repainted/restored. 18 x 9 x 17".

500/1,000

76. **Mills Novelty One Cent Little Perfection Poker Reel Trade Stimulator.** Chicago, ca. 1901. Original cabinet and reels, replaced base and rear cover. Drop in a penny and win up to 25 cigars depending on the poker hand shown. Height 15 ½".

900/1,300



77

77. Excelsior Race Track Co. 5 Cent Excelsior Automatic Trade Stimulator. Chicago, ca. 1890. Wood and glass horse race trade stimulator. Brass band around the middle. Advertised in the National Police Gazette of 1890. One of the first trade stimulators made. Working. 14 x 14". Rare. Very good. See *For Amusement Only*, p. 96. Restored.

4,000/5,000



78

78. Rola-Ball Vending Mach. Co. One Cent Arcade Game / Gumball Vendor. St. Louis, ca. 1920s. Wooden cabinet with glass-covered pinball-type game. Drop in a penny and a gumball is dispensed, which the player first tries to shoot into one of the chutes and win an additional prize. No rear door. Height 20 1/2". Scattered chipping to cabinet.

400/600



79

79. "Trucky" Delivery Truck Five Cent Gumball Vendor. Floor-standing electric vending machine. Insert a nickel and your gumball runs down a chute operated by a little man and into the back of the truck, which drives in a circle inside the cabinet, finally dumping the gumball into the tray. 49 x 20 x 19". Working. Scarce; fewer than six known.

2,000/4,000



80

80. Play Basketball One Cent Skill Game Gumball Vendor. Original penny arcade machine by E.E. Junior Mfg., which dispenses one gumball to the player, plus any extra the customer manages to shoot into the basket. 19 x 11 x 9".

1,500/2,000



81

81. R.D. Simpson One Cent Double Commander Bulk Vendor. Columbus, ca. 1930s. Polished aluminum Art Deco-style base stamped "1095" with original hexagonal globes. 14 x 10 1/2 x 6". Replaced diamond decals. Locks and keys.

400/600



82

82. Double Nugget One Cent Bulk Vendor. National MFG, ca. 1937. Double aluminum dispensers with square glass globes and colorful "one cent" decals. Machine is attached to a Texas-related Craff cast iron stand. Machine height 16", with stand 42". Original keys. Corrosion to interiors with few glass chips around edges. Working.

200/300



83



84



85



89



91



86



87



88



90



92

83. **Automatic Games One Cent King Jr. Bulk Countertop Vendor.** Circa 1940. Blue painted pressed steel base and lid with glass cylinder globe. Height 10". Original lock and key. Minor metal spotting to lid and base; very good overall. Working.
150/300

84. **Silver King Five Cent Gumball Vendor with Music Box.** Aurora, IL, ca. 1950s. Painted and polished cast aluminum base, the top incorporating a Reuge music box and ballerina which plays when nickel is inserted, as well as vending a gumball. Both mechanisms in working order. Height 18 1/2". No key.
400/600

85. **Regal One Cent Gumball Machine.** Circa 1940s. Unrestored gumball vendor with original decal, teal base and cover. 14 x 6 1/2 x 6". Lock and key.
100/200

86. **Oak Vista One Cent / Five Cent Gumball Machine.** Original red paint, a penny for one vend, nickel for five. Height 17". Serial number J36 315 to back of case. Lock and key.
100/150

87. **Puritan One Cent Gum Vendor Trade Stimulator.** Three-reel countertop slot machine with fortune teller legend that dispenses a gumball for every winning combination as well as reading one's fortune. Original key included. Height 11". Tanned labels, else very good. Working.
300/400

88. **U.G. Grandbois One Cent Wall Mount Gumball Vendor.** Kalamazoo, ca. 1927. Black painted cast iron body and lid with aluminum features and a glass cylinder globe. Push in slide coin entry. Height 11". No key. Inner seal broken, else very good.
200/300

89. **Yu-Chu Co. One Cent Countertop Gumball Vendor.** Newark, NJ: Yu-Chu Co., 1925. Chrome metal body and a 3 QT square glass jar with original Yu-Chu Ball Gum decal advertising prizes for certain colored balls. Height 12 1/2". Original lock and key. Chrome spotting to base, chips with losses to decal. Working.
250/400

90. **Victor Gumball "Zippe" Coaster Vending Machine.** Vintage aluminum and plastic machine vends a gumball from the upper reservoir, cascading down the track and into the slot. Embossed Victor eagle on slot cover. 38 1/2 x 10 x 10". Scattered chipping to finish; not tested. Locks and keys.
100/200

91. **Topper One Cent Gumball Vendor with Baseball Flip Game.** Gumball machine with yellow and black cast iron base and lid, incorporated into a pinball-style base. A penny dispenses a gumball which the player attempts to flick and score a hit or home run. 19 1/2 x 20 1/2 x 8 3/4". Restored. Lock and key.
450/600

92. **Pace Mfg. One Cent Baseball Countertop Skill Game.** Drop in a penny for five shots at flipping a ball to score a single, double, triple, homerun, walk, or out. Your score determined whether you're major or minor league. Height 16 1/2". Working. Restored. Lock and key.
400/600



93. **Bryans Automatic Machine Works Disappearing Disc.** Kegworth, England, ca. 1948. Coin-operated machine performs a conjuring trick: Crank the handle and watch as the jam jar moves over the coin, which vanishes and then reappears. A wheel with accompanying text scrolls by as the feat occurs. 21 x 14 x 12". Original crackle-finish cabinet, nickel-plated corners and front pieces. Lock and key. Working. Modified to use U.S. quarters.

4,000/6,000



94. **Bryans Automatic Machine Works String Cutting Extraordinary.** Kegworth, England, ca. 1947. Coin-operated machine performs a cut-and-restored conjuring trick: Crank the handle and watch as a blade cuts through the string. The severed ends are pulled apart and clearly shown, yet the string is restored to its original condition. A wheel with accompanying text scrolls by as the feat occurs. 21 x 14 x 12". Original crackle-finish cabinet, nickel-plated corners and front pieces. Lock and key. Working. Modified to use U.S. quarters.

4,000/6,000



96

95. **Ideal Match One Cent Safety Matches Vendor.** Chicago, ca. 1900s. Original oak base with cast iron and other metal parts, glass dome enclosing a four-sided matchbook dispenser with cone top and fringe. Mechanism spins a quarter turn and dispenses a matchbook. 18 ½ x 10 x 10". Working mechanism. Original lock, no key.

1,500/1,800

96. **ABT Paper Cup Dispensing Machine.** Chicago: A.B.T Mfg. Co., 1933. A burgundy painted Art Deco wall mounted coin operated machine that most likely dispensed Dixie Cups. Height 46". With keys. Scattered abrasions to paint, overall very good. Working.

300/400



95



97

97. **Columbus Matches One Cent Vending Machine.** Circa 1920s. Cast iron base with tin upper body, painted green. Insert a penny and push the slide to receive a box of matches. Match strikers on top of base plate. Unrestored, heavy pitting and loss to decal. 16 x 7 ½ x 4". Lock, no key.

300/400



98

98. **Baker Novelty One Cent Football "Kicker and Catcher" Trade Stimulator.** Chicago: The Baker Novelty Company, 1935. The right knob is turned making the punter kick the metal ball; the left knob is turned to move the receiver back and forth with the objective of trying to catch the ball. Three balls for a penny. Original lock and key. Height 17 ½". Slight wear to knobs, few paint chips to receiver, age-toned graphics. Working.

400/600



99



100



103



105



106



101

99. Hoffmann Novelty "Little Dream" One Cent Trade Stimulator. Wooden cabinet containing a penny drop game. Win back one cent or up to 25 cents depending on where the coin lands. Original award cards. Height 20" Lock, no key. 300/500

100. Mills Puritan Bell Five Cent Trade Stimulator. 1920s. Nickel-plated trade stimulator with deeply cast imagery of owls, bells, and cowboys, painted yellow and red. 10 x 9 x 7 1/2". Working condition. Locks and keys. 500/700

101. Baker "Pick-A-Pack" One Cent Cigarette Trade Stimulator Dice Game. Chicago, ca. 1939. A pull of the lever causes three dice to bounce inside. Matching all three with the brand at center would win the customer a pack of cigarettes. Celluloid dice advertise Lucky Strike, Chesterfields, Fatima, and Omar. Unrestored, wooden cabinet with cast iron front in silver, orange, and red. 11 x 10 x 8". Lock and keys. 500/700

102. Buckley Cent-A-Pack One Cent Cigarette Trade Stimulator and Gum Vendor. Circa 1930s. Three-reel countertop machine, original mechanism, cast iron case painted black with silver streaks. Make three of a kind to win a pack of cigarettes or five cents in trade. 12 x 9 x 9". Working condition; small chip to rear of case near lock. Small glass pane over window displaying the gumballs cracked. Lock and key included. 300/500

103. Victor Vending Co. One Cent Grand Dad Vendor. Mid-century wooden and gilt metal vending machine with porthole openings on sides, round mirror at top. Height 15". Retains an old Illinois Dept. of Revenue stamp on left side. Lock and keys included. 150/250

104. Five Cent Midget Slot Machine. Columbus, OH, ca. 1932. Two-reel slot machine, cast metal case with orange, green, and red paint. 13 1/2 x 8 x 9". Very good original condition. Working. Lock and keys. 2,500/3,500

105. Superior Confection One Cent Cigarette Trade Stimulator. Columbus, OH, ca. 1930s. Wooden cabinet with Superior decals, base and borders painted green, sides with groove outline painted red. Cast aluminum front of Art Deco design. Mechanism and reel strips appear original, includes "You Cheated Me" shutter card. Restoration includes a replaced rear door and lock, new award card. Working. 11 x 11 x 8". 400/600

106. Big Top Circus "D-Lux Nuts" Countertop Electric Display. Circa 1950s. Lighted roasted nuts countertop display, with three compartments, lid in the form of a circus tent, colorfully lithographed sides, spinning inner paper label of a circus procession, plastic outer cover. Working condition. 20 x 12 x 12". Expected wear to plastic. 300/400



104



107



108



109



110



111



111A

107. **Puritan Confection Vender One Cent Mint Vendor / Slot Machine.** Countertop machine dispenses rolls of mints and acts as a fortune-teller based on the spin of the three slot reels. 10 ½ x 10 ½ x 8 ½". Restored; includes lock and key.
400/500

108. **Puritan Baby Vendor One Cent Gumball / Slot Trade Stimulator.** 1920s. Cast aluminum countertop machine with fortune-telling reels and gumball vendor. 10 x 9 x 8 ½". With keys.
300/400

109. **Daval Mfg. One Cent Gumball Vendor / Trade Stimulator.** 1930s (date of 1933 on side scroll). Cast aluminum countertop machine with fortune-telling reels and gumball vendor. Original jackpot. 10 x 9 ½ x 8". Replacement lock mechanism included but not installed.
500/600

110. **Daval Mfg. Coin-Operated Reel Spot Gumball Vendor / Trade Stimulator.** 1930s. Four-reel countertop machine, painted cast iron. 11 x 9 x 11". Unrestored; appears complete but not in working condition. A scarce machine.
300/400

111. **Lot of Two Coin-Operated Napkin Dispensers.** 1950s. Including Madam X / Jewel Quiz Questions double vendor; and Jewel Quiz Questions single vendor. Larger vendor 8 ½ x 7 ½ x 4 ½". Locks and keys included. Both include a supply of question and fortune-telling slips.
300/500

111A. **Whirlwind Trade Stimulator and Gumball Vendor.** Pierce Tool & Mfg., 1930s. Cast aluminum case with painted red and blue stripes. Original award card. Insert a penny and receive a fortune and gumball. Height 13".
600/900



112



113

112. **The Cail-O-Scope Oak 5 Cent Viewing Machine.** Circa 1900. Original penny arcade machine, oak cabinet and marquee with cast metal legs, view finder, and front ornaments. Drop in a nickel and a series of fifteen stereo-views turn in the lighted cabinet. Includes marquee and cards for the risqué "Talk of the Town" cards, depicting a beautiful woman modeling in a transparent sash. 72 x 21 x 19". Lock and key. Working condition.
2,000/3,000

113. **Clamshell Indian Head Mutoscope with Charlie Chaplin "The Bartender" Reel.** Circa 1900s. Fully restored Mutoscope viewer, painted cast iron includes embossed eagles, busts of American Indians, fruit, and floral scrolls, with marquee. Outfitted electrically with lighted viewing compartment including a reel of Charlie Chaplin acting as a bartender. Coin-operated, but set to free play. 64 x 18 x 18". In working condition.
3,000/5,000

114. **Bishop & Kline 5 Cent Automatic Panorama Machine.** St. Louis, ca. 1890. Early and rare clockwork viewer machine. Insert a nickel and a series of images of a beautiful woman rotates for the viewer. An affixed oil lamp with mirror reflecting into the cabinet illuminates the photographs. 25 x 12 x 10 ½". Locks and keys included. Possibly the only extant example. Restored.
1,600/2,400



114



115

115. Coin-Operated Penny Arcade Mutoscope with Fatty Arbuckle Reel. Cast iron, tin, and brass viewer machine on stand, with original reel featuring Fatty Arbuckle. Re-cast marquee, reproduction insert. Height 66". Working. Lock and key.

1,500/2,200



116

116. Coin-Operated Penny Arcade Mutoscope with John Barrymore Reel. Cast iron, tin, and brass viewer machine on stand, with original reel featuring John Barrymore in "The Sea Beast." Height 72". Original marquee and insert card. Working. Lock and key.

1,500/2,200



117

117. Mutoscope Reel. Subject No. 7699. "A Shocked Beauty." New York, ca. 1920s. Risqué reel depicts a beautiful scantily-clad woman with a Mills Novelty Shocker machine, twirling side to side in front of and around the machine. Some cards bent and worn.

700/1,400



118

118. Mutoscope Reel. Subject No. 7697. "Charming Serenader." New York, ca. 1920s. Burlesque reel depicts a beautiful scantily-clad woman holding a mandolin and dancing. Usual wear to ends of cards. In a period wooden storage crate with hook-and-eye clasp.

400/600



119

119. Mutoscope Reel. Subject No. 7168 / Serial No. 4. "Tom Mix in the Great K & A Train Robbery." New York, ca. 1926. Reel including a scene from the Tom Mix serial. Some cards deteriorated, but good overall.

250/350



122

120. Mutoscope Reel. Subject No. 3216 / Serial No. 45. "The Final Goodbye." New York, ca. 1910s (patent dates of 1895/98). Humorous reel depicts a doomed man in a jail cell seeing his girlfriend for the last time. They passionately embrace before the man's wife arrives, weeping and dressed in black. Some cards bent, otherwise good.

250/350

121. Miele, Ralph. Erotic Mutoscope Marquee Sign. New York: 1931. A full nude photograph of a woman mounted on hand painted heavy cardstock titled "Turkish Delight." 21 1/2 x 14". Several chips and tears to border, some with losses.

50/100

122. Dice Game Five Cent Cigar Trade Stimulator. American, ca. 1890s. Wooden cabinet enclosing a dice-popper mechanism which is activated when a nickel is inserted and the lever pressed, containing five dice within a blown glass dome. Score a certain number and win a cigar. Cast iron door, with lock and key. 13 x 8 1/2 x 8 1/2". Working condition. Trade card and frame later additions.

800/1,200

123. Monroe Barnes Mfg. Crescent Cigar Five Cent Wheel Trade Stimulator. Bloomington, IL, ca. 1890s. Fairest Wheel type of machine, wooden, brass, and copper coin-operated. Place a nickel on the board layout to bet where the wheel will stop. The house drops your nickel in the slot, and if it stops at the spot you chose, win up to 24 cigars. Manufacturer's plate retained on base. Original betting board, wooden backing with tin frame. Wheel 18 x 11 1/2 x 5". Working. Original lock and key. Scarce.

1,000/1,500

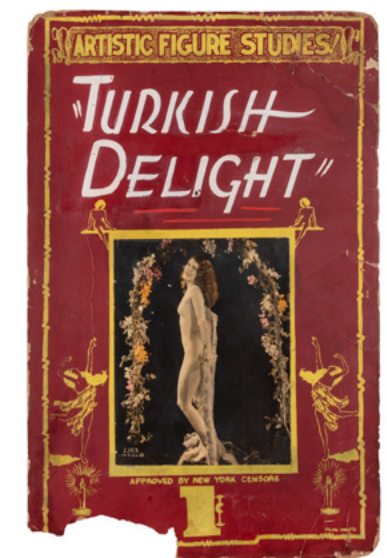
121



123



120



121



124



125



127



126



128

124. **Pana Enterprise Mfg. Fairest Wheel Five Cent Trade Stimulator.** Pana, IL, ca. 1900s. Wooden and brass coin-operated wheel machine with glass cover, retains original stock advertising paper labels, silver lettering to frame, maker's brass plaque below wheel. Drop in a nickel and flick the lever to win 1, 2, or 5 cigars depending on spin. 20 x 15 x 11". Working. Lock and keys. Uncommon.

1,000/2,000

125. **Fairest Wheel Five Cent Cigar Trade Stimulator.** Circa 1890s. Dropping a coin into the slot causes the wheel to spin. Customers would win one, two, or three cigars depending on the number shown. Height 21 1/2". 14" diam. Glass sides. Lock and key (replacement rear door and lock).

700/900

126. **Aspro Aspirin Tablet Coin-Operated Dispenser.** Weybridge: Self-Serve Automatic Machine Co., ca. 1960s. With three slots to insert a sixpence coin and dispense an aspirin tablet, labels applied to each column, black lettering. 14 x 6 x 4". Heavy pitting to right side.

300/400

127. **Five Cent Booz Barometer Sobriety Test Game.** Northwestern Mfg., ca. 1950s. Insert a nickel and see how far you can guide the hoop before shorting out. Lock and key. 18 x 18 x 5". Restored.

300/500

128. **Oak Vista 25 Cent Gumball Machines. Lot of Four.** Each having a white body and lid. Height 16". With keys. Two with cracked globes.

100/200



130

129. **Columbus One Cent Mystery Gumball Vendor.** Green cast iron base and lid, octagonal globe, with lock and key. Height 12 1/2".

400/600

130. **J.P. Seeburg Coin-Operated Nickelodeon KT Eagle Orchestrion.** Chicago: J.P. Seeburg Piano Co., 1920s. Electric coin-operated nickelodeon, original wooden cabinet, leaded glass front depicting eagle and shield. Plays Type G rolls. On/off switches for the piano, xylophone, and castanets and tambourine. 62 x 44 1/2 x 21". Lock and key. Older rebuild, in excellent working condition, providing a clear and booming sound, added master switch to right side. Includes a quantity of music rolls.

5,000/7,000



129



130A



132



131

130A. Rock-Ola 1958 Model 1464 Jukebox. Chicago, 1958. 120 selections. Plays 45 RPM records. 41 x 20 x 30". With stand, new wooden top. Powers on, selector in working order; audio not tested.

1,200/2,000

131. Chester-Pollard "Play Football" Floor Penny Arcade Machine. Circa 1920s. Original penny arcade skill game, attractive unrestored condition, with mechanical football player figures, light-up play area, painted cabinet, printed crowd background and marquee. 72 x 44 x 18".

2,500/3,500

132. U.S. Marshal 10 Cent Target Shooting Arcade Game. Original arcade game tests a player's aim. Height 53". Cabinet with chipping, scattered oxidation.

300/500



133

133. Love Tester Twenty-Five Cent Amusement Machine. Contemporary electric arcade machine. Insert a quarter and squeeze the handle to find out how attractive you are, from "nasty" to "hot stuff." 80 x 21 1/2 x 17". Cast metal claw feet and marquee. Re-created after the design of Exhibit Supply Co. 600/1,200



134

134. International Mutoscope Reel Co. Love Tester / Sex Appeal Arcade Machine. Original sex appeal machine, painted wooden machine, with cast hand plate. Insert a quarter to "test your love" and find out "how hot are you." Height 85". Central glass panel is a re-creation, but original is included (worn). Not working.

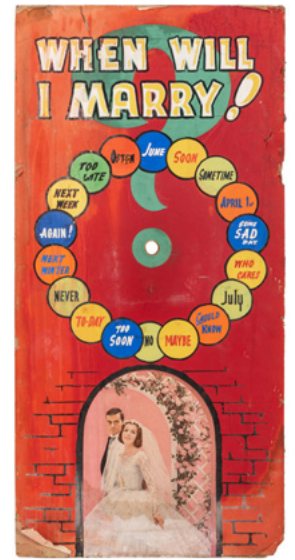
1,000/1,500



135

135. Exhibit Supply Co. Countertop Love Tester Coin-Operated Arcade Machine. Circa 1940s. Wooden cabinet with light-up, field with question mark design. Insert a coin and the machine divines your personality. Working. Height 21". With keys.

500/700



136

136. When Will I Marry? Arcade Insert. Circa 1960s. Hand painted graphics on paper attached to heavy card stock board, once with spinner but now missing. Possibly from a love-tester type of arcade machine. Verso stamp "Crescent Quality Boards." 28 x 13". Paper curling to corners, pinholes to boarders, dampstaining and soiling throughout.

50/100



137

137. International Mutoscope Co. Career Pilot Arcade Machine. Original arcade machine, wooden cabinet with cast iron wheel, and glass panels. Drop in a quarter and spin the wheel to find out what your career will be. Height 82". Not working.

800/1,200

138. Exhibit Supply Co. One Cent Sex Appeal Meter Arcade Machine. Circa 1930. Electric machine in oak cabinet with original glass front that asks "How Attractive are You to the Opposite Sex?" Insert a penny to find out if you're "hot stuff," "overrated," or somewhere in between. 27 1/2 x 11 x 10". Working. Lock and key.

500/700



138



139

139. Exhibit Supply Co. Five Cent Foot Ease Vitalizer Machine. Circa 1950s. Electric arcade machine with wooden cabinet, cast aluminum plaque and health decal, light-up advertising marquee. Insert a nickel and stand on the vibrating platform for a foot massage. 63 x 14 x 26". Working condition. No locks to rear panels.

300/500

140. Exhibit Supply Co. One Cent Astrological Sign Card Penny Arcade Machine. With twelve coin slides (one for each month), which would dispense an astrological card for the month you were born. Marquee covered with sliding glass depicts a wizard in a room with telescope, his room overlooking a city. Height 72". Restored.

1,500/2,500



140



141

141. Exhibit Supply Co. Peep Show Coin-Operated Barrel Viewer. Original figural penny arcade game features busts of a man and woman standing behind barrels. Drop in a coin to light up the inside of the barrel and peep inside. Height 71".

1,000/2,000

142. Exhibit Supply Co. Peep Show Coin-Operated Barrel Viewer. Original figural penny arcade game features busts of a man and woman standing behind barrels. Drop in a coin to light up the inside of the barrel and peep inside. Height 71".

1,000/2,000

143. Exhibit Supply Co. Peep Show Coin-Operated Barrel Viewer. Original figural penny arcade game features busts of a man and woman standing behind barrels. Drop in a coin to light up the inside of the barrel and peep inside. Height 71".

1,000/2,000



142



143



144



145



146



148



149



150



151



147

144. **The Gypsy Fortune-Teller / Grip Test Arcade Machine.** Contemporary. Oak cabinet incorporating two different coin-operated machines; separate plugs. Cast claw feet. Height 73". **1,000/1,500**

145. **Exhibit Supply Co. 25 Cent Coin-Operated Merchantman Claw Arcade Machine.** Chicago, ca. 1930s. Wooden machine with metal castings in Art Deco style. Player inserts a quarter and toggles claw to attempt to dig out a prize. Working crane, lights. Height 71". Handsomely preserved. **2,000/4,000**

146. **Exhibit Supply Co. (ESCO) Claw Digger Arcade Machine.** Chicago, ca. 1930s. Wooden cabinet with cast metal prize drawer and knob. Cabinet is well worn with detached and replaced panels, later coin slide. Height 70". For parts or repair. **1,000/2,000**

147. **Mills 5 Cent Punching Bag Penny Arcade Machine.** Strength-test machine which lowers a punching bag for the customer to strike, measuring the force of your punch. Height 79". Nicely restored, including replaced decals and re-castings; dial and punching bag original. **2,000/3,000**

148. **Hollycrane Miniature Industrial Crane 25 Cent Arcade Machine.** Chicago: Como Mfg., ca. 1940s. Wooden and glass skill game, user presses buttons to move forward and across in attempt to win prize. 48 x 24 x 36". **200/300**

149. **Bally Coin-Operated Claw Digger Arcade Game.** Vintage floor console claw game, coin-operated, with black laminate sides, metal brackets and side panels, tiled interior. Lock and key. Filled with a quantity of prizes. Good. **400/600**

150. **Coin-Operated Ten Cent Vibrating "Body Ease" Chair.** Mike Munves, ca. 1950s. Wooden carnival/amusement park chair with painted headrest promising "more miles out of your aching body," and to improve circulation and fatigue. Insert a dime and the seat forcefully vibrates. Height 52" Working. **800/1,500**

151. **Toledo Scale Co. Coin-Operated Scale.** Original arcade scale, coin-operated, enameled cast iron body. Dial is lettered "No Springs—Honest Weight" and includes an average height and weight chart for men and women at various ages. Height 70". Dial 19" diam. Lock and key. **400/800**

152. **Watling Coin-Operated Fortune-Teller Scale.** Original arcade scale, brown and cream porcelain enamel body, mirrored front. Lock and key. Height 66". **300/500**



152



153



154



157



158



159



161



160



162



155



156

153. **Watling Coin-Operated Scale.** Original arcade scale, mirrored front, placard asks "How Much Do You Weight?" and top provides a key of average height and weights of men and women. Height 48". Lock and key.

250/400

154. **Watling Coin-Operated Ten Cent Scale.** Original arcade scale, mirrored front, placard asks "Have You Gained or Lost Weight?" Lock and key. Height 67".

250/400

155. **Columbia Weighing Machine One Cent Scale.** Original coin-operated arcade scale. Insert a penny and find out your weight. Height 70".

250/400

156. **Peerless Junior Coin-Operated Scale.** Original coin-operated arcade scale. Insert a penny and find out your weight. Height 62". Patent dates of 1915/16.

250/400

157. **Change Maker Machine.** Circa 1950s. A chrome plated penny changer that gave five pennies for a nickel. This device was used in a place that had coin operated machines that the patron would need change for. Original lock and key. Height 9". Minor spotting, else very good.

50/100

158. **Brandt Automatic Cashier Machine.** Chicago, early 20th century. Pushbutton machine ornately cast with griffins on the sides. 10 1/2 x 14 x 8 1/2". Very good. Plate with patent dates from 1898/1913.

100/200

159. **Brandt Junior Automatic Cashier Machine.** Chicago, early 20th century. Pushbutton machine with ornately cast sides depicting griffins. 15 x 9 x 9 1/2". With slide and tray attachments. Plate with patent dates from 1909/26.

100/200

160. **Cast Iron Exhibit Supply Co. Coin Dispenser.** Stamped "Exhibit Supply Co./Chicago Ill." to base, five columns with lever at side to release change. Accommodates pennies or dimes. 11 1/2 x 9 x 5 1/2".

200/300

161. **A 19th Century Wooden Security Alarm Till.** Pulling the keys to underside releases drawer, and a bell will ring if attempt to open drawer is made. Lettered on top "Security Alarm Till/ St. Louis 1894" and outfitted with compartments for cash and coins, one removable coin tray. 18 x 16 x 5".

50/150

162. **Oak Slot Machine Stand.** Having a frosted and beveled glass front, cast claw feet and brass door handle, one internal shelf. 34 x 17 x 17". Moderate scratching to top and sides.

200/300

163. **Pair of Oak Slot Machine Stands.** Having leaded glass fronts featuring painted tulips, cast claw feet, both with one interior shelf. Locking doors, includes one key compatible with both. 34 x 17 x 17". One glass panel broken, light to moderate scratching.

400/600



163



164



167



169



165



166



168

164. **Wooden Slot Machine Stand.** Sturdy wooden stand, finished on all sides. 31 x 17 x 17".

50/100

165. **Pair of Cast Iron Ticket Holders.** Nickel-plated cast iron footed holders, both with six slots on two tiers with openings to show denomination. Height 4". With a quantity of old tickets, cardstock, printed "Pay Cashier."

50/100

166. **Miscellaneous Slot Machine / Arcade Game Parts. Lot of 5.** Including a slot machine rear door/cover (Mills[?]); a 25 cent coin entry slide by Comet; a metal horoscope marquee (several broken letters); wooden arcade machine cabinet with cast iron claw feet; and a 1990s electric slot machine front. Sold as is.

50/100

167. **Skatter Ball Countertop Arcade Game.** Dobco Enterprises, ca. 1990s. Electric arcade game, hard plastic and Lucite with original decals, light-up launcher arch. The player manually moves a basket side to side and wins a prize if able to catch the ball. Height 33". No balls, launcher not tested.

50/100

168. **I.Q. Computer 25 Cent Upright Game.** American: Nutting, 1980. No key. Not tested.

50/100

169. **Keeney Twin Super Bell 5 / 25 Cent Slot Machine.** Circa 1940s. Floor console slot machine, brightly painted cabinet, glass marquee showing paint loss. 56 x 33 24". With Bueschel's *Guide to Super Keeney Bell* (1981) filled with technical data. Powers on, but not fully functional.

200/300



170



172



171



173



174



175

170. **Unscramble Coin-Operated Arcade Game.** Original coin-operated spelling game by Allied Leisure Industries, in which players attempt to unscramble words. With an extra upper marquee with electronics. Height 59". Powers on.

150/250

171. **One Cent "Hi-Lo" Countertop Bagatelle/Pinball Machine.** Chicago: Northwest Coin Mach. Co., ca. 1930s. Oak case with poker themed playing field. A penny is inserted into slot to release five balls, highest score wins. 24 x 15 x 6". Slight wear to graphics; corner chip to title. Working.

250/400

172. **One Cent "Hi-Lo" Woodrail Pinball Machine.** Chicago: Northwest Coin Mach. Co., ca. 1930s. Poker themed playing field; 10 balls for a penny. Original wooden legs. Height 32", playing field length 38". Playing field and graphic inserts in very good condition. Working.

300/400

173. **One Cent "Score-M-High" Countertop Bagatelle/Pinball Machine.** Chicago: The Ad-Lee Company, ca. 1930s. Oak case with chrome marquee and Art Deco graphics. Five balls for one penny; one ball is gold which counts for double points. 19 x 13 x 7". Few wood splits to playing field, else good. Working.

300/400

174. **Exhibit Supply Co. Fast Ball Pinball Machine.** Exhibit Supply Co., ca. 1946. Baseball-themed pinball machine, back-glass with image of a hitter slamming a home-run as the crowd cheers. Several bumper caps loose or missing, scattered wear to cabinet.

400/700

175. **Bally Play Ball 5 Cent Pinball Machine.** Bally, ca. 1941. Baseball-themed pinball machine, the back-glass depicting a baseball diamond, scoring the player's home runs. 52 x 23 1/2 x 39" (exclusive of legs). Includes keys. Scattered wear to cabinet.

400/700



176



177



179



178

176. Northwestern Poosh-M-Up "Big Five." Pair of Bagatelle Games. Circa 1940s. Wooden, glass, and metal games with original playfields and built-in folding supports. One is battery-operated (not tested). Unrestored and showing wear; sold as is. 50/100

177. Big Shot Bagatelle Game. New York: Gotham Pressed Steel, ca. 1930s. A spring loaded table game with Medieval-like graphics, chrome metal obstacles, and black metal frame housing. Original packaging and ten marble balls included. 24 x 12". Few tears to graphics, else very good. Works. 50/100

178. Max Glass Mfg. Hockey Ten Cent Console Arcade Game. Circa 1940s. Floor model console game. Stenciled wooden panels, painted wooden hockey arena with cast metal and painted goalies which turn with knobs to attempt shots and defend. 38 x 44 x 24". Lock, no keys. 500/800

179. Gun Smoke 5 Cent Upright Game. Chicago: Games Inc., [n.d.]. Lock and key. Glass excellent. Some rust. Not tested. 100/200

180. Batman Small Video Game. Atari, 1978. Wood cabinet. 21 x 16 1/2". Working well. A bit of a quandary, this table- or bar-top game is in the style (and time period) of Galaga and Galaxian, however upon start up, it clearly states "Batman" as the game title. Possibly a custom-made game, set for free play. Some wear to console. 50/100



180



181



182



183



184



185



186



187

181. Goin' Rollin' Coin Roller Arcade Redemption Game. Bay-Tek, ca. 1990s. Arcade game tests a player's timing by trying to launch coins into openings in the spinning wheel to win tickets. Score five straight and win the jackpot. Bright graphics. 53 x 43 x 25". Working. 250/350

182. Smokin' Token Coin Roller Arcade Redemption Game. Bay-Tek, ca. 1990s. Arcade game tests a player's timing by trying to launch coins into openings in the spinning wheel to win tickets. Score five straight and win the jackpot. 53 x 32 x 25". Working. 200/300

183. Silver Falls Water Park Coin Pusher Arcade Redemption Game. Global Entertainment Products, 1990s. With three coin slots, ticket return. Working, including audio. 57 x 49 x 25". 200/300

184. Sammy USA Sports Arena Merchandiser Machine. Powers on including flashing lights. Height 75". 200/300

185. The Rolling Stones Slot Machine. Contemporary Japanese electric slot machine with panels depicting members of the band. 31 1/2 x 18 x 14". Lights up and sounds alarm when powered on. Lock and key. 100/200

186. IGT Double Diamond Electric Slot Machine. 41 x 21 x 14". Does not power on; sold as is. 100/200

187. IGT Slam Dunk Electric Slot Machine. 44 x 22 x 19". Powers on. Lacks upper marquee. 100/200



188



189



191



190



192



193



195

188. Bally Montana Joker Video Poker Machine. 41 x 18 x 20". Powers on.

100/200

189. Bally Draw Poker Video Poker Machine. Vintage video gambling machine. Does not power on. Some veneer chipped.

100/200

190. Exhibit Supply Co. One Cent Card Vendor. Oak cabinet, mirrored front. 17 1/2 x 18 x 11". Restored. Locks and keys.

350/500

191. Exhibit Supply Co. Vacuumatic Card Vender. Chicago, ca. 1930s. Two-column coin-operated dispenser of Exhibit cards, original cabinet. Glass cracked and crudely held with tape. 36 x 23 x 16". Includes an extra card vending mechanism. Well worn; for repair and sold as is.

100/200

192. Lot of Exhibit Supply Co. Inserts / Advertisements. Chicago, 1940s. Approximately 20 pieces, being small posters and prints which would be inserted into the fronts of machines to advertise Exhibit Supply Co. cards. Includes Jackass Ration Cards, A Guide to Romance and Success, How to Woo and Win a Husband, and others. Sizes 19 x 13" or smaller. Majority in poor or fair condition; sold as is.

100/200

193. Puritan Novelty Co. Tradeboards Catalog. Chicago, ca. 1920s. Stapled wrappers. 4to. 28 pages. Dealer catalog with illustrations, prices, and descriptions of numerous Puritan punch boards on themes such as golf, boxing, flight, movie stars, and gambling. A valuable reference. Light creasing; very good.

40/80

194. Jar-O'-Do and Lucky Seven Gambling Pull Tab Match-Paks. Approximately 100 packs. These were game tickets that were handed out at events where the potential winner would pay \$1 for 10 tabs and would match up their numbers hoping for a larger payout. Overall very good.

40/80

195. English Carved Rooster / Cockerel Carousel Figure. Attributable to Orton & Spooner, late 19th/early 20th century. Deeply and extensively carved body of feathers, running pose, with inset yellow and amber glass eyes (1 1/4" diam.), stripped of paint with only traces remaining around saddle. Retains old hardware, detachable head. On a custom rolling hardwood stand with brass pole. Height 64 x 72 x 12".

4,000/6,000



194



196



197



198



199

196. **Carved Wooden Clown Ball Toss.** Modern. Polychrome hand carved half life-sized clown with waistline bullseye; when the target is hit, the clown's hinged tongue sticks out of its mouth. Height from base 46". Scattered wear with some paint loss. Good.

100/200

197. **Spinning Gambling Wheel Dartboard.** Early 20th century. Painted wooden wheel with metal wires affixed to a board that once was attached to a wall at a butcher shop. A customer would throw a dart at the spinning wheel and would either win a ham or a bacon depending on the number they hit "Odd A Ham/Even A Bacon". Height 25". General dart holes and wear as usual.

150/250

198. **Antique Brass Gaming Wheel with Spinning Pointer.** American, 19th century. Brass wheel divided into ten sections with numerals, on short brass posts, flick the lever to spin the pointer. 10 x 10 x 1 1/4".

50/100

199. **Large Spinning Gaming Wheel on Stand.** Modern fiberboard wheel with star design, on cast iron stand, numbered 1 to 30. Height 41". Diam. 28".

150/250

ADVERTISING



775

792

795

769



200



201



203



202

200. **Devil Grip Tire Tube Patches Large Display Advertising Tin Barrel.** Hopkinsville, KY, ca. 1940s. Brightly colored display tin barrel with three internal shelves, depicting the company logo and devil characters along with ad slogans. 24 x 10 x 10". A removable custom oak top had been made for the piece to act as a side table.

900/1,300

201. **Davis Baking Powder Wooden Barrel with Tabletop.** Large fiberboard barrel advertising the Hoboken, NJ baking powder company, with original lithographed paper sides, lid, and metal strips. A custom fitted tabletop has been added for the piece to use as a side table. 25 x 17 1/2 x 17 1/2". Scattered nicks and losses to paper.

250/350

202. **Standing Brown Bear Country Store Taxidermy Figure.** The bear standing upright with arms extended around a painted wooden pole with brass knob, on an oak platform. 62 x 20 x 20". Finely preserved, retaining claws, with thick and clean coat of fur, unobtrusive slight tear to right ear.

1,000/2,000

203. **Sturgeon Registration Wooden Fishing Contest Sign.** American, ca. 1960s. Wooden sign in the form of a sturgeon, with white lettering and attached wooden fins. 72 x 12".

100/200



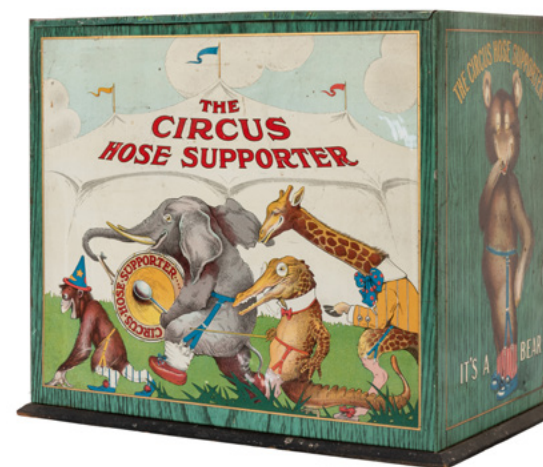
205



206



207



204



208

204. **The Circus Hose Supporter Tin Advertising Case.** Circa 1910s Lithographed tin and wooden display cabinet with three shelves, the panels with whimsical illustrations of circus animals in the company's supporters, including their bear mascot. Base and inside shelving painted black. 12 x 8 1/2 x 13". Stains and scratches heaviest on top, graphics bright and quite clean overall.

400/600

205. **Diamond Dyes Advertising Display Cabinet.** Burlington, VT: Wells & Richardson Co., ca. 1911. Charming embossed tin lithograph front panel of children playing. Tin instruction panel on rear. Opens from either side. 24 x 14 3/4 x 9". Ring stains to top of cabinet, other scattered wear.

400/600

206. **Diamond Dyes Advertising Display Cabinet.** Circa 1910s. Lithographed tin panel depicts children jumping rope. Oak cabinet with one shelf and vertical dividers. 24 x 16 x 8 1/4". Hook closure. Rust spotting and toning to panel, otherwise good.

400/600

207. **Sunset Soap Dyes Countertop Display Case.** Wooden base with lithographed tin advertising panels, by Utility Art Displays (Philadelphia), the compartments filled with old boxes of the products. 7 1/2 x 18 x 13 1/2".

200/400

208. **Gold Blast Odorless Feathers Pillow Display Case.** Circa 1890s. Wooden display case with rounded glass front, stenciled marquee advertises the Chicago-based feather pillow company. 26 1/2 x 17 x 12". One side rail detached, will require repair.

250/350



209



210



211



213



214



212



215



216



217



219



218

209. Nufashond Elastic Spool Advertising Display Case. Circa 1920s. Countertop display cabinet with medallion decal to front, gilt lettering to the hinged slanted door. 8 ¼ x 19 x 6". Very good.

100/200

210. Hickory Elastic Wooden Counter Display Case. Counter advertising case, wooden with glass sides, the slanted lid lettered with the brand name, with dividers and stenciled sizes lettered in gilt internally. 13 x 7 ½ x 6 ¼". Restored.

100/150

211. The Laura Sterilized Hair Net Display Case. Circa 1920s. Countertop wooden and glass display cabinet with original lettering and lithographed label. Tin insert with paper label of various hair types. 8 x 15 x 8".

100/200

212. Dr. Daniels' Veterinary Medicines Store Cabinet. American, 19th century. Embossed lithographed tin panel set in original wooden cabinet with internal shelving for product. 29 x 21 ½ x 7 ½". Panel with rust spots throughout and some losses.

400/600

213. McCourt Label Co. Drug Store / Apothecary Cabinet. Bradford, PA, ca. 1900s. Oak cabinet with three drawers, outfitted with 37 compartments to dispense wax labels for various compounds. Original decal to cabinet, many original label rolls retained. 13 x 22 x 7".

200/400

214. Sunlight Banner Show Case Display Cabinet. Antique oak cabinet, glass sides with original sliding mirrored doors, maker's plaque retained on front. 44 ½ x 25 ½ x 13 ½".

200/300

215. Merrick's Six Cord Spool Cotton Revolving Cabinet. Round oak cabinet, rotating cylinder, glass panels with goldleaf lettering, original maker's plaque with patent date of 1897. 20 x 18 ½ x 18 ½".

600/900

216. Munyon's Home Remedies Advertising Medicine Cabinet. Coshocton, OH: American Art Works, ca. 1890s. Wooden and tin cabinet with slanted top, with printing on all sides advertising Munyon's Homeopathic Home Remedies, portrait of Munyon on top with the quote "I would rather preserve the health of the nation than its ruler." Three drawers with dividers, list of contents for cures of various diseases. 14 x 12 x 14". Unrestored, heavily worn. Retains manufacturer's celluloid label.

200/300

217. Haskins' Pumice Soap Crate with 100 Boxed Bars. Early twentieth century wooden crate printed on all sides, containing 100 original boxed bars of the manufacturer's pumice soap. 19 x 13 ½ x 7".

200/300

218. Utica Drop Forge & Tool Co. Advertising Country Store Cabinet. Coshocton, OH: American Art Works, ca. 1910s. Lithographed tin façade depicts the company's line of "nippers and pliers," with five compartmentalized drawers to hold product. 14 x 18 x 9 ½".

200/300

219. The New Liquid Veneer Wall-Mount Advertising Display Case. Tindeco, ca. 1910s. Oblong tinplate display case, yellow body with lettering in black and red, holding six boxes. Includes several boxes. 21 x 3 x 3 ½". Scratches and scattered paint losses.

150/250



220



222



223



221

220. **Pair of Apothecary Show Globes on Stands.** Late 19th century. Ornate cast brass tripod base with hoof-like feet holding the tear drop globes topped with original cast brass crowns. One globe frosted, the other clear. These were designed to hold colored water. Height 41". Interior glass flaking to upper portion of clear globe; fading to upper portion of frosted globe. Very good.

1,500/2,500

221. **Wright's Union Suits Tin Sign.** Ohio: American Artworks Corporation, ca. 1920s. Two paneled outdoor tin sign advertising men's wool underwear for the Wright's Health Underwear Company. Framed, overall size 71 x 24". Overall scratches and discoloration, else good. Uncommon.

800/1,000

222. **Country Store Oak and Glass Collar Display Case.** American, ca. 1910s/20s. Displaying nine Earl & Wilson collars, held with pins to the rear posts. Thick glass sides, oak base with felted inner surface. 25 x 6 x 21".

400/600

223. **F.J. Sherrard Jeweler Oversized Pocket Watch Sign.** A cast iron frame with aluminum face outdoor store display with double sided hand painted graphics advertising a jewelry shop. Height 23", diameter 18". Scattered abrasions to face. Good.

800/1,200



227



224



225



226



228

224. **Half-Scale Lingerie Mannequin Window Display.** New York: Form Co. Inc., ca. 1930s. An Art Deco designed painted mannequin, fancy lettering on chest reads "H&W," and displaying an original sample brassiere and girdle. Height 32". Minor wear to wooden base, stamped underside by the maker; very good.

250/350

225. **Mannequin Head Store Display.** Circa 1900s. A plaster of Paris bust of a brunette-haired woman. Heavy. Height 13". Paint cracking and fading; good.

100/200

226. **Mannequin Head Store Display.** Circa 1930s. A plaster of Paris bust of a blonde-haired woman. Height 15". Occasional spotting to base, paint chipping to hair and lips.

100/200

227. **Hill Brothers Women's Clothing Advertisement.** New York: Sackett & Wilhelm Litho Co., 1893. A panoramic view of "Easter Sunday on 5th Avenue" with women dressed in period attire pouring out of Sunday Mass. Each woman is dressed differently and has a corresponding number underneath them; presumably an easy way to identify their outfit when a customer sees this advertisement. Matted, sight 25 x 48". Minor spotting to margins, mostly trivial. Very good.

600/800

228. **"Five Minute Home Cleaner" Washing Machine.** Chicago, ca. 1930s. A glass jar sits a top of a metal base, a handle is cranked back and forth moving the jar until contents are cleaned. Height 16". Inner glass crack to base, minor oxidation and wear to metal; overall good.

50/100



229



230



233



232



231



234

229. **Painted Sheet Iron Cowboy Boot Trade Sign.** American, early or mid-20th century. Boot form painted black and red on both sides, with mounting bracket, used to advertise shoe repair or boot-making. 33 x 20 1/2".

250/350

230. **Large Wooden Scissors Tailor Trade Figure.** Painted scissors, the shears lettered: "Tailor Shop/est. 1869/The Best Clothing in Town." Width 29".

200/400

231. [Prohibition] **Double-Sided Woman's Christian Temperance Union Porcelain Street Sign.** 1930s. White porcelain sign with black lettering, credited "WCTU" on the corner of both sides, featuring a skull and crossbones and likening alcohol to poison. 35 1/2 x 48". Losses and bent areas along top edge, generally not affecting lettered areas.

1,500/2,500

232. [Wisconsin] **Hooker Lake Hotel Double-Sided Porcelain Sign.** Circa 1930s. Hanging roadside double-sided porcelain sign for the hotel near Hooker Lake in Salem, Wisconsin. Listing the proprietor, Matt G. Siebert. 14 x 72". Retains hanging chains. Unrestored, with dents, porcelain losses, and oxidation.

800/1,200

233. **The Palace Hotel / Missoula, Montana Embossed Tin Sign.** Circa 1920s. Black tin sign with embossed fancy yellow lettering advertising the hotel's "comfortable rooms \$1.00 and up." Professionally framed, 11 x 29" overall. Light scratches.

800/1,200

234. **The Salvation Army Porcelain Advertising Sign.** American, ca. 1960s. Shield-form sign for the charitable organization. Touch-ups in several areas. 36 x 30".

250/400



235



236



237

235. **Spearman Ave. Double-Sided Porcelain Street Sign.** Vintage sign with openings for mounting. 29 x 6". Slight paint losses and rust to top edge.

150/300

236. **Waterman's Fountain Pen Selection Service Porcelain Sign.** Circa 1920s/30s. Porcelain advertising sign with blue and yellow lettering. A few losses to blue background repainted, otherwise very good. Mounted to wooden backing.

400/600

237. **Little Paterno / A 5 Cent Cigar of Quality Tin Sign.** Circa 1910s. Yellow and black advertising sign with the cigar manufacturer's name on a red scroll. 13 x 37 1/2". Scratches, scrapes, and oxidation, scattered dents.

150/250

237A. **Cast Iron Funeral Parking Sign.** Semi-circular cast iron sign on stand, embossed lettering on both sides, one side reading "No Parking," the other "Quiet Zone." Height 48".

200/300

238. **Hanging Antique Optometrist Trade Sign.** American, ca. 1900s. Gilt metal sign in the form of spectacles, with original blue-tinted glass inserts. Wire for hanging attached at bridge. 24 x 12 x 1 1/2".

700/900

239. **Hanging Optometrist Trade Sign.** American, ca. 1930s. Painted tin advertising sign in the form of spectacles. 45 x 16 x 1 1/2". Dented in a few areas.

300/500



237A



238



239



240



245



246



247



248



241

240. Connecticut Fire Insurance Company Tin Sign. Hartford/New York, ca. 1870s. A colorful bird's eye view looking directly west at the sprawling city of Hartford with streets, parks, buildings, and railway dominating the scenery; the historic Connecticut State Capitol building can be seen to the north with its iconic golden dome. Verso is stamped "W.L. Cort & Co./New York." 22 x 27 1/2". Side laceration and punctures; overall soiling and abrasions; does not lay flat. Sold as is.

200/300

FOR AMUSEMENT ONLY

242

241. Ladies Rest Room Tin Sign. 20th century. Hand painted shadow lettering with a finger pointing "up stairs." Original framing, overall 11 x 18". General spotting; good.

200/300



243

242. For Amusement Only Sign. A painted black and yellow steel attraction sign. 4 x 16 1/2". Very good condition.

50/100

243. Johnson & Johnson Baby Department Sign. Circa 1960s. Wooden and glass sign, blue background with red and gilt lettering. 7 1/2 x 29 1/2". Slight scratches and losses.

100/200



244

244. Western Union "Telephone Your Telegrams" Metal Flange Sign. Original porcelain enamel flange sign with raised lettering and an image of a telephone. 14 1/2 x 13 1/2". Rust and losses at edges, scattered re-painting.

300/500

245. Gates Car Mats Metal Sign. Original porcelain sign with posts for mounting to display. 14 x 19 1/4".

100/200



249



250



251

246. Gift House Stamps Metal Sign. Original sheet metal sign printed in brown and yellow. 17 3/4 x 11 3/4".

100/200

247. Don't Dig / Gas Pipeline Metal Warning Sign. Original modern sign issued by ANR Pipeline. 14 x 10".

50/100

248. Atlantic White Flash Porcelain Gasoline Sign. Circa 1930s/40s. 52 x 35". Attractive condition with some losses around edges.

300/500

249. Wooden and Zinc Straight Razor Trade Figure. American, early 20th century. White polychrome handle, folding heavy zinc blade. Length 30" (open). Paint losses, otherwise good.

250/350



252

250. Bickmore Easy-Shave Cream Diecut Sign. Mid-century diecut cardboard sign depicting a young man commonly believed to be Ronald Reagan, a company spokesman at the time. 32 x 21". Slight wear to edges.

100/200

251. Painted Tin Apothecary Sign. Early twentieth century tin sign painted in black with gilt lettering, pointing finger. 9 x 36". Losses around edges.

150/250

252. Star Soap "Extra Large / Extra Good" Metal Sign. Original porcelain enamel sign. 26 x 20".

500/750



253



254



255



256



257



258

253. Tydol Embossed Metal Calendar Sign. Circa 1930s/40s. Double-sided black hanging metal sign with embossed lettering on both sides, and adjustable black metal numerals for the date. 10 1/2 x 12 1/4". Scratching and oxidation. 100/200

254. Hanging Wooden Law Offices of Murphy & Hedberg Sign. Circa 1950s. Double-sided wooden sign, cream background with black and silver hand-lettering. Wire hanger. 18 x 31 1/2". Small paint losses to edges. 200/300

255. Vintage Southern Style Diner Sign. Circa 1950s/60s. Plexiglas sign with graphics of fried chicken and shrimp, biscuits, and French fries. 24 x 50". Oxidation residue around border from metal bracket it was once housed in; good. 200/300

256. Plastic Ice Cream Parlor Signs. 2pcs. Large 3-dimensional molded plastic ice cream sundae signs. 30 x 24". Scattered scuffs and abrasions, slight soiling inside of frame. 300/500

257. Canada Dry Spur Soda Advertising Poster. Mid-century offset lithograph cardboard sign, with glossy finish, depicting a ranching scene, two girls enjoying beverages by a campfire while a man plays guitar. 20 1/2 x 14". Verso of the sign has an amateur painting. Worn and creased in spots, main image bright and attractive overall. 100/200

258. Sleep Soundly / Drink Ghirardelli's Ground Chocolate. Circa 1950s. Window card poster (26 1/2 x 21") advertising the famous chocolatier's product as a sleep aid. On a thick cardboard backing, as issued. Small abrasions to image, creases and darkening to margins, otherwise very good. 200/300



259



260



261



262



263



264

259. Fowler's Cherry Smash Ruby Glass Syrup Dispenser with Lid. Circa 1940s. Ruby red glass syrup dispenser with original lid and original manufacturer's-provided base, embossed "Property of John Fowler." Globe 8 x 7 1/2". Nozzle not original; some chipping to glass at base not affecting appearance or stability. 250/350

260. Hires Root Beer Syrup Dispenser with Original Pump. Circa 1930s. Ceramic syrup dispenser lettered on both sides, older replacement pump. 14 1/2" x 7 1/2". Scattered chipping to upper rim, repaired crack with repainting at bottom, not affecting lettering. 200/300

261. Royal Sugar Cones Large Advertising Tin. 1930s. Large storage tin which accommodated 300 ice cream cones. Height 15". 12" diam. With handles and lid. Dents and scratches. 80/125

262. Coca-Cola Serving Tray. The Roadster Girls. Coshocton, OH: American Art Works, ca. 1942. 13 x 10 1/2". Strong colors, with moderate scratching and surface residue. 80/125

263. Dixie Peanut Butter Twenty Pound Tin Pail. Boston: Kelly Peanut Co., ca. 1910s. Large twenty-pound tin with wire handle. No lid. 9 x 10 1/4 x 9 1/2". Moderate dents, scratches, and discoloration. Uncommon in this size. 100/200

264. Pair of Planters Peanuts Jars and Lids. Circa 1950s. Clear glass jars with peanut-shaped handles on lids, one with yellow graphics, the other with embossed lettering and images. Height of taller jar 12 1/2". 150/250



265

265. Atlantic City Steel Pier Diving Horse / Water Circus Metal Sign. Circa 1930s. Metal sign in wooden frame advertising the iconic act which featured a horse and equestrian diving together from a platform 30 or 40 feet high. 22 x 51" overall.

500/700



266

266. Antique Syrup Dispenser with Glass Globe. An early twentieth century dispenser, aluminum base with heavy cut glass globe and lid, spigot stamped "Rotax." Height 17 1/2". Diam. 9". Chipping to rim of globe, metal pitted.

150/250



267

267. Heinz Pickling Cider / Vinegar Glass Dispenser. Barrel-shaped dispenser on frosted base, embossed logo. With glass stopper and cork spigot. 17 x 7 1/2 x 7 1/2". Scratches and small chips to edges.

150/200



272

272. Jacobs Superb Chocolates Pennant. Kalamazoo, MI: Merchanto Publishing Co., ca. 1920s. A deep purple felt souvenir pennant advertising Jacobs chocolates that were "Made Last Night." Length 34". Tassels slightly frayed, some discoloration to lettering, else very good condition.

80/125



273

273. Chicago Ess-Tee-Dee Dandruff Shampoo Felt Pennant. Chicago, ca. 1910s. Black advertising pennant with yellow lettering, listing the company's Van Buren St. address with the tagline "It makes the Head Happy." 23 3/4 x 8 1/2". Well preserved with strong lettering. Uncommon.

150/250



271

271. Chicago Certified Tailoring Wool Fabric Salesman's Samples in Original Case. Chicago, ca. 1930s. Black vinyl travel case with inner paper advertising label, filled with vintage wool fabric samples with price labels affixed. Leather handle snapped, otherwise good.

80/125



274

274. Black Forest Carved Bear Smoking Stand with Music Box. Circa late nineteenth century, depicting a standing bear, hinged at his neck which opens to a storage chamber. The bear's right arm supports the tabletop, ornately carved with acorns and leaves and with three smaller sitting bears, two acting as handles for storage compartments, one concealing a Swiss music box which plays when the cover is lifted. Opening at front would accommodate a round ashtray. 35 x 20 x 17". Music box in working condition. Cover of left compartment a later replacement, otherwise very good.

1,000/2,000



275

275. Plaster Pipe / Tobacco Store Trade Sign. Plaster cigar painted black and silver, with mounting bracket. 24 x 11 x 6". Small chip at top of silver band not visible when mounted.

100/200



270

270. Monarch Finer Foods Salesman Sample Portfolio. Dubuque, IA: Monarch Finer Foods, ca. 1939. Pebbled black portfolio stamped with the Monarch name. Folio (18 1/2 x 12"). Thirty-one pages filled with tipped-in colored lithographed product labels. In addition, there are photographs of Monarch's locations throughout the U.S. and photographs of how their merchandise should be displayed and much more.

150/250

269. Stoppenbach's Sausage Wooden Advertising Thermometer. Corona, NY: Dorfman, ca. 1940s. Wooden thermometer with printed advertising for the Jefferson, Wisconsin butcher. 15 x 4". Temperature measure inaccurate.

50/100

268. Freihofers Quality Cakes Counter Display Cabinet. Vintage ventilated cake cabinet with lithographed tin advertising panels, faux wood-grain top, metal shelving, glass enclosed. 22 x 14 3/4 x 17". Scattered rust spots, scrapes, and other wear.

400/600

268



276

276. R.G. Dun Reverse Painted Glass Sign. Mid-century glass sign painted in gilt with red lettering, in a heavy period frame. Loss of paint at top, top edge of frame lacking. 56 x 17". Sold as is.

150/250

277. Smoke 747 Cigar Wooden Sign. Vintage wooden sign with black lettering, possibly for La Corona. 11 1/2 x 18".

50/100

278. Small Countertop Tobacco Wooden and Glass Display Case. Circa 1900s. With rear hinged door. Includes 15 old sealed packages of varieties of smoking tobacco by Beech-Nut, R.J. Reynolds, Bendixen, and others, some retaining tax stamps and wrappers. 19 x 6 x 6". Wood chipped at front left side.

200/300



278



279

279. Group of Cigar / Tobacco Signs and Advertisements. Fourteen pieces, including two tin signs: Councilman strip sign (2 3/4 x 17 3/4") and Walch "Our Ida"/"White Flyer" (framed, 16 x 10"); the others paper and cardboard, including Red Dot cigar-shaped folding cardboard sign (width 36"); Thendora "The Bouquet of Quality" (7 x 15"); and other smaller pieces.

200/300

280. Duraelectric Corp. Cigar Lighter "For the Home" in Original Box. Circa 1920s. Uncommon and early electric cigar lighter, retaining original corrugated box, unit with all original parts. Power cord retained, but covering crumbling. Approx. 7 x 4 x 4". Not tested.

200/300

281. Midland Jump Spark Cigar Lighter Model L. Davenport, IA, ca. 1920s (paten dates 1909, 1910, 1920). Serial number 129163. Oak cabinet, retaining maker's plaque; lacks cap to fuel tank. 15 x 7 x 7". Scattered chipping and wear to cabinet.

200/300



281



282

282. Ray Schumacher Counter Cigar Lighter. Brass lighter in oak cabinet, marked "Handcrafted by Ray Schumacher/Battle Lake, MN." Battery-operated. 15 1/2 x 8 x 10". Not tested.

150/250

283. Lot of Six Vintage Ashtrays. Six ashtrays and one humidor. Ceramic, cast metal, wood, and glass.

100/200

284. Large Collection of Cigar Boxes. Collection of antique and vintage cigar boxes filling two large bins. Should be seen. Additional photos on request.

200/400

285. Miscellaneous Tobacciana. Lot of 7 Pieces. Including Zippo fuel station fluid dispenser; Corina Larks tin and glass display case; Satin Turkish Cigarettes serving tray (heavily worn); El Verso tin tray; Hambone plate; two modern smoking signs; and eight old packages of pipe and cigarette tobacco, various brands.

100/200

286. Lot of Tobacco and Other Advertising Tins. Approximately 30 pieces, most for tobacco, including Allen & Ginter's, Yankee Shag, Old English, Ritepoint, George Washington, Bond Street, Amphora, and others. Tallest 5 1/2".

100/200

287. Dixie Queen Plug Cut Smoking Tobacco Lunch Pail. Maryland, ca. 1910. A colorful tin litho advertising the tobacco brand, equipped with wire handle and metal latch; tobacco tax stamp still attached. 8 x 5 x 4". Few dents and scuffs to lid, minor oxidation to interior.

100/200

These tobacco tins were designed in a lunch pail style in order to be used by children after their fathers were finished with the tobacco.



283



284



285



286



287



288



290



292

288. **Mi Lola Cigar Reverse Painted Glass Sign.** Milwaukee: Mi Lola Cigar Company, ca. 1900s. An chromolithograph of a woman in profile, surrounded by striking gilt metallic lettering on a dark green background. Housed in original tin and wooden frame, 23 x 17". Very good.

500/1,000

289. **Rainier Bottled Beverages Reverse Painted Glass Sign.** Seattle: Rainier Brewing Company, ca. 1920s. A polychrome painted circular glass sign advertising for the "Vigor Strength" beer and housed in a crimped tin frame backed with contemporary wood sheets. Diameter 18". Old adhesive staining to edges, oxidation to interior affecting paint, scattered peeling and cracking.

400/600

290. **Edgeworth Smoking Tobacco Advertisement Cards. 3 pcs.** American, ca. 1920s. Group of colorful lithograph images on heavy cardstock advertising a "man's" tobacco. 3 1/2 x 6". Light soiling and creasing to edges.

50/100

291. **Sweet Caporal Standard Cigarettes Die Cut Advertisement.** New York: Kinney Bros., ca. 1890s. Die cut lithograph features an early American infantry soldier advertising the famous American cigarette brand. Framed, sight height 14". Light foxing and soiling to leg area. Good.

100/150

Standard Cigarettes is credited with producing the Sweet Caporal T-series baseball cards which included the 1910 T206 Honus Wagner baseball card. It is described by the National Baseball Hall of Fame as the sport's "most famous collectible."

292. **Evans Figural Cigar Store Indian Counter Lighter.** Evans Case Co., ca. 1930s. Cast metal Native American figure with gold aerosol paint finish, holding a bundle of cigars with text around the base "Cigars & Tobacco." Height 8". Missing lighter top, paint chipping to base.

100/200



291



293

293. **Fastidio Havana Cigars Proof Print.** New York City: George Schlegel, ca. 1900s. A portrait litho on cardstock of W.K. Vanderbilt II, grandson of Cornelius, advertising the cigar brand. Matted, sight 26 x 20". Inpainting to lip area, else very good.

400/600

294. **General Arthur Opera Cigar Advertising.** New York: Kerbs Wertheim Schiffer Co., ca. 1910. Lithographed package label depicting Arthur MacArthur Jr. Framed, overall size 12 x 21". Few scuffs to edges; very good. Uncommon.

150/250

295. **Fatima Turkish Cigarette Advertisements. 2 pcs.** Richmond, VA: Liggett & Myers Tobacco Co. Includes a die-cut heavy cardstock advertisement in the shape of a pack of cigarettes featuring the Fatima brand and a matchbook holder with matching graphics (made in Austria). Few bumped corners to card, else very good.

50/100

296. **Group of Early Wooden Cigar Boxes. 5 pcs.** Brands include Covered Wagon, Chicago Club (G. Bluthardt & Co.), Our Star, Sir Jonathan (McConnell Segar Co.), and William Hooper. Average 8 x 5 x 3". General wear to extremities; overall good with bright and clean interior graphics.

200/300

297. **Women Themed Cigar Boxes. 5 pcs.** Labels include Brown Beauties, Edela, Fancy Shape, Art Club and Mi Lola. Largest 8 x 5 1/2 x 4 1/2". Scattered soiling to labels; overall good. Must be seen.

150/250

298. **Our Union Cigar Box.** Brooklyn: The Moehle Litho Co., ca. 1905. Wooden box with inner and end cigar labels featuring the Union being celebrated by Uncle Sam with his American and Cuban soldier friends during the Spanish American War of 1898. 7 x 5 x 3 1/2". Lid bowed; graphics are bright with minor soiling and rubbing. Rare.

400/600



264



295



296



297



298



299



300



301



302



304



303



305

299. **Wilson & McCallay Tobacco "Come Sit Here" Premium.** New York: Knapp Co. Lith., 1894. A merry group of barroom hero's sitting around drinking and playing music. This picture was part of a giveaway; 25 tags from Plug Tobacco brands gets a various picture premium such as this one. Matted, 19 x 25". Near fine.

50/100

300. **Pair of Cheroots Cigar Store Display Boxes.** Circa 1900s. Wooden boxes with frontal flaps include advertising for Old Virginia Cheroots (P. Whitlock) and Cut and Slash Cheroots (Lyon). 12 x 7 x 5". Splits to wood, chipping and soiling to exterior labels; interior labels mostly intact.

100/200

301. **Pair of Lead Mine Cigar Boxes.** Galena, Illinois: George C. Biesmann, ca. 1880s. Wooden boxes with bright end and inner cigar labels featuring a wilderness scene with a steamship in the background and a man gathering water in the foreground. Minor soiling to one label; overall very good. Scarce.

200/300

302. **Group of Square Corner Tobacco Tins. 3 pcs.** Circa 1930s. Includes a lunch pail style tin advertising George Washington cut plug tobacco (R.J. Reynolds Tobacco Co.), Dixie chop cut plug smoking tobacco (Allen & Ginter's) and a Honeycomb Class tobacco tin. Largest 7 x 3 x 5". Few abrasions to graphics, original chrome luster remains.

100/200

303. **Group of Tobacco Canisters and Packaging. 4 pcs.** Circa 1930s. Tin lithos include advertising for Chief Fine Cut Cigarette Tobacco (Fletcher, Humphreys & Co.), The Puritan Cut Plug (D. Ritchie & Co.), and Pioneer Extra Fine Smoking Tobacco (Eagle Tobacco Co.). Also included is an unopened package of Sweet Burley Light fine cut (Spaulding & Merrick). Tallest 3". Scattered abrasions and nicks to paint; some original chrome luster remains with bright graphics.

100/200

304. **Group of Wooden Cigar Boxes. 3 pcs.** Labels include Club Friends, Bank Note, and Pete Dailey. Largest 9 x 6 x 1 1/2". Wear to extremities, interior labels bright and clean. Good.

100/200

305. **Railroad Themed Cigar Boxes. 2 pcs.** Includes wooden boxes advertising Horse Shoe Curve Crooks and Railroad Special Havana's. Largest 9 x 6 x 2", smallest 5 1/2 x 4 x 2". Railroad Special lid slightly bowed; bright graphics.

100/200



306



307



308

306. **H-O Cut Plug Canister.** Richmond, VA: R.A. Patterson Tobacco Co., ca. late 19th century. A soldered strap handle and lid pull one-pound tin with red paper label. Height 9". Modern soldering to lid and handle with dents, scattered soiling to label, age consistent oxidation. Good.

100/200

307. **American Duplex Co. Electric Coffee Pot-Shaped Grinder.** Louisville, KY, ca. 1930s/40s. Large industrial coffee mill, unrestored, with coarseness dial. Includes removable pitcher. 27 x 20 1/2 x 17".

300/600

308. **Pair of McLaughlin's Coffee Canisters.** Chicago: W. F. McLaughlin & Co., ca. 1906. Both tin examples, the first advertising "Bankers Mocha and Java" with an alligator skin graphics; the other advertising "Arabian Mocha and Java" with paper label. Tallest 6". Age consistent rust and spotting overall.

100/200



309



310

309. **Runkel's Chocolate Canister.** NY: Runkel Brothers, ca. 1920s. Five-pound square screw top "Pure Powdered Essence of Chocolate" tin. Height 8". Scattered oxidation to brim, few scuffs to graphics, lid does not attach to threads. Insides clean, graphics bright overall.

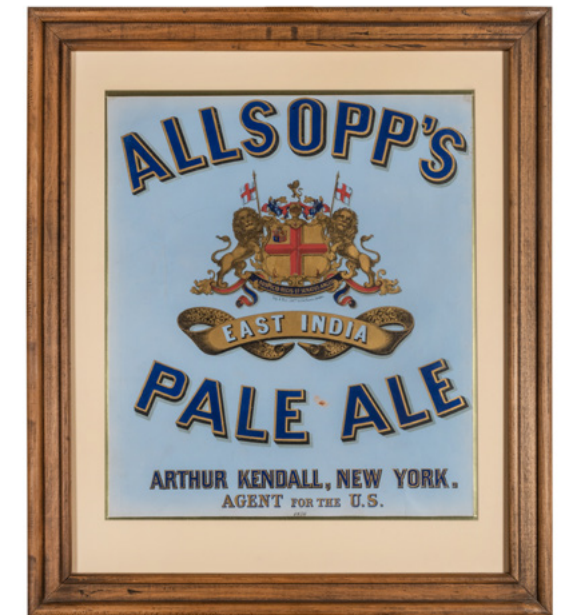
100/200

310. **Foil-Glo Metallic Design Advertising Book Matches Booklet.** Chicago: Match Corporation of America, 1948. Original pictorial yellow wrappers, saddle stitched. A salesman's booklet for match covers given to prospective businesses that want to advertise on them. 9 x 6". Corners bumped; original wax paper stuck to pages.

50/100

311. **Allsopp's Pale Ale.** London: Day & Son, ca. 1910s. A colorful lithograph with gilt lettering surrounding an English armorial, advertising the East India Pale Ale in the United States. Framed, overall 26 x 22". Scattered abrasions, some toning to borders.

200/300



311



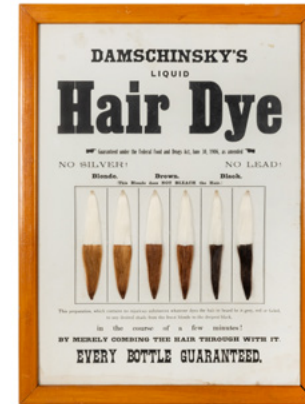
312



313



314



317



321



322

312. Anderson, Carl. **Henry Comic Strip Tobacco Cards. 44 pcs.** New York: King Features Syndicate, 1936. Cartoon images of a young bald boy who is a mute and communicates only through pantomime. Framed and matted in museum quality glass to an overall size of 30 x 10", cards measure 2 1/2 x 2". Overall very good.

50/100

Anderson's cartoons featuring Henry are credited with the first early positive depictions of African American characters during a time when they were racially stereotyped.



315

313. **Ayer's Sarsaparilla Proof Print.** Circa 1910. A colorful lithograph depicting a woman dropping a pill into her mouth. Matted, sight 20 x 15". Corner creasing, some spotting. Very good.

200/300

314. **North Pole Party.** Akron: Saalfield Publishing Company, 1909. A "pin the flag to the pole" paper gameboard with uncut flag pieces. Closest blindfolded participant to pin the USA flag to the North Pole wins a prize; furthest away wins a "booby prize." Matted, sign 27 x 17". Center fold visible as issued; near fine.

300/500

315. **Cooper Underwear Standee Advertisement.** Buffalo/Chicago: Niagara Litho. Co., 1915. Lithographed window card on heavy cardstock featuring "Cooper's Kenosha-Klosed-Krotch Union Suits." 24 x 18". Cardboard easel back glued to verso, general dampstaining, corners and parts of imaged rubbed.

100/200

316. **Cream of Pennsylvania Advertisement.** Cincinnati: V.E. Shields & Co., ca. 1920s. A glossy lithograph portrait on oval shaped cardstock featuring a woman holding a white dove. Length 10". Repaired closed tear, else good.

50/100



316



318

317. **Damschinsky's Liquid Hair Dye Advertisement.** New York: Carl Damschinsky, ca. 1906. Letterpress broadside featuring six different samples of dyed hair. Framed, 20 x 15 1/2". Dampstaining to lower edge, scattered foxing.

50/100

318. **Dr. P. Hall's Catarrh Remedy Medicine Advertisement.** Erie, PA: The Herald Litho Co., ca. 1900s. A blue and white litho on heavy card stock advertising for the medicine that cures mucus buildup. 9 1/2 x 14". Clipped corner margin, closed tears to edge, string strung through two holes in upper margin.

50/100

319. **Eagle Liqueur Distilleries Tip Tray Proof Print.** Cincinnati: Rheinstrom Bros., 1900s. A colorful print depicting a bartender pouring a glass of Angostura Bark bitters. Diameter 12". Minor smudging to margins; very good.

200/300



319



320

320. **Eremite Prince William Rye Whiskey Tip Tray Printer's Proof.** Milwaukee: Schuckmann & Seligmann Co., ca. 1900s. Colorful litho with gilt lettering surrounding three gentlemen sitting around drinking the whiskey. Diameter 13". Few smudges, else very good.

200/300

321. **Sigaren Maëstro. Cigar Advertising Poster.** Antwerp: Lithocart, ca. 1930s. Belgian lithograph advertising poster depicts a formally-dressed gentleman smoking a cigar. 47 1/2 x 32". Linen backed. Dampstain to lower left corner, minor abrasions and discolorations. B.

250/350

322. [The Goodrich Girls] **Aida.** Akron/New York: The B.F. Goodrich Company/The Gray Litho. Co., 1901. An elegant lithographed portrait of one of the Goodrich Girls bordered in metallic gold coloring. Signed by artist. Matted, sight 27 x 20". Scattered soiling to border, minor inpainting above right shoulder. A-. Unmounted.

300/500



323



326



324



325

323. [The Goodrich Girls] Beckwith, James Carroll (American, 1852–1917). **Beatrix**. Akron: The B.F. Goodrich Company, 1910. A lithographed seated portrait of Beatrix; the youngest daughter of B.F. Goodrich, the founder of the company. Beautifully framed and matted, overall 48 x 35". Few crease marks and inpainting to border. A.

400/600

324. [The Goodrich Girls] Blenner, Carole John (American, 1864–1952). **Sally**. Akron/Philadelphia: The B.F. Goodrich Company/Ketterlinus Litho. Co. A vibrant colored litho portrait of one of the Goodrich Girls. Handsomely framed and matted in a French-style, overall size 37 x 30". Age toned margins. A.

300/500

325. [The Goodrich Girls] Lynch, Albert (Peruvian, 1851–1912). **Gwendolen**. **Goodrich Clincher Automobile Tires**. Akron: The B.F. Goodrich Company, ca. 1905. A colorful lithograph poster featuring a portrait of one of the 17 Goodrich Girls, who is bordered by images of Goodrich tires and various brands. 36 x 29 1/2". Closed tears and few chips to margins, some age toning and occasional foxing. B+. Unmounted.

800/1,200

The Goodrich Girl series was given to customers as Christmas gifts in the form of advertisements, calendars, handbills, catalogs, postcards and other materials promoting the company's products.

326. King, Hamilton. **A Sozodont Girl**. New York: W.F. Powers, 1913. A beautifully colored litho of one of the Sozodont Girls advertising for the popular brand of oral hygiene products. Matted and mounted with conservation tape, sight 27 1/2 x 20". Light soiling and spotting to image, small tears with loss to border. Good.

200/300



327



328



329



330



331



332

327. **Lenthéric Cologne Window Card**. New York: Lenthéric Inc., ca. 1940s. A lithograph advertisement depicting a man skiing down a hill with text reading "For men of action/requisites by Lenthéric/quiet perfect grooming." Framed and matted, overall size 23 x 19". Scattered soiling and scuffs, tears and pinholes to lower margin.

100/150

328. **The McCormick for 1891**. Springfield, Ohio: Winters Print & Litho Co., 1891. A colorful printer's proof litho advertising the McCormick horse drawn agricultural harvesting machinery. Matted, sight 13 x 19". Minor ink smudging to upper image, else very good.

400/600

329. **Pabst Bock Beer**. [Milwaukee]: Premier-Pabst Sales Co., 1936. Lithographed advertisement depicting the special occasion bock style brew; bock is German for Billy thus the image of a Billy Goat is adopted and seen as the mascot for this poster. 36 x 23". Old adhesive marks to margins as issued, fold lines present. B+. Unmounted.

300/400

This little seen variant depicts the Pabst Brewery logo without the blue ribbon that is normally attached to it.

330. **Pabst Bock Beer**. [Milwaukee]: Premier-Pabst Sales Co., ca. 1930s. Small lithograph featuring the Pabst Billy Goat advertising for the Bock Beer. Framed, sight 14 x 10". Age-toned and soiled throughout.

50/100

331. **Parfum Mary Garden**. New York/Paris: Mishkin Studio/V. Rigaud, ca. 1920s. Lithographed window card featuring a full-bodied portrait of Mary Garden dressed in Cleopatra-like garb advertising for the women's French perfume product. Garden was a Scottish operatic soprano who was famous in France and America during the first third of the 20th century. Framed, sight 27 x 17". Isolated spotting to upper portion of image; small tear to border.

200/300

332. **The Western Cartridge Ammunition Poster**. East Alton, Illinois: The Western Cartridge Co., ca. 1921. A colorful scenery of a couple frog hunting, using 22 cal. Western Ammo. Matted, 29 x 20". Creasing to border, closed tears to lower edge, old adhesive to verso. A-.

600/800



333



335



336



337



341



342



343

339. **The Hindoo Charm.** Vitagraph Silent Movie Poster. New York: Standard Litho, 1913. Lithograph poster for the silent film directed by and starring Maurice Costello, with Clara Kimball Young, James Young, Helene Costello, Dolores Costello, and others. Series of three vignettes from the film, the last depicting the film's villain, the Indian fakir Nattoo. 78 x 31". Unrestored; folded, with numerous tape repairs to verso, tears, losses, and heavy creases. Rare; sold as is.

300/500

340. **Ph. de Noran.** Ph. De Noran and Datura. Brussels: Affiches Marci, ca. 1920. Color lithograph magic poster filled with vignettes from the performance of this European magician, including a levitation, billiard ball manipulation, and other illusions. 39 1/2 x 25 1/2". Two small holes at center; pale dampstains to lower edge, small tears and losses at edges. B. Unmounted.

250/350

341. **Life-Size Burlesque Poster.** American, ca. 1940s. Color tinted offset poster depicting a burlesque dancer. Mounted in a heavy vintage wooden frame, overall 65 1/2 x 45 1/2". Soiling and wear to image.

300/500

342. **Life-Size Burlesque Poster.** American, ca. 1940s. Color tinted offset poster depicting a burlesque dancer. Mounted in a heavy vintage wooden frame, overall 65 1/2 x 45 1/2". Heavy soiling and wear to bottom edge of print, abrasions and nicks across image.

250/350

343. **Life-Size Burlesque Poster.** "The Sizzling Comet." American, ca. 1940s. Color tinted offset poster depicting a burlesque dancer. Round nickname sign stapled to image. Mounted in a heavy wooden frame, 66 x 45 1/2" overall. Scattered soiling and wear.

300/500



339



340



334

333. **Western—Winchester Rabbit Hunting Poster.** 1955. USA, 1955. Original offset lithograph poster, designed by Weimer Pursell, depicting a rifleman taking aim at a jackrabbit. 40 x 26". Unmounted. Patch of small tears at lower right, old horizontal fold, slight wear to edges.

100/200

334. **W.S. Kimball Cigarette Advertising.** New York: The Major & Knapp Co., 1882. Colorful scenes of the wealthy from around the world, smoking Three Kings, Fragrant Vanity Fair, and New Vanity. Matted, sight 20 1/2 x 27". Slight inpainting to upper corner; very good.

400/600

335. **Opera Lights Cigarettes / Della Fox Die Cut Advertising Easel.** New York: National Cigarette & Tobacco, 1890s. Chromolithograph advertising display depicting Fox, the American actress and comedian, resting on a large rock. Original easel support detached but retained. Approx. 14 1/2 x 10". Minor creases.

300/500



338

336. **Favorite Cigarettes Advertising Lithograph in Original Frame.** Circa 1910s. Lithograph advertisement with portrait of a lady, in heavy original frame with carved "Favorite Cigarettes" lettering. 37 1/2 x 23 1/2" overall. Nicks and divots to frame and print, very good overall.

250/350

337. **Mogul Egyptian Cigarettes Advertising Sign.** Circa 1910s. Lithograph backed on original cardboard, depicting an Egyptian man in colorful robes and clutching jeweled swords to his chest while smoking an Anargyros Mogul cigarette. 14 x 10". Chipping and nicks in margins, small scrapes to image, slight retouching to image and edges.

250/350

338. **Big Ben Smoking Tobacco / Delaine Hours Advertising Poster.** [USA], ca. 1930s. Offset lithograph advertising poster depicting a tin canister of the tobacco, and the horse Delaine Hours, who was the 1937 Five-Gaited World's Grand Champion. 20 x 14". Minor edgewear. One of five versions of the advertisement, each featured a different American Saddlebred champion.

200/300



348



344



345

344. **Life-Size Burlesque Poster.** American, ca. 1940s. Color tinted offset poster depicting a burlesque dancer. Mounted in a heavy vintage wooden frame, overall 65 1/2 x 45 1/2". Soiling and wear to image.

300/500

345. **Trio of Burlesque Dancers Signed Photographs, with Programs.** 1950s. Three glossy photographs of burlesque dancers Georgia Sothern, Ann "Bang Bang" Sothern, and Viki Welles, each signed in pen. Each accompanied by a pictorial program featuring the dancers at the Empire Theatre (Newark, NJ). 8 x 10". Light creasing; very good overall.

100/200



347

346. **Lot of Six Pin-Up Magazines Featuring Bettie Page, Evelyn West, and Others.** 1950s. Includes issues of Stare, Meet the Girls, Vue, and Quick which feature Bettie Page; Artist's Photographer's Special featuring Evelyn West; and a catalog of sample pin-up advertising. Illustrated. Sizes vary; good to very good condition.

100/200

347. **Rawlings Advertisement Banner.** St. Louis. A black and yellow silk banner with gold trim featuring the name of the famous sporting equipment brand. 49 x 68". Fraying at fold marks; one open tear at upper fold, mild staining just above the "R".

100/200



346



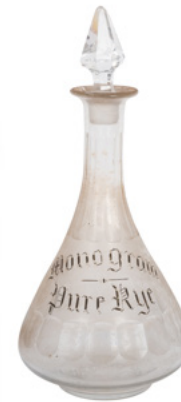
349

348. **Brunswick Bowling Contest Advertisement Banner.** The Brunswick-Balke Collender Co., 1940. An oversized linen banner advertising for the "Brunswick Red Crown Bowling Carnival" featuring a bowling contest with \$1,000 grand prizes. Original promotional tag attached. 36 x 120". Scattered foxing and offsetting to image. Good.

200/300

349. **Cook's Goldblume Beer Large Advertising Bottle.** Oversize amber bottle with original labels and cap which advertises the Evansville, Indiana brewery. Height 20".

200/300



350



351



352



353



354



355



356

350. **Monogram Pure Rye Back Bar Bottle.** Colorless glass decanter with etched and painted lettering. Crystal stopper. Height 12". Diam. 5 1/2".

100/200

351. **Sagamore Spring Whiskey Back Bar Bottle.** Colorless glass decanter with etched and painted lettering. Crystal stopper. Height 10 1/2" Diam. 4 1/2". Small hole with crack through lettering.

100/200

352. **Lot of Four Whiskey / Rye Back Bar Bottles.** Colorless glass decanters and bottles, three with stoppers, raised enameled lettering. Includes Pure Old Harper, Puritan, Old Hickory Whiskey, and City Club Pure Rye. Tallest 12".

150/250

353. **Drewry's Extra Dry Beer Mountie Advertising Figure.** Painted plaster display features a bottle at center, flanked by the South Bend, Ind. brewery's trademark horse and Mountie. Height 11". Small paint losses and scrapes.

100/150

354. **Musterschutz Terra Relief Plaque in Hammered Brass Frame.** Terra cotta tavern scene rendered in high relief, vividly colored, signed "JM Musterschutz" with number 5233. Overall diam. 24".

100/150

355. **Group of Beer Advertising Signs. 5pcs.** Circa 1950s/60s. Includes a plastic light-up SchlitZ sign depicting a man painting a decoy; metal countertop calendar with plastic Old Milwaukee logo and moveable calendar feature; and three metal Meister Brau Premium Beer calendars (1968). Lighted sign 26 x 11 x 4 1/2"; countertop calendar 17 x 11 x 2". SchlitZ sign light in working condition; plastic casing broken in several places and does not stay on securely. Calendar shows rust and wear. Overall good.

100/200

356. **Old Style Beer Advertisement Sign.** [Wisconsin]: Heilmann Brewing Company, ca. 1980s. A glass sign advertising the famous beer, Old Style, with a paper insert of a woman wearing a Blatz shirt. Framed, overall 30 x 22". Very good.

50/100



359



359



360



361



357

357. Louisiana Belle Rye Whisky Bar Mirror. New Orleans, ca. 1970s. Advertising mirror for 90 proof whiskey centered around a paddle steamer. Framed, overall 34 x 25". Very good. 50/100

358. Group of Early Kitchen Related Advertising. 3 pcs. Includes Johnson's Powdered Wax (S.C. Johnson) metal shaker, Sultana Spice Mills (A & P Spices) cloves metal shaker, and a Saratoga Belle (N.O. Vosburgh & Co.) glass flask with original label. Tallest 5 1/2". Overall good. 50/100

359. Pair of Chase & Sanborn Coffee Canisters. Boston/Montreal: Chase & Sanborn, ca. 1910. Tin examples, advertising "Seal Brand" and "Java & Mocha" on paper labels. Tallest 6". Oxidation to lids, scattered spotting and soiling to labels. Insides clean. Uncommon. 150/250

Described as the first coffee company to pack and ship roasted coffee in sealed tins.

360. Pair of Counter Display Ed. Pinaud Bottles. New York, ca. 1940s. Oversized hair tonic and after-shave lotion glass display bottles with original labels reading "Eau de Quinine" and "Lilas de France." Topped with Bakelite screw caps. Height 13". Few chips to labels; very good. 50/100

361. Pair of Edelweiss Beer Cardboard Advertising Fans. Chicago: P. Schoenhofen Brewing Co., ca. 1930. Color lithograph fans advertising the lager, bearing its famous slogan "a case of good judgment." 15 x 8". Slight rubbing to edges. Very good. 50/100



362

362. Cleveland Electric "Aztec" Neon Clock. Cleveland, OH, ca. 1930s. Electric clock. Working red and green neon; clock runs. 26" diam. 7" width. Very good. 1,000/2,000

363. International Time Recording Co. Time Clock. American, early 20th century. Oak case, glass front door, with working bell, punch card slot. Includes pendulum. 44 x 14 x 11". 300/500

364. Master Crafters Swinging Girl Electric Sessions Clock. USA, ca. 1950s. Electric clock in marbled plastic case, opening at bottom depicts a girl who swings as the clock is running. Light switch at side. Working. 50/100

365. Haddon "Home Sweet Home" Electric Clock. Chicago, ca. 1950s. Electric clock in the form of a house, a window in the front depicting a grandmother rocking back and forth in a chair in front of a fireplace. Working condition. Chips and cracks to clock face. 50/100

366. Victorinox Swiss Knife Mechanical Window Display. Vintage electric animated display with four blades that extend and retract from the body. Base advertises the "Original Swiss Army Knife." Height 23". One side panel detached but easily repaired. Working condition. 150/250



363



364



366



365



BLACK AMERICANA

PROPERTY FROM THE COLLECTION OF ALLEN LIFFMAN

The following section includes selections from the Allen Liffman Collection of Jim Crow-era racist black memorabilia, which stands among the most extensive collections of such objects assembled. This material serves as a powerful reminder of the notions and ideologies of race that prevailed during the period. Readers are advised that the section contains offensive images and language.



368

367. **Green River. The Whiskey Without Regrets.** Kentucky/New York: Oldetyme Distillers/Consolidated Lithographing Corp., 1935. Black Americana advertising lithograph on heavy cardstock featuring a man and his horse carrying Green River whiskey. 18 x 23". Few scuffs and creasing, toning and dampstaining to border.

150/250

368. **Le Savon Dirtoff.** [Paris], ca. 1930s. A French product advertising poster depicting an African American male washing his hands with Dirtoff, a soap made "for mechanics, drivers, and housewives." Elegantly framed, 41 x 29". Dampstaining to lower margin. B+.

400/600

369. **2 in 1 Shoe Polishes Advertisement.** New York/Hamilton: F.F. Dalley, ca. 1900s. A die cut advertisement featuring stereotypical caricatures that correspond with the various colored shoe polishes the brand offers. Framed, overall size 15 x 19". Scattered repairs and abrasions to image.

200/400

370. **Minstrel Show / Riverboat Gambling Stock Poster.** Newport, KY: Donaldson Litho, ca. 1930s. Color lithograph racially stereotypical stock poster showing two unwitting officers spying on a craps game held on a riverboat dock. The kingpin of the game is dressed in fine clothes and jewelry and holds a wad of cash, with a bottle of whiskey jutting from his coat pocket. 42 x 28". Crudely mounted to cardboard; losses, stains, and tears. Sold as is. C.

80/150

371. **African American Original Photograph.** Knoxville, TN: Knaffl and Bro., 1898. An early black Americana gelatin silver photograph backed with cardstock depicting a newborn being weighed. Framed, sight 16 x 20". Scattered foxing to image, publisher stamp has been blocked out by a white correction fluid, dampstaining to backing.

400/600



367



369



370



371



373



372

372. Andrus, Chas. H. **Kendall's Spavin Cure**. Enosburgh Falls, VT, ca. 1891. Black Americana lithograph bearing a racially stereotypical image of an African American riding a horse, promoting the liniment for horses and even human flesh. Framed, overall size 25 x 26". Significantly restored with inpainting to margins and parts of image, scattered foxing and light soiling. C.

400/600



380

378. **Black Americana Burned Wood Towel Rack**. New York: Flemish Art Co. A hand colored and carved depiction of a young boy eating a massive watermelon; metal bar attached for holding a hand towel. Stamped on verso with company trademark. Length 15". Wood chipped with minor loss to tail end of watermelon, else very good.

50/100



374

373. **Black Americana Advertising, 5 pcs.** Lot includes Undressed Black Kids glove boxes with inserts, golf tees (Philpot Brokerage Co.), Old Faithful straight razor in box (A.J. Jordan), and a box of Nemo "Makes Black Hands White." Overall very good.

150/250

374. **Black Americana Advertising Tin Boxes, 4 pcs.** Group includes lithographed tins by Sahara Dates (Rannou Marseilles), Diamond Match Company, Dawsonia Toffee, and Gold Block Fine Virginia Cut Plug. Largest 8 x 3 x 2". Scattered surface scratches throughout; graphics bright overall.

200/300



375

375. **DeLite Cocoa Spice Cabinet**. Philadelphia: DeLite Chocolate Co., ca. 1930s. Black painted tin with original black Americana label on inside advertising the tin as being given away for free in exchange for 15 cocoa coupons. Includes 7 of the 8 spices inside; lacking mace. 8 x 5 x 4". General oxidation overall, dampstaining and losses to labels.

50/100

376. [Black Americana] **American Beach Cast Iron Sign**. Florida, ca. 1930s. An "ocean playground" sign featuring a marlin and a woman in a bathing suit bookending the text. Length 11". Scattered oxidation; good.

100/200



376

377. [Black Americana] **Black Boy Air Rifle Slugs Tin**. London: Imperial Chemical Industries. Green and yellow lithographed graphics featuring a young African American boy; original slug shot still remains. Diameter 2 1/2". Small graphic smudge on the word "Eley," else very good.

100/200



377



378



379

379. **Black Americana Butler Cigarette Holder and Floor Lamp**. Circa 1930s. A double sided painted wood figural stand depicting an African American dressed as a butler; holds a wooden dish top with a glass ashtray and is wired along the edge to produce electricity for a light bulb. Original lampshade. "Black Maria" sticker to bottom of base. Height 38". Few nicks to base, else very good.

200/300

380. [Black Americana] **Carter's Ink Eraser**. The Carter Ink Co., ca. 1900s. Two glass bottles are housed inside the box case, with original instructions. Graphic depicts an African American boy sprinting across the box. 3 x 3 x 1". Graphics bright, interior clean and intact.

50/100

381. **Black Americana Cloth Print Advertisement**. American. Image of a young boy smoking a cigar and holding a watermelon while sitting on a barrel. Framed, overall size 25 x 21". Very good condition.

200/300



381

382. [Black Americana] **Electric Moveable Store Display**. A diecut lithograph attached to an electric motor that moves the man's eyes and mouth. Framed, overall size 22 x 18". Very good condition; works.

1,000/1,500

383. **Black Americana Motor Patches and French Chalk Tins, 2 pcs.** England: Chemico Works. Litho advertising tins with an African tribesman on the label. Tin measures 3 x 3 1/2 x 3/4". Scattered surface scratches.

200/300



382



383



384



385



386



387



388



389

384. **Black Americana Musical Needle Work.** Stitched text and sheet music advertisement on cloth. Framed, overall size 21 x 24". Minor soiling; very good.

200/300

385. [Black Americana]. **Pears' Soap Advertisement.** Harper's Weekly, ca. 1888. A nice impression with dark lines featuring a young boy cleaning his hands and a young girl carrying flowers. Framed, overall 15 x 13". Visible fold line; very good.

50/100

386. [Black Americana]. **Pears' Soap Advertisement.** New York: Sackett, Wilhelms, and Betzig, ca. 1900s. A colorful lithographed advertisement depicting young girls and boys bathing with Pears' Soap. Framed, overall size 13 x 11". Minor foxing to center image; very good.

50/100

387. **Black Americana Poker "Good Luck" Countertop Statue.** New York: B.A. Maxwell Moss, 1909. A painted plaster statue depicting a racially stereotypical African American seated on a box with text partially reading "For Shuffle Luck." Height 19". Very good condition.

400/600

388. **Black Americana Polish Wax Tins. 2 pcs.** New York/Australia: Piccaninny Co./Graham Products Laboratories. Lithographed advertising tin featuring "Piccaninny Prepared Wax Polishes" and "African American Head Stove Polish." Largest diameter 4". Light surface scratches to lids; some original luster still remains.

200/300

389. **Black Americana Product Advertisement. 11 pcs.** Lot includes Armour's Pork and Beans hand fan, Black Boy Hob Nails, Black Boy Cricket & Golf Spikes, Piccaninny Shoe Polish tin, stick of Goudey's Pick-A-Ninny chewing gum, Kiwi Boot Polish tin, Jiffy Dye (Drummer Dyes), White Sewing Machine paper insert, tin of menthol pellets, a box of licorice cigarettes, and a box of steel wool soap pads.

150/250



390



391

390. **Black Americana Shoe Polish Tins. 5 pcs.** Lot includes Alexander's Shoe Polish, Alexander's Supreme Brown Shoe Polish, Piccaninny "Twice the Shine in Half the Time," Shu-Tone Brown Stain, and Magik Boot Polish. Generally 3". Minor surface scratches and oxidation to graphics; overall good.

400/600

391. [Black Americana] **Sun Paste Stove Polish Advertisement.** New York: Morse Brothers/Donaldson Brothers, 1894. Product advertisement litho on cardstock depicting a knight in shining armor; once rusty, now clean. Framed, sight 12 x 9". Corners bumped, few tears with losses around border.

200/300



392

392. **Black Americana Wooden Crate Labels.** Aughinbaugh Canning Co./ W.S. Kimball & Co. Wooden shipping crate ends featuring depictions of African Americans. One is stamped with a man smoking a pipe; most likely from a tobacco crate, and the other is a colorful paper label attached to wood depicting a man eating sliced sauerkraut. Framed, largest 15 x 9". Tears to paper label. Good.

200/400



393

393. **Case Moody Pies Original Artwork.** Colored pencil and an oil-based paint on rice paper racially depicting a blackface character sitting on a watermelon eating a slice of pie. Framed, overall size 8 x 21". Trifle foxing. Very good condition.

100/200



394

394. Dean, J.R. **Corbin Locks Black Americana Advertisement.** American, ca. 1902. Lithographed image of three African American men trying to break into a chicken coop. Framed, sight 15 x 18". Scattered inpainting to lower corners; very good.

200/400



395

395. **Early Black Americana Photograph Prints. 3 pcs.** Knoxville, TN: McCrary & Branson, 1897/1898. A photo litho print depicting a racially stereotypical scene of African Americans while advertising for various brands such as "Runnymede Club" liquor by R.F. Blake. Framed, overall size 9 x 21". Very good condition.

200/300



397



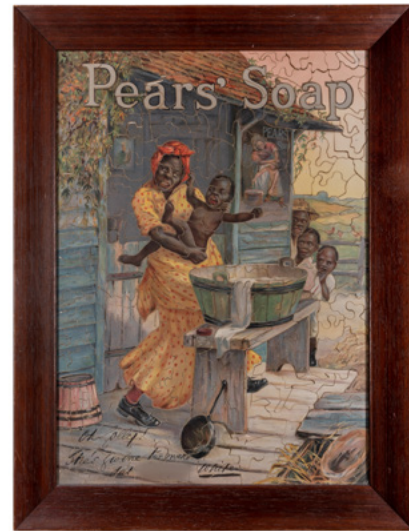
400



396



398



399

396. **Five Miles to Wood Street Garage.** New York: Ithaca Sign Works. Colorfully painted vintage tin mileage sign depicting black Americana mounted on wood with screws to corners and mid-section. 48 x 12". Scattered scuffs and discoloration; some oxidation to edges and verso.

400/600

397. **National Accident Society.** New York: Currier & Ives, 1884. A lithograph insurance advertisement depicting an African American riding a donkey down the middle of the road while the other men on horse and buggies, to their surprise, crash into the ditch. Framed and matted, overall 25 x 31". Minor creasing and inpainting to center image; very good example.

600/800

398. **National Licorice Company Black Americana Advertising.** Melbourne, Australia: National Licorice Co., ca. 1902. A separated paper bag with a lithographed advertisement depicting a brand of licorice. Framed, overall size 13 x 27". Scattered creasing, light dampstaining.

200/300

National Licorice Co. went on to establish the Twizzler brand and later become acquired by Hershey Foods.

399. **Pears' Soap Black Americana Advertisement Puzzle.** Circa 1890s. A young boy screams as his mother tries to bathe him with Pears' Soap while his three older siblings joyously watch. Framed, sight 16 x 12". Graphics bright and clean; very good condition. Scarce.

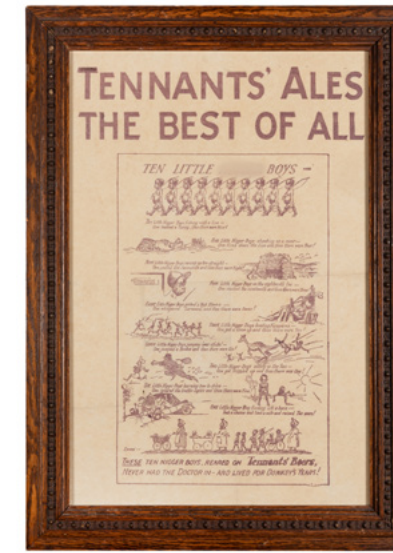
600/900

400. **Rumsey's Blackville Fire Brigade Hook & Ladder Trucks Advertisement.** New York: Crump Label Co./Eugene A. Rumsey, ca. 1980s. A vibrantly tinted chromolithograph depicting a firefighting scene, men and women relentlessly trying to put out a structure fire at the "Hotel d'Afrique" while simultaneously advertising for Hook & Ladder Trucks, the manufacturers of pumps and hand fire engines. 18 x 26". Inpainting to closed tears around margins, some affecting image; tanned borders with cello tape to few edges; scattered foxing to verso with conservation tape repairs to various tears and small holes. Good. Scarce example.

800/1,200



401



402



403

401. **United States Fur Co. Ship Us Your Furs.** St. Louis: United States Fur Co., ca. 1920. A black Americana lithographic advertising poster depicting a skunk sneaking up on the unsuspecting hunters. Framed and matted, overall size 24 x 18". Few closed tears to border. A-

300/400

402. **Tennants' Ales the Best of All.** South Yorkshire: Tennant Brothers, ca. 1880s. An illustrated advertisement for an English brewery featuring an American children's counting out rhyme and depicting African American children, by Frank Green. Framed, overall size 24 x 17". Old folds visible. A.

200/300

403. **Young Boy Eating Watermelon Advertisement.** M.F. Tobin, 1903. Black Americana lithographed country store advertisement. Framed, overall size 20 x 16". A.

300/400

404. [Black Americana] **African American Distler Dandy Tin Windup Toy.** Germany: Distler, ca. 1915. A colorful tin litho clockwork toy depicting a dandy that dances when wound. Height 7". Surface chipping to metallic paint. Working.

200/300

405. **Black Americana Animated Alarm Clocks. 2 pcs.** German. Nickel plated alarm clocks with paper inserts of young African American boys whose eyes and arms move in tandem with each second. Tallest 6 1/2". Minor surface oxidation; very good condition.

200/400

406. [Black Americana] **Aunt Jemima Wind-Up Toy.** Japanese. Painted celluloid toy depicting an Aunt Jemima figure holding a stack of pancakes; wheels move when wound. With key. Height 4". Minor discoloration to paint. Working.

200/300



404



406



405



407



408



417



412

413



409



410



411



414



415



416

407. [Black Americana] **Aunt Louisa's Cube Puzzles.** New York: McLoughlin Bros. Publishers, ca. 1880s. Complete. Thirty wood puzzle blocks with paper label graphics on each of the six sides forming six different puzzle images from the "Ethiopian Minstrels". Housed in a wooden box with original label lid and five lithographed prints that depict the images that are on the puzzle pieces. Box measures 11 1/2 x 10 x 2 1/2". Tears with losses to prints and blocks; soiling and dampstaining throughout, box missing two sides of top wooden framing.

800/1,200

408. [Black Americana] **Baby Rack Shooting Game.** Dayton, OH: The Brinkman Engineering Co., ca. 1920s. A tin shooting gallery featuring seven targets with a point system; the painted steel cannon is loaded with a metal ball and then pulled back to activate the spring mechanism that projects the ball forward towards the target, the ball is then dropped into the gutter and rolled back to the user. Four balls total. Length 14 1/2". Minor surface chips to the alley; targets are near fine.

200/400

409. **Black Americana Bagatelle Game.** Brooklyn, NY: Gropper, ca. 1920s. A colorful spring-loaded pinball game with black Americana lithographed images and wooden frame. 23 x 15". Minor dust soiling to graphics. Works.

200/300

410. [Black Americana] **Bean-Em. Bean Bag Game.** Churchville, NY: All-Fair, 1931. A boxed toss game featuring three die-cut cardboard targets featuring racially stereotypical African American's. Object of the game is to throw bags through the holes, first to 100 points wins. Instructions on verso of box lid. 19 x 10 1/2 x 2". Rubbing to extremities, missing 2 of 3 bean bags; very clean interior.

100/200

411. **Black Americana Bobblehead Dolls. 2 pcs.** Germany, ca. 1920s. Early hand painted bobbleheads with paper mâché heads on spring loaded wooden dowels that are attached to the neck of the body depicting two young African American boys. Largest 8", smallest 5 1/2". Soiling to painted body, paint cracking to mouth, else very good.

600/800

412. **Black Americana Bobblehead Dolls. 2 pcs.** Hand painted chalkware bobbleheads of two African American male figures, one in patriotic attire and the other topped with a miniature hat. Height 6". Spring no longer works in the patriotic figure, some soiling to paint.

200/300

413. **Black Americana Bobblehead Novelty Dolls. 2 pcs.** Hand painted chalkware and plaster of two racially stereotypical African tribesman with spring action head motion. Largest height 8 1/2". Near fine.

100/200

414. [Black Americana] **Celluloid Wind-Up Toys. 3 pcs.** Japan. Group includes a young boy eating a watermelon, a bellhop, and a boy being stung by a bee (missing key). Height 5". Overall good.

100/200

415. [Black Americana] **Chad Valley Shooting Game.** England: Chad Valley Games, ca. 1930s. Complete with ten wooden figures depicting African American caricatures sitting or standing in front of the "Ole Nest." Included with a pressed steel rubber band gun to knock over the targets. Height 13". Targets slightly sunned, else very good condition.

200/300

416. [Black Americana] **Chuck Target Game.** NY: J. Ottoman Lithographing Co., ca. 1900s. A lithographed image of a man with an open mouth holding a watermelon on heavy cardstock. One is diecut, the other is part of the front lid of the box that the game was housed in. Object of the game was to "chuck" disks into the open mouth. Framed, sight 17 x 7". Sold for display purposes.

150/250

417. **Black Americana Cloth and Nut Head Dolls. 5 pcs.** Early 20th century. Group of African American folk art cloth dolls made with painted walnuts for heads, wire skeletons, and clothes made from various fabrics. These figures include an elderly man with beard holding a bushel full of cotton and a cane, a well-dressed woman with handbag and feather in her hat, a young man singing and playing the banjo, a young boy picking cotton, and a young girl clutching her doll. Tallest 10". Uncommonly very good condition.

200/300



419



420



421



418



422



423



424



425



426



427



429



428

418. **Black Americana Dandy Dexterity Puzzles. 10 pcs.** German. Group of vibrant paper playing fields featuring images of well-dressed African American men. Largest diameter 2 1/2", smallest 1". Overall good.

400/600

419. [Black Americana] **The Darktown Fancy Ball Picture Puzzle.** Salem, MA: Parker Brothers, 1894. Complete. A vibrant colored cardboard jigsaw puzzle depicting a celebration, with original box and graphics. Box measures 9 1/2 x 8 x 1 1/2". Wear to extremities, some soiling to puzzle pieces; row 1, column 2, piece 1 partially torn.

300/400

420. [Black Americana] **The Darktown Fire Brigade Picture Puzzle.** Salem, MA: Parker Brothers, 1894. Complete. A scene of a man rushing to put out a house fire. 9 1/2 x 8 x 1 1/2". Minor soiling and rubbing to box; interior pieces in fine condition.

300/400

421. **Black Americana Dexterity Puzzles. 4 pcs.** Circa 1900s. Embossed tin lithos, one wood playing field, depicting images of African American women. Largest 5" diameter, smallest diameter 1". Missing paper backs; clean interiors. Good.

150/250

422. **Black Americana Dexterity Puzzles. 4 pcs.** Germany, ca. 1900s. Colorful tin playing fields with five holes where the five balls must go. Each with original paper label verso advertising for Frear Summer Goods, Peter Schoeller, The Lexington "Shoes That Satisfy," and Anderson's Concentrated Soups. Diameter 1 3/4". Minor denting to rim of tin casing, surface wear to paper labels; good overall.

200/300

423. **Black Americana Dexterity Puzzles. 2 pcs.** German, ca. 1900s. Vibrant embossed images of a wealthy African American couple on glossy cardstock housed in a tin casing. Diameter 2 1/2". Very good.

150/250

424. **Black Americana Diecast Jazz Band. 14 pcs.** British. Boxed set of painted figures dressed in red jackets and white pants, playing various instruments while seated. Half-size duplicates included. Largest 2", smallest 1". Few paint chips and soiling to white paint, else good.

200/300

425. [Black Americana] **Distler Jigger Hand Crank Penny Toy.** Germany: Distler, ca. 1930s. A tin litho crank operated toy with reverse opposite facial features; one side is dark skinned and the other is light. Height 3 1/2". Minor scuffs to base; very good. Working.

200/300

426. **Black Americana Door-Bell Ball Toss Game.** Circa 1930s. Heavy cardstock with revolving door that is attached with small bell on verso and rings every time the ball hits the door. 12 x 11". Finger smudging to verso, scuffs to image. Good.

50/100

427. [Black Americana] **Early McLoughlin Brothers Chopped Up "Puzzles to Put Together."** New York: McLoughlin Brothers Publishers, ca. 1874. Complete. Twenty-four paper covered cardboard picture puzzle pieces and a wooden box with a chromolithographed paper label depicting a "Grand Musical Party" featuring caricatures of African Americans dancing, playing music, and one dressed in Uncle Sam attire. Box measures 10 1/2 x 9 x 2". Extremities of box rubbed, one facsimile puzzle piece (R:1, C:1, P:4); vibrant graphics. Scarce.

500/700

428. **Black Americana Electronic Minstrel Jigger Automaton.** Adrian. Two wooden African American dancers with articulated limbs, dance on stage by way of a built-in electronic mechanism that the dancers are hooked to. Height 22". Some wear to wood on stage; very good condition. Working.

800/1,200

429. [Black Americana] **Figural Cast Iron Toy Cap Guns. 3 pcs.** Plymouth, Connecticut: Ives Manufacturing Company, ca. 1887. Embossed grip and features depicting the head of an African American with his mouth open where the cap would be placed. Average length 4". Minor oxidation around hammer; Working.

400/600



430



432



431



433



434

430. [Black Americana] **Figural Shooting Game.** 19th century. An early wooden shooting game with stand attached with a paper label featuring the face of an African American man; the eyes and mouth are attached to metal chains and sit loosely atop eye screws so that they can easily be knocked off by a flying projectile. Height 13". Dampstaining and soiling to image; few surface scratches to wood. Good.

400/600

431. [Black Americana] **Folk Art Dual Wooden Jiggers.** Hand painted dancers with moving arms and jointed knees that swing simultaneously when metal wire is moved. Figure height 11". Minor fading to paint; very good.

200/300

432. [Black Americana] **Folk Art Minstrel Jigger Show.** A hand painted wooden and glass display case depicting a log cabin with a red felt musical stage inside that features six hand painted African American wooden dancers standing side by side and move up-and-down in tandem when the wooden mechanism inside is hand cranked. 12 x 15 1/2 x 7". Surface wear to extremities, some felt missing from stage; dancers paint vibrant and near fine. Working.

800/1,200

433. [Black Americana] **Game of Dr. Busby.** 4 pcs. New York/Massachusetts, ca. 1905. Lot includes variations of the original game including the original *Dr. Busby* (Milton Bradley), *The Good Old Game of Dr. Busby* (United Game Co.), and *Dr. Busby the St. Nicholas Series* (J. Ottman). Sizes vary. Box lids rubbed and worn; interiors clean.

100/200

434. [Black Americana] **Game of Snap.** 4 pcs. Group includes various Snap games with images of two clowns snapping a ribbon, an alligator sneaking up behind a young boy, two mice finding a way to get the cheese from a mouse trap, and other miscellaneous snap. Sizes vary. Overall good condition.

150/250



435



436

435. [Black Americana] **Game of Snap.** 4 pcs. Group includes various Snap games with images of a man falling through a bridge, an alligator sneaking up behind young children, and other miscellaneous snap games including the *Punch and Judy Series*. Sizes vary. Overall good condition.

150/250

436. [Black Americana] **German Tin String Toys.** 4 pcs. Possibly Distler, ca. 1910s. A group of minstrel players and dandies that move in various way when attached string is pulled; a man eats a melon, another reads his sheet music, and the others pull their top hats off with one changing faces into a clown. Tallest 6", smallest 3 1/2". Two strings missing; moving mechanism works.

400/600



437

437. [Black Americana] **German Happy Jack Tin Minstrel Dancing Toys.** 3 pcs. Tin lithos depicting African Americans in colorful jackets and plaid pants dancing on a small stage; one dancing on a big marching band drum titled "Charleston Dancer." Crank operated. Tallest 9", shortest 6 1/2". Some rust spotting to base and edges of dancers. Working.

400/600

438. [Black Americana] **Happy Joe Tin Minstrel Dancing Penny Toy.** Germany: KW. Tin lithographed dancer depicting an African American in colorful clothing. Crank operated. Height 3 1/2". Some spotting to paint and base verso, else very good.

400/600



438

439. **Black Americana Hand Crank Children's Music Boxes.** Switzerland. Tin circular boxes with paper labels depicting various racially stereotypical scenes of African Americans. Few with paper labels featuring maker (Thoren's) and title of the song that is played. Cranks include plastic, ceramic, metal, and wood knobs. Largest diameter 3". Verso labels with descriptions show signs of soiling and surface tears. Working.

200/300



439

440. **Black Americana Large Dexterity Puzzles.** 4 pcs. Germany, ca. 1900s. Group featuring tin and paper playfields with bust images of African American women, men, and a pair of infants bathing. Diameter 2 1/2". Minor denting to rim of casings, else very good.

200/300



440



441



442



443



444



445



446



447

441. [Black Americana] **Mettoy Tinplate Windup Clown Motorcycle.** England: Mettoy, ca. 1930s. A brightly colored tin litho motorcycle driven by a clown. Length 5 ½". Very minor nicks to paint; Working.

50/100

442. **Black Americana Miniature Dexterity Puzzles. 7 pcs.** German. Various paper playing fields house in tin casings with images of African American men and women. Diameter 1 ¼". Overall good.

100/200

443. **Black Americana Miniature Lead Figures. 8 pcs.** German. Included are several alligators with children themed pieces, a large anaconda eating a small child, a couple of boys sitting around a campfire while their friends getting taken away by alligators, and a boy on a donkey (head detaches). Generally 2 to 3" in length and height. Very good overall.

150/250

444. **Black Americana Minstrel Animated Mantel Clock.** German: Junghans, ca. 1920s. A cast iron polychrome African American minstrel player perched on top of the clock that is housed in wood and tin. When wound, his eyes move to the side and back forward with each second. Height 9 ½". Some wear to the clock's tin housing, key missing, else very good. Working.

600/800

445. [Black Americana] **Minstrel Sam Magnetized Toy.** Fulton, IL: Patent Novelty Co., ca. 1920s. "The sliding, gliding, wiggling, wriggling toy" is a seafoam green painted metal disk with a paper label depicting Minstrel Sam and a die-cut metal horn that moves up-and-down when the toy is spun causing the internal magnetic mechanism to shake thus moving the instrument. With original packaging box. Diameter 4". Few closed tears to box, else very good. Uncommon.

150/250

446. [Black Americana] **Minstrel Dancing Tin Wind-Up Toy.** German: Possibly Distler, ca. 1930s. A tin litho depicting an African American dancer wearing cloth clothing and holding a metal cane; when wound the dancer moves sideways at the waistline. Height 7 ½". Shirt is slightly torn near key mechanism, pants slightly soiled, surfaced scratches to facial area. Working.

200/300

447. [Black Americana] **Minstrel Tin Wind-Up Toy.** German: Distler, ca. 1930s. A tin litho depicting an African American man playing the accordion; legs move when wound. With original stand and key. Height 8". Minor scuffs to paint; very good. Scarce.

800/1,200



448



449

448. **Black Americana Novelty Figures in Watermelons and Nut Shells. 6 pcs.** Bulk made in Japan. Bisque and celluloid figures of African American infants housed in cardboard shells depicting large peanuts and small hand painted watermelons with facial features; included is a real walnut housing a tiny bisque figure with frontal latch and wire hinge. Largest length 6", smallest length 2". Overall very good.

200/300

449. **Black Americana Painted Celluloid Figures. 4 pcs.** Japan. Group includes a young African American boy, a dandy character, a waiter, and an infant standing on a roly poly watermelon; two with moveable arms. Tallest 5". Overall very good.

50/100



450

450. [Black Americana] **Pair of Early McLoughlin Brothers Chopped Up "Puzzles to Put Together."** New York: McLoughlin Bros. Publishers, ca. 1874. Complete. Paper covered cardboard picture puzzle pieces depicting a comedic image of an African American Hamlet holding Yorick's skull but appears to be zoomorphic in nature, and the other is of an image depicting the backstage after a minstrel show. Largest 10 ½ x 9". Minor surface scuffs and soiling. Very good.

600/800

451. [Black Americana] **Pair of Folk Art Hanging Cloth Dolls.** Young children's clothes turned into two African American hillbilly style dolls; limbs are attached to clothes by mother of pearl and bone buttons, head is attached to clothes hanger in which the entire unit is hung on. Height 28". Clothes slightly soiled and dampstained. Good.

600/800



451

452. [Black Americana] **Pair of Sand Motion Toys. 2 pcs.** [French?], mid-19th century. Possibly made by Gerard Camagini in France. Includes a young boy playing the violin and a couple dancing in vibrant clothing. Unmarked verso. Largest 8 x 6 x 2 ½". Extremities worn; interior clean with vivid colors. Working.

300/400



452

453. [Black Americana] **Trio of Sand Minstrel Motion Toys.** France: Gerard Camagni, mid-19th century. Sand-activated automata depicting three minstrel shows, with moving string-player musicians, dancers, and excited dogs; the boxes wind by rotating clockwise. One housed in wood with original paper label to verso. 9 ½ x 7 ½ x 2 ½". Some lace trim missing, else clean and sound. Working.

600/800



453



454



455



456



460



462



464



457

454. [Black Americana] **Pair of Tin African American Squeeze Toys.** German: D.R.G.M. Tin litho figures, one is a saxophone player with cymbals on his ankles, the other is a man in metallic paint with a bouquet of flowers in hand. A metal wire is squeezed on the back, making the limbs move vertically. Height 7". Lacking wire to back of man holding flowers.

200/300

455. [Black Americana] **Pair of Celluloid Whirligig Carousel Tin Wind-Up Toys.** Japan. Colorfully painted celluloid figures depicting African American children standing atop of a tin vehicle with a celluloid carousel situated above them; when wound, the vehicle moves forward and the carousel spins. Tallest 6". Some paint fading to figure, else very good. Working.

100/200

456. **Black Americana Paper Dexterity Puzzles. 2 pcs.** Japan. Colorful paper stock images of racially stereotypical indigenous African tribal people. Largest diameter 2 1/2". Slightly tanned.

50/100

457. **Black Americana Puzzles and Toys. 4 pcs.** Group includes the acrobatic toy *Cecile*, *The Black Peter Game*, *Tongu the Terror* animated toy on original packaging, and a dexterity puzzle. Overall very good.

150/250

458. [Black Americana] **Shufflin' Sam and Black Boy Mechanical Tin Toys.** Bridgeport, CT: The Lindstrom Tool & Toy Co. Tin litho mechanical dancers; base is turned to crank mechanism to activate dancer's moving legs. Largest height 7 1/2". Soiling to paint, some oxidation to unpainted interior sides of arms, few surface scratches. Both working.

200/300

459. **Black Americana Soap Advertising Dexterity Puzzles. 3 pcs.** Circa 1900s. Embossed images advertising for Star Soap and Diamond "C" Soap; tin and paper stock playing fields housed in tin casing. One original Star Soap (Zanesville, Ohio) paper label to verso. Diameter 2". Minor oxidation to casings, slight soiling to interior. Good.

150/250



459



461



463



465

460. [Black Americana] **Somsteba Jigger.** New York: Louis Marx & Co., ca. 1920s. Tin litho wind-up toy featuring an African American dancer with articulated arms and legs standing on a stage platform. Height 8". Occasional wear to graphics, few scratches. Working.

200/300

461. [Black Americana] **Ten Little N**** Boys Tin Puzzle.** Tinplate Decorating Co., ca. 1885. An orange lithographed tin with ten dancing boys on lid. Interior features ten tin playing pieces with names of each of the children on them; object is to get eight of them into the inner circle to their corresponding spots with one finger, two will not make it in. Instruction label on verso of lid. Some spotting to label; graphics and puzzle pieces clean. Very good. Scarce.

200/300

462. [Black Americana] **Tin Dancing Jigger Windup.** USA: B&W, ca. 1920s. A tin litho rustic shed platform with a scene of a plantation in the background is used to hold two tin African American boys that dance when mechanism is wound. Painted wood foundation. Height 10". Scattered scuffs and abrasions to surface, minor oxidation to base. Working.

600/800

463. [Black Americana] **Tin Minstrel Wind-Up Musical Jiggers.** A pair of tin lithographed minstrel dancers in Uncle Sam attire stand on stage, moving simultaneously when cranked; arms, legs, eyes, and tongue move up-and-down in tandem with the music box. Height 6 1/2". Some paint chipping near joints, else very good.

300/500

464. [Black Americana] **Tin Tap Dancer Toys. 2 pcs.** Occupied Japan: Alps, ca. 1935. Two identical celluloid tin and plastic dancing wind-up toys with hat and cane, standing at the corner of Lenox Ave and 125 St., the gateway to Harlem; arms and legs move back-and-forth once wound. Housed in original box with lid label and key. Height 9". Few scratches to paint on sign. Only one figure works.

300/500

465. **Black Americana Tin Toys. 2 pcs.** German, ca. 1930s. Pair includes a Distler one-man band pull toy and a figural whistle of an African American woman who sticks out her tongue with the device is blown into. Largest 5". Distler toy missing cymbals and string; scattered surface scratches.

100/200



466

469



470



473



471



474



467



472



475



468

466. **Black Americana Traveling Folk Art Minstrel Puppet Show.** Circa 1920s. A wooden suitcase housing a minstrel puppet show, comprised of a lithographed picturesque backdrop of rolling hills and greenery; a wooden stage with a miniature Oriental rug for the performers to stand on; three hand painted wooden jiggers with articulated hips, knees, and arms, one wearing a dress with small bells attached at the seams; and a red curtain with gold trim on rollers, which is pulled down when the performance is over. Included is the wiring and housing unit for the spotlight that would have shined down on the stage with the entertainer's harmonica and neck holder that he would have played while moving the jiggers. Box measures 21 x 18 x 5 1/2", height of box opened 21". Very good. Rare.

1,500/2,500

467. [Black Americana] **Various Card Games. 8 pcs.** Group includes *The Game of Old Maid*, *Bobs Yr Uncle*, *Game of Dr. Fusby*, *Oramic Fast Black*, *Jokamera*, and a German black Americana card game. Sizes vary. Overall good.

150/250

468. [Black Americana] **Various Target Games. 3 pcs.** Early 20th century. Includes *Happy Sam* (Milton Bradley), *Sambo Shooting* (Chad Valley), and a German shooting game that includes a Nova metal gun. Objective is to shoot the targets down with the gun that is provided. Boxed with original paper labels. Largest box 11 x 8 x 2" Boxes rubbed with few tears; internally clean, working.

250/350

469. **Black Americana Wooden Dandy Jigger.** A hand painted depiction of an African American dancer with green pants, red vest, and purple shirt. Housed in a contemporary wooden box. Height 9". Adhesive staining to left ankle, spots of hair missing, else very good.

150/250

470. **Blackwell's Durham Smoking Tobacco Checkerboard.** Detroit: The Calvert Lithographing Co., ca. 1890s. A black Americana chromolithograph featuring "The Honey Seekers." Framed, overall size 18 x 23". Center fold split, light soiling and creasing to image. Sold as is.

100/200

471. **Boxing Babies Celluloid Wind-Up Toy.** Japan, ca. 1940s. Two babies duke it out on wheeled platforms that are attached to each other by a thin metal strip; when wound the metal strip is activated by the internal mechanism, causing it to bend and making the babies' arms move in a swinging motion. Length 9". Soiling to figures, few paint chips to figures, surface wear to wheels as expected.

100/200

472. **Collection of Black Americana Related Card Games and Puzzles. 6 pcs.** American, ca. early 20th century. Lot includes *Game of Dr. Busby* (Milton Bradley), *The Improved Game of Snap* (McLoughlin Bros.), *Tops & Tails No. 289*, wooden block puzzles, and other various card games. Overall good.

200/300

473. **Collection of Black Americana Related Card Games and Puzzles. 5 pcs.** American, ca. early 20th century. Lot includes *The Comical Game of Snap* (Parker Brothers), *Sabotage*, wooden block puzzles, and other various card games. Overall good.

200/300

474. **Early Black Americana Pull Horse Toy.** 19th century. Folk art papier-mâché donkey with attached head that swivels, stands on a wooden platform with wheels, atop sits a young African American wire doll with cloth clothing and a chalkware head. Height 9". Clothing and platform soiled, small tears to leggings, else good.

400/600

475. **Early Black Americana Shooting Gallery Toy.** Harborne, England: Chad Valley, 1909. A rubber band shooting game with four heavy cardstock targets and a painted wooden and metal rubber band "Bandit Repeater" gun; in original box. The targets are balanced on a wooden fence-like object and are knocked off by shooting a rubber band. Box measures 6 x 17 x 1". Dampstaining to box, side aprons loosening. Contents clean.

300/500



477



479



476

476. **Flexible Rubber Dancer Toys. 3 pcs.** Moveable rubber dancers depicting African tribal women housed in celluloid with tropical graphics on verso. A metal rod is inserted into the figure, the small hand crank sits outside of the housing and when cranked, the dancer moves her body in various directions. Diameter 2 ½". Yellowing to casing. Good.

50/100



478

477. **Hit Me Hard Ball Toss Game.** Bavaria: Kleefeld Works. A jolly African American man sits with mouth open inviting the participant to "hit me hard." A wooden ball is thrown into the mouth and out through one of two holes in the shoes. 11 ½ x 6 x 1 ½". Lid graphics bright; insert, ball, and instructions present and clean.

50/100

478. **My Hat! Shooting Game.** Harborne, England: Chad Valley, 1920s. A rubber band shooting game featuring die cut images of four political figures and a painted wooden and metal rubber band gun, in original box. The object of the game is to shoot a rubber band at the balancing top hats to knock them off of their heads. 10 x 15 x 2". Extremities worn; heads of targets have been repaired and reinforced by later cardstock. Overall good.

200/300



480

479. **Poor Pete Celluloid Wind-Up Toy.** Occupied Japan. Painted body with cloth clothing depicting an African American baby being bitten by a dog; legs move when wound. With key. Height 6". Some soiling to clothing, else very good. Working.

200/300

480. **Poor Pete Tin Windup Toys. 2 pcs.** German: Gunthermann, ca. 1920s. Tin litho clockwork toys featuring a young African American boy eating a watermelon, both shaped and colored differently, while getting chased by a dog. Height 6". One is missing the dog to its rear end, scattered scratches. Working.

600/800



481

481. **Spark Eye. The Electronic Shooting Game.** Harborne, England: Chad Valley Works, ca. 1930s. A battery operated shooting game with a cardboard display and paper graphics depicting four characters, each with a target at their mid-section that is connected with their eye piece. When the target is shot with the pressed steel miniature rifle (King Mfg.), the monocle of the character flashes. Instructions attached to interior of lid. Box measures 10 x 16 x 3". Graphics and rifle are clean; box is missing two sides and shows signs of rubbing at extremities and dust soiling to lid. Not tested.

50/100



482

482. **Strauss Donkey Shooting Game.** New York: Ferdinand Strauss, ca. 1920s. A tin litho toy featuring an African American stable hand who gets kicked into the air by the donkey once the center target is hit. Length 15". Few surface scratches, else very good. Working.

300/400

483. **Tapping Sam. The Minstrel Man.** Baltimore, MD: Toys Inc., ca. early 20th century. A black Americana wooden dancing toy with pasted on graphics and painted moving appendages. The dancer is attached to a wire that is affixed to the platform, moving with each tap of the wire; original box included. Wooden dancer's height 12". Few chips to graphics; very good condition.

150/250

484. **Tin Clicker Toys. 5 pcs.** Germany/Japan, ca. 1930s. Black Americana tin lithograph clickers that move when clicker is pressed. Subjects include two boxers dueling it out, a man in a row boat chasing off an alligator, two jungle warriors fighting, a mother washing her child, and a stereotypical image of an African American woman. Generally 3 x 3". Light scuffing; very good condition.

300/400

485. **Watch on de Rind.** Churchville, New York: All-Fair, 1931. A black Americana marble shooting game with bright graphics. 11 ½ x 11 ½ x 2". Corners lightly rubbed; contents uncommonly clean. Very good example.

300/400

486. **Zulu Warrior Wind-Up Toy.** Japan: T.P.S. Co., ca. 1930s. Tin litho toy featuring a Zulu warrior with shield and spear wearing a silk skirt representing grass. With key. Height 6". Minor scratching to paint; very good. Working.

50/100

487. **Black Americana Mutoscope Marquee Sign.** A racial scene depicting four actors in blackface, mounted on cardstock with hand lettering. Framed, overall size 23 x 15". Old adhesive markings to image edge.

50/100



484



485



483

486



487



488



489

488. Barber, H. **Black Americana Oil Painting.** 1895. Oil on canvas depicting a young African American boy holding a chicken that he has just caught. Signed in lower right corner "H. Barber/1895." Framed, overall 39 x 25". Small tear to lower image area; closed on verso with repair strip. Canvas taut and clean.

300/400

489. **Black Americana Alligator Bottle Openers.** 4 pcs. John Wright/Wilton Products/McIntyre & Comeau. Painted cast iron with depictions of alligators chasing young men; and a corkscrew with wooden holder soldered with an image of an alligator chasing a man. Generally 4". Paint chipping throughout, else good.

200/300



490

490. **Black Americana Ashtray Lighter and Match Holder.** An Art Deco painted metal figural ashtray of an African American concealing a lighter in his outstretched tongue. Included is a small metal match holder in the shape of a swaddled African American infant; bottom of the lid is the striker. Ashtray height 3". Surface wear to match holder, else very good.

100/200



491

491. [Black Americana] **Bausch & Lomb Magic Lantern Projector with Slides.** Approximately 66 color lantern slides. Includes several boxed 3 1/4 x 3 1/2" Junior Lecturers' Series colored lantern slides that depict racially stereotypical scenes of African Americans that includes *Where There is a Will There's a Way*, *Gag-Jag the Rejected*, (2) *Ten Little African American Boys*, *How Jing Jing Bagged his Quarry*, *The Robbers*, and a boxed set of *The New Patent Colored Lithographic Lantern Slides* featuring *Poor Jerimi*. Various other rectangular sized colored slides included. Lantern length 16", height 9". Overall very good.

400/600

492. **Black Americana Carved Wooden Figure.** Hand painted folk art statue of a grinning elderly African American man holding a duck and a chicken that he recently captured. Height 9". Minor paint cracking due to age, else fine.

100/200



492



493

493. **Black Americana Cast Iron Buggy Whip Holder.** Circa 1890s. A hand painted seated man raises his arms while the springs in his back cause tension in order to be able to hold the handle in place while mounted on the wall. Height 5". Scattered paint chips, else good.

200/300



494

494. **Black Americana Cast Iron Bottle Opener.** Painted cast iron depicting of an African American girl with pink skirt climbing a sign post. Height 5". Minor paint soiling, else very good.

50/100

495. **Black Americana Cast Iron Inkwell.** A polychrome painted depiction of an African American. Hinged lid opens at eyeline to reveal the inkwell; porcelain interior missing. Height 4". Minor wear to paint; very good.

200/300

496. **Black Americana Cigar Cutter and Figural Lighter.** 2 pcs. A painted metal pocket cigar cutter depicting the face of an African American that is concealing the cutter; and a cast painted young African American boy that is holding his private parts to conceal the lighter's flame that is activated by the sparking mechanism on his rear. Lighter height 3". Minor paint chips to boy's knees; some edge wear to cigar cutter.

200/300

497. [Black Americana] **"The Early Bird Gets The Worm" Novelty Ash Tray.** A molded polychrome ash tray with a depiction of a man relieving himself as an alligator sneaks up behind him. 7 x 9". Very good.

50/100

498. **Black Americana Figural Pin Cushions.** 2 pcs. Hand colored leather and paper board depicting two African American upset faces; pins are stuck into the tops of their heads made of fabric for safe keeping. Length 3". Very minor surface wear to paint; very good. Rare.

300/500



495



496



497



498



499



500



502

499. **Black Americana Folk Art Figural Nutcracker.** Germany, 19th century. Hand painted Black Forest wooden nutcracker elaborately carved into the shape of an African American man's head in formal attire with a detailed mouth interior and vibrantly painted features; designed to crack almonds. Handle was designed to stand the nutcracker upright. Length 8". Minor surface wear. Very good.

400/600

500. **Black Americana Folk Art Full Figural Nutcracker.** [Germany], Early 20th century. A polychrome Black Forest wooden nutcracker hand carved into an image of an elderly African American woman standing on a bed of grass in a red dress and red headwrap with white polka dots, a yellow scarf wrapped around her neck, and a white apron tied around her waist. Height 8". Near fine. Scarce.

600/800

501. **Black Americana Folk Art Minstrel Jigger.** Early 20th century. A hand painted wooden figure with moving joints depicting a grinning African American in formal attire and wearing a bowler hat. Height 13". Minor paint loss to left cheek on face, else very good.

600/800

502. **Black Americana Four-Eyed Lady Cast Iron Bottle Opener.** Florida Pipe & Foundry Co. Black painted cast iron wall mount detailed in red, white, and gold paints. Length 4". Few scuffs, else very good.

50/100

503. [Black Americana] **Minstrel Whistler Automaton.** German. Carved polychrome wood figure of a minstrel wearing a jacket with a pinwheel-like mechanism on his breast pocket; spring driven animated mechanism swivels the figure's head left to right as he whistles a tune. With bird key. Height 15". Very good working condition.

800/1,000



504



505



506

504. **Black Americana Nesting Dolls.** German. Seven hand-painted wooden blackface Matryoshka dolls in formal attire. Largest 7", smallest 1 1/2". Few chips to wood interior, splits to exterior body, scattered paint wear. Good.

150/250

505. **Black Americana Novelty Costume.** Germany. A blackface costume featuring a black hosiery head cover, paper hat, plastic eyes and teeth in original box with paper label on lid. Box measures 6 1/2 x 5 1/2 x 1 1/2". Minor soiling to box; contents clean.

100/200

506. **Black Americana Novelty Plastic Alligator Pencils and Tape Measurer.** 6 pcs. Japanese. All depictions of an alligator eating a man; the head is pulled out of the alligator's mouth to reveal a pencil or tape measurer. Also included is a pencil sharpener with same imagery, lettered "Souvenir of Florida." Largest length 8". Overall very good.

50/100



507



508



509

507. **Black Americana Oil Painting.** Early 20th century. Oil on canvas depicting a young African American boy sitting in a chair holding a watermelon. Gilt framed, overall size 13 x 10". Very good.

200/300

508. **Black Americana Pocket Mirrors. 2 pcs.** Circa 1900s. Celluloid tin lithographed images; one advertising for East Kentucky Coal Sales with images of two young African American boys, and the other (Baltimore: Badge & Novelty, 1901) is a gold painted image of a wealthy African American couple with text reading "My Pal Met Her." Diameter 2". Minor chipping to gold paint, mirrors intact and clean.

50/100

509. **Black Americana Teaware Set. 10 pcs.** England: Paragon China. Complete. Overpainted porcelain saucers, bowl, teacups, baby plates, and creamer pitcher featuring "Ten Little African American Boys." Various sizes. Overall good.

200/300



510



511



511A



512



513

510. [Black Americana] **Wall Mount Bottle Opener.** Wrightsville, PA: Wilton Products Inc. A painted cast iron bottle opener depicting a cheerful African American man's face; bottle is opened with the man's teeth. With original packaging box. Length 4". Very small paint chip to right ear and left eyebrow, else fine.

50/100

511. [Black Americana] **Various Games and Puzzles.** 7 pcs. Circa 1890s/1900s. Lot of Black Americana boxed puzzles and games, including Atta Boy, African Puzzle, Four Frisky Little Darkies, and others. Box lids are in poor to good condition; interiors generally clean.

200/300

511A. [Black Americana] **Various Games and Puzzles.** 6 pcs. Circa 1890s/1900s. Lot of Black Americana boxed puzzles and games, including Snakes & Ladders, Atravers le Sahara, The Ten Little N—, and others. Box lids are in poor to good condition; interiors generally clean.

200/300

512. **Black Americana Wooden Alligator Folk Art Pipe.** Circa 1900s. A detailed wood carving of a young African American boy holding on to metal reins while riding atop an alligator; features include ebonized hands, feet, and head with inset glass eyes. Length 12". Unused; near fine.

200/300

513. **Pair of Black Americana Paper Mache Roly Poly Figures.** Polychrome painted figures that when pushed in various directions always return to the upright resting position. Taller piece 6". Soiling to paint with few chips. Good.

200/300



TOYS & NOVELTIES



515



514

514. Antique Musical Cats String Band Manivelle Automaton. German, ca. 1890s/1900s. Charming automaton depicting a trio of cats on a wooden platform, the edges painted yellow, trimmed in lace, sides covered with floral paper. When the crank is turned, one cat acts as conductor of the two others, who play a violin and cello, each moving their arms or bodies. Plaster-composition hand-painted heads, with fur and glass eyes applied, felted arms. Hand-painted wood and wire toy instruments, cotton and satin clothing. Ears drooping, loss of fur to cellist; in working order but jerky and sluggish. 10 x 13 x 8 ¼". Video upon request.

400/600



516

515. Leopold Lambert Bisque Bébé Doll Musical Automaton. Paris, ca. 1890s. Bisque head possibly by Jumeau, period lace dress, shoes, socks, and bonnet. The girl holds a wicker basket to which various small metal baubles are tied. She raises and lowers the basket, and turns her head side to side and nods, as music plays. Height 20". Original Lambert key. Basket and baubles replaced, older re-covering to base; yellow wax residue to face and bonnet. Working condition.

1,000/1,500

516. Coffee Drinking Moor Electric Automaton. Circa 1900s. Painted papier-mache head with moving brown glass eyes, articulated smiling mouth with exposed row of teeth, fleeced hair and eyebrows, realistic eyelashes, expressively painted features, and wearing a fez. He is seated cross-legged with black papier-mache hands and legs, holding a silvered metal cup and coffee pitcher. When activated, he serves himself coffee, bringing the pitcher over to the cup, pouring coffee inside and making a drinking motion, all the while energetically moving his lips, eyebrows, and eyes and turning his head from side to side. Tubing inside the cup would allow actual coffee to be used. 28 x 17 ½ x 14". Base with a later vinyl covering and leopard-print blanket, costume and slippers newer replacements. Working condition.

5,000/7,500



517

517. Black Clockwork Nodder Automaton. Late 19th or early 20th century. Painted papier-mache head, smiling mouth with exposed row of teeth, with glass eyes, fleeced hair, striped straw hat. Period costume consisting of striped trousers, cotton vest and bowtie, felt coat, paper collar and cuffs. Hands and shoes of painted paper-mache. One hand in positioned with pointing index finger, the other would grasp a pole with rotating advertising affixed. Standing upright on a paper-covered base, the surface with remnants of the original green felt covering. 27 x 10 x 10". With a period winding key; working condition.

2,000/3,000

518. A Life-Size Animatronic Abraham Lincoln Figure. Stamped on the neck by Characters Unlimited (Boulder City, NV), an electric life-size seated animatronic Lincoln, with moving arm and audio system that would allow a recitation of the Gettysburg Address. Many of the maker's figures could be converted to play on a coin-operated basis. Audio not tested; figure raised and lowered left arm when tested. Seated height approx. 54".

1,000/2,000



518



519



520



521

519. Kobe Wooden Automaton. 3 pcs. Japan: mid-Meiji era, ca. 1890s/1900s. Mechanical ebonized wooden toys unique to Kobe that were sold at souvenir shops on Motomachi Shopping Street and near Nunobiki Waterfall where tourists gathered. A knob is turned back-and-forth, making the figures move in various comedic ways; one is chopping watermelon while simultaneously eating it; another is joyously devouring a mushroom skewer; and the last is charming a snake out of a basket. Height 4 ½". Near fine. Working.

400/600

520. Trio of Kobe Wooden Watermelon-Eater Automaton. Japan: mid-Meiji era, ca. 1890/1900s. Mechanical ebonized wooden toys of three similar figures all eating watermelon. A knob is turned back-and-forth making the figures' heads move while their mouths open and close as the watermelon is brought towards them. Height 4". Near fine. Working.

300/400

521. Pair of Kobe Wooden Automaton. Japan: mid-Meiji era, ca. 1890/1900s. Mechanical ebonized wooden toys featuring two men, each on platforms, dicing and eating watermelon. A knob is turned back-and-forth moving each figure in opposite directions of one another. Height 5". Minor split to wooden platform, some surface wear to melons. Working.

400/600



522



526



527



528



529



530



531



532



523

522. **Strato and Astro Guided Missile Mechanical Toy Banks.** 2pcs. Detroit: Duro Molo/Astro Mfg., ca. 1950s. Molded metal banks resembling the Buck Rogers and Flash Gordon space ships. The Strato Bank's rocket ship, XU 232, shoots a coin at the moon (First Federal Savings of Detroit labels) and the Astro rocket shoots a coin into the nose cone of the ship. Astro bank with key. Largest height 11 1/2". Scattered spotting to Strato bank with chipping to labels; few surface scratches and missing label to Astro bank. Strato bank missing lock mechanism. Both coin mechanisms working.

50/100



524

523. **Fox the Magician Wind-Up Toy in Original Box.** Japan: NGT, ca. 1950s. Lithograph tin and fabric toy depicting a fox who produces and vanishes a rabbit under a top hat. With original box. Height of toy 6". Working. Box lightly creased, toy with scattered stains.

150/250

524. **Cragstan Fox the Magician Battery-Operated Toy in Original Box.** 1950s. Lithographed tin stand, hat, and base, magician with tin body, fabric tuxedo and cape, wire glasses. When activated, magician produces and vanishes a rabbit from hat. With original box. Soiling to fox's face, box worn at edges but stable. Not tested.

200/300



525

525. **J & E Stevens Eagle / Eaglets Mechanical Cast Iron Bank.** 1880s. Lever at side causes the eagle to spread its wings, lean toward the coin slot, and open its beak, and the eaglets propel up and open their beaks. Working condition. Patent date of 1883. Handsomely preserved example.

300/500

526. **J & E Stevens Eagle / Eaglets Mechanical Cast Iron Bank.** 1880s. Lever at side causes the eagle to spread its wings, lean toward the coin slot, and open its beak, and the eaglets propel up and open their beaks. Working condition. Patent date of 1883. Eagle's left wing replaced.

200/300

527. **Uncle Sam Mechanical Cast Iron Bank.** 1880s. Patriotic bank depicts Uncle Sam standing on a platform embossed with an eagle and the words "BANK" on both sides. Lever causes the satchel to open and coin in right hand to drop in, and Uncle Sam's goatee wobbles as if in laughter. Height 11". Mostly original paint, retouching to backside of jacket.

400/600

528. **Hall's Excelsior Cast Iron Mechanical Bank.** Circa 1870s (patent date Dec. 21, 1869). Yellow and red-painted cast iron bank with chain that pops up the lid to insert a coin (cashier figure is lacking). Height 4 1/2". Some repainting.

100/200

529. **Tammany Hall Mechanical Cast Iron Bank.** Circa 1870s. Painted cast iron bank, figure with a moving arm that deposits coin. Height 5 1/2".

100/200

530. **Cast Iron Three Wise Monkeys.** Cast iron figures with painted maroon jackets and hats. Height 5".

50/100

531. **Schieble Overland Bus Toy.** 1920s. Unrestored pressed steel bus, blue body with gilt stripes, spare mounted at rear, orange wheels with rubber tires stamped "Schieber/Firestone." Retains manufacturer's label to underside. Length 20".

300/500

532. **Electric Drinking Bear Automaton.** Paris: Roulet & Decamps, ca. 1940s. Dark brown and white fur with composition nose, feet, and mouth, glass eyes. Bear mocks the action of pouring liquid from the bottle into the cup, then raises to his mouth, lowers and repeats. Height 14". Retains an Asbro retailer silk label on the foot.

800/1,200



533



535



536



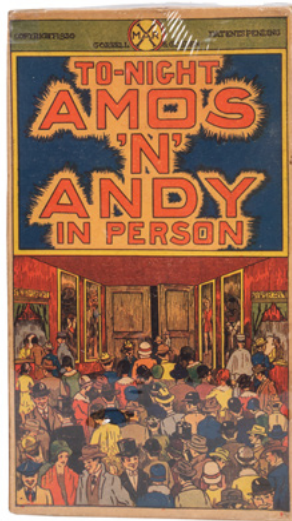
537



538



534



533. Marx Funny Flivver Wind-Up Crazy Car. Lithographed tin with dog, suitcase, and windshield intact. Length 8". Working mechanism.

100/200

534. Marx Amos 'N' Andy Wind-Up Walkers with Box. New York: Marx/Gorrell & Gosden, 1930. Lithographed tin wind-up figures, Andy retaining wire cane. When wound, the bodies shake side to side and eyes move up and down as the figures waddle forward. Includes the scarce original pictorial box, protectively re-sealed in shrinkwrap. Height of figures 11". Working condition. Very good overall, with scattered scratching and small paint losses.

1,000/2,000

535. Marx Amos 'N' Andy Wind-Up Fresh Air Cab. Lithographed tin with passenger dog, windshield intact. Length 8". Working mechanism.

150/250

536. Marx Amos 'N' Andy Walker Wind-Up Toys. Lithographed tin character toys, each shakes side to side when wound. Height approx. 11". Working mechanisms. Unobtrusive scratching, clean and brightly colored, in overall very good condition.

200/300

537. Pepsodent Amos 'N' Andy Cut Outs. Lot of Six. 1930s. Cut-out cardboard premiums depicting Amos, Andy, King Fish, Bill Hay, Fresh Air Cab, and the dog. Well-preserved with minor creasing; adhesive remnants to versos.

80/125

538. Marx Whoopee Car Wind-Up Toy. Lithographed tin toy, the cowboy rider alternately sits and stands as wheels spin. Working mechanism. Length 8".

100/150



539



540



541



542



543



544

539. Marx Joe Penner and His Duck Wind-Up Toy. Lithographed tin, retains original hat, cigar, and small wooden wheels. Height 7 1/2". Working mechanism.

100/200

540. Unique Art G.I. Joe and the K-9 Pups Wind-Up Toy. Lithographed tin walking figure with original helmet on swivel. Height 9". Working mechanism.

100/150

541. Marx Merrymakers Band Wind-Up Toy. Lithographed tin wind-up toy features four mice, two in band, one dancer, and seated conductor on top of piano. 9 x 8". Not working.

400/600

542. Unique Art L'il Abner Dogpatch Band Wind-Up Toy. Lithographed tin toy whose figures vibrate as if playing instruments and dancing. Overall approx. 9 x 5 x 8". Working mechanism.

200/300

543. Ferdinand Strauss Ham & Sam Minstrel Band Toy with Original Box. Lithographed tin toy depicts a banjoist and pianist minstrel duo, clockwork mechanism causes the figures to bounce and vibrate as if playing music. 5 1/2 x 6 1/2 x 6". With an original box, heavily worn. Working mechanism.

250/350

544. Ferdinand Strauss Ham & Sam Minstrel Band Toy. Lithographed tin toy depicts a banjoist and pianist minstrel duo, clockwork mechanism would cause the figures to bounce and vibrate as if playing music. 5 1/2 x 6 1/2 x 6". Mechanism in need of adjustment.

150/250



545



546



547



552



553



554



555



556



557

545. **Marx Pathe Movie Camera Toy.** Lithographed tin camera, sometimes seen mounted to a "news car" or solo, as here. Height 5 1/2".

80/125

546. **Toonerville Trolley Tin Toy.** Fontaine Fox, 1920s. Lithographed tin trolley with passenger. Includes flattened reproduction of original box. Height 6 1/2". Mechanism not working, will require adjustment.

100/200

547. **Keystone Steam Shovel Toy.** 1920s. Pressed steel steam shovel toy, retains decal at side, original paint, working crank with string. Length 25". Paint losses and rust.

60/90

548. **Structo Motor Dispatch Pressed Steel Toy.** Unrestored blue-bodied transport tender, original decals retained to sides and front bumper. Lacks tailgate; body shows dents, scratches, rust, and paint losses. Length 23".

400/600

549. **Buddy L Dump Truck Toy.** Circa 1930s. Pressed steel, enclosed black cab with red trailer, six-spoke original balloon tires embossed "Buddy L Mfg." Length 25". Apparently mostly original paint, retouching most evident to bumper, headlights, and trailer.

200/300

550. **Buddy L Concrete Mixer and Catapult Hangar.** Two pressed steel toys, including concrete mixer (8 1/2 x 7 x 7 1/2") and catapult hangar (12 x 8 x 5 1/2"), working mechanism. Both with original paint, unrestored, mixer retains some original decals.

250/350

551. **Trio of Tin / Pressed Steel Roadster Toys.** Including a large blue and black roadster with spare tire (Schieble [?]), length 18"; Chad Valley saloon car wind-up, 9 1/2", no passengers or driver; and Kingsbury roadster (repainted, original embossed tires). Clockwork of latter two in working condition.

250/350

552. **Doepke and Keystone Pressed Steel Bucket Loader Toys.** Circa 1930s/40s. Two pressed steel toys, including a Doepke/Barber-Greene Model Toys and a Keystone bucket loader. Both with working mechanisms, original paint and some decals retained. Height approx. 17".

200/300

553. **Trio of Tin / Pressed Steel Transportation Toys.** Including a Dayton Trolley (21"), lacking pole; green tin truck (13") with silver and red tires; and Chein 270 Broadway trolley car (8"), tin litho.

200/300

554. **Converse City Hall Park 175 Trolley.** Pressed steel, orange and yellow body, lacking side sign boards and three benches. Clockwork mechanism retained, not tested. Length 16".

250/350

555. **Converse City Hall Park 175 Trolley.** Pressed steel, green and maroon body with two original sign boards, reversible benches. Length 16". Paint loss and oxidation, partly repainted, lacks the clockwork mechanism.

250/350

556. **Lot of Vintage Prize Toys and Novelties, Some Sealed.** Primarily Hong Kong/Japan, ca. 1950s/60s. Small wooden and plastic toy figures and novelties, nine retained in original wrappers, bobblehead sports figures, and others.

50/100

557. **Novelty Miniature Contraceptives.** Approximately 180 pcs. Each miniature rubber is housed in a blue or red plastic box with various text on lid reading "If too large, will give you a smaller one", "For those that have nothing", "As we grow older, things get smaller", and "Made expressly for you." Each box roughly measures 1 x 1 x 1/2". Very good.

250/350



548



549



550



551



558



561



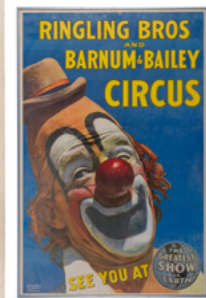
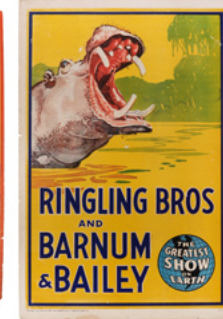
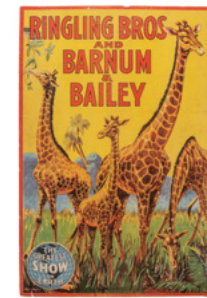
563



565



566



571



559



562



560



564



567



569



568



572



570

MISCELLANEOUS

558. **Nineteenth Century Penny Farthing / High Wheel Bicycle.** American, 19th century. Having wooden wheels, leather seat, metal and wooden frame. Overall height 45". Front wheel diam. 35". Rear wheel diam. 18". Retains pedals and step; two spokes lacking, no brakes.

800/1,200

559. **Five Bicycle Cabinet Photos and RPPCs.** German/American, 1900s/1910s. Three cabinet photographs and two photo postcards of bicyclists, including an interracial couple with notation of Daytona, FL, 1913 to verso.

50/100

560. **Industrial Butter Molding Tool by Standard.** 1900s. Metal and wooden plunger tool used to mold a one-pound brick of butter, leaving hash marks at one end for the brick to be further divided into regular sticks. Stamped by maker with patent date on center rod. Height 22".

100/200

561. **Early 19th Century American Painted Leather Fire Bucket.** Circa 1800s. Original paint, the name James Davis in yellow on a black scroll, most of the original image and lettering rubbed away, but eagle's wings and the date "180-[?]" discernible, numeral "2" painted upper right of image area. Height 19" (inclusive of handle). 8" diam.

300/500

562. **Spelter Boars Head Inkwell.** Hinged mouth opening to reveal the porcelain inkwell; mounted on painted wood. Includes a brass nib calligraphy pen with attached mother of pearl letter opener. Base length 8". Wear to base; very good.

100/200

563. **Perfection Smokeless Oil Heater.** 1900s. Cast iron stove with cylindrical body painted light blue. Wire handle. Height 24".

50/100

564. **Group of 8 Carved Wooden Bottle Stoppers.** Eight figural carved and painted stoppers, some retaining cork, four with lever-action movements of arms and/or mouths, and including one dual figure (man's hat chipped on back side). Also with two ceramic Christmas-themed stoppers. Tallest 4 1/2". Good overall condition.

50/100

565. **Primitive Kitchen Shredder/Grater Wheel.** Antique wooden and cast iron kitchen tool, hand-cranked wheel with small raised spikes, food empties into the area below. 12 1/2 x 12 x 6".

50/100

566. **Wooden Eight Ball Tabletop Display.** A turned wood base and eight ball with handmade label reading "If you wonder what this is fo'- ask to hear my 'tail' of woe." Height 8". Few cracks to wood, label fading.

100/150

567. **American Flag Erector Set Folk Art.** Metal cover of an Erector Set (ca. 1935) repurposed into metal strips and nailed to a wooden board creating the shape of an American flag. Signed and dated on verso "7/17." 9 x 14". Scuffs and soiling to metal.

50/100

568. **Group of Men's Fraternal Lodge Ribbons.** 4 pcs. Lot includes Horicon Lodge (Independent Order of Odd Fellows), Societa di Mutuo Soccorso, Sacred Heart Sick Benefit Society, and Modern Woodmen of America. Length 9". Very good.

50/100

569. **Oversized Victorian Stand Up Greeting Cards.** 5 pcs. Group of embossed die-cut cards depicting various scenes. Ornately colored and highlighted with glitter. Largest measures 12 x 19". Very good condition.

50/100

570. **Stained and Leaded Glass Window Panel.** Geometric shapes designed in greens, oranges, and browns depicting a phallic image within a wooden frame. Sight 41 x 22 1/2". Several panels fractured but sturdy.

100/200

571. **Trio of Ringling Brothers / Barnum & Bailey Circus Posters.** 1950s/60s. Including Lou Jacobs, designed by Maxwell Frederic Copland (framed, 36 x 24"); hippopotamus (42 x 28"); and giraffes (38 x 26"). Latter two mounted to foam core, well worn. Sold as is.

50/100

572. **Lot of Nine 1880s/90s Railroad Passes.** Printed cardstock, all accomplished in manuscript, to rail lines including Burlington and Missouri River; Chicago, Burlington & Quincy; Union Pacific; St. Louis & San Francisco; and Peoria & Pekin Union.

100/200

END OF SALE



ABSENTEE/TELEPHONE BID FORM

TELEPHONE BID ABSENTEE BID

Name _____ Primary Phone _____

Business Name (If Applicable) _____ Secondary Phone/FAX _____

Billing Address _____ E-mail Address _____

City/State/Zip _____

Lot Number	Description	U.S. Dollar Limit (Exclusive of Buyer's Premium)

For absentee bids, indicate your limit for each lot, excluding the Buyers' Premium. Your bids will be executed at the lowest prices allowed by reserves and other bids. If more than one bid of the same value is received, the first bid received will take precedence.	I authorize Potter & Potter Auctions to bid on my behalf up to the amount(s) stated above. I agree that all purchases are subject to the "Terms & Condition of Sale" as stated in the sale catalogue and that I will pay for these lots on receipt of invoice.	
-"++" bids indicate willingness to go up one increment if needed to break a tie. "Buy" or unlimited bids are not accepted. -References and/or a deposit are required of bidders not known to Potter & Potter Auctions, Inc. -A buyer's premium of 20% per lot is payable on each successful bid.	_____	_____
	SIGNATURE	DATE
Potter & Potter is not responsible for failure or other inadvertent errors relating to execution of your bids.		
THE AUCTIONEER'S DECISIONS ARE FINAL.	_____	_____
	FOR POTTER & POTTER	DATE

Bids may be executed via fax: 773-260-1462, mail (address below), or email: potterauctions@gmail.com until 5:00 PM (CDT) on the last business day immediately preceding the sale. *Bidding will then be closed to fax and email.*

Potter & Potter encourages you to mail, fax and email bids, as telephone operators are limited, and telephone bidders will be served on a first come, first served basis.

POTTER & POTTER AUCTIONS, INC.
3729 N. RAVENSWOOD AVE., SUITE 116, CHICAGO, IL 60613
PHONE: 773-472-1442 / FAX: 773-260-1462
www.potterauctions.com

CONDITIONS OF SALE

The lots listed in this catalogue (whether printed or posted online) will be offered at public auction by Potter and Potter Auctions, Inc., as agent for consignor(s) subject to the following terms and conditions. By bidding at auction you agree to be bound by these Conditions of Sale.

PRIOR TO THE SALE

Please examine lots. Prospective buyers are strongly advised to "in person" or by personally retained Agent, examine any property in which they are interested before the auction takes place. Condition reports may be provided if requested in a timely manner.

Condition of lots, Warranties and Representations - All lots are sold "AS IS" and without recourse, and neither Potter and Potter Auctions, Inc. nor its consignor(s) makes any warranties or representations, express or implied with respect to such lots. Neither Potter and Potter Auctions, Inc. nor its consignor(s) makes any express or implied warranty or representation of any kind or nature with respect to merchantability, fitness for purpose, correctness of the catalogue or other description of the physical condition, size, quality, rarity, importance, medium, material, genuineness, attribution, provenance, period, source, origin, completeness, historical significance of any lot sold. The absence of any reference to the condition of a lot does not imply that the lot is in perfect condition or completely free from wear and tear, imperfections or the effects of aging. No statement, whether written or oral, and whether made in the catalogue, or in supplements to the catalogue, an advertisement, a bill of sale, a posting or announcement, the remarks of an auctioneer, or otherwise, shall be deemed to create any warranty, representation or assumption of liability. Potter and Potter Auctions, Inc. and its consignor(s) make no warranty or representation, express or implied, that the purchaser will acquire any copyright or reproduction rights to any lot sold.

AT THE SALE

Registration Before Bidding - A prospective buyer must complete and sign a registration form and provide identification before bidding. We may require bank or other financial references. Potter and Potter Auctions, Inc., is under no obligation to approve the registration of any prospective registrant.

Bidding as Principal - When making a bid, a bidder is accepting personal liability to pay the purchase price, including the buyer's premium, all applicable taxes and all other applicable charges, unless it has been explicitly agreed upon in writing with Potter and Potter Auctions, Inc. before the commencement of the sale that the bidder is acting as agent on behalf of an identified third party acceptable to Potter and Potter Auctions, Inc., and that Potter and Potter Auctions, Inc. will only look to the principal for payment.

Absentee Bids - Potter and Potter Auctions, Inc. will use reasonable efforts to carry out written bids given to us prior to the sale for the convenience of clients who are not present at the auction in person. Bids must be placed in U.S. dollars. If we receive written bids on a particular lot for identical amounts, and these are the highest bids on the lot at the auction, it will be sold to the person whose written bid was received and accepted first. Execution of written bids is a free service undertaken subject to other commitments at the time of the sale and Potter and Potter Auctions, Inc. does not not accept liability for failing to execute a written bid or for errors and omissions in connection with such written bid(s).

Telephone Bids - If a prospective buyer makes arrangements with us prior to the commencement of the sale we will use reasonable efforts to contact said prospective buyer to enable them to participate in the bidding by telephone and we do not accept liability for failure to do so or for errors and omissions in connection with telephone bidding.

Bidding Increments - Expected bid increments are as follows:

Min Value	Max Value	Increment
\$0.00	\$29.00	\$5.00
\$30.00	\$99.00	\$10.00
\$100.00	\$499.00	\$25.00
\$500.00	\$999.00	\$50.00
\$1000.00	\$1,999.00	\$100.00
\$2,000.00	\$5,999.00	\$200.00
\$6,000.00	\$9,999.00	\$500.00
\$10,000.00	\$19,999.00	\$1,000.00
\$20,000.00	\$49,999.00	\$2,000.00
\$50,000.00	and above	10% of current bid

Note: the auctioneer may modify the increments at any time.

Reserves - Although the majority of the lots in the sale are offered without reserve, some lots in the sale may be subject to a reserve which is the confidential minimum price below which such lot will not be sold. The reserve will not exceed the low estimate of the lot. Reserves are agreed upon with consignors or, in the absence thereof, the absolute discretion of Potter and Potter Auctions, Inc. The auctioneer may open the bidding on any lot below the reserve by placing a bid on behalf of the seller. The auctioneer may continue to bid on behalf of the seller up to the amount of the reserve, either by placing consecutive bids or by placing bids in response to other bidders. With respect to lots that are offered without reserve, unless there are already competing bids, the auctioneer, in his or her discretion, will generally open the bidding at half of the low estimate for the lot. In the absence of a bid at that level, the auctioneer may proceed backwards at his or her discretion until a bid is recognized, and then continue up from that amount.

Auctioneer's Discretion - The auctioneer has the right at his or her absolute and sole discretion to refuse any bid, to advance the bidding in such a manner as he or she may decide, to withdraw any lot, and in the case of error or dispute, and whether during or after the sale, to determine the successful bidder, to continue the bidding, to cancel the sale or to reoffer and resell the item in dispute. If any dispute arises after the sale, our sale record is conclusive.

Successful Bid - The highest bidder acknowledged by the auctioneer will be the purchaser. In the case of a tie bid, the winning bidder will determined by the auctioneer at his or her sole discretion. In the event of a dispute between bidders, the auctioneer has final discretion to determine the successful bidder or to reoffer the lot in dispute. If any dispute arises after the sale, the Potter and Potter Auctions, Inc. sale record shall be conclusive. Title passes upon the fall of the auctioneer's hammer to the highest acknowledged bidder subject to the Conditions of Sale set forth herein, and the bidder assumes full risk and responsibility.

AFTER THE SALE

Buyer's Premium - In addition to the hammer price, the buyer agrees to pay Potter and Potter Auctions, Inc. a buyer's premium of 20%, and the applicable sales tax added to the final total.

Payment - The buyer must pay the entire amount due (including the hammer price, buyer's premium, all applicable taxes and other charges) no later than 5 p.m. on the seventh (7) business day following the sale. Payment in U.S. dollars may be made with cash; bank check or cashier's check drawn on a U.S. bank; money order; or wire transfer unless other arrangements are made with Potter and Potter Auctions, Inc. Potter and Potter Auctions, Inc. reserves the right to hold merchandise purchased by personal check until the check has cleared the bank. The purchaser agrees to pay Potter and Potter Auctions, Inc. a handling charge of \$50 for any check dishonored by the drawee. In the event buyer desires to pay by using a credit card, a convenience fee equaling 2.5% of the entire amount due shall be added to the buyer's invoice.

Shipping Terms - By Potter & Potter. Choice of packing and shipping method is strictly at the discretion of Potter and Potter Auctions. P&P generally provides in house shipping via FedEx or USPS to winning bidders.

Please allow 3–4 weeks for delivery.

Third-party shipping. Certain large, high-value, and fragile items will require the services of professional packing and transportation, or pick-up directly from our gallery. We suggest that you contact our Shipping Department before the sale for advice on the shipping and handling requirements that apply to the lots of interest to you.

If third-party shipping is chosen by the buyer or required by Potter & Potter, the buyer will arrange for removal of the merchandise from P&P within 15 days following the sale and must communicate and coordinate removal arrangements with P&P during regular business hours (Monday – Friday, 9am – 5pm).

Arrangements for third-party transportation are the responsibility of the buyer. We will not be responsible for the acts or omissions of carriers and packers whether recommended or not by us. Property will not be released to the shipper without the buyer's written consent and until payment has been made in full. Unless otherwise agreed, all purchases should be removed by the 15th day following the sale.

Risk of loss or damage in shipment. Any risk of loss or damage to the shipment through a third party carrier, once the item is removed from Potter and Potter, is at the risk of the buyer, and Potter & Potter is not liable for loss or damage of these items.

Ship to address. The winning bidder is responsible for providing Potter & Potter with an accurate address for the order destination as well as specific instructions for delivery.

Shipping costs. Shipping costs include charges for labor, materials, insurance, as well as actual shipper's fees. Buyer agrees to reimburse Potter & Potter the difference if actual shipper's fees exceed the invoice amount.

Storage fees. Potter & Potter will charge a storage fee of \$50 per week for any orders awaiting payment and/or removal for more than 15 days following the auction date. This cost shall constitute a lien against such property, which may be removed to a public warehouse at the risk, account, and expense of the purchaser.

International shipping. Potter and Potter ships internationally. All shipments will include an itemized invoice with the actual and correct purchase totals including the buyer's premium and shipping cost. International buyers are responsible for knowing their country's laws on importing items as well as paying all customs and duties fees on purchased items.

Non-Payment – If we do not receive payment in full, in good cleared funds, within seven (7) business days following the sale, we are entitled in our absolute discretion to exercise one or more of the following measures, in addition to any additional actions available to us by law: (1) to impose a late charge of one and a half percent (1.5%) per thirty (30) days of the total purchase price, prorated to commence on the date of the sale; (2) to hold the defaulting buyer liable for the total amount due and to begin legal proceedings for its recovery together with interest, legal fees and costs to the fullest extent permitted under applicable law; (3) to rescind the sale; (4) to resell the property publicly or privately with such terms as we find appropriate; (5) to resell the property at public auction without reserve, and with the purchaser liable for any deficiency, cost, including handling charges, the expenses of both sales, our commission on both sales at our regular rate, all other charges due hereunder and incidental damages. In addition, a defaulting purchaser will be deemed to have granted us a security interest in, and we may retain as collateral security for such purchaser's obligations to us, any property in our possession owned by such purchaser. At our option, payment will not be deemed to have been made in full until we have collected funds represented by checks, or in the case of bank or cashier's checks, we have confirmed their authenticity; (6) to offset against any amount owed; (7) to not allow any bids at any upcoming auction by or on behalf of the buyer; (8) to take other action as we find necessary or appropriate.

LIABILITY

Condition Reports – Potter and Potter Auctions, Inc. is not responsible for the correctness of any statement of any kind concerning any lot, whether written or oral, nor for any other errors or omissions in description or for any faults or defects in any lot. Neither the seller, ourselves, our officers, employees or agents, give any representation, warranty or guarantee or assume any liability of any kind in respect of

any lot with regard to merchantability, fitness for a particular purpose, description, size, quality, completeness, condition, attribution, authenticity, rarity, importance, medium, provenance, prior ownership history, or historical relevance. Except as required by local law any warranty of any kind whatsoever is excluded by this paragraph.

Purchased Lots – If for any reason a purchased lot cannot be delivered in the same condition as at the time of sale, or should any purchased lot be stolen, mis-delivered or lost prior to delivery, Potter and Potter Auctions, Inc. shall not be liable for any amount in excess of that paid by the purchaser.

Legal Ramifications – The rights and obligations of the parties with respect to these Conditions of Sale, the conduct of the auction and any matters connected with any of the foregoing shall be governed and interpreted by the laws of the jurisdiction in Illinois. If any part of these Conditions of Sale is found by any court to be invalid, illegal or unenforceable, that part shall be discounted and the rest of the conditions shall continue to be valid to the fullest extent permitted by law.

Discretion - Any and all of the conditions may be waived or modified in the sole discretion of Potter and Potter Auctions, Inc.

Potter and Potter offers historically significant items which may include culturally insensitive material, including but not limited to racist and sexist content. The content and form of such items does not reflect the views or values of the auctioneers or staff.

Potter & Potter Auctions, Inc.
(Illinois Lic. # 444.000388)
3759 N. Ravenswood Ave. Ste. 121
Chicago, IL 60613

Phone: (773) 472-1442
Fax: (773) 260-1462
www.potterauctions.com
info@potterauctions.com

Sami Fajuri, Managing Auctioneer
Lic. #441.001540

Text: Joe Slabaugh

Coin-Op & Advertising Consultants: Dan Davids and Paul Hindin

Note: Many supplemental and detailed images of auction lots ~ not shown in the pages of this catalog ~ are available online at Liveauctioneers.com, or directly from Potter & Potter.

Potter & Potter wishes to thank Larry Bieza, Eugene Brown, Ray Cassatta, Don Creekmore, Johnny Duckworth, Clarence Ennis, Sheila Goldman, David Hirsch, Michael Kam, Steve Kurlansik, Allen Liffman, Michael Mode, Patrick Mullaney, Ron Pulver, Don Saltzman, Diana Schieber, Paul Schmidt, Rodney Simale, Craig Stratton, Mark Thomas, Joe Vojacek, and Alex Warschaw for their assistance in the making of this catalog.

Contents copyright © 2019 by Potter & Potter Auctions, Inc.

All rights reserved. No part of this publication may be reproduced or transmitted in any form or by any means, electronic or mechanical, including photocopy, recording or any information storage and retrieval system now known or to be invented, without permission in writing from the copyright holders.





POTTER & POTTER AUCTIONS, INC.
WWW.POTTERAUCTIONS.COM