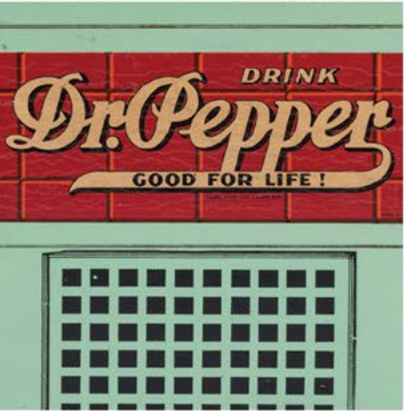




NEVADA CASINO COIN-OP & ADVERTISING AUGUST 29, 2020 GAMING BAR - FINE FOOD



POTTER & POTTER AUCTIONS

PUBLIC AUCTION #089

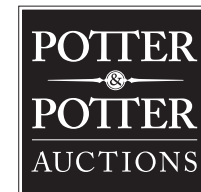
COIN-OP & ADVERTISING

AUCTION
August 29, 2020
10:00am CST

INQUIRIES
Gabe Fajuri
gabe@potterauctions.com
info@potterauctions.com
phone: 773-472-1442

CONTENTS

COIN-OP & ARCADE	3
CASINO	45
ADVERTISING	64
TOYS & AUTOMATA	118
MISCELLANEOUS	125
BLACK AMERICANA	130
TAXIDERMY	135



POTTER & POTTER AUCTIONS, INC.
3759 N. RAVENSWOOD AVE. SUITE 121
CHICAGO, IL 60613



COIN-OP & ARCADE



1. AMI Model A "A Mother of Plastic" Jukebox. 1946. When switch is turned on, embossed plastic paneling lights up in a rainbow of colors, plays 40 records. 24 x 36 x 68". No keys. 1,000/1,500

2. Buckley Jukebox Music Box Record Selector. Wall-mount five cent record selector. Steel, glass front, with molded plastic fixtures on sides (misshapen). Unrestored. Height 11 1/2". Serial number 77450 on side. 100/150

3. Three Wall Box Juke Box Record Selectors. Circa 1950s. Includes a 5 cent Wurlitzer (model 3031?); Seeburg Wall-O-Matic 100; and an AMI (model W-80; lacking internal parts). Tallest 15". Not tested, without keys; sold as is. 100/200



4. Nelson-Wiggen Piano Co. Nickelodeon. Chicago, ca. 1920. Includes 4 music rolls. Height 56". With lock and key. Well maintained with great sound. Working. 5,000/7,000

4



5. Cast Iron Strength Testing Machine. English, ca. 1900. Insert an old English penny to test your strength by squeezing the handle at the front of the device. Claw feet. 19 x 10 3/4 x 11". Restored, with finely detailed three-color paint scheme and new plates. Working, with original skeleton keys. Rare; one of perhaps a handful known.

12,000/14,000

5



6. Exhibit Supply Co. One-Cent Astrological Sign Card Penny Arcade Machine. With twelve coin slides (one for each month), which would dispense an astrological card for the month you were born. Marquee covered with glass depicts a wizard in a room with telescope, overlooking a town. Height 72". Restored. 2,000/3,000

6



7. Pace Mfg. 1 Cent Baseball Countertop Skill Game. Drop in a penny for five chances to flip a ball to score a single, double, triple, homerun, walk, or out. Score determines if you're major or minor league player. Height 16 1/2". Working. Lock and key. 400/600

8

8. Chester-Pollard 5 Cent Play Golf Arcade Game. 1928. Player receives five golf balls, left lever controls the position of the golfer and the right lever controls the swing. The goal is to hit the ball into three different holes starting with hole No. 1. 42 1/2 x 18 1/2 x 68". Original lock and keys, coin box replaced (original still present), marquee insert and score dials not original, few small chips to golfer; a fine machine. Working. 9,000/12,000



7



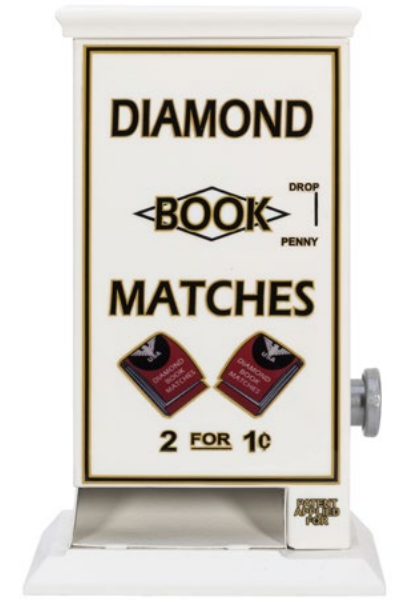
9



11



12



13



10

9. **Socker (Soccer) Countertop Coin-Operated Machine.** An early 20th century penny arcade game, in which the player attempts to kick a ball into one of five chutes to score the most points. With levers to kick; swivel the kicker's angle; and release balls from chute. Painted inside is a goalie, the word "Socker," and point denominations. Contemporary paper property label from Oakland, CA to underside. 14 x 10 x 6". Unrestored. No rear glass. Lacks soccer balls; no lock or key.
1,500/2,500

10. **ESCO 5 Cent Iron Claw Digger Machine.** Chicago: Exhibit Supply Co., ca. 1920s. No. F183. Solid oak, new marquee, construction scene in the background. Height 47". Includes 3 keys. Working.
1,500/3,000

11. **Exhibit 25 Cent Supply Rotary Merchandiser.** Circa 1930s. Insert a quarter and the inner platform rotates, the player presses the stop button to stop the wheel from turning and activate the pusher for a prize. 28 x 30 x 47". Locks, no keys.
800/1,200



14

12. **"Ben Hur" 50 Cent Single Wheel Slot Machine.** Player puts down a single 50 cent coin to bet on a color (white, yellow, green, blue, and red) and spins the wheel. If it lands on the correct color, the player is paid out the corresponding number for that individual color. Height 24". Includes keys and locks. Light chipping to wood; working.
800/1,200

13. **Diamond 2 for 1-Cent Match Machine.** Height 13". Restored.
500/750



15

14. **Dr. Pyle's 10 Cent Foot Oscillator.** California: Welcome Meter Company, ca. 1940s. Insert 10 cents, turn knob either off or on to massage feet. Original burgundy paint with gold pinstripping. 13 1/2 x 16 x 17". Original lock, no key. Few paint chips, else fine. Working, set to free play.
200/400

15. **ESCO 25 Cent "Select-Em" Dice Trade Stimulator.** Chicago: Exhibit Supply Co., 1934. A coin is inserted, a number is selected by the user to predict what the dice will roll, a ball of gum is offered for each coin played. 10 x 14 x 5". Original key and lock; very good.
200/300



16



18



19



17



20



22



21

16. Exhibit Supply Co. 1 Cent Card Vendor. Oak cabinet, mirrored front. Includes original cards. 17 ½ x 18 x 11". Expertly restored. Locks and keys. Overall, very good.

500/700

17. Exhibit Supply Co. Peep Show Coin-Operated Barrel Viewer. Original figural penny arcade game features busts of a man and woman standing behind barrels. Drop in a coin to light up the inside of the barrel and peep inside. Height 71".

1,000/2,000

18. Football Punt Return 5 Cent Booze Barometer. Northwestern Mfg. Co., ca. 1950. Football-themed "booze barometer" skill game. See how far you can run the ball back before shorting out. Lock and key. 17 x 20 x 7". Expertly restored, not tested. Fine.

300/500

19. Hot Rod Booze Barometer. Morris, III: Northwestern Corp., 1950s. Sheet metal. Tests the sobriety of bar patrons to move the ring along the curved rod without touching the metal. 18 x 18 ½ x 7". Lock and key. Expertly restored, not tested. Fine.

400/600

20. "I Owe You" 25 Cent Dice Trade Stimulator. 1934. A coin is inserted, four dice with letters are rolled, and the user tries to spell "IOU". 10 x 14 x 5". Original lock, no key. Some soiling and staining to graphics, else good.

200/300

21. Mills 5 Cent Punching Bag / Boxing Strength Test Arcade Machine. Chicago: Mills Novelty Company, ca. 1903. Machine lowers a bag for the customer to punch, measuring the force of your strike (but dial presently does not move). Height 79". Handsomely restored, including few replaced bolts and fasteners, rear panel door and locking mechanism, and bag; most parts original; with keys and locks. Working.

3,500/4,500

22. French Countertop Coin-Operated Skill Game. France, ca. 1900s. Walnut cabinet with brass and nickel-plated fixtures, velvet-covered game area with foil and paper ornaments and labels. The player attempts to flick a ball into one of the three upper funnels to win tokens. Payout cup. 26 x 17 x 7". No key.

900/1,300



23



24



25



27



28



29



30



26

23. Dewey Penny Drop Trade Stimulator Skill Game. Chicago: Jonas Bell & Co., ca. 1900 (date on metal plaque Jun. 22. 97; cabinet stamped "156-?"). Drop a coin in the chute at the top of the device; your prize (probably cigars) is determined by where it lands below. With lithographed portrait of Admiral Dewey on the playfield. Height 20 1/2". With lever to release coins into glass-fronted catch below. General wear, but good condition overall. Lock, no key. Scarce.

600/800

24. Allwin "Win a Nestle's Milk Chocolate" Wall Gambling Machine. England: Oliver Whales, ca. 1955. Wall-mounted loop-the-loop gambling machine. Operates with old-style English Penny. Height 32". No key.

300/600

25. Exhibit Supply "Nudist Colony" Coin-Operated Arcade Machine. Exhibit Supply Co., ca. 1957. Upright coin-operated viewer machine with pictorial glass front. Height 42 1/2". Originally, viewers who hoped to see a naked woman would have instead been shown an actual ant colony inside, but this machine bears a ceramic nudist tray and pictorial backdrops in the cabinet. No lock or key (back door retained but removed).

500/750

26. Scientific Machine Co. "Spitfire" Skill Game Gum Vendor. Circa 1940s. World War II-era countertop skill game, having a painted wooden cabinet with glass cover. Painted wooden parts and silkscreen graphics, with nickel-plated "U.S. 1" warplane. A front lever controls the positioning of the plane, and a side knob releases the "bomb" a player attempts to drop into the funnels to sink the battleship. A gumball would also be dispensed. 21 1/2 x 14 1/2 x 9". In good unrestored condition, working levers. No key.

1,000/2,000

27. Baker Ball Shooting Gallery Arcade Game. Circa 1940s. Electro-mechanical shooting gallery, wooden cabinet with cast metal fixtures. Players aim to shoot ducks which rotate into view at the opposite end. 34 x 15 x 10". Working. With keys.

1,000/2,000

28. Early Fairground Shooting Gallery. Circa 1900s. A woman swings an object at a man's head when the target is hit. Painted sheet metal. Length 18", height 18". Scattered wear from bullet marks.

300/500

29. Mills Five Cent Jockey Poker Hand Trade Stimulator / Slot Machine. Chicago, ca. 1900. Five-reel trade stimulator, in oak cabinet with fancy cast metal marquee, rounded glass front covering five reels of playing cards. Decal decorations applied to front and sides. Three coin slots. Win between one and 100 cigars depending on the poker hand shown. 21 x 16 x 12". Original marquee. Lock and key.

3,500/4,500

30. RMC 5 Cent "Major Series" Trade Stimulator. Circa 1933. Place a nickel in slot, receive 10 balls (5 red, 5 blue). Push lever to "hit" ball and score a "run". Lock and key. Height 17 1/2". Scattered paint scuffs and soiling; working.

400/600



31



32



34



33

31. **Shoot Hitler 1 Cent Countertop Trade Stimulator and Gumball Vendor.** Paul Bennet Company, ca. 1940. Place a penny in the gun slot, aim into Hitler's mouth and shoot. If target is hit, the customer gets their penny back; if missed, the customer gets a ball of gum. 19 x 8 x 16". Minor surface wear; with original key and lock. Unrestored and working.
1,500/2,000

32. **Shoot to Chew 1 Cent Pistol Arcade Game and Gumball Vendor.** Silver King Novelty Co., ca. 1940s. Penny is shot from pistol at the target, a bullseye gets the user's coin back and a gumball is dispensed. Length 19". With key. Lacking die-cut buffalo marquee, inner label chipped, few scuffs to surface with some discoloration to rear panel.
400/600

33. **Tin Mutoscope 1 Cent With "Exotic Dancer" Reel.** New York: International Mutoscope Reel Co., ca. 1935. Art Deco style full metal stand, original marquee with hand painted marquee insert, original reel. Height 67". Locks, no keys. Appears to be refurbished. Working.
1,800/2,200

34. **Whirlwind 1 Cent Trade Stimulator.** Cast aluminum body. Insert a penny, and if the three reels land on your "fortune", a gumball is dispensed. Height 13 1/2". With locks and keys. Working.
600/800



36



35



37

35. **Federal Machine 10 Cent Popcorn Warmer and Vendor.** Insert one dime, two nickels, or a quarter. Height 61". Locks and keys. Refurbished.
600/800

36. **National Vending Black Diamond Vending Machine.** One-cent gum vending machine. Wooden case with advertising on each side and front; windows allow view of product. Original unrestored condition. 17 x 7 x 4 1/2". Lock, no key; working. See *Silent Salesman Too*, p. 102.
6,000/8,000

37. **Red Star Griswold Peanut Machine.** Rock Island, ca. 1914. Large cast iron five-cent peanut vendor with embossed base, black finish with red stripes. Griswold star logo on knob. Height 18 1/2". Period lock and key. Working.
1,800/2,200



38



40

38. **Griswold Peanut Vending Machine.** Rock Island, ca. 1914. Cast iron five-cent peanut vendor with elongated globe. Six-sided base, crank handle marked "Brayton." Height 20". Vintage lock and key. Working.

1,600/1,800

39. **Nobby's Peanut Machine.** Camperdown, NSW: Electric Control and Engineering, ca. 1925. One cent (large English penny) vending machine with aluminum case bearing a floral design. Crank handle and claw feet. Later advertising card in top window. 38 x 12 x 14". Lock and keys. Working. An uncommon Australian machine.

1,500/1,800

40. **Lion Five-Cent Peanut Vendor.** Chicago: A. Marx & Co., ca. 1900. With cast lion's head at dispensing chute and cast figural feet supporting an elongated globe and overstated and large coin entry bearing the word "LION." Hand painted flowers on side panels and other pinstriped details. 21 x 9 x 10". Lock and key. Working. A scarce and desirable machine. See *Silent Salesman Too*, pp. 90.

12,000/15,000



39



43



44



45

41. **Northwestern 1 Cent Sellem Match Dispenser.** Northwestern Manufacturing, ca. 1912. Handsomely restored for free play. Height 13 1/2". Vintage Eagle Lock.

650/900

42. **Ad-Lee Novelty Co. Duette 10 Cent Vendor.** Art Deco design. Height 19". With key and lock. Working. Rare. Featured in *Silent Salesman Too* by Bill Enes.

300/500

43. **Ad-Lee Novelty Co. E-Z 5 Cent Gumball Machine.** Chicago, 1908 (patent date stamped to rim of tray). Cast iron base and lid with original marquee sign. Machine would dispense gumballs containing a slip of paper through the middle. Match the number to award card and win a prize. With key and Eagle padlocks. Height 23". New marquee stand.

800/1,200

44. **Ad-Lee Novelty Co. E-Z 5 Cent Gumball Machine.** Chicago, patent date 1908. Cast iron base and lid with marquee, original decal (chipped with losses). Machine would dispense gumballs containing a slip of paper through the middle. Match the number to award card and win a prize. Height 18 1/2". With keys and locks.

800/1,200

45. **Ad-Lee Novelty Co. Model D 1 Cent Gumball Machine.** Green cast iron base and lid, Columbus globe, facsimile decal. Height 16". Locks and keys.

800/1,200



41



42



47



46



48



49



50



51



52



53



54



55



56



57

46. Aluminum 5 Cent Gumball Vendor. Two balls for every fourth nickel. Polished finish base and lid, original decals "Blue Ribbon Chewing Gum". Height 14". With locks and keys. 600/800

47. Auto Sales Chiclets Chocolate Chewing Gum Vendor. Porcelain dispenser, on original and very rare embossed Auto Sales stand. Height 64". With key. 2,500/3,500

48. Automatic Games 1 Cent King Jr. Bulk Countertop Vendor. Circa 1940. Blue painted pressed steel base and lid with glass cylinder globe. Kiwanis decal. Height 10". Original lock and key. Metal spotting to lid and base, light corrosion to interior. Working. 600/800

49. Atlas Bantam 5 Cent Gumball Machine. Circa 1940s. Cast aluminum body affixed to tray. Height 10". Oxidation to tray, old paint residue in few spots. 100/200

50. Ajax Deluxe Hut Nut Vendor. Newark, ca. 1947. Cast aluminum body, includes original cup dispenser and decals. Height 23". Keys not included; one lock partially broken. Heating element not tested. 500/700

51. Bluebird 1-2-3 1 Cent Gumball Vendor. Circa 1915. Glass globe on chrome base with "Blue Bird Gum" and "6 balls 3 cents" decals. With later marquee. Height 17". Includes key. 700/900

52. Bluebird 1 Cent Penny Drop Machine. Circa 1930s. After a penny is inserted, the player receives a gumball and attempts to control a chute in the lower compartment for a chance to win the money back. Original decal and Black man label. Height 21". With lock and key. Working. 1,000/1,500

53. Calvert 1 Cent Countertop Gumball Vendor. Baltimore, MD. Cast iron body painted red and black. Height 13". With locks and keys. 400/700

54. C.D. Stover Hot Nuts 1 Cent Vendor. Waterloo, IA, ca. 1933. An aluminum base with futuristic design, including jeweled front, original decals. Height 17". With lock and keys. Mechanics working; heating element not tested. Uncommon. 600/800

55. Chic-Mint 1 Cent Gumball Vendor. Wilmington, Delaware, ca. 1915. Red sheet metal base, flat top glass globe with facsimile decal. Height 12". With lock and key. Minor wear to paint. 600/900

56. Columbus "M" 1 Cent Gumball Vendor. Circa 1935. Filled with Ford chiclets. Height 14". With new keys and locks. Slight corrosion to gumball chute door and chrome plating. Working. 200/300

57. Columbus 1 Cent Mystery Gumball Vendor. Green cast iron base and lid, octagonal globe. With lock and key. Height 12 1/2". 300/500



58



59



60



61



62



63



64



65



66



67



68

58. Columbus 1 Cent Model A Gumball Vendor with Hot Nut Light Up Top. Circa 1915. Cast iron dish base and lid with light. Height 21". With locks and keys. Working. 700/1,000

59. Columbus 1 Cent Model A Gumball Vendor. Columbus, OH, ca. 1910s. Cast iron red base, glass globe with embossed Columbus star logo. Height 15". Barrel locks and keys. Restored and working. 400/600

60. Columbus 25 Cent Model 34 Gambler Gumball Vendor. Red cast iron base and lid. Two locks, one key. Height 15". Working. 600/900

61. Columbus 1 Cent Model 14 Gumball Vendor. Red cast iron base and lid, glass globe with "Profit Sharing Gum" label. Height 14 1/2". Two locks, one key. Working. 400/600

62. Columbus 1 Cent Model 18 Gumball Vendor. Cast iron base and lid, original "Ball Chewing Gum" label (small brown stain). Height 14". With two locks, one key. Working. 400/600

63. Columbus 1 Cent Model 21 Lamp/Gumball Vendor. Mint green base and lid with octagonal globe, facsimile decal, lamp shade not original. Height 20". Two locks, one key. Working, including light. 600/900

64. Columbus Model A 1 Cent Peanut Vendor. Columbus, OH, 1910s. Embossed globe with star decal. Height 16 1/2". Expertly restored. Barrel locks and keys. 250/450

65. Columbus Model M 1 Cent Porcelain Vendor. Columbus, OH, 1930s. Restored vending machine with barrel locks and keys. Height 14". Original globe, partial decal. 200/400

66. Columbus Belgian Model A 1 Cent Gumball Vendor. Possibly Model A. Aluminum base and lid. Height 15". New locks and keys. Working. 300/500

67. Columbus Vending Co. 1 Cent Model MG Gumball Vendor. Columbus, ca. 1928. Green porcelain base and top, with original label (slightly chipped). Smooth top as opposed to the nipple top seen on some other examples. Locks and key. Very good. 250/350

68. Columbus Model A Gum Ball Vendor. Cast iron base and lid with octagonal globe. Height 15". With key and locks. 300/500

69. Columbus World's Best 1 Cent Vendor. Height 16 1/2". Body slightly oxidized. 1,000/1,500

70. Coin-Operated Dixie Cup Dispenser. Dixie-Vortex Co. Including cups and keys. Height 33". 300/500

71. German Countertop Candy Dispenser. DVG, ca. 1910s(?). Insert coin to receive a piece of candy. Cast iron body with central oval mirror intact. Height 32". Lacking one of the metal pushers. 600/800



69



70



71



72

73

74



75

76

77

72. **Globe Machine Co. Gumball Vendor.** Ft. Worth, TX. Cast iron base and lid, gilt pinstriping to base. Height 13". One key, two locks. Restored, working.

1,000/1,500

73. **Hamilton "Mickey Mouse" Gumball Vendor.** Kansas City, MO, ca. 1938. Facsimile decal. Height 15". With key and lock.

600/800

74. **Hance "Fat Boy" Coin-Operated Vending Machine.** Black cast iron base, gilt detailing, original flared glass globe, and a pull mechanism to dispense the product. Height 19". Working, with keys and lock. Restored.

2,400/2,800

75. **Hance Hot Nut Vending Machine.** 1920s. Vintage one-cent peanut machine with original decal to elongated globe. Porcelain base. With light-up warmer at top. Height 22 1/2". Lock and key. Working. Similar to the Hance "Rex" machine, but with a different topper/warmer. Uncommon.

1,600/1,800

76. **Hance Foundry Co. 1 Cent Rex Gumball Vendor.** Ohio, ca. 1908. Cast iron base and lid. Facsimile decal. Lock and key. Light paint chipping to base.

1,200/1,600

77. **Hance Foundry Co. 1 Cent Standard Rex Nut Vendor.** White porcelain base and lid. Height 18". With locks and keys. Working.

1,000/1,500



80

81

78. **Hawkeye Novelty Co. 1 Cent Vendor.** Des Moines, ca. 1940. Restored base and lid. Height 15". Lock and key. Working.

150/250

79. **Hawkeye Novelty Co. 1 Cent Vendor.** Des Moines, ca. 1940. Red pressed steel. Height 15". Restored base and lid. Lock and key. Working.

100/200

80. **Howard Home Humidor 15 Cent Cigarette Vending Machine.** New York: C.B. Howard Co., 1923 (patent date). In wood end table with match book storage, original interior labels, rear door with original lock (no key but unlocked). Height 28". Working.

500/700

81. **Boxed Nut 5 Cent Vendor.** Wood and aluminum body with original paper graphics (lightly marred). Includes 10 original product boxes. Height 28". With key and lock.

400/600

82. **Lee Gumball Vendor.** Circa 1930s. Aluminum base and lid. Height 13". With lock and key. Working.

700/1,000

83. **Liberty 1 Cent Gumball Vendor.** Kansas City, MO, ca. 1915. Refurbished gilt paint, original decal. Height 12". Original lock and key. Working.

1,200/1,800

84. **Little Nut Type-C 1 Cent Vendor.** Unusual base. Height 11". With key.

800/1,200



82

84



83



85

86

87

88

93

94

95



89



90



91



92

85. Master 1 Cent Peanut Vendor. Norris, IL: Norris Manufacturing, ca. 1920s. Red and black finish. 16 x 8 x 8". Working. Restored, with keys.

200/400

86. Merit Mystery "33" 5 Cent Hot Nut Vendor. Heating element is present but has been bypassed so that the light works without heating the machine (can be reconnected). Height 19". Missing rear coin door, no lock and key.

200/300

87. "Mettre Une Pièce" French 1 Cent Vendor. Unusually shaped globe on an Art Deco style base affixed to a four-legged platform, with original label (slightly chipped). Height 15". Locks, no key. Few surface scratches to platform. Working.

200/300

88. National Novelty Co. 1 Cent Gumball Vendor. Red cast iron base, original globe with new "American Maid" decal. Height 12". With locks and keys. Working.

400/700

89. Northwestern Corp. 1 Cent Model 31 Peanut Vendor. Seafoam green porcelain knob, original decal. Height 15". Two locks, three keys. Knob jammed.

200/300

90. Northwestern Corp. 1 Cent Model 33 Junior Peanut Vendor. Morris, Ill., ca. 1933. Machine designed for limited space locations. Green porcelain base and top, "Always Fresh" marquee. Height 15 1/2". Facsimile decal. No key, lock opens with screwdriver. Working.

800/1,200

91. Northwestern Corp. 1 Cent Model 33 Junior Nut Vendor. Morris, Ill., ca. 1933. Machine designed for limited space locations. Yellow porcelain base and top, facsimile decal. Lacking marquee. Height 13". Globe cracked, missing key (lock opens with screwdriver). Working.

600/800

92. Northwestern Corp. 1 Cent Model 33 Candy Vendor. Morris, Ill., ca. 1933. Cast iron red porcelain base and lid with cylinder globe. "Northwestern" embossed logo. With two locks and two keys. Base plate. Filled with gumballs. Working.

200/300

93. Northwestern Corp. 1 Cent Model 33 Nut Vendor. Morris, Ill., ca. 1933. Cast iron red porcelain base and lid with cylinder globe. Height 16". Locks and keys. Restored base and lid. Working.

200/300

94. Northwestern Corp. 1 Cent Pure Gum Merchandiser Vendor. Circa 1919. This was one of Northwestern's first gumball vendors and was advertised as the "square ball gum vendor". Height 15 1/2". Two locks, one key. Chipping and staining to paint. Working.

900/1,200

95. Blue Bird Magic Vendor 1 Cent Gumball Machine / Trade Stimulator. Circa 1935. Insert a penny and the machine both dispenses a gumball and the center wheel spins. If the wheel spins to the word "Magic" the customer would win a prize. Height 18". Chute cover by Peerless Products (Kansas City). Working. Lock and key.

2,200/2,600

96. Wilbur Suchardt Vending Machine. Chicago, 1930s. Four-column one-cent cast iron vending machine with mirrored front. Height 15". Lock and key. Working. Uncommon.

1,200/1,400

97. Little Nut Gumball Machine. Little Nut Vendor Co., ca. 1935. Cast iron machine with cast door for vending gumballs. Height 10". Working, no key. Uncommon.

650/900



96



97



98



99



100



101



103



104



105



106



107



108



109



102

98. Northwestern 33 Yellow Porcelain 1 Cent Gumball Machine. Morris, IL, ca. 1933. Height 16". Working, with key and original decal. Uncommon in this color.

500/800

99. Northwestern Model 60 Gumball Machine. Morris, IL, ca. 1960s. One-cent vintage vending machine with green metal case. Height 16". Working. No key. Restored.

125/250

100. Northwestern 33 Porcelain Peanut Machine. Morris, IL. Blue Porcelain base and white porcelain top. Original globe and decal (degraded). Height 15 1/2". Working with keys.

400/600

101. Ohio Vending Machine Co. 1 Cent "Model 1" Peanut Vendor. Circa 1930. Cast aluminum with facsimile decal. Height 15". With keys and locks. Working.

400/700

102. Champion 1 Cent Catalogue Dispenser. Champion Vending Machine Co., ca. 1899. Two column vendor, wooden casing, bolted to a metal stand with wheels. The machine would dispense a 36-page catalogue for one penny. Height 25" without stand. Vertical split to front insert.

500/700

103. 1 Cent Combination Vendor. Penn, ND, patented Oct. 25, 1908. Four-section vending machine, inner columns are for tabs of gum and the outer columns vend bulk. Height 23". Two locks, two keys. Paint light chipped, few small splits to wood.

600/900

104. Panther 1 Cent Vending Machine. Original paint. Height 16". With keys.

600/800

105. Pulver Company Inc. 1 Cent Midget Spearmint Tab Gum Vendor. Rochester, NY, ca. 1950. Sheet metal. Front panel chrome plated. Most likely hung at transit locations. Lock and key. Height 26". Working; Fine.

200/300

106. R.D. Simpson "A" 1 Cent Nut Vendor. Columbus, ca. 1920. Refurbished paint, new "Quaker Maid" decal, claw foot base. Height 14". Two locks, two keys (new). Working.

700/1,100

107. R.D. Simpson "Well Here We Are" 1 Cent Convertible Vendor. Circa 1927. Original "Supreme Products" decal (Appleton Novelty; chipped and stained). Height 14". New key and locks. Working.

400/600

108. R.D. Simpson "1-2-3" 1 Cent Vendor with Flags. Original marquee. Height 13". Body slightly oxidized.

300/500

109. Reliable Nut Co. 1 Cent Vendor. Green porcelain base, octagonal glass globe. Height 16". Lock and key. Working. Featured in *Silent Salesman Too* by Bill Enes.

800/1,200



110



111



112



113



117



118



119



120



114



115



116

110. **Royale Bicycle Bell 1 Cent Gumball Vendor.** Circa 1915. Facsimile decal. Height 15". Two locks, three keys.

500/800

111. **Stollwerck's Gum and Chocolate Vending Machine.** Volkmann Stollwerck, ca. 1892. Wood body with wood-grain porcelain panels, original graphics. Height 30". Original lock and key. Few small chips to porcelain, minor splitting to wood.

1,000/2,000

112. **Simpson Famous 1 Cent Confection Vendor.** Cast iron base and lid, facsimile decal. Lacking marquee. Height 12". New locks and keys. Working.

200/300

113. **Silver King Corp. 1 Cent Nut Vendor.** Aurora, Ill. Tapered glass globe with red cast iron base and lid. Height 14". With lock and keys. Restored base and lid. Working.

100/200

114. **Silver King Corp. 5 Cent Musical Ballerina Nut Vendor.** Aurora, Ill., ca. 1950. Five cents not only bought you a handful of nuts but also music and a dance from the ballerina perched atop the lid. Height 19". Lock and key. All mechanics working.

700/1,000

115. **Silver King Corp. 5 Cent Hot Nut Vendor.** Aurora, Ill., ca. 1947. A ruby red hob nail glass dome flashes atop this machine. "Try Some" embossed on flap. Original lock and key. Height with stand 49". Electrical component untested, few chips to decal; very good.

300/400

116. **SuSu Salter Nuts Dispenser Jar.** Height 16".

100/200



121



122



123

117. **Victor Basketball 1 Cent Gumball Vendor.** Chicago: Victor Vendor, ca. 1950s. Labeled "Snap Ball", penny is inserted, and a gumball is dropped onto a lever for the user to "shoot" into the basket, gumball is dispensed if user made it into the basket. Height 14". With keys and locks. Front panel loose.

150/250

118. **Victor Vending Co. 1 Cent Topper Bulk Vendor.** Chicago, ca. 1938. Pressed steel base and lid. Height 15". Lock and keys. Working.

150/250

119. **Victor 1 Cent Gumball Baseball Game Machine.** Circa 1950s. One-cent gumball machine installed in pinball-style cabinet. A penny releases your gumball which you try to shoot to score a strike. 19 x 20 x 9". With key.

300/400

120. **Victor Model V 1 Cent Gum Ball Machine.** Circa 1940s. Red and black painted base, retains original decals. With lock and key. Height 15".

125/200

121. **Victor Topper 1 Cent Gum Ball Machine.** Circa 1950s. Red and black base, retains original NABV decal, with lock and key. Height 16".

150/250

122. **William Michael 1 Cent Peanut Vendor.** Circa 1930s. Cast iron base and lid, uncommon globe shape. Height 14". With locks and keys. Working.

600/900

123. **Yu-Chu 1 Cent Gumball Vendor.** Circa 1925. Cast iron base, uniquely shaped globe, "American Maid" decal. Height 8 1/2". Lacking coin cover plate.

200/300



124



127



130



131



132



125



128

124. O.D. Jennings Co. Puritan Girl Payout Slot Machine. Chicago, ca. 1928. Aluminum case. The only known example of a payout Puritan Girl, most likely constructed for the English market as it does not accept American coins. Reel strips and award card hand-lettered. Lock and key. Rare.

2,000/4,000

125. Charles Fey 3 in 1 Dicer. San Francisco, ca. 1927. Coin-operated trade stimulator accepts a nickel, dime, or quarter. Cast metal machine with dice motif at front and ladies on side panels. 8 x 9 3/4 x 8". Lock and key. Working. Paper likely replaced. Uncommon.

1,800/2,200

126. Cast Iron Dice Popper. Lincoln, NE, ca. 1920. Five-cent coin operated gambling machine; insert the coin and crank the handle to roll the dice under the glass dome. The total on the dice determines the number of cigars the player wins. Award card under glass at front, maker's logo on side panel. 11 x 8 1/2 x 6 1/4". Restored.

1,500/1,800

127. Monarch Pee-Wee 5 Cent "36 Lucky Play" Roulette Machine. Chicago (?), ca. 1935. Coin-operated aluminum case with miniature roulette wheel under window, with three small balls. Payout is determined by the number of balls that land on a specific color. Lock and key. 9 x 8". Working.

1,000/1,200

128. Improved Kelley 1 Cent Trade Stimulator. Kelley Mfg. Co., ca. 1905. One-cent five-reel machine housed in a handsome oak case with cast metal features at front, and a coin hanging from the marquee at top. Height 21 1/2". Working. Original paper and reel strips. Restored.

1,000/1,200

129. Five Cent Wizard Clock Trade Stimulator. Progressive Manufacturing, ca. 1910s. After a nickel is dropped in, the clock chimes one, two, or three times, and issues corresponding tokens. Typically used to stimulate the sale of cigars. 10 x 12 1/4 x 6 1/4". Working, but clock needs adjustment.

450/900

130. Groetchen Mfg. 1 Cent "Imp" Trade Stimulator. Depression-era countertop machine. Match three-of-a-kind on the reels to win a 15-cent pack of cigarettes and a ball of gum. 6 x 5 x 4 3/4".

150/300

131. Early Fairest Wheel Trade Stimulator. Circa 1890. Plays five cents. Drop in the coin as the wheel spins to win between one and five cigars. Height 17 1/2". Complete but in need of adjustment. Perhaps the earliest version of the Fairest Wheel produced; this model does not use ball bearings in its construction.

900/1,200

132. The Veteran Trade Stimulator. Manufacturer unknown. Wooden cabinet with blue crackle finish. Countertop pinball-type five-cent skill game. 7 1/2 x 12 x 10". Working, with keys. Uncommon.

750/1,500



126



129



133



134



135



139



140



141



136



137



138



142



143



144

133. Daval Buddy 1 Cent Trade Stimulator. Daval Mfg., 1940s. Height 8". Working well with gum vendor and keys.

700/900

134. Old Age Pension Trade Stimulator. Chicago: Exhibit Supply, 1930s. 25-cent countertop dice game with wooden cabinet. 5 x 10 x 14". Working condition with keys.

500/750

135. Whirlwind Trade Stimulator. Pierce Tool & Mfg., 1930s. Cast aluminum body with painted blue and red stripes. Original three-reel slot mechanism. Insert a penny and the machine divines your fortune based on the reel strips shown. Height 13". Locks and keys. Working.

800/1,000

136. Dicette Trade Stimulator. Chicago: Bally Mfg., 1933. Five-cent machine with wooden case. 15 x 13 x 6". Original condition, working with keys.

650/850

137. Superior Mfg. 1 Cent Trade Stimulator. Three-reel machine with cigarette reels. Cast metal front with wooden case. Height 11 1/2". Western Detective Association label on side panel. Original condition, working, with keys.

700/900

138. Puritan Baby Vendor Trade Stimulator. 1920s. Cast aluminum coin-operated five-cent trade stimulator/three-reel slot machine. With gumball payout. Cast aluminum case. Height 11". Lock and key. Working.

650/850

139. Hoffmann Novelty "Little Dream" 1 Cent Trade Stimulator. Wooden cabinet contains a penny drop game. Win back one cent or up to 25 cents depending on where the coin lands. Height 17 1/2". Lock, no key. Lacks front glass.

200/400

140. Groetchen 1 Cent Zephyr Trade Stimulator / Gum Vendor. Circa 1930s. Countertop trade stimulator with three-reel slot mechanism. If the player lines up the right combination, they win one to three packs of cigarettes, or otherwise receive a gum ball. 10 1/2 x 9 x 8". With lock and keys. Working.

200/300

141. Groetchen 1 Cent Imp Trade Stimulator. 1930s. Small countertop three-reel trade stimulator with gum-ball vendor. Players who lined up three of the same cigarette brands would win a pack. 6 x 5 x 4 3/4". Unrestored with non-functional mechanism. Lock, no key.

125/225

142. Groetchen 1 Cent Mercury Cigarette Trade Stimulator. Countertop three-reel trade stimulator. Line up three of a kind of a cigarette brand and win a pack. 11 x 10 x 9". Unrestored with non-functional mechanism. Lock, no key.

150/250

143. GEM 1 Cent Trade Stimulator Gum Vendor. Circa 1930s. Green cast metal cabinet, containing a three-reel slot machine. If the reels show three of a kind of that brand of cigarette, the player wins one to ten packs. Working, including gum ball vendor. 12 1/2 x 8 x 8". With locks and keys.

250/350

144. GEM Trade Stimulator. With cigarette reels. Including penny-operated gum dispenser. Height 12 1/2". Lock, no key. Working.

400/600



145



146



147



151



152



153



148



149



150



154



155

145. **Mills 25 Cent Diamond Front Slot Machine.** Chicago: Mills Novelty, 1940s. Classic three-reel machine, with handsome chrome finish on wooden base. Height 25". Lock and key. Working.

1,000/1,500

146. **Mills 5 Cent War Eagle Slot Machine.** Chicago: Mills Novelty, ca. 1930s. Unrestored three-reel nickel slot machine retaining original parts, including castings, back door, mechanism, and reels. Height 26". Mechanism jammed and non-functioning; to require restoration. No keys.

800/1,200

147. **Lucky Devil Sega 10 Cent Slot Machine.** Height 26". Pale blue/green finish. With lock and key. Working.

800/1,200

148. **Mills Puritan "Baby Bell" 5 Cent Trade Stimulator.** Mills Novelty, early 20th century. Three-reel trade stimulator with original reel strips and award card, case repainted in black and red. The sum of the numbered reels determines how many cigars the player wins. 10 x 9 x 7 1/4". Lock, no key.

300/500

149. **Daval Gum Vendor 1 Cent Trade Stimulator.** 1932/33. Countertop three-reel trade stimulator with gum vendor, with original reel strips and award card, and unrestored cabinet. Player would receive a piece of gum and their fortune based on the reel combination shown. 10 1/2 x 8 1/4 x 8 1/4". Push lever for gum vendor absent. With lock and key.

400/600

150. **Poker Five-Reel 5 Cent Trade Stimulator and Gum Vendor.** Black cabinet with cast and painted metal front. 12 x 14 x 10 1/2". Working. Lacks marquee. With lock and keys.

500/750

151. **Margaret Burnham's Candy Bars Trade Stimulator.** A tin litho trade stimulator similar to a Fairest Wheel. Dropping in a nickel causes wheel to spin, which determines the number of candy bars the player wins. Height 11". Crack to glass on reverse, scratches, but otherwise good.

100/200

152. **AMC "Little Casino" Trade Stimulator Cabinet.** Amusement Machine Co. (attributed to), late 19th/early 20th century. Wooden cabinet with brass castings to sides and front, beveled glass insert in metal frame. 20 x 15 x 7 1/2". A complete machine would have had a peg board which a coin cascaded through into one of several pockets, determining the prize a customer wins. Long crack to arched portion of cabinet; a rare piece well worthy of restoration.

300/500

153. **For Amusement Only Sign.** 20th century. A painted black and yellow steel attraction sign. 2 1/2 x 20 5/8".

100/200

154. **Fairest Wheel Oak Trade Stimulator.** Decatur, IL: Decatur Fairest Wheel Works, ca. 1895 (patent date). Oak trade stimulator, coin-operated, the weight of a nickel causing the wheel to spin. The number on which the wheel stops determines how many cigars the player wins. No lock or cover for coin catch. 24 x 18".

800/1,200

155. **Drobisch Bros. Coin-Operated Cigar Trade Stimulator.** Circa 1897 (patent date). Wooden trade stimulator, inserting a coin causing the dial to spin to the number of cigars you win. Lower display area reverse-painted for Barnes, Smith & Co. (New York/Binghamton). Height 19 1/4". Mirrored back. With key. Several pieces of molding detached, some loosely retained.

800/1,200



156



160



161



162



163



165



166



157

156. Mikro-Call Coin-Operated Dice Shaker Stimulator. Circa 1930s. Metal case with wood veneer, rounded glass dome, green felt surface. Lacking on this example is the microphone, which would be attached to the body; speaking into the microphone after inserting the coin would cause the dice to shake. 12 x 9 x 9". Original decal on side heavily rubbed. With keys. Rare; one of only a few known examples.

500/800

157. Coin-Operated Wheel of Fortune Machine. Early 20th century countertop machine, painted metal and wooden cabinet with glass front. Insert a coin at top and the wheel spins to one of the color labels bearing your fortune or a piece of advice. 17 x 18 x 4 1/4". No key.

250/350

158. Boyce Coin Machine Co. 1 Cent Wee Gee Fortune-Teller Machine. Tuckahoe, NY, ca. 1925. Wall-mount penny arcade machine, painted metal case with cast metal front. Drop the coin in and it will answer one of the questions posed at the top "yes" or "no." 17 1/2 x 7 1/2 x 2". Stamped number 383 on the maker's plaque. No key. Tiny nick to glass pane at right edge.

700/900

159. Victor Baseball 1 Cent Gumball Pinball Machine. Put a penny in machine, turn handle and gumball vends to playfield. Pull lever and attempt to hit a homerun. 19 x 9 x 20". Working, with key.

400/500

160. Coast Vendors Inc. 1 Cent Vending Machine Baseball Game. 1950s. One-cent machine dispenses a gumball while incorporating a flip-game to score a hit or home run. Height 15 1/2". Working with key.

300/400

161. Football Game 1 Cent Gumball Machine. Coast Vendors Inc., ca. 1958. Sheet metal and aluminum. Height 15". A few scratches, otherwise very good. Key. Working.

300/400



158



159

162. Neko Bulk Vendor. National Co., ca. 1935. Green metal case in the Art Deco style. Height 10 1/2". No key.

350/500

163. Robert Burns Cigarillo Cigar Vendor. 25-cent cigar vending machine with sheet metal case. Height 30". Good working condition with key.

300/400

164. Dun Cigar Coin Operated Dispenser. Countertop ten-cent vending machine. Old lettering to side panels and glass lid. Cigars are dispensed on a gravity-fed principle. No key. Length 15". Original unrestored condition.

800/1,600

165. Victor Vending 1 Cent Topper Gumball Vendor. Chicago, ca. 1950. With the view window, a short-lived feature, as customers were less likely to buy if their favorite flavor was not visible through it. The machines were also outlawed in many areas as a gambling device (bets were sometimes placed on the next color to appear in the window). Height 17". Working.

200/300

166. Atlas Master 1 and 5 Cent Gumball Machine. Circa 1951. Square glass globe vending machine, with two-color decal. 18 x 7 x 7". Working, with key.

150/300

167. Advance Machine Co. Football Globe Peanut Vendor. Chicago, 1920s. One-cent machine with wall mount bracket, lock, and key. Height 16". Repainted.

250/350



164



167



180

181

182

183

188

189

191

192



184

185

186

187



190



193

180. **Ford Gum 1 Cent Gum Ball Machine.** Ford Gum & Machine Co., ca. 1950s. Metal base retains manufacturer's plaque, coin slot numbered "232632." With Ford Gum decal. With lock and key. Height 10 ½".

50/100

181. **Ford Gum 1 Cent Gum Ball Machine.** Ford Gum & Machine Co., ca. 1950s. Metal base retains manufacturer's plaque, coin slot numbered "19483." With Ford and Lions Club (Piqua, OH) decals. With lock and key. Height 10 ½".

50/100

182. **Regal Products 1 Cent Gum Ball Machine.** Circa 1930s. Countertop gumball machine, metal base with original red crackle paint; unrestored except for a replaced lock and key (included). Height 12".

80/125

183. **Sel-Mor 1 Cent Confections Vending Machine.** Heavy cast iron base. Restored. Height 13 ½". With lock and key.

250/350

184. **Silver King 1 Cent Confections Vending Machine.** Circa 1940s. Red cast iron base. Dispenser cover lettered "Silver King." Height 14". Some restoration including replaced decal.

125/225

185. **Roosevelt "Rough Riders" 5 Cent Pencil Dispenser.** Wooden dispenser cabinet with acrylic Roosevelt signs to three sides, A.B.T coin mechanism patented 1933. Lock, no key. 13 x 11 x 11". Chipped lid, cabinet worn and scratched but sturdy.

200/300

186. **Bulls Eye Coin-Drop Skill Game.** Countertop game, painted wooden cabinet and game field with metal pegs. Player attempts to drop coin in the bulls-eye to win a prize. 17 ¼ x 8 ¼ x 7". Newer lock and key to back door, otherwise unrestored.

100/150

187. **Magee-Hale Park-O-Meter Parking Meter.** Circa 1950s. Two-hour limit meter, accepts pennies, nickels, dimes, and quarters. Height 22". No keys.

50/100

188. **Northern Electric Coin-Operated Pay Phone.** Rotary dial with nickel, dime, and quarter slots. Marked by Northern Electric/Made in Canada below coin return. Height 18 ½". With two keys.

200/300

189. **25 Cent Metal Pay Box / Acceptor.** Plain metal pay box with rejecter tray, nickeled decorative coin slot. Height 13". Lock, no key.

30/50

190. **Coca-Cola Coin Changer.** Kansas City: The Vendo Company, 1950s. Machine dispenses change for nickels, quarters, or dimes. 15 x 11". Working. Lacks key (but unlocked).

700/900

191. **Madam X 1 Cent Napkin Holder & Fortune Dispenser.** Circa 1940. One-cent coin-operated machine will answer any question by dispensing fortune cards. Original lock, no key. Height 6 ½". Working.

100/200

192. **Gillette Razors Coin-Operated Dispenser.** Wall-mount metal dispenser, accepting half-dollar U.S. coins for a pack of ten razors. 19 x 5 x 3 ½". Decal peeling at top, some scratching to cabinet. With lock and keys.

50/150

193. **Andrews & Co. "Variety Shops" Five Column Bulk Vendor.** Chicago, ca. 1950s. Five-column one cent vendor on stand. 48 ½ x 18 x 7". On stand. No lock or keys.

250/350



195



196



197



198



199



194

194. **French Boy Popcorn Warmer and Dispenser.** Chicago: A.B.C. Popcorn Co., 1960s. Model-C Little Giant Popcorn Dispenser, being an attractive mid-century countertop popcorn dispenser with hand-painted "French Boy" chef and text on front and rear panels. Height 28". Hole in roof.

200/400

195. **Vendex 25 Cent DuPont Toothbrush Vendor.** Model No. TB31. Wall-mount toothbrush vendor, sheet metal case with embossed and applied lettering. 31 x 8 x 4 1/2". No key.

125/225

196. **FEMS Sanitary Napkin Coin-Operated Vending Machine.** Wall-mount vendor by Hospital Specialty Co. (Cleveland), with porcelain finish. Height 32". Lock, no key.

125/225

197. **Master Prophylactic Vending Machine.** Columbus: Norris Manufacturing, ca. 1920s. Ten-cent coin operated machine of cast aluminum dispenses condoms Height 20". Working, with keys.

1,500/1,800

198. **Wall-Mount Condom Vending Machine.** All-metal prophylactic vending machine. 75 cents per turn. Height 30". With key; lock not working.

100/200

199. **Coin-Operated Bathroom Stall Lock.** Pawtucket, RI: American Coin Lock Co., ca. 1940s. Ten-cent door lock mechanism with instruction placard, "occupied" lettered on dial. Affixed to later metal backing painted purple. Height 14 1/2". Locks, no key.

100/200



200



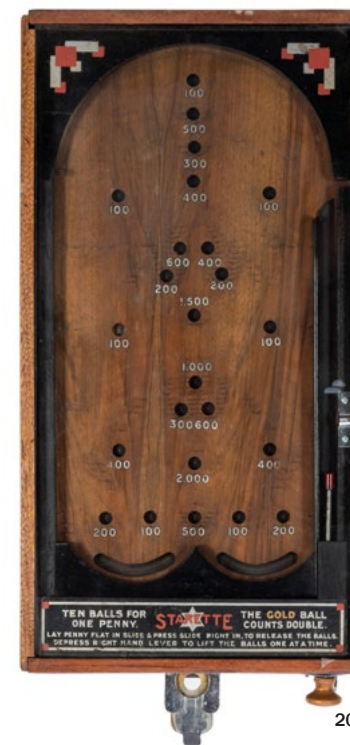
202



203



204



205



206

200. **Coin-Operated Toilet Seat Cover Vendor.** Los Angeles: Cumett Mfg. Co., 1926 (patent date). Metal box with paper label. 1 Cent would vend a sanitary toilet seat cover. 9 x 7 1/4 x 4 1/4". Label and box worn and stained.

80/150

201. No lot.

202. **Shipman U.S. Postage Stamps Coin-Operated Vending Machine.** Mid-20th century. Heavy countertop vendor, having a porcelain cast iron front which would vend stamps for 10 or 25 cents. Height 16". Lock, no key.

100/200

203. **U.S. Postage Stamps Coin-Operated Vending Machine.** Mid-20th century. Sheet metal cabinet with wooden base, coin-operated to dispense 10 and 25 cents in stamps. Lock, no key. Height 15 1/4".

50/100

204. **Diamond Mfg. Fare Box.** Modern metal fare box with glass sides. 17 x 5 1/2 x 4 1/4". With one key. Glass scratched.

50/100

205. **Starette Countertop Pinball Arcade Machine.** English, early 20th century. An English penny releases ten balls, which the player tries to shoot into holes on the playfield for the highest possible score. 24 x 12 1/2 x 7". With two keys.

300/400

206. **Top Dog Coin-Operated Dice Game.** A 25 cent countertop dice game, "for amusement only," with painted glass cover, in which the sum of five dice determines how high you score. South Carolina amusement sticker on side. 15 x 11 x 7". No key.

200/300



207



209



208



210



211

207. Williams "Ringer" Horseshoe Arcade Game. 1970s. Electromechanical arcade game, coin-operated, with painted wooden cabinet with glass playfield. Players attempt to spin the wheel to throw horseshoes and score points based on the skill of their throws. Height 65".

200/400

208. H.C. Evans Horse Race / Derby Arcade Game. Circa 1970s. Electromechanical arcade game in painted pinball-type cabinet, coin-operated. 64 x 40 x 23". Glass cracked. For parts or restoration. Sold as is. Evans label on inside.

200/400

209. J.P. Seeburg Grand National Mechanical Payout Horse Race Slot Machine Prototype. 1930s. Five cent arcade machine. Insert a nickel and pull the lever to cause the horse race to begin. Selector allows player to wager on a certain horse or color. Payout tray. 17 x 28 x 14". Working.

1,000/2,000

210. Public Scale Co. 1 Cent "What You Should Weigh" Scale. Circa 1930s. Includes a reference chart with the average weights of men, women, and children with their corresponding heights. Height 74". Glass cracked, rear panel missing, surface scratches to paint. Sold as is.

100/150

211. Peerless Coin Operated Ticket Scale. New York: Peerless Weighing and Vending Machine Corp., ca. 1920s. Customer stands on scale and is provided with their weight, printed on the back of a Hollywood movie star picture. Height 64 1/2". Few chips to surface, uneven discoloration to mirror; with keys and locks; repainted.

150/250



168



169



170



171



172



173

168. Model D Pix Version 1 Cent Match Machine. Chicago: Albert Pick & Co. Wooden case with metal and glass façade. Height 14". Working, with key.

500/750

169. Simpson Model A 1 Cent Vending Machine. One-cent vending machine with cast iron base. Height 14 1/2". With lock and keys. Working condition.

900/1,200

170. Vendex Fishbowl Gumball Vendor. Boston, ca. 1935. One cent machine with cast iron base. Height 13". Working.

300/400

171. Premier Card Vendor. Oak Manufacturing. Each penny inserted vends a collectible card and gumball. Height 12 1/2". Working, with key.

500/700

172. Silver King Hot Nut Vendor. Aurora, IL, ca. 1950. Five-cent machine. Includes light-up top with heater. Height 16". Original decal. Working, with key.

350/700

173. National Mfg. Magna Vendor Peanut Machine. Cedar Rapids, 1930s. Polished aluminum eight-sided base, stamped serial number below dispenser, 4962. Sixteen-sided globe. Height 15". Lock and key. Working.

500/750



174



175



176



177



178



179



212



213



214



215



216

174. **Aspro Aspirin Tablet Coin-Operated Dispenser.** Weybridge: Self-Serve Automatic Machine Co., ca. 1960s. With three slots to insert a sixpence coin and dispense an aspirin tablet, labels applied to each column, black lettering. 14 x 6 x 4". Heavy pitting to right side.

400/600

175. **Regal Nut Machine.** Five-cent vending machine. Original decal, globe, and key. Height 12". Working. Scattered paint touch-ups.

150/250

176. **Zeno Gum Vending Machine.** Chicago: Zeno Mfg., ca. 1904. Clockwork mechanism. Wooden case with advertising text on side panels. Height 16". Working with keys (including wind-up key).

1,000/1,500

177. **Ad-Lee Novelty Co. 5 Cent E-Z Gumball Vendor.** Chicago, ca. 1908. Columbus Vending made these machines for Ad-Lee. Cast iron base (serial number 108A) and lid. Copper-tone paint. Globe with embossed Columbus star logo. Height 14 1/4". No lock or key.

500/700

178. **Bluebird Peerless Coin-Operated Vendor.** Circa 1910s/20s. Rare and early candy or nut vendor, having metal grille over glass panes. 16 1/4 x 7 1/2 x 8 1/4". Heavily pitted and dirty; sold as is. Without lock or key.

400/600

179. **Eppy "Charmy" Gum Ball 1 Cent Vending Machine.** Eppy, ca. 1950s. Sheet metal base, red with white streaks, original plastic flared globe retains partial original decal. 18 x 7 x 7". No key.

100/200

212. **Watling Coin-Operated 1 Cent "Question and Answer" Scale.** Arcade scale, with porcelain and cast iron parts, the top of the scale showing your weight as well as the answer to a question on a rotating dial. Sign on the front asks "Have you gained or lost weight?" Height 51". Working. Lock and key.

200/400

213. **Watling Coin-Operated 1 Cent Scale.** Arcade scale, with white porcelain finish on cast iron, decals to front glass, and height and weight chart on top. Cast brass "parcel hanger" and coin slot. Height 48". Lock and keys.

200/400

214. **Columbia Weighing Machine 1 Cent Scale.** Insert a penny and find out your weight. Height 70". Lacking rear paneling. Unrestored, sold as is.

100/150

215. **DeMoulin Bros. Lung Tester Device.** Greenville: Ed De Moulin & Bro., ca. 1900. Fraternal order initiation device, in which the inductee blows into the tester to measure his lung capacity to his brothers, only to have black soot or corn starch blow back in his face. At the same time, a blank cartridge explodes inside the device. Paper-covered wooden box with internal metal mechanism and fixtures. Height 17 3/4". Covering weathered and torn in spots, portion of dial deteriorated. Not tested.

800/1,200

216. **Miracle Clock Countertop Lighted Gambling Device.** Sheet metal case, plastic dial and spinner, lettered "Good Any Time." Every minute, the dial automatically spins, and customers could bet on which number would be pointed to. 11 x 13 x 5". On-off switch. Working. Cracks and chips to edge.

100/200



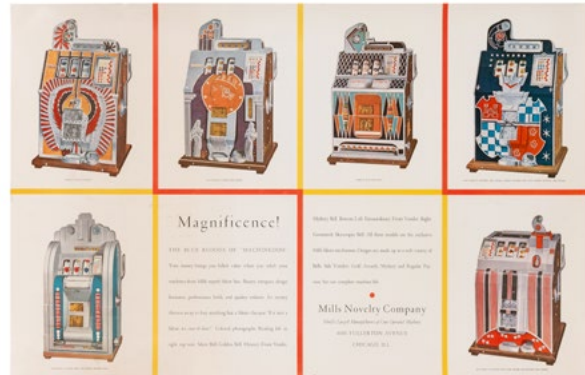
217



221



222



218

217. "Pitch A Coin" Lighted Bar Toss Game. Circa 1940s. Molded plastic toss game in which players try to land coins in the goblet. Height 18". Some surface wear, a little splitting, but very good overall. Working.

80/125

218. Mills Novelty Slot Machines Poster. 1940s. Color poster advertising Mills' line of slot machines. 22 x 34". Rolled. With: a Sicking Mfg. Co. double-sided poster, 23 x 28 3/4" [damp-soiled heavily].

50/100



219

219. [Mutoscope Cards] Lot of Over 200 Pinup Girl Mutoscope Cards. Brown & Bigelow, ca. 1940s. Lithographed cards of various pinup girls. [Together with:] The Varga Girl "esky-card" set (No. 1) in original printed envelope. 5 1/2 x 3 1/4". Overall, very good.

300/600

220. [Pinup] Over 150 Pinup Girl Matchbook Covers. Circa 1940s. Each printed with a lithographed image of a pinup girl on one side and an advertisement on the other. 4 1/2 x 1 1/2". Generally, very good.

200/300



220

221. Box of Mutoscope Cards - The Beatles and Other Music Stars. 1960s. Box of approximately 200 Mutoscope vending cards featuring music and entertainment stars, including The Beatles, Elvis Presley, Barbara Streisand, The Four Seasons, Johnny Cash, The Byrds, The Rolling Stones, Sonny and Cher, The Young Rascals, The Beach Boys, Connie Francis, The Supremes, and many others. Includes duplication. Majority in near fine condition.

60/90

222. Box of Fortune-Telling Mutoscope Cards. 1939. Box of approximately 200 Mutoscope vending cards with fortunes for ladies. Includes duplication. Majority near fine condition.

60/90

CASINO



GAMING CLUBS RENO NEV.



223



225



224

223. Nevada Club Casino Neon Sign. A very large and impressive mid-century double-sided neon sign from Reno's Nevada Club casino. Red, blue, and cream lettering: Nevada Club / Gaming - Bar - Fine Food. Neon to one side only. Size approximately 144 x 24 x 9 1/2". Includes transformer and mounting hardware. Not tested, but removed from an indoor working environment. Sold with an enlarged Reno street scene photograph showing the piece in situ. Wonderful piece of old Nevada neon.

3,000/5,000

224. Harold's Club Casino Blackjack Table with Chairs. Original blackjack table from the casino, with green felt top, accompanied by seven black vinyl stools (not original to the table). Table includes metal chip rack, money slot and cash box, foot rest bar, and black vinyl elbow rest.

300/500

225. Harold's Club "Covered Wagon Room" Bar Stools. Circa 1940s. Seven chairs total, including five bar stools (height 46") and two chairs (height 34"). Wooden legs and "wagon wheel" ornaments with leather coverings resembling a covered wagon. Upholstery cracking and worn, one wheel ornament detached. Accompanied by a photograph postcard depicting the chairs in the Covered Wagon Room.

300/600



226



227



228



229



230



231

226. Mills "The Nugget" High Top 10 Cent Slot Machine. Height 26". With key. Working.

800/1,200

227. Mills "The Nugget" High Top 5 Cent Slot Machine. Height 26". With key.

800/1,200

228. Mills "Horseshoe" High Top 25 Cent Slot Machine. Height 26". With key.

800/1,200

229. Mills South Tahoe Casino 5 Cent High Top Slot Machine. Height 26". With key.

800/1,200

230. Mills 10 Cent Commercial Hotel Slot Machine. Height 20" (exclusive of topper). Cracks to acrylic topper. With key.

300/500

231. Cal-Neva 25 Cent Slot Machine on Stand. Circa 1960s. Double-reel or "piggyback" slot machine from the Reno casino, attached to stand with locking door. Height 62". With keys.

300/500



233



234



235



236



232

232. Mapes Money Tree \$1 Slot Machine on Stand. Slot machine by Jennings from Mapes (Reno), attached to stand. Height 59". Not powering on.

200/400

233. Mapes Hotel and Casino Reno Original Concept Art. Ad-Art, ca. 1960s. Original watercolor and graphite artist's rendering of the Mapes Hotel and Casino, a corner view depicting signage, parked cars, and tourists. Agency credit to lower right. Heavy wooden frame, 32 x 41".

300/500

234. Harvey's Wagon Wheel Resort Hotel 10 Cent Slot Machine. Height 22". With keys.

300/500

235. Harvey's Wagon Wheel Casino \$1 Double Slot Machine. 20 x 24 x 14 1/2". With key.

400/600

236. Harvey's Wagon Wheel Casino \$1 Slot Machine. Height 20". With keys.

300/500



237



238



239



240



241



242

237. Harvey's Wagon Wheel 10 Cent Slot Machine. Height 20". With key.

300/500

238. Mills Bell-O-Matic 5 Cent Slot Machine on Stand. Serial number 602658 impressed in wooden base and label internally. On swiveling stand. Height 50". Includes keys.

400/800

239. Harrah's 10 Cent Casino Pace Slot Machine. Height 20". With key.

600/900

240. Harrah's 25 Cent Casino Pace Slot Machine. Height 20". With keys.

600/900

241. Harrah's 5 Cent Casino Slot Machine. Height 20". With key.

300/500

242. Harrah's \$5 Token Pace Slot Machine. Accepts \$5 gaming tokens issued by the casino (not supplied). Height 20". With keys.

300/500



243



244



245



246



247



248



249



250



251



252



253



254

243. Harrah's 5 Cent Casino Slot Machine. 1960s (Ainsworth label on side dated 1963). Working, but lacking keys. 22 x 15 x 14".

300/600

244. Harrah's 25 Cent Casino Slot Machine. Height 22". Working. With keys.

300/500

245. Harrah's 5 Cent Casino Slot Machine. Height 22". Lacks keys.

300/500

246. Harrah's \$1 Pace Casino Slot Machine. Height 20". With key.

300/500

247. Harrah's Casino Lighted Sign. Original vintage lighted sign, sheet metal on wood, from the casino (probably its Tahoe location), 17 x 43 1/2". Complex uncovered network of hard wires on back; not tested.

200/300

248. Harrah's Reno / Lake Tahoe "Charter Special Express" Bus Sign. 1960. Black vinyl scrolling sign with blue Harrah's logo at top, over 20 feet long, 39" wide, to be displayed on Harrah's chartered buses and listing numerous bus stops across Washington, Utah, Montana, California, Nevada, Arizona, New Mexico, Texas, and as far east as Chicago. Marked by Greyhound and dated 1960.

100/200

249. Horseshoe Club Reno 5 Cent Casino Slot Machine. 1960s. Height 20". Working. Includes keys.

300/500

250. Horseshoe Club 5 Cent Pace Slot Machine. Height 20". With key.

400/600

251. Horseshoe Club Reno 10 Cent Slot Machine. Height 22". With keys.

300/500

252. Primadonna Casino Reno 5 Cent Pace Slot Machine. 1960s. Height 21". Working. Includes keys.

300/500

253. Silver Slipper Casino 5 Cent Mills High Top Slot Machine. 1950s/60s. Height 26". Working. With key.

400/600

254. Eddie's Fabulous 50s 5 Cent Casino Slot Machine. Height 21". With key.

300/500



255



256



257



261



262



263



258



259



260



264



265



266

255. Sparks Nugget 5 Cent Casino Slot Machine. With a small Sparks identification label inside, dated 1962. Height 20". With key.

250/350

256. Overland Casino 25 Cent Pace Slot Machine. Height 21". With keys.

250/350

257. Overland Casino 5 Cent Slot Machine. Height 22". With key.

300/500

258. Overland Casino \$1 Pace Slot Machine. Height 25". With key.

400/600

259. Jennings Chief "New China Club" 5 Cent Slot Machine. Height 26". With key.

800/1,200

260. Sahara Tahoe Casino 5 Cent Slot Machine. Mills, ca. 1960s. Height 21". Includes keys.

300/500

261. Harold's Club 50 Cent Casino Slot Machine. Height 22". With key.

300/500

262. Harold's Club \$1 Casino Slot Machine. Circa 1970s. Height 25". Includes keys.

300/500

263. Harold's Club 10 Cent Pace Slot Machine. Height 20". With key. Working.

500/700

264. Harold's Club 5 Cent Casino Slot Machine. Height 20". With key.

300/500

265. Harold's Club 5 Cent Slot Machine. Height 21". With key.

300/500

266. Harold's Club Casino Slot Machine. Height 24". Includes key. Denomination not stated, but coin entry for \$1 Eisenhower coin.

300/500



267



268



269



271



270



272



273



274



276



277

278

267. Harold's Club 50 Cent Casino Slot Machine. Height 25".
With key.

300/500

268. Harold's Club \$1 Casino Slot Machine. Height 25".
With key.

300/500

269. Harold's Club "Reno's Hot Slots" Sign. Vintage large
wooden sign, 24 x 84". Unobtrusive scratches, splinters, and
scrapes.

200/300

270. Vintage Casino Signs on Cage Door. Faux security
cage door which incorporates a vintage Harrah's wooden
sign; a cast metal Nevada age requirement sign for gaming
establishments; and Copa Lounge doorknob. 72 x 28". While
imposing in appearance, the door is actually lightweight and
was assembled as a decorative piece.

100/200

271. Mapes and Money Tree Casino Personnel Sign. Vintage
Masonite sign with directional arrow for casino personnel to
Suite 411. 22 x 33 1/2". Some loss to lettering.

50/100

272. Harvey's Lake Tahoe Large Bicentennial Display Chip.
1976. Patriotic particle board display sign in the form of a
casino chip. 15 3/4" diam. Scuffs and slight discoloration, a few
bumps at edges.

50/100

273. Large Floor-Standing Keno Cage Machine. American, mid-
20th century. Large wire cage housed in an electric motorized
metal stand painted teal. 38 x 25 x 23". With a quantity of
Hayes Armor Brand balls.

200/300

274. Large Floor-Standing Keno Blower Machine. Nevada:
Tripp Plastics, ca. 1980s[?]. Keno machine with electric
"blower" system, having a glass cage and a number of plastic
chute attachments by Tripp. 69 x 19 x 19".

200/300

275. No lot.

276. Keno Cage with Balls and T.R. King Stand. American, mid-
20th century. Sturdy metal cage with supports accompanied
by hardware to secure to a base (not supplied). Includes a
quantity of keno balls. Cage diam. 15". Height 19". With a well-
made wooden ball stand with T.R. King (Los Angeles) decal.

100/200

277. Harrah's Club Reno Casino Thermometer. 1950s/60s.
Advertising thermometer from the casino, cream and blue dial,
red metal pointer, within metal frame and rounded glass cover.
Diam. 12". Some paint peeling around edges.

100/200

278. Harrah's Club Reno Casino Thermometer. Having a sheet
metal case, glass cover, and blue and white dial. 12" diam.
Pitting and rust to dial and back of case.

100/200



279



280



281



282



286



283



284



287



285



288



289

279. Carson City Nugget Casino Thermometer. Having a sheet metal case, glass cover, and graphic dial. 10" diam. Oxidation and paint loss edges.

100/200

280. Wagon Wheel Saloon and Gambling Hall Thermometer. Having a sheet metal case, glass cover, and graphic dial. 12" diam. Rusted and with slight paint loss.

125/225

281. Wagon Wheel Saloon and Gambling Hall Thermometer. Having a sheet metal case, glass cover, and graphic dial. 12" diam. Soiling along bottom edge, case oxidized.

125/225

282. Wagon Wheel Saloon and Gambling Hall Thermometer. Having a sheet metal case, glass cover, and graphic dial. 12" diam. Spots of discoloration to edge of dial.

125/225

283. Miss Lucy's Gambling Hall and Saloon Employee Parking Sign. Las Vegas, ca. 1990s. Metal parking sign, white with red lettering and central logo of Miss Lucy. 24 x 18". One sided.

100/200

284. Harrah's Casino Craps Layout and Aprons. Green cloth layout (53 x 25"), stained; and two Harrah's server/dealer black aprons.

100/200

285. Obsolete Harrah's Reno / Lake Tahoe Casino Chips in Locking Case. 1980s. Over 900 Harrah's chips with brass cores, colors and denominations including approximately 600 \$1 (yellow), 84 \$2.50 (green), 187 \$5 (red), 58 \$25 (black), and two of the especially desirable \$100 (white). Presented in an original, exceedingly heavy locking brass tray with gilt lettering on the glass. 22 3/4 x 12 x 3 1/2".

1,000/2,000

286. Massive Harold's Club Casino Chip Collection. Over 600 obsolete Harold's Club clay chips in a metal chip rack filled with \$1 (pink), \$5 (purple), \$25 (beige), and \$100 (tan) denominations. Includes two versions of the \$5 chip. Rack by Reno Sheet Metal Works (plaque on side).

500/700

287. Harold's Club Casino Chip Collection. Group of over 550 obsolete clay casino chips in plastic and wooden racks, comprising approximately 40 \$1 pink chips; 370 \$5 purple chips; 100 \$20 green chips; and 63 \$100 tan chips. A portion, likely a majority, of the chips are drilled, otherwise very good overall.

300/500

288. Group of Casino Table Signs. Likely Reno/Tahoe, ca. 1970s. Including Harrah's \$5 Token sign; Harold's Club "Reserved" seat sign; and three blackjack limit/dealer signs. Largest 13 x 5 1/2".

50/100

289. Nevada Ash Tray Collection. Casinos, Motels, Lodges, Hotels. Principally Nevada, mid-20th Century. Approximately 50 glass advertising ash trays, including Owl Motel (Battle Mountain, NV), Nevada Lodge, Commercial Hotel (Elko), North Shore Club Hotel, Ponderosa Hotel, Frontier Motel (Carson City), Harvey's Wagon Wheel, MGM Grand, Reno Cal-Neva, Crystal Bay Club, Palace Club, Strawberry Lodge (Kyburz, CA), Harrah's Club, Claim Stake Casino, Sahara Tahoe, Carson City Nugget, Mapes Motor Hotel, and others. Several scarce pieces. Generally very good condition.

50/150



290



291



292



293



294



295



296



297

290. Harrah's Ash Tray and Memorabilia Collection. Includes an original box of NOS glass ash trays; an additional 24 glass ash trays; metal ash tray; set of 4 brass and leather coasters in wooden display box; two "I Hit the Jackpot" souvenir enameled brass bells; an embossed metal plate to stamp the Harrah's logo; and a colored glass tray.

80/150

291. Wicks, Ren (1911-1998). Harold's Club Pinup Calendars. 1965, 1966, 1969. Three calendars, all with illustrations by Wicks, comprising: 1965, seven pinups plus title page, compound; 18 1/2 x 13"; 1966 seven pinups plus title page, 18 1/2 x 13" [surface tears upper right of each pinup]; and 1969, four pinups: Anna Held, Lily Langtry, Jenny Lind, and Lotta Crabtree, 20 1/4 x 26".

200/300

292. Harold's Club Pinup Calendars. Reno, ca. 1950s. Designed by Bill Layne and Gil Elvgren, tipped to Harold's Club cards which list the owners and touts "over 5,000 visitors daily." Both approx. 15 1/8 x 12 1/4". Calendar pads removed. Edgewear, creases, some staining not affecting illustrations.

100/200

293. Harold's Club Pinup Calendars. Reno, 1945/63. Size 17 x 10 3/4" (1945 calendar; spotting to image); and 15 x 10 3/4" (1963 calendar, design by Mel Mathewson).

100/200

294. Harold's Club / Nevada Pinup Calendars. Lot of 5. Including Harold's Club 1965 ("Alluring" color pinup); McGill Club 1971 (guitar over-layer; sunned); Harold's Opera House 1961 (spotted); and Harold's Club 1963 (designed by Mathewson; two copies, one defective).

100/200



298



299

295. Harold's Club Pinup Calendar by Earl Moran. 1945. Pin-up illustration titled "Starlight" designed by Moran, on Harold's Club backing with full pad for 1945. Very good condition with small pinholes and minor creases in corners.

100/200

296. Walt Otto Pinup Calendar. Nevada Turf Club and Bar. 1951. Pin-up illustration titled "Corral Cuties," for the Reno betting book for horseraces, sports, and elections. Full calendar pad attached. 15 1/2 x 9 1/2". Tear in upper margin touching top part of image, otherwise very good.

100/200

297. Bank Club & Bar (Reno) Casino Pin-Up Calendar. Reno, 1945. Pin-up calendar for the Reno casino, bearing Zoe Mozart's "The Enchantress." Partial calendar pad (May-Dec.). 33 x 16". Tears and creases, some losses. Fair. Sold with a Pick Hobson's Overland Hotel "1919 Golden Girl" calendar (ca. 1970s).

50/100

298. Harold's Club Reno Dealer Apron. Circa 1950s. Heavy-duty green cloth apron with bright yellow lettering, and three pouches. Apron area 20 x 14 1/2". Some fraying and light stains.

100/200

299. Harold's Club / Casino Whiskey Decanters and Figural Pieces. Lot of 11. Including 1958 Regal China Harold's Club man in barrel [2], height 14 1/2"; chalkware Harold's Club statues of man in barrel [2]; wagon scene decanters [2]; slot machine decanters [3]; Harrah's Lake Tahoe rotating music box. Some paint losses, hairlines, and broken corks, but overall very good.

200/300

For a time, Harold's Club advertised a man covering himself with only a barrel, with the slogan: "You may lose your pants, but you're sure to have a barrel of fun at Harold's Club."



300



304



305



306



301

300. **Harold's Club 1 Gallon Whiskey Bottles. Lot of 8.** Reno, ca. 1970s. Clear glass one-gallon six-year whiskey bottles from the casino, from Medley Distilling Company (Owensboro, KY). 18 1/2 x 5 1/2 x 5 1/2". Red and white graphics, embossed lettering. Two with dispensers, several with corks. Very good. Also with a wooden crate for Harold's Club whiskey.

100/200

301. **Harold's Club Whiskey Bottles. Lot of 12.** Reno, ca. 1960s/70s. Clear glass whiskey bottles with Harold's Club logos, all but one with cap, and one with pourer insert. Tallest 15".

100/200



302

302. **Harold's Club Restaurant Ware Collection.** Circa 1970s. Twenty-two pieces by Tepco (USA) for Harold's Club Reno, with the casino's graphic on each piece, comprising: dinner plates (2), salad plates (6), saucers (4), side dish (1), condiment bowl (1), soup cup (1), salt and pepper (set), mug (1), teapot (2; different shapes), creamers (2), and covered sugar. Also with: four Harold's Club buffet trays (marked Cambro Manufacturing, 10-78), and two dinner plates by Russel Wright for Harold's Club, one chipped at edge.

125/225



303

303. **Assorted Nevada Casino Dishware and Service.** Collection of vintage metal, ceramic, and porcelain pieces, including (10) Harrah's Tahoe Hotel Grand Opening plates (12"); (4) Harrah's Club Reno gilt porcelain plates (10 1/4"); Harrah's 50th Anniversary crystal tray (8"); Sonoma Inn shallow bowl (4 3/4"); Harold's Club large metal serving tray (16 x 21"); Harrah's Headliner Room Reno New Year 1971 footed banquet dish (7 x 5 1/2"); Aladdin Las Vegas souvenir brass lamp; and (9) souvenir calendar ashtrays (1960s).

100/200

304. **Harold's Club Casino Blankets. Lot of 5.** Fleece blankets with Harold's Club graphics. Three blue, two crimson. Size approx. 72 x 68".

100/200



307



308

305. **Harold's Club / Casino License Plate Toppers.** Group of four metal toppers, including Harold's Club (2); Harrah's Club; and Nevada Centennial (1964). Largest 14 x 8 1/2".

100/200

306. **Harold's Club Reno Menus, Calendars, and Ephemera.** Reno, 1950s/90s. Including an Employee Handbook (1970s); restaurant menus (3); comb-bound desk calendars (4); gaming guides to keno, slot machines, and the Covered Wagon Room; collection of company magazines Harold's Herald and Harold's Magazine (1960s/80s); and other pieces in quantity, such as a box of unused company letterhead and stacks of two different designs of paper placemats.

150/250

307. **Harold's Club Casino Sign Collection.** Group of 15 original Harold's Club acrylic slot machine signs and other signage, including an acrylic sign warning patrons to gamble "only what they can afford to lose"; and a folding windshield screen. Size of largest 12 x 12".

200/300

308. **Harold's Club Casino Playing Cards.** Three vintage double-deck sets, one with color photo backs of Harold's Club entrance and black and white photos of Reno and surrounding area on each card [a few creased cards]; the other two identical, except one set is sealed. All 52 + 2J + OB.

125/225

309. **Lot of Nevada Casino Playing Cards and Dice.** Including 10 sealed Harrah's Reno and Lake Tahoe decks (Bee No. 92; blue USPC seals); sealed Harold's Club Bee No. 92 (blue USPC seal); sealed Mizpah Tonopah, NV (blue USPC seal); five sealed Harold's Club bridge-size souvenir decks; and over 25 other opened decks from various casinos. Dice include four foil-wrapped sets for Boomtown Hotel-Casino (3) and Karl's Silver Club (1); and other loose dice for a variety of casinos including Harvey's, Bally's, Harrah's Club, Cal-Neva, MGM Reno, Bank Club Reno, and Mapes. Some dice chipped and brittle, but overall very good.

125/225



310



311



313



312



314

310. **Archive of Reno and Other Nevada Casinos Photographs.** Mid-late 20th century. Approximately 150 photographs concentrated on casinos of Reno, Lake Tahoe, and other locations in Nevada, and especially focused on Harold's Club. Includes photographs of streets, casino interiors and exteriors, gamblers and patrons, casino owners and managers, employees, gaming tables, slot machines, and many other subjects. Includes a thick binder containing many photographs stamped Harold's Club Reference Library; the balance of the archive consisting primarily of press photos, both contemporary and later prints. Supplemental ephemera such as company letterhead, gaming licenses, and advertisements interspersed in the collection. An extensive accumulation that must be seen. **250/500**

311. **Reno Luggage Labels and Casino Ephemera.** Approximately 20 pieces, including Visit Reno 1939 Pageant of the Pacific luggage label (5 1/4 x 3 3/8") with original wax envelope; Harold's Club luggage label; Reno luggage label with Ace of Hearts design; Harold's Club "Lucky Buck" novelty money (12 pieces); snapshot of Harrah's Club South Shore Room advertisement; a Harold's Club "Revival" morning after hangover kit; and others. **50/100**

312. **Keno Casino Ticket Holders and Related Items Lot.** Box of vintage plastic and acrylic Keno ticket holders from Nevada casinos including Binion's Horseshoe, Desert Inn, Bob Stupak's Vegas World, The Sands, El Rancho, and Reno's Horseshoe Club, some with crayons and tickets. Also includes a Mapes Keno zippered bag; a stack of Oregon Lottery Keno coasters; box of Eddie's Fabulous 50s crayons; box of Barney's Casino crayons; glass full of Silverbird crayons; and a binder of used keno tickets from various casinos. **200/300**

313. **Box of Club Primadonna "Bingo King" Cards.** 1959. New old stock in original box with labels, contents include stacks of No. 300KK "Kleer-Kwik" cards, includes prospectus. 7 x 14 x 13 1/2". **100/200**

314. **Casino Slot Machine Token/Coin Trays and Others.** Lot of (5) slot machine token trays from Reno casinos; and (6) ceramics including Dick Graves' Nugget salt and pepper shakers; Dick Graves' Nugget figural cups; Harvey's coin bank; and Stockmen's Hotel one-armed bandit figure. **50/100**



315



316



318



317



319

315. **Casino Dealer Aprons. Lot of 10.** Vintage aprons from Las Vegas and Reno casinos, including Binion's Horseshoe Club, Aladdin, Palace Club, Eddie's Fabulous 50s, Cactus Pete's, Harold's Club (2), Club Cal Neva, Jackpot, and Harvey's Wagon Wheel. Sizes vary. Some signs of use and wear including a little light staining. **150/250**

316. **Harrah's Casino Memorabilia Group.** Including a Lucite display of chips (\$2.50, \$5, \$25, and \$100); figural wagon coin bank; embossed ashtray (Made in Japan); and Nevada 79/Harrah's metal belt buckle. **100/200**

317. **Lot of Nevada / Casino Postcards and Snapshots.** 1920s-1980s. Over 50 postcards and snapshots, with an emphasis on Reno and Las Vegas casinos and gambling halls, as well as other locations in Nevada, snapshots of casinos, street views, motels/hotels, restaurants, and others. Includes photo postcards (RPPC), color and black and white Kodak and Polaroid snapshots, and commercially produced souvenir postcards. Overall very good. **100/200**

318. **Lot of Nevada Club / Diamond Jim's Casino Postcards.** Las Vegas, 1950s/70s. Approximately 150 souvenir photo postcards of tourists and patrons of the Nevada Club, Diamond Jim's, and Lady Luck casino, photographed alone or in small groups in the casino, usually by the slot machines, but in a few instances in other areas. Majority not postally used. Neatly organized in individual sleeves. Overall very good. **100/200**

319. **Lot of 18 King's Castle Hotel and Casino Pewter Plates.** Circa 1970s. Marked "RWP"/Wilton-Columbia, PA to underside. Diam. 11". **50/100**



320



323



321



324



322



325

320. Harrah's Casino Calendars, Menus, and Ephemera. 1950s/80s. Box of Harrah's Reno/Lake Tahoe ephemera, including a Western-themed calendars for 1954, 1955, and 1957, one framed; 1959 "Sultan" calendar; 1960 calendar with Winter Olympics theme; 1962 calendar; Room Service menu; South Shore Room menu; 1963 New Year's Eve prix fixe menu; Terrace Room menu; eight issues of employee magazine *Harrah-scope* (1960s); and a stack of approximately 100 blotters advertising entertainers and musicians appearing at the casino. Nice lot with interesting contents that should be seen. Additional images on request.

125/225

321. Casino Pennants, Menus, and Ephemera Collection. Including six vintage felt pennants and patches for Harrah's Club; Harvey's Gun Club; Harold's Club; and Harold's Trapshooting Club; restaurant menus from the Silver Spur/Reno's Horseshoe Club (2) and Tonopah Restaurant and Coffee Shop; a collection over 100 of Harrah's Reno and Lake Tahoe business cards; and a stack of gaming guides and brochures from various Nevada casinos.

200/300

322. North Shore Club Casino Slot Machine Toppers / Signs. Circa 1960s/70s. Including a blue reverse-glass sign (8 x 15"); and four acrylic slot machine signs/toppers (7 1/4 x 12 1/4"). Some expected scratching.

50/150

323. Park Tahoe Glass Restaurant Sign. Tahoe, ca. 1970s. Reverse glass sign advertising The Park Cattle Company 24-hour restaurant. 8 x 15 1/4".

50/100

324. Trio of Casino Slot Machine Toppers. Vintage Masonite/particle board jackpot slot machine signs from the Sonoma Inn, Fremont Casino, and Boulder Club. All approx. 8 x 14".

100/200

325. Collection of Acrylic Slot Machine Jackpot Signs. Bulk 1970s/80s. Clear and colored acrylic slot machine signs, mostly from casinos of Reno and Lake Tahoe, including Cal-Neva, Harrah's, Crystal Bay, Harvey's Wagon Wheel, Sahara Tahoe, and others. Size of largest approx. 14 x 9".

150/250



326



327

326. Chuck A Luck Dice Cage. Nickel-plated brass cage with three large celluloid dice, green felt padding, and bell (non-functioning). Height 15 1/2". Loss of plating on post and some other spots, but overall good vintage condition.

100/200

326A. Group of 8 Punchboards, Some with Pinups. Eight mid-century punchboards between 5 and 50 cents, three with pin-up girl illustrations. Size of largest 16 1/2 x 14". Generally very good.

200/300



326A

327. Mann, Robert (Canadian-American, 1924-2011). *The Card Game*. Circa 1960-65. Oil on canvas painting. A group of six men and women play cards in a parlor. One of the women looks away from the table, the object of her attention unseen. 23 x 33 1/2". Modern frame. Signed lower right. Mann was a skilled self-taught artist whose exhibitions included a solo show at New York's Staempfli Gallery in 1975. The present work was formerly owned by the actor Robert J. Wagner.

300/500

328. Hill Bros. Gambling Supply Catalog No. 36. Salida, CO, ca. 1930s. Printed wrappers. Illustrations of crooked gambling apparatus, playing cards, and others. 40pp. Size 16mo. Sold with H.C. Evans "Club, Park, and Carnival Equipment" catalog (Chicago, ca. 1960s).

125/225



328

329. Ten Collector Books on Slot Machines and Casinos. Historical and reference works on slot machines and casinos, including *Slot Machines* (first and third edns.), Fey; *Reno: Where the Gamblers Go* (1976), Sawyer; *The Rise of the Biggest Little City* (2000), Kling; *A Family Affair: Harold's Club and the Smiths Remembered* (2003), Kling and King; and others. Size 4to. Includes duplicate of one title.

100/200



329

ADVERTISING

Great things

AMOCO

are coming



331



333



330



332



334

330. [Coca-Cola] 1916 Stelad Signs Coca-Cola Serving Tray. A handsomely colored tin tray featuring a woman ("Elaine") holding a glass of Coke. Length 19". Light edgewear along rim, few small scratches to image area.

150/250

331. [Coca-Cola] 1924 and 1925 Coca-Cola Serving Trays. Coshocton, OH: American Art Works, 1924/25. Two lithographed trays each with a woman holding a glass of Coca-Cola. 13 x 10 1/2". Scattered oxidation and scuffing with general chipping mainly at edges.

200/300

332. [Coca-Cola] 1927 Coca-Cola Serving Tray. Coshocton, OH: American Art Works, 1939. Lithographed image of a soda jerk serving glasses of Coca-Cola to the viewer. 13 x 10 1/2". Scuffing and chipping to edges, few small patches of oxidation to lower image.

100/200

333. [Coca-Cola] 1935 and 1936 Coca-Cola Serving Trays. Coshocton, OH: American Art Works, 1939. Lithographed images of women toasting a glass of Coke. 13 x 10 1/2". Chipping along edges, light scuffing overall, else clean.

200/300

334. [Coca-Cola] 1939 Coca-Cola Serving Tray. Coshocton, OH: American Art Works, 1939. Lithographed image of a woman lounging on a diving board at the pool while drinking a Coke. Art by Sundblom. 13 x 10 1/2". Scattered scuffing and oxidizing at edges, few small chips to image and titling.

100/200



335



338



337



336



339



340

335. [Coca-Cola] 1940 Coca-Cola Serving Tray. Coshocton, OH: American Art Works, 1939. Lithographed image of a woman fisherman having a Coke on a dock. 13 x 10 1/2". Few small chips to border, slight oxidation to rear; a bright image. 200/300

336. [Coca-Cola] Four Coca-Cola Serving Trays. Coshocton, OH: American Art Works. Trays include 1920, 1931, 1932, and 1934 ("The Tarzan Tray" featuring Johnny Weissmuller). 13 x 10 1/2". Rust spots and abrasions to images, scattered surface scratches; as is. 100/200

337. [Coca-Cola] Eleven Coca-Cola Serving Trays. Coshocton, OH: American Art Works. Includes six trays from the 1950s and 1960s, plus five reproduction trays from the 1990s. Also with a Coca-Cola "Home Town Run & Festival 1985" leather duffel bag. 13 x 10 1/2". Occasional surface scratches, else very good. 100/200

338. [Coca-Cola] Pair of Coca-Cola Thermometers. 1940s/50s. Embossed die cut metal displaying bottled Coke. Largest height 16". Few surface scratches and soiling to the smaller thermometer, else fine. 300/400

339. [Coca-Cola] Six Coca-Cola Serving Trays. Coshocton, OH: American Art Works. Trays include 1938, 1941, 1942, and 1950, and two from the 1950s/60s. 13 x 10 1/2". Overall chipping and scuffing, mainly at edges. 200/300

340. [Coca-Cola] Five Coca-Cola Serving Trays. Coshocton, OH: American Art Works. Trays include 1937, 1938, 1940, 1942, and circa 1950s. 13 x 10 1/2". Overall chipping and scuffing, mainly at edges. 300/500

341. Coca-Cola American Retro Bottle Cooler. 2003. Model No. RP-7031. Embossed metal in a silver and red paint. 11 x 9 x 12". New in original box. 100/200

342. Coca-Cola Bottle Metal Sign. AM Sign Co., ca. 1940s. New old stock. Height 16 1/2". A fine example. 300/400

343. Coca-Cola Cavalier Carry-Cooler Senior. Chattanooga, ca. 1940s. New old stock, baked enamel on zinc coated steel, included with original prospectus, aluminum food tray, and un-mounted bottle opener. Includes original box. "Holds 24 bottles of Coca-Cola and a generous amount of cracked ice". 17 x 12 x 15". Fine. 300/400

344. Pair of Coca-Cola Coolers. Classic red coolers with embossed lettering, each with handles and bottle openers affixed to the body. Largest 17 x 12 x 15". Occasional surface chipping mostly near or at lid, slight oxidation to smaller cooler handle. 150/250



341



342



343



344



345



349



350



351



352



346

345. Mexican Coca-Cola Westinghouse Junior Ice Cooler. Circa 1940s. Steel body with embossed lettering "Tome Coca-Cola Bien Fria". 25 x 17 x 33". Surface paint well worn; body sound. 200/300

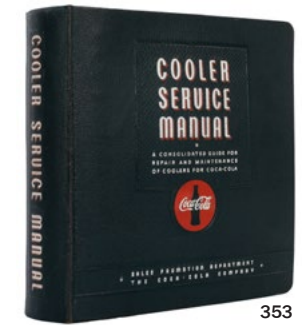
346. Coca-Cola Glascock Salesman Sample Cooler Repro. Authorized reproduction of a painted metal cooler with two hinged doors and two wooden bottle racks. 18 1/2 x 15 1/2 x 11 3/4". Fine. 300/500

347. Coca-Cola Cooler Radio. Chicago: Point of Purchase Displays, ca. 1950s. Backlight turns on, original knobs. 12 x 9 x 7 1/2". Fine. 200/300

348. Old Tyme Coca-Cola Cooler Radio. Randix Industries, ca. 1980s. AM/FM radio with built in cassette player and storage. 12 x 9 x 9". Fine. 50/100

349. Coca-Cola Die Cut Bottle Sign. Coshocton, Ohio: American Art Works, ca. 1930s. Single sided embossed image of a bottle of Coke. Height 38 1/2". Several surfaces scratches and scuffs. 300/500

350. Coca-Cola Folding Wooden Chair. Snyder Chair Co., ca. 1940s. Stenciled with the lettering "Hope Fire Co. Bingo Hall" on the back-seat rest, "Drink Coca-Cola" on the front. Height 35". 100/200



353



355



354

351. Coca-Cola 1920s Leaded Glass Lamp Shade. Original red, green, and white leaded glass panels with metal band twice stamped: "Property of Coca-Cola Company". Includes a modern Art Deco-style lamp base for display (working). Height 12", diameter 16". Few small chips or cracks to glass; a near fine example. 4,000/5,000

352. Coca-Cola PAM Electric Clock. Rochelle, NY: PAM Clock Co. Brass frame, bubble glass face. 15 x 15". Light discoloration to glass, few scuffs to frame. 150/250

353. Coca-Cola Cooler Service Manual. 1958. Original cloth ring binder stamped with Coca-Cola's logo on front board, includes information for Vendo, Vendolator, Westinghouse, and Victor. Height 11" (4to). Contents generally clean. 50/100

354. Coca-Cola Bottle Return Rack. Circa 1940s. Designed for holding four crates of bottles; original decals and lettering on doors reading: "Place empty bottles here". Height 44". Few small surface chips, else very good. Scarce. 300/500

355. Large Coca-Cola Button Sign. Circa 1950s. New old stock enameled steel sign featuring a bottle of Coke. Diameter 36". A fine example. 1,500/2,500



347



348



357



358



359



361



356



360



362



363



364



365

356. Giant Glass Coke Bottle. Filled with liquid. Height 22 ½". 100/200

357. Coca-Cola "Be Refreshed" Advertising Sign. 1949. Colorful litho affixed to cardboard (as issued), depicting a woman on a sailboat. Framed, 30 x 59". Several creases visible along edges, few closed tears at margins, light marring to image, occasional staining.

400/600

358. Coca-Cola "Hospitality" Advertising Sign. McCandlish, ca. 1950s. Colorful litho affixed to cardboard (as issued), original Kay Displays wood frame with embossed tin decal of a bottle of Coke. 24 x 41". Few small pinholes at corners and margins, three closed tears to lower margins, pale staining to image.

400/600

359. Coca-Cola "Shop Refreshed" Advertising Sign. 1948. Colorful litho affixed to cardboard (as issued), depicting a woman grocery shopping while having a Coke. Framed, 20 x 36". Several pinholes at corners and margins; some affecting image area, central tear to image.

200/300

360. Coca-Cola "Refreshment Worth Carrying" Die Cut Sign. Easel back display with an image of a woman with a picnic basket carrying a six-pack of Coke, a real red feather in her hat. Height 62". Horizontal seam affixed with old tape to verso, else very good overall.

400/600

361. Pair of Coca-Cola Double Sided Advertising Signs. Circa 1950s. Colorful double-sided signs on board advertising bottled Coke paired with food. In original aluminum frames. Each 20 x 37". Occasional marring or rippling to board.

300/500

362. Vendo Model 23 Coke Machine (10c) with Porcelain Drinking Fountain. With glass Coke bottles in cooler. 32 x 18 ½ x 44 ½". Fully restored and working. Uncommon design.

2,500/3,500

363. Right Off the Ice / Coca-Cola. 1946. Canada: Coca-Cola Ltd., 1946. Designer unknown. Poster depicting a girl resting against a bar outside an ice rink, enjoying Coca-Cola. 49 x 29". Linen backed. Repaired tears and losses; creases in margins and image, some overpainting. B-

300/500

364. Coca-Cola Santa Claus Christmas In-Store Standee. USA: Coca-Cola Co., n.d., ca. 1950s/60s. Large in-store holiday standee (61 x 27") of Santa Claus enjoying Coke while children open their Christmas presents. Cut in two pieces horizontally, standee included but detached. Needs repair but overall good condition.

150/250

365. Sonny Sugar Cones Advertising Posters. Cambridge: Charles River Press, ca. 1930s. Two copies of lithographed horizontal posters advertising 5 cent sugar ice cream cones by Automatic Cone Co. 8 ½ x 19". Pale damp-soiling to right edge, corner creases.

80/125

366. Vendo 72 Vintage Coca-Cola Vending Machine. Attractive 10-cent machine vends coke bottles or cans. Unrestored original red paint with classic Coke logo at top. Height 58 ½". No keys.

1,500/2,500



366



367



369



370



368

367. **Cavalier 72 Coca-Cola Vending Machine.** Vintage machine with hinged glass door at left to vend bottles or cans. Unrestored original white finish. Modified to vend a bottle or can for 30 cents. Height 57 1/2". No keys. Oxidation and wear to finish.

1,000/2,000

368. **Six Coca-Cola Salesman Sample Coolers.** 1950s. Miniature cardboard samples of the Vendo V-83, V-216, V-39 Vertical, Victor C-16-A, Cavalier 6-Case Master, and Cavalier C-51. With moving lids and doors, revealing bottles or cans inside, as well as potential profits. The largest 8 x 4 1/4 x 3". Victor with detached lid, minor wear to all pieces. Sold together with two 1950s "investment calculators" that allow the holder to calculate profits of various Cooke coolers.

300/600

369. **Coca-Cola Game Set.** Springfield: Milton Bradley, 1930s. Branded coke game set with two packs of Coke cards, cribbage board with Coke logo, Coca-Cola logo checkers, six Coke-themed score pads, dice, and original instruction booklets. Coke logo and text on box lid. 12 x 10 x 1 1/2". Very good condition.

150/300

370. **Three Vintage Coca-Cola Items.** Including a vintage "Municipal Airport" toy with Coca-Cola theme, including metal plane and cardboard airport model bearing the Coke logo; and two different half-gross boxes of Coca-Cola pencils, in original cases, with different slogans on each set, both cases unused.

50/100



371



372



373



374



375



377



376

371. **Framed Coca-Cola Apron.** Circa 1960. Cloth apron bears the text "Pause...Refresh! Drink Coca-Cola. Ice Cold. In Bottles." Framed under glass to 20 1/2 x 16 1/2".

50/150

372. **Electric Coca-Cola Wall Clock.** Ashland, MA: Telechron, ca. 1950. Red composite clock with classic Coke logo in red on tan face. Diameter 14 1/2".

150/250

373. **Coca-Cola Clock Square Bubble Glass Clock.** Light-up electric clock in metal case, bubble glass cover. 15 1/4 x 15 1/4". Working.

200/400

374. **Two "Enjoy Coca-Cola" Wall Clocks.** 1970s. Molded plastic, rectangular designs with woodgrain patterns. The larger 22 3/4" high. Working.

150/300

375. **Coca-Cola Pretzel Bowl.** 1930s. Aluminum bowl with three cast Coke bottles at perimeter. Diameter 8".

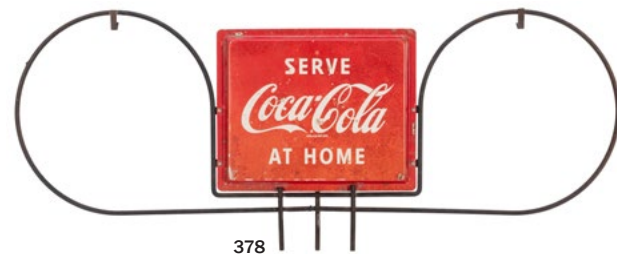
150/300

376. **Coca-Cola Door Handle.** 1950s. Sturdy plastic handle molded and finished in the shape of a filled Coke bottle, likely for use on a cooler. Height 7 7/8". Minor yellowing, wear, and tiny chips.

100/200

377. **Miniature Coca-Cola Transistor Radio.** Molded plastic, in the shape of a red and white picnic cooler. With wired earpiece. Width 2 3/4". Knob missing.

100/200



378



383



385



386



379



380



384



387



388

378. **Serve Coca-Cola at Home Hanging Sign.** Circa 1960. Double-sided sign with Coca-Cola logo at center, flanked by two circles, in which numbers denoting grocery store aisles were to be hung. 12 x 30". Finish worn.

100/200

379. **Coca-Cola Advertising Thermometer.** Donasco, ca. 1950s. Metal bottle-shaped thermometer. Height 16".

50/80

380. **Coca-Cola Uniform Work Shirt / NOS.** 1960s. Size 16 1/2 shirt, NOS retaining original tags, paper collar insert (dated 1962) and chest wrapper. With Coca-Cola "drink in bottles" patch. Shirt by Riverside Masterbilt (Moultrie, GA).

100/200

381. **Coca-Cola Uniform Hat and Pants.** Two mid-century soda fountain garments, including a striped hat (moderate yellowing) with Coca-Cola patch; and a pair of matching overalls trousers by Standard Overall Co.

100/200

382. **Coca-Cola Embossed Tin Sign.** Mid-century red and cream embossed sign, 5 1/2 x 13 1/2". Scratches and some oxidation.

60/90

383. **Fresca Electric Wall Clock.** 1970s. Clock dial above snowflake design. Plastic case. Height 20". Working.

50/150

384. **Four Vintage Soda Advertising Clocks.** Circa 1970s. Electric wall-mount plastic-body clocks advertising Pepsi, Squirt, RC Cola, and 7UP. The largest 20 x 20". Wear to all clocks, but good working condition overall.

200/400

385. **Large Pepsi Thermometer.** 32 1/2 x 3 x 45 1/2". Few surface scratches to frame. Not tested.

200/300

386. **Lot of 10 Advertising Ink Blotters, [mostly Coca-Cola and Soda Related].** Circa 1940s/50s. Includes Coke, "Howdy", and Nehi. Also included is a Picture Play Magazine blotter. Largest 3 1/2 x 8". Very good.

80/125

387. **Pepsi Cola Refreshment Cooler.** Louisville: Progress Refrigerator Co. Model No. A5, new old stock, few faint scuffs to surface, includes original box with unused parts. 13 x 18 x 9".

200/300

388. **Drink Pepsi Cola Bottle Cap Sign.** St. Louis: Stout Sign Co. Antique metal sign with iconic red, white, and blue colors. Diameter 31". Few minor surface scratches, small dent to upper edge, else fine.

500/700

389. **Early Corrugated Pepsi Cooler.** Milwaukee: Jardier, ca. 1950. Jardier Junior portable cooler of thick molded paper with metal handles. Pepsi bottle cap design printed in red on two sides. Original lid with original instructions laid down (but tattered). Height 12".

100/200

390. **Two "Be Sociable Have a Pepsi" Signs.** 1960s. Cardboard signs depict African American families, one with a birthday cake, the other with a movie projector. 11 x 28" each.

100/200

391. **Pepsi Litho Tin Thermometer.** St. Louis: Stout Sign Co., 1950s. Embossed litho tin, "Say Pepsi, Please" text at top, logo at bottom, on a yellow field. Thermometer loose. Mild soiling.

100/200



381



382



389



391



390



392



393



394



395



396



397



398

392. Orange Crush "Crushy" Tin Thermometer. 1948. Crushy figure at bottom, "Ask for a Crush" text at top. Height 11 1/4". Well worn.

100/200

393. Ask for a [Orange] Crush Tin Sign. Tacker metal sign with embossed lettering. 26 1/2 x 3". Minor surface chips with few creases.

150/250

394. Enjoy Orange Crush Double Sided Flange Sign. A.M.D. Co. Metal advertising sign with the iconic green, orange, and white colors. 18 x 14". Oxidation to edges with few small chips to paint and metal.

300/400

395. Drink Mission Orange Sign. Engelwood: Goodren Products, 1950s. Litho over cardboard, with "Naturally good!" text below logo. Light soiling. 17 x 21". Framed.

50/150

396. Three Framed Squirt Calendars. Lithographed paper pin-up-type calendars for the year 1949, advertising the lemon/lime drink, handsomely framed to 24 x 17".

150/300

397. Sun Crest Beverages Light-Up Clock. Elwood, IN: Swihart Products, ca. 1960. Square advertising clock with internal bulbs. 13 x 16 x 3 1/2". Working. Lacks blue "backdrop."

150/250

398. Sun Crest Beverages Six Pack Stand/Wrapper. Atlanta: Mead Packaging, 1960s. Unusual floor-standing metal stand with stretch-wrap attached, used to hold and wrap six pack and eight packs of Sun Crest beverages. Logo at top, plastic wrappers attached to upright. Blue shelf at bottom folds flat. Height 55 1/2".

400/800



399



400



401



402



403



404



405

399. Large 7 UP Styrofoam Display Bottle. Painted in the iconic green, orange, and white colors. Height 42". Some peeling, a few surface chips and nicks.

200/300

400. 7 Up Six Pack Stand/Wrapper. Atlanta: Mead Packaging, 1960s. Unusual floor-standing metal stand with three rolls of 7 Up plastic stretch-wrap attached, used to hold cartons of soda or six packs. Logo at top. Green metal shelf folds flat. Height 55 1/2".

400/800

401. Mr. Newport Countertop Soda Display. Chicago: Mr. Newport, Inc., 1941. With original green bottle. Die-cut display with curved arrow, reading "Your Thirst Choice" above the bottle. Rubbing to finish, else good.

50/150

402. Arctic Fruit Ales Dispenser. Wooden surround bearing the Arctic logo in two colors, with two spigots, and insulated porcelain insert patented in 1908. Diameter 15". No lid. Attractive early dispenser.

200/400

403. Nesbitt's Soda Fountain Syrup Dispenser. Los Angeles, 1920s. Pink embossed glass with colorful Nesbitt's California Orange Juice medallion label and embossed Nesbitt's logo below spigot.

150/300

404. Maxwell House Iced Tea Dispenser. Circa 1960. Porcelain dispenser with metal spigot in the shape of a barrel, Maxwell House name in yellow on front panel. Height 11".

100/200

405. Three Hydrox Advertising Soda Fountain Menus. 1930s. Two ice cream fountain menus in leatherette, with gilt embossed Hydrox logo on front, menus inside; and one a more colorful menu cover with metal frame and Green River color advertisement to rear cover (no menu inside). Height 7 1/4". Toned, but good condition overall.

100/200



406



409



412



416



417



407



410



411



413



415



408



414



418

406. Hydrox Celluloid Buttons and Thermometer. 1930s. Tin thermometer in near-mint condition, with two-color logo at base. Sold together with a large Frozen Gold Ice Cream celluloid advertising plaque. The celluloid buttons manufactured by the Parisian Novelty Co. of Chicago, ca. 1935. Largest item 9" diameter.

100/200

407. Dr. Pepper Cooler Radio. General Electric, ca. 1940s. Seafoam green wood body with original decals, knobs, mesh, and inner mechanics. 8 x 12 x 7". Few surface chips to paint. Turns on.

1,500/2,500

408. Drink Dr. Pepper Tin Sign. Springfield, OH: Robertson Dualife, 1947. Tacker metal sign with embossed lettering. 4 x 19". Few chips and scuffs at edges, few old adhesives affixed to rear with slight oxidation; very good.

200/300

409. Drink Dr. Pepper Porcelain Sign. Red and white colors featuring the slogan "10, 2, 4", which was an ad campaign encouraging users to have a bite and a drink at 10, 2, and 4. Diameter 10". Few small chips to edges.

250/350

410. Dr. Pepper Molded Plastic Calendar. Wall calendar molded with symbols for the four seasons, raised Dr. Pepper logo, with a daily calendar pad to 1974. 14 x 7". Very good.

50/100

411. Grapette Soda Mirror Sign. 1950s. Mirrored sign with colorful graphics and advertising slogans. 16 x 8". Retains cardboard backing and string hanger. Scattered losses and pitting.

125/200

412. Grapette Soda Electric Advertising Clock. 1950s. Blue and red dial within original metal case, under round glass. Unrestored, not working. 10" diam.

80/150

413. Grapette Soda Flange Sign. Oval metal flange sign by Stout Sign Co. (St. Louis). 13 x 18 1/2". Double-sided.

125/225

414. Grapette Syrup Drums. Lot of 3. Three ten-gallon metal drums for Grapette (Camden, Ark.). Approx. 18 x 16". One heavily rusted, others good or very good. No lids.

150/250

415. Grapette Brass Sidewalk Markers and Wooden Crates. Including two bottle crates (12 x 15 1/2"), three brass sidewalk markers (3 3/4" diam.), and a modern paperweight.

80/150

416. Nu-Grape Serving Tray. Coshocton, OH: American Art Works, ca. 1920s. A woman holds a bottle of Nu-Grape soda, "A Flavor You Can't Forget". 13 x 10 1/2". Few chips along edges; very good.

100/200

417. Nu-Grape Soda Round Metal Sign. Circular advertising sign painted to resemble a bottle cap. Diam. 36". Minor wear.

200/300

418. Delaware Punch Sign. Embossed metal advertising sign by Stout Sign Co. (St. Louis). 8 x 27". A little paint loss and discoloration; very good.

200/300



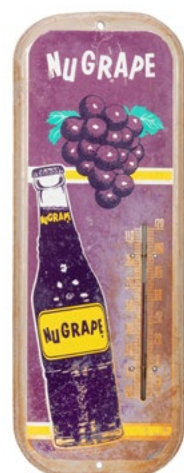
419



420



421



422



424



425



429



430



426



428



427



423

419. Delaware Punch Sign. Embossed metal advertising sign by Stout Sign Co. (St. Louis). 14 x 30 1/2". Heavy paint loss and discoloration.

150/250

420. Delaware Punch Electric Advertising Clocks. 1970s. Including a rectangular molded plastic clock in metal case with back lighting (18 1/2 x 12 x 4 1/2"), clear plastic cover splitting a little at edges, some scratches, working; and a square advertising Duradiant clock by Consolite Corp. (Fremont, OH), second hand loose in case, hard-wired, no plug (15 x 15").

100/200

421. Geise Beverages Sign. 1940s. Embossed tin sign in three colors. 10 x 30". Age-consistent craquelure and paint losses across sign.

100/200

422. Nu-Grape Advertising Thermometer. 1960s. 16 x 6" Heavily rusted and scratched. Retains thermometer.

50/100

423. Large Root Beer Barrel Dispenser. Oak barrel with two taps and drip tray, metal banding, iron claw feet. With lid. Height 32". Interior lining clean.

300/500

424. Dad's Root Beer Bottle Cap Sign. Diameter 29 3/4". A fine example.

600/800

425. Double Cola Metal Barrel Drum. A ten-gallon drum that once held Double Cola syrup. Height 16", diameter 14 1/2". Surface scratches and wear.

100/200

426. Pair of Soda Signs. Includes an embossed tin sign for Wine Dip Soda and a die cut sign for Sun Crest soda. Larger 15 x 9".

100/150

427. Pair of Soda Advertising Window Cards. Includes Ol' Smoothie Root Beer (with cardboard stand) and Grapette Soda (dampstained to lower image). Larger 26 x 20".

100/150

428. Royal Crown Cola Display Rack. Painted yellow metal rack with red lettering: "Take Home A Carton". Height 39". Surface wear to paint.

150/250

429. Royal Crown Cola Wall Clock. Circa 1950s. Electric clock with bubble glass face. Diameter 16". Working.

200/300

430. Yoo-Hoo Chocolate Energy Drink Celluloid Sign. Embossed image of a bottle of Yoo-Hoo with cardboard backing for mounting. Height 9". Minor spots of discoloration, else fine.

50/100



431



436



437



438



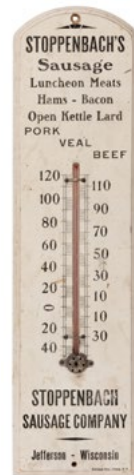
439



440



432



433

431. **Monarch Finer Foods Salesman Sample Portfolio.** Dubuque, IA: Monarch Finer Foods, ca. 1939. Pebbled black portfolio stamped with the Monarch name. Folio (18 1/2 x 12"). Thirty-one pages filled with tipped-in colored lithographed product labels. In addition, there are photographs of Monarch's locations throughout the U.S. and photographs of how their merchandise should be displayed and much more. **100/200**

432. **Bellboy Apples Standee Sign.** Lithographed (Erie Litho) cardboard standee in the form of a bellboy holding an apple platter, for the growers in Wenatchee, WA. 14 x 8". Crease at boy's neck, but holding. **50/100**

433. **Stoppenbach's Sausage Wooden Advertising Thermometer.** Corona, NY: Dorfman, ca. 1940s. Wooden thermometer with printed advertising for the Jefferson, Wisconsin butcher. 15 x 4". Temperature measure inaccurate. **50/100**

434. **Beier's Bread Co. Neon Sign.** Dixon, IL, ca. 1930s/40s. Round sign from the bakery's storefront. 25 x 34 x 6 1/2". Unrestored; without neon. With a sheet of background information on Beier's. **350/550**

435. **Gardner Bread Hanging Advertising Sign.** 1940s. Grocery/country store hanging sign in the form of a giant loaf of white "corn top" Gardner-brand bread, logo and text at center, and slogan at ends. Length 26". Wear and toning to wrapping. **100/200**

436. **Heinz Oven Baked Beans Crock with Pots.** Circa 1960. Attractive brown porcelain baked bean warming crock with original Heinz-made serving pots (9; various sizes, Heinz name underneath). Heinz Oven Baked Beans logo to front of crock. Diameter 15". Very good. **200/400**

437. **Mission Real Fruit Juice Glass Dispenser.** Mission Dry Corporation, ca. 1950. Pebbled glass dispenser with embossed text, on aluminum base with lid and mixer. Height 12 1/2". **100/200**

438. **Hamilton Beach Malted Milk Dispenser.** Racine: Hamilton-Beach, ca. 1966. Classic soda fountain accessory with spring-loaded dispensing mechanism, porcelain base, and chrome trim. Maker's plate to front. Working. Height 18". Very good. **200/400**

439. **Hamilton Beach Malt Mixer.** Racine, WI. Affixed to porcelain base. Height 17". Working. **50/100**

440. **Hamilton Beach Triple Malt Mixer.** Desirable mint green/jade porcelain with chrome finish. Height 20". Refurbished. Working. **500/600**

441. **Campbell's Chicken Noodle Soup Warmer Station.** Geuder, Paeschke, & Frey Co., ca. 1960s. Restaurant or diner style soup station with a metal advertising backing, wire rack shelves, with two stainless steel soup cups which plug into a heating mechanism for warming up soup. Height 18". Heating mechanism not tested; appears to be new old stock. **200/300**

442. **Minut-Bun Countertop Sandwich Warmer/Server.** Chicago: Helmco-Lacy Co., 1950s. Large L-shaped countertop model "Bar-B-Q Bar," with two warming crocks and four bun toasters. 19 1/2 x 13 x 15". Finish scratched. **200/400**



441



442



443



447



444



445



446



448

443. Sof-Tee Porcelain Malt or Ice Cream Mixer. Los Angeles: Sof-Tee Corp., ca. 1950. Extremely heavy porcelain base supporting large plastic containers above, for mixing ice cream, malts or milkshakes. Includes two extra mixing cups. Hand-lettered Sof-Tee logo in red at base. Height (inclusive of cups) 21 ¼". Working.

400/800

444. Knorr's Hot Beef Bullion Dispenser. Circa 1940. Bright blue body with Knorr logo to front, and bright orange/copper lid. Insulated. Original wiring present, but lacking plug. Minor chips; bright and attractive. Height 13".

100/200

445. "Buttery Fresh! Popcorn" Lighted Sign. Plastic and metal light up sign. 48 x 4 x 12". Fine condition; working.

200/300

446. Fresh Seasoned Popcorn Glass Sign. Reverse painted mirrored glass sign, in wooden frame. 9 ½ x 28 ½" overall.

100/200

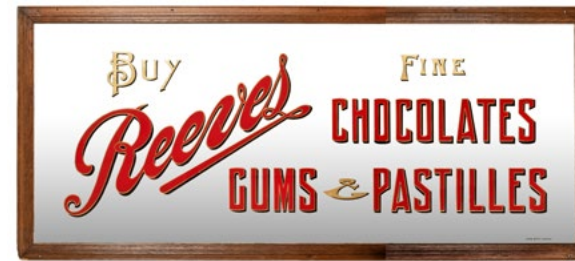
447. Mr. Peanut In-Store Advertising Costume. Plastic and mesh elements in the shape of the iconic Planters Peanut mascot/logo, for use advertising in grocery stores. With the often-missing cane. Removable hat. Height 46". Very good condition.

300/600

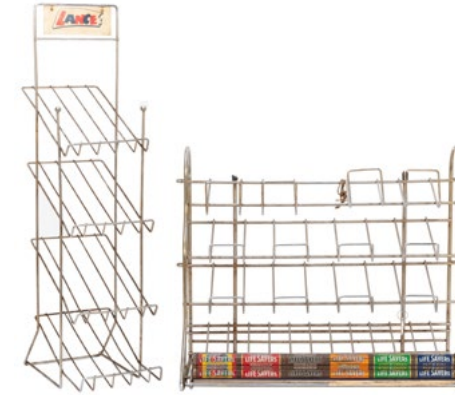
Mr. Peanut, who had served some 104 years as the face of the Planters Peanut corporation, died in 2020 when the company reported he "sacrificed himself" in a traumatic auto accident. Rest in peace, old friend.

448. Pair of Planters Peanuts Jars and Lids. Colorless glass jars with peanut-shaped handles on lids, one with yellow graphics, the other with embossed lettering and images. Height of taller jar 12 ½".

80/125



449



450

449. Reeves Chocolates Reverse-Painted Advertising Mirror. Glasgow: Knox Bros., ca. 1900. Oversize oblong mirror bearing the text "Buy Reeves Chocolates - Mints - Pastilles" in red and gilt. In a hardwood frame. 29 x 66". Heavy. Very good condition.

400/800

450. Lance and Lifesavers Display Racks. Countertop wire racks, one for Lance, four shelves, height 26 ½"; the other for Lifesavers, 13 x 20 x 9".

50/100

451. Route 66 Light-Up Café Sign. Large plastic and metal sign with two hooks at top for hanging. Black paint on white plexiglass. 36 x 46 x 12". Double-sided.

300/600

452. Big Boy Restaurant Metal Figural Statue. A large statue of the famous Big Boy restaurant mascot in his checkered overalls with a juicy hamburger held high. Mounting tabs on base. Height 41". A fine example.

800/1,200

453. Carr & Co. "The Ice Maiden" Biscuit Tin. Carlisle, ca. 1890s. Embossed tin with various scenes of "The Ice Maiden" or "Hans Andersen's Stories for the Household". Height 6". Lid darkened, colors cracking with few scuffs; good. Rare.

100/200

454. Pair of McLaughlin's Coffee Canisters. Chicago: W. F. McLaughlin & Co., ca. 1906. Both tin examples, the first advertising "Bankers Mocha and Java" with alligator skin graphics; the other advertising "Arabian Mocha and Java" with paper label. Tallest 6". Age consistent rust and spotting overall.

50/100



451



452



453



454



455



456



461



462



457

455. **Pair of Chase & Sanborn Coffee Canisters.** Boston/Montreal: Chase & Sanborn, ca. 1910. Tin examples, advertising "Seal Brand" and "Java & Mocha" on paper labels. Tallest 6". Oxidation to lids, scattered spotting and soiling to labels. Internally clean. Uncommon. Described as the first coffee company to pack and ship roasted coffee in sealed tins. 50/100

456. **Group of 11 Product Advertisements.** Mostly food related, includes several window displays featuring Ty-Phoo Tea; Gorton's Cod Fish Cakes; and Mennen Baby Powder. Others include original watercolor illustration art for women's lingerie; a box of Milk Duds featuring Don Kessinger; a Washington Crisps insert (framed); four Post's Bran Flakes boxes with images of famous North Americans; and a 1943 Taystee Bread calendar featuring "Our Gang" (also known as "The Little Rascals"). Very good. 150/250

457. [McDonald's] **A Massive Collection of Approx. 1,000 Vintage McDonald's Happy Meal Toys, Packaging, and Memorabilia.** American/Canadian, ca. 1970s/90s. Four large boxes filled with Happy Meal toys (many unopened) and related packaging, tableware utensils, glassware (some Disney), paper and plastic cups, posters, unused paper hats, food service containers and wrappers, buttons, ashtrays, Ronald McDonald cloth doll, unopened comforter, inflatables, and much more. Must be seen. 300/500

458. **Chapin & Gore Bourbon Advertising Thermometer.** Circa 1950s. Round advertising thermometer with bubble glass, pictorial dial in blue and black and white. Diam. 12". 100/150

459. **Hotel, Restaurant, and Bartenders Union House Sign.** Lithographed tin sign, stamped number 38 lower left, designating the establishment in which it hung as a Union House, employing members of the Hotel & Restaurant Employees and Bartenders' International Union. Printed notice to verso. Chain hanger. 6 x 11 1/8". Light scratches, slightly bumped corners. Nice example. 100/200

460. **Bud Light Spuds MacKenzie Lighted Figure.** 1980s. Hard plastic dog resting on electric lighted platform. 16 x 16 x 10". Very good. 100/200



460



463



466



464



465



467

461. **Group of Vintage and Modern Tobacco Advertising.** Seven pieces, including framed George Walton 5 Cent Cigars; American Spirit embossed metal sign; Bugler Cigarette Tobacco embossed metal sign; Pig-Tail Crooks paper sign; Polar Bear Tobacco embossed metal sign (AAA Sign, 1991); two framed cigar labels (Red Cloud and Moro Light); Troya Fine Cigars laminated sign; and two novelty "What are You Smoking?" signs. 125/225

462. **Group of Tobacciana and Other Advertising.** Including William Penn Havana Cigars Advertising Playing Cards (Philadelphia, ca. 1890s), 52 + J + OB, each of the four aces with custom advertising text, advertising joker, backs printed in color, cards tend to stick together, some skinned; Cortez Cigars (Key West) tray; La Toco Havana Cigars tray; Metropolitan Furniture Co. advertising tray of a beautiful woman; two mechanical figural bottle openers; Pinzon celluloid pincushion; and a sleeve of advertising blotters. 100/200

463. **"Chesterfields are Milder" Cigarette Sign.** 1950s. Lithographed cardboard sign in yellow, red, blue, and white. Dampstain at left. 11 x 21". Framed. 100/200

464. **Mail Pouch Tobacco Thermometer.** Three-color graphics and text to front. Red on reverse. Height 38". Minor wear to finish. 100/200

465. **Berghoff Famous Beer Tray.** Lithographed tin tray in black, yellow, and red. 10 1/2 x 13 1/4". Moderately scratched. 50/100

466. **Yusa Pilsen Beer Figural Chalkware Tavern Advertisement.** Ceramic/chalkware scene of a tavern with a customer being served a frothy mug of beer. 9 x 13 x 3". Chipping and losses, repaired breaks and cracks. Mirror cracked and held with tape on verso; likely to require further restoration, and sold as is. 50/100

467. **Pabst Blue Ribbon Vintage Motion Display.** A colorful celluloid display which when plugged in, the car's wheels turn and the car rocks back and forth. Length 16". Few cracks to display. Working. 200/300



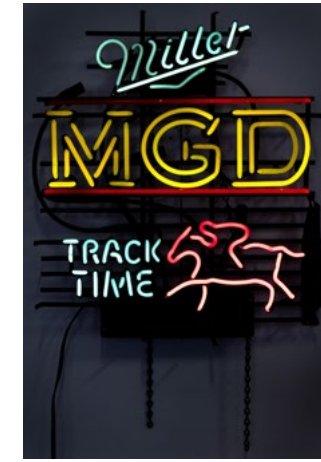
468



469



474



475



477



470



471



476



478



479



472



473

468. Eremite Prince William Rye Whiskey Tip Tray Printer's Proof. Milwaukee: Schuckmann & Seligmann Co., ca. 1900s. Colorful litho with gilt lettering surrounding three gentlemen sitting around drinking the whiskey. Diameter 13". Few smudges, else very good.

100/200

469. Group of Five Jumbo Counter Display Bottles. Includes a Heublein Whiskey display with nine smaller bottles held around it; two Seagram's whiskey bottles; Royal Canadian; and Schenley. Average height 20".

100/200

470. Lot of 3 Beer / Beverage Signs and Clock. Including Schlitz "Move Up to Quality" lighted farm scene sign (1958), 10 1/2 x 26" in original box; Rheingold Lager Beer Puerto Rico sign, 15 3/4 x 16 3/4"; and electric 7-Up clock, 18 x 12 x 4", working.

100/200

471. Olympia Beer Served Here Mirrored Sign. Olympia, WA, ca. 1980s. Wooden frame. 20 1/2 x 26 1/2".

30/50

472. Twenty Grand Cigarettes Cardboard Sign. Lithographed cigarette advertising sign featuring a horse as the main image inside a faux wooden frame. 31 x 24". Worn, stained, and chipped; sold as-is.

100/200

473. Bendixen Tobacco Co. "Little Yara" Standee. Silkscreen standee sign on cardboard, as issued. 19 3/4 x 14 3/4". Yellow spotting, slight losses to edges.

100/200

474. Busch Beer Neon Sign. Full-color Busch bottle cap above the Busch logo lettering in bright neon. 25 x 25". Working.

100/200

475. Miller MGD Track Time Neon Sign. Allanson International. Height 29". Working.

50/100

476. Old Mr. Boston Liquor Store Display Clock. Gilbert, ca. 1930s. Embossed tin body with an eight day clock. Height 22". Few surface scratches, light rubbing to lettering. Sold as is.

100/200

477. Miller High Life Neon Beer Sign. 1970s. Famous bowtie logo in bright neon, with blinking pattern. 16 x 21 1/2". Working.

100/200

478. Wall Mount Die Cut Michelob Beer Signs. Unusual wall-mounted signs with the beer's logo at the center of each bottle. Heavy chrome, height 48" each.

100/300

479. Olympia Light Beer Lighted Wall Sign. 1970s. Metal frame surrounding a panoramic image of Tumwater lake. Backlit Olympia logo at bottom. 19 1/2 x 29".

150/300



480

481

480. Pair of Fehr's Beer Bear Lamps. Figural chalkware lamps advertising Fehr's Beer. Height of tallest 23". Missing original glass beer bottles, paint chipped on smaller lamp.

100/150

481. Vins du Postillon Thermometer. A French advertisement for wine with original printed label on verso. New old stock. Length 11". Fine.

100/200



482



487



483

482. **Pair of Vintage Beer Advertising.** Includes a Schlitz hanging lamp and a light up Heilman's Old Style sign.
50/100

483. **Superior Vintage Mexican Beer Cooler.** Moctezuma Brewery, ca. 1940s/50s. Original bright red painted metal cooler embossed with white lettering. Height 35". Length 29". Surface scratches and wear.
200/300



484

485

484. **R.G. Dun Reverse Painted Glass Sign.** Mid-century glass sign painted in gilt with red lettering, in a heavy period frame. Loss of paint at top, top edge of frame lacking. 56 x 17". Sold as is.
100/200

485. **Very Old Fitzgerald Porcelain Dispenser.** Teal green glaze with gilt lettering, original spigot. Lacking lid. 13 x 11 x 8". A scarce Kentucky whiskey collectible.
100/200

486. [Cigars] **Six Ceramic Cigar Humidors, Cylinders, and Holders.** Includes a tiki hut humidor with lid, a blue transfer print humidor, two Tony Borhani Millenium Series cylinders, "The Big Chief's Cigars" holder, and a "Tabac" milk glass holder with an overglazed image of a fox hunting scene. Largest height 11 1/2". Overall, very good.
200/300

487. [Cigar Labels] **Group of Early 20th Century Cigar Labels.** Circa 1900s. Approx. 200 labels of unused stock consisting of many different brands including Corona de Rosas, R. Sonnemann Cigar Co. "The Little Ford Cigar", Blue Bird, Omar, Sea Robin, Lucky Bill, Lady Mary, Clear Title, Leandro, Silver Prince, White-Cat, Three Twins, King Cotton, Peaceful Henry, Western Bee, National League Perfectos, Big Wolf, Whale Back, The Round-Up, and many more. Near fine.
500/1,000



486



488



490

488. [Cigar Labels] **Large Collection of Over 3,000 Cigar Labels.** Unused stock representing over 50 brands; bulk consists of Optimo Palmas, Jolly Roger Buccaneers, Cuesta-Rey Palma Supreme, Emilia Garcia, Sport of Kings Victory Perfecto. Other brands include Tueros, Bering, E.W. Shaw, White-Cat, Big Five, Sherlock Holmes, Sonny Boy, HY-Ball Crooks, Nobby Blunt, and many more. Approx. 7 1/2 x 7 3/4". Overall, near fine.
500/1,000

489. **Cigarette Pack Penny Inserter.** Circa 1950s. Three cylinders, hand crank, mounted on wooden stand. Height 15".
100/200

490. **Collection of Approx. 50 Early Tobacco and Cigarette Packs.** An assortment of various brands, most full, including Big Kick, Penns, Fleming-Hall's Antique Ye Olde Tyme' Mixture, The Broom, Himyar, La Turka, Our Flag, Murad, Pyrgos, Nebo, Coffee Tone, and much more. Bright graphics.
300/500

491. **Collection of Over 20 Early Tobacco Cloth Pouches.** Circa 1890s/1900s. Each bag is full of tobacco (all but two), many with original seals and paper labels. Brands include Buffalo by Liggett & Myers (seal unbroken, with original papers); two Golden Grain (seals unbroken, with original die-cut tags); Cardinal; Rio Grande; Checkers; Greenback (with original papers); Pride of Reidsville (with original die-cut tag); Corn Cake; Union Leader; Pride Rose; Klondike; Bon White; Cut and Slash; Peter Pan; Old north State; Marburg Bros. Pickings; Old Chum Virginia Tobacco; and several others. Handsome graphics.
400/600

492. **Collection of 19 Vintage Cigarette Tins.** Brands included are Pall Mall, Fatima, Old Gold, Smiles, Coronation, Camel, Benson & Hedges, Parliament, Kool, Chesterfield, and several others. Few surface scratches; bright graphics overall.
100/200



489



491



492



493



499



500



502



494

493. Group of 19 Vintage Cigarette Boxes and Tins. Brands included are Lucky Strike, Chesterfield, Fatima, Black Cat, Old Gold, Egyptian Prettiest, Gordon Buchanan, Prince Condosis, Pall Mall, Melachrino, Philip Morris, and Camel (unopened). Also included is a Rocky Ford cigar box with Native American box label. Very good.

80/125

494. Group of Nine Early Tobacco Tins. Includes Mayo's, Mellomints, Little Chancellor Tips, Round Trip, Qboid, Auto Continental Tobacco, and Allen & Ginter's Imperial Cube Cut. Scattered surface scratches and digs; good.

100/200



495

495. Group of Early Wooden Cigar Boxes. 5 pcs. Brands include Covered Wagon, Chicago Club (G. Bluthardt & Co.), Our Star, Sir Jonathan (McConnell Segar Co.), and William Hooper. Average 8 x 5 x 3". General wear to extremities; overall good with bright and clean interior graphics.

100/200



496

496. Group of Four Tobacco Countertop Displays. Includes Joe Tinker 5 cent cigar box glass lid (slightly oxidized); tin litho Havana Fives cigar display holder; Yankee Girl Scrap box display; and a Seven Seas display pack container (full). Largest 8 x 5 x 7 1/2".

100/150

497. Group of Five Tobacco Related Advertisements. Includes two die-cut Old Judge cigarette cards with baseball advertisements on the verso (one marred); a litho cardstock (possibly a label) featuring Tiger Stripe chewing tobacco; a die-cut display for Kinney Bros. cigarettes (framed); and a Wings Cigarettes poster with airplane graphics. Overall, very good.

100/150



497

498. Chesterfield Cigarettes Tin Sign. Liggett & Myers Tobacco Co., ca. 1940s. Enamel painted sign with embossed lettering. 12 x 34". Few dents to right lower corner, slight oxidation to left edge, occasional faint surface scratches; image bright and clean.

100/200



498

499. Helmar Turkish Cigarettes Porcelain Sign. New York: Balto Enamel. 12 x 36". Light edgewear with occasional chipping, lower right corner and lower eyelet restored.

200/300



501

500. Hi-Plane Tobacco Tin Sign. Brightly colored sign with embossed lettering and edges. 12 x 35". A fine example.

100/200

501. Lot of Vintage Advertising, [mostly tobacco related]. Tobacco advertising includes Union Workman foil packs; The Heroes of the Civil War tobacco trading card booklet; High Toned box label; United Cigar Store certificates; and others. Other items include Wrigley gum wrappers with coupons and a Gold Tip Gum box. Good condition.

80/125

502. Model Tobacco Tin Sign. 13 x 19". Paint chipped at edges and upper image area, slight oxidation to upper edge.

50/100

503. Pinch Hit Chewing Tobacco Tin Sign. Ohio Art Co., ca. 1910. Tin litho sign with a central image of a baseball player and a large embossed image of a pack of tobacco. 14 x 9 1/2". Scattered oxidation to image area, few dings to edges and corners.

100/200

504. Tobacco Brand Booklets, Catalogues, Almanacs, and Works. Consisting of "Game Birds of America" (Allen & Ginter); "Governors Coats of Arms" (W. Duke); "The Rulers Flags Coats of Arms" (W. Duke); "Shadows" (W. Duke); Florodora Tag Company catalogue; Velvet Joe's Almanac (1918-1923); and "Tobacco in Song and Story" by John Bain Jr. (suede covers stamped in gilt). Good overall.

250/350

505. [Tobacco] Wilson & McCallay Tobacco "Come Sit Here" Premium. New York: Knapp Co. Lith., 1894. A merry group of barroom heroes sitting around drinking and playing music. This picture was part of a giveaway; 25 tags from Plug Tobacco brands gets a various picture premium such as this one. Matted, 19 x 25". Light creasing to image.

50/100



503



504



505



506



509



510



511



512



513



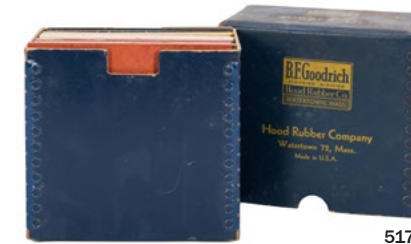
514



515



516



517



518

506. Vintage Sandow Cigar Advertising Clock. Handsome vintage regulator advertising clock with cigar labels surrounding it, including several advertising the strongman Eugen Sandow. 33 x 76 x 5".

1,000/2,000

507. Women Themed Cigar Boxes. 5 pcs. Labels include Brown Beauties, Edela, Fancy Shape, Art Club and Mi Lola. [Together with:] over 100 packs of Jar-O'-Do Lucky Seven gambling pull tab match-paks. Largest box 8 x 5 1/2 x 4 1/2". Scattered soiling to labels; overall good.

50/100

508. Seaside Gasoline Sign. Double-sided porcelain sign, triangular, in three colors. Losses to both sides, but still attractive. 65 1/2 x 70".

2,000/3,000

509. Mobil Magnolia Pipe Line Co. Oil Line Sign. Single-sided porcelain sign, white with red lettering, Pegasus logos, marked "MC-AX Dallas" lower right. 8 x 15". Some paint loss and scratching.

200/300

510. Group of Three Vintage Metal Signs. Three single-sided porcelain signs, including Canada Dry (7 x 24"); Aviation Oil (10 x 12"); and Chevron Aviation Fuel (8 x 11"), with brackets for price tiles.

200/400

511. Texaco Advertising Stilts. Wooden stilts with triangular metal platforms. Texaco name and star logo in white on red wooden uprights. Height 64".

50/150

512. Standard Oil OPC Glass Crown Pump Globe. Classic glass gasoline pump topper, finished in red over white milk glass. Diameter 17". Minor paint wear at top; no visible cracks or chips.

200/400

513. Atlas Tire/Standard Tire Rack Display. Circa 1960. Double-sided floor-standing metal and wire rack advertising Atlas tires, "guaranteed" by Standard. With vintage tire. Height 30".

200/400

514. Marvel Mystery Oil. Eight Cans. Red and black oil cans in a variety of sizes. The largest a one-gallon can, the smallest 4oz. Most in good to very good condition.

100/200

515. Orange Industrial Lubricants 20 Pound Drum. Large empty can with bright green, orange, and white finish. Height 27". Minor wear especially at base; graphics clean and bright.

50/150

516. Two Polarine Five Gallon Can in Original Crate. Including one can of Polarine Tractor Grease (full of product); and one empty five gallon can of oil. Both in the original wooden crates. Height 15". Cans worn.

200/300

517. B.F. Goodrich Rubber Tile Salesman Samples. Circa 1930. Colorful boxed set of rubber tile samples issued by Hood Rubber of Watertown, Mass. 6" squares. Goodrich logo to box and reverse of each sample. Box shows wear.

100/200

518. Amoco. Great Things are Coming. Vintage paper poster likely issued to service stations in the 1950s to advertise Amoco products. 41 x 27". Rolled. Near mint; A.

100/200



519



524



520



521



522



523

519. Three Five Gallon Vintage Oil Cans. Including one Pennzoil, and two Cen-Te-Co Lubricants (Gear and Chassis and Super-Refined) cans. Height of tallest 16 1/2". All well-worn, but attractive.

150/300

520. Three Five Gallon Vintage Oil Cans. Including one Blue Band, Standard Oil Company (Indiana) Motor Oil, and one Marathon V.E.P. Motor Oil can. Height of tallest 17". All well-worn, but attractive.

150/300

521. Four Five Gallon Vintage Oil Cans. Including Veedol Tractor Oil, Imperial Refinery, Site Special Motor Oil, and Quality Bonded cans. Height of tallest 16 1/2". All well-worn, but attractive.

150/300

522. Prestone Anti Freeze Rack. Embossed metal front panel with Prestone logo in white, blue, and red. 22 x 20 x 7 1/2". Rust and wear; good overall.

100/200

523. Atlas Air Filter Tester. Circa 1960s. Light switch is turned on to compare a new filter with the old filter. Light will not shine through if there is dirt in the filter. Height with filters 11", diameter 13 1/2". Few faint surface scratches; working.

150/250

524. La Belle Corsette Neon Sign. Chicago, ca. 1960s/70s[?]. Single-sided porcelain neon sign, blue with white lettering, depicting the Eiffel Tower. 72 x 76". Neon removed; on a stand with tower-shaped legs.

800/1,200

La Belle Corsette was a corsetry, swim-wear, and lingerie firm which operated for many years in Chicago's Rogers Park neighborhood. It was owned by Celia Elbaum, a Jewish Holocaust survivor who was sent to a concentration camp and, from her early training and skill in corsetry, was forced to sew for Nazi soldiers. She emigrated to Chicago after World War II, eventually saving enough money to open her own store.



525



526



528



529



527



530



531

525. Countertop Women's Lingerie Display Manikin. Mid-century painted plaster composition display manikin with realistic horsehair wig, base lettered faintly "Princessa by Neiman," wearing bra and half slip, plus a rhinestone gown. Height 27 1/2". Cracks and discoloration to torso and face; needs restoration.

125/225

526. Ex-Lax Thermometer. Porcelain advertising thermometer. 38 3/4 x 8 1/4". Wear to porcelain at top and bottom.

200/400

527. GE Appliances 2-Color Neon Sign. Length 33". Working.

250/350

528. Holeproof Hosiery Standee Sign. Circa 1930s. Tinted photograph standee for the line of hosiery—"lustrous beauty that endures." 14 3/4 x 9 3/4". Soiling across image, heavy with losses at lower left.

40/80

529. Ace Hardware Satin Sign. Circa 1970s/80s. Cream satin with red and green graphics, red fringe. 27 x 21 1/2". Sewn with round opening at top for rod hanger. Creases from folding; new old stock.

100/200

530. Ace Hardware Shopping Baskets with Display Racks. Two displays of plastic baskets with folding handles.

50/150

531. Scotch Tape Countertop Merchandise Rack. Circa 1960. Rotating metal rack with marquee with six spaces for rolls of tape. Height 20". Minimal wear.

100/200



532



536



533



537



539



541



534



535

538

532. Antique Tape Dispenser. Cast metal with chrome finish, rocado floral design. Length 12".

50/100

533. Buckaroo Bull Denim "Confederate Gray" Advertising Card. Circa 1950s/60s. Offset lithograph in-store insert card for Buckaroo denim, depicting a Confederate flag. 7 x 11". Light edgewear.

50/100

534. Androck Eye Bolts Hardware Store Display. Circa 1950s/60s. Advertising Masonite sign in red and yellow with eyes to hang eye bolts of six sizes. 12 x 15 1/8".

50/100

535. Columbian Pure Manila Rope Cutter. Circa 1940. Floor-model rope dispensing and cutting device with spindle-and-gear arrangement at rear, Columbia advertising in white lettering over read on front dial. Likely for use in a hardware store. Height 56".

200/400

536. Everbred Flashlights & Batteries Countertop Display Case. Circa 1920. Etched glass front, with wooden framing and hinged rear door. 25 1/2 x 15 3/4 x 17". Label on rear door torn, else good.

200/400

537. African Queen Large Wooden Sign. 20th century. Wooden sign, carved and painted in green and gilt. 10 x 59 x 5/8".

100/200

538. Miss Curity Counter Display Figure. Circa 1950s. Figural design made of hard plastic and affixed to tin base. Height 20". Minor glue stains at seams, slight oxidation to base, else very good.

100/200

539. Braniff Airways Concorde Model Airplane. Circa 1970s. Wonderful hard plastic artist's model of a Braniff Concorde jet, painted in cream, orange, and gray, on metal stand in take-off position. 25 x 11". A few paint losses including to lettering, imperfect fit on stand, yet very good overall.

200/300

540. Collection of Vintage Airline Souvenirs. Circa 1970s/90s. Lot includes Cathay Pacific Jumbo watch; Cathay Pacific Spirit of Hong Kong diecast model airplane (boxed); (21) NIB Soviet Airlines pins (boxed); Australian Airlines mousepad; Pan Am amenity kit; (17) junior pilot wing pins; and other various airline souvenirs. Overall very good.

40/80

541. Motorola Television Hour Backdrop Sign. 1950s. Wood and plastic sign with raised silver lettering. 19 x 60". Purchased from the Chicago Broadcast Museum; most probably, the sign was used for the Motorola Television Hour show, which ran from 1953-54.

400/600

542. For Sale / C.B. Hess Wooden Sign. Early 20th century painted wooden sign, double-sided, with white lettering: "For Sale/C.B. Hess." Metal grommets. 12 x 18". Divots and scratches. We found reference to a C.B. Hess associated with the Chicago Terra Cotta Roofing and Tile Co., along with other Hess family members, but the association of that company to this sign could not be conclusively determined.

125/225

543. Pair of Peters Shoe Store Standees. In-store standee price signs for \$2 and \$5 items, sizes 9 1/2 x 6 1/4" and 5 x 9". One with slight paper losses at edges.

60/90



540



542



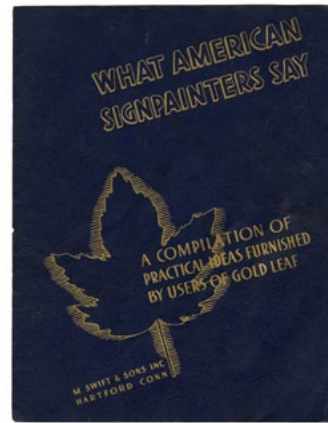
543



544



545



546



550



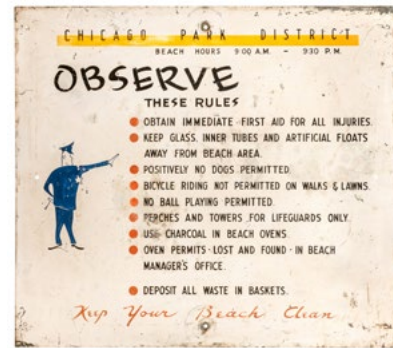
551



547



548



549

544. Wee Walker Shoe Store Advertising Display. 1950s. Tiny metal chair with pink seat and backrest, the latter printed in blue to advertise Wee Walker Shoes. Height 16 3/4". Insignificant wear; good.

50/150

545. Pair of Kodak U.S. Bicentennial Standee Signs. 1976. Cut-out cardboard signs with standees, advertising Kodak cameras and featuring a marching band and majorette. Size of larger 14 x 11". Slight bends to edges, paper gently lifting from backing ply; very good.

50/100

546. [Sign Painting] What American Sign Painters Say [cover title]. Hartford, CT: M. Swift & Sons, n.d., ca. 1940s. Wrappers printed in gilt. [24]pp. 4to. Pamphlet on sign-painting techniques using gold leaf, on glass and other surfaces. Uncommon; only one privately held copy traced (American Sign Museum).

50/150

547. City of Chicago Amusement License. 1895. License #182. Lithographed license made out to the Central Music Hall at State & Randolph St., for the year 1895-96, at a cost of \$200. The license permits the business to "give entertainments of the 2nd class,...provided that no gaming, raffle, lottery, or chance distribution of money or articles of value shall be connected therewith." 18 x 12". Chipping and soiling in margins. Rare.

400/600

548. City of Chicago Amusement License. 1894. License #116. Lithographed license made out to the Central Music Hall at State & Randolph St., for the year 1894-95, at a cost of \$200. The license permits the business to "give entertainments of the 2nd class,...provided that no gaming, raffle, lottery, or chance distribution of money or articles of value shall be connected therewith." 18 x 12". Chipping and soiling in margins. Rare.

400/600

549. Chicago Park District Painted Sign. Vintage painted heavy metal sign from a Chicago Park District Beach, enumerating the rules for use of the grounds, and picturing a police officer at upper left. Holes around perimeter for installation. 32 x 36". Well worn.

150/300

550. [Chicago] Collection of Approx. 350 Vintage Matchbooks from Restaurants, Cocktail Bars, Hotels, and Other Advertisements. Consists of many famous Chicago institutions including La Salle Hotel, The Palmer House, Chicago Motor Club, Charles Matthews Merchandise Mart Drug Store, The Drake Hotel, The Berghoff, Park Dearborn Hotel. Other notable advertisements include cigar stores, Coca-Cola and Pepsi products, New York hotels and bars, drug stores, and much more. Neatly housed in a Master Matchless Album showing the front and back of the matchbook. Light soiling and rubbing to album. Overall, a very good collection.

200/300

551. Chicago 1933/34 Century of Progress Metalware and Figural Items. Five pieces, including a Havoline Tower plastic thermometer; metal badge numbered 11188; (2) letter openers; and Phot-O-Coin flip book. Size of largest 8".

50/80

552. Six World's Fair Advertising Canes. Chicago, 1933. Six advertising canes, five bearing metal medallions advertising the Century of Progress, one with a color decal. Medallions advertise the Hall of Science, Fort Dearborn, and other exhibits. The tallest 35".

100/200

553. Two "We Give Regal" / "Premium Stamps" Signs. Double-sided tin signs with hanging tracks at top and bottom. The first bears the text "We Give Regal," and the second, "Premium Stamps." Blue lettering and logo on yellow, each 23 x 36". One with the original wax paper affixed to one side. Near fine.

200/400

554. Reserve National Life Insurance Double Sided Sign. Large vintage porcelain sign with yellow text over a blue background, grommet/hanging holes at edges. 32 x 54". Wear around perimeter, but very good overall.

300/600

555. Lions Club Tin Advertising Sign. Round single-sided metal sign with iconic Lions Club logo. Diameter 18".

50/100



552



553



554



555



556



560



562



564



557



561



563



565

556. Bank of America Glo-Dial Neon Clock. Reverse-painted advertising clock for Bank of America's "Timeplan Financing." Diam. 22". Labels to clock dial and side of can. Newer electrical plug. Working.

400/600

557. Bank of America American Clock Co. Neon Clock. Reverse-painted advertising clock for Bank of America's "Timeplan Financing." Diam. 22". Original electrical plug damaged; not tested.

300/500

558. Bank of America Chinese Advertising Calendar. 1932. Shanghai: Liang Yu Printing, (1932). Calendar poster advertising Bank of America's California branches in San Francisco, Oakland, Stockton, San Diego, Calexico, Los Angeles, and Sacramento, and depicting a Chinese girl under moonlight. 30 1/4 x 20". Framed and matted; date in graphite in upper margin, small tears, chipping, and creases visible. With two smaller calendars (1939/52), one well worn.

300/500

559. Bank AmeriCard Countertop Lighted Sign. Metal and acrylic countertop credit card advertising, with backlighting. 8 x 10 x 4".

50/100

560. Mark IV Air Conditioning Pam Clock. Diamond-shaped advertising clock, in sheet metal case with glass cover, and dial advertising the air-conditioning company. 15 x 15". Battery-operated quartz movement, not working.

150/250

561. Electrolux Lighted Advertising Clock. Electric clock in metal and plastic case, graphic acrylic dial with advertising. 25 x 10 x 4". Hard-wire connection; not tested. Essex NPI (Lima, OH) label on case.

100/200

562. Electrolux Sales and Service Sign. Hanging acrylic sign. 24 x 49".

100/200

563. Fruehauf Service & Parts Advertising Clock. 1950s/60s. Duradient electric clock by the Consolite Corp. (Fremont, OH) for Fruehauf. 15 x 15". Working.

80/125

564. KAR Products Electric Advertising Clock. Metal case with bubble glass, advertising KAR with the slogan "Keeping Things Moving." 12" diam.

50/100

565. [San Francisco] Washington St. / Taylor St. Intersection Street Sign. Circa 1930s/40s. Enameled cast iron sign, white lettering on dark purple, double-sided, attached to heavy post with decorative finial. 22 1/2 x 20". Unrestored; slight paint losses and scuffing. A wonderful old San Francisco piece.

250/350

566. [Boise, ID] Abbs St. / Kootenai St. Intersection Street Signs. Mid-century pressed metal street signs, double-sided, on heavy cast iron post with brackets. 21 x 19 1/2 x 19 1/2". Expected paint loss and scratches.

200/300

567. San Francisco Trolley Bell. Circa 1930s. Brass stamped "Muni RY". Diameter of bell 9 1/2". Light oxidation to fastener, without pull-chain, else near fine.

150/300



566



567



558



559



568



574



569



575



580



582



581



570



576



571



577

568. **South Washburn Street Sign.** Location unknown. Pressed metal sign, white with black lettering. 36 x 5 3/4". Scratches and paint losses.

100/150

569. **U.S. Route 6 Road Sign.** Black and white tin sign with shield and arrow. 20 x 40". Few rust spots at edges, several surface scratches and wear as seen with road signs.

200/300

570. **Idaho Highway 46 Road Sign.** 1977/79. Black and white metal sign, one sided, for Idaho State Highway 46, which runs north to south in the area between Boise and Twin Falls. 24 x 24". ITD label lower right.

125/225

571. [California] **Truck Route Auto Club Road Sign.** Bi-directional road sign, one-sided, with Auto Club So. Cal. logo at bottom. 18 x 18". A little paint loss and darkening.

200/300

572. [Railroadiana] **Smoker Car Passenger Rail Sign.** Glossy particle board sign, double-sided, directing passengers forward to non-smoking cars, and rear to smoking cars. 6 x 14". Small chips at corners.

50/100

573. **Pair of Railroad Signs.** Including Santa Fe Chief round single-sided porcelain (12"), of later manufacture; and Stop/Tank Car Connected (12 x 15"), sheet metal.

80/150

574. **Berkeley-Davis Sign.** 20th century. Pressed steel sign for the machining company. 3 1/2 x 21 1/2".

50/100

575. **No Parking This Side / Police Order Cast Iron Sign.** Painted cast iron sign in yellow with black lettering, one sided (verso blank yellow), diam. 18". Heavy paint loss and wear.

50/150

576. **Buffalo Springfield Cast Iron Excavator Sign.** Heavy cast iron sign with raised lettering. Unrestored, old paint flaking. 19 1/4 x 8 5/8".

300/500

577. **Bank Window Signs and Sidewalk Markers.** Including two bank signs on ply board, double-sided, reading "Today is Bank Day" on obverse, and "Tomorrow Will be Bank Day" on reverse, small metal grommets and string hanger. 9 x 10"; and three Bank of America cast brass sidewalk markers.

50/100

578. **Bank Americard Credit Card Signs.** 1960s/70s. Three metal signs, double-sided. Two signs 16 x 23", the other 20 x 30". With paint loss, rust, and some loss of metal to larger sign.

100/200

579. **Caution - Dry Ice Work Safety Sign.** Second half 20th Century. Black and yellow sheet metal sign from an industrial/factory setting. 10 x 14". Slight paint loss and scratching.

50/150

580. **Group of NOS Razor Blades and Gillette Counter Standee.** Including a razor-shaped Gillette standee (pitted; 11 x 6"); and NOS packs of razors on original backing boards (5 total, two for Personna and Star brands).

125/225

581. **Lot of Three Gillette Safety Razors.** Including an early example in original metal case, serial number N526651; mid-century Lady Gillette with blue handle and star design, in case with blade pack; and another in plastic case. With two unopened packs of 10 Gillette Super Stainless blades.

60/90

582. **Washburn College Wall-Mount Alarm.** Having a round brass bell (14" diam.) and painted cast iron mount with brass college seal. Height 18". Includes hardware.

100/200



572



578



573



579



583



586



589



591



584



585



588



587



590



592



593



594

583. **Zenith Cobra Demonstration Record Player.** Record player by Zenith, with plaque marking this as a "demonstrator" not for re-sale, having "Zenith Cobra" emblazoned on the speaker grille. One speed (78rpm). Working. 14 x 16 x 11".

100/200

584. **Victrola Model VV-XI Gramophone.** Camden: Victor Talking Machine Co., ca. 1915. Attractive mahogany cabinet. Height 44". Decal and serial number plate in good condition. Working. Requires new needles and repair to needle holder at end of arm. Serial No. 135236. Dealer's tag inside lid.

250/500

585. **Airline Super Heterodyne Tabletop Tube Radio.** 1930s. Having a wooden cabinet, plastic knobs and dial, fabric grille, and period tube components. 7 ¼ x 10 ½ x 6". Crack to veneer on top left edge, slight nicks, but clean and attractive overall.

100/200

586. **General Electric F-63 Tabletop Cabinet Radio.** Circa 1937. Beautiful Art Deco-era cabinet, lacquered, restored and updated with added selector switch and hardware for external audio source. 17 x 7 ½ x 9".

150/250

587. **Dictograph "Dicto-Grand" Radio Loud Speaker.** With the original black painted brass horn, speaker base retains maker's plaque and paper label on underside. Unrestored, needs re-wiring, not tested. 13 x 10 x 10 ¼".

80/125

588. **Sparton Wood Floor Console Radio.** "Jewel" series. Original inner parts and knobs present. Height 39". Few surface scratches, inner chords in fair condition. Sold as is.

50/100

589. **Bonadyne Radio.** Hardwood cabinet with lid. Five knobs. Mechanical parts appear to be original and complete. 23 x 12 x 9". Few scuffs to lids, else very good. Not tested.

100/150

590. **RCA Radiola 18.** RCA Victor Company, ca. 1928. Length 27".

50/100

591. **Vintage Hotpoint Television.** Model 14S202. Mid-century portable television with original knobs and antenna. 15 ½ x 13 x 11". Few tiny surface nicks, light discoloration to side panel; not tested.

200/300

592. **Zenith Electron Tube Repair / Replacement Suitcase.** A serviceperson's carrying case filled with boxed radio electron tubes from a variety of makers including RCA, Westinghouse, Panasonic, Hytron, GE, Raytheon, Sylvania, and others. Tubes not checked individually, but appear to be NOS. One clasp on case damaged, otherwise good. 22 x 18 x 8".

125/225

593. **Recoton Needle Inspection Service Microscope and Service Cabinet.** Long Island City: Recoton Corp. Includes file of replacement needles on catalogue cards. 14 x 16 x 6". Small tear to board.

250/350

594. **Victor His Master's Voice "Nipper" Advertising Dog Figure.** Large in-store composition "Nipper" dog, from the illustration used for decades by RCA Victor/His Master's Voice record labels. Height 34". Moderate flaking and cracking, but stable condition.

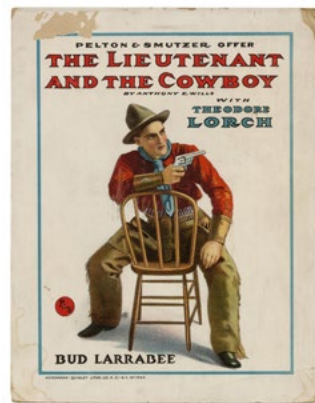
200/400



596



595



599

595. Massive ABC Sports Cloth Advertising Banner. Television sporting event banner in red, white, and dark blue fabrics, with grommets at each corner. 112 x 76". Minor soiling; good condition overall.

200/400

596. Brunswick Bowling Contest Advertisement Banner. The Brunswick-Balke Collender Co., 1940. An oversized linen banner advertising for the "Brunswick Red Crown Bowling Carnival" featuring a bowling contest with \$1,000 grand prizes. Original promotional tag attached. 36 x 120". Scattered foxing and offsetting to image. Good.

100/200

597. [Golf] True Temper Steel Golf Shafts / Don't Suffer from ICQ. 1936. Color golf club advertising poster that promises to restore a player's confidence with True Temper's new line of clubs. 18 1/2 x 13 3/4". Framed. Creases and tears in image; not examined out of frame. Sold with a "Fore!" lettuce crate label depicting a golfer (mounted to crate panel).

200/300

598. Liberty Magazine 1931 Tattooed Sword Swallower Cover. Front cover only for the desirable May 30, 1931 issue of Liberty, with an illustration by Leslie Thrasher of a tattooed sword swallower, Prof. Zobo. 11 1/2 x 8 1/4". Top edge slightly ragged not affecting image, old soiling.

40/80

599. The Lieutenant and the Cowboy. New York/Kansas City: Ackermann-Quigley Litho, ca. 1910s. Stone lithograph window card for the Western play by Anthony Wills, starring Theodore Lorch. 14 x 11". Creasing, staining, and skinning generally outside printed area.

125/225



601



603



605

600. [Poster] New England Condensed Mince Meat. Chicago and Port Byron, NY, ca. 1930s. Horizontal lithographed banner advertising poster. 10 1/2 x 42". Linen backed. Impainting along folds, minor creases. A-.

125/175

601. [Poster] Satin Skin Powder / Satin Skin Cream. Circa 1903. Color stone lithograph advertising poster promoting the skin-care products of the Albert F. Wood company. 41 x 27". Linen backed. Nice, strong copy with a few short closed tears and scant impainting. A-.

150/300

602. U.S. Lines Bait Casting Cardboard Sign. Circa 1940s/50s. Offset lithograph cardboard sign bearing a fishing illustration by E.M. Daniel, advertising the company's spool varieties Black Bear, Strong Heart, and Black Knight. 23 1/2 x 13". Trimmed lower margin, creases and edgewear.

50/100

603. King, Hamilton. A Sozodont Toothpaste Girl. New York: W.F. Powers, 1913. A beautifully colored lithograph of one of the Sozodont Girls advertising the popular brand of oral hygiene products. Matted and mounted with conservation tape, sight 27 1/2 x 20". Light soiling and spotting to image and verso, small tears with loss to border.

100/200

604. Listers Animal Bone Fertilizers Calendar. 1908. Philadelphia/New York: Ketterlinus, 1908. Advertising calendar with color lithograph image of the "Finding of Moses." 22 x 13". Piece torn from upper right corner, closed tears, creases, light stains, small chips. Mounted to a sheet of semi-stiff paper.

50/100

605. Hartford Insurance Chromolithograph Advertising Poster. Circa 1890s. Sharp chromolithograph portrait of William E. Gladstone, M.P., issued by the Hartford Fire Insurance Company. Gilt wooden frame. Overall size 30 x 22 1/2".

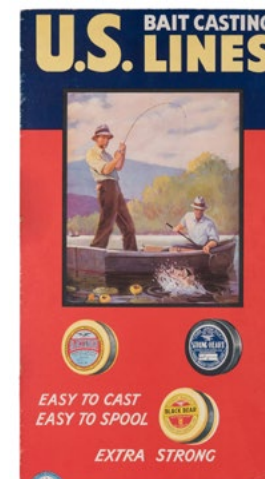
150/250

606. Voigt's Crescent Flour Sleeping Doll Offer Poster. Two-color poster advertising a sleeping doll available with a discount coupon to buyers of flour. 17 x 22".

50/100



600



602



604



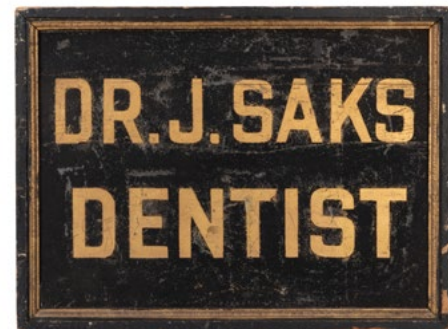
606



607



609



610



608



611

607. F.J. Sherrard Jeweler Oversized Pocket Watch Sign. A cast iron frame with aluminum face outdoor store display with double sided hand painted graphics advertising a jewelry shop. Height 23", diameter 18". Scattered abrasions to face. Very good.

600/800

608. Hand-Painted Wooden Barber Pole. American, 20th century. Red, white, and blue trade sign, having wear and darkening consistent with age. 40 x 4 1/2 x 4 1/2".

400/600

609. Group of Six Barber Bottles and Photograph. Including four clambroth bottles with orange lettering, with caps (7"); two milk glass (7 1/2"); and a framed mid-century photograph of a barber with customer (8 x 10"). Bottles with a few hairlines and other age-consistent wear.

150/250

610. Dentist Wooden Trade Sign. Post 1880. Double sided with gilt lettering for a Dr. J. Saks, having a black granular surface, double framed. 15 x 20". Few horizontal cracks, surface rubbing and abrasions; good.

50/100

611. Dr. Cebelak Chiropractor Mechanical Advertising Display. Wichita: Fairbanks Sign Co., ca. 1922. Reverse painted glass with an image of a human nervous system, turn crank and spine adjusts (crank works, internal mechanisms not working). Height 34". Interior paint significantly chipped, not tested (lacking plug).

300/500



612



613



617



614



615

612. J.C. Cox Mahogany Pub Coin Till. London, ca. 1900s. Coin till in mahogany with central mechanism, hinged door with lock flanked by a six-tiered coin rack, all set on a rectangular base fitted with a change bowl and drawer located beneath the receiving mechanism, enamel plaque affixed to door. Drop in a coin and move the levers to let the coin drop to the bottom and ring a bell. 16 x 7 1/2 x 15". Few scuffs to wood, glass with marker pen, else very good. Working.

150/250

613. Michigan "Ideal" Fancy Cast-Iron Countertop Candy Store Cash Register. Height 16 1/2". Lacking key and top sign. Extremities rubbed, left top corner to cash drawer broken, small break to glass; sold as is.

100/150

614. Toledo Scale Co. Floor Platform Scale. Early 20th century floor-standing scale with large platform. 53 x 39 x 24".

300/500

615. Toledo Scale Co. Floor Platform Scale. Early 20th century floor-standing scale with large platform. 46 x 30 x 24".

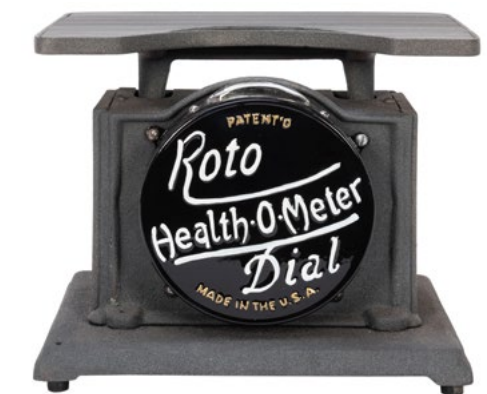
200/400

616. Roto Health-O-Meter. Cast iron bathroom scale. Height 8". Restored.

200/300

617. Dodge Mfg. Micrometer Scale. Yonkers, ca. 1900s. Marble and cast iron base. 18 x 7 x 12".

100/200



616



618



621



622



619



620



623

618. Detroit Fan Head Red #2 Candy Scale. Height 16". Restored.

400/600

619. National Candy Scale. Height 9 1/2". Restored.

500/700

620. Pennsylvania White Porcelain #4 Candy Scale. Bareville, PA: National Store Specialty. Height 14 1/2". Light browning from oxidation at joints.

300/500

621. Lot of Three Kitchen and Candy Scales. Brass, porcelain, and cast iron scales by Pelouze, F.J. Thornton "The Viking," and Hanson. Largest 9 x 12 x 10 1/2". Pelouze scale with a weight to price converter.

100/200

622. Vintage Electric Inflatable Clown Store Display. A fully dressed clown with painted papier mache head and top hat, containing a motor that inflates the clown to full size when plugged in. Height at rest 38", height inflated 57". Working; very good.

350/600

623. Benda, Wladyslaw (1873-1948). Remember! The Girl Who is Waiting for You. World War I era poster asking soldiers to "give her a square deal" by keeping clean of sexually transmitted diseases. Piece torn from left side of image; creases and spotting to image. Fair. Framed, size 22 1/2 x 18 1/2".

100/200



625



626

624. Playboy Pin-Up Calendar Portfolio / Salesman's Kit. 1960s/70s. Sixteen glossy nude and semi-nude pinup calendar prints (16 1/2 x 12") stored in pictorial portfolio sleeve by Fleming Calendar Co. (Chicago), together with sheets of order forms and advertising circulars (nine pieces).

60/90

625. Moore, Al. Complete Set of 12 Esquire Pin-Up Prints in Revolving Wooden Frames. Complete set of a dozen color pin-up illustrations by Moore taken from the pages of Esquire magazine. In six wooden frames with revolving inner frame. 18 x 15" overall each.

100/200

626. Group of 1950s Pinup Prints. Including a sample comb-bound calendar (1955) with 12 photograph pinups (14 x 11"); eight loose illustrated and photograph pinups (sizes vary), including Marilyn Monroe "Golden Dreams"; and two pinup blotters. Some corner wear, but generally very good.

60/90

627. Elvis Presley "Double Trouble" Movie Poster. MGM, 1967. Three-sheet movie poster advertising the feature film starring Presley. Framed. Approx. 80 x 41".

125/250

628. Trio of Magic and Circus Posters. Including Miller Bros. Miss Bonno Shot from a Cannon (27 x 40"); Kar-Mi Selma (41 x 27"); and Willsons Show Printers circus stock poster (41 x 27"). One sheets. Heavy wear to first two posters including losses, stains, and damp-soiling. Sold as is.

125/225



624

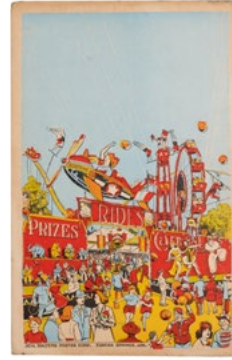


627



2 of 3

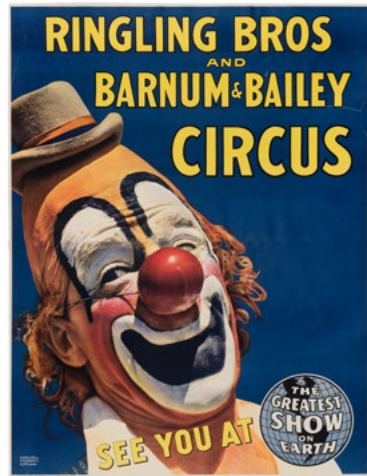
628



629 2 of 5



630 1 of 2



631



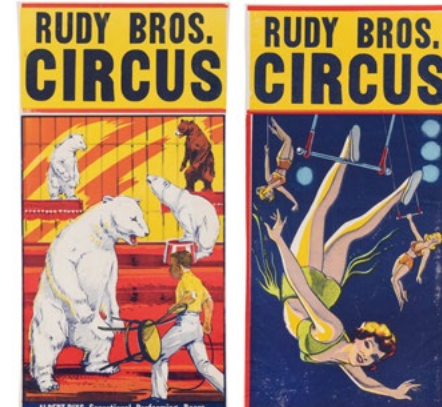
633 2 of 7



632



634 3 of 7



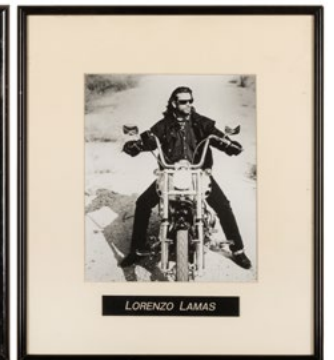
635 3 of 10



636



2 of 8



637

629. Group of 5 Carnival Window Cards. Including Johann Petursson The Viking Giant (28 x 14"); Neal Walters carnival posters (3); and Globe Poster stock trained animal poster. Several with chipping and creases. Fair/good.

60/90

630. Carter the Great Window Cards. Otis Litho, ca. 1920s. Classic color lithographed window cards for the magician Charles Carter, including "Carter Beats the Devil" and "World's Weird Wonderful Wizard." 22 x 14". Both with heavy horizontal crease in lower image area, and some marginal soiling.

125/225

631. Ringling Bros. and Barnum & Bailey. See You At the Greatest Show on Earth. Circa 1960s. Offset lithograph depicting the famous clown Lou Jacobs, after artwork by Maxwell Frederic Coplan. Approx. 52 x 40". Backed on two separate sheets of Kraft paper. Several closed tears to image, a few slight losses.

100/200

632. Ringling Brothers and Barnum & Bailey. Hippopotamus. 1942/43. Offset lithograph circus poster in an uncommon large size. Three-sheet (72 x 42"). Unbacked. Rolled. Slight losses at cross-folds, dated in lower margin, light soiling.

100/200

633. Group of 7 Half-Sheet Circus Posters. American, ca. 1950s/60s. Including Arthur Bros.; Hanneford; Wallace Bros.; Cristiani Bros.; and Clyde Beatty-Russell. Size approx. 28 x 20". On Kraft paper, linen, or unbacked. Condition fair to very good.

100/200

634. Group of 7 Panel Circus Posters. American, ca. 1950s/60s. Including Downie Bros. (trimmed top margin); Carson and Barnes; Cole; Kelly and Miller; and Wallace and Clark. Size approx. 41 x 14". On Kraft paper or unmounted. Condition fair to good.

100/200

635. Group of 10 Circus Posters. American, ca. 1950s/60s. Including Cristiani Bros; Hagen Bros; Carson and Barnes; Rudy Bros; King Bros; Bradley and Benson; and Tex Carsen. Size one-sheet (41 x 27") or smaller. Backed on Kraft paper. Condition fair to very good.

125/225

636. Pair of Motorcycle Posters. Including Thrill Days Motorcycle Stunt Riding (Baltimore: Globe Poster, 1993 [date on verso]; and Jam-On "Biketoberfest" Motorcycle Swap Meet (Baltimore: Globe Poster, 2004). 33 x 22". First poster with heavy horizontal crease; scattered soiling and light stains.

125/225

637. Harley-Davidson Café Framed Photos Lot. Circa 1990s. Eight framed photos of Harley-Davidson motorcycles, obtained from the Harley-Davidson Café in New York City, featuring celebrity riders David Copperfield, Billy Ray Cyrus (autographed), Billy Gibbons, Brian Bosworth, Dan Aykroyd, and Lorenzo Lamas. Largest (Gibbons) 28 x 25", others approx. 14 x 11". Frames worn.

200/300

638. Mueller, Howard. Original Saratoga Cigarettes Advertising Art. 1970s. Ink and watercolor illustration of a man about to be executed by firing squad, refusing a final cigarette because it's not Saratoga brand. Image approx. 16 x 19". On illustration board with paper overlay signed by the illustrator.

50/80

639. Original Jolly Green Giant Advertising Drawings. Circa 1970s. Two original graphite illustrations on paper, accompanied by five color proofs of finished advertisements, one for inclusion in Life magazine. Illustrations approx. 21 x 9", on larger sheets (with tears not affecting image).

50/80



638



2 of 7



639



TOYS & AUTOMATA



640

640. Renou Acrobat Clown Automaton on Two Chairs. Paris: Louis Renou, ca. 1910. A clown, his hands resting between two wooden chairs, slowly raises his body up, balancing on his hands, until the figure is entirely upside down, balanced precariously between the chairs. At each stage of his ascent, the figure pauses – somewhat dramatically – in anticipation of the next step in the balancing act. As the acrobat performs, an internal music box plays. The figure features a hand-painted head, glass eyes, mohair wig, wire arms, original silk costume with sequin-studded trim. On the original wooden velvet-covered base designed for a black art-type effect, giving the appearance of a simple floor board supported by two white wooden trestles. 15 x 8 ½ x 18". Sold with a custom glass vitrine for display. Video on request.

8,000/12,000

641. Clockwork Smoking Window Nodder Automaton. German. Smiling figure with checkered pants, black coat, hat, and bow tie; when activated, the head nods back and forth ad infinitum, as the cigarette in the figure's lips moves back-and-forth in a pattern opposite to the figure's moving eyes. Clockwork mechanism in chest, brass cigarette holder in mouth. Original clothing and finish (soiled and chipped). Height 21". Hands chipped.

1,000/2,000



641



642



644



645



643

642. **Skating Bears Animated Window Display.** Large Christmas display of two standing plush brown bears in winter clothes and scarves, hand-in-hand, and wearing ice skates. One holds a fir sprig. Wooden base uncovered. From a Marshall Field's Christmas window display in Chicago. Height 30". Sold as-is.

200/400

643. **Roulet & Decamps Drinking Bear Automaton.** Paris, ca. 1940s. Electric bear automaton, brown and white fur with composition nose, feet, and mouth, glass eyes. Bear performs the action of pouring liquid from the bottle into the cup, then raises to his mouth, lowers and repeats. Height 13". Nice functioning example with soft and clean coat, some chipping to feet and paws but very good overall.

800/1,200

644. **Wind-Up Performing Muzzle Circus Bear.** Early 20th century key-wound bear with mohair body, muzzled and chained, standing upright, with nodding head and moving arms as entire figure vibrates. Height 8 1/2". Lacks key (easily replaced).

125/225

645. [Automaton] **Vintage Singing Bird Automaton.** Brass cage with a red feathered bird on a perch, a yellow bird below, both sing and are animated when key is wound and switch is turned on.

200/300



646



647



648



649



650



651

646. **Buddy L Dump Truck Toy.** Circa 1930s. Pressed steel, enclosed black cab with red trailer, six-spoke original balloon tires embossed "Buddy L Mfg." Length 25". Apparently mostly original paint, retouching most evident to bumper, headlights, and trailer.

150/250

647. **Tonka "Big Mike" State Hi-Way Dept. Dump Truck.** 1950s. Pressed steel, ten wheel vehicle with original decals, retaining headlights, embossed by Tonka on the rear gate. Length 14". Moderate scratching and some paint loss.

200/300

648. **Tonka Allied Van Lines Delivery Semi Truck.** 1950s. Pressed steel delivery truck with trailer attachment, retaining original decals and Tonka Toys Mound Metalcraft label to underside. Moderate to heavy paint losses and denting. Length 22".

150/250

649. **Starkies Mechanical Clown Coin Swallowing Bank.** English, ca. 1930s. Painted cast metal bank with lever that causes the clown to "swallow" the coin while moving eyes and ears. Height 6". Heavy paint loss, later tiger sticker added to hat.

60/90

650. **Dayton Coupe Friction Toy.** Pressed steel, original green paint, rubber lost from front left wheel, cracked and desiccated on others. Retains fragment of rubber for rear right tire. Length 13".

150/250

651. **Metalcraft Sunshine Biscuits Truck.** St. Louis, 1930s. Pressed steel delivery truck, marked on underside, colorful graphics on both sides, tires embossed with Goodrich/Silvertown. 12 x 3 1/2 x 5 1/4". Moderately to heavily scratched, but stable and clean.

200/300



652



655



657



658



653



654



656

652. Marx Anti-Aircraft Gun and Sparkling Army Plane with Boxes. Two lithographed tin toys by Marx, including Anti-Aircraft Gun (height 9 3/4") and U.S. Army Sparkling Airplane (length 7"). Both with worn original boxes.

125/200

653. Hess Tank Trailer 1964 in Original Box. Perth Amboy, NJ: Hess Oil & Chemical Corp., 1964. Complete with original box, funnel and cardboard insert, and battery card. Size of box 14 1/4 x 2 3/4 x 3". Truck with painted yellow cab. Slight wear from handling, yellowed tape; box sturdy and clean but with a few paper tears at edges. A nice, collectable example of the first Hess truck issued.

500/700

654. Hess Tank Trailer 1967 "Red Velvet" in Original Box. Perth Amboy, NJ: Hess Oil & Chemical Corp., 1967. Eighteen-wheel Hess Gasoline toy truck, made in USA, with original red velvet tray insert and pictorial box cover. Box size 16 x 4 x 4". Notably, the decals on this example are, by manufacturer's error, reversed from standard placement, with "Gasoline" at the front on the left side, and "Hess" at front on the right side, when normally these are in the opposite position. Battery cover not marked by Marx. Larger rear decal. Glossy box with several tape repairs and light staining, but sturdy. Truck very good to near fine, all parts clean and sharp including strong decals (scrape to "Fuel Oils" decal, very slight blemishes to door decals). Lacks battery card.

600/900

655. Group of Six Tin Still Banks. Including Chein Uncle Sam Bank; cash register coin bank; (2) telephone banks; and (2) Dime Register Banks.

100/150

656. Group of Cast Metal and Iron Still Banks. Including a lion; ornate double-door coin vault (lock mechanism removed); modern wooden combination lock coin bank by Ken Niemi; and four other cast metal examples, one by Kenton. Largest 6 x 6 1/2 x 4".

100/200

657. Cast Iron Ibex / Goat Doorstop. Painted cast iron goat whose horns are joined to the body. 6 x 6 1/2 x 2".

50/80

658. Railroad, Transportation, and Advertising Pins and Badges. Bulk 1930s. Including (7) pins for American railroads; Allentown taxi driver badge; Piggly Wiggly and Kroger Stores Fish Service pin; and (2) Bond Breads and Bond Bons. Largest 2 1/4".

60/90

659. Airline Pinbacks Collection. Twenty-one pinbacks, including (6) El Al Israel; Aer Lingus; Air Afrique; Delta; Pan American Construction Team; Western; LA Municipal; and others. Several are employee or access pins.

50/100

660. Comic Strip Character Newspaper Premium Pinbacks. Group of 20 character pins issued in conjunction with newspapers. Includes Popeye, Tailspin Tommy, Nebbs, Harold Teen, Tillie the Toiler, Etta Kett, Jiggs, Ella Cinders, Pa Perkins, Mr. Bungle, Little Annie Rooney, and others. Diam. 1 1/4" or smaller.

50/150

661. The Gumps and Other Comic Strip Pinbacks. Group of 11 pinbacks featuring Gumps characters and others, including Tillie the Toiler and Ella Cinders. Diam. 1 1/4" or smaller.

50/100

662. Kellogg's PEP Character Pinbacks. Twenty-one pinbacks of comic strip and radio characters, including Superman, Smilin' Jack, Skee-zix, Harold Teen, Chester Gump, and others. Diam. 3/4".

50/100



659



660



661



662



663



667



664

663. Lot of Novelty / Joke Condoms. Miniature condoms in plastic cases with gag lines printed on the lids, approximately 180 total, plus a quantity of extra loose condoms.

200/300

664. [Optical Toys] Thaumatrope and Distorting Mirror Toy. French/German, ca. 1880s/90s. Includes "La Lanterne Magique" le thaumatrope (Paris: Académie des Arts Graphiques); and a pocket distorting mirror (4x 3) with original pictorially printed slipcase titled "Taschen Lachkabinet". Faint soiling, few creases to thaumatrope, light edge chipping to printed label on slipcase, scattered oxidation to mirror; good.

150/250



665

665. [Viewer] Wheel of Life Zoetrope. London: The London Stereoscopic and Photographic Co., ca. 1860. Sheet metal body with original interior label (chipped), a turned wooden base, housed in its original wooden box. Included with 12 original strips depicting "A Large Feeder"; "The Little Umbrella Man"; "The Black Turnover"; "The Wild Irishman"; "I Chews"; and several others. Height 14", diameter 12". Scuffing with slight oxidation to metal body, faint dust soiling to strips; very good overall.

350/450



666

666. [Viewer] 19th Century Zoetrope. Sheet metal body with an ornate cast iron base. Included with 23 original strips (10 double sided). Height 13", diameter 11 1/2". Scuffing with slight oxidation to metal body, occasional foxing and dust smudging to strips; few tape repairs to closed tears.

250/350

667. [Viewer] 19th Century Phenakistoscope "The Magic Wheel". New York: J. Bradbury, 1864. Turned wood and brass handle with original viewer disc. Included with 18 hand-colored lithographic discs depicting people in motion with musical instruments, acrobats, dancers, and various others; also with spare viewer disc. Housed in original pictorially printed box. Diameter of discs 7". Box heavily soiled and stained as usual, flaps torn but present, discs dust soiled or toned; good.

300/500

MISCELLANEOUS BLACK AMERICANA TAXIDERMISTRY





668



670



671



669



672

668. **Robert Harbin's Zig Zag Illusion.** 1980s. The magician's assistant enters a tall upright cabinet, and two blades are pushed through her midsection, clearly extending through the cabinet. Then, the center section of the box is pushed to one side, "zig-zagging" the assistant into three pieces, though her head, hand, foot, and a portion of her midsection can be seen during the performance, through windows in the cabinet. The process is reversed and the blades are reversed, yet the assistant emerges unharmed. Wooden cabinet with metal blades which breaks apart for packing. Assembled height 74". One of the most popular stage illusions of the twentieth century. Complete and working.

500/1,000

669. **"Classified Waste Only" Bin.** U.S.A.F. Property of the U.S. Air Force with stenciled lettering; metal plaque affixed to bin. Height 37". Surface scratches and wear.

200/300

670. **Group of 7 Numbered Metal Stakes.** Red metal stakes with white numbering between 3 and 9 on both sides. 19 x 6".

50/100

671. **Cast Brass Plant Stand with Birds and Berries.** Footed plant stand with a design of birds standing on berry branches, front legs with cast floral design. 6 1/2 x 9 1/2 x 7". Additional screws needed to secure rear legs.

50/80

672. **Pair of Lineman Worker Test Phones.** Including a yellow phone by Western Electric marked "Not for Sale"; and a black phone by AT&T. Rotary dials. Size of larger 11 1/2". Old wiring.

30/50



673



674



675

673. **Fire Alarm Box.** Gamewell, ca. 1930. Painted in the traditional red shade, with all internal components. Height 17".

150/250

674. **The Laura Sterilized Hair Net Display Case.** Circa 1920s. Countertop wooden and glass display cabinet with original lettering and lithographed label. Tin insert with paper label of various hair types. 8 x 15 x 8". Top glass panel detached, to require re-affixing.

100/200

675. **McCourt Label Co. Drug Store / Apothecary Cabinet.** Bradford, PA, ca. 1900s. Oak cabinet with three drawers, outfitted with 37 compartments to dispense wax labels for various compounds. Original decal to cabinet, many original label rolls retained. 13 x 22 x 7".

200/300



676



677



678

676. **Munyon's Home Remedies Advertising Medicine Cabinet.** Coshocton, OH: American Art Works, ca. 1890s. Wooden and tin cabinet with slanted top, with printing on all sides advertising Munyon's Homeopathic Home Remedies, portrait of Munyon on top with the quote "I would rather preserve the health of the nation than its ruler." Three drawers with dividers, list of contents for cures of various diseases. 14 x 12 x 14". Unrestored, heavily worn. Retains manufacturer's celluloid label.

150/250

677. **Buckner Peanut Co. Wooden Countertop Cabinet.** Early or mid-20th century wooden and glass lidded display cabinet, retains partially torn Buckner Peanut label on inside lid. 18 x 11 x 11".

80/125

678. **Country Store Counter Display Case.** 20th century. Oak display case with glass cover, having a single slanted shelf with green satin around edges, metal handle to remove shelf at rear. 16 x 12 x 4 1/2".

100/150



679



681



680



685



686



687

679. **Antique Wooden Shadowbox Display Case.** Large upright heavy wooden display cabinet with tiered base, glass front, and clasp, having a red felt backing to pin or mount items for display or sale. 29 x 36 x 3 1/2".

200/300

680. **Oak Barrister's Book Case.** Gunn, ca. 1950s. Blonde hardwood case with felt-lined shelves and glass-fronted doors. Three sections, with four-legged based and top. Overall height 48". Good condition.

200/400

681. **Lane Mid-Century "Switchblade" Coffee Table and Drexler Side Table.** Altavista, Virginia: ca. 1960s. Includes a two-tiered table on swivel (length closed, 53"), stamped with company name and style "No. 991-11"; and side table stamped "Drexler" (height 16", diameter 19"). Surfaces scratches with some chipping to edges; structurally sound.

300/500

685. **Industrial Spot Light.** Large vintage nautical or ship's light rotates on c-shaped arm. Heavy. Attractive industrial design. Original glass lens. Diameter 19 1/2". Significantly rusted. Sold as-is.

100/200

686. **Vintage Industrial Table/Floor Lamp.** Mounted on a cast iron claw foot tripod, adjustable knobs for heightening. Max height 47", shortest height 33 1/2". Few chips to interior shade porcelain, else fine. Works.

100/150

687. **Mole-Richardson Type 214 Senior Solar Spot Lamp.** Hollywood, ca. 1930s. 5000-watt studio stage light with MR logo, multi-color cycle. Includes tripod. Lens diameter 13 1/2", height of lamp (not on tripod) 34". Rare model. A fine example from the Golden Age of Hollywood; working.

500/1,000



688

688. **19th Century Navy Admiral's Chapeau de Bras (Fore-and-Aft) Hat with Wooden Form.** Possibly American. Adorned with a brass button featuring an eagle perched upon an anchor. Included with a wooden form stand for display. Length of hat 18". Very good.

300/400

689. **Bullock & Jones San Francisco Derby Bowler Hat.** Circa 1880s. Hard black felt with rounded crown. Size 7 3/4". Housed with original printed box with cardboard inserts (few chips to extremities, leather strap broken but mostly present). New old stock, hat has never been worn.

200/400

690. **Stetson Bowler Hat.** Philadelphia, ca. 1920s. Sold at the Zions Cooperative Mercantile Institution (stamped inside hat). Hard black felt with round crown. Size 7". Fine; appears to have never been worn.

100/200



689



690



683



684

682. **Pair of Mid-Century Floor Lamps.** Circa 1960s. A futuristic design in white enamel and gilt metal, glass bulb cover with gilt hourglass design, metal shades. Height 33". Slight corrosion to iron base, shades dust soiled with some dents; not tested.

200/300

683. **Napoleon III Sappers Axe.** Painted black wooden body, brass base, steel axe head. Height 37".

250/350

684. **WWII-Era Luger and Clip Holster.** Leather casing with brass snap buttons, belt and chest strap loops. Length 11". Extremities rubbed. An uncommon design.

200/300



691



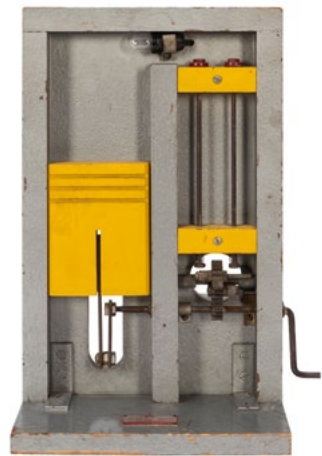
692



693



694



695



696



697



698



699



700



701



702



703



704

691. **Four Poplar Sister's Bonnets.** Circa 1880s(?). Woven with light and dark strips, three with original size paper labels inside. Largest length 9". Very good overall.

400/600

692. **Group of Four Amish Bonnets.** Early 20th century. Examples include one with an interior ownership label identifying a Mary Alice of Arthur, Illinois; a New Wilmington, PA; and few others. Occasional wear to brims, else fine.

100/200

693. **Three Early Bonnets.** 19th century. Includes a grey silk drawn poke bonnet; a high spoon bonnet decorated with lace, cloth flowers, and silk ties housed in original decorated box (lid worn); and a ribbed pink bonnet. Generally good.

300/500

694. **Framed Portraits of Children Assembled from Hair and Cut-Outs.** Skillfully executed portraits of a boy and girl, composed of real hair, diecut heads and limbs, and silk and cloth clothing and embellishments on a water-colored backdrop with dried plant foliage. Framed, 20 x 15".

50/100

695. **Combustion Engine Teaching Model for Driver Education.** Virginia: Earl Allgaier, 1950. Cylinder Model Patent No. 2,629,941. An electric educational device invention for AAA that teaches the structural and operative principles of the four-cycle internal combustion engine commonly used in automotive vehicles. Height 13". Not tested.

100/200

BLACK AMERICANA

696. **Folk Art Carved Black Americana Minstrel Puppet.** American, early 20th century. Carved and painted wooden head with button eyes, stuffed cotton shirt and trousers, and wooden boots and hands. On a black wooden display stand. Height 15".

450/650

697. **Folk Art Carved Black Americana Puppet.** American, early 20th century. Carved and painted hand puppet with striped shirt, twill hands, and wig. Height 12". A rare and early piece recovered from Virginia, possibly with ties to a plantation.

400/600

698. **Folk Art Carved Black Devil Puppet.** Late 19th/early 20th century detailed carved head with leather horns, cape and clothing of felt, silk, and lace. Height 17".

500/700

699. **Black Americana Ventriloquist Hand Puppet with Articulated Jaw.** Early 20th century. Painted polychrome head, having an articulated jaw operated under the costume, composed of satin, cotton, and felt. Padded gloved hands. Height 18".

500/750

700. **Folk Art Black Americana Carved Alligator Pipe.** 20th century. Large carved and painted pipe depicting a coiled alligator biting a black boy. Inset glass eyes. Length 12". Unused; very good.

250/350

701. **Folk Art Black Americana Nutcracker.** Carved and painted nutcracker depicting a black man with hoop earrings. Length 8". Very good.

400/600

702. **Black Americana Bust Pincushion with Tongue Ruler.** Tin and cast metal bust with glass eyes, pincushion surface, and having a tongue which pulls out to a 36" linen ruler. Height 2".

200/300

703. **Black Americana Sambo and Clown Moveable Tin Litho Toy.** Early 20th century moveable toy depicting the heads of two figures whose face, tongue, hats, and necks move as if laughing or jabbering. Approx. 5 x 5 1/2". Working.

150/300

704. **Black Americana Sambo and Clown Moveable Tin Litho Toy.** Early 20th century moveable toy depicting the figures pushing and pulling each other, with moveable arms, legs, bodies, and arms. Approx. 6 x 5 1/2".

150/300



705



709



711



712



706



710



713



707



708

705. **Black Americana Golliwog and Clown Clicker Tin Litho Toy.** Circa 1920s. Clicker toy which causes the clown to bring the croquet mallet down on the head of the golliwog character. 4 x 3".

80/150

706. **Marx Amos 'N' Andy Cab Crazy Car.** Lithographed tin wind-up taxi with Amos, Andy, and dog in passenger seat. Length 8". Nice working example with light unobtrusive scratches.

250/350

707. **Ferdinand Strauss Ham & Sam Minstrel Band Toy with Original Box.** Lithographed tin toy depicts a banjoist and pianist minstrel duo, clockwork mechanism causes the figures to bounce and vibrate as if playing music. 5 1/2 x 6 1/2 x 6". With original box, heavily worn with collapsed sides. Working mechanism.

250/350

708. **Black Clown Figure with Moveable Mouse in Barrel.** Early 20th century. Composition figure depicting a seated clown wearing exaggerated small hat, mechanical wire crank causing a small white rat or mouse to "jump" from the barrel into the clown's mouth. 6 1/4 x 4 1/2 x 3". Small indentation to right shoulder, some repainting.

300/500

709. **Schafer Vator Bisque Bullfrog Swallowing Black Boy.** Early 20th century. Bisque porcelain figure of a bullfrog swallowing a black boy. Removable top shows the boy inside the frog. 4 x 2 x 2". Small chip to frog's back, otherwise very good.

225/350

710. **Schafer Vator Bisque Alligator Swallowing Black Boy.** Early 20th century. Bisque porcelain figure of an alligator swallowing a black boy. Removable top shows the boy inside the alligator. 5 1/2 x 2 x 2".

225/350

711. **Schafer Vator Bisque Frog with Black Boy in Eggshell.** Early 20th century depiction of a frog embracing a black boy in a broken eggshell. Height 3".

250/375

712. **Pair of Bisque Black Americana Sailor Interracial Couples.** Early 20th century bisque porcelain figures depicting white and black sailors with love interests of another skin color. Height of larger 3 1/4". One marked Germany (Schafer Vator). Uncommon.

300/500

713. **Schafer Vator Bisque Black Americana Boys Eating Watermelons Figure.** Early 20th century bisque porcelain depiction of black boys with watermelons by a fence. Gilt detailing. 6 x 4 x 2".

250/350

714. **Cast Iron Nude African Woman Figure.** Early 20th century cast iron figure of an African woman confronting a rodent. Height 4 1/2".

200/400

715. **Original "Smiling Sam" Coin-Op Illustration Art.** American, ca. 1930s. Original airbrushed gouache and ink design, on illustration board, of an Exhibit Supply Co. upright penny arcade machine that would dispense a lucky charm. 14 x 7 1/2". Creases, paper lightly skinned in a few areas.

100/150

716. **Black Americana Kitchen and Small Items Collection.** Bulk 1930s/40s. Twelve items, including Disneyland "Island Natives" painted wooden salt and pepper shakers; "Cappy" cast metal bottle opener with original backing card (damaged); Aunt Jemima Dundee lighter; KIEV Southern California radio station matches in paper case; Royal Bavaria porcelain ashtray (3 5/8 x 3 5/8"); child's kaleidoscope with "African native" on side; (2) advertising tins; Aunt Jemima recipe box; Moonbeam Talcum Powder; "Remember" Oscar groceries reminder board; and Fun-To-Wash powder sealed in box.

100/150



714

715



716



717



722



723



724



725



718



719



720



721



726



727

717. **Black Americana Advertising, Packaging, and Other Items.** Including Aunt Jemima nursery rhyme character cake toppers premium with original box; Smoking Sambo tobacco standee; Aunt Jemima and Uncle Mose vinyl dolls; Toy Carnival jigsaw puzzle with original sleeve; "Barber, barber" jigsaw puzzle; Cream of Wheat package label sheet; Aunt Jemima Grits flattened package; Uncle Mose linen doll; (2) Country Style Corn Meal flattened packages; and Bayshore's make-up kit with minstrel face paint.

100/150

718. **Bell Boy Coin Tray.** Cast and pressed metal with hand painted finish and removable brass tray in his hands. Height 35 1/2". As new.

300/500

719. **Black Americana Porter Coin Tray.** Cast and pressed metal with hand painted finish. The figure wears a red porter's outfit. Includes match box holder. Removable tray. Height 35 1/2". As new.

300/500

720. Messetti, Henrique Vivian. **Messett's Musical Entertainers. Minstrel Show Poster.** Kansas City: Quigley Litho, ca. 1910s. Color lithograph panel poster. Old wooden frame, overall size 44 x 16 1/2". Horizontal folds; pale damp-soiling. B+. One of a series of six racist stock posters Quigley issued employing similar tropes.

400/600

721. **Greater Sheesley Shows. Minstrelsy Poster.** Newport: Donaldson Litho, ca. 1900s. Color lithograph poster employing many black stereotypes, including vignettes of gambling, golfing, an automobile, donkey, and others. Framed, overall size 42 x 28 1/4". Folds; small closed tears and punctures. B+.

400/600

722. [Viewer-Black Americana] **Stereo Viewer with Black Americana Stereo Cards.** Strohmeyer & Wyman (bulk) / Underwood/Keystone View Company/American Stereoscopic, ca. 1895. Wooden viewer with stereo lenses and large magnifying lens. Includes 10 stereo cards with scenes depicting "A Rice Raft, South Carolina"; "Cotton is King, Plantation Scene, Georgia"; "Loading a Mississippi Steamer, New Orleans"; "Native Boys Descending Shaft, Johannesburg, South Africa"; "In a great pine forest-collecting turpentine, North Carolina"; "Picking Cotton on a Mississippi Plantation"; and several others. Viewer length 10", cards 3 1/2 x 7". Light dust soiling to margins, else very good.

200/300

723. **Black Americana Cast Iron Buggy Whip Holder.** Circa 1890s. A hand painted seated black man raises his arms while the springs in his back cause tension in order to hold the handle in place while mounted on a wall. Height 5". Scattered paint chips, else good.

200/300

724. **African Wildebeest Shoulder Mount Taxidermy.** Length 30".

200/300

725. **Black Bear Full Body Taxidermy Mount.** On a grassy base with one foot on a log. Height 42". Length 60". A fine specimen.

600/800

TAXIDERMY

726. **Blackbuck Full Body Taxidermy Mount.** Also known as the Indian antelope. Height 47". Length 37".

400/600

727. **Caribou Shoulder Mount Taxidermy with Full Velvet Antlers.** Height 49". Length 32".

300/400



729



730



731



733



734



728



732



735



736

728. **Dall Sheep Shoulder Mount Taxidermy.** Length 24".
300/500

729. **Gemsbok Shoulder Mount Taxidermy.** Also known as the South African oryx. Height 58". Length 34".
400/600

730. **Greater Kudu Shoulder Mount Taxidermy.** From the antelope family. Height 56". Length 37".
400/600

731. **Hartebeest Shoulder Mount Taxidermy.** From the antelope family. Height 40".
200/300

732. **Large African Cape Buffalo Full Shoulder Mount Taxidermy.** Length 48". A massive specimen.
600/800

733. **Red Wolf Full Body Taxidermy Mount.** On a snow-like base. Height 33". Length 53".
400/600

734. **Sable Antelope Full Shoulder Mount Taxidermy.** On pedestal mount. Length 33", height on stand 74".
300/400

735. **Texas Mule Deer Trophy Mount Taxidermy.** Shoulder mount on wooden plaque titled "Texas Hills 1983". Height 33".
200/300

736. **Wart Hog Shoulder Mount Taxidermy.** With tusks. Height 13". Length 18".
200/300

END OF SALE

Customer's obligation to inspect and report claims. Potter and Potter professionally and safely packs and ships thousands of items every year, and insurance is provided for successful purchasers. In the unlikely event that damage or loss occurs, these are subject to our insurance carrier's rules and limitations. Customers are required to report, in writing, any damage or loss within 72 hours of receipt of merchandise. The carrier's delivery record shall be conclusive as to this matter.

Correcting Shipping Address and report of non-receipt: Prior to shipping winning lots, customers must provide Potter and Potter with a current and accurate shipping address. Once an order has been shipped, any address changes or updates are subject to a \$25.00 return to Sender fee, in addition to shipping charges.

In the event an item is lost during transit, it is customer's obligation to report non-receipt within 7 days of the date on which the item(s) were shipped.

Third-party shipping. Certain large, high-value, and fragile items will require the services of professional packing and transportation, or pick-up directly from our gallery. We suggest that you contact our Shipping Department before the sale for advice on the shipping and handling requirements that apply to the lots of interest to you.

If third-party shipping is chosen by the buyer or required by Potter & Potter, the buyer will arrange for removal of the merchandise from P&P within 15 days following the sale and must communicate and coordinate removal arrangements with P&P during regular business hours (Monday – Friday, 9am – 5pm).

Arrangements for third-party transportation are the responsibility of the buyer. We will not be responsible for the acts or omissions of carriers and packers whether recommended or not by us. Property will not be released to the shipper without the buyer's written consent and until payment has been made in full. Unless otherwise agreed, all purchases should be removed by the 15th day following the sale.

Risk of loss or damage in shipment. Any risk of loss or damage to the shipment through a third party carrier, once the item is removed from Potter and Potter, is at the risk of the buyer, and Potter & Potter is not liable for loss or damage of these items.

Ship to address. The winning bidder is responsible for providing Potter & Potter with an accurate address for the order destination as well as specific instructions for delivery.

Shipping costs. Shipping costs include charges for labor, materials, insurance, as well as actual shipper's fees. Buyer agrees to reimburse Potter & Potter the difference if actual shipper's fees exceed the invoice amount.

Storage fees. Potter & Potter will charge a storage fee of \$50 per week for any orders awaiting payment and/or removal for more than 15 days following the auction date. This cost shall constitute a lien against such property, which may be removed to a public warehouse at the risk, account, and expense of the purchaser.

International shipping. Potter and Potter ships internationally. All shipments will include an itemized invoice with the actual and correct purchase totals including the buyer's premium and shipping cost. International buyers are responsible for knowing their country's laws on importing items as well as paying all customs and duties fees on purchased items.

Non-Payment – If we do not receive payment in full, in good cleared funds, within seven (7) business days following the sale, we are entitled in our absolute discretion to exercise one or more of the following measures, in addition to any additional actions available to us by law: (1) to impose a late charge of one and a half percent (1.5%) per thirty (30) days of the total purchase price, prorated to commence on the date of the sale; (2) to hold the defaulting buyer liable for the total amount due and to begin legal proceedings for its recovery together with interest, legal fees and costs to the fullest extent permitted under applicable law; (3) to rescind the sale; (4) to resell the property publicly or privately with such terms as we find appropriate; (5) to resell the property at public auction without reserve, and with the purchaser liable for any deficiency, cost, including handling charges, the expenses of both sales, our commission on both sales at our regular rate, all other charges due hereunder and incidental damages. In addition, a defaulting purchaser will be deemed to have granted us a security interest in, and we may retain as collateral security for such purchaser's obligations to us, any property in our possession owned by such purchaser. At our option, payment will not be deemed to have been made in full until we have collected funds represented by checks, or in the case of bank or cashier's checks, we have confirmed their authenticity; (6) to offset against any amount owed; (7) to not allow any bids at any upcoming auction by or on behalf of the buyer; (8) to take other action as we find necessary or appropriate.

LIABILITY

Condition Reports – Potter and Potter Auctions, Inc. is not responsible for the correctness of any statement of any kind concerning any lot, whether written or oral, nor for any other errors or omissions in description or for any faults or defects in any lot. Neither the seller, ourselves, our officers, employees or agents, give any representation, warranty or guarantee or assume any liability of any kind in respect of any lot with regard to merchantability, fitness for a particular purpose, description, size, quality, completeness, condition, attribution, authenticity, rarity, importance, medium, provenance, prior ownership history, or historical relevance. Except as required by local law any warranty of any kind whatsoever is excluded by this paragraph.

Purchased Lots – If for any reason a purchased lot cannot be delivered in the same condition as at the time of sale, or should any purchased lot be stolen, mis-delivered or lost prior to delivery, Potter and Potter Auctions, Inc. shall not be liable for any amount in excess of that paid by the purchaser.

Legal Ramifications – The rights and obligations of the parties with respect to these Conditions of Sale, the conduct of the auction and any matters connected with any of the foregoing shall be governed and interpreted by the laws of the jurisdiction in Illinois. If any part of these Conditions of Sale is found by any court to be invalid, illegal or unenforceable, that part shall be discounted and the rest of the conditions shall continue to be valid to the fullest extent permitted by law.

Discretion - Any and all of the conditions may be waived or modified in the sole discretion of Potter and Potter Auctions, Inc.

Potter and Potter offers historically significant items which may include culturally insensitive material, including but not limited to racist and sexist content. The content and form of such items does not reflect the views or values of the auctioneers or staff.

Potter & Potter Auctions, Inc. Phone: (773) 472-1442
(Illinois Lic. # 444.000388) Fax: (773) 260-1462
3759 N. Ravenswood Ave. Ste. 121 www.potterauctions.com
Chicago, IL 60613 info@potterauctions.com

Sami Fajuri, Managing Auctioneer
Lic. #441.001540

Text: Christopher Brink and Joe Slabaugh
Layout: Stina Henslee
Photography: Shelby Ragsdale

Note: Many supplemental and detailed images of auction lots ~ not shown in the pages of this catalog ~ are available online at Liveauctioneers.com, or directly from Potter & Potter.

Potter & Potter wishes to thank Paul Hindin, Dan Davids, Lynn Reichert, Deborah Adelman, Jesse McClure, Mark Thomas, Dale Whitman, Eric Jungnickel, John Rogers, James Soffer, Rodney Simale, Morris Everett, Larry Lubliner, Mark Gray, David Hirsch, George Glastris, Jack Freund, John Carini, Richard Sandage, Paul Biechler, Helene Lys, Alan Kaye, David Brown, Eugene Brown, Alex Warschaw, Jeffrey Halpert, Ray Cassatta, Ron Pulver, Daniel Auger, Mick Lartigaut, Diana Schieber, Dave Price, Michael Kam, Joyce Toy, Fernando Norona, Allen Liffman, Warren Raymond, Dominic Greco, Robert Warren, and Matthew Laubenstein-Smith for their assistance in the preparation of this catalog.

Contents copyright © 2020 by Potter & Potter Auctions, Inc.

All rights reserved. No part of this publication may be reproduced or transmitted in any form or by any means, electronic or mechanical, including photocopy, recording or any information storage and retrieval system now known or to be invented, without permission in writing from the copyright holders.





POTTER & POTTER AUCTIONS, INC.
WWW.POTTERAUCTIONS.COM