

# ENTER THE MATRIX

THE WACHOWSKI COLLECTION - MAY 12, 2022

*Lana Wachowski* & *Lilly Wachowski*





PUBLIC AUCTION #117

# ENTER THE MATRIX

## THE WACHOWSKI COLLECTION

### AUCTION

Thursday  
May 12, 2022  
10:00am CST

### INQUIRIES

Josh McCracken  
josh@potterauctions.com  
phone: 773-472-1442

Previews:  
May 10-11, 10am-5pm

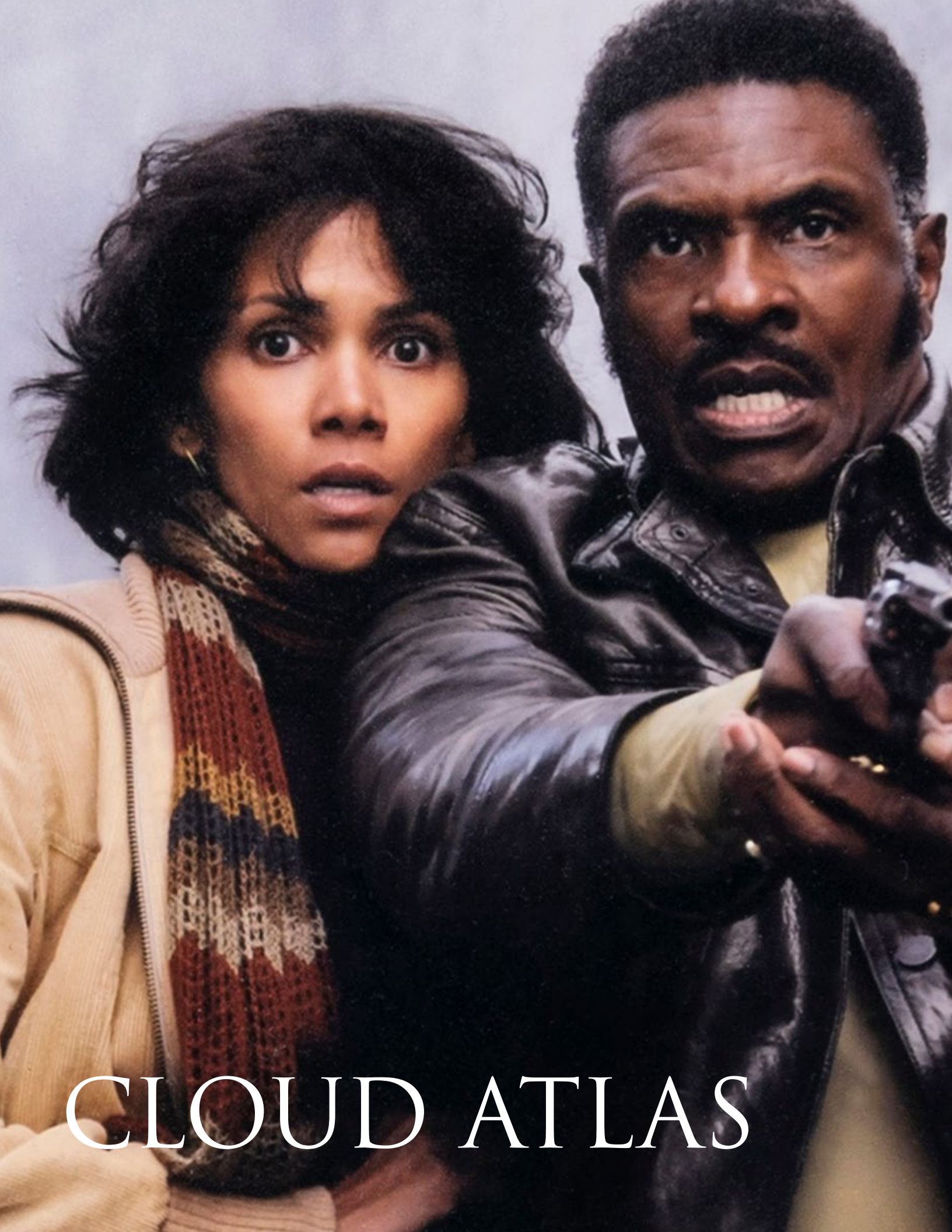
### CONTENTS

CLOUD ATLAS .....	2
JUPITER ASCENDING .....	10
THE MATRIX .....	17
SENSE8 .....	30
BOUND, NINJA ASSASSIN, SPEED RACER, AND V FOR VENDETTA .....	39
AWARDS .....	43
POSTERS .....	53
PERSONAL MEMORABILIA .....	61

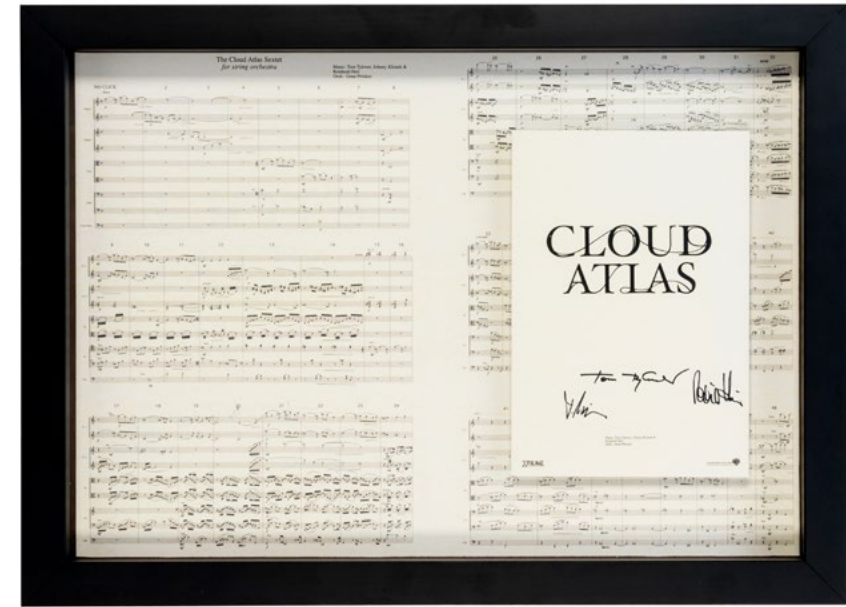


POTTER & POTTER AUCTIONS, INC.  
5001 W. BELMONT AVE.  
CHICAGO, IL 60641





1



2

**1. Chase Scene Screen-Used Banner from Cloud Atlas.** Original vinyl banner with imagery rendered in graphic style depicting the narrative arc of the film, from Adam Ewing's opening sequence at sea to the death and subsequent worship of Sonmi-451 as a deity, as seen during the chase sequence in 1973 San Francisco in which Luisa Rey (Halle Berry) has to escape her pursuers who are bent on retrieving her copy of Rufus Sixsmith's (James D'Arcy) bombshell report. 80 x 246". Provenance: The Wachowskis.

200/300

**2. The Cloud Atlas Sextet Signed Sheet Music.** Sheet music in shadow box with *Cloud Atlas* logo card. Framed 13 3/4 x 19". SIGNED ON LOGO CARD BY COMPOSERS TOM TWYKER, JOHNNY KLIMEK, AND REINHOLD HEIL. Sticker affixed to verso identifying item as property of Ravenswood Kinowerks, Inc. Provenance: The Wachowskis.

150/250

**3. Neo-Seoul Screen-Used Helmet from Cloud Atlas.** Original screen-used modified Gath helmet as worn by authorities in the futuristic dystopian city of 2144 Neo-Seoul. 8 1/2 x 8 x 7". Exhibits expected production wear from use. Provenance: The Wachowskis.

200/300



3





**4. Neo-Seoul Screen-Used Speeder from Cloud Atlas.** Original screen-used police speeder with attachments as used by authorities in the futuristic dystopian city of 2144 Neo-Seoul. 103 x 45 x 51". Exhibits expected production wear from use. This speeder can be seen during Sonmi-451's (Bae Doona) escape. Third party transportation required. Provenance: The Wachowskis.

6,000/8,000



**5. Papa Song Screen-Used Memory Egg Prop from Cloud Atlas.** Painted resin prop depicting the logo of 22nd century Neo-Seoul franchise restaurant Papa Song. 4 ¼ x 3". Exhibits expected production wear from use. The Papa Song franchise in *Cloud Atlas* is implied to be a future version of the McDonald's franchise. Its logo represents the smiling Chinese monk Budai. Provenance: The Wachowskis.

150/250

**6. St. George and the Dragon Screen-Used Prop from Cloud Atlas.** Original screen-used resin prop statue as seen atop Vyvyan Ayr's (Jim Broadbent) piano depicting St. George on horseback driving a lance into the mouth of the dragon, who writhes in agony upon the ground. 8 ½ x 11 x 3 ½". Exhibits expected production wear from use. Packaged in original prop box with asset number handwritten on paper label. Provenance: The Wachowskis.

300/500

**7. San Francisco Contract Screen-Used Prop from Cloud Atlas.** Original screen-used prop in shadow box of document with custom-made seal used by Adam Ewing (Jim Sturgess) and issued to Haskell Moore (Hugo Weaving) during the 1849 sequence in *Cloud Atlas*. Framed 26 ½ x 18". Exhibits expected production wear from use. Provenance: The Wachowskis.

200/300







8



9



13



10



11

12. **Sonmi-451 Heroic Maquette from Cloud Atlas.** Original resin maquette prop depicting Sonmi-451 (Bae Doona), a replicant turned revolutionary in 22nd century Neo-Seoul who is worshiped as a deity in 24th century Hawaii, in a heroic pose with one arm raised above her head in triumph. Height with stand 28". Provenance: The Wachowskis.

500/800

13. **Stone Table Screen-Used by the Abbess from Cloud Atlas.** Original screen-used wood and stone prop table inlaid with pastel plastic sea glass as seen inside of the Abbess's (Susan Sarandon) dwelling during the final segment of *Cloud Atlas*. 64 x 37 1/2 x 31". Exhibits expected production wear from use. Provenance: The Wachowskis. Third party transportation required.

1,500/3,000

14. **Tribal Mask Screen-Used Prop from Cloud Atlas.** Original screen-used prop mask of carved and painted wood as seen in Luisa Rey's (Halle Berry) apartment throughout the 1973 San Francisco sequence in *Cloud Atlas*. Height 25". Exhibits expected production wear from use. Provenance: The Wachowskis.

300/500



12

14

8. **Sonmi-451 Artifact Prop from Cloud Atlas.** Original artifact prop depicting Sonmi-451 (Bae Doona), a replicant turned revolutionary in 22nd century Neo-Seoul who is worshiped as a deity in 24th century Hawaii, amongst a field of stars. 62 x 74". Exhibits expected production wear from use. Provenance: The Wachowskis. Third party shipping required.

800/1,200

9. **Sonmi-451 Screen-Used Execution Chair from Cloud Atlas.** Original screen-used futuristic chair with one movable arm. 34 1/2 x 21 x 15 1/2". It was to this chair that Sonmi-451 (Bae Doona) was led to be executed while Boardman Mephi (Hugo Weaving) looked on. Exhibits expected production wear from use. Provenance: The Wachowskis. Third party transportation required.

800/1,200

10. **Sonmi-351 Screen-Used Execution Helmet from Cloud Atlas.** Original metal-plated cast resin prop helmet with tubing attachments. 17 x 12 x 8". Exhibits expected production wear from use. This helmet was used to execute the fabricant Sonmi-351 (Bae Doona) in the 2144 Neo-Seoul sequence in *Cloud Atlas*. Provenance: The Wachowskis.

400/600

11. **Sonmi-451 Screen-Used Execution Helmet from Cloud Atlas.** Original screen-used metal-plated cast resin prop helmet with tubing and trigger attachments. 16 x 13 1/2 x 8". Exhibits expected production wear from use. This helmet was used to execute the rebellious fabricant Sonmi-451 (Bae Doona) at the climax of the 2144 Neo-Seoul sequence in *Cloud Atlas*. Provenance: The Wachowskis.

400/600





15



17

15. Wind Chime Screen-Used Prop from *Cloud Atlas*. 2011. Original screen-used wind chime prop as seen in the home of Zachry Bailey (Tom Hanks) and Meronym (Halle Berry) in the final scene of *Cloud Atlas*. Diam. 23". Exhibits expected production wear from use. Provenance: The Wachowskis. Third party transportation required.

500/800

16. A Pair of Screen-Used Woven Drapery Props from *Cloud Atlas*. Original woven drapery props with beaded elements, one of which is mounted on a bamboo stick and can be seen behind Meronym (Halle Berry) in the home she shares with Zachry Bailey (Tom Hanks) at the end of *Cloud Atlas*. Largest 82 x 36". Exhibits expected production wear from use. Provenance: The Wachowskis.

300/500

17. Bone China Plate Gifted to Lana Wachowski in Celebration of the Chinese Premiere of *Cloud Atlas*. Shenzhen, China: Auratic Inc., 2013. Bone China plate with pictorial image of *Cloud Atlas* movie poster at center bordered with gilt floral designs. Boxed 13 x 13 x 3 3/4". INSCRIBED IN GILT "To Ms. Lana Wachowski / In celebration of the Chinese premiere / From Wilson Qiu / President and CEO / Dreams of Dragon Pictures Co., Ltd. / January 31, 2013." Provenance: The Wachowskis.

200/300



16



four of twelve

18



19



20

18. A Group of 12 Photographs from *Cloud Atlas*. High quality original photographs from *Cloud Atlas* depicting performers Doona Bae, Halle Berry, Jim Broadbent, Keith David, Tom Hanks, Susan Sarandon, Hugo Weaving, Ben Whishaw, and others in a variety of scenes from the 2012 film *Cloud Atlas*. Photographs by renowned film photographers Reiner Bajo and Jay Maidment. Framed 11 x 14". Reiner Bajo has worked as a still photographer in film and fashion since the mid-1980s, while Jay Maidment has photographed some of the most iconic films of the last 20 years, among them *Captain America: The First Avengers*, *Fantastic Beasts and Where to Find Them*, *Guardians of the Galaxy*, *Spider Man: Far From Home*, and *Wanted*. Many photographs blind stamped. Provenance: The Wachowskis.

250/350



21

19. Unused Costume and Prop Department Items from *Cloud Atlas*. A large group of items including wooden beads, trim of various colors with metallic ring elements, feathers, and plastic pastel sea glass which were used in the production of *Cloud Atlas*. Provenance: The Wachowskis.

250/350

20. A Group of 5 *Cloud Atlas Sextet* Records. New York: Sony Classical, 2012. One open and four sealed vinyl record albums of an original composition by Tom Tykwer, Johnny Klimek, and Reinhold Heil and performed by the MDR Leipzig Radio Symphony Orchestra conducted by Kristjan Jarvi. 12 1/2 x 12 1/2". Provenance: The Wachowskis.

60/90

21. A Group of 14 *Cloud Atlas* Jackets. Long-sleeved female size XXL jackets with a shooting star on left breast and "Cloud Atlas" in flowing script on the back. Provenance: The Wachowskis.

60/90





# JUPITER ASCENDING



22



24



23



25

22. **Abrasax Family Crest Screen-Used Prop from Jupiter Ascending.** Original screen-used crest prop depicting a stylized dragon rendered in gold against a red background with a golden border. Diam. 50". Exhibits expected production wear from use. This family crest was seen early in the film *Jupiter Ascending* at the home of Titus Abrasax. Provenance: The Wachowskis. Third party transportation required.

500/800

23. **Balem Abrasax Screen-Worn Necklace from Jupiter Ascending.** Original screen-used resin necklace prop painted in gold and worn by the villainous Balem Abrasax (Eddie Redmayne), Emperor of the House of Abrasax, in *Jupiter Ascending*. Diam. 5 ½". Exhibits expected production wear from use. Provenance: The Wachowskis.

400/600

24. **Balem Abrasax Screen-Worn Necklace from Jupiter Ascending.** Original screen-used resin necklace prop painted in silver and worn by the villainous Balem Abrasax (Eddie Redmayne), Emperor of the House of Abrasax, in *Jupiter Ascending*. Diam. 5 ½". Exhibits expected production wear from use. Provenance: The Wachowskis.

400/600

25. **Screen-Worn Necklace from Jupiter Ascending.** Original screen-used resin prop necklace painted in gold. Diam. 5 ½". Exhibits expected production wear from use. Provenance: The Wachowskis.

200/300





26



**26. Balem Abrasax Royal Guard Full Costume from Jupiter Ascending.** Original screen-used red silicone mask with cape, pants, chestplate, shirt and boots with futuristic ornate black, silver and gold detailing on mask, chestplate, and boots as worn by the Royal Guards of Balem Abrasax (Eddie Redmayne), Emperor of the House of Abrasax. Size 13 knee-length boots manufactured by Mountain Horse and modified with red, silver, and black paint with futuristic 3-D detailing. Overall height 76". Exhibits expected production wear from use. Provenance: The Wachowskis.

800/1,200



27



**27. Titus Abrasax Royal Guard Full Costume from Jupiter Ascending.** Original screen-used black silicone mask with cape, pants, chestplate, shirt and boots with futuristic ornate black, silver and gold detailing on mask, chestplate, and boots as worn by the Royal Guards of Titus Abrasax (Douglas Booth), younger brother of Balem. Size 11 knee-length boots manufactured by Mountain Horse and modified with red, silver, and black paint with futuristic 3-D detailing. Overall height 76". Exhibits expected production wear from use. Provenance: The Wachowskis.

800/1,200



28



29

**28. Titus Abrasax Screen-Used Golden Dog Prop from Jupiter Ascending.** Original screen-used golden dog prop as seen in the dining room of Titus Abrasax's (Douglas Booth) luxurious space cruiser. 40 x 43 x 17". Exhibits expected production wear from use. One half of a pair; the other half is currently in the possession of Lana Wachowski. Provenance: The Wachowskis. Third party transportation required.

600/800

**29. Caine Wise Screen-Worn Latex Ears from Jupiter Ascending.** Original pair of screen-used silicon latex ear props enclosed in a clear acrylic box worn by Channing Tatum as Caine Wise in *Jupiter Ascending*. Height 2 1/2". Exhibits expected production wear from use, blending deterioration from make-up application. Provenance: The Wachowskis.

300/500



30



31

**30. Caine Wise Screen-Worn Gravity Boots from Jupiter Ascending.** Original pair of screen-worn size 11 boots manufactured by Elsinore with cast resin modifications as worn by Caine Wise (Channing Tatum) in *Jupiter Ascending*. Tags marked "Hero" inside of each boot. Height 14 1/2". Exhibits expected production wear from use. Provenance: The Wachowskis.

300/500

**31. Caine Wise Screen-Used Prop Gun from Jupiter Ascending.** Original screen-used prop gun constructed of urethane rubber as wielded by Caine Wise (Channing Tatum) during action sequences in *Jupiter Ascending*. Length 11". Exhibits expected production wear from use. Provenance: The Wachowskis.

200/300





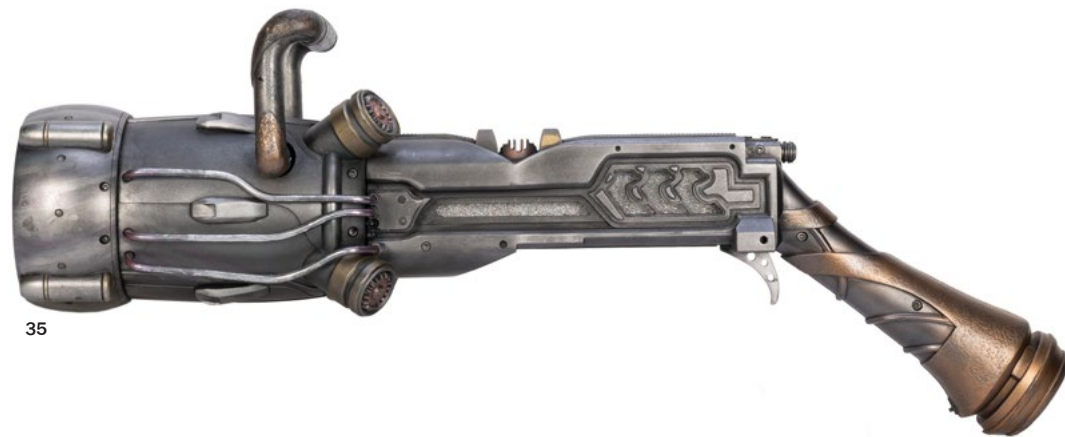
32



33



34



35



36



37

32. **Stinger Apini Screen-Used Stunt Rifle from Jupiter Ascending.** Original screen-used stunt rifle constructed of urethane rubber and used by Stinger Apini (Sean Bean) throughout *Jupiter Ascending*. 24 x 8 ½ x 2". Exhibits expected production wear from use. Provenance: The Wachowskis.

500/800

33. **Bounty Hunter Screen-Used Gun from Jupiter Ascending.** Original screen-used resin prop gun with metal, hydraulic and electronic elements as used by the hunters during the attack on Stinger Apini's (Sean Bean) hideout. 22 x 12 x 4 ½". Exhibits expected production wear from use. Provenance: The Wachowskis.

500/800

34. **Falque Screen-Used Sonic Cannon from Jupiter Ascending.** Original screen-used resin prop sonic cannon wielded by Falque (Spencer Wilding) during the attack on Stinger Apini's (Sean Bean) hideout. Length 36". Exhibits expected production wear from use. Provenance: The Wachowskis. Third party transportation required.

800/1,200

35. **Screen-Used Bore gun from Jupiter Ascending.** Original screen-used stunt rifle constructed of cast resin with metal and electronic elements as used during the attack on Stinger Apini's (Sean Bean) hideout. Wide barrel with rotating center and blue lights activate when trigger is pulled. 31 x 9 x 7". Exhibits expected production wear from use. Provenance: The Wachowskis.

1,000/2,000

36. **Screen-Used Gun from Jupiter Ascending.** Original screen-used gun constructed of cast resin with metallic elements including a rotating cylinder. 19 x 14 x 7". Exhibits expected production wear from use. Provenance: The Wachowskis.

500/800

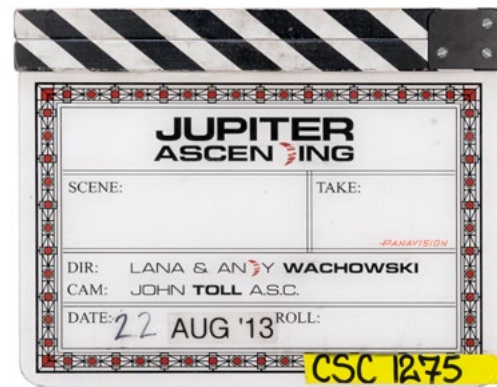
37. **Screen-Used Gun from Jupiter Ascending.** Original screen-used gun constructed of cast resin with metallic elements. 22 x 8 ½ x 6". Exhibits expected production wear from use. Decorative attachments repaired. Provenance: The Wachowskis.

300/500





38



39



41



40

**38. A Group of 5 Screen-Used Props from Jupiter Ascending.** Original screen-used props including Caine Wise's (Channing Tatum) evac pack, a cast resin prop knife, a pair of Advocate Bob identification cards, *General Astronomy: Discovering A Universe* prop book, Stinger Apini's (Sean Bean) prop dog tag, and a cast resin and plastic tablet as used by the Seal and Signet Minister (Terry Gilliam) when he bestows upon Jupiter her title to Earth. All items exhibit expected production wear from use. Provenance: The Wachowskis.

400/600

**39. Production-Used Clapperboard from Jupiter Ascending.** Original acrylic clapperboard with printed label used in the filming of the Wachowskis' 2015 motion picture *Jupiter Ascending* dated August 22, 2013. 12 x 15". Exhibits expected production wear from use. Clapperboard notes cinematography work by John Toll, whose film credits also include *Braveheart*, *Almost Famous*, *Tropic Thunder*, *Iron Man 3*, and *The Matrix Resurrections*. Provenance: The Wachowskis.

300/500

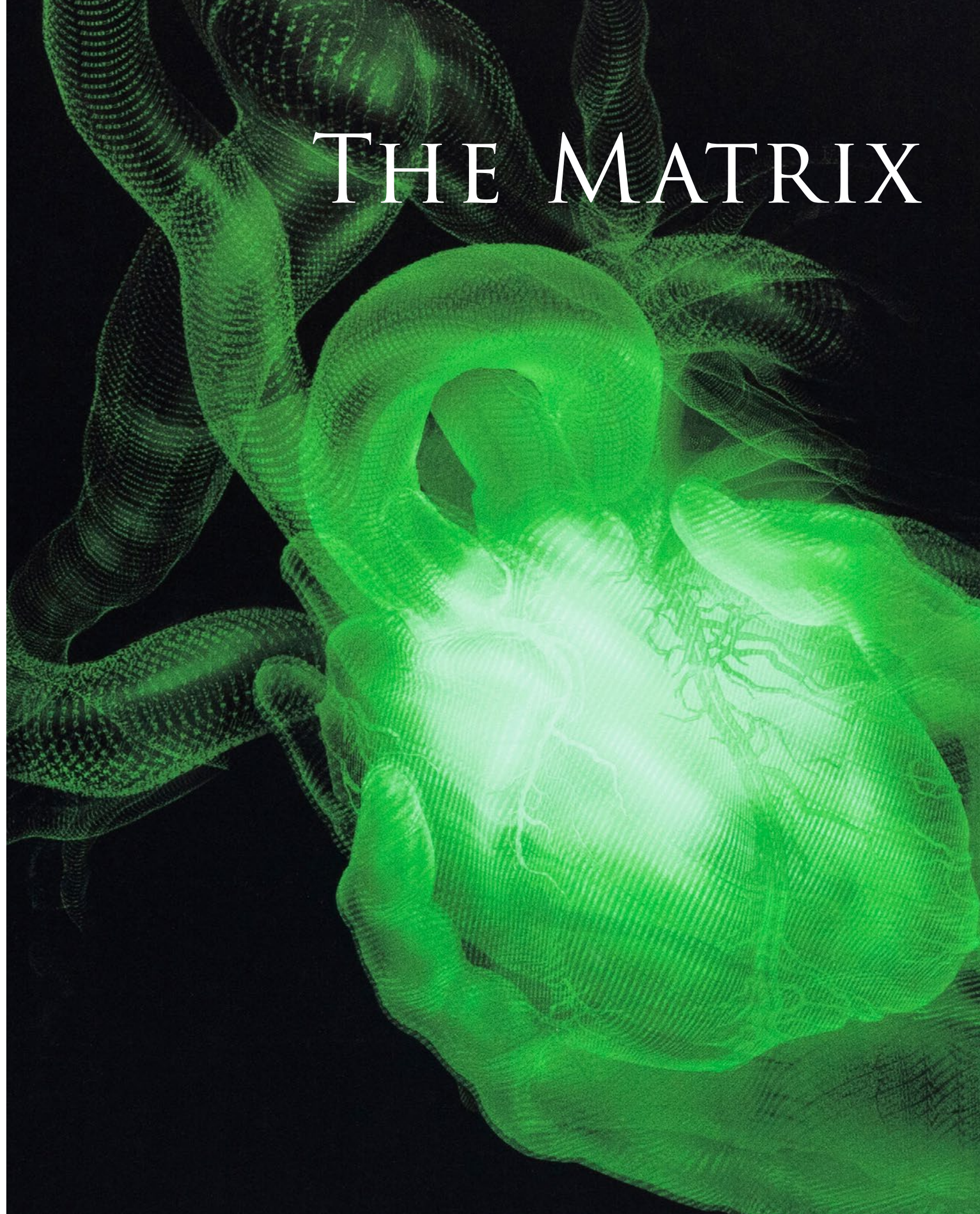
**40. Call Sheet from Jupiter Ascending.** Original call sheet dated Thursday August 22, 2013 for green screen shots of the cornfield battle, the shadow chase, and interior and exterior shots of Balem Abrasax's refinery as used during the production of *Jupiter Ascending*. Framed and matted 19 x 13". Barcode on frame verso identifying piece as property of Ravenswood Kinowerks, Inc. Provenance: The Wachowskis.

80/150

**41. A Large Group of Promotional T-Shirts from Jupiter Ascending.** Approximately 75 female size XL promotional t-shirts from *Jupiter Ascending* with film logo on front and the quote "You don't treat your cousin like a chicken!" on the back. Provenance: The Wachowskis.

100/200

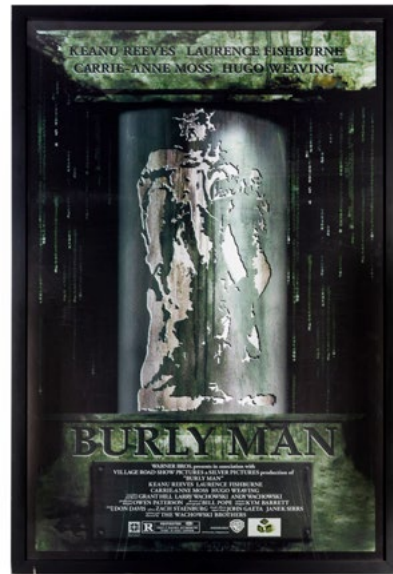
# THE MATRIX



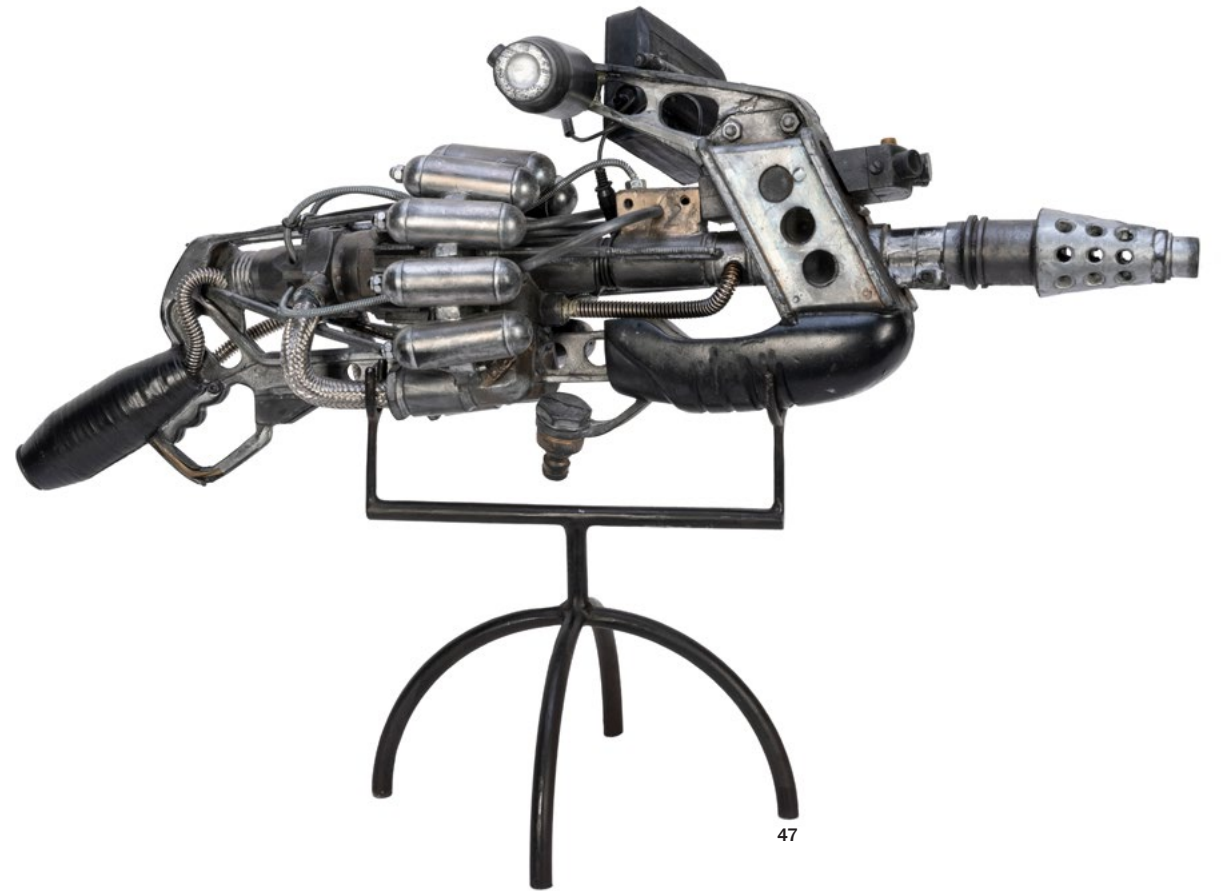




42



45



47



43

42. 1967 Pontiac Firebird Screen-Used License Plates from *The Matrix Reloaded*. A pair of original screen-used prop license plates number BQ231 which appeared on the 1967 Pontiac Firebird driven by Ghost and Niobe during a pivotal chase scene in *The Matrix Reloaded*. 6 x 12". Exhibits expected production wear from use. Provenance: The Wachowskis.

400/600

43. Armored Personnel Unit Concept Maquette from *The Matrix Reloaded*. Original concept maquette of the Armored Personnel Unit (APU) model seen in *The Matrix Reloaded* and *The Matrix Revolutions*. 19 x 18 x 12 1/2". Exhibits minor age and wear. The earliest APUs were used by UN forces against the machines at the start of the Machine War. Following the enslavement of humanity new APUs were constructed from whatever spare parts were available, and although they provided a strong defense of Zion they were in the end unable to withstand the assault of the Sentinels. Provenance: The Wachowskis. Third party transportation required.

800/1,200

44. Armored Personnel Unit Concept Maquette from *The Matrix Reloaded*. Original concept maquette of the Armored Personnel Unit (APU) model seen in *The Matrix Reloaded* and *The Matrix Revolutions*. 19 x 18 x 12 1/2". Exhibits minor age and wear. Sticker affixed to base identifying maquette as property of Ravenswood Kinowerks, Inc. The earliest APUs were used by UN forces against the machines at the start of the Machine War. Following the enslavement of humanity new APUs were constructed from whatever spare parts were available, and although they provided a strong defense of Zion they were in the end unable to withstand the assault of the Sentinels. Provenance: The Wachowskis. Third party transportation required.

800/1,200

45. Burly Man Screen-Used Prop Poster from *The Matrix Reloaded* and *The Matrix Revolutions*. Original screen-used background prop poster as seen in *The Matrix Reloaded* and *The Matrix Revolutions* with original cast and production information and iconic numerical code backdrop from the first *Matrix* film. Framed 47 x 31". Barcode on frame verso identifying piece as property of Ravenswood Kinowerks, Inc. Provenance: The Wachowskis.

200/400

46. Enter the Matrix Pachinko Machine. Aichi Prefecture, Japan: Daiichi, 2009. Pachinko machine with 3-D screen and animatronics featuring archival footage of stars Keanu Reeves, Carrie-Anne Moss, Laurence Fishburne, and Hugo Weaving. 34 x 11 1/2 x 22". Includes transformer unit, pachinko balls, and key. Not tested. Provenance: The Wachowskis. Third party transportation required.

400/600

47. Lightning Rifle Prop from *The Matrix*. Iconic original screen-used resin, rubber and foam prop model as seen wielded by Cypher (Joe Pantoliano) against Tank (Marcus Chong) and Dozer (Anthony Ray Parker) when he reveals himself as an ally of Agent Smith (Hugo Weaving) in *The Matrix*. 18 x 28 x 10". Exhibits expected production wear from use. Barcode identifying prop as property of Ravenswood Kinowerks, Inc. on stand. Provenance: The Wachowskis. Third party transportation required.

2,000/4,000



46



44





48

**48. Nebuchadnezzar Concept Maquette from The Matrix.** Original concept maquette of the *Nebuchadnezzar*, a hovercraft captained by Morpheus (Laurence Fishburne) in *The Matrix* and *The Matrix Reloaded*. Length 43". Exhibits wear from age and use. One piece partially detached, exposing inner wiring. One of the most iconic vehicles from *The Matrix* franchise, the *Nebuchadnezzar* was cited in *Transpersonal Management: Lessons from the Matrix Trilogy* as representative of the machines' arrogance in claiming divinity as well as the warrior spirit of the rebels in their fight for humanity's liberation from the machines. Provenance: The Wachowskis. Third party transportation required.

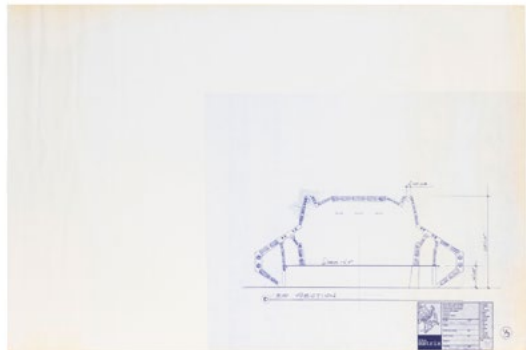
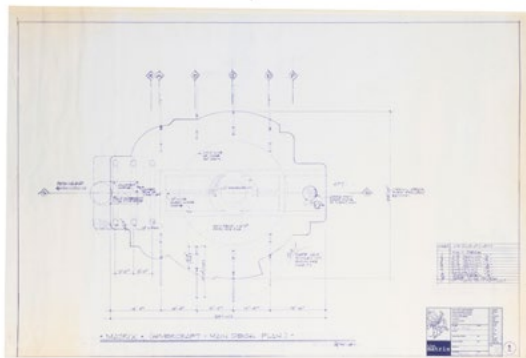
1,500/3,000



49

**49. Nebuchadnezzar Designation Plate Concept Maquette from The Matrix.** Original maquette nameplate from the *Nebuchadnezzar*, a hovercraft captained by Morpheus (Laurence Fishburne) in *The Matrix* and *The Matrix Reloaded*, with "The Matrix" and the production years below. 15 x 21". Exhibits wear from age and use. Provenance: The Wachowskis.

400/600

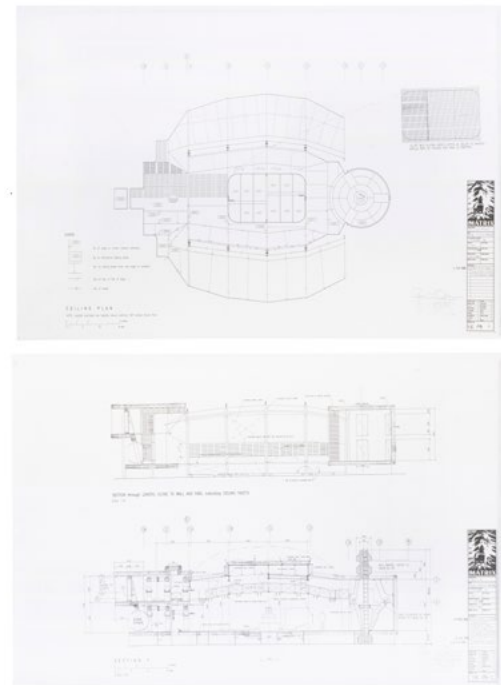


50

two of fifteen

**50. Nebuchadnezzar Original Concept Blueprints from The Matrix.** A group of 15 original blueprints created during initial production phases of *The Matrix* depicting interiors of the *Nebuchadnezzar* including the main deck, rib sections, and core. 24 x 35 1/2". Toning, light wear along extremities. Storage tube includes barcodes identifying contents as property of Ravenswood Kinowerks, Inc. These plans come from the earliest phases of development and lists Beau Marks as a producer of the film. Provenance: The Wachowskis.

400/600



two of nineteen

51

**51. Nebuchadnezzar Original Concept Blueprints from The Matrix.** A group of 19 original blueprints created during later production phases of *The Matrix* depicting interiors of the *Nebuchadnezzar*. 24 x 35 1/2". Toning, light wear along extremities. Storage tube includes barcodes identifying contents as property of Ravenswood Kinowerks, Inc. These plans come from the earliest phases of development. Provenance: The Wachowskis.

400/600

**52. Samsung Model SPH-N270 Matrix Reloaded Movie Tie-In Phone.** Seoul: Samsung Telecommunications America, 2003. Fully functional *The Matrix Reloaded* tie-in phone, original in box. 8 x 5 1/2 x 2". LIMITED EDITION one of 2,000 copies issued in North America. Manufactured as a fully-functional phone, the SPH-N270 was unique as it featured a spring-loaded earpiece which snapped up to reveal a screen with a scrolling green code against a black background. When the phone is turned on a message reading "Hello" pops up and when it is turned off the message reads "Good-bye," reminiscent of Neo's first encounter with *The Matrix*. Provenance: The Wachowskis.

400/600



52

**53. Chateau Showdown Screen-Used Viking Bust Prop from The Matrix Reloaded.** Original plaster prop bust depicting a Viking with his face contorted in a furious scream as seen in the foyer of The Merovingian's chateau during Neo's iconic battle against his henchmen in *The Matrix Reloaded*. 31 x 24 x 14". Exhibits expected production wear from use. Paint loss, chips, scrapes. Barcode identifying prop as property of Ravenswood Kinowerks, Inc. on base. The face of the screaming Viking was modeled after that of supervising art director Hugh Bateup, who cast his own face into the bust; it also appeared in 2008's *Speed Racer*, making it the only prop to appear in two different Wachowski films. Provenance: The Wachowskis. Third party transportation required.

1,200/3,000



53





54



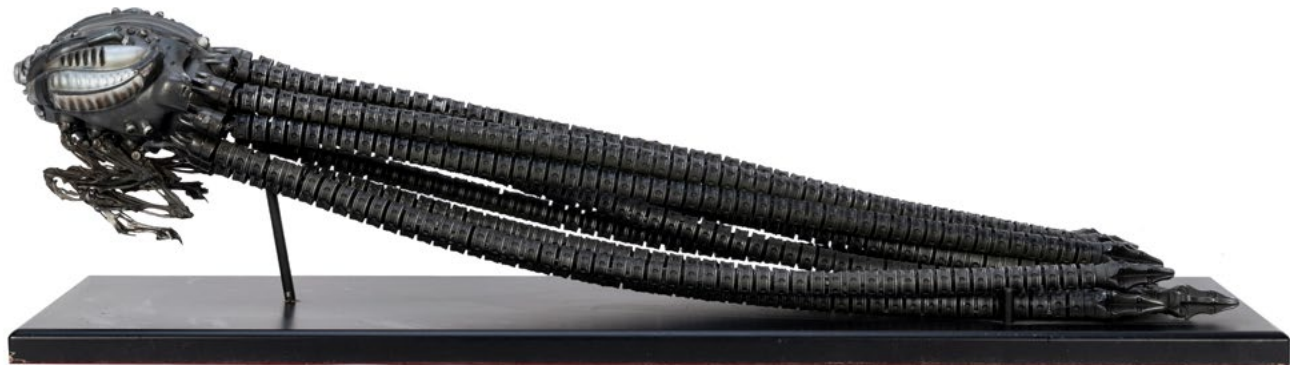
55



56



57



58

54. **A Pair of Chateau Showdown Screen-Used Weapon Props from The Matrix Reloaded.** Original metal weapons on wooden stick props as seen wielded by The Merovingian's henchmen during their battle with Neo in *The Matrix Reloaded*. Tallest 72". Exhibits expected production wear from use. Upper section of wooden stick on spear repaired. Original production label affixed to larger weapon. Provenance: The Wachowskis. Third party shipping required.

600/800

55. **Sentinel Concept Maquette from The Matrix.** Original resin concept maquette of the Sentinel autonomous machine, tentacles flying as it smashes its way across an industrial platform in pursuit of rebels. 16 x 23 x 11". This maquette was constructed for reference use during the effects design phases of *The Matrix* original trilogy. Exhibits minor age and wear. Provenance: The Wachowskis. Third party transportation required.

1,200/3,000

56. **Sentinel Concept Maquette from The Matrix.** Original resin concept maquette of the Sentinel autonomous machine, tentacles flying as it smashes its way across an industrial platform in pursuit of rebels. 28 x 16 x 17". Exhibits minor wear and age. This maquette was constructed for reference use during the effects design phases of *The Matrix* original trilogy. Provenance: The Wachowskis. Third party transportation required.

1,200/3,000

57. **Sentinel Concept Maquette from The Matrix.** Original resin concept maquette of the Sentinel autonomous machine with curled tentacles. Diam. 14". Exhibits some age and wear. One tentacle and claw broken away. This maquette was constructed for reference use during the effects design phases of *The Matrix* original trilogy. Provenance: The Wachowskis. Third party transportation required.

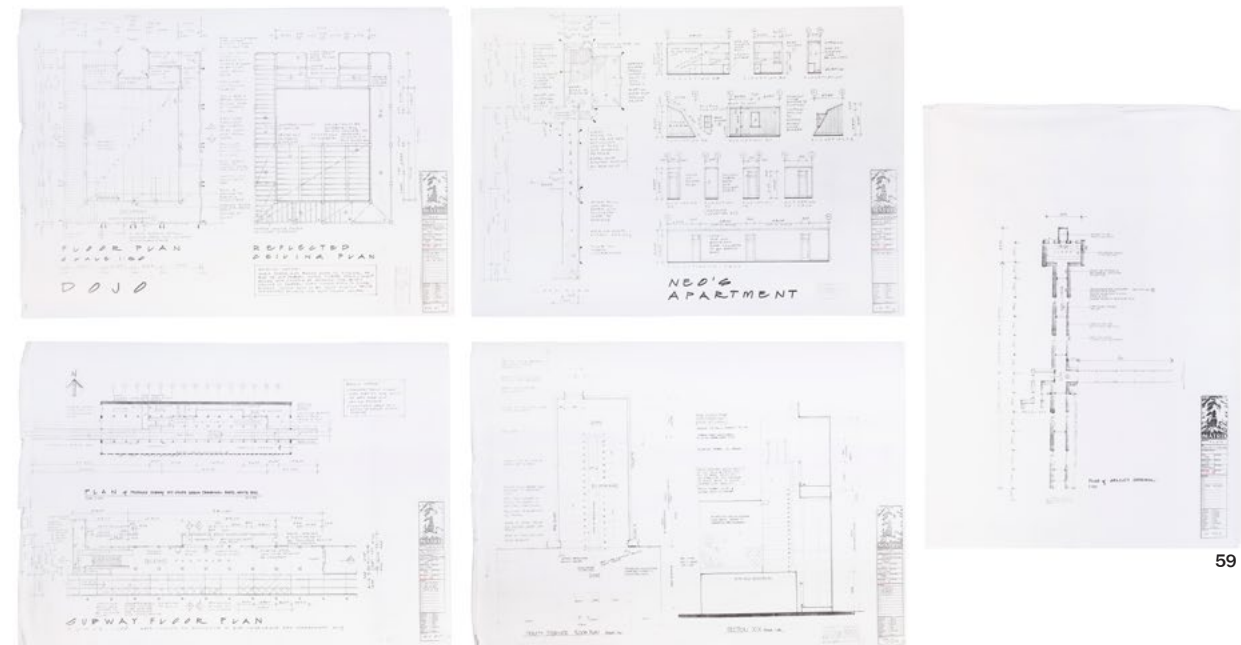
1,200/3,000

58. **Sentinel Concept Maquette from The Matrix.** Original full-length resin concept maquette of the Sentinel autonomous machine. 28 x 8 x 6 1/2". Exhibits minor age and wear. This maquette was constructed for reference use during the effects design phases of *The Matrix* original trilogy. Provenance: The Wachowskis. Third party transportation required.

1,200/3,000

59. **Original Production Concept Blueprints from The Matrix.** A group of 19 original blueprints of various locations as seen throughout *The Matrix* such as Neo's apartment, the Oracle's apartment, Trinity's stairs, and the dojo created during initial production phases, each date stamped in red 18 December 1997. Largest 23 x 33". Exhibits expected production wear. Storage tube includes barcodes identifying contents as property of Ravenswood Kinoworks, Inc. Provenance: The Wachowskis.

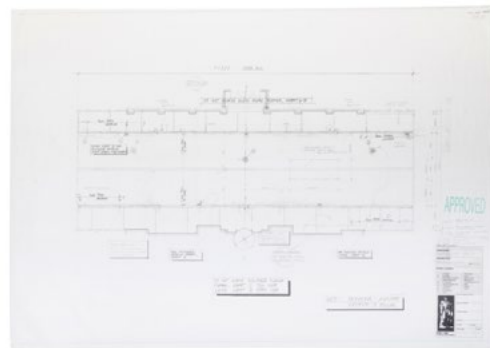
300/500



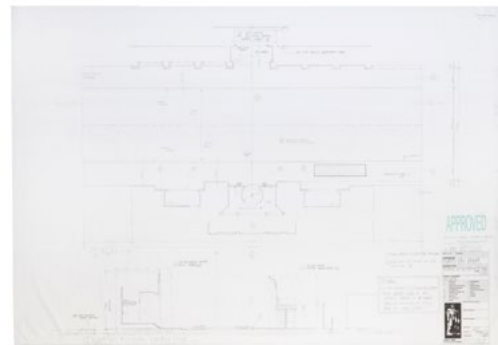
59

five of nineteen





60



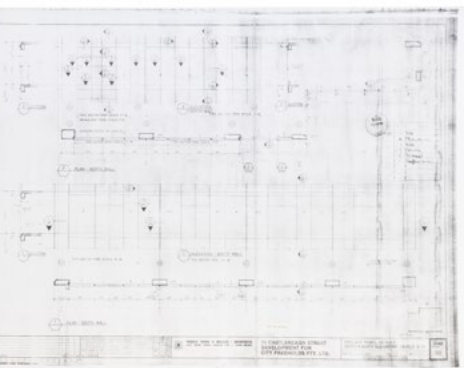
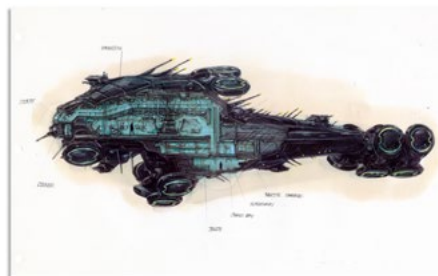
64



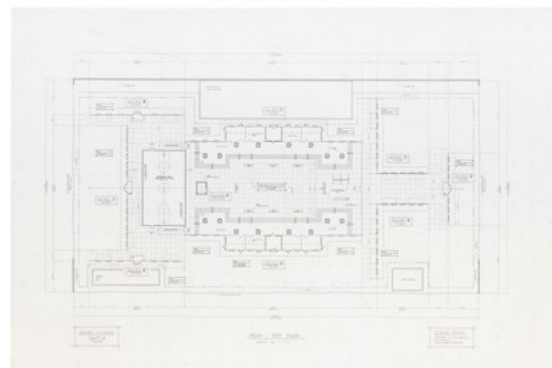
61



62



63



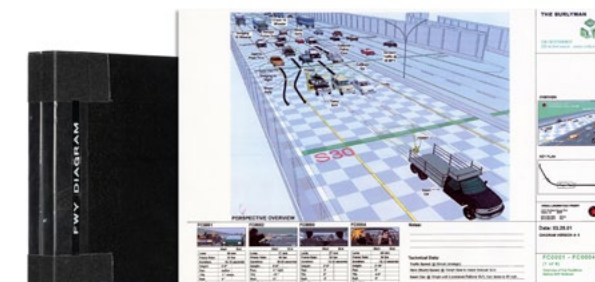
two of four

60. Original Production Concept Blueprints of City Streets from *The Matrix*. A pair of original blueprints created during initial production phases of *The Matrix* depicting street plans on which key scenes would be shot and detailing placement of notable features with one including the notation, "Fixing required to surface Smith mannequins of [sp.] pavement." 48 x 33". Each blueprint is stamped "APPROVED." Storage tube includes barcodes identifying contents as property of Ravenswood Kinowerks, Inc. Provenance: The Wachowskis. 300/500

61. Original Production Concept Illustrations from *The Matrix*. One binder of 42 concept illustrations as used by the design team of *The Matrix* films when constructing props and sets, including early images of sentinels, pods, interior and exterior images of the *Nebuchadnezzar*, and others. 18 x 11 1/2". First page partially disbound. Each illustration is stamped with "APOC Productions" on verso. Label identifying binder as property of Beau Marks on inside of front cover. Beau Marks was one of the original producers of the film; ultimately he would not be involved with the finished film. Provenance: The Wachowskis. 300/500

62. Original Production Concept Illustrations from *The Matrix*. One binder of concept illustrations as used by the design team of *The Matrix* films when constructing props and sets, including early images of sentinels, pods, interior and exterior images of the *Nebuchadnezzar*, and others. 18 x 11 1/2". Each illustration is stamped with "APOC Productions" on verso. Includes post-it notes on many pages from a production team member identifying pieces and locations. Provenance: The Wachowskis. 300/500

63. Burly Brawl Original Production Concept Blueprint from *The Matrix Reloaded*. Original concept blueprint for the stage set on which the iconic Burly Brawl scene from *The Matrix Reloaded* was filmed with 3 accompanying blueprints of various buildings in Australia on which the set was based acquired for reference use by set designers during initial stages of production. Largest 33 x 42". Provenance: The Wachowskis. 400/600

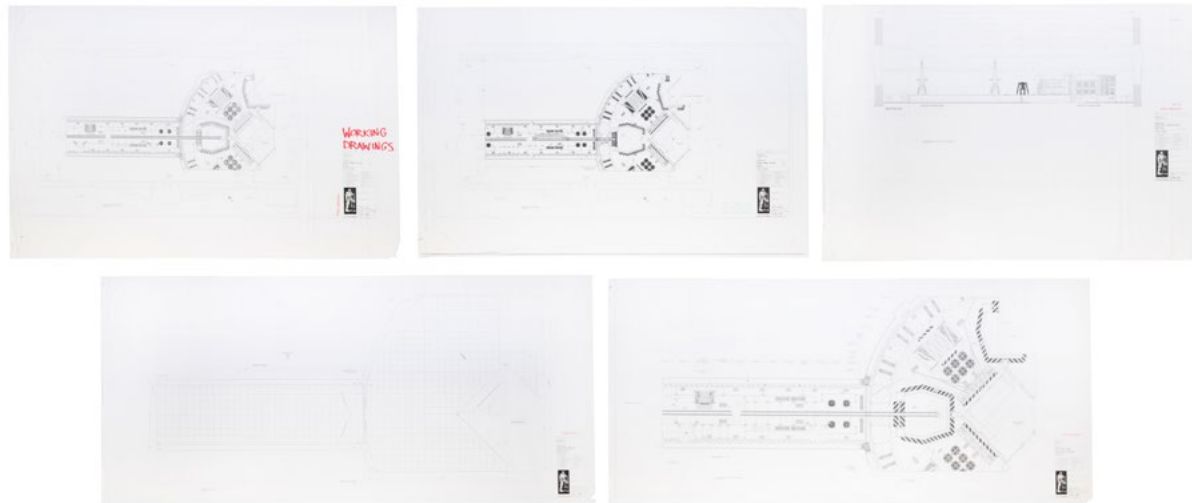


65

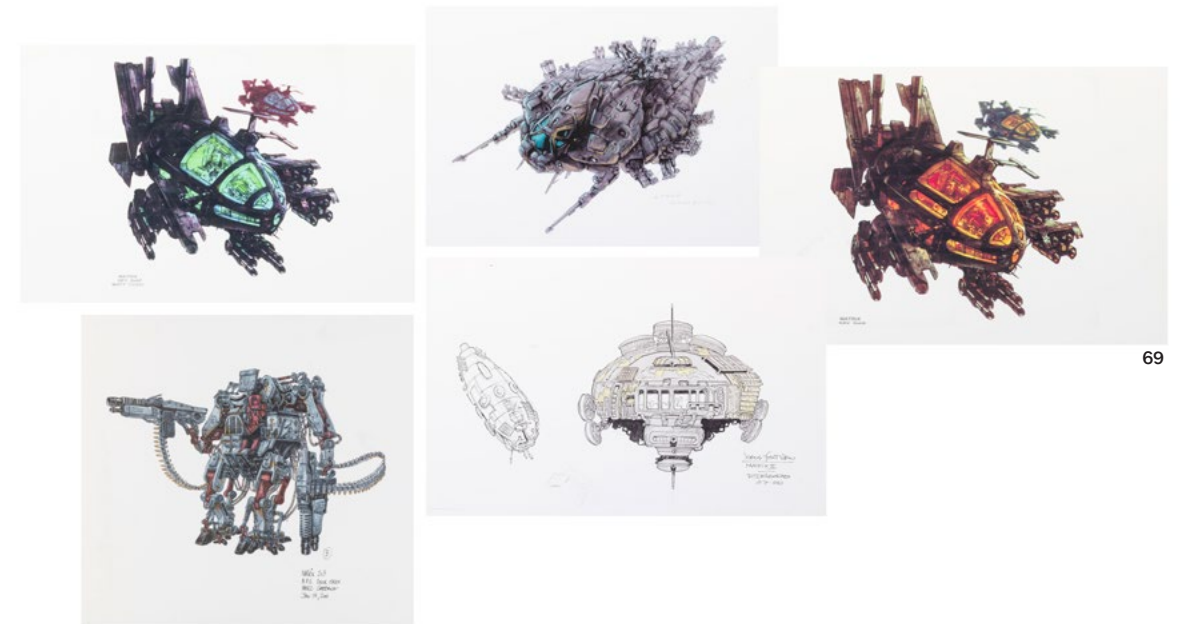
64. Original Production Concept Blueprints, Photographs, and Concept Art from *The Matrix* and *Sequels*. A group of 20 items including original concept blueprints for the stage set on which the iconic Burly Brawl scene from *The Matrix Reloaded* was filmed, a reference photograph of Hugo Weaving as Mr. Smith with two doubles, original concept designs for the park scene by Owen Paterson, and production sketches of *Mjolnir* by Simon Murton. Largest 30 x 43". Reference stickers on versos of each production sketch identifying them as property of Eon Entertainment; many blueprints stamped "APPROVED." Provenance: The Wachowskis. 300/500

65. Original Production Freeway Chase Scene Maps and Diagrams from *The Matrix Reloaded*. A large group of 90 pages with detailed maps and diagrams laying out the intricate details of the thrilling freeway chase between rebels and their pursuers from *The Matrix Reloaded* with notations on sequence timing, vehicle positions, camera angles, and insertion of digital effects. 12 x 18". All pages marked with logo of EON Entertainment of Venice, CA. Provenance: The Wachowskis. 400/600



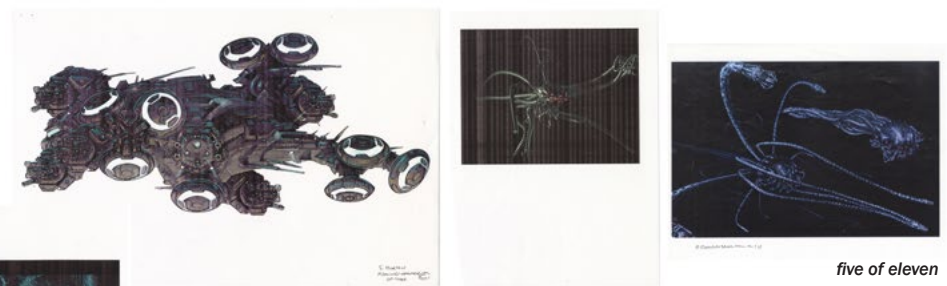


66



69

five of twenty seven



five of eleven



67



70



five of fourteen

68

66. Zion Original Production Blueprints from *The Matrix Reloaded*. A group of 5 original blueprints created during initial production phases of *The Matrix Reloaded* with "Preliminary" stamped in red on each. Largest 33 x 64". Storage tube includes barcodes identifying contents as property of Ravenswood Kinoworks, Inc. Provenance: The Wachowskis. 300/500

67. A Group of 11 Original Concept Illustrations from *The Matrix and Sequels*. Concept art depicting Sentinels, hovercrafts, and action scene storyboards from *The Matrix Reloaded* and *The Matrix Revolutions* in full color. 11 x 17". Provenance: The Wachowskis. 100/200

68. A Group of 14 Original Concept Illustrations from *The Matrix and Sequels*. Concept art depicting The Dock and other areas rendered in full color. Includes duplicates. 11 x 17". Provenance: The Wachowskis. 100/200

69. A Group of 27 Original Concept Illustrations from *The Matrix and Sequels*. Concept art depicting Zion, Armored Personnel Units, the Logos, and others. Largest 13 1/2 x 17 1/2". Two original prints bear Post-it notes asking that illustrations not be included in books about the making of *The Matrix* films. Provenance: The Wachowskis. 150/250

70. A Large Group of Battle of Zion Original Concept Art and Drawings from *The Matrix Revolutions*. Approximately 75 individual pieces of hand-drawn and printed concept artworks in black and white and color depicting various scenes from the Battle of Zion and The Merovingian's chateau. Includes duplicates. Largest 11 x 17". Provenance: The Wachowskis. 250/350





71



73



72



74

71. A Large Group of Original Concept Art and Drawings from *The Matrix Reloaded* and *The Matrix Revolutions*. Approximately 100 individual pieces of hand-drawn, printed, and computer-generated concept artworks and storyboards in black and white and in color depicting Club Hell, the Armored Personnel Unit, the Sentinels, and others. Many original drawings by Mark Gabbana, whose other notable projects have included *Hellboy*, *Beowulf*, and the *Star Wars* prequel trilogy. Provenance: The Wachowskis.

250/350

72. A Large Group of Original Concept Art and Drawings from *The Matrix Reloaded* and *The Matrix Revolutions*. Approximately 100 individual pieces of hand-drawn, printed, and computer-generated concept artworks and storyboards in black and white and in color depicting Club Hell, the Keymaker's Cell, the Dock, the Hand of God, and others. Many original drawings by Mark Gabbana, whose other notable projects have included *Hellboy*, *Beowulf*, and the *Star Wars* prequel trilogy. Provenance: The Wachowskis.

400/600

73. Concept Art from *The Matrix Reloaded* and *The Matrix Revolutions* Official Announcement Ad Campaign. A group of 12 official concept art pieces housed in a large folder with logos for *The Matrix Reloaded* and *The Matrix Revolutions* with images of teaser posters and larger promotional campaigns to be staged in Times Square and in movie theaters. 18 x 12 1/2". Includes note from "Jen" on Concept Arts letterhead addressed to "Michelle" informing her that Joel [Silver, producer of *The Matrix* trilogy] would like these pieces sent to Australia. Provenance: The Wachowskis.

250/350

74. BINNIE, J.T. Performer Red Cross Marker from *The Matrix*. 1999. Oil on canvas painting made from red tape cross used during filming of *The Matrix* to mark positions of actors Keanu Reeves, Laurence Fishburne, Carrie-Anne Moss, Hugo Weaving, and others during action sequences. 18 x 15". INSCRIBED BY ARTIST on verso with title and date. Barcode on verso identifying piece as property of Ravenswood Kinoworks, Inc. Provenance: The Wachowskis.

60/90



75



76



77

75. A Trio of *The Ultimate Matrix* DVD Collections. 2004. A collection of 10 DVDs boxed and in original shrink wrap comprising all three original films from *The Matrix* series as well as *The Animatrix*, *The Burly Man Chronicles*, and *The Zion Archive* with resin bust of Keanu Reeves as Neo. Boxed 11 x 9 1/2 x 14". These copies were sent to the Wachowskis upon release, with two having never been opened. Provenance: The Wachowskis.

100/200

76. A Pair of Trinity Models from *The Matrix*. Cincinnati: N2 Toys, 2000. A pair of models depicting Trinity (Carrie-Anne Moss) poised in mid-air and preparing to deliver a flying kick during her escape from agents at the beginning of *The Matrix*. Two boxes retain remnants of original address labels. Provenance: The Wachowskis.

100/200

77. A Large Group of Action Figures from *The Matrix*. Approximately 75 action figures and models manufactured by MacFarlane Toys, N2 Toys, and others depicting various characters and scenes from *The Matrix* trilogy, among them Neo dodging bullets during the famous shoot-out scene, Trinity, Morpheus, the Sentinels, Mifune during his last stand against the machines, Agent Smith, and others. Some duplicates. All figures sealed in original packaging. Bent cards, toning to plastic in some examples. Overall condition fair to good. Provenance: The Wachowskis.

300/500





# SENSE8



78



79



80



81

**78. Angelica Turing Screen-Used Drug Kit from Sense8.** A pair of hypodermic needles, a bent and burnt spoon, a rubber band, and a piece of aluminum foil housed in a plain green box as used by Angelica Turing (Daryl Hannah) in *Sense8*. Includes original production bag with label. 6 ¾ x 4 ½ x 2 ½". Exhibits expected production wear from use. Angelica Turing was a sensate who gave birth to two clusters and would commit suicide immediately after birthing the August 8 cluster in order to protect them from the BPO. Provenance: The Wachowskis. **200/300**

**79. Angelica Turing Screen-Worn Dresses from Sense8.** A pair of cream-colored dresses with lace elements as worn by Angelica Turing (Daryl Hannah) throughout the hit Netflix series *Sense8*. Original production tag included. Exhibits expected production wear from use. Angelica Turing was a sensate who gave birth to two clusters and would commit suicide immediately after birthing the August 8 cluster in order to protect them from the BPO. Provenance: The Wachowskis. **600/800**

**80. Baptismal Font Screen-Used Background Prop from Series Premiere of Sense8.** Wood construction background prop as seen in the opening scene of *Sense8* in which Angelica Turing (Daryl Hannah) wakes up in a dilapidated church and later when Will Gorski (Brian J. Smith) and his partner examine the church for clues as to Angelica's whereabouts. Height 51". Exhibits expected production wear from use. Provenance: The Wachowskis. Third party transportation required. **800/1,200**

**81. Blocker Capsules With Pill Press from Sense8.** Original screen-used gelatin capsules with an acrylic pill press as seen in the season 2 episode "You Want A War?" when Kala Dandekar (Tina Desai) produced blockers for herself and other sensates. Exhibits expected production wear from use. Provenance: The Wachowskis. **150/250**





82



83



88



84

82. Capheus Onyango Passport Props from Sense8. A pair of prop passport identification papers for Capheus Onyango (Toby Onwumere). 5 x 3 1/2". Exhibits expected production wear from use. Capheus Onyango is part of the August 8 cluster who begins the series as driver of the Van Damn bus who eventually finds himself in the political spotlight. Provenance: The Wachowskis.

60/90

83. Cellar keys Screen-Used Prop from Sense8. A group of 6 keys as used by Will Gorski (Brian J. Smith) to unlock the cell in which Mr. Whispers (Terrance Mann) is being held prisoner during the series finale of Sense8. Exhibits expected production wear from use. Provenance: The Wachowskis.

100/200

84. Coratussin Cough Syrup and Sacred Silk Glide Tampon Box Screen-Used Props from Sense8. Screen-used cough syrup and tampon box props used by Amanita "Neets" Caplan (Freema Agyeman) to help Nomi Marks (Jamie Clayton) escape from government agents in the season 1 episode "We Will Be Judged By the Courage of Our Hearts." Exhibits expected production wear from use. Provenance: The Wachowskis.

200/300

85. Drag Queen Photograph from Sao Paolo Pride Parade Scene in Sense8. Full color photograph of 6 six drag queens during the Sao Paolo pride parade sequence at which Lito Rodriguez (Miguel Angel Silvestre) comes out. Framed and matted, 19 x 25". Provenance: The Wachowskis.

60/90



85



87

86. Give Til It Heart Screen-used Prop from Sense8. Screen-used heart-shaped prop with ribbon reading "Give til it heart" across the top and a pink fabric piece in the shape of a vagina at center as used by Amanita "Neets" Caplan (Freema Agyeman) during the fundraising scene of the first episode of Sense8. 12 x 12 x 3". Exhibits expected production wear from use. Provenance: The Wachowskis.

200/400



86

87. Hallelujah Sheet Music Signed by Gary Fry as Used in Sense8. Title page of Leonard Cohen's "Hallelujah" framed and mounted on mat designed after the Chicago flag. 20 x 17". INSCRIBED BY GARY FRY, "Lana - A thrill to be a part of this! Thanks - Gary Fry." The cover of Leonard Cohen's "Hallelujah" was arranged by Gary Fry and recorded by Chicago's Apollo Chorus with Daniel Martin Moore on lead vocals. It was played during the Sense8 holiday episode "Happy F\*cking New Year." Provenance: The Wachowskis.

150/250



89

88. Illinois and California License Plates from Sense8. A group of 18 plastic and metal screen-used Illinois and California license plates as used by the characters Jonas Maliki (Naveen Andrews), Will Gorski (Brian J. Smith), Mr. Whispers (Terrance Mann) and others in numerous episodes of Sense8. 6 1/2 x 12". Exhibits expected production wear from use. Provenance: The Wachowskis.

150/250

89. Lila Facchini Screen-Worn Bracelets and Earrings from Sense8. A group of 4 gold-colored prop bracelets and a pair of earrings as worn by Lila Facchini (Valeria Bilello) during the series finale of Sense8. Exhibits expected production wear from use. The "Right Hand" to Sebastian Fuchs, Lila Facchini is a secondary antagonist who has made a deal with the BPO to give her immunity from their mission to destroy all sensates. Provenance: The Wachowskis.

100/200





91



90



95



92



93



94



96



97

90. Mr. Whispers Screen-Worn Prototype Helmet Prop from *Sense8*. Original screen-worn resin helmet as seen throughout the second season of *Sense8* during flashback sequences. In original production box 12 ½ x 17 x 15". Exhibits expected production wear from use. Mr. Whispers is the primary antagonist of *Sense8* and leads an organization whose primary mission it is to eliminate all sensates. Provenance: The Wachowskis.

400/600

91. Mr. Whispers Screen-Worn Watch from *Sense8*. Original screen-worn prop Audemars Piguet silver watch as seen on the wrist of Mr. Whispers throughout *Sense8*. Diam. 3". One screw missing from bezel. Exhibits expected wear from production use. Mr. Whispers is the primary antagonist of *Sense8* and leads an organization whose primary mission it is to eliminate all sensates. Provenance: The Wachowskis.

300/500

92. Our Father Who Art in Hell Screen-Used Prop Poster from *Sense8*. Prop poster as seen in numerous episodes of *Sense8* depicting a bloodied Lito Rodriguez (Miguel Angel Silvestre) with knife in hand sitting beside the corpse of his victim. Framed 42 ½ x 29 ½". Exhibits expected production wear from use. Lito Rodriguez begins the show as a popular but closeted actor in Mexico City who over the course of the series comes to terms with his sexuality and eventually comes out to the world. Provenance: The Wachowskis.

100/200

93. Original Screen-Used Painting As Seen in Nomi Marks's Apartment from *Sense8*. Colorful original screen-used abstract painting as seen in Nomi (Jamie Clayton) and Neets's (Freema Agyeman) apartment throughout season 2 of *Sense8*. 53 x 83". Inscriptions to painting verso. Third party transportation required. Provenance: The Wachowskis.

600/800

94. Professor Kolovi Costume Fabric Sample from *Sense8*. Piece of sample fabric under acrylic sheet used in costume design for the character of Dr. Kolovi (John Judd). 16 x 12". Professor Kolovi is an instructor at the University of Chicago and a former associate of Mr. Whispers. Provenance: The Wachowskis.

60/90

95. Prop Sleeping Pills from *Sense8*. A group of 7 screen-used boxes of prop sleeping pills as seen throughout the Netflix series *Sense8*. Exhibits expected production wear from use. Provenance: The Wachowskis.

80/150

96. Will Gorski Screen-Used Drug Kit from *Sense8*. A pair of hypodermic needles, a pair of bent, rusty and burnt spoons, a rubber band, a Q-tip, a strip of aluminum foil and two plastic bags with prop heroin residue housed in a metal box with floral decorations on the lid. Includes original plastic production box with label on lid. 6 x 3 ¾ x 1 ¾". Exhibits expected production wear from use. Will Gorski (Brian J. Smith) is a Chicago police officer and sensate who helps to organize other sensates from around the world to form a united front against the BPO. Provenance: The Wachowskis.

200/300

97. A Group of 16 Screen-Used Miniature Vehicles from the Series Finale of *Sense8*. Screen-used miniature die-cast vehicles as seen in the series finale of *Sense8* during the scene in which the sensates plan their rescue of Wolfgang from the clutches of the BPO. Exhibits expected production wear from use. Provenance: The Wachowskis.

200/300





98



102

98. **A Group of Screen-Used Props from Sense8.** A group of 7 screen-used props including a pair of plastic bobbleheads depicting French action star Jean-Claude Van Damme in black and white karate outfits as seen in the season 2 episode "Who Am I?", a box of matches, a tin pail with "Catch of the Day" printed on one side, a pair of Alliance Trucks and Storage keychains, and a Chicago Police Department name tag for "Miller." Tallest height 7 ½". Exhibits expected production wear from use. Provenance: The Wachowskis.

150/250



99

99. **A Group of 13 Screen-Used Posters from Sense8.** Original screen-used posters, the majority of them LGBTQIA and music-themed, as seen on the walls of various characters' bedrooms throughout the series. Largest 17 x 13". Exhibits expected production wear from use. Provenance: The Wachowskis.

80/150



100

100. **A Large Group of Screen-Used Paper Ephemera from Sense8.** Includes a large group of programs for the 13th annual Fresh Meat Festival which was heavily featured in the first episode of Sense8, a pair of campaign flyers for Capheus "Van Damn" Onyango, police department decals, a group of 4 newspaper clippings about Angelica Turing, an unused set of Zolkoff vodka labels, a group of awards issued to Officer Michael Gorski, the arrest warrant issued for Nomi Marks in season 2, episode 8, 4 issues of *Psychic Phenomenon*, two groups of testing cards as used by Mr. Whispers and associates, and a group of screen-used photographs depicting Terrance Mann as Mr. Whispers, Joe Pantoliano as Michael Gorski, and Maxwell Jenkins and Brian J. Smith as Will Gorski. Exhibits expected production wear from use. Provenance: The Wachowskis.

200/300



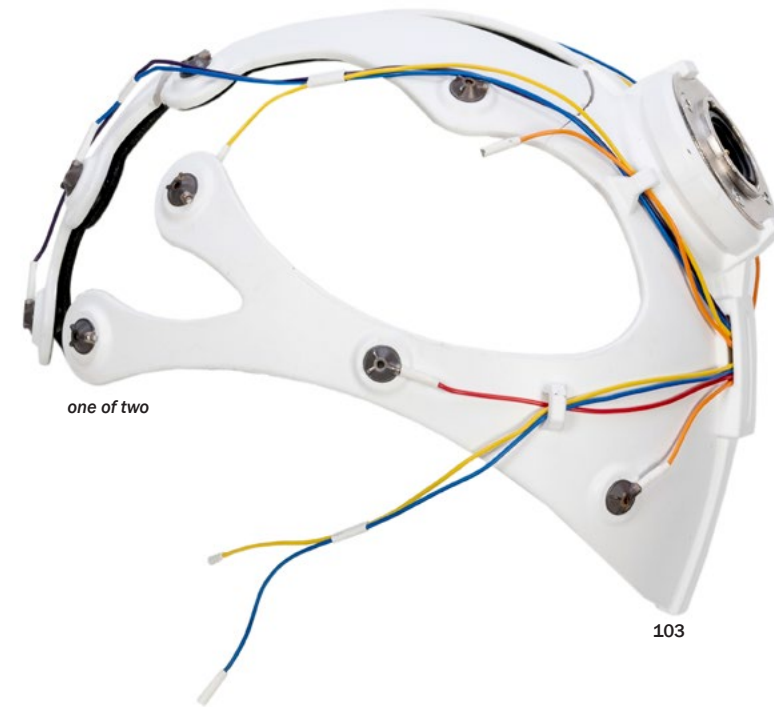
101

101. **A Large Group of Screen-Used Paper Ephemera Screen-Used in Sense8 Series Finale Paris Sequence.** Includes wanted posters for Angelica and Jonas, GPS tracker data, Biologic Preservation Organization identification card for Mr. Whispers with photo, surveillance photographs, handwritten notecards, hand drawings, documents, and other items seen taped to a glass pane in Kala's apartment in the Sense8 series finale. Includes a set reference photograph. Tape residue; exhibits expected production wear from use. Provenance: The Wachowskis.

200/300

102. **A Pair of Screen-Used Prop Cameras from Sense8.** Screen-used "Cupax" cameras with straps, one constructed of foam, as seen in the Naples tourist bus sequences of the Sense8 series finale. Each 4 ½" in length. Exhibits expected production wear from use. Provenance: The Wachowskis.

150/250



one of two

103



104



105

103. **A Pair of Screen-Used Helmet Props Worn by Mr. Whispers and Will Gorski in Sense8.** Kingston upon Thames, UK: Frozen Fish Design, 2015. Original screen-used resin and metal helmet props with metal cables as worn by Terrance Mann as "Mr. Whispers" and Brian J. Smith as "Will Gorski" in season 2 of Sense8. Production photograph of Gorski helmet in box included. In original production plastic boxes 15 x 10 x 11". Repaired crack, lacking one piece of foam on helmet interior of Mr. Whispers helmet; partially broken piece to Will Gorski helmet. Exhibits expected production wear from use. Provenance: The Wachowskis.

800/1,200

104. **A Pair of Screen-Used Pill Boxes from Sense8.** Original screen-used pill boxes as seen being used by Yrsa and Mrs. Stromness, respectively, each containing gelatin blocker capsules. Each measures approximately 2". Exhibits production wear from use. Provenance: The Wachowskis.

80/150

105. **A Group of 5 Prop Guns and 1 BPO Taser from Sense8.** Original screen-used rubber prop guns, including a Turing revolver with prop wires, and BPO taser as wielded by numerous characters throughout two seasons of Sense8. Exhibits expected production wear from use. Provenance: The Wachowskis.

300/500

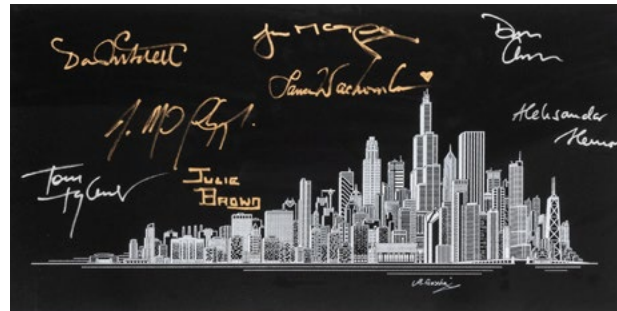




106



109



107



108

106. Framed Letter from the Sense8 August 8th Cluster Cast Members of Season 2 to Lana Wachowski. Framed cast letter reads, "Our love letter / to you Lana / Thank you for this / incredible journey / with all our love / and gratitude / the 8's" with signatures and lipstick kisses beside each of the cast members' signatures. Framed, 14 x 17 1/2". SIGNED BY STARS Jamie Clayton, Tina Desai, Bae Doona, Tuppence Middleton, Toby Onwumere, Max Riemelt, Miguel Angel Silvestre, and Brian J. Smith. Provenance: The Wachowskis.

400/600

107. Chicago Skyline Print Signed By the Creators of Sense8. Serigraph print of the Chicago skyline with printed signature of artist Gascha. Black frame, matted, with glass glazing, 15 x 24 3/4". SIGNED BY SERIES CREATORS AND PRODUCTION HEADS Lana Wachowski, J. Michael Stracynski, Dan Glass, David Mitchell, Alexander Hemon, James McTeigue, and Tom Twyker in silver and gilt marker. Provenance: The Wachowskis.

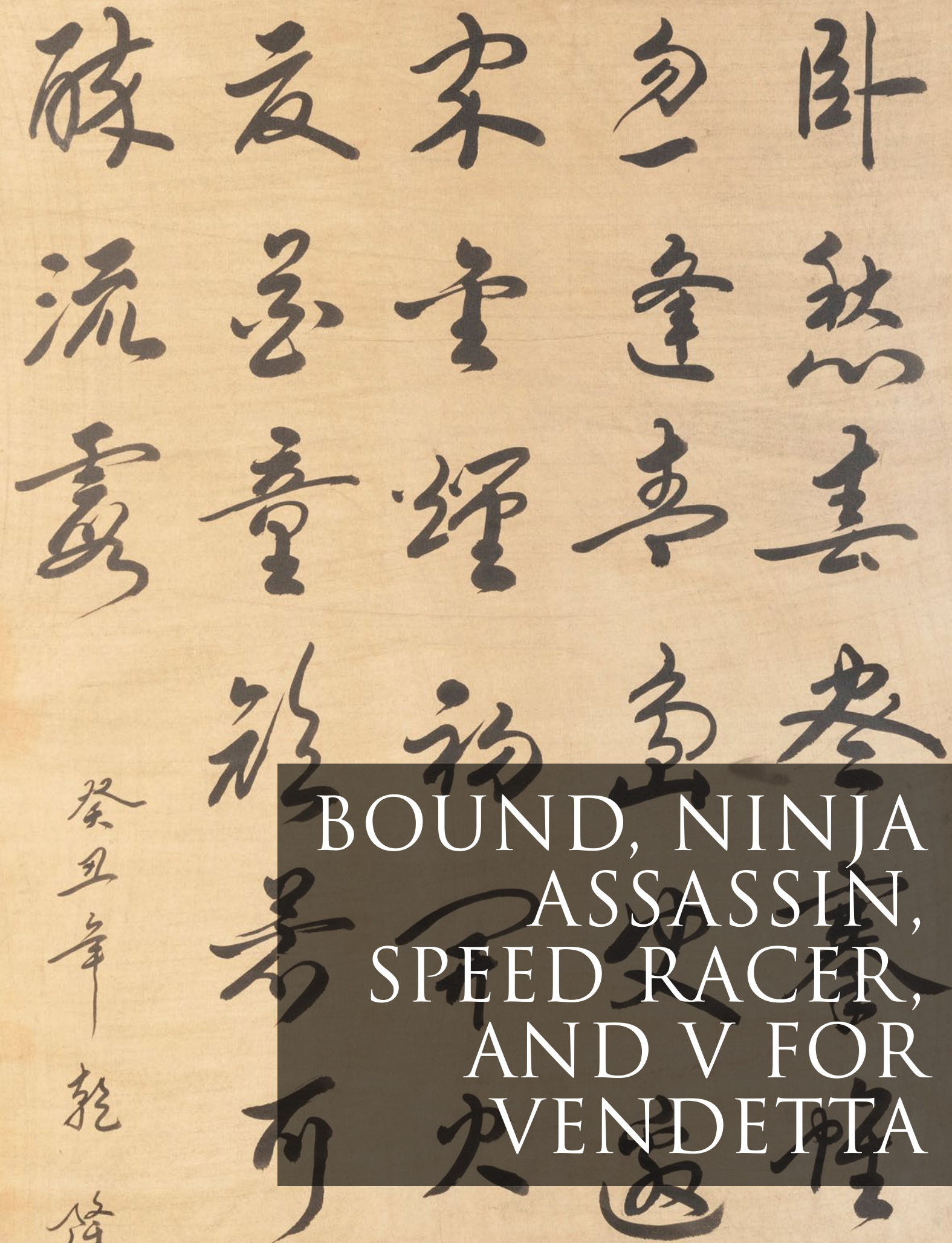
150/250

108. Sense8 Production-Used Clapperboard. Original acrylic clapperboard with printed label used in the filming of the Wachowskis' hit Netflix series Sense8 dated January 19, 2015, two days before shooting wrapped on the first season. 9 1/2 x 11". Velcro-backed with expected production wear. Provenance: The Wachowskis. Clapperboard notes cinematography work by John Toll, whose film credits also include Braveheart, Almost Famous, Tropic Thunder, Iron Man 3, and The Matrix Resurrections. Provenance: The Wachowskis.

300/500

109. A Trio of Bus Shelter Advertisements from Sense8. Original posters for use in bus shelters advertising the first season of Sense8. 48 x 73". Provenance: The Wachowskis.

80/150







110



113

three of four



111



112

110. Oversized Pull Chain Screen-Used Prop from *Bound*. Styrofoam and metal screen-used prop from the opening scene of *Bound*. Length 88". Exhibits expected production wear from use. This prop appeared in the opening scene of *Bound* in Violet (Jennifer Tilly) and Caesar's (Joe Pantoliano) apartment. Provenance: The Wachowskis.

300/500

111. Full Ninja Costume Screen-Worn by Stunt Performer Kim Do Nguyen in *Ninja Assassin*. Original costume including robe, sash, cloth gauntlets, mask, and boots as worn by stunt performer Kim Do Nguyen during action sequences in *Ninja Assassin*. Full height approximately 72". Exhibits expected production wear from use. Kim Do Nguyen is one of the most in-demand stunt performers working today, having appeared in *The Falcon and the Winter Soldier*, *Alita: Battle Angel*, *The Avengers*, and *Tron: Legacy*. Provenance: The Wachowskis.

300/500

112. Full Ninja Costume Screen-Worn by Stunt Performer and Fight Coordinator Jon Valera in *Ninja Assassin*. Original costume including robe, sash, cloth gauntlets, mask, and boots as worn by stunt performer Kim Do Nguyen during action sequences in *Ninja Assassin*. Full height approximately 66". Exhibits expected production wear from use. Jon Valera is one of the most accomplished martial artists working in Hollywood, having won numerous world championships and worked as a choreographer and stunt coordinator in *Deadpool*, *Atomic Blonde*, *Black Panther*, and *John Wick*. Provenance: The Wachowskis.

300/500

113. A Group of 4 Screen-Used Scrolls from *Ninja Assassin*. Original screen-used ninja scrolls as seen throughout various scenes in *Ninja Assassin*. Largest 26 1/2 x 64". Exhibits expected production wear from use. Provenance: The Wachowskis.

200/300



115



114

114. Purple Segway Personal Transporter from *Speed Racer*. Modified purple Segway personal transporter as used in the 2008 film *Speed Racer*. Height 51". Expected wear from production use. Not tested. Provenance: The Wachowskis. Third party transportation required.

3,000/5,000

115. A Large Group of Tie-In Toys and Other Promotional Items from *Speed Racer*. Approximately 85 promotional items including Hot Wheels and Mattel car toys, helmets, movie tie-in sports items, hats, books, clothing, and two sealed copies of *The Art of Speed Racer* with a foreword by Joel Silver. Overall condition good. Provenance: The Wachowskis.

300/500



116

116. The Coalition of the Willing to Power Screen-Used Prop Flag from *V for Vendetta*. Original screen-used fabric prop flag comprising elements of the British, American, and Nazi flags as seen in *V for Vendetta* when Gordon Dietrich (Stephen Fry) invites Evey Hammond (Natalie Portman) into his secret room of subversive materials. Framed 61 x 48". Barcode identifying prop as property of Ravenswood Kinowerks, Inc. on verso. Provenance: The Wachowskis. Third party transportation required.

800/1,200

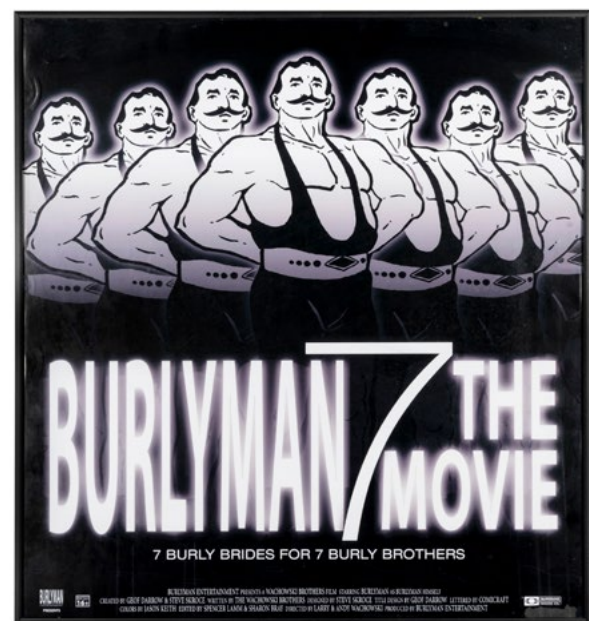




117

117. Screen-Used Crowd Mask and Package Display from *V for Vendetta*. Original iconic screen-used plastic mask as sent by the heroic V (Hugo Weaving) to the citizens of London in preparation for his final destruction of the Houses of Parliament attractively framed in a shadow box with prop British Freight Company box, ticket to the world premiere of *V for Vendetta* and an invitation to the after party. Framed 35 ½ x 7 ¾". Prop and box exhibit expected production wear. Provenance: The Wachowskis. Third party transportation required.

1,200/2,000



118

118. *Burlyman 7: The Movie* Screen-Used Prop Poster from *V for Vendetta*. [N.d., ca. 2005]. Poster for the fictional film *Burlyman 7* with the tagline "7 Burly Brides for 7 Burly Brothers," with credits in the margin for the Wachowskis, Geof Darrow, Steve Skroce, Burlyman Entertainment, and others. Framed 21 ¾ x 20 ½". Posters for *Burlyman 7* appear in the background in several scenes in *V for Vendetta*, posted in subway stations and on the street. Provenance: The Wachowskis.

200/300

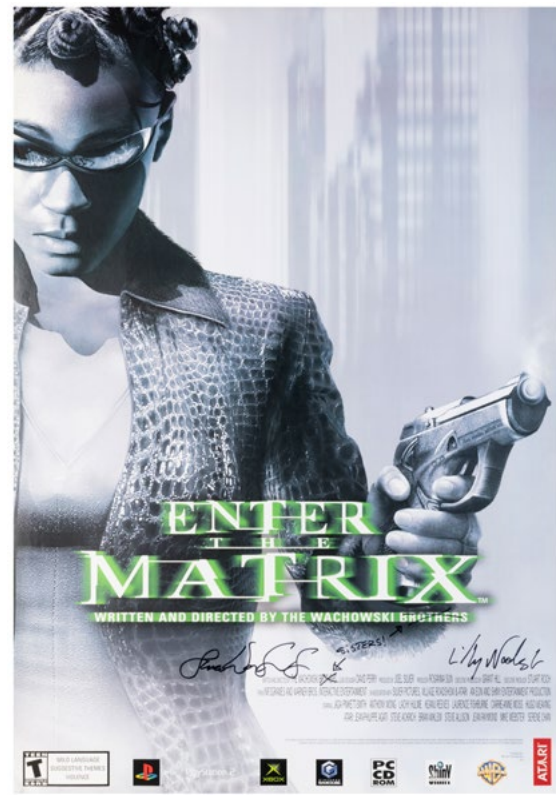


POSTERS





119



120

one of five



121



122



123

119. A Group of 50 Bus Shelter Posters from Jupiter Ascending. Original large-scale posters depicting Caine Wise (Channing Tatum) and Jupiter Jones (Mila Kunis). 48 x 70". Overall condition good. Provenance: The Wachowskis.

250/350

120. A Group of 5 Signed Enter the Matrix Posters. One sheet posters for the 2003 video game Enter the Matrix depicting Jada Pinkett Smith as Niobe with smoking gun in hand. 40 x 27". EACH POSTER SIGNED BY LANA AND LILLY WACHOWSKI. Overall condition good. Provenance: The Wachowskis. A.

200/300

121. The Matrix Academy Awards Congratulations Poster. 2000. Poster depicting four Oscar statuettes, with typography and design after the film's theatrical poster, commemorating the film's four Oscar wins at the 72nd Academy Awards for Best Film Editing, Best Sound, Best Sound Effects Editing, and Best Visual Effects. Framed, 40 1/8 x 27 1/4". The Matrix was one of four films to win multiple Oscars, second only to Best Picture winner American Beauty in total number of awards won. Provenance: The Wachowskis (Kinowerks, Inc. label retained to frame verso).

200/400

122. The Matrix Reloaded Advance Holofoil One-Sheet Poster Lot (116). Warner Bros., 2003. Lot of 116 original copies of the single-sided advance poster beautifully printed holofoil in black, green, and silver. 27 x 40". Some exhibit wear to edges and corners, but generally fine. Provenance: The Wachowskis.

250/750

123. The Matrix Reloaded One-Sheet Poster Collection (150+). Warner Bros., 2003. A group of approximately 139 one-sheet posters total, in six different designs, including Neo, Twins, Niobe, Trinity, Persephone, Agent Smith, Morpheus, and Enter the Matrix. 27 x 40". Generally single-sided, some double-sided included. Provenance: The Wachowskis.

200/600



one of five

124

124. A Group of 5 The Matrix Reloaded Teaser Posters Signed by the Wachowskis. One-sheet holofoil posters with iconic downward-scrolling numerical code against a black background advertising a May 15, 2003 release date for the Wachowskis' highly-anticipated sequel to their groundbreaking 1999 film. 40 x 27". EACH POSTER SIGNED BY LANA AND LILLY WACHOWSKI. Overall condition good. Provenance: The Wachowskis. A.

300/500





125

seven of thirty three



127



three of fifteen



128



126

one of five

125. A Group of 33 The Matrix Reloaded Character Posters Signed by the Wachowskis. A variety of 7 different one-sheet posters advertising the Wachowskis' highly-anticipated sequel to their groundbreaking 1999 film depicting Neo (Keanu Reeves), Trinity (Carrie-Anne Moss), Morpheus (Laurence Fishburne), Agent Smith (Hugo Weaving), the Twins (Neil and Adrian Rayment), Niobe (Jada Pinkett Smith), and Persephone (Monica Belluci). 40 x 27". EACH POSTER SIGNED BY LANA AND LILLY WACHOWSKI. Overall condition good. Provenance: The Wachowskis. A.

800/1,200

126. A Group of 5 The Matrix Revolutions Teaser Posters Signed by the Wachowskis. One-sheet holofoil posters with iconic downward-scrolling numerical code against a black background advertising a November 5, 2003 release date for the Wachowskis' epic finale to their groundbreaking *Matrix* trilogy. 40 x 27". EACH POSTER SIGNED BY LANA AND LILLY WACHOWSKI. Overall condition good. Provenance: The Wachowskis. A.

300/500

127. The Matrix Revolutions Posters One-Sheet Poster Lot (80+). Warner Bros., 2003. Including (18) copies of the one-sheet single-sided advance holofoil poster; and (64) copies of the double-sided advance one-sheet in a few styles with duplication. All rolled. 27 x 40". Several copies worn at corners, but majority very good/fine. Provenance: The Wachowskis.

150/300

128. A Group of 15 The Matrix Revolutions Posters Signed by the Wachowskis. A variety of one sheet posters advertising the Wachowskis' epic conclusion to their groundbreaking *Matrix* trilogy with images of Morpheus (Laurence Fishburne) and Trinity (Carrie-Anne Moss), Agent Smith (Hugo Weaving), and the Armored Personnel Unit (APU). 40 x 27". EACH POSTER SIGNED BY LANA AND LILLY WACHOWSKI. Overall condition good. Provenance: The Wachowskis.

400/600

129. A Group of 28 Speed Racer Posters Signed by the Wachowskis. A variety of 6 different one sheet posters advertising the Wachowskis' 2008 film *Speed Racer* with character posters depicting Mr. Musha (Hiroyuki Sanada), Taejo Togokahn (Rain), Trixie (Christina Ricci), Racer X (Matthew Fox), and Speed (Emile Hirsch). 40 x 27". EACH POSTER SIGNED BY LANA AND LILLY WACHOWSKI. Overall condition good. Provenance: The Wachowskis. A.

400/600



four of twenty eight

129





131



132



130

one of eight

130. A Group of 8 Lenticular Speed Racer Posters. A group of lenticular advertising posters on plastic backing from Speed Racer. 40 x 27". Overall condition good. Provenance: The Wachowskis. Third party shipping required.

200/300

131. A Large Group of Speed Racer Posters. A group of approximately 150 one-sheet posters with a variety of 5 different posters advertising the Wachowskis' 2008 film Speed Racer with character posters depicting Mr. Musha (Hiroyuki Sanada), Taejo Togokahn (Rain), Trixie (Christina Ricci), Racer X (Matthew Fox), and Speed (Emile Hirsch). 40 x 27". Overall condition good. Provenance: The Wachowskis. Third party shipping required.

200/400

132. A Group of 3 Vinyl Speed Racer Character Posters. Large scale vinyl posters depicting Trixie (Christina Ricci), Racer X (Matthew Fox), and Speed (Emile Hirsch). 96 x 60". Overall condition good. Sunning to some. Provenance: The Wachowskis. Third party shipping required.

150/250



133



134



135



136

133. V for Vendetta One-Sheet Advance Movie Poster Lot (90+). Warner Bros., 2005. Over 90 copies of the V-style advance one-sheet poster, rolled, including 50 copies in original shipping box with mailing label addressed to director James McTeigue, and a second roll of approximately 46 copies. 27 x 40". Overall condition good. Provenance: The Wachowskis.

300/750

134. V for Vendetta One-Sheet Advance Movie Poster Lot (150+). Warner Bros., 2005. Including (134) copies of the single-sided advance one-sheet poster; and (41) copies of the double-sided advance, rolled, of which 50 copies of the single-sided are stored in an original shipping box with mailing label addressed to director James McTeigue. 27 x 40". Overall condition good. Provenance: The Wachowskis.

300/900

135. V for Vendetta One-Sheet Advance Movie Poster Lot (90+). Warner Bros., 2005. Approximately 100 copies of the single-sided advance one-sheet poster "criss cross" or "double sword" design poster, rolled, of which 50 copies are stored in the original shipping box with mailing label addressed to director James McTeigue. 27 x 40". A handful of copies created or dinged at edges, but fine overall. Provenance: The Wachowskis.

200/800

136. V for Vendetta One-Sheet Advance Movie Poster Lot (100+). Warner Bros., 2005. Approximately 112 copies of the single-sided advance poster (27 x 40"), rolled. A portion of the copies with closed tears at edges and scattered other wear, but generally very good. Provenance: The Wachowskis.

250/1,000





137

four of twenty



141



138

139



142



140

137. A Group of 20 V for Vendetta Posters Signed by the Wachowskis. A variety of 5 different posters advertising the Wachowski-produced 2006 film V for Vendetta depicting the characters V (Hugo Weaving) and Evey Hammond (Natalie Portman) against numerous backdrops. 40 x 27". EACH POSTER SIGNED BY LANA AND LILLY WACHOWSKI. Overall condition good. Provenance: The Wachowskis. A. 300/500

138. Two 1980s-90s Horror/Fantasy Movie Posters. One-sheet posters for the films Evil Dead 2: Dead by Dawn (Rosebud, 1987) and Army of Darkness (Universal, 1992). Framed 27 x 40". Glass cracked on Evil Dead 2 poster at top and lower right. Provenance: The Wachowskis. 100/200

139. Faster Pussycat, Kill! Kill! Eve Productions, R-ca. 2000. One-sheet re-release poster for the 1965 cult classic exploitation film directed by Russ Meyer. Framed 41 ¼ x 29 ¼". Provenance: The Wachowskis. 150/250

140. A Pair of German Movie Posters. German A1 format posters including re-release poster for Fritz Lang's classic noir M (R-1960s) and Billy Wilder's One, Two, Three (1961). Framed 35 ½ x 25 ¾". Overall condition good. Provenance: The Wachowskis. 125/225

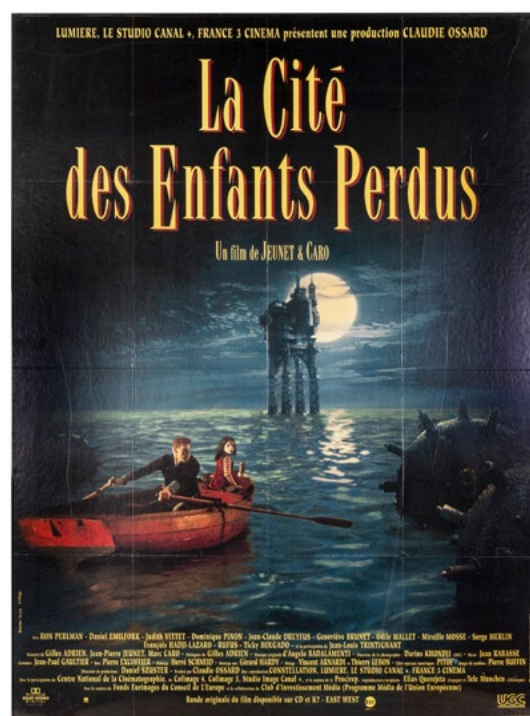
141. A Trio of German Movie Posters. Including: Engel (1973), re-release of Angel, starring Marlene Dietrich, by Ernst Lubitsch; Kagemusha: Der Schatten des Kriegers (1980); and Das Rote Phantom Schlägt zu [Superargo vs. Diabolikus] (1970s). Framed 34 ½ x 25". Provenance: The Wachowskis. 125/225

142. A Trio of Japanese Martial Arts and Crime Movie Posters. Including: Lone Wolf and Cub: Baby Cart to Hades (1972); A Yakuza Has His Way (1972); and Eighteen Year Jail Term (1967). Each framed, the last matted. Largest 34 ½ x 26 ¼". Each frame displays barcode on verso identifying them as property of Ravenswood Kinowerks, Inc. Provenance: The Wachowskis. 150/250





144



143



145

143. *The City of Lost Children*. Lumiere/Studio Canal/France 3 Cinema, 1995. French 1-panel movie poster for the science fantasy film by Marc Caro and Jean-Pierre Jeunet. Framed 61 3/4 x 45 1/2". Provenance: The Wachowskis. Third party transportation required.

80/150

144. *A Chinese Ghost Story*. Film Workshop, 1987. Poster for the showings in London at the National Film Theatre, sponsored by the BFI, for the Hong Kong romantic comedy horror film by Ching Tiu-sung. Framed 39 3/4 x 59 3/4". Provenance: The Wachowskis. Third party transportation required.


80/150

145. *Rebirth of Mothra*. Toho/TriStar, 1996. Japanese B1 movie poster for the classic *kaiju* film. Framed 31 x 23". This was the last *kaiju* film supervised by Tomoyuki Tanaka, creator and producer of the original *Mothra*, *Godzilla*, and numerous others. Provenance: The Wachowskis.

50/150



PRESENTED TO  
**LARRY WACHOWSKI**  
 TO COMMEMORATE WORLDWIDE SALE  
 OF MORE THAN  
 1,000,000 COPIES OF THE  
**MAVERICK RECORDS**  
 COMPACT DISC AND CASSETTE  
**"THE MATRIX"**  
 MUSIC FROM THE MOTION PICTURE







146



148



149



150



151



152



147

146. A.C. Nielsen Gold Reel Award Presented to Lana Wachowski for *The Matrix*. 1999. Clear acrylic Gold Reel Award presented to Lilly Wachowski in recognition of *The Matrix* surpassing \$100 million at the box office within a month of its release. Height 19 ½". Provenance: The Wachowskis.

800/1,200

147. A.C. Nielsen Gold Reel Award Presented to Lilly Wachowski for *The Matrix*. 1999. Clear acrylic Gold Reel Award presented to Lilly Wachowski in recognition of *The Matrix* surpassing \$100 million at the box office within a month of its release. Height 19 ½". Provenance: The Wachowskis.

800/1,200

148. American Cinema Editors Award for Best Edited Feature Film (Dramatic) Awarded to Zach Staenberg for *The Matrix*. 1999. Figural statuette of a muscular man holding the A.C.E. logo high above his head mounted on wooden base. Height 21". Plaque affixed to base reads, "American Cinema Editors / Best Edited / Feature Film (Dramatic) / *The Matrix* / Zach Staenberg, A.C.E. / 1999 / (Duplicate)." Zach Staenberg won an Academy Award for Best Editing for his work on *The Matrix* this same year. Provenance: The Wachowskis.

1,000/2,000

149. Cineprix Swisscom Award for *The Matrix*. 1999. Metal award depicting three stylized hands holding a film reel above a mass of twisting film awarded to The Wachowskis in the category of Best Film - Action & Suspense for *The Matrix*. Height 12 ½". The Cineprix Swisscom Awards are an annual Swiss cinema award decided by Swiss audiences. Provenance: The Wachowskis.

100/200

150. Deauville American Film Festival Prix du Jury Spéciale Deauville Silver Bowl Presented to the Wachowskis with Accompanying Certificate for *Bound*. 1996. Prix du Jury silver bowl award engraved with floral elements presented to the Wachowskis for *Bound* with accompanying certificate. Bowl height 11", diam. 15"; certificate framed 17 x 21". The Deauville American Film Festival has been staged in Deauville, France since 1975 and began to award prizes for feature and short films in 1995. *Bound* was tied with *Welcome to the Dollhouse* for the Prix du jury speciale Deauville prize at the 1996 Deauville American Film Festival. Barcode on frame verso identifying piece as property of Ravenswood Kinowerks, Inc. Provenance: The Wachowskis.

250/350

151. Empire Award for Best Film awarded to the Wachowskis for *The Matrix*. 2000. Clear acrylic award with spotlight graphics presented to the Wachowskis for *The Matrix*. Height 8 ½". The Empire Awards was an annual cinema awards ceremony held by British film magazine *Empire* which ran from 1996 to 2018. Provenance: The Wachowskis.

800/1,200

152. Gold Record Awarded to Lana Wachowski for *The Matrix Reloaded*. Recording Industry Association of America award presented to Lana Wachowski to commemorate 500,000 copies of the soundtrack for *The Matrix Reloaded* being sold. Framed 15 x 21 ½". Barcode on frame verso identifying piece as property of Ravenswood Kinowerks, Inc. Provenance: The Wachowskis.

250/350





153



156



157



158



154

153. Gold Record Awarded to Lilly Wachowski for *The Matrix Reloaded*. Recording Industry Association of America award presented to Lilly Wachowski to commemorate 500,000 copies of the soundtrack for *The Matrix Reloaded* being sold. Framed 15 x 21 1/2". Barcode on frame verso identifying piece as property of Ravenswood Kinowerks, Inc. Provenance: The Wachowskis.

250/350

154. Gold Record Awarded to the Wachowskis for *The Matrix Reloaded*. Recording Industry Association of America award presented to the Wachowskis to commemorate 500,000 copies of the soundtrack for *The Matrix Reloaded* being sold. Framed 21 x 17". Barcode on frame verso identifying piece as property of Ravenswood Kinowerks, Inc. Provenance: The Wachowskis.

250/350

155. A Trio of IGN Awards Presented to the Wachowskis for *The Matrix*. 2000. Clear acrylic awards presented to the Wachowskis for *The Matrix*. Height 7 1/2". Provenance: The Wachowskis.

600/800

156. International Gallery of Superb Printing Award Presented to the Wachowskis for *The Matrix*. 2003. Silver-stamped certificate under acrylic and mounted on wood recognizing the Wachowskis for "Superb Craftsmanship in the Production of 'Matrix Print'." 13 1/2 x 11 1/2". Barcode on verso identifying piece as property of Ravenswood Kinowerks, Inc. Provenance: The Wachowskis.

100/200



155

157. Japanese Academy Film Prize Award Presented to the Wachowskis for *The Matrix*. 2000. Gilt statuette in bamboo box awarded to The Wachowskis at the 23rd Annual Japan Academy Film Prize Awards for *The Matrix* accompanied by a framed certificate. Height 2 3/4". Along with *The Sixth Sense*, *Life is Beautiful*, *Elizabeth*, and *Shakespeare in Love*, *The Matrix* was nominated for Outstanding Foreign Language Film, with the winner ultimately being *The Sixth Sense*. At the Japan Academy Film Prize Awards all nominees receive a trophy, with the ultimate winner receiving one measuring approximately 10" tall. Provenance: The Wachowskis.

400/600

158. Jupiter Award for Best Director Awarded to Lana Wachowski for *The Matrix*. 2000. Gilt figural statuette of a muscular man with arms outstretched and wings unfurled. Height 13 3/4". The Jupiter Awards are an annual German cinema award held by *Cinema* and *TV Spielfilm* magazines, with its first awards held in 1979. Other Best Director winners include Steven Spielberg, James Cameron, Ridley Scott, Peter Jackson, and Quentin Tarantino. Provenance: The Wachowskis.

800/1,000

159. Jupiter Award for Best Director presented to Lilly Wachowski for *The Matrix*. 2000. Gilt figural statuette of a muscular man with arms outstretched and wings unfurled. Height 13 3/4". The Jupiter Awards are an annual German cinema award held by *Cinema* and *TV Spielfilm* magazines, with its first awards held in 1979. Other Best Director winners include Steven Spielberg, James Cameron, Ridley Scott, Peter Jackson, and Quentin Tarantino. Provenance: The Wachowskis.

800/1,000



159





160



161



162



163



164



165



166



167

160. MTV Movie Award for Best Director Presented to Lana Wachowski for *The Matrix*. 2000. Statuette with gilt popcorn and emblazoned with the MTV Movie Awards 2000 logo presented to Lana Wachowski for *The Matrix*. Height 11". Provenance: The Wachowskis.

800/1,000

161. MTV Movie Award for Best Director Presented to Lilly Wachowski for *The Matrix*. 2000. Statuette with gilt popcorn and emblazoned with the MTV Movie Awards 2000 logo presented to Lilly Wachowski for *The Matrix*. Height 11". Provenance: The Wachowskis.

800/1,000

162. Platinum Record Awarded to Lana Wachowski for *The Matrix*. 2000. Platinum record with compact disc overlaid above iconic downward-scrolling numerical code against a black background as made famous in *The Matrix* awarded to Lana Wachowski to commemorate 1,000,000 copies of the film's soundtrack sold. Framed 22 x 17 1/2". Barcode on frame verso identifying piece as property of Ravenswood Kinowerks, Inc. Provenance: The Wachowskis.

300/500

163. Platinum Record Awarded to Lilly Wachowski for *The Matrix*. 2000. Platinum record with compact disc overlaid above iconic downward-scrolling numerical code against a black background as made famous in *The Matrix* awarded to Lilly Wachowski to commemorate 1,000,000 copies of the film's soundtrack sold. Framed 22 x 17 1/2". Barcode on frame verso identifying piece as property of Ravenswood Kinowerks, Inc. Provenance: The Wachowskis.

300/500

164. Saturn Award for Best Director Presented to the Wachowskis for *The Matrix*. 2000. Gilt statuette award of a flying saucer presented to the Wachowskis for their work on *The Matrix*. Height 9 1/2". Provenance: The Wachowskis.

800/1,200

165. Saturn Award for Best Director Presented to the Wachowskis for *The Matrix*. 2000. Gilt statuette award of a flying saucer presented to the Wachowskis for their work on *The Matrix*. Height 9 1/2". Provenance: The Wachowskis.

800/1,200

166. A Pair of Box Office Certificates Awarded to the Wachowskis for *The Matrix* and *The Matrix Reloaded*. 1999/2003. Pictorial certificates celebrating the box office grosses of the first two *Matrix* films in their first 5 days and first 20 days, respectively. Largest 17 x 24". Barcodes on versos of each frame identifying the pieces as property of Ravenswood Kinowerks, Inc. Provenance: The Wachowskis.

150/250

167. A Group of 5 Hollywood.com Trailer Awards Presented to the Wachowskis for *The Matrix*. 2000. Includes awards for Best Overall, Best Use of Music, Best Action, and Best Teaser for *The Matrix*. Presented on February 2, 2000. Height 4 3/4". Provenance: The Wachowskis.

300/500





168

three of six



169

168. A Group of 6 Awards Presented to the Wachowskis for Various Films. 1996-2000. Includes 3 DVD Festival Awards for *The Matrix*, the Foster's Film Can Award for *The Matrix*, the Les Trophees Fun Radio du Cinema Award for *Bound*, and the Hollywood Reporter Key Art Best of Show Audio/Visual Award for *The Matrix*. Tallest height 10 1/2". Provenance: The Wachowskis.

400/600

169. A Group of 3 Awards Presented to the Wachowskis for Various Films. 1996-2007. Includes Outfest '96 Grand Jury Honorable Mention Award for *Bound*, Cinema Audio Society Award for Outstanding Sound Mixing awarded to John Reitz, David Campbell, Gregg Rudloff and David Lee for *The Matrix*, and the Rotten Tomatoes Certified Fresh Award for *V for Vendetta*. Largest 8 1/2 x 5 1/2 x 2 1/2". Scratching to silver plate on Cinema Audio Society Award. Overall condition good. Provenance: The Wachowskis.

150/250

# PERSONAL MEMORABILIA





170



173



174



175



171

170. **Chicago Bears Football Helmet Gifted to the Wachowskis by Willie Gault.** 1999. Navy blue Chicago Bears football helmet. 9 1/2 x 9 x 12". INSCRIBED BY CHICAGO BEARS WIDE RECEIVER WILLIE GAULT. Willie Gault was drafted in the first round by the Chicago Bears during the 1983 NFL Draft. During the Bears' 1985 season he caught 33 passes and is credited with recruiting teammates to participate in the iconic "Super Bowl Shuffle" song and music video. The Bears went on to defeat the New England Patriots 46-10 in Super Bowl XX. Profits from the song were donated to the Chicago Community Trust to help needy families. Willie Gault was inducted into the Tennessee Sports Hall of Fame in 2017. Provenance: The Wachowskis.

400/600

171. **Chip n' Dale Figurine Gifted to the Wachowskis by Susan Sarandon.** Disney, ca. 1990s. Plaster figurine depicting the cartoon characters Chip and Dale fighting over a peanut. Length 12". INSCRIBED BY SUSAN SARANDON AT BASE, "Love, Susan." Some chips to edges. Provenance: The Wachowskis.

200/300

172. **Fan-Gifted Cartoon Art Depicting Various Hollywood and Entertainment Personalities.** A colorful assemblage of entertainment personalities gathered together in a style reminiscent of the iconic *Sgt. Pepper's Lonely Hearts Club Band* album cover gifted to the Wachowskis during a Japanese promotional tour. Framed 36 x 24 1/2". Provenance: The Wachowskis.

100/200

173. **Hawaiian Poi and Ring Pounders Gifted to the Wachowskis by Keanu Reeves.** Basalt poi and ring pounder implements as used in traditional Hawaiian culture. Considered to be the most valuable of stone implements used on the Hawaiian islands, these pounders were used to crush the taro root after baking and then kneaded into a fine paste called *poi*, with its nourishment considered a perfect substitute for lactose-sensitive babies. Tallest height 10". Gifted by Keanu Reeves to the Wachowskis during production of the first three *Matrix* films. Provenance: The Wachowskis.

600/800



172



177

174. **A Pair of Oversized Clapperboard Clappers Gifted to the Wachowskis by Crew Members of Speed Racer.** Plywood painted gag clapperboard clappers constructed by the crew of *Speed Racer*. Largest 59 x 8 x 1". Larger clapper INSCRIBED AT CORNER, "Made by Martin"; smaller INSCRIBED ON PLATE, "Go the big sticks / Matt, Brett, Helen." Provenance: The Wachowskis. Third party transportation required.

250/350

175. **Silver Clock Gifted to the Wachowskis by Joel Silver.** Circa 1990s. Electric alarm clock with blue face. Height 11". Working. Provenance: The Wachowskis.

100/200

176. **A Group of 4 Figurines from the Front Desk of the Ravenswood Kinowerks Office.** Four figurines constructed of a variety of materials including clay, plastic, and metal. Tallest 21". Overall condition good. Provenance: The Wachowskis.

150/250



176

177. **A Large Group of Media Materials Related to the Wachowskis.** Approximately 150 items including DVDs, Blu-Rays, CDs, laser discs, video games, and comics from *The Animatrix*, *Bound*, *Enter the Matrix*, *The Matrix*, *The Matrix Reloaded*, *The Matrix Revolutions*, *The Ultimate Matrix Collection*, *Ninja Assassin*, and *V for Vendetta*. Includes *The Matrix: Path of Neo* PC game and duplicate titles. Provenance: The Wachowskis.

300/500





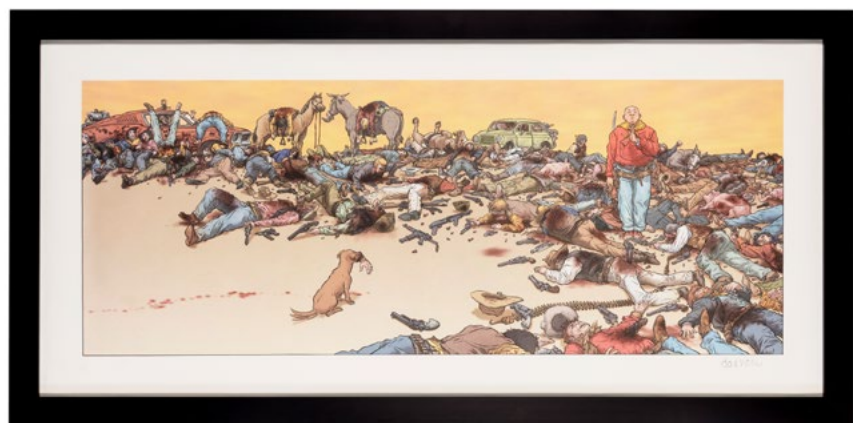
178



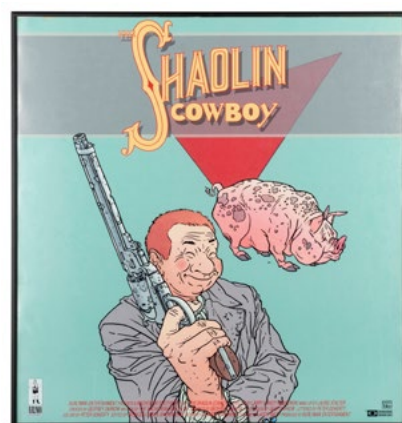
179



180



181



183



182

178. **A Large Group of Print Materials Related to the Wachowskis.** Approximately 150 items including multiple copies of the complete run of The Wachowskis' *Doc Frankenstein*, 250 duplicate lobby cards from *The Matrix*, 29 movie tie-in notepads from *The Matrix Reloaded*, a copy of *The Matrix* screenplay as published by Newmarket Press, a dual English-Japanese translation of *The Matrix* screenplay, 2 softcover English-Japanese translations of *The Art of the Matrix*, a sealed hardbound copy of *The Art of the Matrix*, and a Japanese-issued collector's box of *The Matrix* with region-specific DVD, a copy of the original screenplay as published by Newmarket Press, and a film frame from *The Matrix* depicting Neo and Agent Smith flying at one another with guns drawn.

300/500

179. **A Pair of Framed Sheet Music Covers.** 1895/1900. Two framed sheet music covers for the late 19th and early 20th century ditties "The Jolly Boys' Brigade" as sung by Miss Lily Clifton and "Just In A Motherly Way" as sung by Harry Randall. Matted and framed 19 x 14". Foxing. Lacking glass in "The Jolly Boys' Brigade." Provenance: The Wachowskis.

60/90

180. **CHADWICK, Paul (b. 1957). Y The Last Man #17 Page Panel.** 2004. Inked Jose Marzan Jr. Original panel for page 11 of issue Y *The Last Man* #17 issued in February 2004. Matted and framed 21 1/2 x 15 3/4". Paul Chadwick is a comic and film storyboard artist who has worked on numerous projects for Disney, Lucasfilm, and Warner Bros. along with numerous issues of *The Matrix* comic book series. Provenance: The Wachowskis.

200/300

181. **DARROW, Geof. The Shaolin Cowboy Signed Print.** Burlyman Entertainment, [n.d.]. Horizontal color serigraph, SIGNED in graphite ("Darrow") to lower right. Black metal frame with glass glazing, 19 x 38 1/2". Provenance: The Wachowskis.

200/300

182. **DARROW, Geof. The Shaolin Cowboy Panoramic Comic Print.** Burlyman Entertainment, [n.d., ca. 2014]. Large panoramic illustration depicting the title character at the far left, surrounded by a large posse of people of every description. Black metal frame with glass glazing, 13 1/2 x 70 3/4". Provenance: The Wachowskis. Third party transportation required.

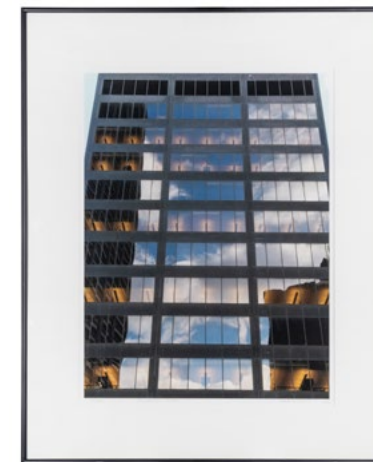
200/400

183. **DARROW, Geof. The Shaolin Cowboy Movie Poster.** Burlyman Entertainment, [n.d., ca. 2000s]. Color poster for a fictional or unrealized film adaption of the comic book series by Darrow and written by the Wachowskis. Black metal frame with glass glazing, 21 3/4 x 20 1/2". Provenance: The Wachowskis.

100/200

184. **DAVIS, Dane. A Pair of Framed Photographs.** 2004. Two full color framed photographs views of Manhattan as seen through windows. Framed and matted, 30 x 24". LIMITED EDITION, number 1 of 20 copies of each photograph, SIGNED AND TITLED BY PHOTOGRAPHER. Dane Davis is a sound editor whose film credits include all of the Wachowski films including *The Matrix*, for which he won an Academy Award. Includes card to Lana Wachowski from Dane Davis. Barcode on verso of each photograph identifying them as property of Ravenswood Kinoworks, Inc. Provenance: The Wachowskis.

150/250



184



185

185. **KETCHAM, William. A Trio of Framed Photographs.** Circa 1990s. Black and white photographs depicting a group of satellites in the desert, a group of mid-century roadside motel units shaped like teepees, and an image of the famous *Eternal Silence* sculpture by Lorado Taft as it stands in Chicago's Graceland Cemetery. Framed and matted, 14 1/2 x 24". SIGNED BY PHOTOGRAPHER ON VERSOS. Provenance: The Wachowskis.

150/250



## CONDITIONS OF SALE

The lots listed in this catalogue (whether printed or posted online) will be offered at public auction by Potter and Potter Auctions, Inc., as agent for consignor(s) subject to the following terms and conditions. By bidding at auction you agree to be bound by these Conditions of Sale.

### PRIOR TO THE SALE

**Please examine lots.** Prospective buyers are strongly advised to “in person” or by personally retained Agent, examine any property in which they are interested before the auction takes place. Condition reports may be provided if requested in a timely manner.

**Condition of lots, Warranties and Representations** - All lots are sold “AS IS” and without recourse, and neither Potter and Potter Auctions, Inc. nor its consignor(s) makes any warranties or representations, express or implied with respect to such lots. Neither Potter and Potter Auctions, Inc. nor its consignor(s) makes any express or implied warranty or representation of any kind or nature with respect to merchantability, fitness for purpose, correctness of the catalogue or other description of the physical condition, size, quality, rarity, importance, medium, material, genuineness, attribution, provenance, period, source, origin, completeness, historical significance of any lot sold. The absence of any reference to the condition of a lot does not imply that the lot is in perfect condition or completely free from wear and tear, imperfections or the effects of aging. No statement, whether written or oral, and whether made in the catalogue, or in supplements to the catalogue, an advertisement, a bill of sale, a posting or announcement, the remarks of an auctioneer, or otherwise, shall be deemed to create any warranty, representation or assumption of liability. Potter and Potter Auctions, Inc. and its consignor(s) make no warranty or representation, express or implied, that the purchaser will acquire any copyright or reproduction rights to any lot sold.

### AT THE SALE

**Registration Before Bidding** - A prospective buyer must complete and sign a registration form and provide identification before bidding. We may require bank or other financial references. Potter and Potter Auctions, Inc., is under no obligation to approve the registration of any prospective registrant.

**Bidding as Principal** - When making a bid, a bidder is accepting personal liability to pay the purchase price, including the buyer’s premium, all applicable taxes and all other applicable charges, unless it has been explicitly agreed upon in writing with Potter and Potter Auctions, Inc. before the commencement of the sale that the bidder is acting as agent on behalf of an identified third party acceptable to Potter and Potter Auctions, Inc., and that Potter and Potter Auctions, Inc. will only look to the principal for payment.

**Absentee Bids** - Potter and Potter Auctions, Inc. will use reasonable efforts to carry out written bids given to us prior to the sale for the convenience of clients who are not present at the auction in person. Bids must be placed in U.S. dollars. If we receive written bids on a particular lot for identical amounts, and these are the highest bids on the lot at the auction, it will be sold to the person whose written bid was received and accepted first. Execution of written bids is a free service undertaken subject to other commitments at the time of the sale and Potter and Potter Auctions, Inc. does not accept liability for failing to execute a written bid or for errors and omissions in connection with such written bid(s).

**Telephone Bids** - If a prospective buyer makes arrangements with us prior to the commencement of the sale we will use reasonable efforts to contact said prospective buyer to enable them to participate in the bidding by telephone and we do not accept liability for failure to do so or for errors and omissions in connection with telephone bidding.

Bidding Increments - **Expected bid increments are as follows:**

Min Value	Max Value	Increment
\$0.00	\$29.00	\$5.00
\$30.00	\$99.00	\$10.00
\$100.00	\$499.00	\$25.00
\$500.00	\$999.00	\$50.00
\$1000.00	\$1,999.00	\$100.00
\$2,000.00	\$4,999.00	\$200.00
\$5,000.00	\$9,999.00	\$500.00
\$10,000.00	\$19,999.00	\$1,000.00
\$20,000.00	\$49,999.00	\$2,000.00
\$50,000.00	and above	10% of current bid

**Note: the auctioneer may modify the increments at any time.**

**Reserves** - Although the majority of the lots in the sale are offered without reserve, some lots in the sale may be subject to a reserve which is the confidential minimum price below which such lot will not be sold. The reserve will not exceed the low estimate of the lot. Reserves are agreed upon with consignors or, in the absence thereof, the absolute discretion of Potter and Potter Auctions, Inc. The auctioneer may open the bidding on any lot below the reserve by placing a bid on behalf of the seller. The auctioneer may continue to bid on behalf of the seller up to the amount of the reserve, either by placing consecutive bids or by placing bids in response to other bidders. With respect to lots that are offered without reserve, unless there are already competing bids, the auctioneer, in his or her discretion, will generally open the bidding at half of the low estimate for the lot. In the absence of a bid at that level, the auctioneer may proceed backwards at his or her discretion until a bid is recognized, and then continue up from that amount.

**Auctioneer’s Discretion** - The auctioneer has the right at his or her absolute and sole discretion to refuse any bid, to advance the bidding in such a manner as he or she may decide, to withdraw any lot, and in the case of error or dispute, and whether during or after the sale, to determine the successful bidder, to continue the bidding, to cancel the sale or to reoffer and resell the item in dispute. If any dispute arises after the sale, our sale record is conclusive.

**Successful Bid** - The highest bidder acknowledged by the auctioneer will be the purchaser. In the case of a tie bid, the winning bidder will be determined by the auctioneer at his or her sole discretion. In the event of a dispute between bidders, the auctioneer has final discretion to determine the successful bidder or to reoffer the lot in dispute. If any dispute arises after the sale, the Potter and Potter Auctions, Inc. sale record shall be conclusive. Title passes upon the fall of the auctioneer’s hammer to the highest acknowledged bidder subject to the Conditions of Sale set forth herein, and the bidder assumes full risk and responsibility.

### AFTER THE SALE

**Buyer’s Premium** - In addition to the hammer price, the buyer agrees to pay Potter and Potter Auctions, Inc. a buyer’s premium of 20%, and the applicable sales tax added to the final total.

**Payment** - The buyer must pay the entire amount due (including the hammer price, buyer’s premium, all applicable taxes and other charges) no later than 5 p.m. on the seventh (7) business day following the sale. Payment in U.S. dollars may be made with cash; bank check or cashier’s check drawn on a U.S. bank; money order; or wire transfer unless other arrangements are made with Potter and Potter Auctions, Inc. Potter Auctions, Inc. reserves the right to hold merchandise purchased by personal check until the check has cleared the bank. The purchaser agrees to pay Potter and Potter Auctions, Inc. a handling charge of \$50 for any check dishonored by the drawee. In the event buyer desires to pay by using a credit card, a convenience fee equaling 2.5% of the entire amount due shall be added to the buyer’s invoice.

**Shipping Terms** - By Potter & Potter. Choice of packing and shipping method is strictly at the discretion of Potter and Potter Auctions. P&P generally provides in house shipping via FedEx or USPS to winning bidders. Please allow 3–4 weeks for delivery.



186



187

one of two



188



189

two of six



186. SKROCE, Steve. **Doc Frankenstein Signed Character Print.** [N.d.]. Horizontal color serigraph, SIGNED in silver marker (“Skroce”) to lower right. Black metal frame with glass glazing, 18 ½ x 38 ¾”. Provenance: The Wachowskis.

200/300

187. SKROCE, Steve. **Gambit #3 Cover Art and Page Panels.** 1999. Inked by Rob Hunter. Original cover art and panel for page 5 of *Gambit #3* issued on April 15, 1999 and featuring likenesses of the Wachowskis as the Mengos, thugs for hire working for The Pig. Matted and framed 23 ½ x 17 ¾”. Barcodes on frame verso identifying pieces as property of Ravenswood Kinowerks, Inc. Steve Skroce is a comic and film storyboard artist who created storyboards for *The Matrix*, *V for Vendetta*, *Speed Racer*, *Cloud Atlas*, and *Jupiter Ascending*. Provenance: The Wachowskis.

300/500

188. WACHOWSKI, Lilly (b. 1967). **Chicago Picasso.** Circa 2000s. Full color photograph depicting Chicago’s famous untitled Picasso outdoor sculpture set against the Richard J. Daley Center building at night. Framed and matted 26 ½ x 35”. This photograph appears in the Chicago Bulls intro video produced and directed by the Wachowskis before each home game from 2006-2014. Provenance: The Wachowskis.

200/400

189. WACHOWSKI, Lilly (b. 1967). **A Group of 6 Framed Photographs from the Set of Epilepsy Is Dancing.** 2009. Full color framed and matted photographs from the set of Antony and the Johnsons’ “Epilepsy Is Dancing” music video. 13 ½ x 17 ½”. The Wachowskis directed the “Epilepsy Is Dancing” video under the collective name AFAS. The video was choreographed by Sean Dorsey, and due to its content was banned in North America upon its release. Provenance: The Wachowskis.

300/500

END OF SALE



**Customer's obligation to inspect and report claims.** Potter and Potter professionally and safely packs and ships thousands of items every year, and insurance is provided for successful purchasers. In the unlikely event that damage or loss occurs, these are subject to our insurance carrier's rules and limitations. Customers are required to report, in writing, any damage or loss within 72 hours of receipt of merchandise. The carrier's delivery record shall be conclusive as to this matter.

**Correcting Shipping Address and report of non-receipt:** Prior to shipping winning lots, customers must provide Potter and Potter with a current and accurate shipping address. Once an order has been shipped, any address changes or updates are subject to a \$25.00 return to Sender fee, in addition to shipping charges.

In the event an item is lost during transit, it is customer's obligation to report non-receipt within 7 days of the date on which the item(s) were shipped.

**Third-party shipping.** Certain large, high-value, and fragile items will require the services of a professional packing and transportation company, or pick-up directly from our gallery. We suggest that you contact our Shipping Department before the sale for advice on the shipping and handling requirements that apply to the lots of interest to you.

If third-party shipping is chosen by the buyer or required by Potter & Potter, the buyer will arrange for removal of the merchandise from P&P within 15 days following the sale and must communicate and coordinate removal arrangements with P&P during regular business hours (Monday – Friday, 9am – 5pm).

Arrangements for third-party transportation are the responsibility of the buyer. We will not be responsible for the acts or omissions of carriers and packers whether recommended or not by us. Property will not be released to the shipper without the buyer's written consent and until payment has been made in full. Unless otherwise agreed, all purchases should be removed by the 15th day following the sale.

**Risk of loss or damage in shipment.** Any risk of loss or damage to the shipment through a third party carrier, once the item is removed from Potter and Potter, is at the risk of the buyer, and Potter & Potter is not liable for loss or damage of these items.

**Ship to address.** The winning bidder is responsible for providing Potter & Potter with an accurate address for the order destination as well as specific instructions for delivery.

**Shipping costs.** Shipping costs include charges for labor, materials, insurance, as well as actual shipper's fees. Buyer agrees to reimburse Potter & Potter the difference if actual shipper's fees exceed the invoice amount.

**Storage fees.** Potter & Potter will charge a storage fee of \$50 per week for any orders awaiting payment and/or removal for more than 15 days following the auction date. This cost shall constitute a lien against such property, which may be removed to a public warehouse at the risk, account, and expense of the purchaser.

**International shipping.** Potter and Potter ships internationally. All shipments will include an itemized invoice with the actual and correct purchase totals including the buyer's premium and shipping cost. International buyers are responsible for knowing their country's laws on importing items as well as paying all customs and duties fees on purchased items.

**Non-Payment** – If we do not receive payment in full, in good cleared funds, within seven (7) business days following the sale, we are entitled in our absolute discretion to exercise one or more of the following measures, in addition to any additional actions available to us by law: (1) to impose a late charge of one and a half percent (1.5%) per thirty (30) days of the total purchase price, prorated to commence on the date of the sale; (2) to hold the defaulting buyer liable for the total amount due and to begin legal proceedings for its recovery together with interest, legal fees and costs to the fullest extent permitted under applicable law; (3) to rescind the sale; (4) to resell the property publicly or privately with such terms as we find appropriate; (5) to resell the property at public auction without reserve, and with the purchaser liable for any deficiency, cost, including handling charges, the expenses of both sales, our commission on both sales at our regular rate, all other charges due hereunder and incidental damages. In addition, a defaulting purchaser will be deemed to have granted us a security interest in, and we may retain as collateral security for such purchaser's obligations to us, any property in our possession owned by such purchaser. At our option, payment will not be deemed to have been made in full until we have collected funds represented by checks, or in the case of bank or cashier's checks, we have confirmed their authenticity; (6) to offset against any amount owed; (7) to not allow any bids at any upcoming auction by or on behalf of the buyer; (8) to take other action as we find necessary or appropriate.

## LIABILITY

**Condition Reports** – Potter and Potter Auctions, Inc. is not responsible for the correctness of any statement of any kind concerning any lot, whether written or oral, nor for any other errors or omissions in description or for any faults or defects in any lot. Neither the seller, ourselves, our officers, employees or agents, give any representation, warranty or guarantee or assume any liability of any kind in respect of any lot with regard to merchantability, fitness for a particular purpose, description, size, quality, completeness, condition, attribution, authenticity, rarity, importance, medium, provenance, prior ownership history, or historical relevance. Except as required by local law any warranty of any kind whatsoever is excluded by this paragraph.

**Purchased Lots** – If for any reason a purchased lot cannot be delivered in the same condition as at the time of sale, or should any purchased lot be stolen, mis-delivered or lost prior to delivery, Potter and Potter Auctions, Inc. shall not be liable for any amount in excess of that paid by the purchaser.

**Legal Ramifications** – The rights and obligations of the parties with respect to these Conditions of Sale, the conduct of the auction and any matters connected with any of the foregoing shall be governed and interpreted by the laws of the jurisdiction in Illinois. If any part of these Conditions of Sale is found by any court to be invalid, illegal or unenforceable, that part shall be discounted and the rest of the conditions shall continue to be valid to the fullest extent permitted by law.

**Discretion** - Any and all of the conditions may be waived or modified in the sole discretion of Potter and Potter Auctions, Inc.

Potter and Potter offers historically significant items which may include culturally insensitive material, including but not limited to racist and sexist content. The content and form of such items does not reflect the views or values of the auctioneers or staff.

Potter & Potter Auctions, Inc.  
(Illinois Lic. # 444.000388)  
5001 W. Belmont Ave.  
Chicago, IL 60641

Phone: (773) 472-1442  
Fax: (773) 260-1462  
www.potterauctions.com  
info@potterauctions.com

Gabe Fajuri, Managing Auctioneer  
Lic. #441.002150

Text: Joe Slabaugh, Josh McCracken, and Gabe Fajuri  
Layout: Stina Henslee  
Photography: Shelby Ragsdale and Liz Vitlin

Note: Many supplemental and detailed images of auction lots ~ not shown in the pages of this catalog ~ are available online at [Liveauctioneers.com](http://Liveauctioneers.com), or directly from Potter & Potter.

Potter & Potter wishes to thank Linda Orr, Ethan Friedman-Brauner, Ben Lefton, Wes Mathison, Lilly Wachowski, and Dave Walsh for their assistance in the preparation of this catalog.

Contents copyright © 2022 by Potter & Potter Auctions, Inc.

All rights reserved. No part of this publication may be reproduced or transmitted in any form or by any means, electronic or mechanical, including photocopy, recording or any information storage and retrieval system now known or to be invented, without permission in writing from the copyright holders.







POTTER & POTTER AUCTIONS, INC.  
WWW.POTTERAUCTIONS.COM