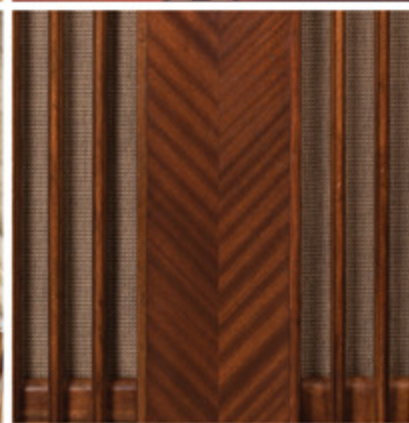


**POTTER
&
POTTER
AUCTIONS**

COIN-OP & ADVERTISING

SEPTEMBER 29, 2018





PUBLIC AUCTION #064

COIN-OP & ADVERTISING

AUCTION

September 29, 2018
10:00am CST

PREVIEW

September 26-28
10:00am - 5:00pm
or by appointment

INQUIRIES

info@potterauctions.com
phone: 773-472-1442

CONTENTS

Coin-Operated Machines	2
Slot Machines	3
Trade Stimulators & Penny Arcade	12
Vending	30
Jukeboxes	45
Pinball & Video Arcade	53
Advertising	61
Posters	82
Miscellaneous	90
Toys	108



POTTER & POTTER AUCTIONS, INC.
3759 N. RAVENSWOOD AVE. SUITE 121
CHICAGO, IL 60613



COIN-OPERATED MACHINES

Lot 9



SLOT MACHINES

1. Auto-Bell Novelty 10 Cent Electric Slot Machine. American, ca. 1955. 27 x 15". Lock and key. Not tested.

100/200

2. Bell-Fruit 1 (New Penny) "Soccer" Slot Machine. England: Bell-Fruit Mfg. Ltd., ca. 1960. 60". Lock and key. Not tested.

100/200

3. Buckley 10 Cent Criss Cross \$15 Guaranteed Jack Pot Slot Machine. Chicago: Buckley Mfg. Co., ca. 1948. \$15 guaranteed jackpot. Lock and key. Left hand reel strip glass cracked. Not working.

1,000/1,500

4. Buckley 5 Cent Criss Cross Electronic Pointmaker. Chicago: Buckley Mfg. Co., 1956. A conversion of one of Buckley's earlier mechanical machines. Lock, no key. Not tested.

200/400



5



9



10



11



6



7



8



13



12

5. Eureka Nickel/Coin Drop Payout Slot Machine. Eureka [?], ca. 1898. Unusual curved wooden cabinet with two column design and window at front. 18 x 12 x 19 1/2". Top cracked. Lock and key. Working.

2,000/3,000

Believed to be manufactured by Eureka, but the exact origin and working of the machine is unknown as no other examples have been encountered. The front window exhibits jackpot prizes and must be filled manually.

6. Günter Wolff "Beromat" Slot Machine. Berlin, ca. 1955. Wood case. 29 x 17 1/2". Lock, no key. Not tested.

100/200

7. Günter Wolff 1d (English Penny) "Exacta" Slot Machine. Berlin, ca. 1955. Wood case. 29 x 17 1/2". Lock, no key. Not tested.

100/200

8. Günter Wolff 1d (English Penny) "Golden Bell" Slot Machine. Berlin, ca. 1955. Wood case. 29 x 17 1/2". Lock, no key. Not tested.

100/200

9. "The Illinois" Single Wheel Gambling Slot Machine. 1890s. Place a coin at top and slide the mechanism to see if you have chosen the right odds to win.

3,500/5,000

10. O.D. Jennings 1 Cent Little Duke Slot Machine. Chicago, ca. 1931. Lock and key. Not working.

1,500/2,500

11. O.D. Jennings 10 Cent Club Chief Slot Machine On Stand. Chicago, ca. 1946. Modern claw foot stand. Locks and key. Light pitting on top casting, otherwise very good.

1,000/2,000

12. O.D. Jennings 25 Cent Tic-Tac-Toe Light Up Club Chief. Chicago, ca. 1960. Lock and key. Working.

1,500/2,500

13. Jennings Poinsettia 10 Cent Slot Machine with Stand. Chicago: Pace Mfg., ca. 1929. Finish lightly worn, but attractive patina overall. 25" high. Stand added later. Keys. Working.

800/1,200



16



17



18



19



20



21



14



15

14. Lowen & Wolff 3D "Rotamint" Slot Machine. Germany, ca. 1960. 28 x 20". Lock, no key. Not tested.

100/200

15. Lowen & Wolff "Rotamint" Slot Machine. Germany, ca. 1960. 28 x 20". Lock, no key. Not tested.

100/200

16. Mills 5 Cent Owl Jr. Upright Slot Machine. Chicago: Mills, ca. 1898. Original parts including head and center tin lithographed wheel (worn), housed in a re-created upright wooden cabinet. 54" high (not including head). Working.

1,500/2,500

17. Mills 5 Cent Full Figure Indian Chief with War Eagle Slot Machine. Chicago, ca. 1945. Height 68". Lock and key. Not working.

2,000/4,000

Mills did not make the carved wooden figure, but several gaming companies from the 1980s onward used Mills machines in a variety of standing figures such as this, as well as cowboys, Native Americans, golfers, and gangsters. The same is also true of the next three lots.

18. Mills 10 Cent "The Bandit" with High Top Slot Machine. Chicago, ca. 1945. Height 68". No lock or key. Working.

2,000/3,000

19. Mills 5 Cent "The Westerner" with Hi Top Slot Machine. Chicago, ca. 1940. Height 68". Lock and key. Working.

2,000/3,000

20. Mills 25 Cent "Marshall" with Hi Top Slot Machine. Chicago, ca. 1940. Height 68". Lock and key. Working.

2,000/3,000

21. Mills 5 Cent Gooseneck FOK Vendor Slot Machine. Chicago, ca. 1932. Lock and key. Working.

1,500/2,000

22. Mills 5 Cent "Flasher" Electro-Mechanical Slot Machine. Chicago, ca. 1937. Back glass and playfield excellent. There does not seem to be a payout cup for a cash payout, which was probably provided by the bartender or attendant. 54 x 20". No lock or key. Not tested.

600/900



22



23



24



25



29



30



31



26



27



28



32



33



34

23. Mills 5 Cent \$10 Special Award Hi Top Slot Machine. Chicago, ca. 1945. Lock, no key. Working.

1,000/1,500

24. Mills 5 Cent Bursting Cherry Slot Machine with Stand. Chicago, ca. 1937. Working. Lock, no key. Modern stand. Very good.

1,000/2,000

25. Mills 1 Cent Castle Front Slot Machine. Chicago, ca. 1931. Lock, no key. Working. Very good. Uncommon in this denomination.

1,500/2,500

26. Mills 5 Cent Castle Front Slot Machine. Chicago: Mills, ca. 1939. Classic slot machine. Height 25". Lock and key. Working.

1,000/1,500

27. Mills 5 Cent Castle Front Slot Machine. Chicago, ca. 1931. Lock and key. Working. Very good.

1,000/2,000

28. Mills 5 Cent Castle Front Slot Machine With Claw Foot Stand. Chicago, ca. 1935. Lock and key. Working. Very good.

1,000/2,000

29. Mills 10 Cent Castle Front Slot Machine. Chicago, 1930s. Original, unrestored machine. Working. Lock and key.

1,000/1,500

30. Mills 10 Cent Gold Award Castle Front Slot Machine. Chicago, ca. 1931. Lock and key. Gold award tokens in machine. Working. Very good.

1,500/2,500

31. Mills 25 Cent Castle Front Slot Machine. Chicago, ca. 1931. Lock and key. Working. Very good.

1,500/2,500

32. Mills 5 Cent Cherry Front Slot Machine. Chicago, ca. 1937. Front panel having a "diamond" lower half and "cherry" upper half. Lock and key. Not working.

1,000/1,500

33. Mills 5 Cent Cherry Front Slot Machine. Chicago, ca. 1937. Lock and key. Working.

1,000/1,500

34. Mills 5 Cent Cherry Slot Machine. Chicago, ca. 1940s. Wooden case with cast black metal front, chrome and enameled detailing. 28 x 16 x 13". Professionally restored. Lock and keys.

500/700



35



36



37



38



39



40



41



42



44



43



45



46

35. Mills 50 Cent Cherry Front Slot Machine. Chicago, ca. 1937. Lock and key. Not tested. Uncommon in this denomination.

1,500/2,500

36. Mills 5 Cent Diamond Front Slot Machine With Stand. Chicago, ca. 1933. Lock and key. Modern stand. Working.

1,000/2,000

37. Mills 5 Cent Thunderbird QT Slot Machine. Chicago, ca. 1934. Lock and key. Not working.

1,500/2,000

38. Mills 5 Cent Sweet Heart QT Slot Machine. Chicago, ca. 1941. Lock and key. Working.

1,500/2,000

39. Mills 5 Cent Chevron QT Slot Machine. Chicago, ca. 1938. Lock and key. Not working.

1,500/2,000

40. Mills 5 Cent Vest Pocket Slot Machine. Chicago, ca. 1940. Original lock, no key. Cigarette reel strips in need of replacement. 11 x 8". Not working. Small payout slot machines such as this and the following lot, used on bar tops, could be quickly hidden in case of a raid.

200/400

41. Mills 5 Cent Chrome Plated Vest Pocket Slot Machine. Chicago, ca. 1940. Lock and key. reel strips. 11 x 8". Not working.

200/400

42. Omega 25 Cent "Double Up" Black Jack Machine. American, ca. 1960. 60". Lock and key. Not tested.

100/200

43. Pace Silver Dollar Slot Machine. Working. Lock and key.

1,200/1,800

44. Sega Enterprises 5 Cent Upright Console Slot Machine. Japan, ca. 1955. 60". Lock no key. Not working.

400/600

45. Mr. Magic Electric Pachislo Slot Machine. Japan, 1990s. Blinking lights and colorful display in English and Japanese. Height 32".

50/150

46. Watling 10 Cent Rol-A-Top Slot Machine. Chicago, 1935. Lock and key. Not working.

2,000/3,000



55



56



57



58



59

55. J.D. Drushell Co. "Try-Skill" 1 Cent Trade Stimulator. Chicago, ca. 1929. Drop a penny in the slot and manipulate it into the pocket with the arrow. Lock and key. Paint appears original. 13 x 7". Excellent.

500/1,000

56. J.D. Drushell Co. "Roll Skill" 1 Cent Trade Stimulator. Chicago, ca. 1929. Roll the penny to the bottom slot by manipulating the lever on the right. Lock and key. 13 1/2 x 7 1/4". Very good.

500/1,000

57. Monarch Pee-Wee 5 Cent 36 "Lucky Play" Dice Machine. Chicago (?), ca. 1935. Aluminum case with six small dice. Award card hand drawn. Lock, no key. 9 x 8". Working.

600/1,000

58. Two Mills 1 Cent "Little Perfection" Five Reel Poker Trade Stimulators. Chicago, ca. 1901. Comprising: (1) Housed in oak case with original lock and keys. No marquee. 11 x 9". Very good. (2) Housed in oak case. Lock and key. Cards on reels need to be replaced. 11 x 9". Fair.

400/600

59. Exhibit Supply 1 Cent "Star Cigarette Merchandiser" Penny Flip. Chicago, ca. 1936. Flip a penny into one of the cigarette pockets on the bottom and win a pack of Lucky Strike, Camel, Old Gold, or Chesterfield cigarettes. Original lock and key. 19 1/2 x 17 1/2". Very good.

600/1,000



60



61



63



64

60. G.F. Hochriem "The Booster" 5 Cent Dice Trade Stimulator. American, ca. 1933. Shake a number and win up to three beers. Lock and key. 14 x 10". Working.

200/400

61. Adams Ball Gum Trade Stimulator. Circa 1935. Guess the color of the ball vended to win one or more packages of Adams Gum. Wooden cabinet and painted glass front, original paper. 17 1/2" high. Lock and key.

300/500

62. Spiral "Winner" Trade Stimulator. Circa 1895. Drop a coin down the spiral track to win tokens or merchandise in trade. 10 1/2 x 10 1/2 x 17". Finish and decal worn, but good condition.

1,500/2,500



62

63. Lucky Coin Tosser Trade Stimulator. Kansas City: A.J. Stephens, ca. 1930. Machine pitches pennies into numbered holes. Mint green sheet metal with original marquee and paper. 13 1/2 x 6 1/2 x 9 1/2". Key. Working.

400/600

64. Refund Meter Dice Trade Stimulator. Housed in an aluminum case, not coin operated. After you make your purchase, you have a free chance to push the rod in and shake the dice. Four of a kind and you get your purchase for free. Lock and key. 11 3/4 x 10 1/4". Excellent.

200/400

65. Exhibit Supply Steeplechase 1 Cent Trade Stimulator. Chicago, ca. 1932. Drop a penny in the slot, pull the lever down and watch the marbles race to the bottom. Lock, no key. 17 x 14". Working. Excellent.

400/600



65



66



70



71



72



73



67

66. Groetchen Tool & Mfg. Co. Pike's Peak 1 Cent Skill Trade Stimulator. Chicago, ca. 1933. Test your skill by moving the ball up the mountain. Lock and key. 13 x 13". Working. Excellent.

200/400



68

67. Groetchen Tool & Mfg. 5 Cent Pike's Peak Skill Arcade Game. Chicago, 1950s. Five balls for five cents. Try to climb to the top each time. 13 x 13 x 10 1/2". Lacking stand and key. Good working condition.

200/400

68. Groetchen Tool & Mfg. Co. Pok-O-Reel 1 Cent Aluminum Trade Stimulator. Chicago, ca. 1930. Playing card reel strips and suit symbols on top. Original. Lock and key. Working. 11 x 9 1/2 x 8 1/2". Lacks key. Replacement pay-out card.

500/700



69

69. Groetchen Tool & Mfg. Dixie Spelling Bee Countertop 5 Cent Trade Stimulator. Chicago, ca. 1937. Cast aluminum façade and rear door, wooden cabinet, five lettered reels in which the player scores by spelling Bingo, Keeno, or Dixie. 12 x 13 x 9". Working. Lacking key, but sold with replacement lock with key.

300/500

70. Electroskill Baseball Penny Drop Game. Los Angeles: Evans-Kirk, ca. 1940. Attractive penny drop with baseball theme. Hit pegs connected to lights to illuminate them. 13 1/2 x 8 x 20". Penny drop mechanism working; not tested with batteries. Lock and key. Bright and attractive paint.

800/1,200



74



75



76

71. Electroskill Baseball Penny Drop Game. Los Angeles: Evans-Kirk, ca. 1940. Attractive penny drop with baseball theme. Hit pegs connected to lights to illuminate them. 13 1/2 x 8 x 20". Penny drop mechanism working; not tested with batteries. Lock and key. Paint well worn.

700/900

72. Kitzmiller's Automatic 1 Cent Salesman. Matheson Novelty Co., ca. 1925. Penny drop gumball vendor. Oak cabinet with windows at both sides. Height 18". Keys. Working. Uncommon.

400/600

73. Penny Drop Machine. Maker unknown, ca. 1950. Wooden cabinet. Playfield depicts two bears attacking a beehive, and a fisherman. 10 x 9 x 17 1/4". Lock and key. Working.

200/400

74. Fortune Teller Penny Drop Machine. Circa 1910. The drop of a penny determines your fortune, based on the chute the coin drops in. Original fortune card. Oak cabinet. 13 1/4 x 8 x 18 3/4". Lock and key. Working.

300/500

75. "Bogey Three" Golfball Trade Stimulator. Sussex: Liason Ltd., ca. 1950. Winners receive vouchers for golf balls. 12 x 9 x 12". Lock and key. Working.

250/350

76. Vintage Cast Iron Football Machine. 1940s. Red skill game gumball machine. Make the ball into one of holes and win a gumball. Working, original lock and key. 11 x 6 3/4 x 15 1/2". Repainted, wear and rust to iron. Very good.

200/300



77



81



78



79



80



82



83



84



85



86



87

77. **Bluebird One Cent Penny Drop Machine.** 1930s. After a penny is inserted, the player receives a gumball and attempts to control a chute in the lower compartment for a chance to win the money back.

1,200/1,600

78. **Heads or Tails One Cent Trade Stimulator.** Insert a penny and watch the reels spin to number and coin showing heads or tails.

450/850

79. **Penny Ante One Cent Trade Stimulator.** 1930s. Flip the penny in the right area to light up the eyes. With key. Height 13 1/2".

450/850

80. **Pace One Cent Whiz Ball Trade Stimulator.** Chicago, ca. 1930s. Insert a penny and flip the lever to earn points based on which hole the ball drops into. Working, with key.

350/550

81. **Skipper One Cent Drop Gambling Machine.** Skipper Sales, ca. 1942. Working. Key.

300/500

82. **Tol Boul Trade Stimulator.** France, 1960s. Rotate the sphere, use the spigot to insert one franc coin. Winnings paid by counter service according to what color bead shows up in the window. 13 x 12 x 7". Original lock and key. Slight soiling and scrapes. Very good.

100/200

83. **Island Distributing 1 Cent "Your Fortune" Trade Stimulator.** Galveston, ca. 1950. Wooden body with Plexiglas covers. Put a penny in, the dice roll to tell your fortune and a gumball is dispensed on the side. 21 x 12 x 15". Working, no keys. Slight soiling, small cracks to wood. Partial State of Texas gaming license affixed to rear (1950s). Very good.

100/200

84. **Hot Rod Booze Barometer.** Morris, Ill.: Northwestern Corp., 1950s. Sheet metal. Tests the sobriety of bar patrons to move the ring along the curved rod without touching the metal. 18 x 18 1/2 x 7". Lock and key. Expertly restored, working. Excellent.

400/600

85. **Drinker Tinker Arcade 5 Cent Skill Game.** Kaye, ca. 1967. Five-cent steady-handedness sobriety game in which the player attempts to guide a narrow hoop across a wavy metal bar without touching the sides. Chipping to side panels, left side plastic strip slightly peeling at top. 21 x 20".

300/500

86. **Football Punt Return 5 Cent Booze Barometer.** Northwestern Mfg. Co., ca. 1950. Football-themed "booze barometer" skill game. See how far you can run the ball back before shorting out. Lock and key. Not tested. Height 17 1/2".

300/500

87. **Mills 10 Cent Panoram Floor Model Movie Machine.** Chicago, ca. 1941. Highly desirable arcade machine not normally found in this excellent condition. 80 x 30". Lock and key. Not tested.

8,000/12,000



88



90



91

88. **Pull the Tiger By the Tail 1 Cent Strength Machine.** John Papa, ca. 2000. One of 12 reproductions of a machine originally manufactured by Exhibit Supply Co. in Chicago. Oak cabinet, cast iron tiger and foot plate. Pull the tail with enough energy and hear the tiger roar. 65 x 30". No lock or key. Working. Excellent.

4,000/6,000

89. **Punch-A-Bag 1 Cent Floor Model Arcade Machine.** New York: International Mutoscope Reel Co., ca. 1910. Floor model oak cabinet. Appears to be all original, no back door. Drop a penny in the slot, pull the punching bag down and give it a whack. 80 x 34". Not working.

4,000/6,000

90. **Sheldon, Dickson & Steven 10 Cent Magic Baseball Arcade Machine.** Omaha, ca. 1966. 65". Lock, no key. Unusual. Not tested.

1,000/2,000

91. **Mills Flip Skill Arcade Game.** Chicago: Mills Novelty Co., ca. 1935. Use eight levers at the side of the cabinet to flip the ball upward to score. Attractive seal graphic on playfield. Height 33 1/2". Finish worn, back panels splitting, lacks scorecard. No lock or key.

800/1,200



89



92



93



94



95



96

92. **Cast Iron 10 Cent Clam Shell Mutoscope With Reel.** New York: American Mutoscope and Biograph Co., ca. 1900. Height 73" inclusive of marquee. Lock and keys. One side panel, marquee and base reproductions. Probably aluminum. Not tested.

2,000/4,000

93. **Cast Iron 10 Cent Clam Shell Mutoscope With Reel.** New York: American Mutoscope and Biograph Co., ca. 1900. Height 73" inclusive of marquee. Lock and keys. Marquee and base reproductions. Probably aluminum. Crack on left side panel. Not tested.

2,000/4,000

94. **Tin Mutoscope 1 Cent With "Raiding the Speakeasy" Reel on Wire Stand.** New York: International Mutoscope Co., ca. 1930. Height 51" inclusive of marquee. Lock and keys. Working. Light bulb needs to be replaced, otherwise very good.

1,000/3,000

95. **Tin Mutoscope 1 Cent With "Gotcha That Time" Reel on Wire Stand.** New York: International Mutoscope Co., ca. 1930. Height 51" inclusive of marquee. Lock and keys. Not tested.

1,000/3,000

96. **Tin Mutoscope 1 Cent With "Sink or Swim" Reel on Wire Stand.** New York: International Mutoscope Co., ca. 1930. Height 51" inclusive of marquee. Lock and keys. Not tested.

1,000/3,000



97

98



102

97. Tin Mutoscope 1 Cent With "True Romance" Reel on Wire Stand. New York: International Mutoscope Co., ca. 1930. Height 51" inclusive of marquee. Lock and keys. Not tested. **1,000/3,000**

98. Tin Mutoscope 1 Cent With "Back Stage Mayhem" Reel on Art Deco Style Solid Metal Stand. International Mutoscope Reel Co., ca. 1935. Height 67" inclusive of marquee. Lock and keys. Not tested. **1,000/3,000**

99. Tin Mutoscope 1 Cent With "Down for the Count" Boxing Reel. New York: International Mutoscope Reel Co., ca. 1935. Locks and keys. 28 1/2 x 8". Working. Very good. **1,000/3,000**



99

100

100. International Mutoscope Co. 5 Cent Viewer. New York, ca. 1920s. Red cast iron with engraved brass plaque and hand crank. Unrestored. Electric light source. 17 x 13 x 8 1/2". No keys. **300/500**

101. Partial Mutoscope Reel. Subject No. 2826. New York: American Mutoscope and Biograph Co., ca. 1900. Lacking a portion of the reel, some other segments held weakly or detached. **50/100**



101

102. Mutoscope Reel Subject No. 7712. "The Gay Senorita." New York: International Mutoscope Reel Co., ca. 1920s. A transvestite woman performs an erotic dance against a black background. A few cards loose, scattered creases and soiling to edges. Scarce. **400/600**



103

103. Photograph of Peep Show Burlesque Arcade Stills. Circa 1900s. Gelatin print of ten frames, numbered 64/1-10, showing a man looking through a keyhole as a woman reveals her legs. Archivaly framed and matted, image area 11 x 18". Fine. **150/250**

104. Genco 10 Cent Grandma Fortune Teller. Chicago, ca. 1957. Many boxes of the rolled-up fortunes. Canopy not original. Motor works. Zodiac front panel. Locks and keys. 68 x 21". Front glass cracked. **4,000/6,000**

105. Animated 5 Cent Fortune Teller. New York: Roovers (?), ca. 1910. Animated grandmother-type figure in wooden cabinet with attractive cast marquee and crystal ball on table. Cast iron base. Keys. Original mechanism, other parts re-created. **3,000/5,000**

The only example of a fortune teller in this form known. Possibly manufactured by Rosenfield, though the origins of the machine are unknown.

106. Wee Gee One Cent Fortune Teller. 1930s. Insert penny into the question you want answered and as the penny falls the machine will give out the answer. Working, with keys. **650/950**

107. Exhibit Supply Co. 1 Cent True Love Letter Post Office. Chicago, 1925. Often used as a fortune teller, the machine dispenses a postcard with a photo and description of your future partner. 72 x 17 x 10". Not working, keys included. Slight soiling, else very good. **400/600**



104

105



106



107



108



110



109



111



112



113

108. **Advice for Single Women Love Tester Machine.** Chicago: Exhibit Supply, ca. 1935. Coin-operated arcade machine with glass front. Attractive marquee and glass front. 25 1/2" high. Keys. Working.

300/600

109. **The Magic Mirror One Cent Fortune Teller.** 1930s. Insert a penny and the answer to your fortune will appear on the mirror. The only known example of this machine.

2,500/3,500

110. **One Cent Mills Wizard Fortune Teller Trade Stimulator.** Reproduction metal casting, oak cabinet stamped "6244," with key. 19 x 12 x 5".

500/700

111. **Spin-O 1 Cent Merchandiser Trade Stimulator.** Chase Vending Machine Co., ca. 1940. Bright paint. 12 x 6 x 21". Lock and key. Working.

200/400

112. **Trimount Snack Penny Vending Machine.** Boston: Trimount Coin Machine Co., ca. 1940. Original paint shows some wear. 14 1/2 x 7 x 20". Lock and key. Lacks glass. Working.

300/500

113. **Baseball Penny Arcade Game.** Whiteside, ca. 1925. Launch a ball into one of twelve slots to score points. Oak cabinet, original paper. 18 1/4 x 10 x 21". Lock and key. Working.

400/600



114



115



116



117

114. **Quadmatic Four-Sided Arcade Game.** England: Bryans Automatic Machine Works, ca. 1961. Four pinball-like flipper games on a single handsome crackle-finish wooden base and frame, topped with cast nameplates. Height 70". Two keys. Finish rubbed and worn, but good condition. Operates with old English pennies (not tested). Scarce.

1,500/2,000

115. **Floor-Model Coin-Operated Strength Tester.** Germany, ca. 1930. User squeezes two handles at front to test strength. Operates with two dimes. Lurid graphics on faceplate. Height 40". No keys. Working.

600/900

116. **Strength and Grip Tester Penny Arcade Machine.** Minneapolis: National Novelty Co., ca. 1905. Cast iron machine tests your grip in two ways (finger pull or single hand pull), or your strength with a pull from both hands. Height 71" inclusive of of marquee. Lock, no key. Working.

1,500/2,500

117. **Caille 1 Cent Hercules Grip Test Arcade Machine.** Detroit: Caille Bros, ca. 1904. Expertly restored machine tests your grip against those of trades and professions listed on the original paper dial. On a Mills pedestal stand. Reproduction marquee. Height 60 1/2". Paint bright and attractive. Locks and keys. Working.

2,500/4,500



118

118. **A.B.T. 1 Cent Billiard Practice Shooting Game.** Chicago, ca. 1931. Five shots for one cent. Player tries to shoot ball into one of the pockets with the pistol. Playfield excellent. Original lock, key and cashbox. 25 x 15". Working. Excellent.

1,500/2,500



119



120



123



124



121



122

119. **A.B.T. 1 Cent Pinball Game.** Chicago, ca. 1931. Ten balls for a penny. Original lock and key. 25 x 15". Working. Excellent.

1,000/2,000

120. **American Beauty Pinball Machine.** Chicago: Daval Mfg., ca. 1934. Pre-flipper pinball game with rose-themed playfield. 36 x 16 x 42". Minor wear to finish and paper. Lock, no key. One leg loose. Working.

500/1,000

121. **A.B.T. 5 Cent U.S. Marshall Silver Dollar Saloon Target Shooting Game.** Chicago, ca. 1955. Lock and key. Metal parts corroded, cabinet good. No legs.

100/200

122. **Exhibit Supply 5 Cent Novelty Merchantman Claw Machine.** Chicago, ca. 1933. Art Deco style cabinet. Drop a nickel in the coin entry and crank the handle to position the crane to drop down and grab a prize and deliver it into the bin. With a quantity of modern prizes. Locks, no keys. 70 x 23". Lights work but crane needs slight adjustment.

2,000/4,000

123. **Exhibit Supply 1 Cent Disposition Register.** Chicago, 1933. Insert penny, squeeze the handle and find out how you feel. Original lock, no key. 18 1/2 x 11 1/2". Not tested.

400/600

124. **D. Gottlieb & Co. 1 Cent Grip Tester.** Chicago, ca. 1935. Lock and key. Working. 12 3/4 x 8 3/4". Repainted, otherwise very good.

300/500



125

125. **Electra Shooting Gallery.** French, ca. 1910. Early shooting game. Mechanism, gun, and case with metal stand. 21 x 9 x 24 1/2" (excluding stand). Not working and in need of repair. Still, a rare and desirable early arcade game, believed to be one of only a handful known.

3,000/5,000

126. **Pee-Wee Skill Score Arcade Game.** Chicago: Genco, ca. 1940. Flip balls into one of nine chutes to score. 10 x 14 1/2 x 24". Finish worn.

400/600

127. **Mills 1 Cent Drop Card Stereo Viewer.** Chicago: Mills Novelty, ca. 1928. Oak cabinet with cast feet and hardware. "Great San Francisco Earthquake" marquee. 72 1/4 x 20 1/2 x 17". No lock or key. Working.

2,000/4,000

128. **Cail-O-Scope 5 Cent Arcade Stereo Viewer.** Detroit: Caille Bros., ca. 1905. Quarter-sawn oak cabinet with cast feet and hardware. "The Great City of Detroit" repro paper in marquee. 72 x 20 x 19". Keys. Working.

2,000/4,000

129. **Alex Beckers Stereoscope Card Viewer.** New York, ca. 1909. Nice rosewood case with eleven stereo cards including: President Woodrow Wilson and his Cabinet; two showing the devastation of the 1906 San Francisco earthquake; and one showing the Wright Brothers airplane in flight in Ft. Meyer, Va. 19 x 9 3/4". Excellent.

400/600



126



127



128



129



132



133



130



131



134



135

130. Whiting's Sculptoscope One Cent Stereo Card Viewer. Working. With key.

600/800

131. Mills 5 Cent Wood Stereo Card Viewer With Marquee and Set of Stereo Cards. Chicago, ca. 1935. Oak case with marquee and set of stereo cards. Coin entry new. Lock and key. 41 1/2 x 19 1/2". Not tested.

600/900

132. Gun Smoke 5 Cent Upright Game. Chicago: Games Inc., [n.d.]. Lock and key. Glass excellent. Some rust. Not tested.

100/200

133. Penny Pitch 25 Cent Upright Game. American: Williams, 1973. Lock and key. Not tested.

200/400

134. Sega Jockey Club (Derby Day) 25 Cent Upright Game. American, ca. 1970. Pachinko style game. Flip the ball through the pins and into the right hole moves the horses on top forward. If the horse you wagered on wins, a prize is automatically dispensed. No key. Not tested.

400/800

135. Zingo 5 Cent Vertical Cabinet Arcade Machine. Chicago: Williams Mfg. Co., ca. 1944. Five cents for five balls. 86 x 22". Lock and key. Upper glass and playfield excellent. Working. A collectable machine, and the first made by Williams Mfg., which has remained in business to this day.

1,000/2,000



136



137



139



138



141



140



142

136. I.Q. Computer 25 Cent Upright Game. American: Nutting, 1980. No key. Not tested.

200/400

137. Skatter Ball Countertop Arcade Game. Dobco Enterprises, ca. 1990s. Electric arcade game, hard plastic and Lucite with original decals, light-up launcher arch, the player manually moves a basket side to side and wins a prize if the ball lands inside. Height 33". No balls, launcher not tested.

150/250

138. Two Sets of Risqué Stereoscope Cards. Including a set of 15 reclining nudes in various positions; and a set of 12 "When Bidy Served Tomatoes Undressed."

100/200

139. Cast Iron Marquee for Tin Mutoscope. New York: International Mutoscope Reel Co., ca. 1930. Marquee only. 16 x 9". Excellent.

100/200

140. Large Papier-Mache Hand With Pointing Finger. Trade or arcade sign pointing customers in a certain direction. Length 35 3/4". Some chips, paint losses and cracks, but overall very good stable condition.

50/100

141. Stereo Film Strip 5 Cent Viewing Arcade Machine. American, ca. 1931. With a partial film strip. 12 1/2 x 12 1/2". Not tested. Fair.

100/200

142. Perey Ticket Turnstile. New York, ca. 1950. Turnstile for movie theater or amusement ride entry. Height 40". Excellent.

200/300



143



144



145



148



149



150

VENDING MACHINES

143. **Abbey Mfg. 1 Cent Ball Gum Vendor.** St. Louis and Los Angeles, ca. 1930. Aluminum base and lid with tray. Lock, no key. Company name and location embossed on lid.

100/200

144. **Abbey Mfg. 1 Cent National Hunter Gumball Vendor.** Los Angeles, 1949. Put a penny in the gun, knock down a duck and win a gumball. Original lock and key, does not include stand. 19 x 18 1/2 x 9". Paint chipped and worn, soiling and scrapes. Working. Good.

150/250

145. **Reliable Nut Co. (Abbey) 5 Cent Confection Vendor.** Los Angeles, ca. 1930. Perhaps issued by the Los Angeles location of Abbey Mfg. Aluminum base and lid with tray. No key. Company name and location embossed on lid. Working.

100/200

146. **Ad-Lee Zig Zag Penny Gumball Vendor.** Chicago: Ad-Lee Co., Inc., ca. 1930s. Native Americans and roaring lions fill the field. A combination vending machine, arcade game, and gambling machine (coin is returned to player if skillful enough). 11 x 12 x 28". No lock. Not working. Uncommon.

1,000/1,500

147. **Advance Machine Co. 1 Cent Confection Vendor.** Chicago, 1923. Nicknamed the "Big Mouth" in reference to the big mouth with the swivel door that holds the product until pushed. Wall mounting bracket on rear. Cast iron base and lid. Lock and key for lid. Not working.

400/600



146



147



151



152



153

148. **Advance Machine Co. 1 Cent Ball Gum Vendor.** Chicago, ca. 1936. Cast iron base and lid. Appears repainted. Lock and key for lid, no key for base. Working.

200/400

149. **Ajax Cast Aluminum 10 Cent Triple Hot Nut Vendor.** Newark, ca. 1940. Although the decal reads for 10 cents, the machine works on a nickel. 21 3/4 x 16 1/4". Original locks and keys. Heating element not tested. Mechanics working.

400/600

150. **Appleton Confection Co. 1 Cent Confection Vendor.** Appleton, Wisc., ca. 1927. Aluminum base and lid. Lock and key. Working.

200/400

151. **Columbus 1 Cent Model A Ball Gum Vendor.** Columbus, ca. 1927. Cast iron porcelain base and lid. Two barrel locks, but one key. Minor chipping to porcelain base and lid, small crack to globe. Working.

300/500

152. **Columbus 5 Cent Model A Nut Vendor.** Columbus, ca. 1927. Painted aluminum base and lid. Two barrel locks with keys. Embossed globe. Small crack in lid. Working.

300/500

153. **Columbus 5 Cent Model A Nut Vendor.** Columbus, ca. 1927. Re-painted aluminum base and lid. Two barrel locks with keys. Embossed globe. Working.

300/500



154



155



160

154. Columbus Model "M" Gumball Vendor. Columbus, ca. 1935. Height 14 1/2". Locks, no keys. Not working. 250/350

155. Columbus-Made Gumball Vendor. Columbus, ca. 1940. Possibly manufactured for the Belgian market. Chute does not open; gumballs are dispensed from a hole underneath the chute. Height 15 1/2". No locks or keys. Working. 250/350

156. Victor Vending Co. 1 Cent Topper Bulk Vendor. Chicago, ca. 1938. Original red wrinkle paint over pressed steel. Top painted black. Original lock and key. Working. Very good. 200/300

157. Victor Vending Co. 1 Cent Topper Bulk Vendor. Chicago, ca. 1938. Pressed steel. Original decal and red paint. Original lock and key. Working. 200/300

158. Columbus 1 Cent Model M Ball Gum Vendor. Columbus, ca. 1930. Painted aluminum, base and lid. Embossed hexagonal globe. Two barrel locks, one key. Working. 200/400

159. Columbus Vending Co. 1 Cent Model A Nut Vendor. Columbus, ca. 1920. Aluminum base and steel lid. Green paint. Embossed globe. Barrel lock and key. Working. Very good. 300/400

160. Scoopy 1 Cent Gumball Machine. A & M Manufacturing, ca. 1955. Animated Scoopy figure dispenses gumballs when coin is inserted. 11 1/2 x 7 x 18 1/2". Minor paint wear. Working. 1,200/1,800



161



164



165



166

161. Aristocrat Nuts Hot Buttered Nuts Dispenser. Circa 1950. Porcelain Container with "Hot Buttered Nuts" lettered around the rim. Chrome plated with an "Aristocrat Nuts" flag in the middle. With scooper. No glass in front. These containers were placed in confection stores, drug stores, or any other place where candy was sold. Electrical component not tested. Very good. 100/200

162. Northwestern Corp. 5 Cent New Old Stock Model 60 Hot Nut Vendor and Stand. Morris, Ill., ca. 1959. Glass globe embossed with manufacturer's name and city. Original lock and key, decals and directions retained loosely. Electric heating unit (not tested). Mechanics working. On a red stand. Near mint. 250/450

163. Exhibit Supply 10 Cent Pin Up Girl Card Dispenser. Chicago: Exhibit Supply Co., ca. 1940. Machine dispenses pin up girlie cards. Primarily used in amusement parks. Several hundred cards included. 23 x 10". Working. Original lock and key. 400/600



162



163

164. Exhibit Supply Co. 5 Cent Card Vendor. Chicago, 1950s. Dispenses cards with photos of beautiful, scantily clad women for five cents. Expertly restored. Lock and keys. 9 1/2 x 7 1/2 x 11". Slight chips to paint. Working. Very good. 250/350

165. Famous Film Fights Card Vending Machine. Chicago: Exhibit Supply Co., ca. 1927. One-cent machine vends cards depicting "prize fights, battle royals, mob fights, all action." 9 x 7 3/4 x 11". Lock and key. Finish worn. Working. 200/300

166. L.A. Penn 5 Cent "Sun" Confection Vendor. West Los Angeles, ca. 1930. Aluminum body, base and lid. "5 Cent Sun" embossed on lid. Lock, no key. Not working. 100/200



167



168



169



170



171



172



173

167. Oak Mfg. Co. 5 Cent Trading Post Bulk and Stamp Vendor. Los Angeles, ca. 1950. Aluminum base and lid. Likely repainted. Machine vends a stamp as well as bulk merchandise. Stamps probably redeemable for merchandise. Original lock and key. Working. Very good.

100/200

168. ESCO 5 Cent Merchandiser. Chicago: Exhibit Supply Co., ca. 1930. Gambling gumball machine. 11 x 11 x 18 1/2". Likely repainted. Graphics on marquee and ESCO decals recreations. Lock and key. Working.

400/600

169. Northwestern Corp. 1 Cent Model 33 Gum Ball Vendor. Morris, Ill., ca. 1933. Cast iron red porcelain base and lid. Globe with pebbled glass penants around top and "Northwestern" embossed logo. Two locks and keys. Base plate. Filled with gumballs. Not working.

200/400

170. Northwestern Corp. 1 Cent Model 33 Candy Vendor. Morris, Ill., ca. 1933. Cast iron red porcelain base and lid. Globe has pebbled glass pennants around the top and "Northwestern" embossed logo. Two locks and one key. Base plate. Filled with candy. Working.

200/400

171. Northwestern 1 Cent Model 33 Gum Ball Vendor. Morris, Ill., ca. 1933. Black porcelain base and lid. Small lock but no key on lid. Lock and key on base. No base plate. Working.

200/400

172. Northwestern Corp. 1 Cent Model 33 Candy Vendor. Morris, Ill., ca. 1933. Black and red cast iron base and black cast iron lid. Two locks and keys. Lid on candy shoot loose. Base plate. Not working.

200/400

173. Northwestern Corp. 1 Cent Model 39 Ball Gum Vendor. Morris, Ill., ca. 1939. Cast iron with yellow porcelain base and lid. Some chipping on base. Base plate. Lock and key. Working.

200/400



179



174



175



176



177

174. Northwestern Model 60 Gumball Machine. Morris, Ill.: Northwestern, ca. 1965. Decals bright and intact. On cast iron stand. 26" high. Key. Working.

80/150

175. Ohio Vending 1 Cent Model 1 Confection Vendor. American, ca. 1930. Aluminum base and lid. Lock and key. Working.

200/400

176. Select-O-Vend 1 Cent Candy & Gum Vendor. American, ca. 1940. Eight column vendor for candy and gum. 15 x 7". Original lock, no key. Working.

200/400

177. Silver King Peanut Machine. 1940s. Penny machine. Aluminum. Minor paint wear. 7 x 6 x 14". Lock and key. Working.

80/150

178. Floor-Model Peanut Roaster. Cincinnati: Kingery Manufacturing Co., ca. 1916. Handsome floor model peanut roaster. Red and black finish. Including copper hopper and painted lettering. 26 x 38 x 51". One glass panel cracked, else very good.

500/1,000

179. Stollwerck Cocoa Chewing Gum Double Vendor. 1890s. Double-column vendor with eight coin slots, dispensing gum in various flavors. Working. Height 48".

4,000/6,000



178



180



181



183

180. **Victor Baseball One Cent Gumball Pinball Machine.** Put a penny in machine, turn handle and gumball vends to playfield. Pull lever and attempt to hit a homerun. 18 x 9 x 21".

400/600

181. **Victor Acorn One Cent Vendor.** New old stock. Height 16".

150/250

182. **Victor 5 Cent Baby Grand Ball Gum Vendor.** Chicago, ca. 1950. Oak case. Lock and key. Working. Together with a contemporary vending machine by Leaf (ca. 2017), lock, no key.

50/100

183. **Zeno 1 Cent Wood Gum Machine with Clock Work Mechanism.** Chicago, ca. 1905. Advertising on front, inside back door has a "special notice" and directions. Missing metal coin entry and embossed tin on front repainted. Lock and keys, including a key for winding clockwork mechanism. 16 1/2 x 8". Not working.

400/600

184. **Groetchen Tool & Mfg. Co. Klix 1 Cent Black Jack Machine and Ball Gum Vendor.** Chicago, ca. 1940. Original paint and original locks and keys to both side and back door. 8 x 7 1/4". Working.

400/600

185. **New Era 1 or 5 Cent Dice Machine and Ball Gum Vendor.** American: New Era Mfg. Co., ca. 1935. Win cigarettes if a certain combination of numbers is shaken, always receive a gumball. Original paint. Lock, no key. Possibly battery operated to shake the dice. 13 1/2 x 8". Coin slide jammed.

400/600



182



184



185



186

186. **Lot of Three Groetchen 1 Cent Imp Ball Gum Vendors.** Chicago, ca. 1940. These small machines dispensed a ball gum for every penny; two have cigarette reel strips. All with original lock and key. Two missing metal award cards. 6 x 4 1/2". Working.

400/600

187. **Two Groetchen Ball Gum Vendors.** Comprising: (1) 5 Cent "Zephyr" with slot machine reel strips, original award card and paint as well as original lock and key. 10 x 9". Working. (2) 1 Cent "Wings" with cigarette reel strips. Win up to 10 packs of cigarettes for a penny. Original lock and key. 7 1/2 x 6 1/2". Working.

400/600

188. **Lucky Pack 1 Cent Ball Gum Vendor.** Paul Bennett & Co., ca. 1938. Win up to five packs of cigarettes but always receive a gum ball. 13 x 9". Lock and key. Several cracks in the wood, but overall excellent. Working.

200/400

189. **Buckley Cent-A-Pack 1 Cent Ball Gum Vendor.** Chicago, ca. 1935. Play a penny for a chance to win five packs of cigarettes. Always receive a gumball. Original lock and key. 12 x 9 1/4". Working.

400/600

190. **Keeney & Sons 1 Cent Gum Vendor.** Chicago, 1935. The cabinet style and position of the handle and gumball cup is exactly like several Keeney machines. Line up the colored circles and get a gumball. Lock and key. 14 1/2 x 12 3/4". Very good. Working. Rare.

200/400

191. **Gum-a-Mib 1 Cent Gumball Machine.** Milwaukee, 1942. Load a penny into the machine and win gumball and possibly a marble (mib). 16 1/2 x 17 x 7". Working, includes keys. Slight soiling, repainted. Very good.

200/300



187



188



189



190

191



192



193



194



199



201



200



195



196



197



198

192. **Advance Machine Company 1 Cent Gumball Vendor.** Chicago, ca. 1936. Cast iron base and steel lid. Unusual globe. Amco lock and key. Not working. Nice decal. Original paint. Excellent.

600/800

193. **Guaranteed Products Co. 1 Three Column Mint Vendor.** Los Angeles, ca. 1935. Chrome plated sheet metal with three glass domes and embossed coin entry. Height 18". Lock and key. Working. Some wear to plating.

400/600

194. **Regal Products 1 Cent Countertop Gumball Machine.** Madison, Wisc., ca. 1930s. Cast iron base with orange and black crackle finish. Height 12". Lock and key. Very good.

100/200

195. **Ford Vending Machine Corp. 1 Cent Gumball Vendor with Original Script Globe.** East Aurora, N.Y., ca. 1919. Serial #18202. Pressed steel base. Red paint well worn. Original Ford script globe. Lock and key. Working. Good.

200/300

196. **Columbus Vending Co. 1 Cent Model 46 Gumball Vendor.** Columbus, ca. 1946. Buffed aluminum base and sheet metal top. Embossed globe. Lacks key, modern padlocks. Working. Very good.

150/250

197. **Penny King System 5 Cent Play Ball Baseball Gumball Vendor.** Circa 1930. Aluminum base. Appears to be a gambling machine as the decal advertises "Cleen Drill Ball Gum." There is probably a tiny slip of paper in the drilled hole and the cash payouts are on the partial decal that is legible. Original lock, no key. Working. Very good.

200/300

198. **National Mfg. Co. 1 Cent Magna Gumball Vendor.** Circa 1934. Aluminum base and lid. Repainted. Lock and key. Working. Very good.

200/300

199. **Vendex Co. 1 Cent Gumball Vendor.** Boston, ca. 1935. Cast iron base. Vendex also made machines to which Penny King Chewing Gum and Flatbush Gum Co. added their decals. Lacks key. Working. Excellent.

100/200

200. **Automatic Sales Co. 1 Cent Pepsin Tab Gum Vendor.** Lansing, Mich., ca. 1903. Wood top and base with glass sides. Wire sign holder on top. Clockwork mechanism works perfectly. No lock or key, as issued. Excellent. Scarce.

5,000/7,000

201. **Cigarette Vending Machine.** English, ca. 1920. Wooden cabinet with two coin entries and drawers. Packs are dispensed when coins are inserted. Lock and key. Working.

100/200

202. **Handy Pocket Combs 10 Cent Dispenser.** American, ca. 1950. Porcelain over tin. Original lock, no key. 14 1/2 x 9". Working. Excellent.

200/400

203. **Modess Sanitary Napkin 10 Cent Dispenser.** Rochester Germacide Company, ca. 1945. Original lock, no key. 30 x 9". Working.

50/100

204. **"Test Your I.Q." and "Madam X" 1 Cent Napkin Dispenser** American: F.E. Erickson & Co., ca. 1950. Double sided with IQ test cards on one side and fortune-telling cards on the other. A hundred original cards on each side. Original lock and key. 8 x 7 1/2". Working.

300/500



202



203



204



206



205



210



211



213



207



208



209



212



214

205. "Ask Swami" 1 Cent Napkin Dispenser. Los Angeles: Shipman Mfg. Co., ca. 1950. Insert penny and receive a card with your fortune. Small stack of original cards inside. Original lock and key. 8 1/2 x 7". Working.

200/400

206. Perfume and Napkin 25 Cent Dispenser. American, ca. 1950. Four small vials of perfume (not included) for 25 cents in addition to napkins on either side. 11 1/2 x 8". Lock and key. Slight damage to plastic sign on top, otherwise very good.

150/300

207. National Stamp Machine Sales Co. "4-Five Cent Stamps for a Quarter." Springfield, N.J., ca. 1960. 8 x 7 1/4".

100/200

208. Eastern Electric Inc. 5, 10, or 25 Cent Cigarette Vending Machine. American: Eastern Electric Inc., ca. 1960. Metal cabinet. Dispenses packs of cigarettes for a nickel, dime, or quarter. Lock and key. Not tested.

100/200

209. Lehigh Foundries 15 Cent "Out of this World" Cigarette Vending Machine. Easton, Penn.: Lehigh Foundries, ca. 1940. Metal cabinet in Art Deco design. Repainted. 61 x 46". Not tested.

2,000/3,000

210. Silver Comet Cigarette 1 Cent Vending Machine. La Crosse, Wisc.: Redco Products Corp., ca. 1940. Receive one cigarette for a penny. Original lock and key. 8 x 6". Possibly repainted. Working.

200/400

211. Silver Comet 1 Cent Cigarette Vending Machine. La Crosse, Wisc.: Redco Products Corp., ca. 1940. Receive one cigarette for a penny. Original lock, no key. 8 x 6". Appears to have been repainted. Coin shoot jammed.

200/400

212. Antique Ferris Wheel Cigar Trade Stimulator. 1890s. Wooden coin-operated trade stimulator. Drop a coin at top, the wheel spins around and shows the number of cigars the player wins. Advertisement for Albert Pick & Co. (Chicago) lettered to inside panel. Height 21 3/4". With key.

1,000/1,500

213. Caille Bros. Banker 5 Cent Trade Stimulator. Detroit: Caille Bros., ca. 1906. Handsome oak cabinet with ornate castings and original mechanism and playing card reels. Win a cigar or trade after each spin. 22 1/2 x 12 1/2 x 9". Marquee and award card likely replacements.

1,500/2,500

214. Tire-Vite Gambling Trade Stimulator. French, ca. 1935. Wall-mounted trade stimulator, possibly for use in car dealerships or auto repair shops. Moving arm sweeps small balls into chute to award prize. 9 x 8 x 14". Lock and key. Not tested. Unusual.

300/500



215



217



219



220



221



222



216

215. **Adams Five Star Trade Stimulator.** Adams, ca. 1915. Wooden cabinet with cast metal and glass parts. 14 x 9 x 24". Lock and two keys. Paint worn. Working.

500/750

216. **Wizard Clock 5 Cent Trade Stimulator.** Loheide Manufacturing, ca. 1910. Deposit a nickel for a chance to win cigars or three tokens each worth five cents. 14 1/2 x 6 x 11". Marquee and paper replaced, else very good.

300/500

Loheide reportedly repurposed clocks manufactured by Waterbury into these innocent-looking trade stimulators which were popular in cigar and candy shops.

217. **Lite-A-Pax 25 Cent Trade Stimulator.** Chicago: Bally, ca. 1938. Each play lights a combination of four packs of cigarettes, corresponding to a payout on the award card. 19 x 11". Working.

300/500

218. **Bajazzo the Clown Slot Machine/Trade Stimulator.** Northern Automatic Machine Co., ca. 1915. Oak cabinet with plush playfield accented by brass decorations. Paper appears original. 18 x 6 x 24". Working. No Key.

1,500/2,000

219. **Advance Match Machine Dispenser.** 1916. Original, working condition.

1,200/1,800

220. **Safety Match 1 Cent Match Dispenser.** Four-column vendor dispensing one box of matches per penny. Working, with key.

500/750

221. **Diamond Match Co. Two Books for 1 Cent Match Dispenser.** American, ca. 1920. Dispenses two books of matches for a penny. Several match books included. Small lock (not original), no key. Working. 13 1/2 x 10 1/2". Slight pitting on base. Minor decal loss otherwise very good.

400/600

222. **Diamond Match Co. Two Books for 1 Cent Match Dispenser.** American, ca. 1920. Dispenses two books of matches for a penny. Working. 13 1/2 x 10 1/2". Slight pitting on base. Some decal loss otherwise very good.

200/400

223. **N. Tufts 5 Cent Coin Operated Gas Meter.** Boston, 1946. Coin operated machine that dispenses gas. Nice decal on front with directions and caution instructions. Lock appears original, no key. Not tested. Paint worn, otherwise good.

50/100

224. **Lot of Miscellaneous Vending Items, Mainly for Food.** Including Ringling Brothers bags for nuts and popcorn, various cards for card vending machines, matchbooks, Nathan's Hot Dog and Cook's hot dog vendor hats, special ride and picnic tickets for Meyers Lake Park, several thousand popcorn and peanut bags, and more.

50/100



223



224



218



225



226



227



234



235



236



228



229



230



231



232



233

JUKEBOXES

225. **AMI 1959 Model JEJ-200 Stereophonic Jukebox.** Chicago, 1959. Two hundred 45 RPM record selections. One play for two nickels or a dime, three plays for a quarter and seven plays for fifty cents. Locks, no keys.
800/1,200

226. **AMI 1940 Model 201 "Singing Towers" Jukebox.** Chicago, 1940. Plays ten 78 RPM records (20 selections). One play for a nickel, two for a dime and three for a quarter. Locks, but no keys. 70 x 34". Machine appears to be in restored condition or very good original. Lower left corner glass cracked.
4,000/6,000

227. **AMI 1948 Model B Jukebox.** Chicago, 1948. Plays twenty 78RPM records (40 selections). Lock and key. 66 x 31". Plastics not cracked.
1,000/1,500

228. **AMI 1959 JAJ200 100 Selection Jukebox.** Chicago, 1959. Plays one hundred 45 RPM records. No key. 59 x 33".
400/800

229. **AMI 1950 Model C 40 Selection Jukebox.** Chicago, 1950. One play for a nickel, two plays for a dime and five plays for a quarter. Plays twenty 78 RPM records. No lock or key. 66 x 31".
600/900

230. **Mills 1928 "Hi-Boy" Model 801 Jukebox (Five Cent).** Chicago, ca. 1928. Twelve 78 RPM record selections. Walnut cabinet. Lock and key.
4,000/6,000

231. **Mills 1928 "Hi-Boy" Model 802 Jukebox (Five Cent).** Chicago, ca. 1928. Twelve 78 RPM record selections. Walnut cabinet. No lock or key.
4,000/6,000

232. **Mills 1940 "Empress" Jukebox.** Chicago, 1940. Twenty selections of 78 RPM records. One play for a nickel, two plays for a dime and five plays for a quarter. No lock or key. Plastics are good. Handsome machine.
1,000/2,000

233. **Mills 1930s "Studio" Jukebox.** Chicago, ca. 1930. Twelve 78 RPM record selections. Beautiful walnut Art Deco style case. Five cents for one play, ten cents for two plays and a quarter for five plays. 63 x 40". No lock or key.
2,000/4,000

234. **Rock-Ola 1950 Model 1432 Jukebox.** Chicago, 1950. Fifty 78 RPM records. One play a nickel, two plays a dime, special six plays a quarter. No lock or key. Bottom back door missing.
800/1,200

235. **Rock-Ola 1951 Model 1434 Jukebox.** Chicago, 1951. Fifty 78 RPM records. 58 x 30". No back door. No lock or keys. Very good.
400/800

236. **Rock-Ola 1958 Model 1458 Jukebox (25 Cent).** Chicago: Rock-Ola Mfg. Co., 1958. Plays 120 45 RPM records. 55 x 30".
400/800



237



238



239



243



244



245



240



241



242



246



247



248

237. Rock-Ola 1958 Model 1464 "Music Vendor" 120 Selection Play Jukebox (25 Cent). Chicago, 1958. Plays 120 45 RPM records. 39 x 30". No key.

1,000/2,000

238. Rock-Ola 1958 Model 1464 "Music Vendor" 120 Selection Play Jukebox (25 Cent). Chicago, 1958. Plays 120 45 RPM records. 39 x 30". No key.

1,000/2,000

239. Rock-Ola 1940 Model DE-20 Deluxe Jukebox. Chicago, 1940. Plays twenty 78 records. One play for a nickel, two for a dime and five for a quarter. No lock or keys. 56 x 36". Plastics good. Needs restoration.

200/400

240. Seeburg 1920s Audiophone Jukebox. Eight-Selection 78 RPM Records (5 Cent). Chicago, ca. 1928. Lock and key. Appears in excellent condition. Some internal parts removed for transportation.

1,000/2,000

241. Seeburg 1957 Model L-100 Jukebox (25 Cent). Chicago, 1957. One hundred 45 RPM selections. Includes many 1950s records. No lock or keys. 53 x 30". Very good cosmetically.

1,000/1,500

242. Seeburg 1953 Model HF100G Jukebox. Chicago, 1953. One hundred 45 RPM selections. One play for ten cents. Lock, no key.

500/1,000

243. Seeburg 1954 Model HF100R Jukebox (10/25 Cent). Chicago, 1954. One hundred 45 RPM record selections. No lock or key. Two lower back panels missing.

500/1,000

244. Seeburg 1956 Model 100-JL Jukebox (25 Cent). Chicago, 1956. One hundred 45 RPM record selections. Many 1950s records included. No lock or keys. 59 x 35".

800/1,000

245. Seeburg 1955 Model 100J Jukebox (5/10/25 Cents). Chicago, 1955. One hundred 45 RPM record selections. Lock and key. 59 x 35".

800/1,000

246. Seeburg 1955 Model 100J Jukebox. Chicago, 1955. One hundred 45 RPM record selections. One play for a nickel, two plays for a dime and six plays for a quarter. Lock, no key. 59 x 35". Metal pitted and rusty.

300/500

247. Seeburg 1953 Model 100W Jukebox. Chicago, 1953. One hundred 45 RPM record selections. No lock or key. Broken left plastic.

500/1,000

248. Seeburg 1951 Model M100BL Jukebox (25 Cent). Chicago, 1951. One hundred 45 RPM record selections. No lock or key. 53 1/2 x 34". Needs restoration.

100/200



249



250



251



251A



252



253

249. **Seeburg 1951 Model M100BL Jukebox (25 Cent).** Chicago, 1951. One hundred 45 RPM record selections. No lock or key. 53 1/2 x 34". No back door.

100/200

250. **Seeburg 1958 Model 161 Jukebox.** Chicago, 1958. 160 selections of 45 RPM records. One play for a dime, four for a quarter, nine for a half dollar. No lock or key. 56 x 29 1/2".

500/1,000

251. **Seeburg 1952 Model M100C Jukebox (25 Cent).** Chicago, 1952. One hundred selections 45 RPM records. No lock or key. 54 x 35". Plastics not cracked.

400/600

251A. **Seeburg 1952 Model M100C Jukebox (25 Cent).** Chicago, 1952. One hundred selections 45 RPM records. No lock or key. 54 x 35". Plastics not cracked.

400/600

252. **Seeburg 1952 Model M100C Jukebox.** Chicago, 1952. One hundred selections 45 RPM records. One play for a nickel, two plays for a dime and five plays for a quarter. No lock or key. 54 x 35". Plastics cracked and metal pitted.

200/400

253. **Seeburg 1958 Stereophonic Model 222 Jukebox.** Chicago, ca. 1958. Selection of 160 45 RPM records. Ten cents for one play, a quarter for four plays and fifty cents for nine plays. Lock, no key. Full of records.

1,000/2,000



254

254. **Seeburg 1958 Stereophonic Model 222 Jukebox.** Chicago, ca. 1958. Selection of 160 45 RPM records. Two nickels one play, ten cents one play, a quarter two plays. No cash box door. Lock, no key.

500/1,000

255. **J.P. Seeburg Advertising Piano Bank.** Chicago, ca. 1930s. Cast aluminum still bank in the form of a nickelodeon piano, with lock and key. 6 1/2 x 6". Very good.

50/100

256. **Victor Talking Machine Co. VE 9-55 Cabinet Style Combination Phonograph and Radio.** Camden, N.J.: Victor Talking Machine Co., ca. 1927. Gorgeous walnut cabinet with Victor's top of the line record changer on the left side and a premium RCA Radiola 28 radio on the right. 49 1/2 x 49". Damaged wood in several places. Not tested. Rare.

4,000/6,000

In 1925, Victor Talking Machine Co. and Radio Corporation of America (RCA) held a meeting and decided on a joint venture. The result was a short production run of 2,039 Model VE 9-55 jukeboxes, which retailed for the outstanding sum of \$1,550. In 1927, Victor and RCA merged.

257. **Victor Talking Machine Co. Model VE10-50U Cabinet-Style Phonograph.** Camden, N.J.: Victor Talking Machine Co., ca. 1927. Phonograph housed in a beautiful walnut cabinet. The VE 10-50U was a revolutionary phonograph introduced early in 1927. This was the first fully automatic record changer that Victor produced, and allowed the user to play up to 12 records automatically without the need to manually intervene. Only 685 units of the "U" version were made, which runs on AC/DC power. Only two are currently known to have survived in collections, museums, or archives.

2,000/4,000

258. **American Gramophone Co. / Columbia Phonograph Co. Cylinder Player.** New York, ca. 1900s. Key-wind wax cylinder player, manufacturer's engraved plaque, detaching horn, oak base. Overall 11 1/2 x 7 x 13". Not working.

200/300



255



256



257



258



260



261



262



264



265



259

259. **Swiss Cylinder Music Box With Mother of Pearl Inlay on Lid and Bone Key Hole Entry.** Switzerland, ca. 1890. Lovely burl wood veneered case with mother of pearl inlay on lid and bone inlay around the key hole. Cylinder plays six tunes listed on inside of lid. Case measures 27 x 12" and the cylinder measures 15". Could not see any broken teeth. Several minor pieces of wood missing and small patch of veneer pulling up. **1,000/1,500**

260. **Wurlitzer 1935 Model P-12 "Simplex" Jukebox.** North Tonawanda, New York: Wurlitzer Automatic Phonograph Co., 1935. Twelve selection 78 RPM records. One play for a nickel, two plays for a dime. No back door. No lock or key. **800/1,200**

261. **Wurlitzer 1935 Model P-12 "Simplex" Jukebox.** North Tonawanda, New York: Wurlitzer Automatic Phonograph Co., 1935. Twelve selection 78 RPM records. One play for a nickel, two plays for a dime. Back door. Lock, no key. **800/1,200**

262. **Wurlitzer 1945 Model 1100 Jukebox (5/10/25 Cent).** North Tonawanda, New York: Wurlitzer Automatic Phonograph Co., 1945. Twenty-four selection 78 RPM records. Paul Fuller designed. Lock, no key. Needs restoration. **3,000/4,000**

263. **Wurlitzer 1945 Model 1100 Jukebox (5/10/25 Cent).** North Tonawanda, New York: Wurlitzer Automatic Phonograph Co., 1945. Twenty-four selection 78 RPM records. Paul Fuller designed. Lock, no key. Needs restoration. **3,000/4,000**



263

264. **Wurlitzer 1945 Model 1015 "Bubbler" Jukebox (5/10/25 Cent).** North Tonawanda, New York: Wurlitzer Automatic Phonograph Co., 1945. Twenty-four selection 78 RPM records. Paul Fuller designed; the most popular of all the Wurlitzer jukeboxes. Called the "bubbler" because of the bubble tubes under the plastics that surrounded the door. Lock and key. Machine is very clean cosmetically. **5,000/7,000**

265. **Wurlitzer 1958 Model 2200 Jukebox.** North Tonawanda, New York: Wurlitzer Automatic Phonograph Co., 1958. 104 selections 45 RPM records. One play for a dime, four plays for a quarter and nine plays for fifty cents. Lock, no key. **500/1,000**

266. **Wurlitzer 1958 Model 2204 Jukebox.** North Tonawanda, New York: Wurlitzer Automatic Phonograph Co., 1958. Two hundred selections 45 RPM records. One play for a dime, three plays for a nickel and seven plays for fifty cents. Broken side glass. No lock or key. **500/1,000**

267. **Wurlitzer 4008 Electric Light Wall Mount Speaker.** California: Thomas Cantrella, ca. 1995 (?). Mirrored tiles and light up plastics. 33 x 18". Very good. **2,000/3,000**



266



267



268-286 Individual photos of lots 268-286 found online



287



294

268–286. 3WA-200 Remote Wall Box. Chicago, ca. 1957. Two hundred selections. Some units include key and lock, others lacking one or both, otherwise in similar condition. Not tested. Nineteen units; one unit per lot. Individually photographed with condition remarks online.

100/200

287. Seeburg 3WA-160 Remote Wall Box. Chicago, 1955. 160 selections. Lock and key. Not tested.

100/200

288. Seeburg 3W1-100 Remote Wall Box. Chicago, 1948-1954. 100 selections. Lock, no key. Not tested.

100/200

289. Seeburg 3W1-100 Remote Wall Box. Chicago, 1948-1954. 100 selections. No lock or key. Not tested.

100/200

290. Seeburg 3W1-100 Remote Wall Box. Chicago, 1948-1954. 100 selections. No lock or key. Not tested.

100/200

291. Seeburg 3W1-100 Remote Wall Box. Chicago, 1948-1954. 100 selections. Lock and key. Not tested.

100/200

292. Seeburg 3W-1 Remote Wall Box. Chicago: J.P. Seeburg & Co., ca. 1955. Number of selections not on glass. No lock or key. Not tested.

100/200

293. Seeburg 3W-1 Remote Wall Box. Chicago: J.P. Seeburg & Co., ca. 1955. Number of selections not on glass. Lock and key. Not tested.

100/200

294. Crosley Musik Wurks Ballroom Dancers CR310 Music Box. New in box with power adapter and discs.

100/200



288



289



290



291



292



293

PINBALL & VIDEO ARCADE

FEATURING PROPERTY FROM THE COLLECTION OF STEVEN TONDRE



Steven Tondre (1947—2018), a U.S. Army veteran, proudly served his country in the Vietnam War. Educated and trained as an electrical engineer, he had an uncanny knack for fixing almost anything, and became the quintessential jack of all trades. As a result, Steven began acquiring machines, and over the course of over 40 years accumulated an extensive collection of pinball and video games, slot machines, and jukeboxes. A portion of his collection is offered in this auction.

Steven was also a World Champion West Coast swing dancer, winning numerous competitions and awards. His collecting interests included motorcycles, classic cars, musical instruments, gems, and coins. Steven also had an ear for music and was a self-taught musician, performer, and DJ. A multi-instrumentalist, he played guitar, piano, drums, and organ as the leader of his band, The Vindicators, which specialized in the sounds of the Sixties.



Lot 299



296



297



300



298



299

295. No Lot.

296. **Big Broadcast 5 Cent Wood Rail Pinball Machine.** Chicago: D. Gottlieb & Company, ca. 1933. Ten balls for a nickel. Original wood legs, lock and key. Playfield excellent.
1,000/1,500

297. **Rol-A-Ball 1 Cent Pinball Machine.** 1940s.
400/600

298. **Williams Doodle Bug Pinball Machine.** Chicago: Williams, 1971. Two nickels or a dime for one play, quarter for three plays. Lock and key. Not working.
400/600

299. **Bally Monte Carlo Pinball Machine.** Chicago: Bally Mfg. Co., 1973. Ten cents for one play and a quarter for three plays. Four-player version. Lock and key. Working. Some cosmetic wear and chipping to edges.
400/800

300. **Bally The Pennant 5 Cent Wood Rail Pinball Machine.** Chicago: Bally Mfg. Co., ca. 1933. Original wood legs, lock, no key. Playfield is excellent.
1,000/1,500



301



302



306



303



304



305

301. **Williams Hyperball 25 Cent Pinball Machine.** Chicago: Williams Mfg. Co., 1981. From the run of 5,000 units. Back glass and playfield excellent. Lock and key. Working (not all scoreboard lights turn on).
600/800

302. **Bally Fireball 25 Cent Pinball Machine.** Chicago: Bally Mfg. Co., 1972. Lock and key. Back glass and playfield very good. Some rust. Not working.
400/600

303. **Bally Space Invaders 25 Cent Pinball Machine.** Chicago: Bally Mfg. Co., 1980. Lock and key. Back glass and playfield excellent. Not working.
1,000/1,500

304. **Flying Carpet 25 Cent Pinball Machine.** Chicago: Gottlieb Mfg. Co., 1972. Lock and key. Back glass and playfield excellent. Powers on, ball launcher not fully functional. Some paint losses.
500/1,000

305. **Bally Bow & Arrow 25 Cent Pinball Machine.** Chicago: Bally Mfg. Co., 1974. Lock and key. Back glass and playfield excellent. Working (one ball lodged under glass and playfield).
500/1,000

306. **Asteroids 25 Cent Upright Video Game.** Atari, 1979. Lock and key. Not working. Soiling and wear to control panel.
400/600



307



310



311



312



313



314



315



308



309



316



317



318

307. **Astro Blaster Upright Video Game.** Gremlin/Sega, 1981. No key. Powers on with audio, however gameplay was inaccessible at time of testing.

200/400

308. **Baseball 25 Cent Cocktail Table Video Game.** Atari, 1979. No key. Working, but one trackball non-functional. Uncommon.

400/600

309. **Batman/Galaga/Galaxian Small Video Game.** Atari, 1978 [?]. Wood cabinet. 21 x 16 1/2". Working. While the main screen advertises the game as "Batman," gameplay resembles Galaga or Galaxian.

400/600

310. **Battlezone 25 Cent Upright Video Game.** Atari, 1980. Lock and key. Working. Video on request.

600/800

311. **Carnival 25 Cent Upright Video Game.** Gremlin/Sega, 1980. Lock and key. Working. Repairs and repainting to cabinet.

400/600

312. **Crazy Climber 25 Cent Upright Video Game.** Nichibutsu, 1980. Lock and key. Working.

1,600/2,200

313. **Crazy Kong Part II 25 Cent Upright Video Game.** Falcon, 1981. Lock and keys. Working.

400/800

314. **Football 25 Cent Cocktail Table Video Game.** Atari, 1978. Lock and key. Working.

400/800

315. **Frogger 25 Cent Upright Video Game.** Sega, 1981. Lock and keys. Not tested.

400/600

316. **Frogs 25 Cent Upright Video Game.** Gremlin, 1978. No key. Working, but with displaced inner glass reflection screen presently hindering gameplay.

400/600

317. **Gorf 25 Cent Upright Video Game.** Midway, 1981. Lock and keys. Marquee and screen power on, however no menu appears; will require restoration.

600/1,200

318. **Gun Fight 25 Cent Upright Video Game.** Midway/Taito, 1975. Lock and key. Powers on, but not playable.

200/300



319



320



321



325



327



326



322



323



324



328



329

319. Stern Krazy Kong 25 Cent Upright Video Game. 1980s. No key. Powers on, but not playable.

400/800

320. Lunar Lander 25 Cent Upright Video Game. Atari, 1979. Lock and key. Working. A few chips to T-molding.

800/1,200

321. Marble Madness 25 Cent Upright Video Game. Atari, 1984. No key. Powers on, but not playable.

600/800

322. Missile Command 25 Cent Upright Video Game. Atari, 1980. Lock and key. Working.

400/600

323. Monte Carlo 25 Cent Cocktail Table Video Game. Played like blackjack. No lock or key. Powers on.

100/300

324. Stern Mr. Do 25 Cent Upright Video Game. Lock and key. Not tested.

400/600

325. Rally X 25 Cent Upright Video Game. Midway, 1980. Lock and key. Powers on, but not playable ("ROM OK" message flashing at start-up).

400/600

326. Space Stranger 25 Cent Cocktail Table. Yachiyo, 1978. Lock and key. Not working.

100/300

327. Star Castle 25 Cent Upright Video Game. Cinematronics, 1980. Vector graphics. Working, but a bit choppy at start-up.

400/800

328. Pair of Cocktail Tables Video Games. 1980s. Including one Pac-Man table and one Donkey Kong table. No keys. Working, but machines overheated and emitted smoke when tested; sold as is.

50/100

329. Taito Cocktail Table Video Game. Two-player model. Motor works, but no graphics on screen. Not coin operated. Lock and key. Working motor, no graphics appear on screen; for parts or repair.

50/100



330

331

332

333



334



335

330. Tankers 25 Cent Upright Video Game. Fun Games Inc., 1975. Lock and keys. Powers on, but not playable.

400/600

331. Tempest 25 Cent Upright Video Game. Atari, 1981. Lock and keys. Not tested. Working.

600/800

332. Vanguard 25 Cent Upright Video Game. TOSE, SNK (Japan), licensed to Centuri, 1981. Lock and key. Working.

400/600

333. Venture 25 Cent Upright Video Game. Exidy, 1981. No key. Control panel buttons not working.

400/800

334. Lot of 50 Original Mills Novelty Co. Miscellaneous Keys. Chicago, ca. 1930–50s. An assortment.

100/200

335. Carved Walnut Stand. Circa 1890s. Beautiful carved walnut stand with twisted column and hand carved faces. 37 1/2 x 15 3/4". Excellent.

400/600

ADVERTISING



Lot 420



336



337



339



340



338



341



342



343



344



345



346



347

BEER

336. **Arrow 77 Beer Advertising Thermometer.** Baltimore: Globe Brewing Co., 1950s. Printed metal sign with thermometer on right and repeating logos from top to bottom. 27 x 7 1/2". Heavily soiled, with paint and plaster stains, wear to surface. Fair.

150/200

337. **Ballantine Beer Tin Sign.** Newark: P. Ballantine & Sons, 1950s. Small tin sign depicting a sweaty beer bottle. 9 x 3 1/2". Slight edgewear. Near fine.

100/200

338. **Ballantine Lighted Motion Sign.** Newark: P. Ballantine & Sons, 1950s. Illuminated sign for countertop or mounting on register; spinning internal mechanism gives the appearance of rising bubbles. 10 1/2 x 8 1/2 x 3". Lights functioning. Spinning component on right side disconnected and not spinning, left side in working condition, wear to surface. Good.

100/200

339. **Bartels Beer Scoreboard Sign.** Edwardsville, Penn.: The Bartels Brew Co., 1950s. Printed beer advertisement on metal with chalkboard for scoring two baseball games. 10 x 28". Cardboard backing and hang string on verso. Near fine.

150/200

340. **Bavarian's Beer. Two Advertising Pieces.** 1950s. Illuminated three-sided hanging lantern with pictorial plastic shade; die-cut cardboard stand-up sign of a man carrying a stack of sandwiches and a bottle of beer. Lamp 10" tall; sign 20 x 17". Lamp in working condition with minimal wear and soiling to surface; sign bent at top left and plate. Both very good.

150/250

341. **Bavarian's Old Style Beer. Two Advertising Pieces.** Covington, Ky.: Bavarian Brewing Co., 1950s. Cast plaster half-barrel display with metal hanger on verso; plastic lighted sign with beer bottle and the phrase "A Man's Beer" within. Barrel 12 x 7 1/2 x 5"; sign 15 x 16 x 3". Paint loss and chipping on bottom edge of barrel; sign not working, not tested with new bulb. Good.

150/250

342. **Blue Label Beer Bottle Counter Display.** Detroit: Martelle-Lamb, Inc., 1950s. Reverse glass sign in wooden stand with indented space for beer bottle display. 9 x 15 x 3". Empty Northern Pale bottle included. Glue residue where glass fits into wood base. Near fine.

150/250

343. **Buckeye Beer Tin Over Cardboard Sign.** Coshocton, Oh.: American Art Works, Inc., 1950s. Printed metal sign showing an old man and his dog enjoying a beer together. 15 1/2 x 20". Light scuffing to surface.

100/200

344. **Buckeye Beer Tin Sign.** Circa 1950s. Small metal sign advertising Buckeye Beer with two cartoon waiters on either end. 13 1/2 x 2 3/4". Slightly bent, surface looks near mint.

100/200

345. **Burger Beer. Three Copper Advertising Plaques.** New Albany, Ind.: Bruce Fox, 1950s. Trio of hand-worked copper reliefs mounted in plaster with wood frame. 14 1/2 x 11 1/2". Paper backing and maker's label on spaniel plaque, others have facsimile backing and label; each with hanging hardware on verso. Spaniel plaque spotty on bottom of wood, plaque with two dogs has small red stain on dogs ear, else very good group.

250/350

346. **Burger Beer Lighted Boat Sign.** Luna, Oh.: Neon Products Inc., 1960s. Plastic and metal light-up sign with sail boat scene behind a railing festooned with lifesavers. 10 x 34 x 5". Light in working condition. Some scuffs and scratches, minor soiling. Very good.

400/600

347. **Burger Beer Horse Counter Display.** Cincinnati, 1950s. Molded foam base with plastic endcaps on each side and plastic horse mounted to the top. 15 x 15 x 5". Foam soiled with some gouges and chipped areas. Good.

100/150



348



349



350



351



352



353

348. Champagne **Velvet Beer Tin Over Cardboard Sign**. Coshocton, Oh.: American Art Works, Inc., 1950s. Printed metal over cardboard depicting a man fishing with his friends. Painting by Hintermeister. 14 x 19". A few gouges affecting image, scattered scuffing. Good.

150/300

349. Champagne **Velvet Beer Celluloid Button Sign**. Chicago: Parisian Novelty Co., 1950s. Round celluloid sign with metal backing in red, white and maroon. 9 1/2" diam. Metal hanging chain at top. Very little wear to surface. Near fine.

100/150

350. **Eastside Old Tap Waterfall Motion Display**. Chicago: Embosograf Company of Illinois, 1950s. Illuminated spinning light gives the illusion of a flowing waterfall. Plastic and cardboard construction. 12 1/2" tall. In working condition, replacement screws in base. Very good.

400/600

351. **Erin Brew Lighted Sign**. Cincinnati: Advertising Products, Inc., 1950s. Light-up wall hanging advertisement for Erin Brew. 5 x 10 x 3". Working condition. Minimal surface wear. Near fine.

80/150

352. **Falls City Beer. Two Cardboard Advertising Signs**. Louisville: Falls City Brewing Co., 1950s. Pair of cardboard advertisements featuring a man and a woman looking at an anthropomorphized beer bottle. Art by Watkins. 24 x 11" ea. Male ad shows some light soiling on top edge and bottom left corner, other is near fine.

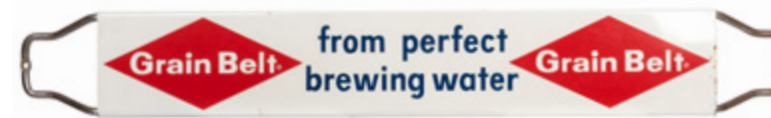
100/200

353. **Fort Pitt Beer Scoreboard Sign**. [Pittsburgh], 1949. Double-sided printed beer sign on metal with chalkboard for scoring baseball games. 11 1/2 x 23 1/2". Some blistering to paint surface, marginal rust and paint chips, scuffs. Good.

150/250



354



356



355



358



357



359

354. **Fox Head and Fox De Luxe. Three Advertising Pieces**. Chicago: Beeco, Inc., 1940s. Pair of reverse glass signs, each featuring metallic foil lettering (Chicago: Beeco, Inc., 1940s) and stand-up hardboard display depicting the stockyards of Chicago. Some chipping around borders on glass; display near fine. Very good.

200/300

355. **Gluek's Stite. Celluloid Button Sign**. Minneapolis: M.J. Kennedy, 1940s. Round sign with gilt highlights. Plastic over metal with hanging chain. 9 1/2" diam. Surface wear, some reside and pitting on top left, otherwise very good.

200/300

356. **Grain Belt. Pair of Advertising Signs**. Circa 1950s. Lighted countertop sign with plastic face and metal housing (Cincinnati, The American Sign Co.) and double-sided door push sign with adjustable mounting hardware (St. Louis, Stout Sign Co.). Light 5 x 10"; sign 30", including hardware. Light in working, very good condition; push sign near fine.

200/250

357. **Hamm's Starry Night Western Prices Lighted Motion Sign**. Circa 1960s. Lighted sign in the form of a lake-side cabin; twinkling stars intermittently spell out "Hamm's" and form beer-glass constellations. Possibly for West Coast market. 19 1/2 x 16 x 5". In working condition. Light surface wear, union labels on verso.

500/700

358. **Iroquois Brewing Co. Electric Lighted Advertising Sign**. Buffalo, N.Y.: The Rotary Co., ca. 1960s. Embossed central copper-tone medallion with the brewery's logo, enameled cast iron lettering, fluorescently lit underneath, the bulb contained in the enameled semi-circle cover with frosted top. Aluminum frame. Lithographed diecut logo to reverse. Height 19". Working.

200/400

359. **Kaier's Draught and Bottles. Celluloid and Tin Over Cardboard Sign**. Reading: Permanent Sign & Display Co., 1950s. A trio of beer bottles and gilt text. 8 1/2 x 16". Hang chain and metal stand on verso. Scattered discoloration and scuffing along edges. Very good.

200/300



360

364



365



367



366



368



361

360. **Knickerbocker Die-Cut Store Display.** Covington, Ky.: Donaldson Art Sign Co., 1955. Printed and embossed tin over cardboard with adhesive strips and stand on verso. 14 ½ x 9". Near fine.

50/100

361. **Knickerbocker Beer Lighted Motion Sign.** Cincinnati: Ohio Advertising Display Co., 1950s. Multicolored spinning disc creates a motion effect around the border of this glass and metal light-up beer sign. 15 ½" diam. Image on face crisp, minor wear to metal surface, cord connection repaired with electric tape, union and manufacturer's labels on verso. Near fine.

400/600

362. **Lucky Lager Backbar Felt Decal.** California, 1950s. Thin felt patch depicting a woman skiing past an alarmed rabbit. In original envelope. 10 ½ x 14". Fine.

100/200

363. **Marathon Old Lager Reverse Glass Sign.** Chicago: Frank-Len Co., 1940s. Small reverse glass sign with cardboard stand-out backing. 4 x 8". Manufacturer's stamp on verso. Shows wear and minor paint loss around edges, else very good.

80/150

364. **Meister Bräu Advertising Thermometer.** American, 1950s. Large printed metal sign with thermometer in center. 35 x 8 ½". Scuffing to surface with some rusting and paint loss, marginal dents. Good.

150/200

365. **Old Style Lager Lighted Glass Sign.** Chicago: Price Brothers, 1950s. Illuminated green and yellow painted glass in metal housing. 16 x 20 ½ x 3". In working condition. Sold with extra pull cord. Minor paint loss to bottom right of green shield, otherwise very good.

600/800

366. **Olympia Beer Painted Wooden Sign.** Olympia, n.d. Vintage wooden sign in fluorescent orange and teal, proclaiming that "It's the Water" that makes Olympia beer unique. 15 ½ x 22 ½". Light scuffing to surface, else near fine.

80/150

367. **Pabst Blue Ribbon Mechanical Moving Car Countertop Advertisement.** Working. Small crack to front plastic. Height 17".

250/450

368. **Pabst Blue Ribbon Bartender On Duty Sign.** Milwaukee: Pabst Brewing Company, 1950s. Wooden countertop sign with metal letters, glass PBR logo and metal stand; area to add nametag of current bartender on duty below the question "What'll you have?" 6 ½ x 10". Small scuffs, very good.

80/150

369. **Pfeiffer's Beer Tin Over Cardboard Sign.** Coshocton, Oh.: American Art Works, Inc., 1950s. Printed metal over cardboard depicting the racehorse Gallant Fox. 14 x 18". Dark specks across image, scattered scuffs, gouge on bottom margin, otherwise very good.

150/200

370. **Plantation Whiskey Advertisement.** Philadelphia: Plantation Distilled Products, Inc., 1950s. Pictorial printed metal sign depicts a tray of cocktails below a painting by John Allen Maxwell. 12 x 10". Cardboard stand and hang chain on verso. Light soiling on bottom corners, else near fine.

100/200

371. **Prager Beer Reverse Glass Sign.** Watervliet, Mich.: Ersman Graphic Arts, 1940s. Small reverse glass sign with cardboard stand-out backing. 6 x 10". Manufacturer's stamp and hanging string on verso. Shows wear and minor paint loss around edges, else very good.

50/100



369



370



371



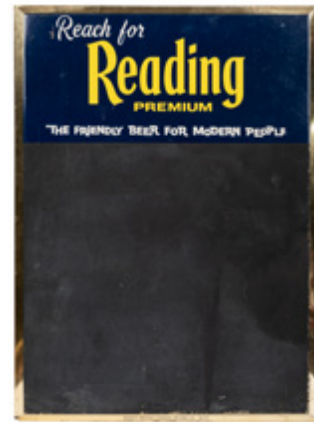
362



363



374



375



372

372. **Primo Beer Sign With a Relief Topography of Hawaii.** Honolulu, 1968. Pressed plastic relief topographical view of the islands (with the warning: "Do Not Use for Navigational Purposes"), plastic frame. 17 x 26". Very good.

80/150



373

373. **Rainier Beer Electric Tavern Sign.** Seattle, ca. 1960s. Metal and plastic hanging sign which lights up with a view of Seattle's city lights at dusk, against Mount Rainier. Working. 34 x 12 x 6".

150/250



376

374. **Rainier Beer Lighted Motion Advertising Sign.** Cincinnati: The Ohio Advertising Display Co., 1950s. Logo on reverse glass in gold-colored metal housing. Illuminated spinning mechanism gives the appearance of movement within the graphic. 27 x 12 x 4". In working condition with minimal wear and scuffs to surface. Very good.

700/900

375. **Reading Premium Beer Chalkboard Sign.** Reading: Permanent Sign and Display Co., 1950s. Advertising "the friendly beer for modern people." Metal with chalkboard surface, backed with cardboard, hang chain on verso. 22 x 16". Scattered wear and scuffing. Very good.

100/200



377

376. **Red Top Beer Tin Sign.** Circa 1940s. Single sided tin sign with bold red text and two spinning tops. 10 x 27 1/2". Marginal chipping, rust and blistering, else very good.

150/250

377. **Red Top Beer Molded Plastic Light and Three Tin Signs.** Cincinnati, ca. 1950s–60s. Including a molded plastic electric sign, with Masonite backing (height 21"); and three identical tin advertising signs (approx. 10 x 27 1/2"), each with slight rust and paint losses to edges.

150/250

378. **Red Top Beer. Trio of Advertising Pieces.** Circa 1940s. Pair of ceramic pipes with plastic mouthpieces bearing the logo of Red Top Beer; cardboard sign with hang string depicting C.M. Coolidge's "Pinched with Four Aces.". Pipes 5" long; sign 13 1/2 x 15". Pipes in unused condition, light soiling on unglazed bowl; sign shows marginal wear and creasing. All very good.

150/250



378

379. **Red Top Beer Embossed Die-Cut Tin Sign.** Cincinnati, 1940s. Printed tin sign in the shape of a red top, for which the beer is named. 21 x 14". Wear to surface with minor paint loss, bottom tip bent slightly. Good.

150/250



379



380

380. **Red Top Beer Metal Flange Sign.** Kenton: Scioto Sign Co., 1940s. Red, white and black double-sided metal sign for the "unusual" Cincinnati beer. 11" diam. Scuffs to surface and scattered rust, especially on flange. Very good.

150/200

381. **Rheingold Beer Tin Over Cardboard Sign.** Covington, Ky.: Donaldson Art Sign Co., 1950s. Depicts aerial view of El Morro, Puerto Rico. Printed metal with cardboard backing. 16 x 17". Minor scuffing on surface, else very good.

80/150



381

382. **Schlitz Half Quarts. Trio of Advertisements.** Milwaukee: Jos. Schlitz Brewing Co., 1956. Pair of identical printed tin signs depicting a couple drinking beer at home; large cardboard store display shows a man returning home with a six-pack. Both display typical mid-century design. Tin 12 1/2 x 16"; cardboard 27 x 21". Tin sign faded with scattered rust marks and water damage on verso, second tin sign in better condition; cardboard has slightly bumped corners, otherwise near fine.

150/250



382

383. **Schlitz Brewing Company. Two Advertising Signs.** Milwaukee: Jos. Schlitz Brewing Co., 1958 and 1963. Plastic light-up Schlitz sign depicting a man painting a decoy; metal countertop calendar with plastic Old Milwaukee logo and moveable calendar feature. Lighted sign 26 x 11 x 4 1/2"; calendar 17 x 11 x 2". Schlitz sign light in working condition; plastic casing broken in several places and does not stay on securely. Calendar shows rust and wear. Good to fair.

150/200



383



384



389



390



392



393



385

384. Schlitz Embossed 3-D Wall Display. Milwaukee: Jos. Schlitz Brewing Co., 1957. A joyful party scene depicted in a multi-layered diorama-type sign. 12 x 16 1/2 x 2 1/2". Scratches and scuffs to surface, otherwise very good.

200/300



386

385. Schlitz "Bless Her Heart" Metal Advertising Sign. Circa 1950s. Lithographed metal sign with cardboard backing. 12 x 24". Light scratches.

150/250

386. Schlitz "Take Home Six-Paks" Electric Sign. Lithographed plastic with internal fluorescent lighting. Working. 10 x 19".

80/150



387

387. Schlitz "Move Up to Quality" Electric Sign. 1958. Hard plastic with internal fluorescent lighting. Original box, instructions. 10 1/2 x 26".

80/150

388. Schmidt's of Philadelphia. Die-Cut Summer Wall Trim. Philadelphia: The Weiller Co., 1950s. Triptych of ads in a mid-century illustrated style; depicts summer pastimes such as BBQ, fishing, swimming and baseball. Includes original hanging instructions from manufacturer. Largest 63 x 20". Hinge on large piece ripped but holding, marginal creases and bumps, dampstains on verso. Very good overall.

100/150



388

389. Schmidt's of Philadelphia. Lighted Advertising Clock. Chicago: Tel-A-Sign Inc., 1950s. Keystone shaped clock with metal body and plastic front cover and clock face. 13 1/2 x 14 x 2 1/2". Sold with original box and mounting brackets. Clock and lights in working condition. Clock face cracked, surface wear, manufacturer's and union labels on verso. Very good.

200/300



391

390. Schoenling Beer Electric Tavern Light. Cincinnati, 1960. Hanging metal light fixture with pictorial frosted glass panels. Original box, paperwork, mounting bracket. Height 18".

80/150

391. Silver Cream Beer. Four Die-Cut Fish Signs. Menominee, Mich.: Menominee-Marquette Brewing Co., 1950s. Group of cardboard signs, each highlighting a different type of fish. 13 x 20". With hanging strings on versos. Wall-Eyed Pike sign has torn top-left corner, all others in fine condition.

200/300

392. Sunshine Premium Beer Chalkboard Sign. Reading, Penn.: Permanent Sign and Display Co., 1950s. Smiling glasses of beer promise "Fun with Lunch"; metal with chalkboard surface, backed with cardboard, hang chain on verso. 24 x 16". Little marginal wear to extremities, otherwise very good.

100/200



394



395

393. Texas Pride Lager Beer Advertising Tray. San Antonio, 1940s. Brightly colored scene with the phrase "You can beat it" along the bottom. 13 1/2 x 11. Soiling and surface wear. Very good.

200/300

394. Vic's Special and Northern Beer. Two Tin Over Cardboard Signs. Kenton: Scioto Sign Co., 1940s. Red sign and blue-green sign, each with debossed gilt text. Hang strings and cardboard stands on versos. 5 1/2 x 11 1/2" and 13 1/2". Few minor chips and scratches, edgewear. Very good.

100/200

395. Wiedemann Beer Reverse Glass Calendar Sign. Chicago: Beeco, 1950s. Glass sign with red foil lettering and logo, with wheels on each side to change the displayed date. 9 1/2 x 11 1/2". Discoloration on white background, some spotting around lettering. Very good.

150/250



396



397



398



400



399



401



402



404



403



405



406



407

SODA POP & SODA FOUNTAIN

402. Soda Fountain Aluminum Ticket Dispenser. Circa 1940. Pay the cashier the amount on the ticket then give the ticket to the "soda jerk" and he will make you what you want for that price. Five rolls of original tickets inside. Small lock and key. 7 ¼ x 6 ¼". Excellent.

200/400

403. Howel's Original Cherry-Julep 5 Cent Syrup Dispenser With Pump. Very nice example of this highly collectable syrup dispenser. Gold pin striping around top and bottom of base. 16" to top of pump. Hairline crack at rear of base otherwise excellent.

1,000/2,000

404. Cherry Julep Soda Fountain Syrup Dispenser. American, ca. 1940. Crockery base with large ribbed glass syrup holder and metal top. Two decals one damaged, one excellent. Original brass spout. 25" high.

400/600

405. Mission Real Fruit Juice Glass Dispenser. American: Mission Dry Corporation, ca. 1950. Pebbled glass dispenser on aluminum base with lid and mixer. 12 ½". Excellent.

300/500

406. Peter's Hot Chocolate Ceramic Dispenser. American, ca. 1945. Large ceramic jar with lid to dispense chocolate for hot chocolate drink. 10 ½". Very good.

100/200

407. Hunt's Ice Cream Double-Sided Flange Sign. 1950s. Original and unrestored. 13 ¾ x 21".

400/600

396. Wiedemann Beer Lighted Display. Chicago: Price Bothers, Inc., 1950s. Glass sign on illuminated metal base, for countertop or top of register. 7 x 14". Light in working condition. Lettering on base crackling, wear to metal finish. Very good.

150/200

397. Wiedemann Fine Beer Lighted Clock. Covington, Ky.: The Countryman Co., Inc., 1960s. Illuminated plastic wall or countertop clock with metal housing in original box. 16 x 11 x 5". In working condition. Minor surface wear and internal soiling on plastic, original hanging and mounting hardware in box. Very good.

150/200

398. Pair of Wiedemann Tin Over Cardboard Signs. Covington, Ky.: The Donaldson Art Sign Co., 1940s. Printed metal with cardboard backing, both with strings for hanging. Each 10 x 20". Scattered soiling and scuffs to surface, both very good overall.

150/200

399. Yusay Beer Lighted Bullet Sign. Chicago: Price Brothers, Inc., 1950s. Illuminated die-cut glass bottle in bullet shaped metal housing on a stand bearing the beer's motto. 16 x 6 ½". In working condition. Marginal paint loss on top right of glass bottle, slight discoloration inside bullet, electrical cord frayed. Very good.

800/1,200

400. Three Reverse Glass Beer Signs. American, 1950s. Includes two from Beeco Inc., Chicago: Bohemian Club Old Fashioned Lager and Ambassador Beer; and one for Havenstein Beer. All with foil details, cardboard backing and pop-out stands. Largest 10 x 7". Minimal wear, a very good group.

150/200

401. Three Blatz and Heineken Store Display Beer Figures. Including a Blatz Barrel man ceramic figure with the text "Blatz on Draft, Milwaukee's finest Beer" (16 x 12"); a Blatz ceramic Ice Skater With original tin sign (18 x 15"), slight damage; and a Heineken hard rubber Dutch boy smoking a pipe (18 x 14 ½"), excellent.

300/500



408



413



415



416



417



409



414



418



411



412



419



420

408. **Orange Crush Embossed Tin Sign.** O-C Company, 1931. Attached to wood. A few bends, but overall condition very good. 27 x 10".

200/400

409. **Carnation Malted Milk Canister.** American, ca. 1940. Milk glass container to hold malted milk powder for making ice cream malts at soda fountains. Spun aluminum top. 9". Excellent.

200/300

410. No lot.

411. **Fowler's Cherry Smash Syrup Dispenser with Lid.** Richmond, Virginia: Fowlers, ca. 1940. Ruby red glass syrup dispenser on chrome base. 15" x 7 1/2".

400/600

412. **Fowler's Cherry Smash Syrup Dispenser with Lid.** Richmond, Virginia: Fowlers, ca. 1940. Ruby red glass syrup dispenser on clay(?) base. Base not original. 12 1/2".

50/100

413. **Hires Root Beer Syrup Dispenser with Original Pump.** Circa 1935. Ceramic syrup dispenser with original pump. 14 1/2" x 10". Large chip in the lip that is covered by the pump. Dent in the pump.

200/400

414. **Hunter's Root Beer Syrup Dispenser.** Circa 1940. Ceramic syrup dispenser with lid. 12 1/4 x 5 1/2". One-inch chip out of lid otherwise excellent.

100/300

415. **Hamilton Beach Soda Fountain/Diner Milk Shake Mixer.** Glen Allen: Hamilton Beach Company: ca. 1940. Green porcelain base. Includes malted milk canister. 18 1/2" x 8 1/4" x 6 1/4". Working. Excellent.

200/400

416. **Success Sugar Cones Case.** American, ca. 1900. Tin case with glass sides holds sixteen waffle cones, advertised at five cents each. Stenciling on all four sides. 14 1/2 x 9 1/2". Very good.

200/400

417. **Rochester Root Beer Etched Glass Dispenser.** American, ca. 1940. Dispenser shaped like a large mug. 12 1/2" x 6". Excellent.

200/400

418. **Spearman Ave. Double-Sided Porcelain Street Sign.** Vintage street sign with openings for mounting to pole. 29 x 6". Slight losses with rust to top edge

200/400

419. **Two Coca-Cola Thermometers.** Bottle-shaped, with strong graphics. The first 29" high, the other 17" high. Both in very good condition.

300/500

420. **Drink Coca-Cola / Sign of Good Taste Calendar.** 1957. Offset lithograph winter-themed calendar. 27 x 16". Tears and creases with some losses to image. Unmounted. B.

80/150



421

422



426

421. **Coca-Cola Advertising Serving Tray.** Coschocton, Oh.: American Art Works, 1937. Lithographed rectangular tray depicting a woman running on a beach, clean and bright image with dirt deposits to lower left. 13 ¼ x 10 ½". Munsey, pg. 146. 100/200

422. **Wrigley Gum Five Sided Green and Black Gum Display Stand.** Chicago: Wrigley Co., ca. 1950. Sits on cast iron swivel base. Gum included but not original. 14.5 x 8". Light surface rust, but overall good. 100/200

423. **Wrigley Gum "Be Sure It's Wrigley's" Display Stand.** Chicago: Wrigley Co., ca. 1930. Arrow man display holds four boxes of Wrigley's gum. 13 ½ x 14 ½". Light surface rust and small crack in celluloid face. Three boxes of gum included (not original). 200/400

424. **Two Embossed Tin Soda Signs.** Comprising: (1) Gra-Rock Ginger Ale embossed tin sign. 27 x 11". Very good. (2) Tower Root Beer embossed tin sign. "Like Mother Used to Make." 19 ½ x 8 ½". Very good. 200/400

425. **7-Up Lighted Motion Advertising Sign.** South Milwaukee: Everbrite Electric Signs, Inc., 1950s. Plastic sign in metal housing with illuminated spinning mechanism inside; gives the appearance of motion within the graphic. 12 ½ x 10 ½ x 4". In working condition with minimal wear and scuffs to surface; manufacturer's and union labels on verso. Very good. 500/700

426. **Canoe Club Beverage Cardboard Sign.** Cincinnati: The Kemper-Thomas Co., 1918. Cardboard sign in red, black and cream with tin frame around border. 14 x 30". Frame bent slightly in a few spots, surface wear and scuffs throughout. Very good. 300/500



427

427. **Frostie Root Beer Tin Sign.** American, 1950s. Round sign in the shape of a bottle cap with a bearded character holding a root beer. 12 ½" diam. Scattered scuffs and chips, marginal dents. Very good. 300/400

428. **Hu La and Green Spot. Pair of Embossed Tin Signs for Fruit Beverages.** American, 1940s. Two printed signs on tin, one for a Hawaiian pineapple beverage, the other for orange-ade. 11 x 20" ea. Bent and scratched, large stain on lower right of Hu La, good overall. 100/150

429. **Nehi Embossed Tin Sign.** American, 1950s. Bright yellow and red sign advertising curb service. 28 x 20". Scattered scuffing and scratches, but overall very good. 300/500

430. **Nutri-Cola Tin Advertising Sign.** American, 1950s. Bold green and red graphic designed by Paul Rand. Edgewear, chipping in top left quadrant, scattered scuffing. Very good. 200/300

431. **Orange Crush Advertising Thermometer.** Evanston: Orange Crush Intl., 1950s. Lithographed tin with thermometer on bottom half. 28 ½ x 7 ½". Lightly soiled and faded, marginal dents, otherwise very good. 200/300

432. **Miscellaneous Breweriana and Soft Drink Advertising Pieces.** American, bulk 1950s. Includes framed Narragansett sign, Goebel Frost Finished store display, Lone Star 1964 calendar, Molson tin over cardboard sign, Felsenbrau tin over cardboard sign, repro Ted Williams Moxi sign, Spearman Ale counter sign, and several modern beer coasters. All in good to very good condition. 200/300



428



429



431



430



432



433



434



437



438



435



436

433. **Brown Button Coca Cola Electric Wall Clock.** 1950s. Metal wall clock mounted to wooden and Masonite marquee. 18" diam. Paint chipped near clock hands, wooden mount lightly worn. Not tested. Good.

100/200

434. **Tastemark Milk Wall Clock.** Cincinnati, ca. 1950s. Plastic light-up wall clock featuring the Tastemark label. 14 1/2" diam. Working. Few scrapes, back metal enclosure loose. Very good.

100/150

435. **Dr. Pepper Wall Clock.** Brookfield, Wisc.: Howard, 1987. Plastic wall clock with faux wood trim. 21 x 17 1/2 x 6 1/2". Lights up, hands not working. Vertical sides of faux wood trim missing, scrapes and light soiling on face. Good.

50/100

436. **Vintage 7-UP Wall Clock.** Northbrook, Ill: Underwriters Laboratories, 1970s. Plastic light-up wall clock with faux wooden frame. 18 x 12 x 3". Working. Scuffs and light spotting. Good.

100/150

437. **Williamson Heating and Cooling Advertising Clock.** 1950s. Light-up wall clock advertising the Des Moines, Iowa heating and cooling firm. Working. 17" diam. Soiling, paint worn, rust on metal details. Good.

100/150

438. **Enameled Cast Iron Gent & Co. Pulsynetic Train Station Clock.** Leicester, early 20th century. Wall clock with Roman numeral dial. Later Plexiglas cover and Lanshire electric movement. 19" diam. Not working. Minor chips to enamel, lacking screws to frame.

200/300



439



440

TOBACCO

439. **Three Star Tobacco Porcelain "Sold Here" Signs.** American, ca. 1920. 24 x 12". Condition varies.

400/600

440. **Four "7-20-4" R.G. Sullivan's Quality 10 Cent Cigars Porcelain Signs.** American, ca. 1920. 23 x 10 1/2". Condition varies, but overall very good.

800/1,200



441

441. **Two Devilish Cigar Embossed Tin Signs With Chain Hangers.** New York: Wolf & Co. Selling Agents, ca. 1910. 13 3/4 x 9 3/4". One sign has some paint flaking and light rust and the other is very good.

200/400

442. **"Call for Phillip Morris" Embossed Tin Sign.** American, ca. 1930. Full-length figure with strong colors. Nail holes rusty. With a few bends in sign. 46 x 16".

400/600

443. **Chesterfield "Best for You" Embossed Tin Sign.** Liggett & Myers Tobacco Co., ca. 1960. Bright colors with two large packs of Chesterfield cigarettes. 29 x 23 1/2". Bright colors, lower corner damage.

100/200

444. **Sweet Mist Chewing Tobacco General Store Counter Top Container.** Detroit: Scotten Dillon Company, ca. 1913. Holds forty-eight 5 Cent packages (not present). 10 1/2 x 8". Few scuff marks, but overall excellent.

100/200

445. **Hi-Plane Tobacco Embossed Tin Sign.** Circa 1940. Nice photo of tobacco tin with vintage airplane. 35 x 11 1/2". Minor damage to edges, but overall very good.

200/300



442



443



444



445



446

447

448

449

446. **Recruit Cigarettes Advertising Folding Chair.** American, ca. 1900. Advertising on both the front and back. 31" x 16 ½". Crack in middle of wood seat otherwise very good.

200/300

447. **Piedmont Cigarette Advertising Folding Chair.** American, ca. 1910. Lettered, "For cigarettes Virginia Tobacco is the Best." Porcelain signs front and back. 31 ½ x 16 ½ x 16". Both signs excellent.

300/500

448. **Piedmont Cigarette Advertising Folding Chair.** American, ca. 1910. Lettered, "For cigarettes Virginia Tobacco is the Best." Porcelain signs front and back. 31 ½ x 16 ½ x 16". Both signs chipped at middle.

200/400

449. **Duke's Cameo Cigarettes Advertising Folding Chair.** American, ca. 1910. Pretty lady on front and back panel. Some paper loss. 30 x 16 ½".

200/400

450. **Star "Save the Tags" Cast Iron Tobacco Cutter.** Philadelphia: Enterprise Mfg. Company, ca. 1890. 18 x 7". Raised lettering has been repainted, otherwise excellent.

100/350

451. **Eldred Mfg. Co. "Wireless" Cigar Lighter.** Eldred Mfg. Company: Chicago, ca. 1900. Operates with a dry cell battery. Oak case and metal fuel tank. Battery not included. 14 ½ x 7 ½". Not tested.

400/600

452. **Midland Electric Cigar Lighter Model L.** Davenport, Ia.: Davenport Mfg., ca. 1930. Front and two side panels have local advertising. Operates with a dry cell battery. 15 x 7". Excellent.

400/600



453

456

457



455



454



458



459

453. **Pair of Cast Iron Cigar Cutters on Wood Base.** Comprising: (1) Smoke the Winthrop, Joseph Whitcomb & Co., Springfield, Mass., 3 x 3". Very good. (2) Smoke Tri-Mount Cigars, Boston. 3 x 3". Light rust.

400/600

454. **Yankee Match Dispenser and Cigar Cutter.** Working. 7 x 5 ½ x 8".

500/750

455. **Artie Mechanical Cigar Cutter.** Original, working condition. Height 10".

2,400/3,200

456. **Erie Specialty Co. Cast Iron Cigar Cutter.** Erie, Penn., 1889 [patent date]. Wind-up automatic cigar cutter. 6 x 4 ½ x 4". Minor wear to finish.

100/200

457. **Harvard Cigar Glass Case.** American, ca. 1910. Glass case held Harvard cigars. 10 Cent buys a cigar and when case is opened a bell rings to let the clerk know that a cigar has been purchased. Original sponge to keep the cigars moist and paper advertising on three sides. 10 ¾ x 7 ¼". Very good.

200/400

458. **Chesterfield Cigarettes Tin Flange Sign.** American, 1950s. Double-sided printed metal sign depicting a pack of cigarettes. 16 ½ x 11 ½". Minor edgewear, scattered scuffing, else very good.

150/200

459. **Lot of Three Vintage Advertising Objects.** American, early to mid-twentieth century. Including Old Mason Whisky match striker (5 x 3 x 2 ½"); Queen Caroline cigar tray (7 x 6"); and Wrigley countertop glass tray (8 x 9").

50/100

POSTERS



Lot 462



461



460



462



463



464



465

460. Philips...Et Leur Joie Durera c'est un Televiseur. Paris: Elvinger, 1962. Designed by R. Geleng. 45 x 61". Linen backed. A.

200/300

461. Terrot & Cie. Dijon. Rouler sur une Bicyclette c'est toujours descendre une cote. Paris: Wall, ca. 1913. Designed by Breville. Color lithograph depicting a bicyclist smoking a cigar and reading while coasting. 63 x 47". Linen backed. Extensive over-coloring and evening across image. B.

500/750

462. Socovel Motorcycles Advertising Poster. La Moto Qui Donne Des Ailes. [Italy], ca. 1950s. Lithograph. 24 1/2 x 33". Linen backed. A.

200/300

463. Get Gulflex Lubrication. Sure Rides Smooth... N.p., 1931. Lithograph. 42 x 27 1/2". Linen backed. Bottom margin with a band of toning and discoloration. B+.

150/250

464. Gulf No-Nox Gas. Best 10 Gallon Buy... N.p., ca. 1930s. Lithograph. 41 x 27". Linen backed. A.

150/250

465. Gulfpride Oil. Best for Tough Going... N.p., 1930. Lithograph. 41 x 27". Linen backed. Minor dampstain to lower right; small restored loss to upper margin. A-.

150/250



466



467



468



469



470



471



472



473



474



475



476



477

466. **Player's Cigarettes "Medium."** N.p.: Impact, ca. 1910s. Lithograph tobacco advertising poster depicting a sailor within a life-saver buoy, sea vessels, and a lighthouse in the distance. 30 x 20" Linen backed. Restored tiny losses, scattered over-coloring along creases, a few repaired closed tears. A-
150/250

467. **Lucky Lager. It's Lucky When You Live in America.** San Francisco/Los Angeles, 1950s. Offset lithograph depicting six men and women at a football game. 27 1/2 x 58". Linen backed. A. 295_505. 117, 119
200/300

468. **Lucky Lager. One of the World's Finest Beers.** San Francisco/Los Angeles, 1950s. Offset lithograph. 27 1/2 x 58". Linen backed. Restored loss to upper right corner, closed tears with scattered over-coloring. B+.
200/300

469. **Burger Beer. Have Fun in Indiana.** Cincinnati/Akron, ca. 1955. Lithograph advertising poster featuring an automobile race evoking the Indianapolis 500. 25 x 21". Linen backed. Minor restoration to creases short tears at edges. A.
600/900

470. **Burger Beer. Have Fun in Ohio.** Cincinnati/Akron, ca. 1955. Lithograph advertising poster features a riverboat and vignettes of a basketball hoop and football goalpost. 25 x 21". Linen backed. Edges with restored abrasions and repaired closed tears with some over-coloring. A-
300/500

471. **Burger Beer. Have Fun in Kentucky.** Cincinnati/Akron, ca. 1955. Lithograph advertising poster depicting a horse race evoking the Kentucky Derby. 25 x 21". Linen backed. A.
300/500

472. **Burger Beer. Have Fun in South Carolina.** Cincinnati/Akron, ca. 1955. Lithograph advertising poster depicting a horse-drawn carriage outside a Southern plantation home. 25 x 21". Linen backed. A.
300/500

473. **Burger Beer. Have Fun in Tennessee.** Cincinnati/Akron, ca. 1955. Lithograph advertising poster featuring a water skier. 25 x 21". Linen backed. A.
200/300

474. **Lone Star Beer. Get a "Close-Up" on Pleasure.** 1965. Offset lithograph, proof copy, featuring a television cameraman. 45 x 35 1/2". Linen backed. A.
80/125

475. **Old Overholt Rye Canvas Advertisement.** 1913. Lithograph on canvas, original floral gilt-wood frame. Overall 38 x 27". Image darkened, soiling to verso, scattered chipping to frame.
300/400

476. [Sports] **Drink Hot Chocolate Diner Sign Featuring Boys Basketball.** Cincinnati: G.P. Gundlach, 1950s. Glossy-finish lithograph window card. 21 x 14". Soiling, losses, and tears, main image area attractive overall. B-.
50/100

477. **Two Beer Advertising Posters Featuring Maps.** Including "Ski Colorado—Hien Brau" (Tivoli Brewing, ca. 1960s), 19 1/4 x 24"; and "Perfection Beer Angler's Guide" (ca. 1960s), 32 1/2 x 35". Linen backed. Minor restored marginal tears and losses.
100/200



478



479



480



481



482

478. [Beer] **Group of Eight Beer Advertising Posters.** 1950s–60s. Including Hamm's, Schlitz, Rib Mountain, Harvard, Denver, Meister Brau [2], and Budweiser. Linen backed. Size of largest 12 ½ x 38". Condition good overall, scattered minor restoration.

250/350

479. [Fruit] **Group of Three Citrus Growers Advertising Posters of Florida, Brazil, and Hawaii.** Circa 1950s–60s. Including "Oranges from Brazil—Juicier Still" (8 ½ x 29 ½"); "Florida Oranges/Nature's Prescription for Winter Health" (25 ½ x 18"); and "Dole/We're Having a Hawaiian Celebration" (20 ½ x 57"). Linen backed. Condition very good overall.

100/200

480. **Langlois Cara Nome. Society's Favorite Perfume.** Circa 1930s. Color lithograph on cardboard. 33 x 20". Unmounted. Light corner wear. A.

300/500

481. Auriac, Jacques (1922–2003). **Bons Cepages. Le Vin De L'Epargne.** Paris: De la Vasselais, ca. 1950s. Lithograph. 61 x 45". Linen backed. Over-coloring along folds; repaired closed tears, creases at edges, scattered restoration to image. B+.

300/500

482. **Fap Anis. Celuli Des Connaisseurs.** Paris: Wall, ca. 1920s. Designed by Delval. Color lithograph. 45 ¾ x 61 ¾". Linen backed. Scattered pale soiling to margins, flecking to upper right corner, central image bright and vivid. A-.

400/600



483



484



485



486



487



488

483. **Et...Pour Terminer un Armagnac Barnabé.** Paris: Damour, 1945. Lithograph. 63 x 46 ¼". Linen backed. Restored corner loss to upper left; A-.

250/500

484. **Ricard. Cinq Volumes d'eau un Ricard.** France, 1948. Designed by Emhel. Lithograph. 25 x 19 ½". Linen backed. Repaired closed tear to left margin; small loss to image restored. A-.

100/200

485. **Bologna. Remator.** Genova: Barabino & Graeve, ca. 1930s. Color lithograph. 39 x 27". Linen backed. Restored losses with over-coloring to margins and portions of image. B+.

300/500

486. **For Spring Delivery Order Your Ford Now.** N.p., ca. 1920s. Designed by Butler. Lithograph urging buyers to place orders ahead of the "spring shortage." 39 ¾ x 27". Linen backed. Minor closed marginal tears. A-.

300/500

487. **The Saturday Evening Post / Alcoholics Anonymous.** 1941. Offset newsstand lithograph designed by Norman Rockwell advertising the March 1, 1941 issue of the magazine, employing a Droste effect in which the undergraduate's head appears on the magazine cover she herself holds. 28 x 21 ¾". Unmounted. Minor toning to edges. A.

300/600

488. **Buy Christmas Seals / Tuberculosis is Preventable and Curable.** 1935. Designed by Ernest Hamlin Baker. 24 ¾ x 19". Older linen backing. Scattered marginal tears and soiling. B+.

200/300



489



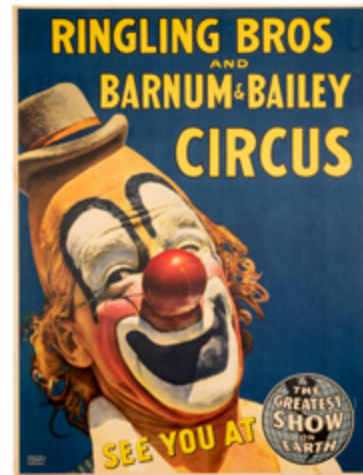
490



491



492



493



494



498



495



496



497



499



500

495. **Carter Beats the Devil.** Cleveland: Otis Litho, ca. 1930. Color lithograph window card (22 x 14") depicting a smiling Carter holding the winning hand against Mephistopheles. Minor marginal wear, hole-punches to banner portion and along right edge of image; several small closed divots to lower image area. A-

200/300

496. **Lot of Four Vintage Pinup Calendars.** American, 1930s–60s. Including Gil Elvgren ("Is My Face Red"), 46 x 22"; Billy DeVorss ("Happy Landing"), 46 x 22"; Bianchi ("Pretty Snappy"), 34 x 16"; and Monark Motors, 27 x 18".

150/300

497. **Two Marilyn Monroe Pinup Calendar Prints.** American, ca. 1950s. Trimmed to central image areas and framed, including "A New Wrinkle" (image area 20 x 15 1/2") and "Vivacious Marilyn" (image area 13 1/2 x 10 1/2"). Wooden frames.

150/250

498. **Framed Trio of Bettie Page Pinup Photographs.** Circa 1950s. Vintage black and white prints, beachside poses, handsomely matted in a gilt wooden frame. Overall 17 x 33".

300/500

499. **Group of Marilyn Monroe Pinup Magazines and Memorabilia.** Including *Life* magazine (April 7, 1952), complete issue [cover detached]; "Cheesecake: An American Phenomenon" (1953); Andy Warhol Pop Art portfolio (1989); FDC set in leatherette case; set of four Soundcards; two picture disc LPs; and other magazines and records.

100/200

500. **Collection of Tina Louise Records, Magazines, and More.** Including the scarce LP "It's Time For Tina: The Songs of Tina Louise" (Concert Hall LP H-1521, 1957); two signed 8 x 10" photos; "Melody of Love: Moments to Remember Vol. 2" LP [three copies]; a group of about 25 1950s men's magazines including *Monsieur*, *Scene*, *Escapade*, *Man to Man*, *Harem*, *Tempo*, *Playboy* and others whose covers or internal pages feature Louise; and a binder of trimmed magazine pages and photos.

200/300

489. **Buy Christmas Seals / Protect Your Home From Tuberculosis.** 1936. Designed by Walter Sasse. 26 x 19". Older linen backing. Scattered marginal tears and light soiling. A-

200/300

490. **Boost! Boy Scout Week.** New York: Lutz & Sheinkman, ca. 1920s. World War I-era lithograph designed by Norman Rockwell. 28 x 17". Linen backed. Creases across image; trimmed margins affecting some lettering. B.

100/200

491. **Chicago Roller Skate Co. 1953 Calendar.** St. Paul: Brown & Bigelow, 1953. Offset lithograph with stapled six-month calendar. 24 x 14". Accompanied by a 1933 letter on Chicago Roller Skate Co. letterhead signed by the sales manager to a customer, regarding his order.

100/200

492. **Grafofoni Columbia. Vendita Anche A Rate Cataloghi Gratis / Café Odeon.** Two pieces, the first a modern photomechanical reprint of the classic advertising poster (framed, 57 x 41 1/2" overall), the second a modern oil painting of an advertising poster for Café Odeon (framed, 65 x 53").

100/200

493. **Ringling Bros. and Barnum & Bailey. See You At the Greatest Show on Earth.** Circa 1960s. Lithograph depicting the famous clown Lou Jacobs, after artwork by Maxwell Frederic Coplan. Approx. 45 x 31". Several scrapes with losses to lower image area. Mounted to board.

100/200

494. **Carter The Great. World's Weird Wonderful Wizard.** Cleveland: Otis Litho, ca. 1926. Color lithograph window card (22 x 14") showing a turban-clad Carter in profile, bats and demons flying around him. Minor marginal wear. A.

200/300

MISCELLANEOUS



Lot 556



501



502



503



504

501. Optician/Optomtrist Neon Trade Sign. Lima, OH: Neon Products, ca. 1930s. Early and unrestored trade sign, hand-painted eyes on metal, gilt-wooden frame, light blue neon octagonal eyeglass form. 23 1/2 x 10". Working.

1,500/2,500

502. Monarch Finer Foods Salesman Sample Portfolio. Dubuque, Iowa: Monarch Finer Foods, ca. 1939. Thirty-one pages (17 1/2 x 11 3/4") of colored lithographed product labels. In addition, there are photographs of their many locations throughout the U.S. as well as photographs of how their merchandise should be displayed and much more. Over 50 pages total all contained in a black pebbled portfolio stamped with the Monarch name in gold. 18 1/2 x 12". Excellent.

1,000/2,000

503. Elephant Nodder Mechanical Store Display. Circa 1920. Papier-mâché elephant nods endlessly. Window in one side of body shows simple mechanism that keeps the head moving. Mounted to a hardwood base. 27 x 9 x 22". Battery operated. Minor wear to hinge of door, else very good. Working.

1,500/2,500

504. Elsie the Borden's Cow Figural Moveable Store Display. New York: Advertising Statuettes Corp., ca. 1950. It at one time adorned the interior of Svoboda's Nickelodeon Tavern and Museum in Chicago Heights, IL. The head is molded rubber and needs slight repair while the rest of her is composition. When plugged in Elsie's life size rubber head contentedly chews her cud (working). Cord and plug are original. Very rare.

1,000/2,000



509



508



510



514



505



506



507



511



512



513

505. **Bear Brand Honey Mechanical Store Display with Marquee.** American, ca. 1960. Wood and composition. 24 x 18". Motor works but no movement. Should be an easy fix. Excellent.

600/1,000

506. **Pizza Maker Animated Restaurant Display.** 1960s. Chef dressed in white uniform and tall hat, pizza in outstretched hand. Vinyl jacket and pants. Height 43". Working.

500/1,000

507. **Eskimo Pie Countertop Cooler.** Eskimo Pie Corporation, ca. 1950. Countertop cooler with attractive graphics on one end. 15 1/2 x 25 x 12". Requires new cord; not working.

800/1,200

508. **Wiggle With Jiggles 10 Cent Floor Model Vibrator.** Conway, PA: Continental Mfg., ca. 1960. Bright red and blue graphics on white field depicts Jiggles the clown. Floor plate indicates spot for user to stand. Height 57". Minor wear to finish. Working.

1,000/1,500

509. **General Electric National Mazda Country Store Light Up Bulb Display.** East Newark, N.J.: General Electric, ca. 1920. Five bulb counter top light up display with tin lithographed side panels. Original cord and plug. Each bulb has its own switch. 17 x 8". Not tested. Excellent.

800/1,500

510. **Ever Ready Safety Razor Clock.** Winsted, Conn.: Wm. L. Gilbert Clock Co., ca. 1910. One of several clocks made for Ever Ready by Gilbert Clock Co. 22 x 17 3/4". Face has had a coat of shellac applied, lacking pendulum. Original hands and instructions on back.

200/400

511. **Diamond Dyes Cabinet. Children Playing.** Burlington, Vermont: Wells & Richardson Co., 1912. Charming embossed tin lithograph front panel with children playing. Tin instruction panel on rear. 24 x 14 3/4". Excellent.

1,000/2,000

512. **Dr. Frost's "Homeopathic Remedies Build Health" Medicine Cabinet.** American, ca. 1900. 38 drawers eight contain product. Tin lithograph front panel with list of remedies. 19 1/2 x 13". Top slightly warped and small rust spot on front panel.

600/800

513. **Humphreys' Remedies Medicine Cabinet.** New York: Humphreys', ca. 1900. Double sided tin panels listing the contents of the medicines in the cabinet. Forty cubby holes for medicines. 30 contain product. 21 x 18 3/4". Front panel has damage below "Humphreys'". Back panel very good.

300/500

514. **DeMoulin Bros. Lung Tester Device.** Greenville: Ed De Moulin & Bro., ca. 1900. Fraternal order initiation device, in which the inductee blows into the tester to measure his lung capacity to his brothers, only to have black soot or corn starch blown back at his face. At the same time, a blank cartridge explodes inside the device. Paper-covered wooden box with internal metal mechanism and fixtures, cleanly detached from original cast metal stand. Height 17". Covering weathered and torn in spots, portion of dial deteriorated. Not tested.

500/700



515

516

517



518

519

520



521



526



522

523



524



525

515. [Medical Quackery] **Renu-Life Violet Ray Generator Model R.** Detroit, 1920. Electrotherapy device in self-contained hardshell case, with ten metal and glass attachments, paperwork, and other parts. Not tested.

200/300

516. [Medical Quackery] **Elco Violet Ray Generator.** Chicago, ca. 1920s. Electrotherapy device in self-contained hardshell case, metal and glass attachments, instruction booklet, bulbs, and other parts. Not tested.

150/250

517. [Medical Quackery] **The Apollo Medical Apparatus.** Circa 1916. Portable dry-cell battery unit self-contained in wooden box, with accessories, for electrotherapy. Not tested.

100/200

518. **Coin-Operated Electric Shock Machine.** Nice, France, ca. 1940. Grasp the two metal handles after inserting the coin to test the electricity running through your body by receiving a mild shock. Your internal electrical "forces" are measured by a meter on the front of the machine. Wooden case. 11 x 6 x 9 1/2". Lock and key. Not tested.

400/600

519. **Country Store "Golden Crisp Pretzels" Tin Counter Dispenser.** United Pretzel & Cone Co. stenciled on rear door. Original paint and stenciling. Reach in and buy a pretzel. 14 1/2 x 13 1/2 x 11".

200/400

520. **Boye Needle Co. Countertop Display Cabinet.** Chicago: Boye Needle Co., ca. 1910. Tin lithograph front panel and top. 18 x 18". Top dirty, needs cleaning. Front panel is very good.

100/200

521. **Country Store Sanitary Cheese Knife.** American, ca. 1900. Used to cut a wheel of cheese. 16 1/2 x 12". Stenciling on cover very good.

200/400

522. **Ex-Lax Large Porcelain Thermometer.** American, ca. 1940. "The Chocolate Laxative." 36 x 8". Excellent.

200/400

523. **Two Advertising Thermometers.** Including Newkirk's ITCO Farm Supply, 7 1/2 x 2 1/4", and a Ryan Funeral Parlor thermometer, 6 1/2 x 2 1/4".

50/100

524. **Thermometer and Japp's Hair Rejuvenator Sign.** Comprising: (1) First National Bank Batavia, New York, small tin advertising thermometer, 12 x 3 3/4". Excellent. (2) Japp's Hair Rejuvenator tin over cardboard advertising sign. 13 x 9". Excellent.

100/200

525. **Alka Seltzer Drug Store Counter Top Dispenser.** "Be Wise Alkalize." Pull lever and drop a tablet in the crusher. Turn wheel to crush tablet then it drops into a glass of water. Original bottle of tablets. 14 x 5". Tin litho sign on top is excellent.

200/400

526. **Kodak Store Display Sign.** American, ca. 1950. Sign is in the shape of a package of Kodak Film 620. Printing on all six sides. 27 x 10 1/2". Excellent.

200/400



528



527



529



530



531



532



533



534



535



537



536



538



539

527. The Salvation Army Porcelain Advertising Sign. American, ca. 1960s. Shield-form sign for the charitable organization. Tough-ups in several areas. 36 x 30".

250/400

528. Dr. West Counter Display Tooth Brush. American, ca. 1950. Dr. West's "Miracle Tuft" oversized plastic tooth brush. 18". Excellent.

100/200

529. Sanitary Requirement Cardboard Sign. American, date unknown. Overall 15 3/4 x 8". Not examined out of frame.

50/100

530. Two Railroad Reverse Glass Ticket Signs. Circa. 1950. Including Chesapeake & Ohio R.R. sign, and a New York Central R.R. sign. Both 34 x 4". Very good.

100/200

531. Barber Shop Double Sided Porcelain Sign. American, ca. 1950. Minor chipping and rust around gromets and one corner slightly damaged, otherwise excellent. 24" x 12".

200/400

532. Three Vintage Kraft "Milk Bank Boost" Embossed Tin Signs. Set includes Pig, Rooster & Cow. Sizes vary, the largest 19" tall. Condition very good to excellent.

400/600

533. Six Vintage Advertising Signs. Includes Riley Bros. "That's Oil"; Armour's "Veribest"; Peters "Diamond Brand" Shoes; Farm Bureau "\$500 Reward"; Kansas Farmer, Mission Orange thermometer. Condition varies.

100/200

534. Esso Elephant Kerosene Reproduction Enamel Sign. Single sided porcelain sign depicting a blue elephant on a red background. 23 1/2 x 12". Fine.

100/200

535. Pocahontas Fuel Co. Tin Over Cardboard Sign. Coshocton, Oh.: The American Art Works, 1910. Lithograph on tin depicting an indigenous woman in traditional dress; gilt text above and below portrait bust. Printed information about the company and hanging string on verso; two rings on bottom margin to aid in hanging. Painting by Raphael Beck. 14 1/2 x 11 1/2". Scattered spotting and scuffs, gouge in lower right of portrait, sign warped slightly, verso soiled. Displays well, very good overall.

800/1,200

536. Budweiser and Winston Cigarettes. Two Vintage Advertising Signs. Includes Budweiser "Custer's Last Fight" and Winston cigarette thermometer. Condition varies.

100/200

537. Sauer's Flavoring Extracts Embossed Tin Sign. New York: Sauer's, ca. 1898. Early advertising sign with wonderful graphics. 23 1/2 x 9 1/2". Dirty with minor rust but it might clean up considerably. A truly beautiful early sign.

100/200

538. Three George Weston Limited Display Frames. Windsor, Ontario: ShoWell, mid-century. Square hinged aluminum frames with the embossed Weston's logo. Two lacking glass inserts; light to moderate rust and oxidation. Two maker's labels affixed inside. 10 1/2 x 10 1/2".

50/100

539. Lincoln Porcelain Advertising Sign. Circa 1940. Single-sided porcelain sign, possibly used to advertise a bank or the famous Lincoln Towing Service of Chicago. With holes for flashing bulbs, and small mounting holes. Approx. 106 x 20". Minor chips and wear.

500/1,000



540



544



546



547



541



545

546. Salesmaker Sign Kit. Day-Glo Automobile Dealership Cards. Columbia, Penn: United Sound & Signal Co., ca. 1950s. Box of cardboard windshield displays for used cars, printed in Day-Glo orange, blue, and black on black or white cardboard, including sales phrases "Low Miles," "A Real Buy," "Easy Terms," and others, plus numerals, makes (Olds, Studebaker, Chrysler, Cadillac, Packard, and others), and more. Size of largest 14 x 5". Original box.

400/600

547. Durant "75" Automobile Advertising Poster. Lansing: Durant Motors, ca. 1928. Early automobile poster for a little-known manufacturer. Framed. 36 1/2 x 24". Lower third water damaged and misshapen. Not examined out of frame; as is.

50/100



548

548. New Haven Clock Co. Country Store Display Case for "Tip-Top" Pocket Watches With Ten Pocket Watches. New Haven, Conn: New Haven Clock Co., ca. 1910. Wood grained tin & glass display case for Tip-Top Watches. Ten Pocket watches included (Not tested). Great case for your collection of gambling pocket watches. 10 1/4 x 8 1/2". Excellent.

300/400

549. Maynard Garter Country Store Display Case. American, ca. 1910. Glass & wood display case for "Maynard" garters. 15 1/2 x 6 1/2". Very good.

100/200

550. Beauty Mist Panty Hose Store Counter Display. Circa 1960. Store counter panty hose display on wire stand. 19". Excellent.

100/200



549



550



551

551. Thirty Metal Signs in Original Display Box. Chicago: Leslie Sign Co., ca. 1930. Thirty different metal signs. A few examples: Deliver All Goods in Rear, Flat for Rent, No Checks Cashed and Room and Board. Signs may not be the same as printed on the front panel. Signs measure 9 3/4 x 6 1/2". Light rust on display box but signs excellent. Unusual.

200/400

540. Bell System Public Telephone Flange Sign. Mid-century double-sided enameled sign with embossed lettering. 11 x 11". Overall good condition with paint losses and rust to corners.

100/150

541. Bausch & Lomb "Balopticon" Magic Lantern. Rochester: Bausch & Lomb, ca. 1928. Includes on Mazda 1000 watt bulb, two boxes of lantern slides, original cord and ceramic plug, two wood slide holders, several pieces of literature, reflector, and original shipping crate. 15 x 12". Not tested.

100/200

542. Brass and Wooden Ship's Binnacle. London: Kelvin Bottomley & Baird, ca. 1910. Handsome oak and brass construction with large compass, cast iron ballasts, and oil lamp. 57" tall. With key. Working.

1,500/3,000

543. Lady Englander Princess Box Spring Store Display. Circa 1950. Store display showing the inner springs of the "exclusive body-tuned free-end offset coils" of this mattress design. Original tag. 26 x 18 x 6".

50/100

544. Calcutta Rubber-Namel Tin Stand Up Counter Display Store Sign. Cincinnati: Cincinnati Varnish Co., ca. 1930. Wooden frame enclosing a tin sign with eighteen different color samples attached to front, easel to back, litho of automobile to top; some rust damage. 22 1/2 x 16 1/4".

50/100

545. Passenger Railroad Smoker Car Hanging Sign. American, ca. 1930s. Black metal sign with white lettering on both sides, identification label to one side attributing the sign to the New York, New Haven, and Hartford line. 21 1/2 x 5 1/2". Rusted at lower edge, scuffed.

50/100



542



543



552



555

552. **Over 30 Political and Advertising Pinbacks.** 1890s–1920s. Celluloid pinbacks, most with inner paper labels retained, by Whitehead & Hoag and others, subjects including W.J. Bryan, Wool Soap, Perfection Cigarettes, Chicago American “Foxy Grandpa,” Horlicks Malted Milk, various international leaders, and others. Widest diam. 1”.

50/100

553. **J.H. Bunnell Universal Stock Ticker Machine.** Universal Ticker Serial Number 3508, Model 3–A, 22 ohms. Lacquered brass mechanism, black painted cast iron base (likely repainted), glass dome. Diam. 7 ½”. Height including tape roll 9 ½”. Provenance: Valley of Milwaukee, Ancient Accepted Scottish Rite, Milwaukee, Wisc.

1,000/2,000

554. **National Cash Register #333.** Dayton, Oh.: National Cash Register Co., ca. 1930. Standard brass 21 Key cash register with amount purchased sign. Key for front panel. Excellent.

800/1,200

555. **National Cash Register #313.** Dayton, Oh.: National Cash Register Co., ca. 1930. Standard brass candy store register and one of the most collectible because of its small size. Fancy scroll work With the National name on the verso. Lock and key. 17 x 9 ¾”. Working.

1,000/2,000



556

556. **National Cash Register #317.** Dayton, Oh.: National Cash Register Co., ca. 1930. Same as above except has housing for a roll of receipts thus a different model number. Highly polished with “Amount Purchased” sign probably not original. Lock and key. 21 (to top of sign) x 12”. Working.

1,000/2,000

557. **National Cash Register Cast Iron Receipt Box.** Dayton, Oh.: National Cash Register Co., ca. 1940. National name cast on verso. Original Lock and key. 6 x 6 ½”. Excellent.

200/400

558. **Ingle System Token Dispenser Register.** Dayton, Oh., 1909. Three drawer oak case with cast metal marquee, six coin slots and Vitrolite change tray. Working, original surface, includes keys. 18 x 12 ½ x 10”. Rust on metal portions, wear on edges of wood. Very good.

800/1,000

559. **J.C. Cox Mahogany Pub Coin Till.** Antique coin till with central mechanism, hinged and glazed door, twin stacking shelves and rectangular base. Drop in a coin and move the levers to let the coin drop to the bottom and ring a bell. 21 x 13 x 21”. Working. Wood slightly cracked, no keys. Very good.

500/700

560. **Correct Weight Penny Scale.** Germany: Seca, ca. 1935. Black and red paint with porcelain dial. One key. 46 ½” high. Working.

300/500

561. **Trebol Industria Argentina Balance Scale.** Argentina, 1930s. Marble platforms with cast metal legs and internal parts encased in glass. Original metal plates stamped by an Argentinian manufacturer. 28 x 14 x 13 ½”.

400/800



557

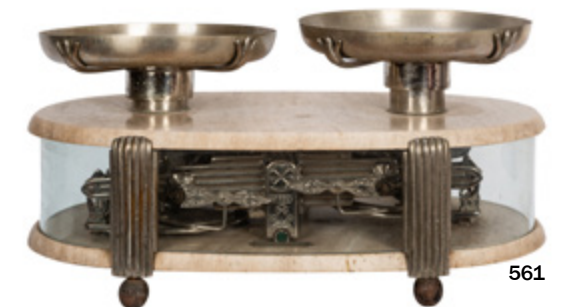


558

560



559



561



553



554



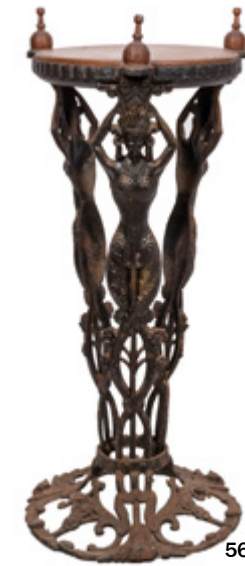
562



564



567



568



570



563

562. **A Group of Torsion Balance Pharmaceutical Scales and Weights.** Circa late 19th/early 20th century. Wooden scales with an assortment of brass and glass counterweights. Some pieces missing.

100/200

563. **Christian Becker Chain-O-Matic Scientific Scale.** New York, early twentieth century. Serial Number B-39930. Enclosed in a wooden cabinet with drawer at bottom with a few additional parts. Approx. 18 x 20 x 10". Not tested.

50/100

564. **Vintage Wooden Tabletop Weaving Loom.** American, ca. 1910s. Wooden loom with metal parts. Structurally sound and well-kept. 28 x 27 x 23".

200/300

565. **Antique Chinese Cloisonne Incense Burner and Cover, Ornately Carved Wooden Stand.** A large nineteenth century tiered pagoda-form tripod incense burner, with carved wooden stand and eight removable ventilation flaps, cloisonné with floral designs, gilded edges and bands, dragon's heads to feet, hardwood base with carved with beetles and salamanders. Overall 17 x 7 1/2 x 5 1/2". Signed on the middle band in Chinese. Crack to base repaired; a few tiny nicks to body, fine overall. Owned by magicians Virgil and Julie Mulkey.

1,000/1,500

566. **American Stained and Leaded Glass Window.** Mid-century square stained glass window within a heavy cast iron frame, in red, teal, and yellow, depicting a trio of carp-like fish circumscribing a three-leaf clover. 21 x 22 1/2". Several cracks to one red pane, otherwise good.

200/400

567. **Figural Metal Table Base Depicting Cherubs.** Antique Neoclassical trio of kneeling cherubs, mounted to a tiered base with some paint remnants, used to support a tabletop. Height 12". Width 13". Logo to lower side of the letter C at both ends, within a circle and triangle.

200/400

568. **Cast Iron Egyptian Revival Pedestal Table.** Chicago: Booth Co., early 20th century. Cast iron with turned wooden ornaments and top, marked by the manufacturer, depicting three mermaids. Height 31". Diam. 12". Unrestored, quite heavily rusted.

100/200

569. **Group of Three Desktop Card Catalogs.** One four-drawer and two three-drawer units, dovetailed oak and cloth. Four-drawer unit bearing a Siekert & Baum Stationery plaque.

60/125

570. **Card Catalog Double-Stacked Cabinet.** Two contemporary stacking units, 30 drawers total.

200/300

571. **Oak and Glass Countertop Display Case.** Antique display cabinet, having a mirror to the spring-hinged rear door, metal latch, glass sides. 23 x 22 x 14".

100/200

572. **Nineteenth Century Carved Wooden Griffin / Lion Brackets.** Architectural grotesques, the first (height 22") depicting a winged griffin whose body terminates in a fishtail; the second (height 18") a lion. Both with scattered losses, a chipped fragment from the wing of the first piece retained loosely.

200/300



569



571



572



565



566



573



577

573. **George Flanagan Dictionary or Bible Stand.** Chicago, 1912. Oak and iron, adjustable supports, spine rest stamped with patent date, on casters, maker's mark. Height approx. 45". Very good.

100/200

574. **Antique Mercury Glass Gazing Globe on Stand.** Circa late nineteenth century. Nicked-plated base. Height 16 1/2". Globe diam. 7". Provenance: Valley of Milwaukee, Ancient Accepted Scottish Rite, Milwaukee, Wisc.

100/200

575. **A Group of Seven Relief Carved and Other Antique Walking Canes.** American or European, 19th to early 20th century. Including four relief-carved examples depicting occupational figures, eagles and birds, floral and other symbolic patterns, one having a bird-head L-form handle; a black wooden cane with silver or silver-plate knob, having the maker's mark "WM"; an ivory-topped bone cane; and a bamboo cane with semi-polished stone knob, ferrule, leather tassel. Height of tallest 41".

200/300

576. **Pair of Antique Stoneware Crocks.** The first by New York Stoneware Co., two gallon capacity mark, cobalt leaf (diam. 10"); the second with a three gallon capacity mark incorporated into a spiraling design (diam. 11"). Arched handles. Glazed interiors. Scattered slight chipping and discoloration.

150/250

577. **Collection of Vintage Carved Mechanical Bottle Stoppers.** Nine figural hand-carved wooden bottle stoppers with painted features, all but one with moving elements, including moveable mouths (one with squirter), extending necks, an accordion player, kissing dancers, a drunkard, and a smaller figure appearing under a larger figure's hat. Handsomely presented in a custom wooden display box. Most with tabs or string for control. Height of tallest 6". Very good.

100/200



578



579



580

578. **Lot of Primitive Antique Mouse/ Rat Traps.** Seven pieces, metal and wood traps for killing or capturing rodents. Size of largest 12 x 4 1/2 x 3".

50/100

579. **Group of Miscellaneous Antique Decorative Items and Toys.** Including an Art Deco figural nude lamp with green glass shade; a three-piece cast iron train set; a cast iron toy car; a monogrammed bone and silver cane knob; and a figural ceramic bookend on brass base.

80/150



581



582

580. **Lot of Decorative Metal and Wooden Figures.** Early to mid-twentieth century. Including a desk-size metal Sphinx (8" long); a bronze Chinese dragon oval portrait frame (4 1/2 x 3 1/2"); two figural cast iron shaving mirrors (heavily rusted); a carved wooden hippopotamus (signed and dated 1945 underside), one lower tooth chipped; a carved wooden folk art mirror depicting birds; and a carved double-headed dragon (12").

100/200

581. **Laliq Crystal Tete d'Aigle (Eagle Bust) Paperweight.** Frosted and clear figural crystal paperweight. Signed on the base. Height 4 1/2". Width 5 1/2". Fine.

300/400

582. **Laliq Crystal Nude Woman Figure.** Frosted figural crystal paperweight, signed on the base. Height 5 1/2". Width 6".

150/200



576



583



584



586



587



585



588

GAMBLING & CARNIVAL

583. Jar With 12 Pairs of Crooked Dice. American, ca. 1930. Twelve sets of "tops," With some nitrate deterioration typically encountered. Jar 9 1/2" and labeled "crooked dice."

200/400

584. Large Chuck-A-Luck Cage with Bell. Circa 1940. Oversize model. Dice tumble in the cage as it spins and the bell rings. Bell works, cage spins freely. 18" high. Bell possibly a replacement.

200/300

585. "Every Card A Winner" Punchboard. Circa 1940. Beautiful playing card graphics. The jackpot contains a complete deck of playing cards. 18 x 13". Slight paper loss at left, but unpunched. Original metal punch.

100/200

586. Two Large Die-Cut Punch Boards. 1940s and 50s. Boards unpunched with original metal punches.

50/100

587. Six Pinup Punchboards. 1940s and 50s. All unpunched, and most with original metal punch. Largest 13 x 13".

200/400

588. Cupid Amusement Park/Carnival Restroom Pointer Figure. English (?), ca. 1920. Cast iron bow and arrow forming the word "loo", plaster Cupid figure and potty, resting on a wooden base. Overall 35 x 36". Crack in left knee and minor paint chipping, otherwise very good.

2,000/3,000



589



590



591

589. Philadelphia Toboggan Co. Carousel Chariot Side. Impressive wooden and fiberglass model of a Philadelphia Toboggan Co. chariot side, finely finished in iridescent colors and elaborately and deeply carved in relief, with a cherub at the left side. The initials "PTC" incorporated into the design near the base. Used as a model to recreate the carousel at Seabreeze Park in suburban Rochester, New York. 74 x 47". Minor paint losses.

1,000/2,000

590. Pair of Rooster Cast Iron Carnival Shooting Targets. Chicago: H.C. Evans [?], ca. 1940. Knock down the roosters then hit the bulls-eye in the middle to pop the roosters back up. Birds measure 4 1/4 x 3". Original paint.

400/600

591. Wood Mallet for Carnival High Striker Game. American, ca. 1930. Used in conjunction with a high-striker strength testing game. Swing the hammer, ring the bell, and win a prize. 35" long. Lower portion cracked and taped.

100/200

592. Carnival Ball Toss Game. American, ca. 1940. Toss balls into the cat's mouth and win a kewpie doll. Wood folk art figural cat with original paint. 45 1/2 x 23". Spotty paint loss but overall very good.

200/400



592



TOYS

Lot 639



593

593. **Electric Automaton Drinking Bear.** Paris/New York: Asbro, 1930s. The figure raises the cup to its mouth, takes two swigs, and pours himself another. Genuine fur body with wooden paws, glass eyes, metal cup and bottle. Height 14". Working.

1,000/2,000



594

594. **Coin-Operated Singing Birds in Cage Automaton.** Switzerland: Reuge, ca. 1940. Birds flap their wings, move their heads, and sing when a coin is deposited. Three-bird model with brass cage and gesso base, electrically driven, with cord and plug. 26" high. Keys. Not working.

1,500/2,000



595

595. **A.C. Gilbert Erector Set No. 8 1/2. Amusement Park Ferris Wheel.** New Haven, 1954. Original red tin box, litho decals, two instructional booklets and one folding sheet of instructions. Not checked for completeness or tested, includes motor, parts canisters, many other pieces.

100/200

596. **Victor Bonnet Wind-Up Orange Vendor Toy.** Antique French figure with hand-painted features, original fabric clothing, pushing a metal fruit cart. Chipping and rust to finish, fabric soiled. With key. Height 7 1/4".

200/300



596

597

597. **Ferdinand Martin Wind-Up Violinist Toy "Le Gai Violiniste".** Antique French figure with hand-painted face, wire and metal parts, and fabric clothing. When wound, the figure's arm moves the violin bow across the instrument. Several paint chips and light fabric wear, but very good overall. 8" tall. Stamped "FM" logo to top hat.

400/600



598



599



600



601



602



603



604



605



608



609



607



606



610



611

598. **J. Chein Tin Litho Roller Coaster Carnival Toy.** American, ca. 1939. Two original cars, sides bearing carnival and sideshow imagery. Some scratches to finish, but clean and bright overall. 19" long.

100/200

599. **J. Chein Tin Litho Ferris Wheel Toy.** American, ca. 1939. Colorfully lithographed with carnival imagery, turning the key causes the wheel to turn and bell to ring. Height 16 1/2". Light surface scratches.

100/200

600. **Unique Art Li'l Abner Tin Litho Dogpatch Band Toy.** American, 1940s. Lithographed tin toy whose characters vibrate as if dancing or playing instruments when turned on. Original box (flattened, tape repaired).

200/300

601. **Unique Art Li'l Abner Tin Litho Dogpatch Band Toy.** American, 1940s. Lithographed tin toy whose characters vibrate as if dancing or playing instruments when turned on.

150/250

602. **Linemar Playful Pluto Wind-Up Toy.** Japan, 1950s. The figure nods his head and wags his tail when the key is turned. Partial tail (desiccated), partial original box.

100/200

603. **Marx Hootin' Hollow Haunted House.** New York: Marx Toys, 1950s. Tin litho battery-operated toy with levers at base controlling moveable and noise-making elements, only some of which were functioning when tested. An attractive example with minimal cosmetic wear.

300/500

604. **Marx B.O. Plenty Wind-Up Toy.** New York: Marx Toys, 1930s. Lithographed tin figure vibrates and tips his hat when wound. Original box. Height 9". Light scratches.

150/250

605. **Marx Pete the Parrot Toy.** New York, ca. 1962. Battery operated toy. Litho tin and fabric. With original box (well worn). 19" high. Clean and well-preserved; very good.

150/250

606. **Marx Dopey Snow White Walkers. Lot of Three.** Marx/Walt Disney, 1938. Three-wind up tin toys, all identical except for one having black shoes. Each with heavy paint losses.

200/400

607. **Daisy Red Ryder Model 40 Rifle With Original Box and Bullets.** Plymouth, Mich., ca. 1950s. No. 111, Model 40. Carbine repeater air rifle with metal, wooden, leather, and plastic parts, original pictorial box (end-flaps lacking). With seven tubes of Daisy-brand BBs.

200/300

608. **Alps Battery-Operated Picnic Bear.** Japan, ca. 1960s. Battery-operated panda bear figure pours himself a drink from a bottle, which label resembles a Pepsi. Original box. Clean fabric body, tin litho base. Original box.

100/150

609. **Rock Valley Toys Battery-Operated Circus Lion.** Japan, 1950s. The lion rears up and moves his arms before lowering himself and repeating the same motion. Lacks base blanket. Working.

60/90

610. **Cragstan Craps-Shooting Monkey.** Japan, 1950s. Fabric-covered battery-operated toy monkey who covers the dice cup then shakes out a pair of dice. Includes tin visor and dice.

50/100

611. **Captain Midnight Ovaltine Premiums and Ephemera.** Seven pieces total, including three red plastic cups; metal decoder badge; and three pieces of paper ephemera enclosed with premiums.

50/150



612

612. **Lone Ranger and Flash Gordon Premium Rings.** Including Lone Ranger Atomic Bomb Kix Cereal premium ring (1947); Lone Ranger signal flashlight ring (1940s); and Flash Gordon whistle ring (1953).

50/100



613

613. **Group of Four Vintage Tin Toys, Two Boxed.** Including a dog and cat chasing around a kennel (Japan, JYE; animals celluloid, both tails and one ear lacking); Twinkle Toes ballerina; Frankenstein Hand mechanical bank (Rosko); and a mechanical bank depicting a Hindu-styled magician (Joustra).

100/200



614

614. **Group of Vintage Wind-Up and Tin Toys.** U.S.A. and Japan, 1950s–60s. Including J. Chein Indian Chief; Linemar Androcles Lion; TPS Performing Seal and Monkey (lacking fish-pole attachment); Walking Bear (Occupied Japan); Modern Toys Bucking Bronco; Junior Police Handcuff and Whistle set (original pictorial cardboard backing); Casige Sewing Machine (faulty connection to platform); and Modern Toys Circus Seal (original box).

100/200



615

615. **Group of Snow White and the Seven Dwarves Toys and Figures.** Fifteen pieces, rubber, composition, and plastic figures by Knickerbocker, Crown, Ideal, and others. Including seven rubber dwarves, two hand puppets, two Dopey dolls, Dopey soap bottle, Doc ceramic figurine, and a hand-painted teacup, and a cardboard display of 12 toy watches. Size of largest 20".

200/400



616

616. **Lot of Five Vintage Tin Lithograph Toys.** Including Charlie McCarthy wobbler (Marx); Old Jalopy (Marx); G.I. Joe and Pups (Unique Art); a noise-making and moveable mooing cow; and moving-eyes white cat. Plus Little Orphan Annie Ovaltine mug (slight chip to rim).

200/300



617

617. **Marx Whoopee Cowboy Wind-Up Toy.** New York, ca. 1930s. Lithographed tin toy depicting a cowboy in an open-air automobile. Colors moderately faded, some paint losses. Length 8".

100/200



620



618

618. **Climbing Monkey Toys by Lehmann, Linemar, and Marx.** Four tin toys, two with original boxes. Lehmann box worn, one Marx monkey in need of restringing.

150/250

619. **Wyandotte Lithographed Tin American Airlines City Airport.** Circa 1940s. Colorful lithographed tin airport with two hangars, runways, and battery-operated control tower. With a red Wyandotte biplane. 10 1/2 x 15 1/2 x 11 1/2". Very good with some scratches and paint loss, mainly to runway and at base.

200/300

620. **Hanging Display Board of "Do It Yourself" Puzzle Kits.** Circa 1960s. Cardboard display board with a complete set of 24 stapled packets containing multi-colored plastic pieces that assemble into various toys.

80/125



621



622



623

621. **Tri-Play Toys Spectacular Talking Baseball Game.** Chicago, ca. 1960s. Magnificently preserved in the original pictorial box, including playfield, an un-punched sheet of red and blue player figures, built-in phonograph and record discs, game pieces, and instructions. Overall 18 1/2 x 18 x 4".

200/300

622. **Ideal No. 5 Cast Iron Toy/Salesman's Sample Stove.** Circa 1890s. Cast iron and tin stove, having three hinged doors, six burners, intricate scroll designs, removable side shelf lettered "Ideal No. 5," and five cast iron accessories. Overall 17 x 19 x 10 1/2". One pin-hinge broken off, scattered tarnish.

250/500

623. **Cast Iron Wilkins Paddle Wheel Steamboat.** Circa early 20th century. Painted steamboat push toy. 15 1/2 x 5 1/2 x 3". Scattered re-painting, "City of New York" re-lettered.

200/300

624. **Group of Antique Cast Iron Toys and Banks.** Circa 1900s. Including a train engine and coal cart set; rooster; farm tractor; and lion. Good.

100/150



625



626



627



628



629

625. **Antique Child's Rocking Horse on Stand.** German [?], ca. 1880s. Genuine hide-covered body with white and brown spots, horsehair mane and tail, glass eyes, hide-covered composition ears and mouth with hand-painting, red leather saddle and reins. Figure 41 x 37 x 11". Recently restored to excellent condition.

1,500/2,500

626. **Marx Battery-Operated Stutz Bearcat Roadster.** New York, 1960s. Red-bodied plastic classic sports car with metal fixtures. Original box, cardboard insert, instructions and spare tire. 38 x 15 x 12". Rubber horn desiccated, dusty from storage, otherwise very good.

300/500

627. **Vintage Fire Engine No. 23 Pedal Car.** Pressed metal fire engine pedal car, with bell and rear hooks (lacking ladders) lettered "F.D. No. 1/Eng. 23". 36 x 16 x 18". Some parts rusted, body with scattered dents, front tires misaligned; in need of cleaning and restoration.

100/200

628. **King-Seely Ringling Brothers and Barnum and Bailey Circus Lunchbox and Thermos.** Norwich, Conn., 1970. Colorful vinyl lunchbox and pictorial metal Thermos complete with inner and outer caps. 9 x 6 3/4". Very good.

100/150

629. **Lot of Six Tin Litho Vintage Circus Toys.** Including four clowns in a hand-stand pose (marked Chein, "Made in Great Britain", "U.S. Zone—Germany" [lacking key], and one with box marked by A. Wells [Great Britain]); plus "Gay 90's Cyclist (Japan, TRS; cycle lacks handlebar rod); and a clown car (Japan, Yone). Signs of play-wear to some, but good overall. Box lacks closing flaps.

150/250



630



632



635



631



634



633



636

630. **Group of Vintage Magic and Circus-Themed Toys.** Including Clown the Magician (ALPS; battery-operated, not tested, hat present but detached at hand); Fips Trained Dog (HK-574, with box and key, working); and two Magician mechanical banks (Book of Knowledge).

100/150

631. **Collection of Vintage and Contemporary Circus-Themed Toys and Novelties.** Including ERTL Clyde Beatty-Cole Bros. boxed diecast circus set; a vintage wooden clown marionette; Emmett Kelly Personality Doll (head nearly detached, stuffing exposed); two sealed Keystone Circus Electric Train sets; and a quantity of contemporary Chinese wind-up toys including clowns and elephants.

150/250

632. **Group of 10 Outer Space-Themed Transfer Picture Displays.** Japan: M.P. & Co., ca. 1960s. Ten different cardboard placards to which are stapled sheets of transfer pictures on the theme of space exploration. Each 14 x 4 1/2". Overall very good with some corner wear.

150/250

633. **Group of Vintage Futuristic and Space-Themed Toys.** 1950s—80s. Including Space Ship Water Shot water pistols (two, both with original packaging); D.S. Williams Space Skates (original packaging); The Jetsons Dinnerware Set (original box); and Tom Corbett Space Cadet Aladdin Thermos.

150/250

634. **Pez Dispenser Ray Gun and Space Trooper.** Austria, 1950s. Red-bodied pistol with blue loader, white caps; and blue space trooper. Both marked "Made in Austria." Scarce. Trooper's head-hinge needs repair, otherwise good.

200/300

635. **Collection of Over 60 Space and Ray Gun Toys.** Hong Kong, Japan, China, and U.S.A., various dates. Mainly water pistols, manufacturers include Palmer, Renewal, Arliss, Barton, and others, plastic and pyro examples in a variety of colors. Some friction and clicking models, with others in original packaging. Overall condition good.

200/400

636. **Magic Color Moon Express Battery-Operated Toy.** Taiwan, 1970s. Lithographed tin and plastic. Original pictorial box with scattered tears. 14" long. Working.

100/200



637



638



639



640



641



642



643

637. **Ideal Alien Pilots Blue Water Pistol.** Germany, 1950s. Translucent blue plastic water pistol with alien pilots internally. Replica box. Unobtrusive light scratches to body, otherwise very good.

80/150

638. **A Dozen Vintage Space Gun Toys.** Japan, Hong Kong, China, ca. 1970s/80s. Plastic and tin litho friction guns and water pistols. One in original packaging.

80/150

639. **Lot of Vintage Space Navigator Pins With Cards.** Japan, ca. 1960s. Approx. 45 identical pot metal pins on pictorial cards, a few removed from cards. Cards showing some corner wear.

50/100

640. **Group of Four Vintage NASA/Space-Age Toys and Kits.** 1960s. Including Nomura Apollo 11 Space Rocket (original box); Holdraketa Space Rocket (original box, side fin slightly loose); Airfix Apollo Lunar Module kit; and Revell Apollo 11 Tranquility Base kit (sealed).

100/200

641. **Sonicon Rocket Battery-Operated Toy.** Japan, ca. 1960s. Lithographed tin and plastic, with antenna attachment and black whistle. 14" long. Brightly colored example, well preserved with clean battery compartment.

250/350

642. **Pop Ray 33 Repeater.** Wyandotte: All-Metal Productions Co., ca. 1930s. Painted steel toy pop gun. 7" long. General wear and some oxidation affecting paint, particularly at the base of the body. Fair.

50/100

643. **Tomy Zoids King Gojulas RPZ-24.** Japan, 1989. Original Japanese release, unused in original box. Light wear to box at corners. 22 x 14 x 9".

800/1,200



644

644. **Tomy Zoids Salamander RPZ-01.** Japan, 1983. Original Japanese release, unused in original box. Light wear to box at corners. 12 1/2 x 10 x 4".

300/500

645. **Tomy Zoids Gungyarados DPZ-23.** Japan, 1989. Original Japanese release, mint in original packaging. Light wear to box at corners. 13 x 10 x 6 1/4".

150/250

646. **Yonezawa Safari Robo Technica Change.** Japan, 1984. As-new with original box and fitted Styrofoam. 11 3/4 x 6 1/2 x 6 1/4".

80/150

647. **Pair of 1970s Bandai Vinyl Robots.** Circa 1970s. Vinyl robot figures marked "Japan" to underside with Japanese lettering, the Mach Baron figure stamped with the Bandai logo. Height 10 1/2". Scattered paint losses and scuffs. 1

80/125

648. **Group of Three Bandai Godaikan Toys.** Japan, 1984. Original releases in boxes, including Vavilos [2] and Gardian (lacking one accessory). Instructions, fitted Styrofoam inserts. Boxes show light edgewear.

200/300

649. **Lot of Six Vintage Robot Toys.** Including Space Walk Man ME100 (original box lid and Styrofoam); Tomy Zoids Wardick kits [2]; ROM robot with jet-pack and shield; Azrak-Hamway Zeroid knockoff robot (original packaging); and Bandai Chogokin GT-05 Mr. Gantz.

100/200

650. **Group of Vintage Robot Toys by Bandai and Others.** Hong Kong and Japan, 1980s. Including Bandai Kuuma Houraio; Zork and Tark (Art No. 789698/798699); Bandai Machine-Robo Series MR-06, MR-10, MR-19, and MR-36; and Tomcat Robo Super Mechanic. Original boxes.

100/200



645



646



647



648



649



650



651

651. **Lot of Vintage Premium Rings.** Approximately 50 pieces, metal, enamel, plastic, some lenticular, and others, some in a fitted hardshell case, the others loose, including James Bond 007, Buck Rogers, Mickey Mouse, U.S. Navy, Radio Orphan Annie, Green Hornet, The Munsters, and others. Some duplication.

100/200



652

652. **Group of Vintage Baseball-Themed and Other Games.** Includes Pla-Ball (Play-Ball), Winko Baseball, Black Beauty, Tiddledy Ring Game, Charlie Brown's All Stars, Line Drive, and others. Largest 31 x 10 x 10". Some boxes heavily worn; a group, sold as is.

50/100



653

655

653. **Jocko the Drinking Monkey.** Japan: Linemar, ca. 1955. Battery-operated tin litho toy with fabric coverings. His eyes light up, Jocko pours himself a drink, and takes a gulp. 10 1/2" tall. Some scratches to paint, oxidation, and soiling to fabric. Working. Good.

80/150

654. **Three Japanese Tin Litho Motorcycle Toys.** 1950s–60s. Including a military policeman (5" long); Thunderbird racer with the number "77" (5 1/2" long); and one other (3" long). All with light soiling and scratches. All working well. Very good.

100/200



654

655. **Police Patrol Motorcycle.** Japan: Usagiya, 1960s. Friction operated tin litho toy of a police patrolman, lettered "P.D. 512." 9 1/2 x 7 1/2". Light scratches. Working. Very good.

100/150



656

657

656. **Snake Charmer.** Japan: Linemar Toys, ca. 1960. Tin litho toy with fabric covering, depicting a snake charmer who bobs back and forth while playing his instrument for the snake in the basket. Original basket and snake. 7 x 4 x 7 1/2". Some soiling on fabric, few scratches to paint on charmer's face. Working. Very good.

150/250

657. **Dentist Bear.** Japan: S&E, 1950s. Battery-operated toy with a tin litho base. The dentist bear, standing next to a crying baby bear in chair, has a light up hand drill pointed at baby bear's mouth. Scratches and oxidation to paint, dentist missing right hand to hold drill. Working. Good.

100/200



658

658. **Champion Weightlifter Toy.** Japan: Yano Man Toys, 1960s. Battery-operated with plastic, fabric and rubber face. Original box. 9" tall. Box scuffed, toy has minor wear. Working. Very good.

80/125

659. **Two Tin Litho Toy Trucks.** 1930s. Including a French fire engine with tires marked "Dunlop" (6 1/2" long); and a Marx F. 64 wind-up truck (5" long). Both with light oxidation and scratching. Good.

50/100



659

660. **Jumbo the Bubble Blowing Elephant.** Japan: Yonezawa, ca. 1950. Battery-operated cloth elephant with tin litho base that blows bubbles from cup. Includes cup. 7 x 4 x 7 1/2". Cloth browned at feet and trunk, light soiling and scratching. Not tested. Good.

50/100



660

661

661. **Ball Playing Dog Toy.** Japan: Linemar, 1950s. Battery-operated tin litho with fabric. 9" tall. Wear to fabric on hat, eyes offset, slight fraying of fabric. Not tested. Good.

50/100

662. **Fisher Price Space Blazer Pull Toy.** East Aurora, New York: Fisher Price, 1950s. Wooden, drawstring pull toy with metal bell, plastic cockpit, and wire antenna. Serial number 750 with Fisher Price hallmark. 14 1/2 x 3 3/4". Light wear to edges. Very good.

150/200



662

663. **Group of Ten French Table Top Games and Puzzles.** France, ca. 1930s. Including Mon Cousin Tireliboudin (4 x 4 x 1"); Porte-Veine Jeu Amusant (4 3/4 x 3 1/4"); Jeu De La Puce (5 x 3 1/2"); L'Anneau Nuptial (3 1/2 x 3 1/4"); Jeu des Araignees et de la Mouche (8 1/4 x 4"); Le Disque (5 1/2 x 5"); Kohinoor (6 1/2 x 4 3/4"); Le De Recalcitrant (3 x 3"); Dominos (6 1/4 x 2"); and Jeu De Foot Ball (9 1/2 x 7"). Condition generally good with scuffs, fading and tears to boxes.

150/250



663

664. **Two Vintage Automotive Toys.** 1950s. Including Hubley Road Scraper (11 x 5 x 3 1/2"); and Wen-Mac Automite Engine Powered Racing Car (10 x 5 x 3"). Original boxes with some creases and wear.

80/125



664

665. **Five Danbury Great American Steam Locomotives.** Norwalk, 1980s-1990s. Including Dewitt Clinton 1831, J-Hudson 1927, General Circa 1855, No. 999 Circa 1893, and Hiwatha 1935. Pewter with wooden platforms bearing plaques. Longest 11". Slight soiling, else very good.

50/150



665



666



672



673



677



674



678



675



679



676

676. **Four Vintage Automotive Toys.** 1950s. Including Tootsie Toy Auto Transport No. 207; Ranger Mechanical Truck and Trailer Fleet; Ranger Motor Express Mechanical Truck and Trailer Set; and Tootsie Toy No. 24. Auto transport toy 20" long. Packages worn, trucks with minimal wear. Good.

100/150

673. **Lionel No. 200 Turntable, No. 517 Caboose, and No. 512 Gondola.** Pre-war standard gauge, each with moderate paint losses, scratching, and oxidation.

80/125

677. **Two Cast Iron Horse Drawn Wagon Toys.** 1930s. Including Kenton Overland Circus horse drawn wagon with removable driver (14" long); and Arcade Mfg. Co. yellow horse drawn wagon with driver. Chipped paint, slight soiling.

150/250

674. **Lionel No. 390E Locomotive and 390T Tender Set.** Concord, N.C., 1931. Locomotive features red detailing on wheels and front grate. 22" long. Repainted with one replacement part. Paint rubbed on edges, heavy dusting. With two bags of artificial coal and smoke pellets.

100/200

678. **Prewar American Flyer Locomotive and Tender.** New Haven: The A.C. Gilbert Co., 1900s. Wide-gauge 4695 steam locomotive, with a 4663 diecast tender with super tight casting fatigue to body. Small modern repair on locomotive, chipped paint, minor soiling. Very good.

200/400

675. **Lionel Prewar Standard Gauge Set 352 with 10E Locomotive.** Concord, N.C., 1920s. Including 10E locomotive, 341 Observation car, 339 Pullman car, and two lengths of track. 332 Baggage car missing. Original paint in scarce grey color. Each car 11" long. Paint rubbed and chipped, somewhat dusty. Very good.

150/250

679. **Pair of Marx Tin Litho Transportation Toys.** New York, 1930s. Including Marx City Airport featuring the Trans American Airways logo; and Blue Bird Garage Gas Station. 12" long. Paint chipped, soiling, scratches, lacking accessories. Very good.

100/200

666. **Singer 20 "Sew Handy" Toy Sewing Machine.** Boston: Singer, 1926. Cast iron body, hand crank and tension discs. Numbers stamped to demonstrate threading path. 7" tall. Chips to paint, slight rust and soiling, missing base. Working. Very good.

50/100

667. **Two Antique Automotive Toys.** Circa 1930s. One cast iron toy car with a yellow body and one tin litho toy car with a green body. Tin car is 12" long. Significant chips to paint on tin car, cast iron car lightly worn. Good.

100/150

668. **Two Buddy L Toy Trucks.** East Moline, Ill., 1920s. Two black-bodied pressed steel trucks. Both 11" long. Moderate chips to paint with some rust. Partial labels to underside. Good.

200/300

669. **Buddy L Chain Operated Dump Truck.** East Moline, IL: Buddy L, 1923. Tin litho chain operated dump truck with hinged tailgate and decal on front. 24" long. Heavily soiled, paint significantly chipped. Working. Good.

150/250

670. **Buddy L Hydraulic Dump Truck.** East Moline, IL: Buddy L, 1926. Tin litho hydraulic dump truck with hinged tailgate. 23" long. Paint significantly worn, moderate rust and heavy soiling. Working. Good.

150/200

671. **Two Kenton Sand and Gravel Wagons.** 1920s. Cast iron dump wagon pulled by two horses with driver. Green wagon 14 1/2" long. Green wagon repainted. Paint chipped, slight soiling. Very good.

100/150

672. **Lot of Hubley Kiddie Toy Trucks.** Lancaster, Penn., 1950s. Including #460 Tow Truck, #454 Log Truck, #461 Pick-Up Truck, #466 Air Compressor, Telephone Truck, #460 Pick-Up Truck, and #3 Dump Truck. Largest 8" long. Packaging browned and heavily worn with some missing flaps, trucks with minor wear. Very good.

100/200



667



668



669



670



671



680



684



681



685



682



686



683



688



687



689



690



691



692



693

680. Group of Tin Litho Toy Trains. 1930s–40s. Including GNR German made coach car; Basset-Lowke LNWR car; Hornby LMS 2270 locomotive; and Interreg LMS car. Paint chipped and rubbed, scratches. Good.

150/250

681. Marx Wind-Up Tank Tin Litho Toy. 1940s. Wind-up the tank from which a sharpshooter emerges as the tank gun spits sparks. 10" long. Working. Some chips to finish, else very good.

80/125

682. Four-Piece Ives Cast Iron Floor Train Set. 1860s. Locomotive with three red cars. Original paint, moderately chipped. Very good.

150/250

683. Dinky Toys Dodge Royal Sedan. Liverpool, England: Meccano Ltd., 1959–64. No. 191 Dodge Royal Sedan model with windows. Original box. 5" long. Box worn and missing flaps, car excellent.

50/100

684. Two Tin Litho Greyhound Buses. Mid-century Japanese friction Greyhound "Scenicruiser" buses. Larger cruiser 13" long. Working. Windows cracked, paint slightly chipped, soiling. Good.

100/150

685. Vintage Gilbert Erector Set. Westville, Conn.: A.C. Gilbert Co., 1954. Complete all electric erector set. Original box. Motor working. Box worn and soiled, interior contents very good.

100/150

686. Two Vintage Chemistry Sets. Including Chemcraft Junior Deluxe Outfit No. 412 (1953); and Gilbert Microscope and Lab Set (1938). Original boxes and supplies. Vials in both sets retain original contents. Gilbert set 14 1/2 x 10 x 4". Boxes worn, interior contents lightly soiled. Very good.

100/150

687. Buddy L Van Freight Carriers Trailer. Moline, Ill., 1950s. Yellow freight trailer pulled by blue pick-up truck. 19 1/2" long. Small chips to paint, dusting. Very good.

150/200

688. Biller Patent Tin Litho Clam Bucket Excavator. West Germany, 1950s. Fully operational excavator with Biller Patent logo on side. Small spots of rust, dusting. Very good.

100/200

689. Lionel Prewar Standard Gauge No. 8 Locomotive Set. Concord, N.C., 1920s. Set includes No. 8 locomotive, No. 36 Observation car and No. 35 Pullman car. Original paint in maroon. Each car 11" long. Paint rubbed and chipped, light dusting. Very good.

200/250

690. George Washington Wood Folk Art Toy. Waterville: L.V. Wehmeier, n.d. 21 x 16 x 10". Very good.

200/400

691. Pair of Star Wars Lunch Boxes. Including a Star Wars lunchbox and Thermos, several minor dents and a few scratches; and a Return of the Jedi (1983) lunch box and Thermos. Sold With a Darth Vader belt buckle.

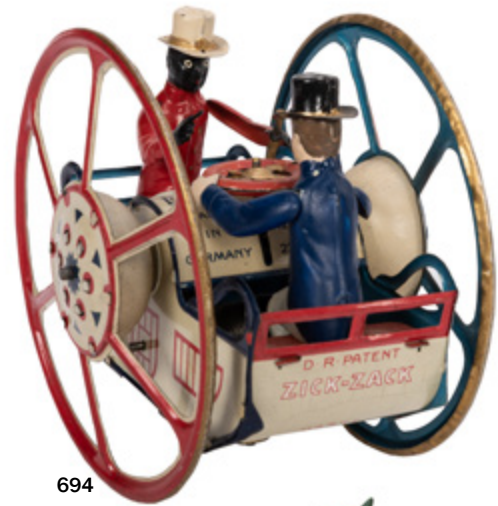
200/400

692. Superman and Roadrunner Lunch Boxes and Thermoses. Including a 1967 Superman lunch box with Thermos, paint loss around rim but strong colors and graphics; and a 1973 Roadrunner lunch box with Thermos. Rust on one bottom panel and top.

400/600

693. Mini Derby Battery Operated Horse Race Game. Japan, ca. 1950. Mint in box, appears unused. 8 3/4 x 4".

50/100



694



698

BLACK REPRESENTATION IN TOYS & ADVERTISING

694. **Lehmann 640 Zick-Zack / Zig-Zag Tin Wind-Up Toy.** German, ca. 1910s. Lithographed tin with hand-painting, clockwork mechanism, figures rocking back and forth. Brightly colored and well-preserved.

800/1,200



695

695. **Lehmann Dare Devil Toy.** German, ca. 1910s. Clockwork toy depicting a black driver at the reigns of a zebra-striped donkey. Length 7". Lacks harness. Not functioning.

200/300



696

697

696. **Marx Hey-Hey The Chicken Snatcher Wind-Up Toy.** New York, ca. 1930s. Lithographed tin figure whose body and head shakes and wobbles side to side. Lacking the dog attachment. Height 9". Scattered paint losses and rust marks. Marked by Marx on the feet under-soles.

250/450

697. **Fisher Price Hot Diggity / Hot Mammy Wind-Up Toys.** East Aurora, N.Y., ca. 1930s. Wind-up figures with exaggerated metal foot-plates, fabric clothing and hair. Height 6 1/2". Fabric tears and minor soiling.

300/500



699

700

698. **Ferdinand Strauss Tip-Top Porter Toy.** New York, ca. 1910s. Wind-up tin toy depicting a black porter pushing a cart. Original box (one closing flap detached). Height 6". Some paint losses to hat, other light scratches.

200/300

699. **Ferdinand Strauss Tombo The Alabama Coon Jigger.** New York, ca. 1910. Wind-up tin lithographed toy depicting a black tap-dancer on a rectangular stage. Height 10 1/2". Marked and patented by the maker to underside. Minor paint flaking.

300/500

700. **Lehmann "Oh My" Alabama Coon Jigger.** German, ca. 1910. Wind-up tin lithographed toy depicting a black tap-dancer on rectangular base. Height 10 1/2". Marked and patented to underside. Moderate oxidation and paint losses, lacking cane attachment.

300/500



701

701. **Jazz-Bo Jim Tin Wind Up Toy.** New York: Ferdinand Strauss Co., 1921. Jazz-Bo Jim "The Dancer on the Roof" dances atop roof of a house once wound. 10" tall. Paint rubbed and chipped, some rust. Lacks connector stem. Working. Very good.

100/200



702

702. **J. Chein No. 145 Mechanical Turtle.** American, ca. 1940. Lithograph tin toy depicts a "native" driving an oversized turtle. Length 8". A colorful and well-preserved example, scattered discoloration and oxidation.

80/125



703

703. **Cast Iron Mule-Drawn Coal Cart With Black Rider.** Kenton/Hubley [?], ca. 1890s. Painted cast iron toy depicting a black man driving a coal cart drawn by a mule, a wheel screwed to the left front hoof, yoke unhooks to dump contents. 13" long. Moderately chipped finish.

200/300



704

704. **J. & E. Stevens Co. "I Always Did 'Spise a Mule" Jockey Toy.** Circa 1880s. Painted mechanical cast iron toy, inserting a coin into slot and depressing the button throws the jockey forward into a log. Length 9 1/2". Parts repainted, brown base, darkened, with losses to jockey's helmet and elsewhere. Patent dates stamped to underside. Sales History: Sotheby's New York, retaining lot tags.

900/1,300

705. **J. & E. Stevens Cast Iron Cabin Bank.** Circa 1880s. Painted cast iron toy bank, figure in doorway turns upside-down to release coins by the broom lever. With coin trap. Height 3 1/2". Some repainting.

100/200



705

706

706. **Jumbo Salted Peanuts 10 Pound Tin.** Boston: Kelly Peanut Co./Wilkes-Barre Can Co., early 20th century. Lithographed tin with graphics to both sides, original printed lid. Scrapes, losses, and several dents, but good overall.

300/400



707



711

707. **Dixie Kid Cut Plug Tobacco Tin / Lunchbox.** Louisville, Ky., early twentieth century. Lithographed tin box with latch and handle. 7 1/2 x 5 x 4 1/4". Several small dents, rubbed edges, scattered scratches.

200/300

708. **N***** Hair / Bigger Hair Tobacco Canisters.** Milwaukee: B. Leisendorf Co., 1920s. Tin and cardboard examples, the first with the original racial epithet title, showing of a Fiji Islander to both sides, the latter with partial tax label dated 1926 affixed. Height 6 1/2".

500/700

709. **Lux Dixie Boy Pendulette Wall Clock.** Waterbury, Conn., ca. 1930. Serial Number D-90919. Molded wood face. Including key and pendulum. Does not wind. Overall height 8 1/2". Paint loss to hands, otherwise very good.

100/200

710. **Lot of Two Black Americana Advertising Containers.** Including Mammy's Favorite Brand Coffee tin (11" high, heavily scratched and soiled); and Zetz 7-Up Bottling Co. seltzer bottle (12" high).

100/200

711. **Black Americana Nodder Ashtrays and Desk Items. Lot of Five.** Three nodder ashtrays depicting boys with cigars; a cast iron Johnny Griffin desk/wall clip; and figural cast iron dish. Each approx. 4" at widest or tallest point.

100/200

712. **Black Americana Clocks and Advertising Items. Lot of Seven.** Including Little Black Sambo alarm clock; Gold Dust Washing Powder clock and tin (unopened); J.P. Alley's Hambone Sweets cigar ads [2]; Coon Chicken Inn mug and saucer; and cotton napkin.

200/300

713. **Fairbank's "Gold Dust" Washing Powder Box.** Cambridge: Lever Brothers Company, ca. 1930. Unopened box of Gold Dust washing powder.

50/100



708

709



712



710

713

END OF SALE



ABSENTEE/TELEPHONE BID FORM

TELEPHONE BID ABSENTEE BID

Name _____

Primary Phone _____

Business Name (If Applicable) _____

Secondary Phone/FAX _____

Billing Address _____

E-mail Address _____

City/State/Zip _____

Lot Number	Description	U.S. Dollar Limit (Exclusive of Buyer's Premium)

For absentee bids, indicate your limit for each lot, excluding the Buyers' Premium. Your bids will be executed at the lowest prices allowed by reserves and other bids. If more than one bid of the same value is received, the first bid received will take precedence.	I authorize Potter & Potter Auctions to bid on my behalf up to the amount(s) stated above. I agree that all purchases are subject to the "Terms & Condition of Sale" as stated in the sale catalogue and that I will pay for these lots on receipt of invoice.
- "+" bids indicate willingness to go up one increment if needed to break a tie. "Buy" or unlimited bids are not accepted. -References and/or a deposit are required of bidders not known to Potter & Potter Auctions, Inc. -A buyer's premium of 20% per lot is payable on each successful bid.	SIGNATURE _____ DATE _____
Potter & Potter is not responsible for failure or other inadvertent errors relating to execution of your bids. THE AUCTIONEER'S DECISIONS ARE FINAL.	FOR POTTER & POTTER _____ DATE _____

Bids may be executed via fax: 773-260-1462, mail (address below), or email: potterauctions@gmail.com until 5:00 PM (CDT) on the last business day immediately preceding the sale. *Bidding will then be closed to fax and email.*

Potter & Potter encourages you to mail, fax and email bids, as telephone operators are limited, and telephone bidders will be served on a first come, first served basis.

POTTER & POTTER AUCTIONS, INC.
3729 N. RAVENSWOOD AVE., SUITE 116, CHICAGO, IL 60613
PHONE: 773-472-1442 / FAX: 773-260-1462
www.potterauctions.com

CONDITIONS OF SALE

The lots listed in this catalogue (whether printed or posted online) will be offered at public auction by Potter and Potter Auctions, Inc., as agent for consignor(s) subject to the following terms and conditions. By bidding at auction you agree to be bound by these Conditions of Sale.

PRIOR TO THE SALE

Please examine lots. Prospective buyers are strongly advised to “in person” or by personally retained Agent, examine any property in which they are interested before the auction takes place. Condition reports may be provided if requested in a timely manner.

Condition of lots, Warranties and Representations - All lots are sold “AS IS” and without recourse, and neither Potter and Potter Auctions, Inc. nor its consignor(s) makes any warranties or representations, express or implied with respect to such lots. Neither Potter and Potter Auctions, Inc. nor its consignor(s) makes any express or implied warranty or representation of any kind or nature with respect to merchantability, fitness for purpose, correctness of the catalogue or other description of the physical condition, size, quality, rarity, importance, medium, material, genuineness, attribution, provenance, period, source, origin, completeness, historical significance of any lot sold. The absence of any reference to the condition of a lot does not imply that the lot is in perfect condition or completely free from wear and tear, imperfections or the effects of aging. No statement, whether written or oral, and whether made in the catalogue, or in supplements to the catalogue, an advertisement, a bill of sale, a posting or announcement, the remarks of an auctioneer, or otherwise, shall be deemed to create any warranty, representation or assumption of liability. Potter and Potter Auctions, Inc. and its consignor(s) make no warranty or representation, express or implied, that the purchaser will acquire any copyright or reproduction rights to any lot sold.

AT THE SALE

Registration Before Bidding – A prospective buyer must complete and sign a registration form and provide identification before bidding. We may require bank or other financial references. Potter and Potter Auctions, Inc., is under no obligation to approve the registration of any prospective registrant.

Bidding as Principal – When making a bid, a bidder is accepting personal liability to pay the purchase price, including the buyer’s premium, all applicable taxes and all other applicable charges, unless it has been explicitly agreed upon in writing with Potter and Potter Auctions, Inc. before the commencement of the sale that the bidder is acting as agent on behalf of an identified third party acceptable to Potter and Potter Auctions, Inc., and that Potter and Potter Auctions, Inc. will only look to the principal for payment.

Absentee Bids – Potter and Potter Auctions, Inc. will use reasonable efforts to carry out written bids given to us prior to the sale for the convenience of clients who are not present at the auction in person. Bids must be placed in U.S. dollars. If we receive written bids on a particular lot for identical amounts, and these are the highest bids on the lot at the auction, it will be sold to the person whose written bid was received and accepted first. Execution of written bids is a free service undertaken subject to other commitments at the time of the sale and Potter and Potter Auctions, Inc. does not not accept liability for failing to execute a written bid or for errors and omissions in connection with such written bid(s).

Telephone Bids – If a prospective buyer makes arrangements with us prior to the commencement of the sale we will use reasonable efforts to contact said prospective buyer to enable them to participate in the bidding by telephone and we do not accept liability for failure to do so or for errors and omissions in connection with telephone bidding.

Bidding Increments - Expected bid increments are as follows:

Min Value	Max Value	Increment
\$0.00	\$29.00	\$5.00
\$30.00	\$99.00	\$10.00
\$100.00	\$499.00	\$25.00
\$500.00	\$999.00	\$50.00
\$1000.00	\$1,999.00	\$100.00
\$2,000.00	\$5,999.00	\$200.00
\$6,000.00	\$9,999.00	\$500.00
\$10,000.00	\$19,999.00	\$1,000.00
\$20,000.00	\$49,999.00	\$2,000.00
\$50,000.00	and above	10% of current bid

Note: the auctioneer may modify the increments at any time.

Reserves – Although the majority of the lots in the sale are offered without reserve, some lots in the sale may be subject to a reserve which is the confidential minimum price below which such lot will not be sold. The reserve will not exceed the low estimate of the lot. Reserves are agreed upon with consignors or, in the absence thereof, the absolute discretion of Potter and Potter Auctions, Inc. The auctioneer may open the bidding on any lot below the reserve by placing a bid on behalf of the seller. The auctioneer may continue to bid on behalf of the seller up to the amount of the reserve, either by placing consecutive bids or by placing bids in response to other bidders. With respect to lots that are offered without reserve, unless there are already competing bids, the auctioneer, in his or her discretion, will generally open the bidding at half of the low estimate for the lot. In the absence of a bid at that level, the auctioneer may proceed backwards at his or her discretion until a bid is recognized, and then continue up from that amount.

Auctioneer’s Discretion – The auctioneer has the right at his or her absolute and sole discretion to refuse any bid, to advance the bidding in such a manner as he or she may decide, to withdraw any lot, and in the case of error or dispute, and whether during or after the sale, to determine the successful bidder, to continue the bidding, to cancel the sale or to reoffer and resell the item in dispute. If any dispute arises after the sale, our sale record is conclusive.

Successful Bid – The highest bidder acknowledged by the auctioneer will be the purchaser. In the case of a tie bid, the winning bidder will determined by the auctioneer at his or her sole discretion. In the event of a dispute between bidders, the auctioneer has final discretion to determine the successful bidder or to reoffer the lot in dispute. If any dispute arises after the sale, the Potter and Potter Auctions, Inc. sale record shall be conclusive. Title passes upon the fall of the auctioneer’s hammer to the highest acknowledged bidder subject to the Conditions of Sale set forth herein, and the bidder assumes full risk and responsibility.

AFTER THE SALE

Buyer’s Premium – In addition to the hammer price, the buyer agrees to pay Potter and Potter Auctions, Inc. a buyer’s premium of 20%, and the applicable sales tax added to the final total.

Payment – The buyer must pay the entire amount due (including the hammer price, buyer’s premium, all applicable taxes and other charges) no later than 5 p.m. on the seventh (7) business day following the sale. Payment in U.S. dollars may be made with cash; bank check or cashier’s check drawn on a U.S. bank; money order; or wire transfer unless other arrangements are made with Potter and Potter Auctions, Inc. Potter and Potter Auctions, Inc. reserves the right to hold merchandise purchased by personal check until the check has cleared the bank. The purchaser agrees to pay Potter and Potter Auctions, Inc. a handling charge of \$50 for any check dishonored by the drawee. In the event buyer desires to pay by using a credit card, a convenience fee equaling 2.5% of the entire amount due shall be added to the buyer’s invoice.

Shipping Terms - By Potter & Potter. Choice of packing and shipping method is strictly at the discretion of Potter and Potter Auctions. P&P generally provides in house shipping via FedEx or USPS to winning bidders. Please allow 3–4 weeks for delivery.

Third-party shipping. Certain large, high-value, and fragile items will require the services of professional packing and transportation, or pick-up directly from our gallery. We suggest that you contact our Shipping Department before the sale for advice on the shipping and handling requirements that apply to the lots of interest to you.

If third-party shipping is chosen by the buyer or required by Potter & Potter, the buyer will arrange for removal of the merchandise from P&P within 15 days following the sale and must communicate and coordinate removal arrangements with P&P during regular business hours (Monday – Friday, 9am – 5pm).

Arrangements for third-party transportation are the responsibility of the buyer. We will not be responsible for the acts or omissions of carriers and packers whether recommended or not by us. Property will not be released to the shipper without the buyer’s written consent and until payment has been made in full. Unless otherwise agreed, all purchases should be removed by the 15th day following the sale.

Risk of loss or damage in shipment. Any risk of loss or damage to the shipment through a third party carrier, once the item is removed from Potter and Potter, is at the risk of the buyer, and Potter & Potter is not liable for loss or damage of these items.

Ship to address. The winning bidder is responsible for providing Potter & Potter with an accurate address for the order destination as well as specific instructions for delivery.

Shipping costs. Shipping costs include charges for labor, materials, insurance, as well as actual shipper’s fees. Buyer agrees to reimburse Potter & Potter the difference if actual shipper’s fees exceed the invoice amount. Storage fees. Potter & Potter will charge a storage fee of \$50 per week for any orders awaiting payment and/or removal for more than 15 days following the auction date. This cost shall constitute a lien against such property, which may be removed to a public warehouse at the risk, account, and expense of the purchaser.

International shipping. Potter and Potter ships internationally. All shipments will include an itemized invoice with the actual and correct purchase totals including the buyer’s premium and shipping cost. International buyers are responsible for knowing their country’s laws on importing items as well as paying all customs and duties fees on purchased items.

Non-Payment – If we do not receive payment in full, in good cleared funds, within seven (7) business days following the sale, we are entitled in our absolute discretion to exercise one or more of the following measures, in addition to any additional actions available to us by law: (1) to impose a late charge of one and a half percent (1.5%) per thirty (30) days of the total purchase price, prorated to commence on the date of the sale; (2) to hold the defaulting buyer liable for the total amount due and to begin legal proceedings for its recovery together with interest, legal fees and costs to the fullest extent permitted under applicable law; (3) to rescind the sale; (4) to resell the property publicly or privately with such terms as we find appropriate; (5) to resell the property at public auction without reserve, and with the purchaser liable for any deficiency, cost, including handling charges, the expenses of both sales, our commission on both sales at our regular rate, all other charges due hereunder and incidental damages. In addition, a defaulting purchaser will be deemed to have granted us a security interest in, and we may retain as collateral security for such purchaser’s obligations to us, any property in our possession owned by such purchaser. At our option, payment will not be deemed to have been made in full until we have collected funds represented by checks, or in the case of bank or cashier’s checks, we have confirmed their authenticity; (6) to offset against any amount owed; (7) to not allow any bids at any upcoming auction by or on behalf of the buyer; (8) to take other action as we find necessary or appropriate.

LIABILITY

Condition Reports – Potter and Potter Auctions, Inc. is not responsible for the correctness of any statement of any kind concerning any lot, whether written or oral, nor for any other errors or omissions in description or for any faults or defects in any lot. Neither the seller, ourselves, our officers, employees or agents, give any representation, warranty or guarantee or assume any liability of any kind in respect of any lot with regard to merchantability, fitness for a particular purpose, description, size, quality, completeness, condition, attribution, authenticity, rarity, importance, medium, provenance, prior ownership history, or historical relevance. Except as required by local law any warranty of any kind whatsoever is excluded by this paragraph.

Purchased Lots – If for any reason a purchased lot cannot be delivered in the same condition as at the time of sale, or should any purchased lot be stolen, mis-delivered or lost prior to delivery, Potter and Potter Auctions, Inc. shall not be liable for any amount in excess of that paid by the purchaser.

Legal Ramifications – The rights and obligations of the parties with respect to these Conditions of Sale, the conduct of the auction and any matters connected with any of the foregoing shall be governed and interpreted by the laws of the jurisdiction in Illinois. If any part of these Conditions of Sale is found by any court to be invalid, illegal or unenforceable, that part shall be discounted and the rest of the conditions shall continue to be valid to the fullest extent permitted by law.

Discretion - Any and all of the conditions may be waived or modified in the sole discretion of Potter and Potter Auctions, Inc.

Potter and Potter offers historically significant items which may include culturally insensitive material, including but not limited to racist and sexist content. The content and form of such items does not reflect the views or values of the auctioneers or staff.

Potter & Potter Auctions, Inc. Phone: (773) 472-1442
(Illinois Lic. # 444.000388) Fax: (773) 260-1462
3759 N. Ravenswood Ave. Ste. 121 www.potterauctions.com
Chicago, IL 60613 info@potterauctions.com

Sami Fajuri, Managing Auctioneer
Lic. #441.001540

Text: Joe Slabaugh, Larry Lubliner, Gabe Fajuri, Rachel Miller & Celia Marks
Layout: Stina Henslee
Photography: Shelby Ragsdale

Note: Many supplemental and detailed images of auction lots ~ not shown in the pages of this catalog ~ are available online at *Liveauctioneers.com*, or directly from Potter & Potter.

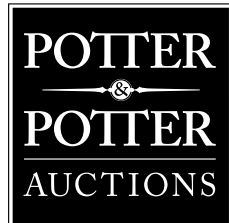
Potter & Potter wishes to thank Sharon and Ernie Avendano, Barbara Baldwin, Douglas Cain, Mario Carrandi, Dwight Cleveland, Janet Davies, Mario Davila, Morris Everett, Tim Felix, Susan Fox, Sheila Goldman, Dominic Greco, Larry Griffin, Paul Hindin, Chris Honetschlaeger, Christopher Jandacek, Robert Lerch, Pierre Mayer, Lisa Robinson, Terry Roses, Deanna Roth, Don Saltzman, Doe Schubert, John Sibbison, Shari Springer, Joe Vojacek, Jeremy Yagoda, Bob Yorburg, Ross Wandrey, Alex Warschaw, Jack White, and Bob Zurko for their assistance in the preparation of this catalog.

Contents copyright © 2018 by Potter & Potter Auctions, Inc.

All rights reserved. No part of this publication may be reproduced or transmitted in any form or by any means, electronic or mechanical, including photocopy, recording or any information storage and retrieval system now known or to be invented, without permission in writing from the copyright holders.

HOUDINIANA

FEATURING THE COLLECTION OF OF JOHN BUSHEY



PUBLIC AUCTION • OCTOBER 21, 2018

Including one of the best collections of Houdini pitch books ever assembled. Complemented by a strong selection of magic memorabilia, books, posters, choice antique apparatus, and the largest collection of Mikame Craft-made props to ever come to market.

