

PLAY NICKELS ONLY
 REWARDS IN 12½c CIGARS

WHEN YOU WIN TURN SMALL HANDLE on Side ONCE AROUND, and PRINTED TICKET WILL FALL IN RECEPTACLE IN FRONT

ROYAL FLUSH <small>ACE, KING, QUEEN, JACK AND TEN OF SAME SUIT</small>	100 CIGARS	STRAIGHT <small>ALL OF ONE SUIT REGARDLESS OF RANK</small>	5 CIGARS
STRAIGHT FLUSH <small>ALL OF ONE SUIT IN SEQUENCE, AS IN PLAY</small>	25 CIGARS	THREE OF A KIND	3 CIGARS
FOUR OF A KIND	15 CIGARS	TWO PAIR, Aces Up	2 CIGARS
FULL HAND <small>THREE OF ONE KIND AND TWO OF ANOTHER</small>	10 CIGARS		

MILLS NOVELTY COMPANY MILLS BUILDING
 JACKSON BOULEVARD AND GREEN STREET Chicago, U.S.A.



SUPERIOR

COIN-OP & ADVERTISING

MAY 29, 2021





PUBLIC AUCTION #100

COIN-OP & ADVERTISING

AUCTION

May 29, 2021
10:00am CST

INQUIRIES

Gabe Fajuri
info@potterauctions.com
phone: 773-472-1442

Preview period:
May 26-28, 10am-5pm
and by appointment.

CONTENTS

COIN-OP & VENDING.....	2
SIGNS, ADVERTISING & POSTERS.....	36
GAMBLING	53
TOYS, CONTAINERS, & FIGURALS.....	79
MILITARIA, ANTIQUES & MISCELLANEA	93



POTTER & POTTER AUCTIONS, INC.
5001 W. BELMONT AVE.
CHICAGO, IL 60641

ISSUES

FIDELITY, JUDICIAL (Court, etc.),
CONTRACT,
FRATERNAL ORDER.

1911 JANUARY 1911

SUN. MON. TUE. WED. THU. FRI. SAT.

1 2 3 4 5 6 7

SMITH HARRISON & HUNTER



COIN-OP & VENDING



1



3



2



4

1. A M Co. 5 Cent Gumball Machine. Circa 1950s. Height 17 1/4". Lock and key. Working.

3,500/4,200

2. Acorn 1 Cent Gumball Machine. Height 16". Lock and key. Working.

150/300

3. Roth & Langley Mo-Jo Chewing 1 Cent Gumball Machine. Brooklyn, NY, ca. 1910s. Original copper base. Height 10". Hook finger through the loop and press plunger to dispense gum. Not functioning. No key. Working. Includes vintage gumballs.

3,000/3,500

4. Advance Machine Co. 1 Cent Gumball Vendor. Chicago, IL, ca. 1920s. Original globe. Repainted base. Height 15". Globe loose. Lock and key. Working.

250/300



5



6



11



12



13



14



7



8



9



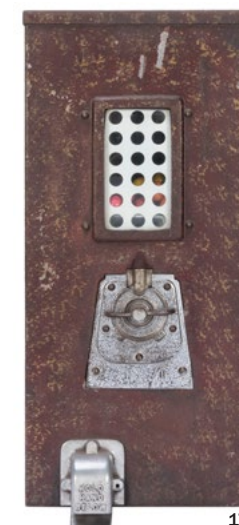
10



15



16



17



18

5. Hamilton Enterprises 1 Cent Mickey Mouse Gumball Vendor. Kansas City, MO, ca. 1930s. All original globe. Height 15". Decal is original. Porcelain base has minor wear. Lock and key. Working.

1,700/2,300

6. Lehman & Son Vending Co. 1 Cent Peanut Machine. Boston, MA, ca. 1910s. Copper body. Height 16 1/2". Restored decal. Lock and key. Working.

2,400/3,400

7. Asco Vending Machine Exchange 5 Cent Peanut Dispenser. Newark, NJ, ca. 1940s. Height 19". Original decal mostly worn away. Lock and key. Working.

400/600

8. Oak Mfg. Co. Inc. Premiere Ball Gum & Card Dispenser. Vernon, CA, ca. 1950s. 13 x 13 x 5 1/2". Lock and key. Working.

450/650

9. Victor Vending Corp. 1 Cent Baseball Gumball Machine. Chicago, IL. 18 1/2 x 9 x 21 1/2". Lock and key. Working.

400/600

10. Victor Vending Corp. 1 Cent Football Gumball Machine. Circa 1950s. Try your luck scoring a gumball touchdown. Height 14". No key. Working.

350/450

11. Atlas Master 1 and 5 Cent Gumball Machine. Circa 1951. Square glass globe with two-color decal. Height 18 1/2". Original decal. No key. Working. Includes gumballs.

100/200

12. Northwestern Mfg. Co. Model 33 1 Cent Peanut Vendor. Morris, IL, ca. 1930s. Blue cast iron base. Dispenser cover embossed "M.C. Prine, Baraboo, WI." Height 15 1/2". Repainted. Lock and key. Working.

200/400

13. Northwestern Mfg. Co. 1 Cent Peanut Vendor. Morris, IL. Red cast iron base with porcelain enamel. Height 16". Lock and key. Working.

300/450

14. Little Nut Type-C 1 Cent Vendor. Unusual base, new parts. Height 11". With key. Working. Sold as is.

300/500

15. Simpson Leebold 1-2-3 1 Cent Gumball Machine. Circa 1930s. Aluminum. Height 12 1/2". Lock and key. Working.

350/700

16. Automatic Clerk & Advertising Co. Mansfield Gum Dispenser. Newark, NJ, ca. 1902. Metal and glass. 12 x 6 1/2 x 8". Working.

900/1,200

17. Advance Machine Co. Operators Special Gumball Vendor. Chicago, IL, ca. 1920s. Embossed patent dates 11-5-12 and 4-24-23. 18 x 8 x 6". Lock and key. Working.

400/600

18. Victor Vending Corp. 'Victor 88' 25 Cent Gumball Dispenser. Chicago, IL, ca. 1980s. Height 18". Keys. Working.

100/200



19 20



21



24



26



27



28

19. Columbus Vending Co. 1 Cent Model JM Pistachio Vendor. Circa 1930s. Green porcelain base and top. Height 14". Reproduction #10 globe, new decal. Lock and key. 400/600

20. Victor Vending Corp. Topper 1 Cent Gumball Machine. Circa 1950s. Aluminum base and top. Height 15 1/2". Lock and key. Working. 100/200

21. Ad-Lee Novelty Co. E-Z Gumball Machine. Chicago, IL, ca. 1900s. Cast iron base and lid. Embossed patent date on tray reads Sept. 15, 1905. Height 15". Lock and key. Working. 1,700/2,100

22. Atlas Mfg. and Sales Co. Atlas Ace Gumball Machine. Aluminum body in red and yellow. Height 14 1/2". Original paint. Lock and key. Not functioning. 100/200

23. Advance Machine Co. 1 Cent Wall Gumball Machine. Chicago, IL, ca. 1920s. Patent dates 11-5-12, 4-24-23. Stamped serial number 1946 on plaque above mechanism. Height 28". Lock and key. Rare two-column version with selector knob and mirror. 600/800

24. Northwestern Merchandiser Mfg. Co. 1 Cent Gumball Machine. Morris, IL, ca. 1920s. Porcelain. Height 18". Lock and key. Working. 3,400/4,000



22



23



25



29



30



31

25. Lee Co. 1 Cent Gumball Machine. Circa 1930s. Working. Height 14 1/2". Screw on top has been replaced. Lock and key. Working. 200/400

26. Hance Mfg. Co. 1 Cent Periscope Gumball Machine. Westerville, OH, ca. 1920s. Cast iron. Claw feet. Height 19". Lock and key. Working. 2,200/2,800

27. All American 1 Cent Jerry Payne Gumball Machine. Dallas, TX, ca. 1950s. Drop a penny in, Texas high school football legend Jerry Payne kicks a gumball out. Height 18". Lock and key. Working. A rarity, being the only known example. Payne was an All-American football player from Odessa, TX. 3,000/4,000

28. Pennistik Dist. 1 Cent Pennistik Gum Vendor. Portland, OR. Height 18 1/2". Lock and key. Working. Scarce. 800/1,000

29. Puritan Co. 1 Cent Distributing Bulk Vendor. Kansas City, MO. Repainted. Height 16 1/2". Lock and key. Working. 300/500

30. Victor Vending Co. 1 Cent Model V Gumball Dispenser. Chicago, IL, ca. 1940s. Successor to the Victor Esquire. Height 15". Lock and key. Working. 125/225

31. Silver King Corp. 5 Cent Gumball Dispenser. Aurora, IL, ca. 1940s. Aluminum. Height 14". No key. Working. 100/200



32. **Northwestern Mfg. Co. Cast Iron Merchandiser.** Morris, IL, ca. 1930s. Cast iron. Height 16". No key. Not functioning. **125/225**

33. **Lot of 2 Regal Products Co. 1 Cent Dispensers.** Madison, WI, ca. 1930s. Height 12 1/2". One machine lacks dispensing lever. Locks and keys. Not functioning. **150/250**

34. **Guaranteed Products Co. 1 Cent Three Column Dispenser.** Los Angeles, CA, ca. 1930s. Chrome-plated sheet metal with three glass domes and embossed coin entry. Height 18". Working. **200/400**

35. **Model 33 1 Cent Peanut Vendor.** Morris, IL. Cast iron base. Height 16". Unrestored. Lock and key. Working. **250/400**

36. **H&W Machine Co. 1 Cent Gumball Dispenser.** Abilene, TX, ca. 1940s. Chrome base. Height 12". Lock and key. Working. **100/200**

37. **Hance Mfg. Co. 1 Cent Gumball Machine.** Westerville, OH, ca. 1920s. Height 19". Restored. No key. Working. **600/1,200**

38. **Silver King Corp. Giant Ace 25 Cent Vendor.** Aurora, IL, ca. 1950s. Height 14". Lock and key. Working. **150/300**

39. **H.K. Hart Confection Co. Inc. 1 Cent Gumball Machine.** Boston, MA, ca. 1950s. Height 11". Age-related wear. Lock and key. Working. **100/200**

40. **Ad-Lee Novelty Co. Model D Machine.** Chicago, IL, ca. 1920s. Original decal. Height 16". Lock and key. Working. **1,200/1,800**

41. **National Vending Machine Co. 1 Cent Colgan's Taffy Tolu Machine.** Chicago, IL, ca. 1900s. Cast iron base. Height 15". Replacement decal. Working. **3,000/5,000**

42. **Antique Peanut Vendor with Glass Sides.** Circa 1900s. Wood top. Scoop included. Height 24 1/2". **300/500**

43. **Northwestern Mfg. Co. 1 Cent Model 33 Junior Peanut Vending Machine.** Chicago, IL, ca. 1930s. Machine designed for limited space locations. Painted red base and top. Height 13". Replacement Lexan globe with new decal. Lock and key. Working. **800/1,200**

44. **Northwestern Mfg. Co. 1 Cent Model 33 Junior Peanut Vending Machine.** Chicago, IL, ca. 1930s. Machine designed for limited space locations. Green porcelain base and top. Height 11". Replacement Lexan globe. Replacement parts. Lock and key. Working. Works with or without a penny. **500/800**

45. **R.D. Simpson Co. 1 Cent Model A Gumball Vendor.** Columbus, OH, ca. 1920s. Cast iron. Height 15". Lock and key. Working. New decal. **800/1,000**



46



47



49



54



55



56



48



50



51



52



53



57



58



59

46. Pulver Co. Inc. 1 Cent Woody Woodpecker Short Case Machine. Rochester, NY, ca. 1940s. A plastic figure of cartoon icon Woody Woodpecker dispenses a stick of gum when a penny is inserted. Height 20". Lock and key with wind-up key included.

600/800

47. Pulver Co. Inc. 1 Cent Yellow Kid Too Choos Short Case Machine. Rochester, NY, ca. 1900s. A rare example of a Pulver short case with advertising on its sides. Red and white porcelain cabinet. Height 20". Wear to enamel. Rust to metal grid and die-cast metal Yellow Kid figure inside. Lock with wind-up key included. Working.

800/1,000

48. Automat Games (Silver King Corp.) 1 Cent Silver King Deluxe Machine. Aurora, IL, ca. 1930s. Cast iron body with embossed flat chute cover. Original paint. Height 14". Reproduction decal. Lock and key. Working.

200/400

49. Zeno Mfg. Co. 1 Cent Chewing Gum Vendor. Chicago, IL, ca. 1900s. This machine features a light oak cabinet and original metal fixtures. Original brass plate. Company information engraved on cabinet sides. Patent information reads August 11, 1892, May 21, 1895, and July 15, 1902. Height 17". No key, but back door unlocked. Working.

600/800

50. Columbus Vending Co. 1 Cent Model 21 Peanut Machine. Circa 1930s. Mint-colored porcelain machine was designed to be used on tavern bars and tables. Height 14". Lock and key. New decal. Working.

400/600

51. Atlas Mfg. Sales Co. 1 Cent Atlas Deluxe Gumball Machine. Cleveland, OH, ca. 1930s. Aluminum body. Height 15". Lock and key. New decal.

100/200

52. Coast Vending Co. 1 Cent Basketball Gumball Machine. Circa 1950s. Fill the machine with gumballs, drop a penny in and shoot your shot. Height 13 1/2". Lock and key. Working.

200/400

53. Moderne Vending Machine Co. 1 Cent Vending Machine. Circa 1920s. Add the required number of pennies into the machine and collect your gumballs. Height 16 1/2". Crack in glass. Lock and key. Working.

150/300

54. William Michael 1 Cent Peanut Vendor. Circa 1930s. Uncommon globe shape. Height 14". Lock and key. Working.

600/900

55. Mills Automatic Merc. Corp. 1 Cent Six Column Gum Vendor. Chicago, IL, ca. 1930s. Stainless steel case. Height 16". Age-related wear, particularly at top. No keys. Working.

100/200

56. Scoopy Mfg. Co. 1 Cent Gumball Machine. Circa 1950s. Drop a penny in and watch the baker remove a gumball. Height 20". Lock and key. Baker needs adjustment.

1,400/2,000

57. Eppy "Charmy" 1 Cent Gumball Vending Machine. Circa 1960s. Red cast iron base with squiggly paint designs. Height 18". Lock and key. Working.

100/200

58. Bluebird Products Co. 1 Cent Bulk Vendor. Circa 1910s. Aluminum body. 16 1/2". Lock and key. Working.

200/400

59. Martin Glocke 5 Cent Gumball Vendor. Circa 1950s. German-made. Aluminum body. Height 16". Scarce original "pumpkin" globe. No keys. Working.

200/400



60



61



62



63



64



65



66



67



68

60. Kelling-Karel Co. Double-Kay Nuts Dispenser. Chicago, IL, ca. 1910s. Cast iron with porcelain enamel. Hand-painted advertising for Planters nuts. 17 x 21 x 9 1/2". No keys.

150/300

61. Atlas Mfg. & Sales Co. 1 Cent Atlas Midget Gumball Machine. Circa 1950s. Nickel plated aluminum. Also known as the "Betty Barker" or the "Little Wonder." Original dome. Height 11". Crack in glass has been covered over with tape. Lock and key. Working.

150/250

62. Coast Vending Co. 1 Cent Basketball Gumball Machine. Circa 1950s. Fill the machine with gumballs, put a penny in and take your shot. Height 13 1/2". Restored. No keys. Working.

200/400

63. Pulver Co. Chewing Gum Machine Orange Case. Circa 1930s. Steel and enamel. Screen and lock included. Height 21". Areas that have lost porcelain have been repainted. Bends near lock.

1,000/1,400

64. American Products Co. 1 Cent Candy Vendor w/ Mirror. Four chambers. Height 19 1/2". Metal case displays some corrosion. Back slightly loose. Lock and key. Working.

200/400

65. Lee-White Vending Machine Co. 1 Cent Little Salesman Machine. Brockport, NY, ca. 1900s. Two column vending machine. Original product boxes included. Stenciling in good condition. Height 35 1/2". Lock and key. Working. Scarce.

2,000/4,000

66. Pulver Products 1 Cent "Wait on Yourself" Vendor. Circa 1940s. Paint colors remain crisp and bright. 15 x 11 1/2 x 4 1/2". No key.

400/600

67. Champion 1 Cent Catalogue Dispenser. Champion Vending Machine Co., ca. 1899. Two column vendor, wooden casing, bolted to a metal stand with wheels. The machine would dispense a 36-page catalogue for one penny. Height 25" without stand. Vertical split to front insert.

300/500

68. Mills Superior 5 Cent Poker Reel Trade Stimulator. Mills Novelty, ca. 1904. Tabletop five-reel trade stimulator. Beautiful original castings and wooden cabinet; original mechanism and reel strips. Award card and marquee list the number of cigars won, corresponding to the poker hand shown (marquee appears to be an older, well made re-casting). In addition to the slot mechanism, this machine dispenses a fortune ticket to the customer, operated with a second lever on the side. Slot and fortune mechanisms working (full roll of fortunes included). 23 1/2 x 19 x 14". Lock and key included both for back door and side cash box. A rare and impressive early machine.

8,000/12,000



69

69. Paupa & Hochriem Co. 5 Cent Pilot Trade Stimulator. Circa 1900s. Often mistaken for a Mills & Co. creation. Cast iron rendered in stunning detail. 14 1/2 x 12 x 11 1/2". Retains original back door. Original plating. Lock and key. Not functioning. Machine may not be complete internally. With a quantity of old tokens. A rare machine, sold for restoration.

800/1,600



70. Charles Fey & Co. On the Level Machine. Circa 1930s. Aluminum case with stylized design of a bear walking across a row of dice on either side. 13 x 10 x 9 1/2". All original. Lock and key. Working. Only \$1/\$0.50 example known.

20,000/30,000

This is the only known example of Fey's On the Level machine that accepts dollar coins.



71



73

71. Charles Fey & Co. Coin-Op Dicer Trade Stimulator. San Francisco, CA, ca. 1900s. Cast iron case with stylized design of a woman in classical garb picking grapes on either side. 9 1/2 x 9 1/2 x 7 1/2". Lock and key. Working.

2,200/2,600

72. Groetchen Tool & Mfg. Co. 1 Cent Tavern Trade Stimulator. Circa 1935. Height 12". Restored. Lock and key.

800/1,200



72



74

73. Mills Novelty Co. 1 Cent Jockey Trade Stimulator. Chicago, IL, ca. 1910s. Original reel strips. Oak cabinet with intricate wreath and torch designs on either side. With marquee (repaired) 21 x 15 1/2 x 12". Lock and key. Working.

3,000/4,000

74. Western Automatic Weighing Co. Nickel Tickler Trade Stimulator. Circa 1890s. All original parts. Height 15 1/2". Light cracking to inner panel. Lock and key. Working. One of only two known machines manufactured by this company.

1,000/2,000



75



76



77



78



79



80



81



82



83



84



85



86

75. Daval Mfg. Co. 1 Cent Chicago Club-House Trade Stimulator. Circa 1930s. Try your luck – drop a penny in. Five reel poker hand machine. Cast aluminum case. Original reel. 13 x 11 x 8 ½". Lock and key. Working.

500/800

76. Betco Products Inc. 1 Cent Player's Choice Trade Stimulator. Butler, PA, ca. 1940s. One penny into the coin slot gets five pinballs. Shoot them into the playing cards. 8 x 16 ½ x 16 ½". Rubber bands stretched at the edges are broken. Lock and key. Working.

200/400

77. 1 Cent Three-Reel Trade Stimulator. Maker unknown, ca. 1920s/30s. Similar to Mills Puritan Blue Bell. 12 x 12 x 9". Case repainted. Possibly remade cabinet. Original reel strips. Mint vendor. Lock and key. Working.

200/400

78. Victor Vending Corp. "Home Run" Trade Stimulator. Chicago, IL, ca. 1940s. Pull the trigger, send the ball sailing across the field. 14 x 30 x 11". Keys included. Working.

1,400/1,800

79. O.D. Jennings & Company 5 Cent Slot Machine. Chicago, IL, ca. 1920s. Three-reel gooseneck slot machine. Wood case. Original mechanism. 25 x 15 x 14 ½". Lock and key. Working. Requires third party transportation.

800/1,000

80. Screen Stars Single Reel Slot Machine. Wood sides and base with an aluminum front. 24 ½ x 13 x 12". Lock and key. Working.

400/800

81. Caille Bros. Mfg. Co. 5 Cent Silent Sphinx Slot Machine. Detroit, MI, ca. 1930s. 24 x 14 x 13". Unrestored. Back door missing. Oak cabinet with some wear. Coin tray split horizontally. No key. Not functioning. Requires third party transportation.

600/1,000

82. Caille Bros. Mfg. Co. Ben Hur Single Wheel Slot Machine. Detroit. 25 ½ x 15 x 10 ½". Back door held loosely/no lock. Not functioning. Requires third party transportation.

600/800

83. Mills Novelty Co. War Eagle 5 Cent Slot Machine. Chicago, IL, ca. 1930s. Brightly painted in yellow, blue, red. 25 x 17 ½ x 15". Lock and key. Not functioning. Requires third party transportation.

1,000/2,000

84. O.D. Jennings & Co. Century 5 Cent Triple Jackpot Slot Machine. Chicago, IL, ca. 1930s. 26 ½ x 15 x 15 ½". Lock and key. Working. Requires third party transportation.

1,200/1,500

85. Watling Mfg. Co. 5 Cent Blue Seal Jackpot Bell Slot Machine. Chicago, IL, ca. 1930s. Cast aluminum. Original machinery. 24 ½ x 15 ½ x 15". Lock and key. Working. Requires third party transportation.

1,000/1,200

86. O.D. Jennings & Company 10 Cent Star Brand Slot Machine. Chicago, IL. Cast aluminum. Original machinery. 23 x 15 x 14 ½". Wear to wooden base. Lock and key. Working. Requires third party transportation.

800/1,200



87



88



89



90



94



95



96



91



92



93



97



98



99

87. Mills Novelty Co. War Eagle 5 Cent Slot Machine. Chicago, IL, ca. 1930s. Painted in yellow, blue, red. 25 x 17 1/2 x 15". Back is loose. No keys. Working. Requires third party transportation. 1,000/2,000

88. O.D. Jennings & Co. Victory Chief 5 Cent Slot Machine. Chicago, IL, ca. 1930s. 28 x 15 x 15". Back is loose. No keys. Not working. Requires third party transportation. 800/1,200

89. H.C. Evans & Co. Deluxe Winter Book Horse Racing Slot Machine. Chicago, IL. 38 x 50 x 27". Not tested. Sold as-is. Restoration project. Requires third party transportation. 200/400

90. Eddie's Fabulous 50s 5 Cent Casino Slot Machine. Height 21". No keys. Lights up, but mechanism not functioning. Requires third party transportation. 300/500

91. Mills Novelty Co. 25 Cent Horseshoe Slot Machine. Chicago, IL. Manufactured for use at Binion's Horseshoe Club, Las Vegas. 26 x 15 x 15". Key included. Working. Requires third party transportation. 800/1,200

92. Mills Novelty Co. 10 Cent Bursting Cherries Slot Machine. Chicago, IL, ca. 1930s. Serial number 421937. 26 x 15 x 15". Lock missing at back of cabinet. Keys included. Working. Requires third party transportation. 800/1,200

93. O.D. Jennings & Co. "Little Duke" 1 Cent Slot Machine. Chicago, IL, ca. 1930s. Serial number 20695. Wonderful Art Deco design. Side window displays original mechanism. 24 x 14 x 12". Crack on back of cabinet. Keys included. Not working. Requires third party transportation. 1,500/2,500

94. Pace Mfg. Co. 10 Cent Bantam Slot Machine. Chicago, IL, ca. 1930s. Original machinery. 19 1/2 x 14 1/2 x 14". Metal face loose. No keys. Working. Requires third party transportation. 800/1,200

95. Mills Novelty Co. 25 Cent Diamond Front Slot Machine. Chicago, IL, ca. 1940s. Classic three-reel machine with handsome chrome finish on wooden base. Height 25" Lock and key. Working. Requires third party transportation. 1,000/1,500

96. Starette Countertop Pinball Arcade Machine. English, early 20th century. An English penny releases ten balls. Shoot them into the playfield holes for highest possible score. 24 x 12 1/2 x 7". Two keys. Working. Requires third party transportation. 300/400

97. Mills Novelty Co. "The Nugget" 5 Cent High Top Slot Machine. Chicago, IL, ca. 1940s. Height 26". Key included. Working. Requires third party transportation. 800/1,200

98. Mills Novelty Co. 5 Cent South Tahoe 8 Ball Slot Machine. Chicago, IL. Drop in a nickel, hope for sevens. Height 26". Key included. Working. Requires third party transportation. 800/1,200

99. Mills Novelty Co. 10 Cent Commercial Hotel Casino Slot Machine. Chicago, IL. Height 20". Key included. Working. Requires third party transportation. 300/500



100



101



103



107



108



109



102



104



105



106

100. Club Cal-Neva 25 Cent Casino Slot Machine on Stand. Reno, NV, ca. 1960s. Double-reel slot machine from one of Reno's historic casinos. Attached to stand with locking doors. Height 62". Keys included. Requires third party transportation. 300/500

101. Jennings & Co. Mapes Money Tree Casino 1 Dollar Slot Machine. Height 59" including stand. Keys included. Not functioning. Requires third party transportation. 200/400

102. Harvey's Wagon Wheel Casino 1 Dollar Double Slot Machine. Slot machine from the Stateside, NV casino. 20 x 24 x 14 1/2". Keys included. Requires third party transportation. 400/600

103. Mills Novelty Co. Bell-O-Matic 5 Cent Slot Machine on Stand. Chicago, IL. Serial no. 602658 impressed in wooden base. Swiveling stand. Height 50". Keys included. Requires third party transportation. 400/800

104. Harrah's Casino 5 Cent Slot Machine. Height 20". Key included. Requires third party transportation. 300/500

105. Harold's Club 50 Cent Casino Slot Machine. Reno, NV. Height 22". Key included. Requires third party transportation. 300/500

106. Harrah's Casino 5 Cent Slot Machine. Circa 1960s. 22 x 15 x 14". No keys. Working. Requires third party transportation. 300/600

107. O.D. Jennings & Co. 5 Cent New China Club Chief Slot Machine. Chicago, IL. Height 26". Key included. Working. Requires third party transportation. 800/1,200

108. Pace Mfg. Co. Primadonna Casino 5 Cent Slot Machine. Chicago, IL, ca. 1960s. Manufactured for use at the casino in Reno, NV. Height 21". Keys included. Working. Requires third party transportation. 400/600

109. Horseshoe Club Casino 10 Cent Slot Machine. Reno, NV. Height 22". Crack in glass. Keys included. Requires third party transportation. 300/500

110. Mills Novelty Co. "Extraordinary" 25 Cent Slot Machine. Chicago, IL, ca. 1930s. Cast iron. Wonderful Art Deco design. 27 x 15 x 16". Keys included. Working. 1,200/1,800

111. Assorted Casino and Slot Machine Items. Six pieces, including: Mapes and Money Tree Casino personnel sign (22 x 33 1/2"). - Harold's Club heavy duty green dealer apron with yellow lettering. - Harold's Club "Cashball" poster (20 x 16"), many creases. - Pace slot machine 5 cent coin entry. - (3) casino slot machine toppers and signs. 80/150

112. PSA Airlines / Las Vegas. Circa 1960s. Photographic airline poster depicting a Jennings slot machine in low lighting. Lettering in pink and yellow in the style of a neon sign. 30 x 23 1/4". Linen backed. A. 150/250



110



111



112



117



118



119



120



121



122



123



124



125



126



127



113



114



115



115A



116

113. Harrah's Reno Hotel & Casino Acrylic Sign. Reno, NV. 8 x 15". Plastic plate held in place with black tape.

100/200

114. Vintage Neon Casino Sign. Retro design. Paint is crisp and bright. Bulbs intact. 10 1/2 x 34 x 7 1/2". Working. Requires third party transportation.

200/300

115. BELL, Charles (American, 1935-1995). Gumball Machine. Photorealistic print of a gumball machine, candy jar, and peanut jar. Matted and framed, 25 1/2 x 31 1/2". Not examined out of frame.

100/200

115A. BELL, Charles (American, 1935-1995). Rol-A-Top. 1981. Photorealistic image of a slot machine. Matted and framed, 24 1/2 x 30 1/2". Not examined out of frame.

100/200

116. Watling Mfg. Co. Slot Machine Shipping Crate. Chicago, IL, ca. 1920s. Crate with stenciled lettering. Two shelves inside, added later. 27 1/2 x 16 1/2 x 18 1/2".

250/400

117. O.D. Jennings & Co. Target Countertop Skill Game. Chicago, IL, ca. 1920s. 17 1/2". Lock and key. Working.

300/500

118. Peo Mfg. Co. Whirl Ball Game. Rochester, NY, ca. 1930s. Height 16". Later replacement glass front. No key. Working.

400/600

119. Genco Mfg. Co. 5 Cent Hoops Arcade Machine. Chicago, IL, ca. 1930s. Art Deco-style graphics. Height 29 1/2". Including three original balls and one ping pong ball. Lock and key. Working.

600/800

120. Pace Mfg. Co. 1 Cent Whizz Ball Game. Chicago, IL, ca. 1930s. Height 17". Keys included. Working. Only 500 produced.

450/650

121. Spot A Ball 5 Cent Countertop Pinball Machine. Wood cabinet in excellent condition. 28 x 15 1/2" x 9". Lock and key. Working.

400/600

122. Early 1 Cent Derby Horse Race Countertop Pinball Machine. 25 1/2 x 16 1/2 x 8 1/2". Missing wood back door. Game play wear. Working.

400/600

123. B.A. Withey King Six Junior Dice Machine. Chicago, IL, ca. 1930s. 12 x 12 x 16 1/2". Lock and key. Working.

500/800

124. Hercules 1 Cent Coin-Operated Strength Tester. Original condition. 13 x 6 x 13 1/2". Missing back door. Working.

550/750

125. Exhibit Supply Co. Card Vendor. Chicago, IL, ca. 1940s. 11 x 7 x 9 3/8". Back door open. No key.

500/600

126. Carris Novelty Co. Automatic Match Dispenser. Washington, IA. Copper flashed cast iron. 5 x 6 1/2 x 8". Working.

600/800

127. Universal Match Co. Match Machine. St. Louis, ca. 1910s. Turn the knob to dispense a matchbook. Dispenses for free as designed. Glass dome. Height 14". Reproduction advertisements; with a quantity of vintage pinup matchbooks.

800/1,200



128



129



130



132



137



138



136



139



140



131

128. Coin Operated Lighter Fluid Dispenser. Cast iron. 16 1/2 x 7 x 7". Restored. Lock and key. Working.

800/1,200

129. Van-Lite 1 Cent Lighter Fluid Dispenser. Original paint. Height 18 1/2". Lock and key. Working.

600/800

130. Coin Operated Station Briquets Lighter Fluid Dispenser. France, ca. 1930s. Designed in the style of a gas pump. Height 13". Some damage to body. One of only two known examples.

600/800

131. Bennett & Co. Cigar Vendor. Kalamazoo, MI, ca. 1900s. Patent date Sept. 25, 1900. Diam. 32". Requires third party transportation.

1,200/1,500

132. Advance Machine Co. 10 Cent Wall Mount Comb Vendor. Chicago, IL, ca. 1920s. Patent date on plate reads 4-24-23. Height 33". No keys. Working.

100/200

133. Vend-Rite Mfg. Co. 5 Cent Kleenex Tissue Wall Vendor. Chicago, IL, ca. 1940s. Paint is crisp and bright. Inner machinery in good condition. Height 30". Lock and key. Working.

150/300

134. Vend-Rite Mfg. Co. 1 Cent Wall Mount Cracker Vendor. Chicago, IL. Height 37 1/2". No keys. Not functioning.

150/300

135. Reliable Engraving Co. 25 Cent Toothbrush Vending Machine. Chicago, IL. Height 25 1/2". No keys. Not functioning.

150/300



133



134



135



141



142



143



144

136. British Automatic Co. Ltd. Coin-Operated Medicine Dispenser. Circa 1950s. Wooden cabinet, made to be mounted to walls at hotels or hospitals. Height 16". Lock and key. Not functioning. Working.

300/500

137. Antique Aspirin Wall Mount Coin-Operated Vending Machine. Wood cabinet with vintage signage. Height 21". Detached lock inside of vending chamber. Lock and key. Lock does not open. Not functioning. Includes three vintage packages.

1,200/1,500

138. Hospital Specialty Co. 5 Cent Fems Sanitary Napkin Machine. Cleveland, OH, ca. 1930s. Wall mount vending machine with enamel finish. Height 32". Lacks top lid. No keys. Working.

100/200

139. Dillon Mfg. Co. American Postmaster Stamp Machine. Washington, D.C. 10 1/2 x 9 x 8". Lacking left plate on coin slot. Loss of enamel to body. Lock and key. Working.

200/300

140. Coin-Operated U.S. Stamp Vendor. Height 14 3/4". Age-related wear. Decals on either side of cabinet for Rutland, VT Chamber of Commerce. Working.

80/125

141. Schermack Products Corp. U.S. Postage Stamp Vendor. Detroit. 13 x 9 x 10". Damage to one of the plastic hoods. No key. Working.

100/200

142. Dixie-Vortex Co. 1 Cent Dixie Cup Dispenser. Easton, PA, ca. 1910s. Patent date December 16, 1913. Original glass tube with embossed designs. Height 32 1/2". Lock and key. Working.

400/600

143. Dixie-Vortex Co. Trophy Wall Mount Cup Dispenser. Chicago, IL. Height 18 1/2". Not coin-operated. With a box of 100 Sweetheart Paper Products Co. cups.

100/200

144. Hand Towel Wall Dispenser. Circa 1990s. 17 x 14 1/2 x 9". Lock and key. Not tested.

100/200



145



146



149



150



147



148

145. Dan Mfg. Co. Hot Beverage Dispenser. Montreal, QC. Advertises delicious hot beverages in bright red and white colors. 20 x 18 x 14". Lock and key. New old stock/unused. Instructions for safe use inside of body.

100/200

146. Orange Food Products, Inc. Tropical Orange Coin-Operated Syrup Dispenser. Boston, MA, ca. 1930s. A relic of a short-lived company. Includes original patent for product, recipe book, original repair tools, and vintage photographs. Height 20 1/2". Lock and key. Not functioning.

500/1,000

147. Midway Space Invaders Video Arcade Game. Midway Games, 1978. Classic "shoot 'em up" video arcade game, with fully functional gameplay, including audio. Includes the manufacturer's 20-page parts catalog (dated Oct. 1978) and six prints of the machine's schematics and mother board; and a spare, unused example of the decorative plate. 68 x 34 x 26 1/2". Light chipping to veneer; overall beautifully maintained. With keys. The lock has been removed from the front coin entry door and replaced with a knob, allowing the user to add credits without coins.

1,000/2,000

148. Rock-Ola Mfg. Corp. 6000X Legend CD Jukebox. Torrance, CA, ca. 1990s. 100-CD capacity. Accepts bills, coins. 35 x 63 x 28". Key included. Lights up. Requires third party transportation.

800/1,200

149. Coin Operated Dahlberg 4130-D1 Pillow Speaker Radio. Minneapolis, MN, 1955. Original wiring. Main body 8 x 13 1/2 x 5". Crack on radio dial screen. Original mounting bracket and speaker included. Not functioning.

200/350

150. Robert Lawrence Electronics Corp. 25 Cent Ro-la Coin Radio. Minneapolis, MN, ca. 1950s. Manufactured for use in hotels and hospitals. Drop a quarter in for two hours of listening. 10 1/2 x 20 x 9 1/2". Restored with new body. Reproduction cards in windows on either side of speaker. Lock and key. Not functioning.

150/300



151



152



153



154



155



156



157



156A

151. Personal Music Corp. 5 Cent Personal Music Phonette Radio. Circa 1940s. One nickel gets you six minutes of continuous music. Manufactured for use in restaurants and diners. Height 6 1/2". Age-related wear. No keys. Not functioning.

100/200

152. Karola Corp. 25 Cent Radio. Minneapolis, MN, ca. 1940s. 9 x 13 x 8". Restored. Modern information card affixed to top. No keys. Not tested.

150/300

153. Coradio, Inc. 25 Cent Radio. Paterson, NJ, ca. 1950s. 10 1/2 x 14 x 7 1/2". Restored. One knob loose. Lock and key. Working.

150/300

154. Radio-Matic of America, Inc. 25 Cent Radio. Indianapolis, IN. Wood body. 10 1/2 x 15 x 8". Restored. Lock and key. Lights up, no signal.

100/200

155. Radio-Matic of America, Inc. 25 Cent Radio. Indianapolis, IN. Wood body. 11 x 15 x 8". Restored body. Original tubing. Lock and key. Not tested.

100/200

156. Tradio, Inc. 25 Cent Hotel Radio. Asbury Park, NJ, ca. 1940s. 9 x 15 x 7 1/2". Paint has mostly worn away. No keys. Not functioning.

100/200

156A. Swedish American Telephone Co. Three-Slot Wall Mount Payphone. Chicago, IL, ca. 1930s. 18 x 6 x 6 1/2". Replacement mechanism. Separate envelope with parts. No key. Not tested. Sold as-is.

200/400

157. Buckley Music System Inc. Wall Mount Music Box Record Selector. Chicago, IL, ca. 1950s. Steel, glass front, with molded plastic sides (misshapen). Height 11 1/2". Lock missing. Unrestored.

100/150



160

158. Northwestern Mfg. Co. Mouthy Marvin 25 Cent Vending Machine. Morris, IL, ca. 1970s. Prizes and extra decal included. Six original speakers inside, not connected. 45 1/2 x 18 x 11". Lock and key. Speakers not tested. Working. Requires third party transportation.

200/400

159. World Wide Mfg. Co. Vendorama 1 Cent Machine. Circa 1960s. One of only a handful known to exist. Original prizes included. On every eighth use, a surprise would vend in a small box. 52 x 13 x 12". Door is loose. Residue from tape used to hold cover in place on front and sides. No keys. Not functioning. Requires third party transportation.

200/400

160. Space Patrol Scout Ship Coin-Operated Kiddie Ride. Modern full-size recreation of the classic design which inspired children of the 1950s to shoot for the stars. Original design created for the 1950s television show *Space Patrol*. 51 x 81 x 34". Working. Requires third party transportation.

30,000/40,000

The Space Patrol Scout Ship Kiddie Ride was originally commissioned by the show's main sponsor, the Ralston-Purina Co., and produced by the Exhibit Supply Co. of Chicago. The checkerboard pattern on the ship's wings was modeled after the company's logo. Four prototypes of this ride were created, but with the show's cancellation in February 1955, plans for mass production were scrapped. This recreation matches the original down to the smallest detail, with the only additional feature being an audio card which plays the original show's theme song when activated.



158



159



161. Laffing Sal 5 Cent Animatronic Figure. Modern full-size recreation of the classic amusement park character whose raucous laugh attracted visitors to funhouses across the United States. 54 x 93 x 23". Working. Requires third party transportation.

18,000/25,000

*The iconic "Laffing Sal" carnival attraction was originally produced by the Philadelphia Toboggan Co. throughout the 1920s/30s. Every detail in this recreation is faithful to the original, from its cosmetic design to its internal mechanisms. Her famous laugh is recreated here as well, with an MP3 of the original record complete with adjustable volume control. Laffing Sal has made numerous appearances in American pop culture over the years, including the motion pictures *Man in the Dark*, *X: The Man with the X-Ray Eyes*, and *The Princess Diaries*.*



162. Joseph Claude Sinel Model S "Step On It" Scale. New York, ca. 1920s. Cast iron, steel, mirrored glass. Classic Art Deco design echoing that of the Empire State Building. Height 77 1/2". Working. Requires third party transportation. An important piece of industrial design; examples of this machine are held at several major American art museums.

10,000/12,000

One of the pioneers of industrial design, Joseph Claude Sinel (1889-1975) began his career in 1918 San Francisco. By 1923 he had over 300 trademark designs to his credit, one of his most famous being the Model S ("Step on It") scale. This scale has been restored down to the bare metal mechanism. It is unusual for not having any numbers on the dial, supposedly so that one's weight is not revealed to random passersby. Instead, the person's weight was printed on a card dispensed from the scale along with a fortune.



164



165

163. **Watling Coin-Operated 1 Cent "Question and Answer" Scale.** Arcade scale, with porcelain and cast-iron parts, the top of the scale showing your weight as well as the answer to a question on a rotating dial. Sign on the front asks "Have you gained or lost weight?" Height 51". Working. Lock and key. **100/200**

164. **Capitol Projector Corp. 10 Cent Auto Test.** New York, ca. 1950s. 27 x 76 x 73". Seatbelt, left mirror later additions. Restored with original Formica. New upholstery. Working. Requires third party transportation. **10,000/12,000**
The Capitol Projector Corp. Auto-Test was one of the first machines to give users the experience of simulated driving. This machine has been expertly restored, with original driving simulator footage copied onto new film and looped. Original tape player has been replaced with an MP3 board.

165. **Williams Mfg. Co. Music Mite 5 Cent Jukebox.** Chicago, IL, 1951. Drop in a nickel, ask your sweetheart for a dance. Height 53". Restored. Finely made reproduction stand. New needle. Working. Requires third party transportation. **6,000/9,000**
Music Mite jukeboxes were manufactured by the Williams Mfg. Co. in partnership with RCA, who only a year before had begun to manufacture the first 45 RPM records. Only 1,400 are known to have been produced. This Music Mite has been restored with original parts, with the amplifier rebuilt and recapped.

166. **SNK Corp. Neo-Mini Arcade Claw Digger.** Suita, Japan. 60 x 18 x 18". Needs new coin entry/adjustment. Working. Requires third party transportation. **200/400**



163

166



167

167. **C.J.A. Novelty Co. 1 Cent Clamshell Mutoscope Viewer.** Chicago, IL, ca. 1900s. Cast iron. Plays W.C. Fields classic 1915 film *The Pool Shark*. Ornate designs. 75 x 15 x 18". Repainted. Small chips from casting at top of column. Reproduction *The Pool Shark* sign and reel. No keys. Working. Requires third party transportation. **6,000/9,000**

168. **Exhibit Supply Co. Peep Show Coin-Operated Barrel Viewer.** Original figural penny arcade game features busts of a man and woman standing behind barrels. Drop in a coin to light up the inside of the barrel and peep inside. Height 71". **1,000/1,500**



168



169

169. **Redco Products Corp. 1 Cent Silver Comet Cigarette Vendor.** La Crosse, WI, ca. 1930s. Metal. 8 x 10 x 6". Key included. Working. **200/300**

170. **Rosenfield Mfg. Co. 1 Cent Regent Arcade Viewer Machine.** New York, ca. 1900s. Beautifully restored arcade viewer, with oak cabinet, cast front plaque depicting a dancing woman, claw feet, and other matching castings. 72 x 18 x 16". With original stereoscope cards for the risqué Nanette Comstock series advertised on the marquee. Reproduction marquee sign. Working, but mechanism in need of tune-up. No keys. Requires third party transportation. **2,000/4,000**



170



171

171. **5 Cent Upright Stereoscope Arcade Viewer Machine.** Circa 1900s. Beautifully restored and working coin-operated flip-card viewer machine with wooden cabinet, cast metal claw feet, handles, and cherubs holding the marquee in place. Drop in a nickel and a carousel of risqué images flip by, illuminated by a bulb inside. Includes original stereoscope cards. 72 x 20 ½ x 16". Includes crank. Reproduction marquee sign. No keys. Requires third party transportation.

2,000/4,000

172. **Mercury Athletic Scale Co. Countertop Strength Tester.** Detroit, ca. 1950s. 16 ½ x 15 x 11 ½". Lock and key. Working.

450/650



172



171

173. **L.B. Mfg. Corp. Las Vegas Slot Machine Chair.** Circa 1990s. Rotates on heavy chrome metal base. 35 ½ x 35 ½ x 11". Age-related wear. Requires third party transportation.

100/300

174. **Arcade Coin Changer.** Circa 1897. Likely manufactured by Mills Novelty Company, Chicago, IL. Ornately designed. Height 25". Working.

500/800

175. **Antique Nickel Changer.** Height 18 ¾".

50/100

176. **Columbus Vending Co. Gumball Wall Mount on Stand.** Cast iron. Height 36".

450/650



173



176



175



177

177. **Early Unusual Gumball Machine Stand.** Cast iron. Star-shaped platform. Height 30".

200/350

178. **Early Cast Iron Ornate Gumball Machine Stand.** Cast iron. Height 38".

300/500

179. **Chicago South Water Market Photograph.** Chicago: Kaufman & Fabry Commercial Photography Co., 1920s. Framed (no glass) sepia-toned photograph of opening of the South Water Market, August 31, 1925. Framed, 18 ½ x 15 ½".

50/100

180. **Vintage Photograph of Wadhams Gas Station.** Circa 1940s. Two Rivers, WI. Matted. Framed, 10 ½ x 12 ½".

50/100

181. **City of Chicago Amusement Licenses. 1892/95.** Lithographed licenses made out to the Central Music Hall at State & Randolph St., for the years 1892-93 and 1894-95, at a cost of \$200. The licenses permit the business to "give entertainments of the 2nd class,...provided that no gaming, raffle, lottery, or chance distribution of money or articles of value shall be connected therewith." 18 x 12". Chipping and soiling in margins; 1892 license with substantial marginal chipping and losses. Rare.

250/350

182. **Antique Trolley Fare Box.** 19 ½ x 8 x 6". Later stickers added. No keys. Not working.

100/200

183. **English Brass Tobacco Honor Box.** Locking side of the box holds coins funneled in from the coin slot; the other side would hold tobacco, and patrons were "on their honor" to take a fair portion of tobacco. On ball feet. 8 ½ x 8 ½ x 4 ½". Original key included.

100/200



179



180



181



182



183



184



189



185



190



191



192



193



194



186

184. **Smoking Pipe Collection with Rack.** Forty-three pipes altogether, including Kaywoodie, Kirsten, Middleton Mountaineer, Ropp Alpine, and others. Several meerschaum included. Three pipe cases. Three-tier wooden rack with capacity for 24 pipes.

150/250

185. **Four Antique Brass Hotel Bells.** Approximate height of each, 5". One with wooden base split from stand. Others working and in fine condition.

100/200

186. **Country Store Oak and Glass Collar Display Case.** American, ca. 1910s/20s. Displaying nine Earl & Wilson collars, held with pins to the rear posts. Thick glass sides, oak base with felted inner surface. 25 x 6 x 21".

300/400

187. **Brunhoff Mfg. Co. Declarencia Cigar Cutter.** Cincinnati, ca. 1900. Cast iron. Height 9". Working.

600/800

188. **Stein Bros. Countertop Topic Cigar Cutter.** Milwaukee, WI, ca. 1900s. Metal and glass on wood base. 5 3/8 x 8 x 5 3/4 ". Working.

500/700

189. **Countertop Double Handle Cigar Cutter.** Ornatly designed. Metal. 4 1/2 x 12 x 5 1/2 ". Working.

250/350

190. **Brunhoff Mfg. Co. Cigar Cutter.** Cincinnati, ca. 1890s. Advertises Eisenlohr's 5 Cent Cigars. 3 3/4 x 6 1/2 x 5". Working.

300/500



187



188

191. **Black Americana Cast Iron Smoking Stand.** Ashtray, matchbook holder and a small cup for cigarettes are included. Height 32". All pieces appear to be original. Little to no paint loss.

400/800

192. **Pair of Figural Cigarette Holders.** German. Includes Felix the Cat and a young boy dressed as a server. Tallest 7".

150/250

193. **National Cash Register Co. Ticket Box & Spindle.** Dayton, OH. Copper box with glass sides. Height of both, 6". Spindle features embossed base. Lock and key.

80/150

194. **Pair of Cast Iron Shooting Gallery Bird Targets.** Early 20th century. Two bird targets. 2 3/4 x 4" each.

80/125

195. **Surfer Girl Figural Pool Table or Bar Lamp.** Hooks in place for hanging. 14 1/2 x 47 x 11". Working.

200/300

196. **Roi-Tan Cigars Countertop Display Case.** Wood frame with vintage Roi-Tan decals on glass. Includes a few vintage cigar boxes. 9 x 25 x 35 1/2". Wear to decals.

300/500

197. **Timex Corp. Rotating Watch Display Cabinet.** Middlebury, CT. Excellent working condition. Height 70". Lock and key. Working.

350/600



195



196



197

STEP OUT...



MODERNIZE
SIGN
ADVERTISING
& POSTERS
ROYAL



FORWARD and onward! The movement is well under way. Business offices everywhere are trading out their outmoded typewriters, installing new Royals. Steadily increasing sales of Royals reflect the wide extent of this activity.

For executives have found that only Royals—Easy-Writing Royals—can match the present-day demand for quick, accurate, letter-perfect typing.

Your operators will confirm that Royal is the lightest, easiest action; that it produces finer, error-free typing, faster.

Royal's superior performance can not be duplicated!

Shift Freedom, Touch Control*, Finger Comfort Keys, and more than a score of other effort-saving improvements are exclusive with Royal—available on no other make of typewriter!

Invite a Royal demonstration. In your own office . . . Compare the Work!

ROYAL TYPEWRITER COMPANY, INC.
2 Park Ave., N. Y., Factory: Hartford, Conn.
World's largest company devoted exclusively to the manufacture of typewriters. Makers also of the Royal Portable for home and student use.

WORLD'S NO. 1 TYPEWRITER

*Trade-mark for key-tension device.

Copyright, 1937, Royal Typewriter Company, Inc.



198



199



200



201



202



203



204

198. Vacuum Oil Co. Gargoyle Mobiloil Porcelain Sign. One of the most recognizable American corporate brands of the 20th century. 24 x 19 1/2". Significant rust wear along edges. Bends at corners.

300/500

199. Saint Paul Insurance Co. Porcelain Sign. St. Paul, MN. 14 x 20". Wear and scattered light scratches. Porcelain loss along edges.

150/300

200. Pair of USS Cyclone Fence Enamel Metal Advertising Signs. 13 1/2 x 4 1/4". Light flaking of enamel at edges.

150/250

201. Pair of Vintage Tobacco Signs. Including: Lucky Strike Cigarettes cardboard stand-up sign (R.J. Reynolds Co., Richmond, VA), 19 1/2". - M.A.C. Cigars tin sign (Celestino Fernandez Co., Milwaukee, WI, ca. 1910s), 10 x 14". Both with wear at edges; scattered light scratches. Good vintage appearance.

150/300

202. Northwestern Mutual Life Insurance Tin Sign. Passaic Metal Ware Co., ca. 1920s. 21 x 31". Colors crisp and bright.

400/600

203. Grace Sign & Mfg. Co. Grace-Brite Firestone Vertical Tin Sign. St. Louis. Height 71". Denting along edges.

250/400

204. Standard Oil Co. of California Porcelain Sign. New York, ca. 1940s. 30 x 12". Some chips to porcelain along edges.

200/350



205



206



207



208



209



210



211

205. **Bicephalic Wonder Sideshow Banner.** Circa 1970s/80s. Painted canvas banner depicts a two-headed baby attended to by a nurse and doctor. 99 x 66". Expected wear from age and exposure.

500/750

206. **The Palace Hotel / Missoula, Mont. Embossed Tin Sign.** Black tin sign with embossed yellow lettering advertising the hotel's "comfortable rooms \$1.00 and up." Professionally framed, 29 x 11". Scattered light scratches.

500/700

207. **Electrolux Sales and Service Sign.** Hanging vintage acrylic sign. 24 x 49". Very good.

50/150

208. **Harrah's Casino Lighted Table Limit Sign.** Small tabletop metal and acrylic electric plug-in sign, indicating the game carries a minimum of \$100 and maximum of \$3,000. 9 x 6 1/4". Working.

50/150

209. **Pepsi-Cola Bottle Cap Metal Sign.** St. Louis: Stout Sign Co., ca. 1950s. Metal sign in the form of a bottle cap, boldly printed with Pepsi's red, white and blue colors. Diam. 30".

400/600

210. **Lot of Pepsi Cola Co. Bottle Carriers and Bottles.** Including: Two wooden bottle carriers, ca. 1920s. Company logo on both is faded but legible. Height 11". Previous owner's name is scrawled in pencil on the side of one carrier. - Three metal bottle carriers, Union Products, ca. 1940s. Height 10" - One cardboard bottle carrier, ca. 1950s. 8 1/2 x 16 1/2 x 12". Staining throughout. - 12 glass bottles which with various designs. Varying dates. Varying heights; 6" - 11".

200/300

211. **Lot of Vintage Pepsi Miscellanea.** Including: Fifteen (15) advertisements ranging from 1950s-1960s of varying size. - Wire Pepsi rack. - Two (2) hanging wall plaque displays on wood circa 1970s. 19 1/2 x 9 1/2".

50/100



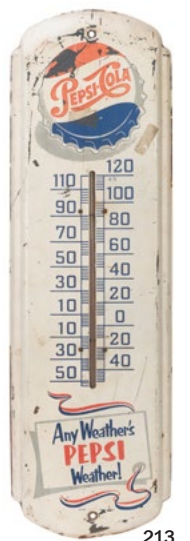
212



214



215



213

212. **Pepsi Cola Co. Light-Up Sign.** Circa 1960s. 6 x 15 x 5". Wear to paint on both sides. Metal areas slightly rusted. Working.

50/150

213. **Pepsi Cola Co. Tin Advertising Thermometer.** Retains the original box. 27 x 8 1/2". Fading and scratching.

150/300

214. **Pepsi Cola Co. Tin Sign on Metal Frame.** 6 1/2 x 38".

100/200

215. **"Say Pepsi Please" Metal Door Advertisement.** St. Louis: Stout Sign Co., ca. 1960s. Mounted on later metal brackets. Paint bright and colorful. 5 x 30 1/2". Classic design.

100/200

216. **Lot of Pepsi Cola Co. Items.** Including: Two advertising trays. 10 1/2 x 14". Age-related wear to both. - Pepsi Cola Co. wall hanging wooden knife holder with knives, ca. 1970s. Height 13". Knives show rust. - Pepsi Cola Co. tin badge on cardboard mount. Philadelphia Badge Co. Philadelphia, ca. 1960s. Diam. 9". - Pepsi Cola Co. toy drink dispenser, ca. 1950s. Stickers are original. 9 1/2 x 5 x 10". Cracking and fading to stickers. Working. - Pepsi Cola Co. coaster, ca. 1940s. Diam. 4 3/4". - Pepsi Cola Co. bottle opener, ca. 1940s. Height 4 3/4".

200/300

217. **Hand-Painted Grocery Store Sign with Pepsi Advertisement.** Circa 1950s/60s. Painted plywood. 48 x 24". Exposed nail points on sign verso.

200/300

218. **Oasis EBCo. Mfg. Co. Water Fountain with Pepsi Decal.** Columbus, OH. Height 44". Requires third party transportation.

100/200

219. **Coca-Cola Billiards Wall Clock.** Circa 1970s. Diameter 14". Working.

60/90



216



217



218



219



220



221



224



225

220. Clem's Cola Metal Advertising Sign. Springfield, MO: W.F. Robertson Steel & Iron Co., ca. 1940s. Single-sided embossed tin sign for the Arkansas soda. Tagline referencing the New Deal. 32 1/4 x 36". Heavily bent, paint peeling and chipped. Unrestored/as-is. Scarce.

200/300

221. Enjoy Orange Crush Double Sided Flange Sign. A.M.D. Co. Metal advertising sign with the iconic green, orange, and white colors. 18 x 14". Oxidation to edges with few small chips to paint and metal.

400/600



222



223



226

222. Donasco Dr. Pepper Tin Sign. Circa 1940s. Paint on image crisp and bright. 54 x 30". Significant rust and age-related wear along edges.

400/600

223. Nichol Kola Embossed Tin Sign. 57 x 33". Wear from outdoor display.

100/200

224. Pizza Hut "Pizza Pete" Wooden Mascot Figure. Circa 1960s. Pizza Pete was the franchise's original mascot. Sign would have been attached to the outside of the building. Height 60". Wear from outdoor display.

400/600

225. Lot of 3 Metal Advertising Beer Trays. Including: Utica Club (West End Brewing, Utica, NY, ca. 1940s) Diam. 12". - A. Gettelman Brewing Co. (Milwaukee, WI, ca. 1950s) Diam. 13". - Hensler's Popular (Joseph Hensler Brewing Co., Newark, NJ, ca. 1950s) Diam. 13". Paint on all three trays crisp and bright.

250/450

226. [Coca-Cola] Eleven Coca-Cola Serving Trays. Coshocton, OH: American Art Works. Includes six trays from the 1950s and 1960s, plus five reproduction trays from the 1990s. [Also with:] a Coca-Cola "Home Town Run & Festival 1985" leather duffle bag. Each, 13 x 10 1/2". Occasional surface scratches, else very good.

80/125



228



229



230



231



232

227. Coca-Cola Folding Wooden Chair. Snyder Chair Co., ca. 1940s. Stenciled with the lettering "Hope Fire Co. Bingo Hall" on the back-seat rest, "Drink Coca-Cola" on the front. Height 35".

100/200

228. Lot of 4 Havana Post Metal Advertising Plates. Circa 1905. Diam. 10". Paint on all four plates crisp and bright.

450/800

229. Carl Bliese Staple & Fancy Groceries Metal Advertising Tray. Wausau, WI, ca. 1930s. 16 1/2 x 14". Light denting at upper image. Tape residue on tray verso. Paint on tray crisp and bright.

150/250

230. American Can Co. Cunningham's Ice Cream Metal Advertising Tray. Maywood, IL, ca. 1910s. 18 1/2 x 15". Light flaking at left edge. Paint on tray crisp and bright.

300/400

231. Jno. T. Barbee & Co. Distillery Metal Advertising Tray. Louisville, KY. 16 1/2 x 14".

200/400

232. Valentin Blatz Brewing Co. Old Heidelberg Framed Relief Beer Advertisement. Milwaukee, WI, ca. 1930s. Carved from chalk. 36 x 22". Light age-related wear. Paint is crisp and bright.

900/1,400

233. John Harvey & Sons Bristol Cream Sherry Standee Advertisement. Bristol, UK. Tin on cardboard. Depicts a bottle of Harvey's Bristol Cream Sherry beside a rendering of a busy dock, circa 1796. 15 x 11".

80/125

234. Lot of 4 Salame di Milano Hanging Advertisements. Italy, ca. 1910s. Pressed cardboard with raised/embossed borders. 13 1/4 x 18 1/2".

100/200



227



233



one of four

234



235



240



242



243



244



245



236



237



241

235. Independent Milwaukee Brewery Tin Braumeister Pilsener Beer Advertisement. Milwaukee, WI. Professionally framed. 35 1/2 x 22 1/2". Small crack at left side of frame.

650/900

236. Valentin Blatz Brewing Co. Die Cut Cardboard Advertisement. Milwaukee, WI, ca. 1940s. Professionally framed. 38 x 14". Wear to lower portion of advertisement.

250/450

237. Plaum Clothing Co. Framed Die Cut Calendar. Milwaukee, WI, ca. 1900s. Framed, 21 x 23 1/2".

350/500

238. Milwaukee Herald Carrier Boy Vintage Wall Calendar. Milwaukee, WI, ca. 1920s. Printed for calendar year 1927. Depicts a young woman holding a bouquet of flowers peeking out from under a parasol. 15 x 12".

150/300

239. Castle Hall Twins Cigars Hanging Advertisement. Circa 1900s. Depicts a stork carrying two infants balanced on a scale to a lakeside castle. Professionally framed. 11 1/2 x 13 1/2".

150/300

240. DuBois Brewing Co. DuBois Budweiser Beer Serving Tray. DuBois, PA. Paint is crisp and bright. Diam. 12".

200/400

241. CASSANDRE, A.M. (French, 1901-1968), after. Dubonnet Co. Card Mat. Circa 1930s. Classic illustration of a man drinking Dubonnet Aperitif. 19 x 23". Wear at center from vertical folding.

150/300



239



246



247



248



249

242. Great Atlantic & Pacific Tea Co. The Home Guard Advertisement. Montvale, NJ, ca. 1890s. Contemporary frame. 29 x 15 3/4". Small chip at upper left-hand side of image.

200/400

243. Pair of Vintage Calendars. Including: Thos. D. Murphy Co. 1915 calendar. Red Oak, IA. Features print in window titled Day is Dying in the West. 12 x 12". Wrapped in plastic and mounted on white cardboard. - C.G. Bowers Groceries & Confectionery Co. 1941 calendar. Taneytown, MD. 16 x 8". Some discoloration. Wrapped in plastic and mounted on white cardboard.

50/100

244. A Dangerous Profession. RKO, 1949. Cardboard standee for the film noir starring George Raft, Ella Raines, and Pat O'Brien. Colors crisp and bright. Framed, 60 x 30". Chipping and losses at corners and edges.

200/300

245. Crüwell-Tabak Co. "Jnka" Standee. Bielefeld, Germany, ca. 1920s. Color lithograph standee, on cardstock, advertising the German tobacco brand, with an illustration of an American Indian. Printed in celebration of the company's 150th year in business. 15 x 9 1/2". Some wear along edges, in overall good condition. A.

100/200

246. Keerlyk / Clay's Keukenstroop Poster. Netherlands, ca. 1930s. In-store "point of purchase" lithograph poster, on cardstock, advertising the treacle-like syrup used on Dutch pancakes. 17 x 11 1/2". Minor wear along edges. A.

80/150

247. Fala. Paris: Joseph-Charles, ca. 1930s. In-store "point of purchase" lithograph poster, on cardstock, advertising the company selling yeast, alcohols, and other items used in baking bread and pastries. Doughboy-type chef mascot holds a baguette. Crisp colors. 16 x 11 3/4". Wear along edges. A.

100/200

248. Liberto Jeans Tin Sign. Circa 1950s. Marked "Rivers Product" lower right. Embossed tin sign advertises the popular Italian denim brand. Six brawny men play tug of war with a pair of jeans which hasn't ripped apart. 13 x 7 1/2". Wear along edges. Some scratching and discoloration.

100/200

249. Collier's Magazine / The Heart Has Wings. 1937. Aviation-themed window card advertises Faith Baldwin's novel The Heart Has Wings, serialized in Collier's the same year Amelia Earhart disappeared. 16 x 11". Light staining at bottom left corner. Wear along edges. Crease at upper left corner. B+.

100/200



250



251



253



255



252



256



254



257



260



258



259



261



262



263

250. Macon / Beaujolais Wine Poster. Lyon: Gougenheim, ca. 1950s. Lithograph in-store "point of purchase" poster advertising Beaujolais wine manufactured in the Macon region of France. 10 x 14 1/4". Bumping at corners. B+.

100/200

251. Bavarian Brewing Co. Bavarian's Old Style Poster. Covington, KY, ca. 1950s. Charming winter-themed advertising poster depicting a snowman in a deer hunter's cap holding two glasses of Bavarian's Old Style on a platter made of snow. 31 x 14". Minor edgewear. Linen backed. B+.

125/225

252. PROVONSHA, Gordon (American, 1909-1956). Forest Lawn Life Insurance Co. Poster. Bakersfield, CA, ca. 1950s. Fishing-themed insurance advertising poster depicting a father and son showing off their catch of the day. 14 x 23 1/2". Minor faults at corners. Linen backed. A-/B+.

200/300

253. Amoco Corp. "Join the American Party!" Poster. USA, ca. 1940s. Wartime patriotic poster urging customers to support the war effort by using Amoco gas. 44 x 29 1/2". Minor repaired short tears at edges. Linen backed. A-.

250/350

254. George, Grover. George / Supreme Master of Magic. Billboard Poster. Cleveland: Otis Litho., ca. 1922. Billboard (approx. 108 x 204"). Stone lithograph poster bears a central bust portrait of the Ohio-born magician, flanked on either side by an elaborate Egyptian sarcophagus on the left and a large menacing devil on the other. The pyramids of Egypt and a faint Asian scene fill out the balance of the poster. Losses to left side of image and along folds. Linen backed. B-.

1,000/2,000

255. Shell Oil "Outboards Love Shell" Advertising Poster. Circa 1950s. Petroleum advertising poster depicting a motorboat smiling and looking up at the Shell logo, the brand of gasoline fueling its outboard motor. 51 x 35". Minor repaired tears at edges. Linen backed. A-.

250/350

256. Bosch Brewing Co. Bosch Beer Poster. Houghton, MI, ca. 1950s. A six pack of Bosch premium beer bottles in a red package set against a green background. 13 1/2 x 16 1/2". Expertly repaired tears; scattered abrasions. Linen backed. B+.

100/200

257. Fitger's Brewing Co. Nordlager Beer Poster. Duluth, MN, ca. 1948. Small poster with text in red and black. 9 1/4 x 17 1/2". Repaired loss to upper left corner. Light spotting. Linen backed. B+.

60/90

258. Universal Distillers Inc. Old Tavern Gin Poster. Los Angeles, ca. 1930s. Silkscreen. A bottle of Old Tavern gin is set against a dark background beneath the company's logo. 18 x 13". Repaired tears and small losses at edges. Light cracking to silkscreened ink. Linen backed. B+/B.

150/250

259. Consolidated Wine & Spirit Corp. Silver Lining Distilled Gin Poster. Los Angeles, CA, ca. 1930s. Colorful Art Deco-style design depicting a bottle of Silver Lining gin. 19 x 14 3/4". Linen backed. A.

150/250

260. Bosch Brewing Co. Beer / "Have a Shish keBosch". Houghton, MI, ca. 1950s. Summer barbecue themed advertisement depicting an overflowing glass of Bosch beer in front of a shish kabob. 14 1/4 x 16". Repaired tears and pinholes in upper corners and edges. Linen backed. B+.

100/200

261. Wolf's Head Motor Oil Poster. Tampa, FL. Iconic wolf's head logo in red with the legend "We Appreciate Your Business" at bottom. 22 x 18". Few spots of discoloration. Linen backed. A-.

80/125

262. Sinclair Oil / New Sign of Good Car Care. Indianapolis: Pratt Poster Co. Mid-century service station poster with the American oil brand's logo on a sign, against a light green background. 46 x 31". Faint old folds. Linen backed. A.

200/300

263. Arend Balster's Jr. Hardware and Implements Wall Calendar. Scotch Grove, IA, ca. 1920s. Wall calendar for 1921 manufactured by one of Iowa's most prestigious proprietors of general goods, depicting a smiling young woman in a blue dress. Signed "Williams." Matted. Framed, 35 x 14 1/4". Colors faded. Creases and other wear to image. Not examined out of frame. B-.

200/300



264



265



266



267



268



269



270



271

264. F.D. Radeke Brewing Co. Poster. Kankakee, IL, ca. 1910s. Lithograph advertisement depicting a smiling young woman wearing a wide hat with flowers piled atop it. Matted. Framed, 27 1/2 x 19 1/2". Creases to upper left corner. Not examined out of frame. B.

200/300

265. F.F. Pulver Co. Foster's Hose Supporters Celluloid Advertising Sign. Rochester, NY, ca. 1920s. Advertised as a "Pulveroid" sign, "the lightest and most brilliant indoor sign made." Attractively framed and matted, 22 x 13 3/4". Not examined out of frame. A.

400/600

266. Die-Cut Chromolithograph Advertisement. Circa 1910s. Art Nouveau-style dragonfly wing motif frames an oval-shaped image depicting a young, dark-haired woman with a red rose in her hair. Crisp colors. Matted. Framed, 23 x 18". Some wear along edges. Not examined out of frame. B+.

200/300

267. Die-Cut Chromolithograph Advertisement. Circa 1910s. Art Nouveau-style smoke motif frames an oval-shaped image of a blue-eyed beauty in profile, a single burgundy flower at her chest. Vivid lithography. Framed and matted, 23 x 18". Wear along edges. Small pieces missing at upper and lower right side. Not examined out of frame.

200/300

268. Die-Cut Chromolithograph Advertisement. Circa 1910s. Art Nouveau-style design which frames an extravagantly dressed young woman emerging from behind a green curtain. Vivid lithography. Framed and matted, 23 1/2 x 17 1/2". Light wear to edges. Not examined out of frame.

200/300

269. United States Fidelity & Guaranty Co. Wall Calendar. Baltimore, MD, ca. 1910s. Lithograph calendar for 1911 depicting an elaborately dressed young woman. Framed, 23 x 16 1/4". Not examined out of frame.

200/300

270. Messett's Musical Entertainers Minstrel Poster. Kansas City, MO: Quigley Litho Co. ca. 1920s. Poster depicts a gross caricature of an African American man holding an umbrella with numerous holes in one hand and an old, worn top hat in the other. Framed and matted, 48 1/2 x 21". Not examined out of frame.

600/800

271. DESCH, Frank (American, 1873-1934) Heppell Bros. Insurance Co. Wall Calendar. Dunkirk, NY, ca. 1910s. Lithograph calendar for 1913 with the image *In Meditation Sweet*. Framed, 42 x 25". Not examined out of frame. B+.

300/500



272

272. Coca-Cola / Here's to our G.I. Joes. New York: Snyder & Black, 1944. World War II era Coca-Cola poster depicts two ladies enjoying Cokes, pointing to Europe on the globe. 19 1/4 x 35 5/8". Removed from original cardboard backing and mounted to linen. Restored small holes and tears around edges and parts of image. B+.

700/900

273. Coca-Cola "Why Grow Thirsty" Cardboard Sign. Chicago: Edwards & Deutsch Litho Co., ca. 1940s. Lithograph depicts a young girl with a Coca-Cola in her hands and a book entitled "How to Grow Roses" tucked under her arm pondering a trio of rose plants. 30 1/2 x 59 1/2". Crease down center of image. Staining and spotting throughout. Horizontal scuff at bottom left. Scuffs to frame. Not examined out of frame. Large version of a classic Coca-Cola ad campaign. B-.

400/600

274. CHRISTY, Earl (American, 1882-1961) E.E. Klein General Merchandise Wall Calendar. Lithograph calendar for 1926 depicting a stylish young woman in flapper dress against a dark background. Created to advertise Selz shoes. Framed and matted, overall 39 x 14 1/2". Scattered tears and discoloration at edges of image. B+/B.

500/800

275. BOCCHINO, Vincent. Lefèvre-Utile Co. Advertising Poster. Paris, ca. 1910s. Lithograph poster advertising the brand of biscuits, depicting a mother with her two small children, one of whom is carrying a puppy. 28 1/2 x 21 1/2". Old folds. Linen backed. B.

600/800

276. BOUGEREAU, William Adolphe (French, 1825-1905), after. H.F. Corbin & Co. "Nymphs and Satyr" Whiskey Advertisement. Cincinnati, ca. 1890s. Lithograph on paper. Depicts a group of young nymphs attempting to pull a struggling satyr into a lake. Matted. Framed, 34 1/2 x 26". Good condition. A.

500/700

Produced as a tie-in with H.F. Corbin's Hoffman House Whiskey Brand. At the time, Nymphs and Satyr was displayed in the bar of the Hoffman House Hotel and was considered the brand's unofficial mascot.



273



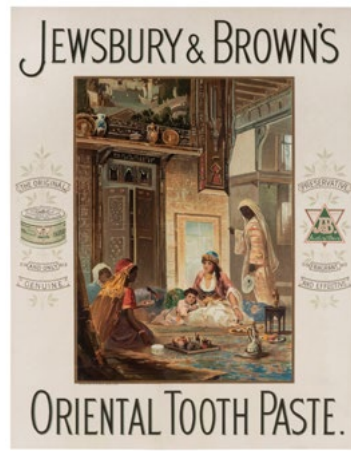
274



275



276



277



282

277. Jewsbury & Brown's Oriental Toothpaste Poster. Manchester, UK, early 20th century. Lithograph advertising poster depicting a group of women and one child in a room decorated in the Orientalist style. 28 x 23". Old folds. Linen backed. B+.

250/350



278

278. Trio of B.F. Goodrich Formula One Posters. Including: Poster depicting a B.F. Goodrich racecar against a background of blurred lights. "This is where we put the Comp in Comp T/A" printed at top. 1990. Good condition. - Poster depicting a racecar emblazoned with the Miller High Life logo. "1989 Champion 24 Hours of Dayton" printed at top. 24 x 36". - Poster depicting an action shot of two cars neck and neck on a racetrack. "The guidance system for America's fastest rockets" printed at bottom. All posters 24 x 36". Unmounted. A.

100/200



279



280

one of two

279. ELVGREN, Gil (American, 1914-1980) Motor Cargo. Inc. Pin-Up Girl Poster. USA: B&B [Brown & Bigelow], 1950s. Poster depicting a pin-up girl in cowgirl outfit, overprinted for the Lisle, IL company. Linen backed. 23 1/2 x 19". Minor corner wear and blemishes outside image. Linen backed. A-.

200/400

280. Original Pin-Up Illustration and Printer's Proof. 1940s/50s. Two pieces, including: original illustration of a woman in green dress and sun hat, signed "William Brucker." Gouache on board. 24 x 20". - Lithograph printer's proof, Reflection, by Frederick Sands Brunner. 21 1/2 x 15". A.

150/250

281. Lot of Three Advertising Stock Posters. Including: The Weiller Co. Philadelphia, ca. 1940s. Pin-up lithograph of a young woman in a blue dress holding a beer. Designed by Albert Fisher. 23 1/4 x 17 1/2". Linen backed. A. - The Weiller Co. Philadelphia. Lithograph of two boxers in a ring. Image is set against a larger white background with two large blocks of red above and below. 24 x 18 3/4". Linen backed. A. - Smaller version of the above image without the aforementioned background. 13 1/2 x 13 1/2". Linen backed. A.

200/400



281



282. ANONYMOUS (Albert Fisher?). Mid-Century Beer Advertising Poster. Philadelphia: Weiller Co., ca. 1950s. Offset lithograph poster of a man happily raising a frosty pint of beer. Red, white, and blue background without type added. 35 1/2 x 40 1/2". Scattered small spots of over-painting. Linen backed. B+.

250/350



283

283. French-Vietnamese "Les As" Cigarettes Poster. Marseille: Guiraud, ca. 1940s. Colorful lithograph advertising poster with playing card design, featuring Aces on the cigarette pack. 23 1/2 x 29 1/2". Linen backed. B+.

100/200



three of five



284

284. Five Clyde Beatty-Cole Brothers Circus Posters. Circa 1960s. Including equestrienne; lion tamer; clowns (2); and tiger. Half-sheets (generally 28 x 21"). Some designed by Roland Butler. Unmounted. Scattered wear including wrinkled edges, losses, and folds. Condition B+/B-.

150/250

285. Satin Skin Powder / Skin Cream Poster. Detroit, MI, ca. 1910s. Color stone lithograph depicting a woman holding a paper fan against a bright orange and red background. 45 1/2 x 31 1/2". Linen backed. A.

200/400



285

286. Harley-Davidson American Bicentennial Poster. 1976. Offset lithograph, advertising Harley-Davidson motorcycles and celebrating America's bicentennial. 40 x 27 1/2". Linen backed. A.

200/400



287

287. Pair of Early Harley-Davidson Motorcycle Photographs. Circa 1910s. Photographs depict two men and a woman taking turns posing on a Harley-Davidson motorcycle. On cabinet-format mounts. 10 x 8". Bumps to corners.

150/250



286



one of two

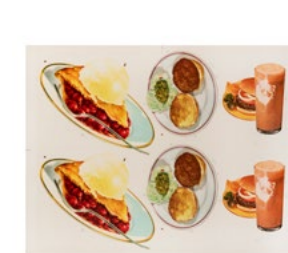
288

288. Two Food/Beer Printer's Proof Posters. 1950s. Including: Proof lithograph, likely to be used in a soda fountain or ice cream shop, depicting a young man and woman enjoying a strawberry sundae and a milkshake, leaning against diner chairs. Printer's notes to man's right. 40 x 28". Linen backed. A. - Printer's lithograph (The Weiller Co., Philadelphia, ca. 1950s.), depicting a hunting dog emerging from a pond with a duck in its mouth. Name "Myles Fargens" at bottom left of image. 30 x 32 1/2". Linen backed. A.

100/200

289. Lot of Two Diner Poster Printer's Proofs. Including: Printer's sample, ca. 1950s. Likely created for overhead menu boards with two images of each item. 23 x 28 1/2". Linen backed. A. - Printer's sample. The Weiller Co., Philadelphia, ca. 1950s. Overhead menu board image depicting a burger and fries in classic 1950s style. 26 1/2 x 18 3/4". Linen backed. A.

100/200



289



290



295



291

290. Great Atlantic & Pacific Tea Co. Baby with Rooster Advertisement. Montvale, NJ, ca. 1880s. Depicts a crying infant holding onto a struggling rooster. 11 x 9". Linen backed. A.

150/300

291. Trio of Vintage French Advertisements. Including: Bledine Baby Cereal advertisement, France, ca. 1930s. Image by French artist Jean D'ylen. 17 x 12 3/4". Linen backed. A. - Revillon Freres fur coat advertisement, Paris, ca. 1930s. Image in the Art Deco style by French artist Paul Colin. 17 x 14". Linen backed. B. - Persil detergent advertisement, France, ca. 1930s. 15 x 14 1/2". Fold at upper left corner. Linen backed.

150/300



292

292. Pair of Travel Advertisements. Including: Cunard Line RMS Aquitania advertisement, Southampton, UK, ca. 1930s. Colorful image depicts the beloved ocean liner at sea on a bright, sunny day. 16 1/4 x 13". Linen backed. - Sanremo, Italy travel advertisement, ca. 1930s. 17 x 14". Linen backed.

80/150



293

293. Lot of Four Vintage American Advertisements. National Carbon Company, Inc. Eveready advertisement, Cleveland, OH. A small child casts the shadows away with a flashlight powered by Eveready. 18 x 12 1/2". Crack in image to left of child. Linen backed. - Royal Typewriter Co. advertisement, New York, ca. 1930s. Advertisement for one of America's most beloved typewriter companies. 17 1/2 x 14 1/2". Linen backed. - Coca Cola Co. Marion Davies advertisement, Atlanta, GA, ca. 1910s. One of the first advertisements to feature the rising Hollywood starlet. Linen backed. 20 x 15". - Ford Motor Co. magazine advertisement, Dearborn, MI, ca. 1940s. Eye-catching image presents the Ford Super Deluxe inside of a crystal ball, proclaiming it the car of the future. 16 1/2 x 13". Linen backed.

100/200



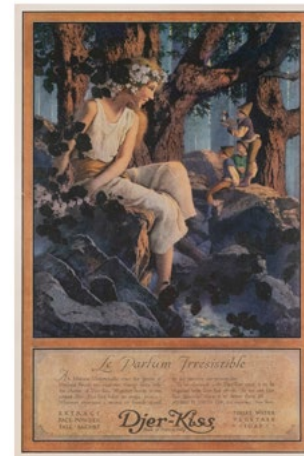
294

294. PHILI. Pair of St. Raphaël Quinquina Advertisements. France, ca. 1930s. Christmas-themed Art Deco-style magazine advertisements for St. Raphaël's Quinquina, the oldest French Quinquina still in production. 17 1/2 x 14". Linen backed. A.

100/200

295. Great Southern Railways Co. Decal. Ireland, ca. 1930s. Lively and colorful design. 17 x 16". Cracking and chipping along edges. Some small missing pieces in body. Linen backed.

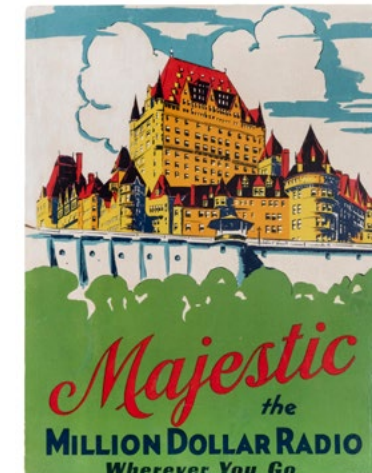
100/150



296



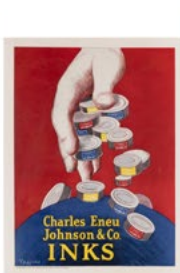
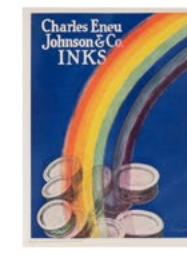
297



298



299



300

296. PARRISH, Maxfield (American, 1870-1966). Djer-Kiss Magazine Advertisement. France, 1918. A colorful advertisement depicts a nymph with flowers in her hair seated upon a rock, smiling at three young men nearby. 19 x 14". Closed tear at right side. Linen backed. A.

100/200

297. Vintage Japanese Noodle Advertisement. Kameyana Sangyo Kabushiki Uaisha, ca. 1930s. Colorful Art Deco styled advertisement for a Japanese food delivery service, proclaiming that only the finest people order from this restaurant. 18 3/4 x 9". Some discoloration along bottom edge. Linen backed. A.

100/200

298. Majestic Corp. Radio Magazine Advertisement. Chicago, IL, ca. 1930s. Brightly colored advertisement featuring Quebec's famous Château Frontenac Hotel. 20 x 15 3/4". Significant wear along edges. Folds. Linen backed. B.

60/90

299. CAPPIELLO, Leonetto (French, 1875-1942). JOB Cigarette Papers Window Card. Paris, 1933. Color lithograph on cardstock depicting a caricature of a Middle Eastern man luxuriating with a cigarette in hand. 12 1/2 x 8 1/2". Light bumps along edges. With grommets and string hanger, as issued. A/A.

400/600



301

300. CAPPIELLO, Leonetto (French, 1875-1942). Lot of 7 Charles Eneu Johnson & Co. Inks Advertisements. 1925-28. Seven lithograph advertisements, five designed by Cappiello, two by other designers. Sizes generally 15 1/2 x 12 1/2". All linen backed. Condition generally A/B+.

200/300

301. LOUPOT, Charles (French, 1892-1962). St. Raphaël Quinquina Point of Purchase Sign. France, 1937. Hanging sign on card depicting two waiters, one in red and one in white. 9 3/4 x 7 1/2". Bumping and spotting to image. B+.

250/350



302 one of three



303



304



305

302. **Princess Pat Duo-Tone Rouge Cardboard Standees.** Chicago, IL. Including: One cardboard standee depicting company mascot "Princess Pat" also advertising New York mayor James J. Walker's *Opportunity Hour*. 26 1/2 x 19 3/4". Bumping to edges. Some discoloration. B-. - Two cardboard standees, both depicting Princess Pat beside a container of duo-tone rouge. 26 1/2 x 21". Significant bumping and wear to edges on both pieces. Discoloration.

100/200

303. **Lot of Four French Magazine Advertisements.** Including: Le Lido Cabaret advertisement. Paris, ca. 1930s, depicting a cabaret dancer girl with brightly colored hair. Signed by unknown artist. 14 1/2 x 12 1/4". Edgewear. Linen backed. B+/B. - Lentheric perfume magazine advertisement. Paris, ca. 1930s. Art Deco design depicting the company's Shanghai perfume. 16 1/2 x 12 1/4". Scattered light scratches to image. Linen backed. A. - *Les Chapeaux* magazine cover. Paris, 1926. Art Deco design depicting two stylish young women. 14 3/4 x 11". Bumping along edges. Linen backed. A-. - *Toujours Moi* by Corday perfume advertisement. Paris, ca. 1920s. Surrealistic Art Deco design depicting flowers growing out of a mannequin's head-shaped flowerpot set at the edge of a cliff. Signed by unknown artist. 16 x 12 1/2". Wear to upper left corner. A-.

100/200

304. **Lot of Three Vintage American Advertisements.** Including: Fido brand orange crate label. Colorful design features a pit bull puppy. 12 x 15 1/2". Creasing at upper left corner. Linen backed. A. - General Motors Co. Marquette Buick automobile magazine advertisement. Grand Rapids, MI, ca. 1930s. 18 x 14 1/2". Light wear along left edge. Some pitting beneath "Saturday Dealers." Linen backed. A-. - S. Anargyros Corp. Murad Turkish tobacco magazine advertisement. New York, ca. 1900s. Ad depicts three women in Orientalized headdresses. 17 3/4 x 13 1/2". Wear along edges. Creasing and closed tear at lower left. Closed tear on left side. Linen backed. B+.

100/200

305. **Souders, Randy (American, b. 1954). Four Signature Collection Prints.** Including: *Yes, We're Open*, 1984. A small town general store is shown in mid-day, a cat perched upon an old wood stove and a man approaching the store with his dog. Advertisements for Coca-Cola and other brands are visible. Framed, 18 1/2 x 22 1/2". - *Pop's*, 1984. Print depicts the interior of Pop's, a jukebox ready to play and a Coca-Cola advertisement set into the mirror above the bar. Framed, 18 1/2 x 22 1/2". - *Crossroads*, 1984. The general store from *Yes, We're Open* is now closed, the fading light of day casting a soft glow upon the scene. Framed, 18 1/2 x 22 1/2". - *Clip Joint*, 1984. A man sits with legs crossed at the far left of the scene inside of a small town barber shop, its walls covered in old time Americana. Framed, 18 1/2 x 22 1/2".

100/200





306



307



308



309



310



311



312

306. **Caterson & Brotz League Playing Cards.** Philadelphia, ca. 1880s. 52 + J. Joker depicts a bull derailing a locomotive. Blue floral design backs. Lightly to moderately rubbed; corners rounded and slightly curled. Good/very good. Hochman L32. **300/500**

307. **Samuel Hart & Co. Faro Playing Cards.** New York, ca. 1890s. 52. One-way courts. Backs green and red plaid. Square corners. Very good. Housed in a period metal case embossed on the lid with the Jack of Diamonds. Hochman NY42. **300/400**

308. **Samuel Hart & Co. Faro Playing Cards.** New York, ca. 1890s. 52. One-way courts. Backs green with small "s" pattern. AS trimmed to slightly smaller size than the rest of the deck, possibly married from another deck. Light soiling. Hochman NY42. **200/400**

309. **A. Ball & Bro. Faro Dealing Box.** Chicago, ca. 1880s. German silver. Ungaffed. Marked "A. Ball & Bro./Makers/Chicago." Old inscription, mostly illegible but with the date August 1887, scratched into the metal by hand to the underside. Tarnished. 3 7/8 x 3 x 1 5/8". **300/500**

310. **Will & Finck Faro Layout.** San Francisco, ca. 1890s. Oilcloth layout with hand-painted cards in the suit of clubs, on old wooden backing. 16 1/2 x 43". Rubbing and abrasions with some paint loss and discoloration. **500/1,000**

311. **Russell & Morgan Steamboat No. 999 Playing Cards.** Cincinnati: USPC, ca. 1895. 52 + J + OB. Hochman US7b. Green plaid backs. Box rubbed and with tears. Deck very good. **150/250**

312. **Erie No. 57 Playing Cards.** New York: Perfection Playing Card Co., ca. 1895. 52 + J. Gilt edges. Housed in a period leather case with snap closure (leather worn on snap). Joker depicts a barge; as Hochman notes, the deck probably tied-in to the Erie Canal in some way. Hochman PU14. **250/350**

313. **Whitehead & Hoag Celluloid Playing Cards.** Newark, ca. 1925. 52 + J. Housed in a period celluloid case with four ace design. Joker depicts a lit cigar. Faces lightly rubbed. Inner celluloid wrapper split on side. Hochman O5. Uncommon. **250/350**

Whitehead & Hoag was the leading American manufacturer of advertising and political buttons and novelties in the early 20th century.

314. **Waterproof Playing Card Co. Circular Deck.** Boston, ca. 1895. 52 + J + OB. Early circular deck by the Boston maker with an address listed at 50 Bromfield Street. Diam. 3 1/4". Light spotting and edgewear. Box well worn with detached top. Hochman O15. **200/300**

The manufacturer's name, Waterproof, is rather puzzling given that the card are printed on plain paper cardstock, without even an enamel finish.

315. **Globe Playing Card Circular Playing Cards.** Boston: I.N. Richardson, ca. 1880. 52 + J + OB. Suits in four different colors (Clubs are done in green; diamonds yellow; spades black; hearts red). Joker described the advantages of using Globe cards. Diam. 3 1/16". Deck very good; box worn but stable. **200/300**

316. **International Printing Pressmen Circular Advertising / Gift Playing Cards.** N.p., ca. 1930s. 52 + J + EC (blank) + OB. Color lithograph holiday gift deck of circular playing cards issued by the union of the International Printing Press and Assistants. Retains gift slip in box. Original designs for courts; diamonds in blue; clubs in green; spades black; hearts red. Very good. Box worn. Hochman O16. **150/250**

317. **Three Decks of Circular Playing Cards.** Including Arrow Playing Card Co. (52 + J + OB), gilt edges, with Art Deco design of a woman's profile; Arrow Playing Card Co. "Discus" (52 + J + OB), Art Deco seahorse design, gilt edges; Waddington Ltd. "Rio Rita" (52 + J), in a wooden box with sliding cover. Both Arrow decks very good; Waddington worn from use including a few creased cards. **100/200**

318. **Addeck Co. Salesman's Sample Dummy Deck.** New York, ca. 1920s. 52 + J + EC + OB. Promotional "dummy pack" bearing the trademarks and logos of many companies on the faces of the cards which the manufacturer proposed to be issued through F.W. Woolworth. Numerous well-known brands appear on the faces to "give a general idea" of the concept, but not indicating that the companies "have taken space in such edition." Includes Coca-Cola, Firestone, Texaco, Buick, Gillette, Campbell's Soup, Listerine, Heinz, Kellogg's, Pyrex, Buick, Sherwin Williams, His Master's Voice, and many other logos. Parrot Joker. **200/400**



313



314



315



316



317



318



319



320



321



322



323



324



325



326



329



330



327



328



331

319. [Breweriana] **Anheuser-Busch Spanish-American War Political / Advertising Playing Cards.** 1900. 52. Pre-Prohibition brewery deck, issued during the Spanish-American War, with military figures as the courts, including Col. Theodore Roosevelt. Queens represent Liberty, Justice, Columbia, and Our Colonies. Four different beers featured on the Aces. Every pip card bears an illustration of the brewery. Backs printed in red with a gilt-metallic design around the logo. All edges gilt. Hochman W16.

200/300

320. [Breweriana] **Schlitz Milwaukee Beer Advertising Playing Cards.** Milwaukee, ca. 1890s. 52 + EC (coupon) + OB. Early Schlitz advertising deck, the brewery's famous globe logo utilized on the backs, AS, and box. Extra coupon card trimmed. Deck lightly soiled from use; box well worn and lacking end flaps.

200/300

321. [Breweriana] **Lot of 6 of India Pale Ale Advertising Decks.** V.p., ca. 1900s/40s. Including Frontenac India Pale Ale (Montreal: Canadian Playing Card. Co.), 52 + J + OB (box lacks top flap); Whitbread's London Stout IPA (London: Goodall), 52 + OB; Molson & Bros. IPA (London: Goodall), 52 + partial box; Molson & Bros. IPA (Canadian Playing Card. Co.), 52 + J + OB; Boswell's India Ale (Montreal Lithographing Co.); and Whitbread's IPA (Universal Playing Card. Co.), 52 + OB.

200/300

322. [Breweriana] **Goebel Brewing Co. Advertising Playing Cards.** Detroit, MI, ca. 1890s. 52 + OB. All aces advertise the brewery. Engraved illustration of brewery building on box. Three-digit phone number listed on box. Good; loss of top flap to box, 2S chipped.

200/300

323. [Breweriana] **Claussen Brewing Assn. "Tannhaeuser" Advertising Playing Cards.** Circa 1909. 52 + EC + OB. Sparkling gilt edges. Deck advertising the Seattle brewery's gold-medal winning beer, awarded gold at the Alaska-Yukon-Pacific Exposition, 1909. Bottles of beer depicted on all aces. Deck near fine; box lightly rubbed.

125/225

324. **New Hope Whiskey Advertising Playing Cards.** Circa 1910s. 52 (no joker). Deck advertising the Nelson County, KY whiskey distillery. Advertising on the Ace of Spades and backs. Corner of AS creased; other scattered wear.

80/150

325. **Brook Hill Whiskey Advertising Playing Cards.** Circa 1910s. 52 + OB. Deck advertising the Paducah, KY distillery Friedman, Keiler & Co. Uncle Sam sits on a whiskey barrel on the box. Advertising on backs and AS. Deck worn from use with soiled edges and light creases. Scarce.

125/225

326. **Lot of 5 Whiskey Advertising Playing Card Decks.** 1920s/30s. Pre-Prohibition advertising decks for H. Jackson Monogram Whiskey (Jacksonville, FL); Old Bridgeport Pure Rye Whiskey (South Brownsville, PA); William Wolff & Co. Old Government Whiskey (San Francisco); Wm. Lanahan & Son Hunter Baltimore Rye (Baltimore), euchred; and Clarke's Pure Rye Whiskey (Peoria, IL), gilt edges. All 52 + OB. Condition generally good.

200/300

327. **Trio of Antique English Whiskey Advertising Decks.** Including Distillers Company Ltd., Edinburgh "D.C.L." Scotch Whiskey (52 + J + OB), Chas. Goodall. - King George IV Old Scotch Whisky (52 + OB), Universal Playing Card. C. (Leeds). - Claymore Scotch Whisky (52 + OB), Chas. Goodall. Boxes moderately worn; decks generally very good.

125/225

328. **Antique Johnnie Walker Whiskey Advertising Decks.** Three decks of playing cards, 52 + J + OB; 52 + J + OB; and 52 + OB. Titled "Born 1820-Still Going Strong"; "Coaching 1820;" and "Golfing 1820." All with advertising on all Aces. Rubbing to boxes; decks good/very good.

125/225

329. **Four Antique English Whiskey Advertising Decks.** Including William Grant's Scotch Whiskey (52 + 2J + OB). - Dewar's Whisky (52 + J + OB), John Waddington. - Dewar's "Spirit of Empire" (52 + J + OB), Chas. Goodall. - Jamie Stuart Scotch Whisky (52 + OB), Chas. Goodall. Condition varies; good to very good.

100/200

330. **Trio of Gin Advertising Playing Card Decks.** Including Gordon & Co. London Dry Gin (52). - Booth's Dry Gin (52 + OB). - Burnett's White Satin Gin (52 + OB). Good/very good.

80/150

331. **Hard a Port Cut Plug Insert Playing Cards.** New York: H.A. Thomas & Wylie, ca. 1886. 52 + J. Color chromolithographed tobacco insert playing cards on heavy cardstock. Dark green backs lettered in white. 53 different illustrations of voluptuous beauties on the face of each card. "Hard A Port" printed on the face of each card except the Ace of Spades and 8D. Larger cards (approx. 4 x 2 3/8"). Condition generally good or very good. Hochman I3/4.

1,200/1,800

As an insert deck, these cards have been assembled individually and vary in condition. The 3H and 5H have tackholes in the corners; AD with a tackhole at upper edge. Some cards are darkened and have rounded or slightly chipped corners. The Ace of Spades and 8 of Diamonds, not having the tobacco maker's name printed on the face, are Hochman's I4, while the balance of the deck is I3, or with the name on the face.



332



333



334



340



342



336



335



337



341



343



338



339

340. [Tobacciana] Barnes, Smith & Co. Jack O' Diamonds Cigar Playing Cards. Binghamton, NY, ca. 1900s. 52 + OB. Very good; box top flap detached; creasing to five cards.

300/400

341. [Tobacciana] Berning Bros. Winnora 5 Cent Cigar Playing Cards. Cincinnati, OH, ca. 1900s. 52 + EC (advertising card) + OB. Good; wear to box, corner chip to AS.

200/300

342. [Tobacciana] John Rauch's Melrose Cigars Advertising Playing Cards. Indianapolis, ca. 1880s. 51/52. Poor; nine of clubs, nine of diamonds, king of spades repaired with tape. As-is. Suitable as a swap deck.

100/200

343. [Tobacciana] Two English Tobacco Advertising Decks. Including Old English Curve Cut Pipe Tobacco (52 + J + EC + OB), gilt edges, near fine. - Manikins Cigars (52 + J), coupon slip laid in, good/very good, box worn.

80/125

344. Tiffany & Co. Harlequin Transformation Playing Cards. New York, 1879. 52 + OB. Designed by C.E. Carryl. Transformation deck, pip cards with witty captions accompanying occupational, racial, and political designs; courts also humorously depicted: Jack of Clubs with a pug in the crook of his arm, smoking a cigar; King of Diamond plays a banjo; and the King of Spades is badly injured, in a cane, sling, and foot bandage. All gilt edges. Original box. Hochman T4. Beautifully printed, and regarded as the most artistic and skillful American transformation deck.

1,000/1,500

345. Pep Boys Advertising Playing Cards. Two Decks. Circa 1930s. Two decks, red and blue backs, including Deluxe Playing Cards (52 + J + EC + OB) and Deluxe Pinochle Playing Cards (deck sealed, plus "No Joker" card, and original box). Courts custom designed with the Pep Boys Manny, Moe, and Jack. Red back deck with an extra "Crying Towel" joker/coupon. Very good/near fine. Scarce.

150/250



345

332. [Tobacciana] Clown Cigarettes Advertising Playing Cards. Louisville: Axton-Fisher Tobacco Co., ca. 1920s. 52 + OB. Clown mascot on AS, backs, and box. Deck worn from handling; good.

100/200

333. [Tobacciana] Marcee Briar Pipes Advertising Playing Cards. Circa 1910s/20s. 52 + J + OB. Advertising backs, box, and Ace of Spades. Lightly handled with scattered wear to faces and box.

100/150

334. [Tobacciana] Nathan Schloss Havana Cigars Advertising Playing Cards. Circa 1910s/20s. 52 (no joker). Advertising deck for the Cuban cigar distributor Rothenberg & Schloss, based in Kansas City, Denver, and Dallas. Advertising backs and AS. Moderately worn from use and handling.

80/125

335. [Tobacciana] Hignett's "Pioneer" and "Butterfly" Cigarettes Advertising Playing Cards. Two decks, including: - "Pioneer" Cigarettes. London: Chas. Goodall, ca. 1910. 52 (no joker) + OB. Backs brightly printed in yellow and red with a frontiersman by his rifle and axe in a wooded landscape. Moderately worn with soiling and rounded corners. Box skinned on one side. - "Butterfly" Cigarettes. London: Chas. Goodall, ca. 1910s. 52 (no joker) + OB. Cards quite worn from use, some with ink writing to faces; box lacks top flaps.

100/200

336. [Tobacciana] Two Antique Cigar Advertising Decks. Including Anna Held Cigars and Chauncey Olcott Cigars. Both 52 + OB. Anna Held box well worn; decks very good.

150/250

337. [Tobacciana] Lorillard "Splendid" Plug Tobacco Advertising Playing Cards. New York: APCC, ca. 1880s. 52 + J + OB. Early tobacco advertising deck, with crossed flags and red, white, and blue printing on the backs. With "Little Joker" card. Ace of Spades probably added separately, being slightly more worn and yellowed than remainder of deck. Scarce.

200/300

338. [Tobacciana] Two Cigar Advertising Playing Card Decks. Including Cigar Makers International Union "Smoke Union Made Cigars" (Kalamazoo: APCC, ca. 1900s), 48/48 (pinochle deck, complete) + OB [box well worn and lacking end flaps]; and United Cigar Stores Co. "Cigars United" (52 + J + OB), deck sealed in original inner wrapper.

100/200

339. [Tobacciana] Banner Tobacco Co. "Night Watch" Advertising Playing Cards. Detroit, MI, ca. 1890s. 52 + OB. Backs depict the company's muzzled puppy mascot. Very good; skinning to one side of box.

200/300



346



353



354



355



347

346. NYCC Triton No. 42 Playing Cards. New York, ca. 1900s. 52 + J + OB. Scarce back design of an alligator chasing a stereotypical "native" character. Gilt rubbed away from edges; card edges rounded; scattered soiling from wear. Box well worn and lacking end flaps. Good. Hochman NY51.

100/200

347. Coca-Cola "Tastes Good" Playing Cards. Circa 1920s. 52 + J + EC + OB. Backs: Girl with bobbed haircut drinking Coke with a straw, designed by Fred Mizen. Extra card marked "revised 1926." Original box stamped in gilt with a sample of the card mounted on side. Edges green and gilt-streaked. Very good.

500/700



348

348. Coca-Cola Playing Cards. Seven 1940s/50s Decks. Including (2) airplane spotter decks [nurse and telephone operator]; cowgirl; party girl; swimmer; stewardess and others. All 52 + J + OB except stewardess (52 + OB).

150/250



349

349. Coca-Cola Playing Cards. Five Decks. 1940s/60s. Including girl with terrier; snowman; ice skater; girl/"70 years of refreshment"; and "Welcome Friend" ice king. Three 52 + J + OB; two 52 + OB (snowman; terrier).

125/225



350

350. Coca-Cola Playing Cards. Nine Vintage Decks. Bulk 1960s. Various designs, including masquerade party, couple by the fire, surfers, beach party, and others. Two sealed (one with torn cello); all others 52 + J + OB or 52 + OB; surfers 52 + J.

125/225



351

351. Lot of Cola-Cola Collectors Club Playing Card Decks. Including: 79 decks of Coca-Cola Co. playing cards, many of them from the Coca-Cola Collectors Club, ca. 1970s-1990s. Most sealed.

200/300



352

352. Congress 606 Playing Cards / Dog Designs. Three decks, each 52 + J + OB, including "Jerry" bulldog (1907); "Collie" (1920); and "Airedale" (1920). All having gilt edges. Collie somewhat worn from use; others near fine.

100/200

353. Congress 606 Playing Cards / Native American Designs. Four decks, including (2) Rookwood; Shooting the Rapids; and Laughing Water. All 52 + J + OB. Gilt edges. Condition varies, generally very good.

100/200

354. Congress 606 Playing Cards / Pocahontas. USPC, ca. 1900s. 52 + J + OB. Bright gilt edges. Very good; light wear to corners of box. Hochman US6f.

80/125

355. Time Magazine Advertising Playing Cards. 1962. Two decks, in red and olive backs. Both 52 + J + EC + OB. Extra wide and long cards (4 x 2 5/8") with original designs, and advertising text at the bottom of each pip card with puns on playing card and gaming terminology, advertising the magazine as a "winning hand 52 TIMES a year." Near fine. Hochman A17.

100/200

356. [Boston] Posner's Linen Collars Advertising Playing Cards. Circa 1900s. 52 + J + EC + OB. Deck advertising the Boston shirt collar company. Joker with shirt collars falling around a cherub; extra card a dapper gentleman in tuxedo. Advertising on AS, backs, and box. Box held with tape and lacking top flaps, otherwise very good.

150/250

357. [California] Group of Early California Merchants Advertising Playing Cards. Four decks, comprising: Kahn Bros., Oakland, CA, ca. 1910s (52/52). – The New York Cloak and Suit House, Los Angeles, ca. 1920s (52 + J + OB). Gilt edges. – Weinstock, Lubin & Co., Sacramento, 1920s (52 + J + 2 EC). – Holzwasser, Inc., San Diego, ca. 1910s (52 + J + EC + OB). Building facades shown on boxes and backs. Nice lot.

250/350

358. [Chicago-Railroadiana] Cardwell Friction Draft Gear Advertising Playing Cards. Circa 1920s. 52 + J + EC + OB. Deck of playing cards for the Union Draft Gear Co., whose address is listed at the McCormick Building on the box. Gear illustration on joker. Advertising on AS, box, and backs. Very good.

100/200

359. [Chicago] The Hub Advertising Playing Cards. Circa 1920s. 52 + J + OB. Very good; wear to box. Lovely performing poodle joker.

100/200

360. [Chicago] Boston Store Advertising Playing Cards. Circa 1920s 52 + J + EC + OB. Very good; marker price on front of box. Joker advertises the stores "observation tower" in downtown Chicago.

100/200

361. [Chicago] Rothschild & Co. Advertising Playing Cards. Circa 1920s 52 + J + 2 EC + OB. Advertised as "The First Store in the Loop" on box. Very good.

100/200



356



357



358



359



360



361



362



363



364



365

362. [Chicago] **The Hub Advertising Playing Cards.** Circa 1920s. 52 + J + EC + OB. Good; top missing from box. Golfer, baseball player, and tennis player on box and backs; auto mechanic joker.

100/200

363. [Chicago] **Siegel Cooper Co. Advertising Playing Cards.** Circa 1890s. 52. Printed to celebrate the company's expansion into New York City in 1896 and depicts the original version of Daniel Chester French's *Statue of the Republic* shortly before its destruction by fire that same year. Very good.

100/200

364. [Chicago] **Mandel Bros. Advertising Playing Cards.** Circa 1920s. 52 + J + 2EC + OB. Very good; light wear to box.

80/125

365. [Chicago] **C.F. Adams Furniture Co. Advertising Playing Cards.** Circa 1920s. 52 + J + 3 EC + OB. Very good; some wear to box.

80/125



366



367



368



369

366. [Cincinnati] **Eagle White Lead Co. Advertising Playing Cards.** Circa 1910s/20s. 52 + J + EC + OB. Advertising on joker, box, backs, and AS; company headquarters depicted on extra card. Box darkened on lower back side, else very good.

100/200

367. [Dairy] **Page Dairy Co. Advertising Playing Cards.** Circa 1910s. 48 (complete) + J + EC + OB. Advertising pinochle deck for the Toledo-based dairy. Advertising joker ("Kleen-Maid" Ice Cream), box, AS, and backs; extra card depicts company buildings across Ohio. Deck with some wear from handling; box rubbed and skinned.

100/200

368. **French-Bauer Ice Cream Advertising Playing Cards.** Cincinnati, OH. 52 + J + EC + OB. Joker advertises French-Bauer "Autocrat" brand ice cream. Gilt edges (rubbed). Good/very good; soiling and wear to cards from use.

80/125

369. [Denver] **Rhodes Ranch Egg Co. Advertising Playing Cards.** Chicago: Western Press, ca. 1900s. 52 + J + OB. Advertising deck for the Denver egg, poultry, and produce company, listing their address as 1525-27 Market St. Top flap of box detached, otherwise very good.

100/150

370. [Horses] **Four Horse Supply Advertising Decks of Playing Cards.** American, ca. 1900s/20s. Including: Dr. A.C. Daniels' Horse & Dog Medicines (52 + OB); Bryden Horse Shoe Co. (Catasauqua, PA) "Boss" Steel Shoes (52 + OB); 5/A Horse Blankets / Wm. Ayers & Sons Philadelphia (52 + J + OB); and 5/A Horse Blankets / "Highest Medal Awarded at Pan-American Exposition 1901" (52 + OB), gilt edges. Both 5/A decks employ the company logo on every card. First three decks well worn from use; fourth deck very good, gilt somewhat rubbed.

200/300

371. [Indiana] **Rub-No-More Soap Advertising Playing Cards.** Circa 1910s/20s. 52 + J + OB. Deck advertising the Fort Wayne, IN soap company. Joker depicts an elephant dressed in fine clothes and carrying a basket with a box of soap; backs elephants washing each other surrounded by the product. Trick-taking labels added to card faces. Box collapsed and lacking one side panel; deck very good. Scarce.

200/400

372. [Indianapolis] **E.C. Atkins Saws Advertising Playing Cards.** Circa 1900s. 52 + J + EC + OB. Advertising deck for the Indianapolis based saw company. Cartoonish advertising illustration on joker with rhyming slogan; advertising on extra card, backs, AS, and box. Gilt edges (rubbed on higher/euchre cards). Old writing on EC. Generally very good.

200/300

373. [Indianapolis] **E.C. Atkins Saws Advertising Playing Cards.** Circa 1900s. 52 + J + EC + OB. Advertising deck for the Indianapolis based saw company. Depiction of company headquarters on joker; advertising on extra card, backs, AS, and box. Small sticker on box side; very good.

100/200

374. [Indianapolis] **Van Camp Pork and Beans Advertising Playing Cards.** Indianapolis, ca. 1910s. 52 + J + EC + OB. Joker with a can of Van Camp's Pork and Beans printed in color. Extra card with advertising text and dinner suggestions from the supplier. Gilt edges. Near fine; box rubbed.

80/125

375. [Michigan] **Advance Thresher Co. Advertising Playing Cards.** SPCC, ca. 1910s. 52 + J + OB. Advertising deck for the Battle Creek, MI threshing machine company. Advertising on joker, backs, box, and AS. Some skinning and wear to box; cards moderately handled with rounded edges and soiling.

150/250

376. [Michigan] **Malta-Vita Battle Creek, Mich. Food Co. Advertising Playing Cards.** Kalamazoo: APCC, 1910s. 52 + J. Deck advertising the concentrated "ready to eat" food "perfect...for brain and muscle." Gilt edges. Advertising on backs and joker. AS with imprint of the Kalamazoo playing card company. Light wear. Very good.

150/250



370



371



372



373



374



375



376



377



383



384



385



378

377. [Milwaukee] **V. Schoenecker Boot & Shoe Co. Advertising Playing Cards.** Cincinnati: USPC, 1914. Initial 54 playing cards issued for the silver anniversary of the shoe company. 52 + J + EC + OB. Silver edges. Also retains outer shipping box with the maker's logo and address.

100/150

384. [Wisconsin] **Racine Shirts Advertising Playing Cards.** Circa 1910s. Deck advertising Racine Shirts by the Charles Alshuler Mfg. Co. of Racine, WI. 52 + J + EC + OB. Man on joker appears to hold a baseball bat; extra card with image of the company headquarters building; additional advertising on backs, AS, and box. Near fine; box with some wear.

150/250



386

378. [Milwaukee] **Espenhain Dry Goods Co. Advertising Playing Cards.** Circa 1910s. 52 + J + EC + OB. Backs with a street view of the store's corner façade. Advertising backs, box, joker, and AS. Corner crease to J-KD and EC, else very good.

100/200

385. [Musical Instruments] **Cecilian Pianos Advertising Playing Cards.** Circa 1910s. 52 + J + EC + OB. Deck advertising Cecilian Pianos by the Farrand Company of Detroit and London. Advertising on joker, AS, box, backs, and extra card. Sparkling gilt edges. Near fine; box lightly rubbed.

150/250



387

379. [Milwaukee] **Boston Store Advertising Playing Cards.** Circa 1920s. Two different decks for the Milwaukee department store. 52 + J + EC + OB; 52 + J + OB. Building façade and other advertising on boxes, jokes, Aces of Spades, and backs. Generally very good condition.

125/225

386. [Musical Instruments] **Washburn Guitars Banjos Viols Mandolins Souvenir Playing Cards.** Circa 1890s. 52 + OB. Backs depict the manufacturer's line of string instruments. In this version, advertising is added to the courts: Jacks "The Bower of Banjos"; Queens "The Queen of Mandolins"; Kings "The King of Guitars." Slight euchring; box lacks top flaps; still overall very good.

100/200



388



379

380. [Milwaukee] **Two Antique Milwaukee Advertising Decks.** Circa 1920s. Two decks, advertising Barrett's Department Store and Paris Fashion Co. Both 52 + J + EC + OB. Advertising on jokers, extra cards, AS, boxes, and backs. Condition generally very good.

125/225

387. [Ohio] **White Star Coffee Advertising Playing Cards.** Circa 1910s. 52 + J + OB. Deck advertising the White Star brand roasted by the Columbus, OH based Ohio Coffee & Spice Co. Advertising backs, box, and AS. Box with collapsed sides and lacking flaps; deck moderately worn with rounded corners and soiled surfaces.

80/125



380

381. [Pittsburgh] **W.S. Brown Athletic Goods Advertising Playing Cards.** Circa 1910s. 52. Ace of Spades gives the store's address at 523 Wood St., and advertises guns, ammunition, baseballs, and cutlery, showing a handgun at center. Gilt edges. Scattered light wear.

50/150

388. [Coffee] **C.F. Blanke Tea & Coffee Co. "Faust" Advertising Playing Cards.** St. Louis, MO, ca. 1910s. 52 + OB. Gilt edges. Advertising on all aces. Very good; skinning to one side of box.

150/250



389



381

382. [St. Louis] **Acme Cement Plaster Co. Advertising Playing Cards.** Circa 1910s. 52 + J + EC + OB. Deck advertising the St. Louis based plaster company, offering "the apex of wall plaster." Advertising on box, backs, AS, extra card, and joker. Joker slightly creased on one end; scattered wear from handling.

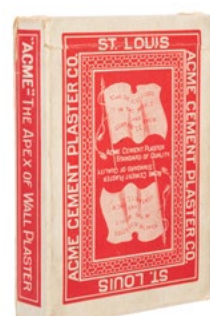
100/200

389. [Ohio-Railroadiana] **Cleveland Car Specialty Co. Pressed Steel Specialties Advertising Playing Cards.** Circa 1900s. 52 + J + EC (blank) + OB. Advertising deck for the supplier of pressed steel parts for railroad cars. Bright gilt edges. Near fine.

150/250



390



382

383. [St. Louis] **World's Fair 1904 Souvenir Playing Cards.** 52 + J + OB. Sparkling gilt edges. Oval halftone photographs of the fair on the face of each card, including buildings, performers,. Backs with the officials seal of the fair. Box a bit worn; deck near fine. Hochman SX21.

125/225

390. [Engines] **A. L. Ide & Son Springfield, Ill. Engines Advertising Playing Cards.** Circa 1900s. 52 + J + EC + OB. Advertising text and photographic illustrations of engines on backs, box, AS, EC, and "Best Bower" joker. Box lacks top flaps, else very good. Scarce.

150/250



391



398



399



400



401



392

391. [Cereal] **Egg-O-See Cereal Co.** Quincy, IL Advertising Playing Cards. Circa 1900s/10s. 52 + J + OB. Deck advertising the company's brand of toasted corn flakes breakfast cereal. Thanksgiving-related joker. Advertising on AS, box, and backs. Deck worn and soiled from handling. Good.

100/200



393

392. **Piggly Wiggly Advertising Playing Cards.** Circa 1920s. 52 + J + OB. Early advertising deck for the grocery store. Joker with "suggestions for you bridge luncheon." Advertising on box, backs, and AS. Spades and clubs are navy blue rather than black. Very good.

100/200



394

393. [Railroadiana] **Pennsylvania Tank Car Co.** Advertising Playing Cards. USPC, ca. 1900s. 52 + J + EC (dated 1906) + OB. Deck advertising the St. Louis tanker car company. Company logo on AS; advertising joker; tank car shown on backs and box. Box worn and lacking top flaps; deck showing some handling wear, graphite writing to face of 2S.

150/250



395

394. [Shoes] **"Walk-Over" Shoes Advertising Playing Cards.** Circa 1900s. 52 + J + OB. Deck advertising shoes for men and women. Lovely Arts and Crafts back design. Advertising on AS, backs, joker, and box. Near fine; some wear to box.

100/200



396

395. [Shoes] **Thomas Childs Holyoke, Mass. Footwear Advertising Playing Cards.** Circa 1910s. 52 + J + OB. Deck advertising the Holyoke shoe store. Joker printed in color with two clowns. Advertising to box and backs. Very good.

60/90

396. [Quack Medicine] **Wright's Indian Vegetable Pills Advertising Playing Cards.** New York: Excelsior Playing Card Co., ca. 1890s. 52. Backs advertise the medicine which promises to cure "all bilious complaints." Very good.

150/250



397

397. **Michelin Tire Co. Advertising Playing Cards.** Circa 1900s. 52 + OB. Card colors crisp and bright. Good; box flaps detached.

80/125

398. **Kelly-Springfield Tire Company Advertising Playing Cards.** Akron, OH, ca. 1910s. 52 + J + OB. Very good; wear to box, crease and chipped corner to five of spades.

80/125



402



403



404

399. **King Q Deluxe Matches Advertising Playing Cards.** Saginaw, MI, ca. 1910s. 52 + OB. Gilt edges. Card colors crisp and bright. Very good; light stain on box.

100/200

400. PRESSLER, Gene (American). **Westinghouse Mazda Lamps & Poker Chip Set.** Circa 1930s. 52 + J + OB. Beautiful Art Deco illustration by Gene Pressler depicting the wonders of electric light. Good; wear to box, corner missing from two of diamonds and seven of spades.

100/200

401. **Shriners Playing Cards.** St. Paul, MN: Brown & Bigelow, ca. 1930s. Cards sealed in inner wrapper. Art Deco illustration of figures on camels at dusk, posed in front of the Great Pyramid of Giza. Very good; light wear to box.

60/90

402. **DuPont Explosives Advertising Playing Cards.** Wilmington, DE, ca. 1910s. 52. Later box. Hunting-related quail design backs. Gilt edges. Includes ace of spades with image of DuPont Building. Very good.

150/250



405



406

403. **Clysmyc King of Table Waters Advertising Playing Cards.** Waukesha, WI, ca. 1880s. 52 + J + EC (advertisement) + OB. Features famous "lady and the elk" backs. Very good; tear to box, tape at one corner of five of spades.

200/300

404. **Group of Food Advertising Playing Cards.** Including: Samuel M. Duffie Co., 1930s (52 + J + OB), advertising the grapefruit supplier in Mission, Texas; B & G Olive Oil (52); Sauer's Vanilla / Duke's Home-Made Mayonnaise, 1930s (52 + 2 EC + OB). Gilt edges; R. Marston & Co., 1930s (52 + J + OB), advertising the Boston restaurant group. Deck sealed in inner wrapper.

150/250

405. [San Francisco] **Bohemian Club Playing Cards.** Circa 1910s. 52 + OB. Backs and AS with owl and spider design. Deck lightly worn from use. Good/very good.

125/225

406. **Philips Art Deco Advertising Playing Cards.** France, ca. 1925. 52 + J + OB. Deck advertising Philips light bulbs and other products. Art Deco designed courts and backs. Gilt corners. Over-print on Aces for a Philips dealer. Very good. Braun No. 513.

150/250



409

410

411

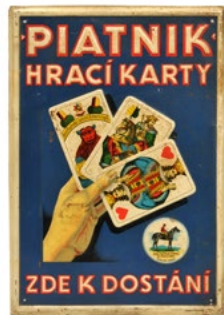
412

413

414



407



408

407. **Jeu de Grotisque [Uncut French Card Game Sheet].** [Paris], ca. 1800s. Copper-engraved sheet of 32 playing cards with occupational Janus figures, the suits inset. Framed and matted, sight 18 1/2 x 23". Light soiling, evenly browned, but colorful.

500/700

408. **Piatnik Playing Cards Tin Sign.** Circa 1900s. Embossed tin lithograph sign advertising Piatnik playing cards for the Czech market. 15 x 10". Pitted.

100/200

409. **Harrah's Reno and Lake Tahoe \$100 Casino Chip.** Third issue. R-10. Lowercase "and." Undrilled.

900/1,300

410. **Dunes Casino Las Vegas \$5 Chip.** Thirteenth issue. R-5. Brown, house mold, orange and white inserts.

80/125

411. **Boardwalk Regency Atlantic City \$25 Chip.** House mold, green with black inserts. Very good.

80/150

412. **Hotel Fremont Las Vegas \$1 Casino Chips (2).** Second issue. R-5. Arodie mold, grey with three maroon inserts.

100/20

413. **St. John's Casino (Havana) Chip Lot (5).** Including \$1, \$5, \$25, \$100, and roulette "C".

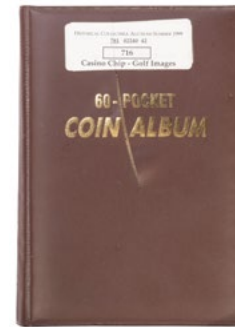
125/225

414. **Wilbur Clark's (Havana) Casino Chip Lot (4).** Including \$1, \$5, \$25, and \$100. HCE molds. Nice lot. Scarce.

200/400



416



421

415. **Casino de Capri (Cuba) Casino Chip Collection (36).** All different chips, including \$1, \$5, \$25, \$100, \$100 credit; \$5 (A-F); and (24) A-F (various colors). Nice lot.

200/300

416. **Bon-Bini Casino St. Maarten N. Antilles \$5 Chips (40).** Circa 1968-72. Vintage chips from the Caribbean casino. Top hat and cane mold. Red with three mustard inserts. Very good.

150/250

417. **Mint Club Reno Casino Chip Lot.** Including: (51) \$1 Trade Only; (33) \$5 mustard with three lavender inserts (all drilled); and (9) plastic "good for one drink".

100/200

418. **Royal Nevada Hotel (Las Vegas) \$5 Casino Chip Lot (59).** 1950s. Pink with three blue inserts. All drilled.

150/250

419. **Atlantic City Obsolete Casino Chip Collection.** Approximately 110 obsolete chips from Atlantic City casinos, including Playboy, Boardwalk Regency, Resorts International, Tropicana, Bally's Grand, Bally's Park Place, The Brighton, Hi-Ho, Hilton, Trump's Castle, Golden Nugget, Harrah's Trump Plaza, Park Place, Sands, Claridge, Showboat, Harrah's Marina, and Atlantis. Includes \$1, \$2.50, and \$5 denominations. Condition varies; undrilled.

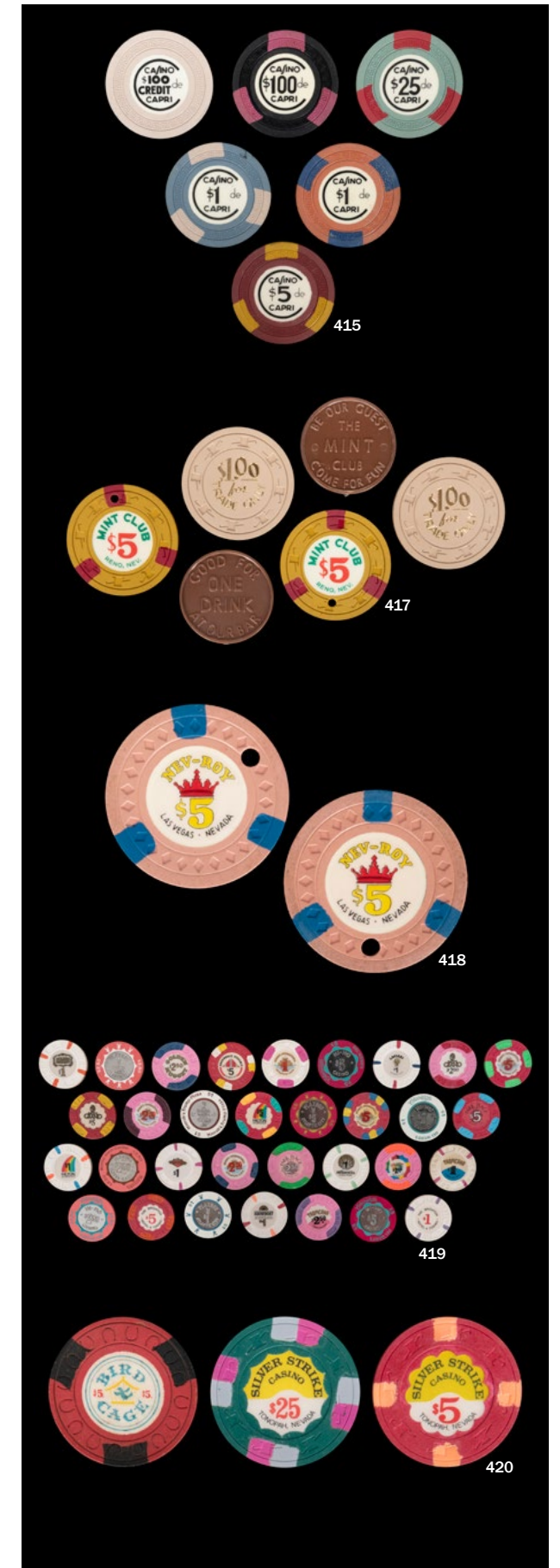
150/250

420. **Las Vegas / Nevada Obsolete Casino Chip Lot.** 22 chips, including Bird Cage \$5; Silver Strike (Tonopah) \$25; Silver Strike (Tonopah) \$5; Horseshoe Club 50 cents, \$1 and \$5; Harrah's \$1 and \$5; Silver Slipper (Vegas) \$1 and \$5; Golden Nugget \$5; Slots-A-Fun roulette chip; and others.

100/200

421. **[Golf] 23 Golf Related Poker/Casino Chips.** Includes: Arnold Palmer \$1, Dunes \$1, Caesars Tahoe Celebrity Golf Championship \$2.50, Greg Norman \$25, and many more. Neatly housed in a coin album.

100/200



415

417

418

419

420



422



423



424

422. Advertising Clay Poker Chips Lot. Including: Max Klein / Silver Age Rye (36); Drink Rose Valley/Echo Spring (39); M. Stachelberg & Co. Cigars (26); American Electric Heat (10); and 1971 Chevrolet Blue Chip Proving Grounds (47). Collection of Robert Eisenstadt.

80/150

423. Collection of Advertising and Trade Chips. Bulk American, early 20th century. Approximately 90 advertising gambling chips advertising breweries, whiskey distilleries, tobacco and cigar companies, shoe stores, department stores, and other companies. Includes clay, plastic, paper, and other compositions. Organized alphabetically by the former owner. Condition generally very good. Nice lot; additional photos on request.

125/225

424. Album of Assorted Clay Poker Chips. Approximately 180 chips, including Monarch engraved symbols; single letter monograms (many different); a handful of fraternal (non-BPOE); and scattered others. Additional photos on request. Collection of Robert Eisenstadt.

125/225



425

426

427

428

429

425. Golden Club (Reno) \$25 Crest & Seal Chip. Rare. Collection of Robert Eisenstadt.

600/900

426. Empire Club Crest & Seal Chips (29). Including (10) black; (10) green; (9) blue. Small chip to rim of one black chip.

50/150

427. Range Riders Bar & Café Crest & Seal Chips (2). Miles City, MT. Black and yellow rims.

50/150

428. Taral Celebrated American Jockey / "Tod" Sloane Crest & Seal Poker Chip. Circa 1900s. Early crest and seal chip with portraits of two different horse jockeys on either side; yellow rim. Uncommon.

80/125

429. Sphinx Crest & Seal Chips (3). Circa 1940s. Scarce chips with images of camels, pyramids, and the Great Sphinx.

80/150



435



436

430. Alcazar / Willie Green Crest & Seal Chips (5). Attributed to San Diego, CA. Name of Jack Shiver scratched out as usual. With other wear to rims. All different colors. With two other Alcazar chips with faults.

60/90

431. Owl Design Crest & Seal Chips (4). Including 000 Order of Owls (South Bend), discoloration on rim; and (3) owl on silver metallic moon.

60/90

432. Agua Caliente Crest & Seal Chips (3). Tijuana, Mexico, ca. 1929. Including (2) \$100; and (1) \$25. Serrated edges.

80/150

433. Assorted Crest & Seal Casino / Club Chips (15). Including BPOE; German Shepherd; Agua Caliente; Boys Chewing Tobacco; Stick Box; NWSC; Yellowstone Post 4; crown with feathers (off-center inlay); and others.

80/150

434. Collection of Crest & Seal Chips. Including (3) SS Tango; (8) BPOE 674 (Pocatello, ID); BPOE 1319; (2) BPOE 235; (19) Chinese lettered gambling chips; Far West Travelers Association; sailing ship; (4) Dells Club; The Christina; Gun Store (Oregon); orange and black stick box "5"; (6) "CC" with numeral 1 on verso; and DBC monogram. Nice lot.

150/250

435. BPOE (Elks) Crest & Seal Chip Collection. Over 150 chips to seven different lodges altogether, comprising: BPOE 359 (37), two colors; BPOE 600 (22), three colors; BPOE 980 (28), all red; BPOE 823 (19), all red; BPOE 1430 (20), four colors; BPOE 79 (20), two colors; and BPOE 263 (13), three colors.

200/300

436. Chez Paree Illegal Chicago Gambling Chip Lot. Chicago, ca. 1932-60. Approximately 365 clay stamped chips total from the famous nightclub in Chicago's Streeterville neighborhood. Includes red, green, orange, white, and maroon. Condition varies; generally good or very good. Scarcely seen in this quantity.

300/500

437. Lincoln Hotel (Stockton, CA) Illegal Gambling Chip Lot. Clay chips with an inlaid "TK" monogram. Three rim colors. Including (50) green; (25) cream; and (25) salmon.

125/225



430

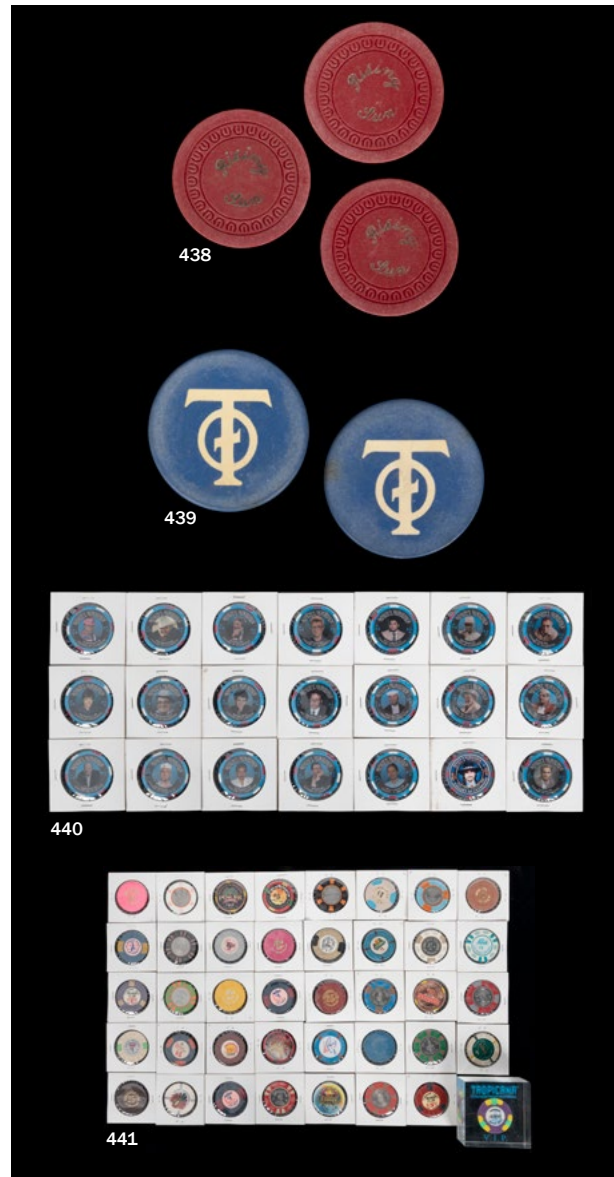
431

432

433

434

437



438. Rising Sun (Greenwood, MS) Illegal Gambling Chip Lot (78). Maroon chips with horseshoe mold, hot-stamped "Rising Sun" on both sides.

125/250

439. Blue Inlaid "TO" Gambling/Poker Chip Lot (68). Blue clay chips with white inlaid "TO". Attributed to the El Queeno Cigar Co. (Chisholm, MN), for the Theta Tau fraternity at the University of Minnesota. Collection of Robert Eisenstadt.

100/200

440. Binion's Horseshoe Gallery of Champions Set of Poker Chips. Las Vegas, NV, ca. 1990s. Full set of twenty-five \$2.50 poker chips with images of previous World Series of Poker champions.

60/90

441. Lot of Vintage Casino Chips. Circa 1960s-2000s. Forty-six poker chips in all. Casinos represented include the Desert Inn, Palace Station, the Mint, Horseshoe Club.

100/200



442



443



444

442. Oil Originals Co. Bronze Poker Chips with Wooden Box. Tulsa, OK. Six rows of 36 tokens each, for a total of 198 (99 \$5, 66 \$10, 33 \$25). Housed in a handsome wooden box with bronze casting of an oil derrick on the lid. Beautifully designed poker chips. 10 1/2 x 5 x 3".

100/200

443. Lot of Antique Clay Poker Chips with Dog Designs. 20th century. 286 chips in total. Assorted makers and values. Designs include pointer, bulldog (two different designs), terrier (one case), retriever (one case), and crest & seal with dog head (eight chips). All are clay except for terrier, which is vintage plastic.

100/200

444. Royal Poker Set / Brown Brothers Cigars, Detroit. Circa 1890s. Brown Brothers, a Detroit tobacco distributor and manufacturer, issued this set as a giveaway, perhaps as a Christmas gift to preferred customers. With four rows of German silver, brass, and copper chips in denominations of 5, 10, and 25. The lid of the box and the chips advertise "La Flor De Fontella" five-cent cigars. Lithograph label to underside of lid. With an NYCC Oriole deck (52 + Best Bower + OB), of roughly the same period but added by the consignor. Scratches and nicks to case, ink writing to inner label; overall very good. Lock, no key.

500/750



450

445. Cased Set of Antique Metal Tokens. Late 19th/early 20th century. Heavy set of brass and other metal tokens/chips in nine denominations (940 tokens in total), housed in a wooden box. Likely used as gaming counters. 11 x 7 x 2". Chipping to sliding cover.

100/200

446. Cased Set of Dragon Design Poker Chips. Approximately 325 clay poker chips with embossed dragon design, in three colors. Housed in a hardwood case with slots for two decks of cards. Case 10 x 12 x 3". Case scratched on lid, else very good.

125/225

447. Cased Oak Poker Chip Set. Eight-column caddy having a wooden handle set with mother of pearl, two slots for playing cards. With approximately 200 clay poker chips in red, white and blue with an eagle design on both sides. 10 x 5 x 5". With lock and key.

200/300

448. Peau Doux English Bulldog 1,000 Vintage Poker Chips. Five boxes each with 200 composition chips with an embossed English Bulldog, in red, white, and blue. Sold with a vintage eight-column caddy (approximately 200 chip capacity) with metal handle.

125/225

449. Swastika Design Poker Chips in Rotating Caddy. Circa 1920s. Nearly 300 clay chips with inlaid design, in cream, red, white, and yellow. Ten columns, each with a 30 chip capacity. Caddy diameter 10". Accommodates two decks of cards. Produced in the United States before World War II, these chips had no association with the Third Reich.

150/250

450. Cased Set of Fancy Monogrammed Poker Chips. Circa 1910s/20s. Aluminum caddy of approximately 230 clay chips with fancy scroll monogram of "CE" in red, white, yellow, and blue. Housed in a black paper-covered box with two deck capacity.

125/225



445



446



447



448



449



451



452



453



454



456

451. **1926 U.S. Sesquicentennial Cast Iron Poker Chip Caddy.** Top plate depicting Philadelphia's Liberty bell, stamped 1776 – 1926, which unscrews to access seven columns of clay chips in red, white and blue (approximately 98 chips included). Cast iron footed base. Diam. 4 5/8. Height 2 1/2". Nice souvenir set with unusual design.

100/200

452. **Cartamundi Casino Royale Movie Tie-In Clay Poker Chips.** Turnhout, Belgium, 2006. Produced as a tie-in with the 2006 motion picture *Casino Royale*, starring Daniel Craig as the debonair secret agent James Bond. Including: 25¢ (68), \$1 (182), \$5 (90), \$500 (97), \$1,000 (82), \$5,000 (241), \$25,000 (194), \$100,000 (116). Some chips retained in original sleeves. – Casino Royale Movie Tie-In Poker Set. 52/52 (deck complete). Very good. 12 x 8 x 2 3/4". One deck missing.

600/800

453. **Paulson Casino de Isthmus James Bond Casino Chip Lot.** 94 chips, top hat and cane mold, with the fictional Casino de Isthmus inlay from the 1989 Bond film *License to Kill*. Includes 50 cents, \$1, \$5, \$25, \$100, \$500, and \$1000. In a plastic case.

100/200

454. **Paulson Top Hat and Cane Poker Chip Collection.** Including approximately 50 airplane/aircraft (1917 Fokker, 1938 British Spitfire, 1916 Sopwith Pup, 1945 Japanese Zero, 1989 Northrop Stealth); approximately 50 U.S. presidential chips (FDR, JFK, Lincoln, Washington, Truman); approximately 25 cars (1934 Buick, 1956 T-Bird, 1934 Chrysler); approximately 35 dogs (German Shepherd, Pug, Dalmation, Black Labrador, St. Bernard); and approximately 75 Great Indian Chiefs (Sitting Bull, Chief Joseph, Geronimo, Sequoia/Cherokee, Crazy Horse, Red Cloud, Quanah Parker). Stored in three plastic cases. Near fine.

100/200

455. **Single Letter Monogram Clay Poker Chip Collection.** Every letter represented, in numerous rim colors. Many different colored rims in addition to different monograms. Also includes fancy scroll-type monograms. In 20 plastic chip cases, approximately 1,000 chips altogether. From the collection of Robert Eisenstadt.

200/400

456. **Poker Chip Caddy with Clay Chips.** Parquet twelve-column caddy filled with embossed clay composition chips including unusual denominations (e.g., 15, 55, 95). Caddy 9" diameter. With excess poker chips included in plastic cases. Over 250 chips altogether.

100/200



457



458

457. **Lot of Clay Jester Poker Chips.** Consisting of 84 poker chips: 26 beige, 19 blue, 26 red, 13 yellow. Heavy mothball-type odor.

80/150

458. **Lot of Crest & Seal Clay Poker Chips.** Circa 1920s. Together, 104 poker chips: 41 beige horse and horseshoe chips. 71 H.C. Evans & Co. Florida palms (19 yellow, 10 red, 25 burgundy, 17 blue).

100/200



459

459. **Lot of Whiskey & Cigarette Poker Sets.** Including: Southern Comfort Riverboat Gambler Set. Includes 2 decks of cards (complete and sealed), two dice, gaming chips. 10 1/2 x 8 3/4 x 3 1/4". – Two Marlboro Cigarettes Poker Sets. Includes two pairs of cards (complete), poker chips. 13 1/2 x 9 x 2". – Jack Daniel's Tennessee Whiskey Poker Set. 5 3/4 x 5 3/4 x 4". Deck of cards and some poker chips missing. – Camel Cigarettes Poker Set. – Camel's Casino Poker Set. – Jim Beam 200th Anniversary Poker Set. 5 3/4 x 5 3/4 x 4". Some poker chips missing.

50/100



460

460. **Lot of 20th Century Gambling Games.** Including: Lowe Co. Inc. Riviera. 12 1/2 x 15 1/2". Complete. – Gotham Pressed Steel Corp. Gotham Roulette. Circa 1930s. 10 1/2 x 14 1/2". Complete. – J.K. Straus Co. Royal Flush. 12 x 10 1/2". Complete. Box shows signs of scotch tape residue. – Dale Seymour's Gambling Chips Collection 500 piece puzzle. Circa 1990s. 11 1/2 x 14". Sealed. – Radio Shack Electro-Dice. Circa 1950s. 13 x 10 1/2". Complete. Working. – Put & Take. Circa 1950s. 11 x 8 3/4". Complete. – Milton Bradley Co. Card Keno. 9 x 10 1/2". Complete. – Auction Bridge Tile Set. Circa 1920s. Four metal tile racks. Complete; markings on five of spades. From the collection of Robert Eisenstadt.

100/200

461. **Plastic Laminate Carved Gaming Box.** 20th Century. Handsome gaming box with raised floral designs to all sides. Four compartments to store counters; one deck slot. Original lock, new key. 8 x 11 1/2".

80/150

462. **Lot of Dice Shakers.** Including: Atlas Dice Shaker. Height 7". – Chuck-A-Luck dice cage. Height 5". – Okima dice shaker. German. Height 5". – Dice shaker, ca. 1960s. Height 6". – Lighter dice shaker. Height 4".

200/300

463. **Five Molinard Perfume Advertising Poker Dice.** Paris, ca. 1930s. Wooden dice which screw apart at center, revealing a small container holding perfume. 3/4". Very good.

100/150



461



462



463



464



468



470



471



465



469

464. **Cawston Ostrich Farm Souvenir Dice Shaker Paperweight.** South Pasadena, CA, ca. 1900s. Glass paperweight with five tiny dice. No chips or cracks. 3 x 3 x 1".

80/150

465. **Antique Carved Rosewood Poker Case.** Italian, early 20th century. Foliate trim. Poker chips in red, white, and blue. 5 1/2 x 12 x 8". With lock and key.

200/300



466

466. **Antique Carved Poker Chip Case.** 19th century. Nicely carved with floral/foliate and scrollwork designs on all sides and lid. Containing a 12-column caddy with four deck capacity. Later clay composite poker chips in pink, green, orange, and white. 5 1/2 x 12 x 8". With lock and key.

200/300

467. **Cased Mother of Pearl Gaming Set.** 19th century. Burl wood veneer case with pastoral marquetry scene of two children and a woman with a bushel balanced upon her head. Each chip engraved with Old English "V." Fournier Heraclio deck of 40 cards included. Box 9 x 12 x 3 1/2". Chipping at lower right corner of lid; chipping to some counters. Key marked "Tomas Vingut, New York" with stars around letters. Lock working.

300/500

468. **Ornate Cast Iron 19th Century Card Press.** Impressive, fancy Victorian card press accommodating cards up to 4 1/8 x 2 3/4". Overall 4 1/2 x 4 1/2 x 3 1/2". Piece chipped from the platen, otherwise very good. Impressed with the number 1172 in fancy script on underside.

200/300

469. **Wooden Card Press.** Circa 1890s. Striking example of this device. Wood screws are fully intact. Beautiful inlay design. Pack of circa 1900s German Skat playing cards included. 6 1/2 x 9 x 4 1/2".

100/200



467

470. **Mother of Pearl Chip Set in Bakelite Caddy.** Lovely set of approximately 90 MOP chips in yellow, blue, magenta, and silver, housed in a butterscotch Bakelite caddy with knob handle. Chips 1 7/16". Caddy height approx. 3 3/4".

100/150

471. **Swirled Bakelite Poker Chip Caddy with Chips.** Circa 1940s. Handsome swirled dark red caddy with yellow handle, holding approximately 210 chips in yellow, red, and midnight green. Caddy with two playing card deck slots. 7 3/4 x 4". Chip diam. 1 3/8".

125/225

472. **Amber Bakelite Poker Chip Caddy with Chips.** Circa 1930s/40s. Dark amber Bakelite caddy with metal handle, containing approximately 200 swirled chips in butterscotch, midnight green, and red. Caddy with two deck slots. 7 x 4 x 3". Chip diam. 1 5/16".

125/225

473. **Lot of Vintage Bakelite and Plastic Caddies and Chips.** Including: (2) Turnit Mfg. Co. poker caddies. White, green plastic. Diam. 9 1/2". - Poker caddy, metal and wood, with Catalin chips. 4 x 3 3/4 x 5 1/2". - Catalin Bakelite small caddy. Diam. 4". - Collection of Catalin Bakelite chips (red, green, butterscotch). - Collection of marbled poker chips (green, brown, pink).

150/250

474. **Crisloid Octagonal Bakelite Poker Chips.** Circa 1940s. Original plastic case. 99 poker chips in total, consisting of 23 green, 22 red, and 54 beige. Case 3 x 6 1/2 x 1 3/4".

100/200

475. **Lot of Bakelite Chips.** Including: Formalith poker chips. Germany, ca. 1920s. 163 chips: 46 red, 74 white, 43 blue. Case 6 1/2 x 6 1/2". - Backgammon set. 30 chips: 15 blue, 15 red, and four dice. Case 4 x 6 1/2". - H. Baron Co., Inc. Catalin checkers. 30 chips: 15 red, 15 orange. 4 x 6 1/2". - Connolly Stamping Co. Catalin chips. 98 chips: 24 red, 25 blue, 49 beige. Case 3 1/2 x 6 1/2".

100/200

476. **American Beauty Creations Novelty Poker Chip Set.** Circa 1930s. Small celluloid case with the appearance of a compact or jewelry box, but instead containing three rows of miniature Catalin/Bakelite poker chips in red, yellow, blue, with gilt lettering. 2 1/2 x 4 x 1 1/2".

60/90



472



473



474



475



476



477



478



479



480



481



482

477. Lorillard "Splendid" and other Tobacco Chips/Tokens. Including (3) Splendid, ca. 1880s, hard rubber, in three different colors, 1 5/16"; (1) 5 Cent Ante Fine Cut, plastic; (3) Climax Plug, paper, in three colors; (1) Climax, clay, red [nicked edge]; and (1) Anona Cigar crest & seal.

100/150

478. Brass Gambling Table Match Holder/Striker. Antique desktop match holder in the form of a brass gaming table, felt top with enameled playing cards and coins. Hinged top with striker to underside; interior holds a quantity of matches. On a black marble base. 4 x 4 1/4 x 3". Slight chipping to base; brass oxidized.

50/150

479. *The Lady Gambles*. Universal International, 1949. Half-sheet (28 x 22"). Style A. Original poster for the gambling film noir starring Barbara Stanwyck. Several small holes just inside image; original folds; old masking tape to verso reinforcing edges; discoloration and wear to edges.

50/100

480. Photograph of Dice Throwing at a Canadian Cigar Store. Circa 1910s. Gelatin print photograph, with press stamp of *Daily Mirror* on verso, depicting a woman outside a storefront, throwing dice from a cup on top of a showcase filled with cigars. Penciled notes on verso. 6 1/2 x 8 1/2". Minor corner creases.

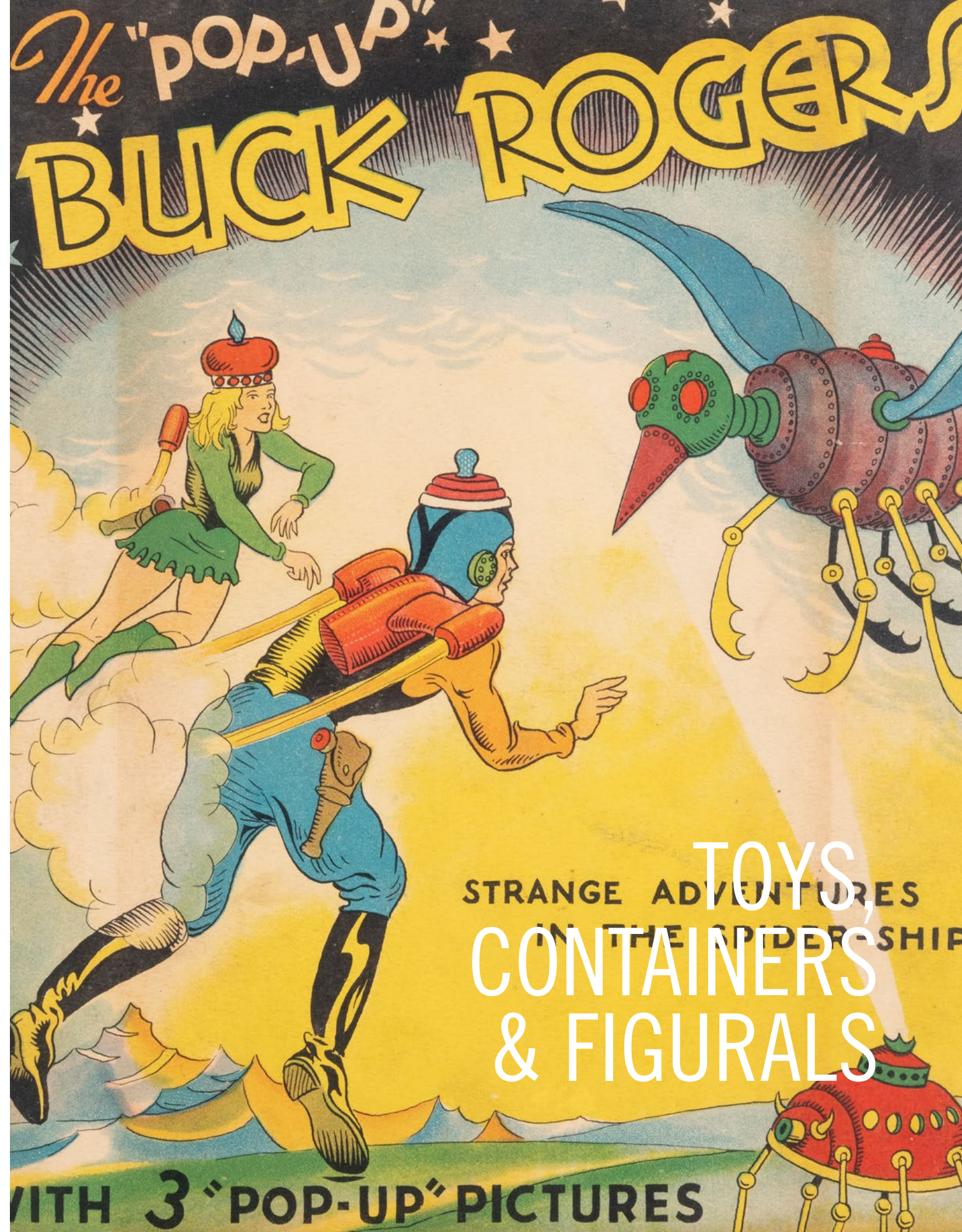
100/200

481. Group of Gambling-Themed Tins. Including: Pair-O-Dice Hair Dressing Tin. Height 2 1/4". - Clyde Collins, Inc. Laclde Lucky Talcum Powder. Height 7 1/2". - Dice Cigarettes Tin. Height 3 1/4". - Lucky Brown Pressing Oil Tin. Diam. 2 3/4". - White Ace Shoe Polish. Diam. 3" - Clyde Collins, Inc. Laclde Lucky Deodorant. Diam. 2 1/2". - Four Aces British Razor Blades box. Length 2".

60/90

482. Carnival Spinning / Gaming Wheel. Fiberboard wheel with star design. Height 40". Diam. 28". Paint colors bright. Working. Requires third party transportation.

200/400





483



484



485



486



487



488



489

483. Marx Popeye with Parrots Walker. New York, ca. 1940s. Tin lithograph wind-up toy. Height 8 ½". Toned. Working. 300/450

484. Marx Popeye The Pilot Tin Windup Toy. 1936. Tin litho with original pipe and tail fin (often missing). With key, mechanism partially working. Length 9". Some dust soiling to graphics. The earlier and more desirable version of this toy. 400/600

485. Marx Popeye Tin Litho Windup Toy. Popeye is seen carrying two parrot cages while smoking his pipe. Height 8". With key, mechanism works. Some soiling with few small scratches. 150/250

486. J. Chein Drummer Boy. New York, ca. 1930s. Tin lithograph wind-up toy. Height 8 ½". Toned. Working. 100/200

487. Ferdinand Strauss Ham & Sam Minstrel Band Toy. Lithographed windup tin toy depicts a banjoist and pianist minstrel duo. With key and internal mechanism, needs adjusting. 5 ½ x 6 ½ x 6". Some chipping and wear to the musicians, key turns, but does not turn on. 200/300

488. Four Kirchof Nursey Rhyme Book Banks. Tin lithos with various graphics. Each with metal stoppers. Height 4". Most clean with bright graphics, one with scuffing to edges. 50/100

489. Marx Merry Makers Tin Windup Toy. Four-piece band of mice. With key and original box (several losses and repairs). Length 6 ½". Bright graphics. 400/600



495



496

490. Pair of Children's Ceramic Figurine Sets. Including a set of 7 African American children. -- set of 6 porcelain monkeys playing various instruments. -- Each housed in original boxes, both made in Japan, overall very good condition. 100/150

491. Pair of Fountain Fox Toonerville Trolley Windup Toys. 1922. Tin lithos with conductors. Both with keys and working mechanisms. Length 5". One in near fine condition (few minor scuffs), the other a bit soiled and lacking chimney. 400/600

492. Pair of Windup Tin Toys. Including: T.P.S. (Japan) tin litho of a waiter on roller skates with cloth pants. With key. Working. -- Marx Special Delivery Male Jeep. With key. Mechanism partially working. -- Together, 2 toys, condition generally good to very good with bright graphics. 100/200

493. Unique Art Howdy Doody Band Tin Windup Toy. Circa 1940s. Tin litho featuring Bob Smith on piano. With key, mechanism works. Length 6 ½". Few minor scuffs. 300/400

494. Unique Art L'il Abner Band Tin Windup Toy. A four-piece band, each move when key is turned. With key, mechanism working. Length 6 ½". Bright graphics. 250/350

495. Wooden Stick Jigger. Circa 1930. A man with top hat and moustache dances with swinging arms and legs. Height 18". Clean with bright graphics. 100/200

496. Gypsy Fortune Teller Battery-Operated Toy. Japan: Ichida, ca. 1950. Witch-like fortune-teller would nod her head, move the crystal ball side to side, light up her eyes, and dispense a fortune card from her outstretched hand. Originally issued as a bank on a tin base, this example has been transplanted to a wooden base with a felt tray on which the fortune would be dispensed. With 20 plastic fortune tiles, some of which are duplicates, and some with miniature playing cards mounted to the opposite side by a former owner. 11 x 6 ½ x 11". Not working. A rare toy; sold as-is. 200/400



490



491



492



493



494



497



499



501



498



502



503



500



505

497. **Trio of Vintage Wind-Up Toys.** Including a Carl woodpecker; Carl drinking bear (West Germany label on chest); and Clown Tricycle (Korea). Largest 9 x 5 x 5". All in original boxes (German boxes worn). All working.

100/200

498. **Buck Rogers Pop-Up Book.** Chicago: Pleasure Books, 1935. Pictorial boards. Three color double-page pop-ups. Text illustrations. Small 4to (9 1/4 x 7 3/4"). Child's birthday inscription (1936) on title page; old cello-tape in gutters and repairing one tear to Buck Rogers on third pop-up. Pop-ups functioning and generally crisp and bright.

80/150

499. **2009 Chrome Hess Miniature Space Shuttle Transport.** Stamped number 0803 to underside of box. Unopened/sealed in original box. Light wear to box edges and plastic window. 6 7/8 x 2 1/4 x 3 1/2". Produced in a low quantity and rarely seen on the market.

2,000/3,000

500. **Buddy L Toy Co. Pressed Steel Wrigley's Truck.** Moline, IL, ca. 1930s. Length 23 1/2". One headlight missing. Rust on trailer affecting decals.

100/200

501. **Lot of Wind-Up and Battery-Op Toys.** Including: Daishin C.K. Toy Co. Jolly Chimp. Japan, ca. 1960s. Height 10". Discoloration. Not functioning. - Charm Co. Musical Monkey. Height 10". Discoloration. Not functioning. - Alps Bongo Monkey. Japan. Height 9 1/2". Significant wear to fur and clothing. One eye missing. Battery clasp loose. Discoloration. Not functioning. - Mechanical Drinking Bear, ca. 1960s. Height 9". One eye missing. Discoloration. Not functioning. - Cragstan Crapshooter Toy. Circa 1950s. Height 9". Dice missing. Not functioning. - Matador Wind-Up Toy. Height 10". Arms are loose. Discoloration. Working. - Rosko Josie the Cow. Japanese, ca. 1950s. Length 14". Discoloration. Not functioning. *Lot sold as-is.*

150/250

502. **The Huber Marionettes Taffy's Pick of the Litter.** Cookeville, TN, 2000. With VHS tape and DVD "The Care & Training of Your Puppy," along with instruction manual. Box 13 x 8 1/2 x 5 1/2".

100/200

503. **Battery-Operated Teddy Bear Swing.** Japan, ca. 1950s. Swinging circus bear toy, in original box. All accessories included. Box 15 x 9 x 3 1/2". Box worn, but stable. Working. With paperwork documenting repairs (replacing on/off switch) done professionally in 2009.

100/200

504. **Trio of Battery-Op and Wind-Up Clown Toys.** Including: Battery Powered Magic Man. Japan, ca. 1960s. Original, in box. All accessories included. Box 12 1/2 x 5 1/2 x 4". Wear to box. Not tested. - Happy N' Sad Magic Face Clown. Japan, ca. 1960s. Original, in box. All accessories included. Box 11 x 6 1/2 x 4". Not tested. - Mechanical Clown Tricycle. Box 5 x 4 1/2 x 3". Box worn, with one detached flap. Working.

100/200

505. **Renou Acrobat Clown Automaton on Two Chairs.** Paris: Louis Renou, ca. 1910. A clown, his hands resting between two wooden chairs, slowly raises his body up, balancing on his hands, until the figure is entirely upside down, balanced precariously between the chairs. At each stage of his ascent, the figure pauses - somewhat dramatically - in anticipation of the next step in the balancing act. As the acrobat performs, an internal music box plays. The figure features a hand-painted head, glass eyes, mohair wig, wire arms, original silk costume with sequin-studded trim. On the original wooden velvet-covered base designed for a black art-type effect, giving the appearance of a simple floorboard supported by two white wooden trestles. 15 x 8 1/2 x 18". Sold with a custom glass vitrine for display. Video on request.

4,000/6,000



504



506



512



513



514



507

506. **Lot of Singing Birds / Music Box Automata.** Including: Goldfinch Music Box. Germany, ca. 1920s. Made with real bird feathers. Brass cage. Housed in a glass dome. Height 13", diam. 8 1/2". Feathers worn from top of head. Not functioning. – Birdcage Music Box. West Germany, 1950s. Height 10", diam. 6". Birds move; music box not functioning. – Bird Perched on A Tree Stump Music Box. 9 x 8 x 5 1/2". Not functioning. – Little Drummer Boy Music Box. Arms and head move when key is wound. Height 15". One drumstick missing. Working. – Popular Progress Mr. Punch & Bear Music Box. 11 1/2 x 10 1/2 x 8". Music plays. Figures not functioning. – Early 20th Century Female Figure Music Box. Height 16 1/2". Object figure was once holding is now missing. Working. *Lot sold as-is.*

100/200



508

507. **Lot of Robotic Toys.** Including: Ideal Toy Co. Mr. Machine. Circa 1960s. Height 18". Working. – Tomy Hearoid, ca. 1980s. Height 19". Remote control included. Not tested. – Wow Wee Robosapien, ca. 2000s. Height 22". Remote control included. Not tested. – Wow Wee Cyber Spider, ca. 2000s. 5 1/2 x 8 1/2". No remote. Not tested. – Wow Wee Robo-Pet. Circa 2000s. Length 10". Remote control included. Not tested. – (4) Hasbro Bio-Bugs. Circa 2000s. Not tested. *Lot sold as-is.*

150/250



509

508. **Lot of Scale Model Vehicles.** Including vehicles by: New Millennium Toys, Roco Minitanks, Maisto, Imex, and Matchbox. 29 vehicles total, all in original packaging.

50/100



510

509. **Lot of Die Cast Metal Cars.** Including vehicles by: Hot Wheels, Auto World, Dub City, and Road Champs. 72 cars in total. Many in original packaging.

150/250

510. **Lot of Die Cast Metal Cars.** Including vehicles by: Hot Wheels, Matchbox, and Maisto. Many in original packaging. Approximately 189 cars in total.

150/250

511. **Lot of 3 Scale Model Cars.** Including (2) 1/18 Signature Models 1938 Mercedes Benz 770k Pullman; and a 1/18 Road Legends Chevrolet Bel Air Police Chief (1957). In boxes.

80/150



511

512. **Lot of AHM Blue Comet Model Trains.** Philadelphia, ca. 1960s. Ten cars total, all in original packaging. Length of each box 13".

100/200

513. **Lot of 10 Postwar Coin Banks.** Including: 1/2" artillery shell coin bank. Height 8". – Homemade artillery shell coin bank. Height 6". – Book coin bank with "The Life Insurance Savings Bank" embossed on cover. Burgundy. Height 5 3/4". Key included. – Book coin bank with "State Bank of Wisconsin" (Madison, WI) embossed on cover. Forest green. Height 4 1/2". No key. – Book coin bank with "Great Oaks from Little Acorns" embossed on cover. Burgundy. Height 3 1/2". – Barrel coin bank with "First Penny Savings Bank" (Philadelphia) printed on top. Height 3". – Can coin bank with wraparound image of American Revolution-era figures and "American Can Company" (New York) printed on top. Height 3 3/4". – Drum coin bank depicting wraparound image of a child shepherding money into coin banks. Image by beloved children's illustrator Fern Biesel Peat. Height 3". – Penny counter coin bank with image of children and their mother delightfully depositing coins into a piggy bank. Age-related wear. Height 5". Not functioning. – Penny counter coin bank with image of children and their mother delightfully depositing coins into a piggy bank. Age-related wear. Height 5". Not functioning.

100/200



515



516

514. **Four Ceramic Banks.** Including: 3 African Americana bobble heads (2 banks) and one "TP" Native American bank. Tallest 7". Condition generally very good.

100/200

515. **Amos N Andy Glass Candy Container** Jeannette, PA: Victory Glass Co., 1928. Figural glass featuring the comedians both riding in a car. Length 4 1/2". Some original paint remains.

150/250

516. **Barney Google and Spark Plug Candy Containers.** 4 total. Including: 3 Spark Plug and 1 Barney Google. Two with original metal bottoms. Some original paint remains. Tallest 4". Head broken from one Spark Plug.

100/200

517. **Billiken Figural Shakers.** Circa 1908. Includes 4 glass shakers, both variant A and B. Each 4" tall. Tops oxidized, occasional chipping to paint or glass.

150/250

518. [EASTER] **Group of 17 Easter Related Glass Candy Containers.** Including: rabbits, chicks and rabbits in cars, hens, and ducks. Several painted in gilt, many with metal bottoms. Largest height, 5". Condition generally very good.

400/600



518



519



525



527



531



520



526



528



532



521

519. Group of 10 Airplane Related Glass Candy Containers. Several containing original candy, many with metal wings and propellers. Longest 6". Condition generally very good.

200/300

520. Group of 21 Automobile Related Glass Candy Containers. Including: trains, fire engines, gas tanks, stagecoaches, and early 20th century cars. Longest 5". Occasional chipping to wheels.

200/300

521. Group of 17 Glass Figural Candy Containers. Including: Happifats, Kewpie, Mr. Peanut, Santa Claus, and several others. Many with hats or metal lids. Tallest 4". Condition generally very good.

250/350



522

522. Group of 10 Glass Lantern or Oil Lamp Candy Containers. Several containing original candy, most with metal toppers. Largest height 5". Condition general very good.

80/125

523. [Halloween] Pair of Jack O' Lantern Big Straight Eyes Candy Containers. Circa 1920s. Original metal rings with bail handles. Original paint to one (20% remaining), the other repainted. Each 4" tall.

200/300

524. Jackie Coogan Candy Container. 1925. Figural glass with original metal screw cap, variant B. Height 5". Most paint missing.

200/300

525. Lot of 20 Tin Litho Candy Container Buildings. Each 3 x 2 x 3". Several with pitting or slight oxidation, many with bright graphics.

200/300

526. Collection of Over 60 Glass Candy Containers. Consisting of: telephones, candlesticks, windmills, banks, jars, miniature mugs, pianos, hats, stoves, guns, film tripods, and many others including Pittsburgh Paints glass banks. Tallest 6". Condition generally very good.

400/600



523

524



529



533



530



534

527. Black Americana Porcelain Jazz Band Figures. Made in Occupied Japan. 6 total. Hand painted musicians. Each 5" tall. -- [Also with:] 3 Black Americana ceramic figurines including an alligator tray, a woman riding a tiger, and a figural thermometer.

100/150

528. Four Shafer & Vater Bisque Figurines. Includes Don Juan, Violinist, Mr. Tenor, and The Victor. Each approx. 8" tall.

200/300

529. Three Shafer & Vater Racist Caricature Creamer Jugs. German, ca. 1920s. Painted bisque with trademarks. Tallest 4". Condition generally fine.

100/200

530. Group of 14 Novelty Ceramic Figurals, Banks, and Holders. Including 3 skulls (candlestick holders?); 3 complimentary banks from Listerine shaving cream; an Uncle Sam container; and other novelty or advertisement figural.

200/300

531. Group of 14 Figural Matchstick Holders. Japan and Germany. Painted bisque. Painted porcelain. Several made in the style of Shafer & Vater, others stamped with the Shafer & Vater maker's mark. Tallest 6".

300/400

532. Group of 14 Figural Ashtrays. Japan and Germany. Painted bisque. Several made in the style of Shafer & Vater, others stamped with the Shafer & Vater maker's mark. Each with an open mouth for ash disposal. Tallest 5".

300/400

533. Group of Automotive Related Novelties. Including: (2) limited edition Texaco figural banks; Esso vintage celluloid bank (height 7"); ceramic Michelin Man; (4) modern metal gas pump toys.

50/100

534. Collection of 47 Miniature Automotive Related Advertising Banks. Bulk advertising for motor oil. Brands include: Mobil, Amoco, Marathon, Gulf, Skelly, Shell, and many others. Tallest 4 1/4". Occasional pitting to tops.

300/400



535



540



541



536



537



542



538



543



539



544

535. Trio of Barber Glass Paperweights. Including paperweights for: Archer Mfg. Co. Acme Barber Chair. Rochester, NY. 4 x 1 x 2 3/4". - Coates Clipper Mfg. Co. Worcester, MA. 4 x 2 1/2 x 1". - Coates Clipper Mfg. Co. Worcester, MA. 4 x 2 1/2 x 1".

150/250

536. Trio of Pittsburgh Fraternal Order Glass Paperweights. Including paperweights for: Knights Templar Triennial Conclave. Pittsburgh, ca. 1890s. Milk glass base. 4 x 1 x 2 1/2". Chip to underside of weight. - Syria Temple Atlantic City Pilgrimage. Pittsburgh, 1924. 4 x 2 1/2 x 1". - Elks Lodge (Pittsburgh). 4 x 2 3/4 x 1".

150/250

537. Pair of Food-Related Glass Paperweights. Including paperweights for: Fleers Dubble Bubble Gum. Dallas. Advertises D.J. Duncan & Sons. 4 3/4 x 2 3/4 x 1". - The Turner-Coffield Co. Waco, TX. 4 x 2 1/2 x 3/4".

100/150

538. Trio of Pittsburgh Glass Paperweights. Including paperweights for: Pittsburgh Exposition Hall, 1902. 3 1/4 x 3 1/4". - Pittsburgh 150th anniversary, 1908. 4 1/2 x 3 x 1". - Pittsburgh Public Square, north side. 3 x 3 x 1".

60/90

539. Pair of Advertising Dice Game Glass Paperweights. Including paperweights for: Peeters & Sons. San Francisco, CA. 4 1/4 x 2 3/4 x 1". - Pittsburgh Provision & Packing Co. Pittsburgh, PA. Diam. 3". Wear to central image.

100/200

540. Pair of Bicycle-Related Glass Paperweights. Including paperweights depicting: Col. Albert A. Pope (American, 1843-1909), a well-known bicycle manufacturer. New York. 4 x 2 1/2 x 1". - Two men on a bicycle. 4 x 2 1/2 x 3/4".

60/90

541. Lot of Factory Pictorial Glass Advertising Paperweights. Including paperweights for: R.N. Hutchinson & Co. Philadelphia. Depicts a factory tinted with patented hand-colored photo process. 4 1/2 x 3 x 1". - W.P. Wampler Lumber & Real Estate. Pittsburgh, PA. 4 x 2 3/4 x 1". - Simonds-Shields Lonsdale Grain Co. Kansas City, MO. 4 1/2 x 3 x 3/4". - Chicago Serum Co. Chicago, IL. 4 x 2 1/2 x 1". - Van Vleet-Mansfield Drug Co. Memphis, TN. 4 x 2 1/2 x 1". - Hanlon-Gregory Galvanizing Co. Pittsburgh, PA. 4 1/2 x 3 x 3/4". - C.F. Boehringer & Soehne. Mannheim, Germany. 4 x 2 1/2 x 1". - Eastwood Wire Mfg. Co. Belleville, NJ. 4 x 2 1/2 x 1".

150/250

542. Lot of Manufacturing Company Advertising Glass Paperweights. Including paperweights for: Keystone Lumber Co. Pittsburgh, PA. Diam. 3". - Pittsburgh Paper Box Co. Pittsburgh, PA. 4 x 2 1/2 x 1". - Alan Wood Co. Pittsburgh, PA. 4 x 2 1/2 x 1". - Stevenson Co. Self-Tightening Automatic Airtight Door. 4 x 2 1/2 x 1".

100/200



545



546



547

543. Lot of Advertising Glass Paperweights. Including paperweights for: Ramsay-Austin Cotton Co. With compass. Memphis, TN. 4 1/4 x 2 3/4 x 1". - J. Addison Hicks Law & Mercantile. Washington, D.C. 4 x 2 1/2 x 1". - Land Trust Co. Diam. 3". - James A. McNally & Sons. 4 x 2 3/4 x 1 1/2".

100/200

544. Lot of Erotic Midcentury Items. Including: Three metal bottle openers in the shape of nude women ranging in size from 6" to 4 3/4", including one marked Miss America 1933 at bottom. - Swee-Touch-Nee-Tea metal box with sex and gambling-related tokens inside. - Erotic brass finger squeeze novelty.

100/200

545. Figural Female Nude Bohemian Stand. Czech[?], ca. 1930s. Small desktop malachite glass stand, depicting a nude female form supporting a dish. Height 3". Dish diam. 2 3/4". Few tiny unobtrusive fleabites.

50/100

546. Five Figural Wall Mount Bottle Openers. Cast iron, two repainted. Largest length 4".

150/250

547. Lot of Four Dill's Best Tobacco Tins. J.D. Gill Co. Richmond, VA. Including: Dill's Best Sliced Cut Plug Smoking Tobacco Tin. Original advertising insert included. 3 3/4 x 3/4 x 2 1/2". - Dill's Best Sliced Tobacco Tin. 3 3/4 x 3/4 x 2 1/2". - Dill's Best Rubbed Cube Cut Smoking Tobacco Humidor Can. Original instructions on inner lid. Diam. 5". - Dill's Best Sliced Tobacco Tin. 7 1/2 x 1 3/4 x 4 1/2".

60/90



548



554



556



560



549



555



557



561



550

548. Lot of 30 Vintage Tobacco Tins. Circa first half of 20th century. Includes Prince Albert, Holiday Pipe Mixture, Lucky Strike, Willoughby-Taylor, and others. Condition varies.

80/125

549. Lot of Vintage Advertising Tins and Product Containers. Circa first half of 20th century. Eleven tins total. Includes Chief Metal Ware, Velvetina Face Powder, Grandma's Spanish Seasoning (unopened). - Listerine Shaving Democrat/Republican "blade banks." - Lever Bros. Co. Gold Dust Scouring Cleanser. Cambridge, MA, ca. 1930s. Unopened. Height 5". Condition varies.

60/90

550. Lot of Mini-Cast Iron Advertising Pans. Eight pans total. Pans include American Oil Company, B'Ham Stove & Range Company, Furniture Star Company. Size of longest 6".

80/125



551

551. Collection of 13 Peanut Butter Tins. Brands include: Big Sister, Long's Ox-Heart, Aunt Almira's, Monarch, Rival, Premier, Red Seal, Buffalo Brand, First National, and Wilson's. Most with lid and pale. Each approx. 3" tall. Condition generally good.

400/600



552

552. Collection of 21 Miniature Product Can Banks. Brands include: Ocean Spray, Heinz, Boscil Coffee, Gerber's, and many others. Tallest 5 1/2". Occasional pitting to tops.

150/250

553. Group of 28 Celluloid Banks, Pocket Mirrors, and Shoeshine Brushes. Bulk advertising for saving and loan banks. Largest diameter 3 1/2". Graphics bright, condition generally very good.

300/500

554. Group of 37 Celluloid Farmer Advertising Bullet Pencils. Each 3 1/2". One lacking cap, else condition generally near fine.

100/200

555. Group of Four Tobacco Countertop Displays. Includes: Joe Tinker 5 cent cigar box glass lid (slightly oxidized); tin litho Havana Fives cigar display holder; Yankee Girl Scrap box display; and a Seven Seas display pack container (full). Largest 8 x 5 x 7 1/2".

50/100



558



559

556. Group of Vintage and Modern Tobacco Advertising. Seven pieces, including framed George Walton 5 Cent Cigars; American Spirit embossed metal sign; Bugler Cigarette Tobacco embossed metal sign; Pig-Tail Crooks paper sign; Polar Bear Tobacco embossed metal sign (AAA Sign, 1991); two framed cigar labels (Red Cloud and Moro Light); Troya Fine Cigars laminated sign; and two novelty "What are You Smoking?" signs.

100/200

557. Six Ceramic Cigar Humidors, Cylinders, and Holders. Includes: a tiki hut humididor with lid, a blue transfer print humididor, two Tony Borhani Millenium Series cylinders, "The Big Chief's Cigars" holder, and a "Tabac" milk glass holder with an overglazed image of a fox hunting scene. Largest height 11 1/2". Overall, very good condition.

60/90

558. Group of 5 Advertising Tins. Including Monarch Popcorn, Fitch's powder, Sugar Candies by the United Candy Co., and a Hormel bank. Tallest 4".

50/100



562

559. Lord Calvert Embossed Tin Advertisement Sign. For a "Superb American Whiskey". Diameter 23". With original wall hanging clips on verso. Occasional wear.

50/100

560. Eight Miniature Vinegar Advertising Stone Jugs. Companies include: Jones Bros., The O. L. Gregory Vinegar Co., R. M. Hughes, Red Cross Vinegar, Blue Grass Belle Vinegar, and Aleda Vinegar. Tallest 4".

300/400

561. Group of 18 Miniature Advertising Stone Jugs. Companies include: Detrick, Quatman & Osterman, I. W. Harper, Schneible Bros., H. G. Asbury, Andy Wetzel (original printed label), Freed's, Frank R. McKelvy, and many others advertising for hotels, jugs, liquor; most complimentary of the company. Tallest 4 1/2".

400/600

562. Nine Miniature Whiskey Advertising Stone Jugs from Cincinnati. Companies include: H. F. Corbin, Freiberg & Kahn, and F. P. Gluck. Brands include: Hoffman House, Hermann's Old Whiskey, Father Marquette, Metropolitan Club, and Frank Gibson's. Tallest 4". Condition generally very good, two with cork stoppers.

400/600



563



564



565



566



567



568

563. Over 30 Miniature Ceramic Liquor Jugs. Many with original labels. Brands include: Mohawk, Gallo California Muscatel, Dolfi, Rosard, Arrow Rock & Rye, Queen's Castle, Beneagles, Alta, and Ballantino. Many with State of Wisconsin tax stamps. Each approx. 3" tall. Condition generally good.

300/400

564. Six Miniature Whiskey Advertising Stone Jugs. Companies include: Winchell & Davis, The Phil. Hollenbach Co., H. L. Sprinkle Dist. Co., Atlantic Coast Distilling Co., and Hannah & Hogg. Brands include: Old Continental, Sweet Mash Corn, Good Old OCB Whiskey, Old Fortuna, and others. Tallest, 4 1/2".

300/400

565. Thirteen Miniature Souvenir Stone Jugs. Including alcohol, destinations, and figural. Tallest 3".

100/200

566. Three Miniature Medicinal Advertising Stone Jugs. Companies include: Cambridge Spring Mineral Water, California Cough Balm, and "The Druggery" with original label advertising Laudanum with the poison symbol boldly printed. Tallest 4". Two with original stoppers.

100/200

567. Undertakers Supply Co. Embalming Fluid Bottles. Three clear glass 64 oz. bottles, embossed. Height 9 1/4". Cork and rubber stoppers.

60/90

568. Valmor Products Original Illustration Artwork and Product Labels. Chicago, ca. 1940s/50s. Artwork advertises for the "alleged" Lucky Mojo Good Luck Perfume and the Good Luck Sachet Powders. Ink and wash on heavy cardstock. Framed, overall 19 x 13 1/2". -- [Also with:] 33 original product labels catering to the needs of African American hair and skin care.

250/350

MILITARIA, ANTIQUES & MISCELLANEA





569

569. World War One Marine Corps Dress Uniform with Framed Medals and Photographs. American, ca. 1910/20s. Formerly the property of Philip D. Cavender (1899-1970). Pants, belt, jacket and hat (strap missing) included. Framed photographs of former owner's military travels, ca. 1910s. Medals include United States Marine Corps Good Conduct Medal, World War One Victory Medal, 1925 National Rifle Association Citizen Club Medal.

600/900



570

570. Pair of 19th Century Reproductions of 16th Century Italian Weaponry. Including: German shield in style of 16th century Italian splendor shield. Grael Factorei, Ilsenburg. Late 19th century reproduction. Cast iron. Roman gods and goddesses watch over a great battle taking place at shield's center, while around them larger depictions of bound and exhausted soldiers are seen. 26 1/2 x 16". - 20th century battle axe in style of 16th century Italian battle axe. Brass. Intricate designs. Length 20 1/2".

600/1,000

571. Lot of Four 20th Century American Military Helmets. Including: World War I Brodie helmet. Circa 1910s. Strap missing. - World War Two United States Navy MK-2 Talker helmet. Circa 1940s. Was designed in order for USN personnel to wear communications headgear underneath their helmets. Marked on inside with "MK-2" and "U.S.N." Strap missing. - United States Army World War II M1 helmet. Circa 1940s. Previous owner's name written on inner band. - United States Army Vietnam War M1 helmet. Circa 1970.

250/500



571

572. Tower Light Dragoon Flintlock Pistol. London, ca. 1780s. Proof-marked "GR" on lock plate beneath crown. Walnut stock. Barrel 9", overall length 15 1/2". Later ramrod. Screw missing. Pitting around barrel. Bumps, cracks, and other signs of use. Not tested. Manufactured for use aboard British East India Company vessels.

600/900



572

573. Lot of Three Double Barrel Pistols. Including: Double barrel pinfire pistol. Europe, ca. 1840s. Length 9". Pitting around barrel. Bumps, cracks, and other signs of use. - Double barrel percussion pistol. 19th century. Carved designs at edge of barrel. Length 9". - Double barrel pinfire pistol. Europe, 19th century. None tested.

250/500



573



574

574. United States Army Bayonet. Circa 1900s. Original scabbard. Marked "US" on one side of ricasso, "1903" on the other. "918" stamped onto handle. Metal handle with walnut grip. Length 17". Signs of use. Original belt loop.

100/200

575. Pair of Indo-Persian Tabar Axes. Circa 19th century. Metal. Both axe blades depict two figures sitting amidst flowers. Floral motif is continued along both axe handles. Length 26 1/2". Rust, wear.

150/250



575

577

576. Pair of A.M. Flask & Cap Co. Leather Gunpowder Flasks. Including: A.M. Flask & Cap Co. leather gunpowder bag. Circa 19th century. "6 lbs." stamped on bag. Length 9 1/2". - A.M. Flask & Cap Co. leather gunpowder bag. Circa 19th century. "8 lbs" stamped on bag. Length 8 1/2". Manufacturer's mark on barrel. Slight splitting of seams on bags towards barrels.

60/90

577. United States Army Trapdoor Trowel Bayonet. Circa 1870s. Designed for a Springfield 1873 Trap Door 45-70 Rifle. Patent date Apr. 16, 73 stamped on handle. Scabbard includes original US brass medallion, marked "Waterville Arsenal" on leather. Length 18". Blade shows signs of use.

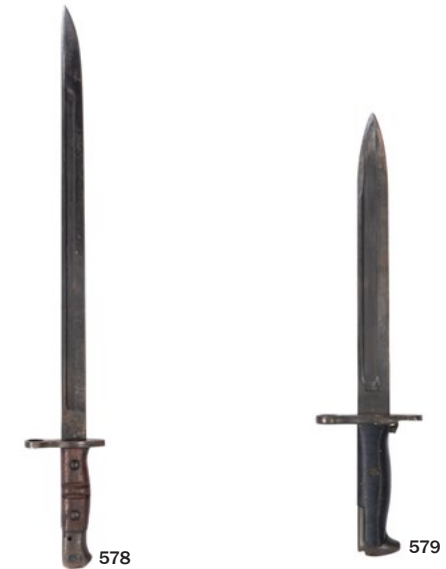
400/600

578. Remington Arms Co. World War I Bayonet. Madison, NC, ca. 1917. Double notch design on handle. Manufactured for use by American soldiers in the European theater. Length 22".

80/150

579. Rock Island Arsenal M1905 Bayonet. Rock Island Township, IL, ca. 1910s. Lock mechanism functions as designed. Length 16".

200/300



578

579

580. British Flintlock Pistol. London, ca. 1810s. Ramrod intact. Proof marks on brass barrel indicate a production year ca. 1814. "I-Rea-Sen" stamped on lock plate. Length 12". Corrosion to plate between frizzen and jaws. Not functioning.

300/500



580



581



582

583



584



585



586



588



587

589

590

592



591

594

595

581. **Lot of Antique Bayonets.** Including: Weyersberg-Kirschbaum & Co. Argentino bayonet. Germany, ca. 1890s. Metal. Length 21". Scabbard not original to bayonet. - Soviet bayonet. Circa 1940s. Metal. Length 16". Matching serial numbers on scabbard, bayonet. - Sanderson Sheffield bayonet. Circa 1890s. Marked "2.98" on ricasso. Length 20". - Wenger Swiss Army bayonet. Switzerland, ca. 1950s. Length 14 1/2". - Pattern 1907 bayonet. United Kingdom, ca. 1910s. Designed to be used with the Short Magazine Lee Enfield (SMLE) rifle. Length 22". Scabbard leather and metal pieces loose. - Two French M1874 sword bayonets. French, ca. 1870s. French inscriptions on both bayonets along spines. Length 25". Chip to blade on one bayonet. Scabbards missing. - Sword bayonet, unknown origin. Length 20 1/2". Scabbard included. - Sword bayonet, unknown origin. Length 25". - Bayonet, unknown origin. Length 16".

800/1,200

582. **Khula Khud Helmet.** Persian, ca. 19th century. Metal. Chainmail pieces. Nose guard intact. Highly decorated. Height 18".

400/800

583. **Pair of Armor Gauntlets.** Date unknown (19th century?). Articulated wrought metal. Size 14.

150/250

584. **Collection of Framed World War I-Era Medals.** Including: World War I Victory medal, ca. 1918. - Army Ordnance Association Medal, ca. 1920. - City of Philadelphia Old Guard Medal. - Veteran Corps of Artillery of the State of New York membership badge, ca. 1920s. - Commemorative Centennial Legion of Historic Military Commands Medal, ca. 1910s. - American Legion Medal, ca. 1910s. - New York State War Service Medal, ca. 1910s. - USA Army & Navy Veterans Medal, ca. 1910s. - State of New York First Provisional Regiment Medal, ca. 1910s. - Society of American Wars membership badge, ca. 1910s. From the collection of Capt. Carl C. Mattmann.

250/400

585. **World War I U.S. Navy Submarine Victory Medal.** Victory medal with a "submarine" bar. Diam. 1 3/8". Very good.

60/90

586. **W.H. Horstmann & Sons Military Presentation Sword.** Philadelphia, ca. 1850s. Blade boasts engraved designs, among them the United States motto "E Pluribus Unum" on one side, "U.S." on the other. Length 37". Original grip worn away, leaving wood handle base. Pitting, signs of use.

600/1,000

587. **Tizona Carlos V Cup Sword.** Toledo, Spain. 19th century reproduction. Length 41".

200/300

588. **Springfield Armory Model 1863 Artillery Rifle.** Springfield, MA, ca. 1860s. Two-banded barrel. Original eagle engravings on side plate. Year of manufacture (1864) stamped on plate beside hammer. "VP" stamped on barrel. Ramrod. Barrel length 32", overall length 49". Pitting, signs of use. Not tested.

500/800

Following the end of the Civil War, the Springfield Armory shifted its focus from supplying weapons to the battlefield to supplying them to the next generation of soldiers. The two-banded Springfield M1863 was assembled from surplus parts and was then sold for use in military schools across the United States.

589. **American Model 1902 Officer's Sword.** Circa 1900s. Blade boasts engraved designs. Length 35 1/2". Pitting, signs of use.

150/300

590. **Reproduction European Rondel Dagger.** 19th century reproduction of a medieval design. Length 22". Sheath not original to blade. Signs of wear and age.

100/200

591. **Three German WWII Military Items.** Including: German soldier's knife. Germany, ca. 1940s. "Meine Ehre Beibt Treue" ("My Honor Remains Faithful") inscribed on blade. Length 13". - German soldier's boot knife. Germany, ca. 1940s. Length 12". - Possible blade hilt with SS Death's Head. Germany, ca. 1940s.

100/200

592. **American Model 1860 Light Cavalry Saber.** Circa 1860s. Maker's mark "BM" on ricasso, making this a likely German import. Length 39 1/2". Pitting, signs of use.

200/300

593. **Reproduction Baker & McKinney M1860 Cavalry Sword.** 20th century. Painted designs on blade. Decorative hilt with eagle. Length 37". Scabbard intact.

150/250

594. **French Naval Officer's Percussion Pistol.** 19th century. Engraved brass fittings, following a maritime theme. Grotesque on pistol butt. Ramrod. "L. Clerc Laine" stamped onto brass plate. Length 14 1/2". Pitting, signs of use. Not tested.

300/500

595. **J.M. Cooper & Co. Navy Model Revolver.** Pittsburgh, PA, ca. 1860s. Serial no. 3582. Length 8 3/4". Repainted. Not tested.

250/400



596



597



598



599



600



601

602



603



604



605

596. **Lot of American Military Medals.** Including: World War II Victory Medal. Circa 1945. – VCA SNY Medal. Circa 1960. Issued in commemoration of 170th anniversary. – Asiatic-Pacific Campaign Medal. Circa 1945. – Centennial Legion of Historic Military Commands Medal. Circa 1876. – Combat Infantryman Pin. Circa 1940s. – Croix de Guerre Decoration. Circa 1918. Issued by French government to foreign service members. – Liberation of the Philippines Medal. Circa 1944. – Col William G. Goodwin Memorial Medal. – 2nd Company Governor's Foot Guard Medal. Circa 1950 – Liberty Bell 175th Anniversary Medal. Circa 1951. – World War I Lest We Forget Medal. Circa 1918. – World War I Veterans Reunion Medal. – Unknown Medal, framed. From the collection of Capt. Carl C. Mattmann.

100/200

597. **Lot of American Military Medals.** Including: Purple Heart Medal, unnamed, boxed. – Silver Star Medal, unnamed, boxed. – World War I Victory Medal. Circa 1918 (in frame). – Army of the Occupation of Germany Medal. Circa 1920s (in frame).

60/90

598. **American Military Pennant.** Circa 1920s. Depicts American shield with thirteen stars, thirteen stripes. Large number 12 in white against a blue background above. Length 24". Framed.

80/100

599. **Lot of U.S. Military Patches and Pins.** First half of twentieth century. Including 12 patches, including Air Force patches; and 38 pins.

100/200

600. [WWII] **Four Political Caricature Bottle Stoppers.** Depicting Winston Churchill, Harry Truman, Franklin Roosevelt, and Josef Stalin. Each approx. 3 1/2". On a wooden stand.

100/200

601. **WWII German Soldier Cuff Titles, Straps, Patches, and Helmet Stickers.** Stickers and patches are unused. A fine collection.

300/500

602. **WWII German Long Range Binoculars.** Possibly made Hensoldt Wetzlar. With original leather strap. Housed in original case. Length 9". Few tiny chips to metal.

200/300

603. KELLY, Thomas (American). **Washington's Reception at the White House, 1776.** New York, 1867. Hand-tinted lithograph. Historically impossible view of George Washington receiving guests for a reception at the White House in 1776. "Respectfully Dedicated to the People of the United States by the Publisher" printed in calligraphy at bottom. Framed, 30 x 24 1/2". Light discoloration at lower border. Fading to image. Not examined out of frame.

80/150

604. Pettibone Bros. Mfg. Co. **Civil War Certificate of Service.** 1883. Hand-colored Civil War discharge certificate detailing military service of recipient. Framed, 31 1/2 x 25". Not examined out of frame.

150/250



606



607

605. BAUGEAN, Jean-Jerome (French, ca. 1764-1819). **La Frégate des Etats-Unis d'Amérique, Le Président Venant d'Appareiller.** Circa 1810s. Hand-colored print. Depicts USS President at sea. Framed, 26 1/2 x 23". Wear to frame. Some discoloration to borders. Not examined out of frame.

200/300

606. **Engraving of Abraham Lincoln and Family.** Philadelphia: John Dainty ca. 1860s. Engraved by A.B. Walter, after a painting by F. Schell. Oval frame, 15 x 12 1/2". Cracking to paint on frame. Sold with a reproduction photograph of Abraham Lincoln ca. 1860, without beard. Framed, 21 1/2 x 17 1/2". Mold at lower matting. Prints not examined out of frames.

80/125

607. **Lot of Four Civil War Engravings.** Including: *Fifth Massachusetts Volunteers Drilling for Active Service – Charging, at the Double Quick, Up A Steep Bank Near the Capitol.* Removed from *Harper's Weekly*, ca. 1861. Framed, 21 x 16". – *Major & Knapp Soldiers Depot, Dining Room (1st Floor)* lithograph. Removed from *Manual of the Corporation of the City of New York*. Circa 1864. Framed, 11 3/4 x 14 1/2". – *Sketches by NAST, Thomas (German-American, 1840-1902). Thirteenth Massachusetts and Twelfth Indiana Regiments Crossing the Potomac/Skirmishes in General McClellan's Advance of Yorktown, Virginia.* Removed from *Harper's Weekly*. Circa 1865. Framed, 21 1/2 x 17 1/2". – *Sketches by NAST, Thomas. Fort Sumter, 1861-1865* Removed from *Harper's Weekly*, April 29, 1865. Framed, 24 x 19 1/2". Prints not examined out of frames.

100/200



608



612



613

608. **Lot of Three Framed U.S. Military Items.** Including: United States Army Citation. Circa 1919. Facsimile signature of General John J. Pershing. Framed, 11 x 16". Wear to certificate. - Reproduction Revolutionary War Recruitment Poster. 20th century. 15 x 17". - DEAN, Bob. *The Cuban Occupation*. Circa 1900s. A young soldier stares up at a beautiful lady on her balcony. 20 x 18". Prints not examined out of frames. **60/90**

609. **Pair of Nautical Oil Paintings.** Including: After MACGREGOR, Roy David (British, 1925-2003). *Cutty Sark*. 20th century. Oil on canvas. Framed, 28 1/2 x 24 1/2". - Oil painting of a ship at sea. Signed "S. Horvitz". 20th century. Framed, 20 1/2 x 24 1/2". Wear, holes to canvas. Sold as-is. **100/200**

610. **Pair of 19th Century Native American Illustrations.** Including: CATLIN, George (American, 1796-1872). Set of matted chromolithographs removed from *Illustrations of the Manners, Customs, and Condition of the North American Indians*. Circa 1841. Framed, 18 x 22". - Engraving of Chicago, 1820. Circa 1830s. Framed, 16 3/4 x 18". **100/200**

611. **Civil War Draft Notice.** Issued to Giles Van Buren of Albany, NY, July 11, 1864. Framed, 17 x 14". Document encased in archival plastic sleeve. Glass missing. **50/100**

612. **Lot of 14 Employee and Toy Badges.** Including: Circa 1930s Secret Agent X-9 badge. Length: 1 1/2". - Ladish Supervisor's Club belt buckle. Length: 3 1/4". - Two Vendo Co. security badges with photographs. Length: 2 1/2". - Two Vendo Co. security badges. Diam. 2". - Three Baltimore City "Helper Trading from Wagon" badges. 2 x 2". - OPSB Special Officer badge. 2 1/2". - City of Wauwatosa (WI) badge. Length: 2 3/4". - Chief Security of Shawmut Bank (Boston) badge. Length: 2 1/2". - Royal Farms security badge. 2 1/2 x 2 1/2". - Thomsen-Abbott Construction Co. badge. Length 2". **100/200**

613. **Howe Scale Co. 10 lb. Scale.** Vergennes, VT, ca. 1860s. Cast iron. Patent date June 18, 1867 at center. 8 x 19 x 6 1/2". Working. **60/90**



609



610



611



614

615



616



617



618

614. **Pennsylvania White Porcelain #4 Candy Scale.** Bareville, PA: National Store Specialty. Height 14 1/2". Light browning from oxidation at joints. **100/200**

615. **Lot of Three Kitchen and Candy Scales.** Brass, porcelain, and cast-iron scales by Pelouze, F.J. Thornton "The Viking," and Hanson. Largest 9 x 12 x 10 1/2". Pelouze scale with a weight to price converter. **60/90**

616. **Two Early Brass Weight Sets.** Both sets in fitted wood cases. Sets include 23 weights and 9 weights. Heaviest weight, 1lb. **100/150**

617. **Pair of Voltage Measuring Instruments.** Includes a new old stock Weston milliamperes DC meter (1901) and a 1950s resistance instrument. Average length 6". **40/60**



619



621

618. **Gundlach Mfg. Co. Korona Box Camera.** Rochester, NY. Height 10". Lens slightly loose. **80/125**

619. **Time Clock Sales & Service Co. Vintage Time Recorder Clock.** Los Angeles. Oak cabinet. 31 x 12 x 12". Crack in glass at upper left corner. Cabinet door unlocked. No keys. Not functioning. **150/300**

620. **Voice from the Sky Speaker.** Chicago: Florentine Art Productions, Inc., ca. 1920s. Height 24". Wires missing. **1,000/2,000**

621. **Cast Metal Spelter Figure of Man on Horse with Ax.** Height 9 1/2". Shield slightly bent. **60/90**

622. **Art Marwal Ind. Inc. Chalkware Penguin.** Miami, ca. 1960s. Height 19". **100/200**



620



622



623



626



627



629



624



625



628

623. Trio of Thermometers and Rain Gauge Recorders. Including: Circa 1930s wood composite desk thermometer with Masonic square and compass symbol. Height 5". - Circa 1970s John Deere rain gauge recorder. Height 6 1/2". - Westside State Savings Bank (IA) thermometer and rain gauge recorder. Height 6 1/2".

80/125

624. Pair of Vintage Appliances. Including: Circa 1940s Victor Electric Products Inc. Victron space heater. Height 11". Working. - Vintage Sears Roebuck Co. electric fan with metal blades. Height 13". Working.

100/200

625. United Electrical Mfg. Co. Eskimo Model 20 Fan. Adrian, MI, ca. 1950s. Height 12". Working.

100/200

626. F.B. Rogers Silver Co. Silver Plated Serving Tray. Shelburne Falls, MA. Wear to underside. Length 26".

50/100

627. Lot of Items Personally Owned by Chicago Mobster Jimmy "The Monk" Allegretti. Including: One pair of silver cufflinks with previous owner's name inscribed upon them. 1 x 1 1/4" each. - 10k gold ring with dice design. Faux diamonds. - Ronson lighter with "To Jimmy from Flo" inscribed on one side, initials "JA" inscribed on the other. Original case included. Case 4 x 3 1/2". Lighter 1 3/4 x 2 1/4".

500/700

Jimmy "The Monk" Allegretti was known for being one of the Chicago Outfit's highest earners under mob boss Ross Prio.

628. Thomas A. Edison Co. Amberola 30 Wax Cylinder Phonograph. Orange, NJ, ca. 1910s. Oak case with hinged lid. Contemporary machinery. Wax cylinder included. 12 1/2 x 11 1/2 x 15 1/2". Wear to body. Lightly chipped wood on left side. Working.

200/300

629. Akron Spirit Level. Akron, pat. 1887. Antique wood and brass, bubbles working. Length 29".

40/80

RAIL

RAIL ROAD CROSSING

TRACKS CROSSING ROAD

634



630



631



633



632



635

630. Automatic Pencil Sharpener. New York, pat. 1906. Sheet metal and cast iron mounted on wooden base. With original label. Height 6". Working.

100/200

631. Industrial Butter Molding Tool by Standard. 1900s. Metal and wooden plunger tool used to mold a one-pound brick of butter, leaving hash marks at one end for the brick to be further divided into regular sticks. Stamped by maker with patent date on center rod. Height 22".

50/100

632. Antique Railroad Semaphore Signal. Cast iron. 54 x 32". Stamped July 21, 1903 patent date. Requires third party transportation.

200/300

633. Antique Four Light Railroad Signal. 24 x 9 x 5". Original wires partially exposed. Rust and wear. Not functioning.

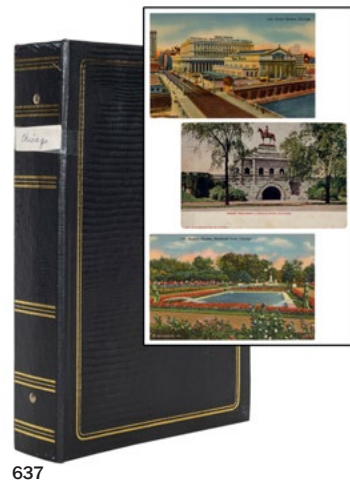
150/300

634. Lot of Railroad Crossing Signs. Including: Steel with porcelain enamel railroad crossing crossbuck sign. Glass cateye reflectors. Three pieces, disassembled. "Rail" and "road" signs 9 x 19 1/2". "Crossing" sign 9 x 48". Scattered light scratches. Rust spots. Wear to enamel on "Crossing" sign above "O". - Steel with porcelain enamel "Tracks" sign. Glass cateye reflectors. 8 x 27 1/4". Rust wear evident around reflectors. - Steel railroad crossing crossbuck sign. Two pieces, disassembled. 9 x 48". Rust. Some bending to steel along edges. All pieces exhibit wear from outdoor exposure.

300/500

635. Folk Art Carved Pine Keepsake Box. Great Depression-era folk art hinged box with carved date of 1934 to lid. Exquisitely carved image of a swan at top of box. Diamond border motif. 5 x 6 1/2 x 12".

100/200



637



638



636



639

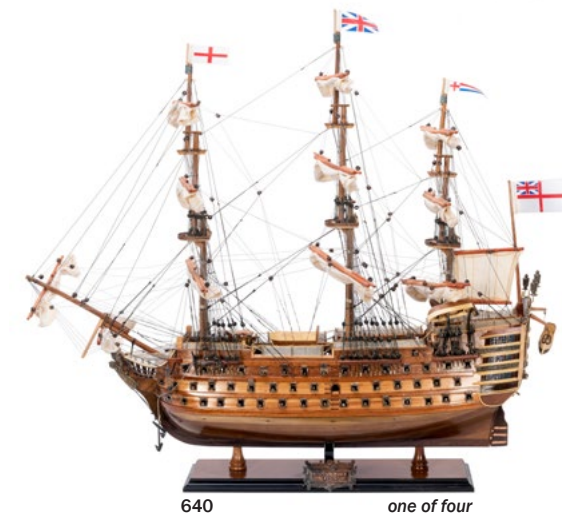
636. [AUTOMOBILIA] **Ford Times. File of Magazines.** Ford Motor Company, late 1940s-50s. Over 70 issues of the monthly magazine published by the automaker. Digest (6 3/4 x 5"). Original glossy wrappers. These copies marked compliments of Cooper-Pollock (Elmhurst, IL). Condition generally very good. **40/80**

637. **A Chicago Postcard Collection.** Approximately 190 postcards, majority pre-1920, including hotels, parks, streets, bridges, stockyards, theaters, libraries, Lake Michigan, fairs, and others. **100/200**

638. **Figural Tabletop Airplane Fan.** A large, custom-made tabletop fan designed after a 1930s airplane. Steel. Length 27". Working. **1,000/1,200**

639. **Cutty Sark Clipper Model Ship.** Scale model of British clipper ship, in service from 1869-1895. Individual deck planks. Ship's name on metal plate affixed to stern. 23 x 34 x 14". Requires third party transportation. **400/600**

640. **Four Large Wooden Model Ships with Display Cases.** Including: (2) Nelson's HMS Victory wooden ships (Each, 28 x 5 x 26"); total build time 184 hours each. -- a cross section of the HMS Victory (Height 34"). -- and the RMS Titanic (Length 31"). -- Each with original display case (two not shown), two models still in original wooden braces for shipping, all original packaging included, condition generally fine. COA's included. Third party shipping required. **400/600**



640

one of four



641



642

641. **Group of 16 Ladies Bonnets.** 19th century. Cloth, silk, and velvet fabrics used. [Also with:] several metal and turned wood hat stands. A fine collection. **400/600**

642. **Three Ladies Silk Calashes.** Late 18th century/early 19th century. Including: a dull brown silk calash with silk back bow, net lining, 7 accordion cane ribs (some staining, chin ties damaged). -- China silk calash with taupe silk gros-grain ribbons (few tiny brown spots). -- and one other. Overall very good condition. **250/350**

643. **Pair of Mid-Century Floor Lamps.** Circa 1960s. A futuristic design in white enamel and gilt metal, glass bulb cover with gilt hourglass design, metal shades. Height 33". Slight corrosion to iron base, shades dust soiled with some dents; not tested. **150/250**

644. **Mid-Century Modern Boomerang Table.** Wood-look Formica top with tiled border. Width 54". Legs need to be replaced and reset. Requires third party transportation. **200/300**

645. **Blackhawk Mfg. Co. O.D. Wrench Set.** Milwaukee, WI, ca. 1940s. All pieces included, original. 9 1/2 x 23 x 11 1/2". **80/125**

646. **Pair of Ostrich Eggs.** Including one carved and signed by Joe Chiwaka; the other lithographed with an antique map. Both with stands. Height of eggs, 6". **60/90**

647. **Pair of Seabird Full Body Taxidermy Mounts.** Both mounted on a lava rock. Height 11 1/2". **100/200**



643



644



645



646



647

CONDITIONS OF SALE

The lots listed in this catalogue (whether printed or posted online) will be offered at public auction by Potter and Potter Auctions, Inc., as agent for consignor(s) subject to the following terms and conditions. By bidding at auction you agree to be bound by these Conditions of Sale.

PRIOR TO THE SALE

Please examine lots. Prospective buyers are strongly advised to “in person” or by personally retained Agent, examine any property in which they are interested before the auction takes place. Condition reports may be provided if requested in a timely manner.

Condition of lots, Warranties and Representations - All lots are sold “AS IS” and without recourse, and neither Potter and Potter Auctions, Inc. nor its consignor(s) makes any warranties or representations, express or implied with respect to such lots. Neither Potter and Potter Auctions, Inc. nor its consignor(s) makes any express or implied warranty or representation of any kind or nature with respect to merchantability, fitness for purpose, correctness of the catalogue or other description of the physical condition, size, quality, rarity, importance, medium, material, genuineness, attribution, provenance, period, source, origin, completeness, historical significance of any lot sold. The absence of any reference to the condition of a lot does not imply that the lot is in perfect condition or completely free from wear and tear, imperfections or the effects of aging. No statement, whether written or oral, and whether made in the catalogue, or in supplements to the catalogue, an advertisement, a bill of sale, a posting or announcement, the remarks of an auctioneer, or otherwise, shall be deemed to create any warranty, representation or assumption of liability. Potter and Potter Auctions, Inc. and its consignor(s) make no warranty or representation, express or implied, that the purchaser will acquire any copyright or reproduction rights to any lot sold.

AT THE SALE

Registration Before Bidding – A prospective buyer must complete and sign a registration form and provide identification before bidding. We may require bank or other financial references. Potter and Potter Auctions, Inc., is under no obligation to approve the registration of any prospective registrant.

Bidding as Principal – When making a bid, a bidder is accepting personal liability to pay the purchase price, including the buyer’s premium, all applicable taxes and all other applicable charges, unless it has been explicitly agreed upon in writing with Potter and Potter Auctions, Inc. before the commencement of the sale that the bidder is acting as agent on behalf of an identified third party acceptable to Potter and Potter Auctions, Inc., and that Potter and Potter Auctions, Inc. will only look to the principal for payment.

Absentee Bids – Potter and Potter Auctions, Inc. will use reasonable efforts to carry out written bids given to us prior to the sale for the convenience of clients who are not present at the auction in person. Bids must be placed in U.S. dollars. If we receive written bids on a particular lot for identical amounts, and these are the highest bids on the lot at the auction, it will be sold to the person whose written bid was received and accepted first. Execution of written bids is a free service undertaken subject to other commitments at the time of the sale and Potter and Potter Auctions, Inc. does not not accept liability for failing to execute a written bid or for errors and omissions in connection with such written bid(s).

Telephone Bids – If a prospective buyer makes arrangements with us prior to the commencement of the sale we will use reasonable efforts to contact said prospective buyer to enable them to participate in the bidding by telephone and we do not accept liability for failure to do so or for errors and omissions in connection with telephone bidding.

Bidding Increments - **Expected bid increments are as follows:**

Min Value	Max Value	Increment
\$0.00	\$29.00	\$5.00
\$30.00	\$99.00	\$10.00
\$100.00	\$499.00	\$25.00
\$500.00	\$999.00	\$50.00
\$1000.00	\$1,999.00	\$100.00
\$2,000.00	\$4,999.00	\$200.00
\$5,000.00	\$9,999.00	\$500.00
\$10,000.00	\$19,999.00	\$1,000.00
\$20,000.00	\$49,999.00	\$2,000.00
\$50,000.00	and above	10% of current bid

Note: the auctioneer may modify the increments at any time.

Reserves – Although the majority of the lots in the sale are offered without reserve, some lots in the sale may be subject to a reserve which is the confidential minimum price below which such lot will not be sold. The reserve will not exceed the low estimate of the lot. Reserves are agreed upon with consignors or, in the absence thereof, the absolute discretion of Potter and Potter Auctions, Inc. The auctioneer may open the bidding on any lot below the reserve by placing a bid on behalf of the seller. The auctioneer may continue to bid on behalf of the seller up to the amount of the reserve, either by placing consecutive bids or by placing bids in response to other bidders. With respect to lots that are offered without reserve, unless there are already competing bids, the auctioneer, in his or her discretion, will generally open the bidding at half of the low estimate for the lot. In the absence of a bid at that level, the auctioneer may proceed backwards at his or her discretion until a bid is recognized, and then continue up from that amount.

Auctioneer’s Discretion – The auctioneer has the right at his or her absolute and sole discretion to refuse any bid, to advance the bidding in such a manner as he or she may decide, to withdraw any lot, and in the case of error or dispute, and whether during or after the sale, to determine the successful bidder, to continue the bidding, to cancel the sale or to reoffer and resell the item in dispute. If any dispute arises after the sale, our sale record is conclusive.

Successful Bid – The highest bidder acknowledged by the auctioneer will be the purchaser. In the case of a tie bid, the winning bidder will determined by the auctioneer at his or her sole discretion. In the event of a dispute between bidders, the auctioneer has final discretion to determine the successful bidder or to reoffer the lot in dispute. If any dispute arises after the sale, the Potter and Potter Auctions, Inc. sale record shall be conclusive. Title passes upon the fall of the auctioneer’s hammer to the highest acknowledged bidder subject to the Conditions of Sale set forth herein, and the bidder assumes full risk and responsibility.

AFTER THE SALE

Buyer’s Premium – In addition to the hammer price, the buyer agrees to pay Potter and Potter Auctions, Inc. a buyer’s premium of 20%, and the applicable sales tax added to the final total.

Payment – The buyer must pay the entire amount due (including the hammer price, buyer’s premium, all applicable taxes and other charges) no later than 5 p.m. on the seventh (7) business day following the sale. Payment in U.S. dollars may be made with cash; bank check or cashier’s check drawn on a U.S. bank; money order; or wire transfer unless other arrangements are made with Potter and Potter Auctions, Inc. Potter aAuctions, Inc. reserves the right to hold merchandise purchased by personal check until the check has cleared the bank. The purchaser agrees to pay Potter and Potter Auctions, Inc. a handling charge of \$50 for any check dishonored by the drawee. In the event buyer desires to pay by using a credit card, a convenience fee equaling 2.5% of the entire amount due shall be added to the buyer’s invoice.

Shipping Terms - By Potter & Potter. Choice of packing and shipping method is strictly at the discretion of Potter and Potter Auctions. P&P generally provides in house shipping via FedEx or USPS to winning bidders. Please allow 3–4 weeks for delivery.

Customer’s obligation to inspect and report claims. Potter and Potter professionally and safely packs and ships thousands of items every year, and insurance is provided for successful purchasers. In the unlikely event that damage or loss occurs, these are subject to our insurance carrier’s rules and limitations. Customers are required to report, in writing, any damage or loss within 72 hours of receipt of merchandise. The carrier’s delivery record shall be conclusive as to this matter.

Correcting Shipping Address and report of non-receipt: Prior to shipping winning lots, customers must provide Potter and Potter with a current and accurate shipping address. Once an order has been shipped, any address changes or updates are subject to a \$25.00 return to Sender fee, in addition to shipping charges.

In the event an item is lost during transit, it is customer’s obligation to report non-receipt within 7 days of the date on which the item(s) were shipped.

Third-party shipping. Certain large, high-value, and fragile items will require the services of a professional packing and transportation company, or pick-up directly from our gallery. We suggest that you contact our Shipping Department before the sale for advice on the shipping and handling requirements that apply to the lots of interest to you.

If third-party shipping is chosen by the buyer or required by Potter & Potter, the buyer will arrange for removal of the merchandise from P&P within 15 days following the sale and must communicate and coordinate removal arrangements with P&P during regular business hours (Monday – Friday, 9am – 5pm).

Arrangements for third-party transportation are the responsibility of the buyer. We will not be responsible for the acts or omissions of carriers and packers whether recommended or not by us. Property will not be released to the shipper without the buyer’s written consent and until payment has been made in full. Unless otherwise agreed, all purchases should be removed by the 15th day following the sale.

Risk of loss or damage in shipment. Any risk of loss or damage to the shipment through a third party carrier, once the item is removed from Potter and Potter, is at the risk of the buyer, and Potter & Potter is not liable for loss or damage of these items.

Ship to address. The winning bidder is responsible for providing Potter & Potter with an accurate address for the order destination as well as specific instructions for delivery.

Shipping costs. Shipping costs include charges for labor, materials, insurance, as well as actual shipper’s fees. Buyer agrees to reimburse Potter & Potter the difference if actual shipper’s fees exceed the invoice amount.

Storage fees. Potter & Potter will charge a storage fee of \$50 per week for any orders awaiting payment and/or removal for more than 15 days following the auction date. This cost shall constitute a lien against such property, which may be removed to a public warehouse at the risk, account, and expense of the purchaser.

International shipping. Potter and Potter ships internationally. All shipments will include an itemized invoice with the actual and correct purchase totals including the buyer’s premium and shipping cost. International buyers are responsible for knowing their country’s laws on importing items as well as paying all customs and duties fees on purchased items.

Non-Payment – If we do not receive payment in full, in good cleared funds, within seven (7) business days following the sale, we are entitled in our absolute discretion to exercise one or more of the following measures, in addition to any additional actions available to us by law: (1) to impose a late charge of one and a half percent (1.5%) per thirty (30) days of the total purchase price, prorated to commence on the date of the sale; (2) to hold the defaulting buyer liable for the total amount due and to begin legal proceedings for its recovery together with interest, legal fees and costs to the fullest extent permitted under applicable law; (3) to rescind the sale; (4) to resell the property publicly or privately with such terms as we find appropriate; (5) to resell the property at public auction without reserve, and with the purchaser liable for any deficiency, cost, including handling charges, the expenses of both sales, our commission on both sales at our regular rate, all other charges due hereunder and incidental damages. In addition, a defaulting purchaser will be deemed to have granted us a security interest in, and we may retain as collateral security for such purchaser’s obligations to us, any property in our possession owned by such purchaser. At our option, payment will not be deemed to have been made in full until we have collected funds represented by checks, or in the case of bank or cashier’s checks, we have confirmed their authenticity; (6) to offset against any amount owed; (7) to not allow any bids at any upcoming auction by or on behalf of the buyer; (8)to take other action as we find necessary or appropriate.

LIABILITY

Condition Reports – Potter and Potter Auctions, Inc. is not responsible for the correctness of any statement of any kind concerning any lot, whether written or oral, nor for any other errors or omissions in description or for any faults or defects in any lot. Neither the seller, ourselves, our officers, employees or agents, give any representation, warranty or guarantee or assume any liability of any kind in respect of any lot with regard to merchantability, fitness for a particular purpose, description, size, quality, completeness, condition, attribution, authenticity, rarity, importance, medium, provenance, prior ownership history, or historical relevance. Except as required by local law any warranty of any kind whatsoever is excluded by this paragraph.

Purchased Lots – If for any reason a purchased lot cannot be delivered in the same condition as at the time of sale, or should any purchased lot be stolen, mis-delivered or lost prior to delivery, Potter and Potter Auctions, Inc. shall not be liable for any amount in excess of that paid by the purchaser.

Legal Ramifications – The rights and obligations of the parties with respect to these Conditions of Sale, the conduct of the auction and any matters connected with any of the foregoing shall be governed and interpreted by the laws of the jurisdiction in Illinois. If any part of these Conditions of Sale is found by any court to be invalid, illegal or unenforceable, that part shall be discounted and the rest of the conditions shall continue to be valid to the fullest extent permitted by law.

Discretion - Any and all of the conditions may be waived or modified in the sole discretion of Potter and Potter Auctions, Inc.

Potter and Potter offers historically significant items which may include culturally insensitive material, including but not limited to racist and sexist content. The content and form of such items does not reflect the views or values of the auctioneers or staff.

Potter & Potter Auctions, Inc.
(Illinois Lic. # 444.000388)
5001 W. Belmont Ave.
Chicago, IL 60641

Phone: (773) 472-1442
Fax: (773) 260-1462
www.potterauctions.com
info@potterauctions.com

Gabe Fajuri, Managing Auctioneer
Lic. #441.002150

Text: Christopher Brink, Joshua McCracken, Joseph Slabaugh
Layout: Stina Henslee
Photography: Shelby Ragsdale & Liz Vitlin

Note: Many supplemental and detailed images of auction lots ~ not shown in the pages of this catalog ~ are available online at Liveauctioneers.com, or directly from Potter & Potter.

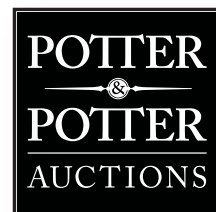
Potter & Potter wishes to thank Phil Schwartz, Mark Thomas, Paul Hindin, Larry Lubliner, Arlene Larsen, Phil Bollhagen, Christine Cronin, George Glastris, Christopher Jandacek, Mick Lartigaut, Robert Lartigaut, Susan Fink, Tom Miano, John Rogers, Matthew Laubenstein-Smith, Eugene Brown, Terry Fadina, Barry Slotnick, David Hirsch, Ron Pulver, Rodney Simale, Dan Davids, Craig Stratton, Fernando Norona, Dan Auger, Eric Jungnickel, Pat Heatley, James Soffer, David Brown, David Freilich, John Carini, Helene Romer, Richard Skibiell, William Taylor, David Woody, Alex Theis, Richard Mossmayer, Mike Hasanov, Jeanette Joerg, and the family of Robert Eisenstadt for their assistance in the preparation of this catalog.

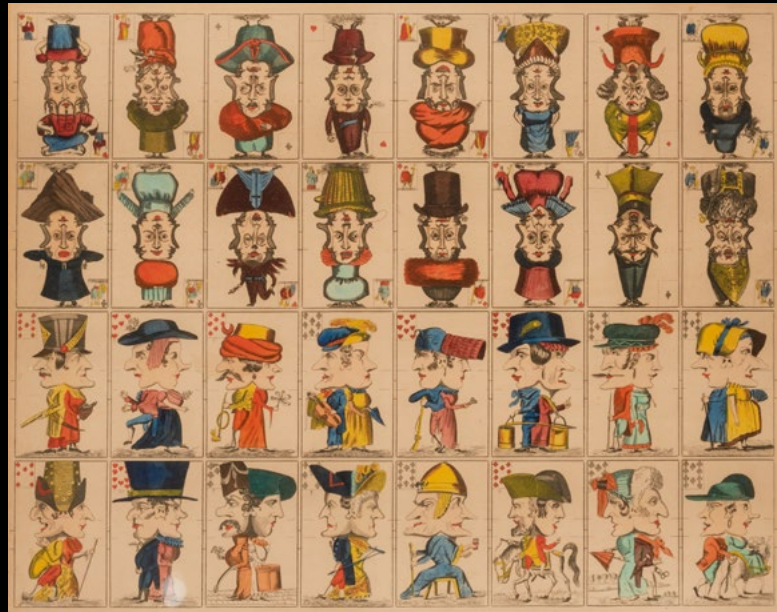
Contents copyright © 2021 by Potter & Potter Auctions, Inc.

All rights reserved. No part of this publication may be reproduced or transmitted in any form or by any means, electronic or mechanical, including photocopy, recording or any information storage and retrieval system now known or to be invented, without permission in writing from the copyright holders.

SUMMER MAGIC

JUNE 19, 2021





POTTER & POTTER AUCTIONS, INC.
WWW.POTTERAUCTIONS.COM